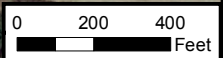




This information is for environmental review purposes only.



Atlantic Coast Pipeline

- Atlantic Coast Pipeline
- Access Road
- Workspace**
- Permanent
- Temporary
- Additional Temporary Workspace
- Aboveground Facility
- Milepost
- Wetland
- Waterbody

Atlantic Coast Pipeline
Appendix 2
 Aerial Route Maps
 City of Suffolk, Virginia





This information is for environmental review purposes only.

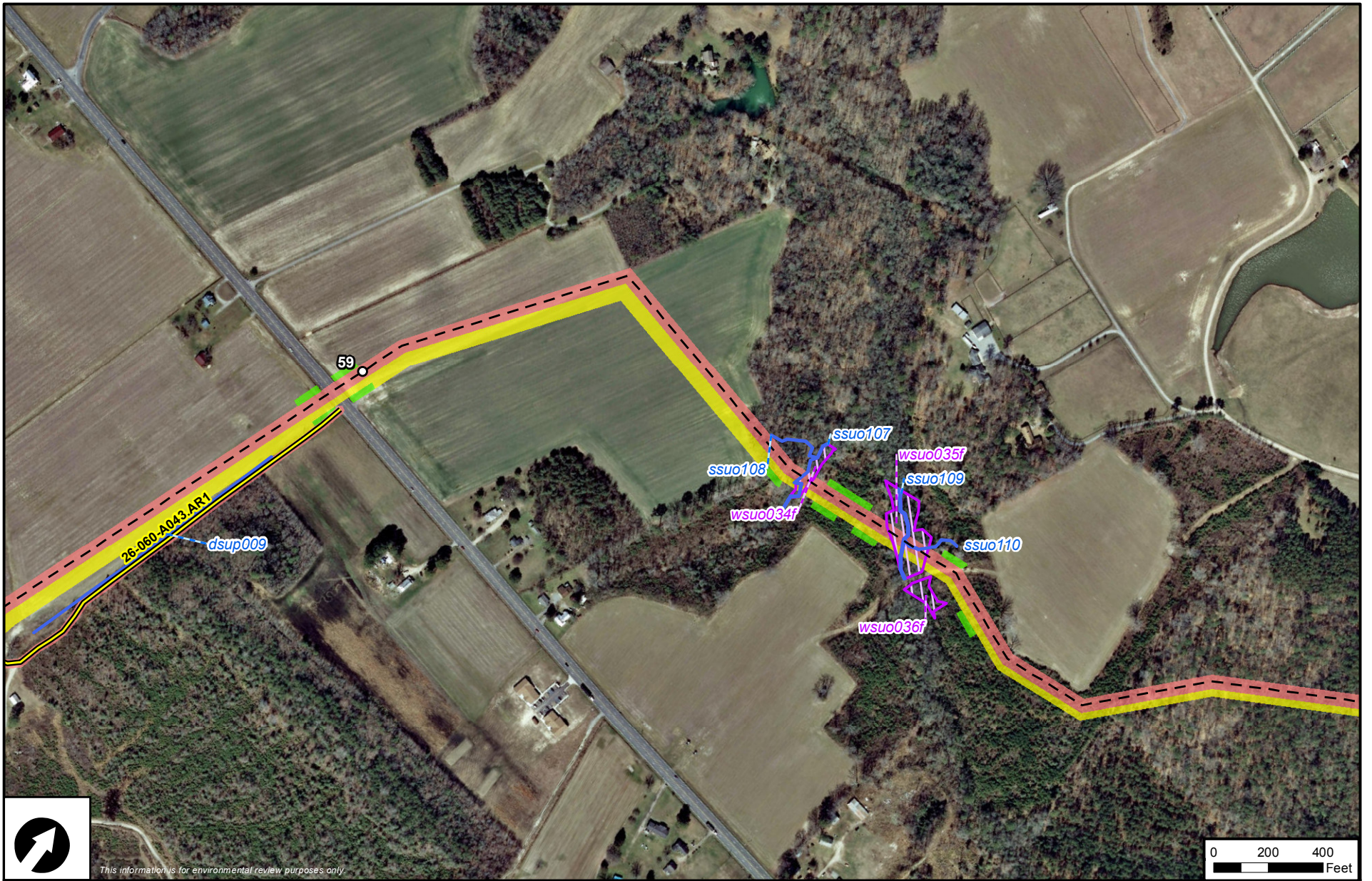


Atlantic Coast Pipeline

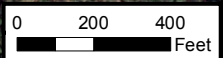
- Atlantic Coast Pipeline
- Access Road
- Workspace**
- Permanent
- Temporary
- Additional Temporary Workspace
- Aboveground Facility
- Milepost
- Wetland
- Waterbody

Atlantic Coast Pipeline
Appendix 2
 Aerial Route Maps
 City of Suffolk, Virginia





This information is for environmental review purposes only.

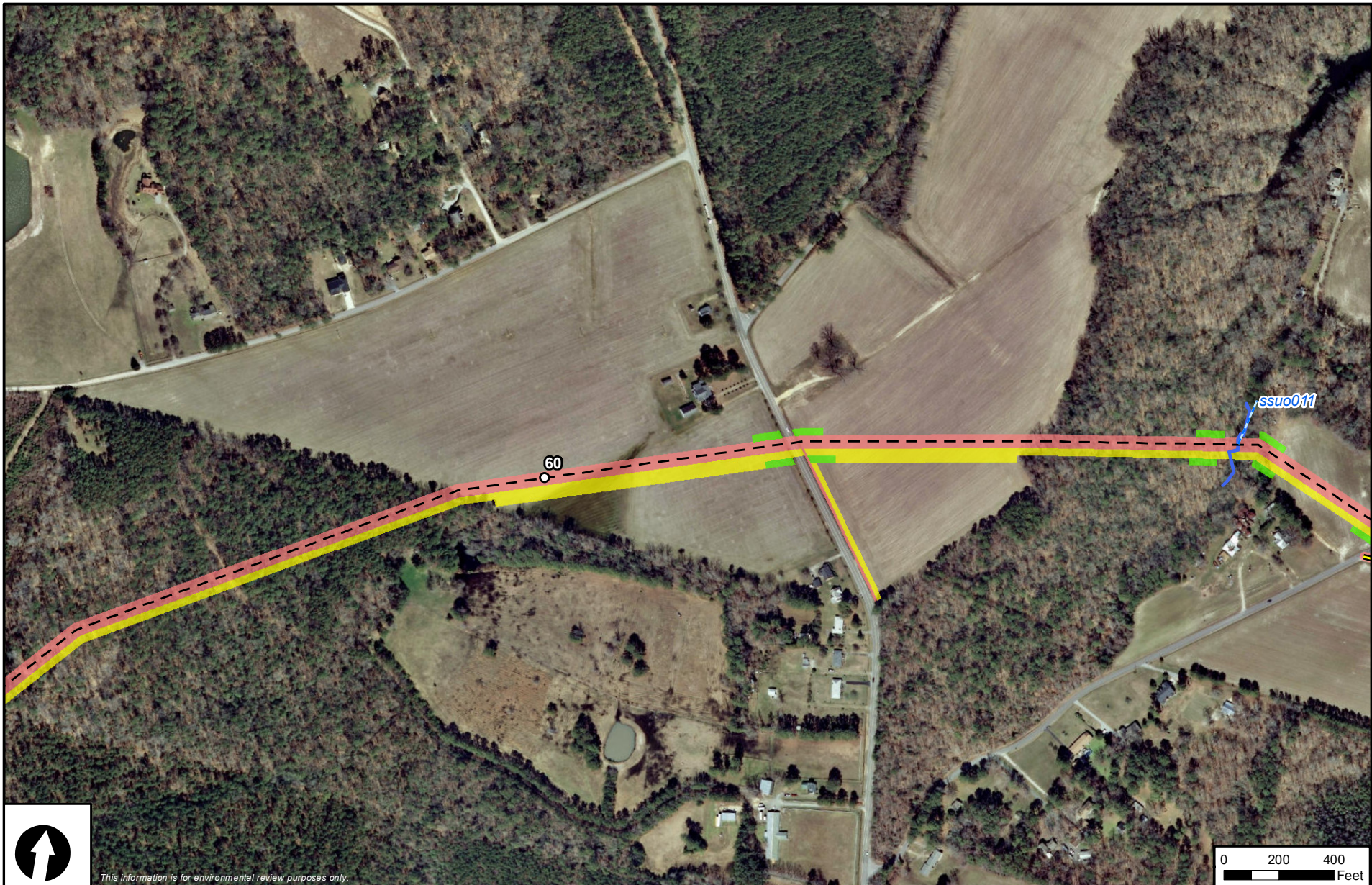


Atlantic Coast Pipeline

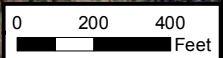
- Atlantic Coast Pipeline
- Access Road
- Workspace**
- Permanent
- Temporary
- Additional Temporary Workspace
- Aboveground Facility
- Milepost
- Wetland
- Waterbody

Atlantic Coast Pipeline
Appendix 2
 Aerial Route Maps
 City of Suffolk, Virginia





This information is for environmental review purposes only.

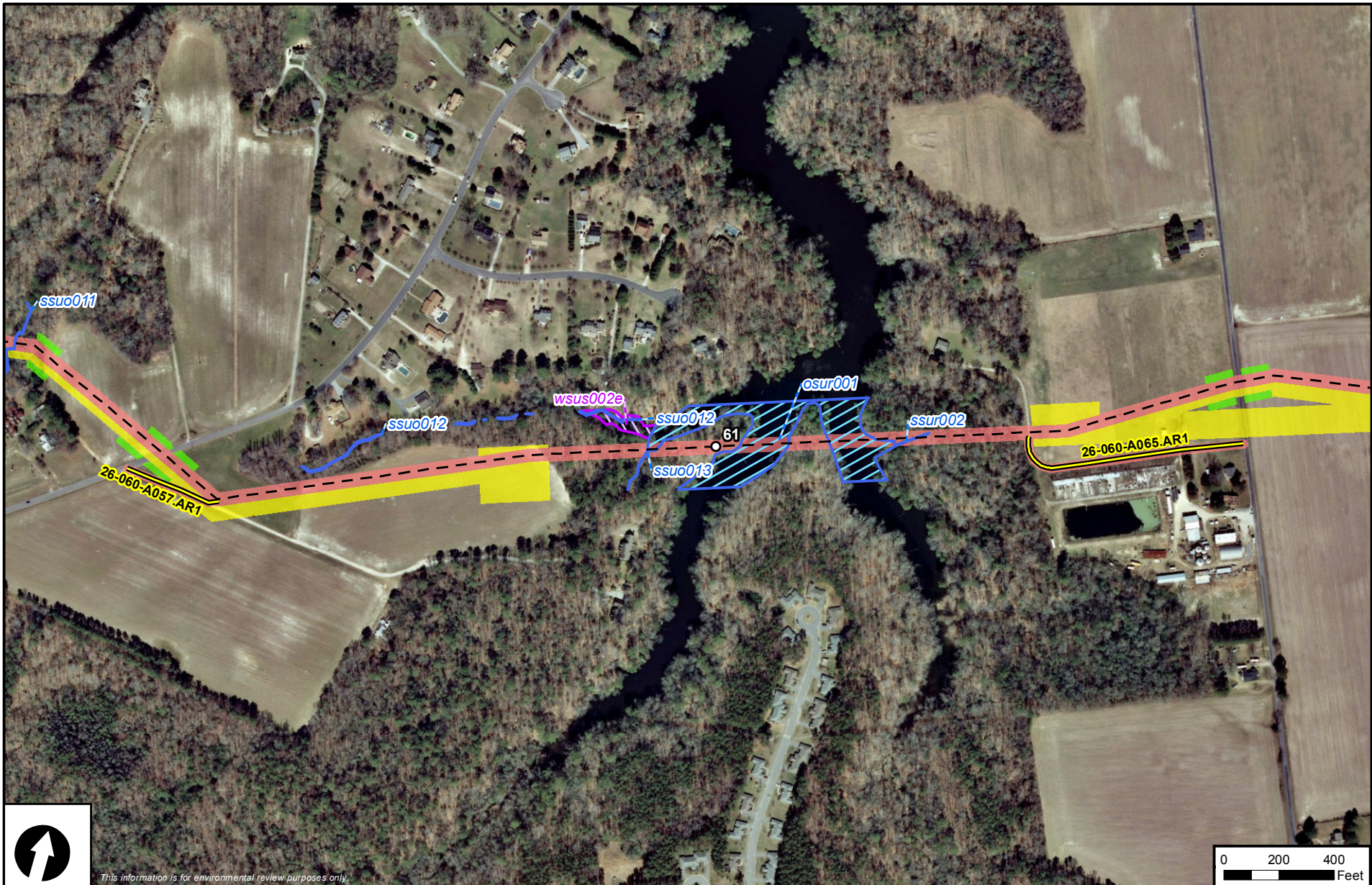


Atlantic Coast Pipeline

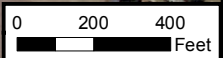
- Atlantic Coast Pipeline
- Access Road
- Workspace**
- Permanent
- Temporary
- Additional Temporary Workspace
- Aboveground Facility
- Milepost
- Wetland
- Waterbody

Atlantic Coast Pipeline
Appendix 2
 Aerial Route Maps
 City of Suffolk, Virginia





This information is for environmental review purposes only.

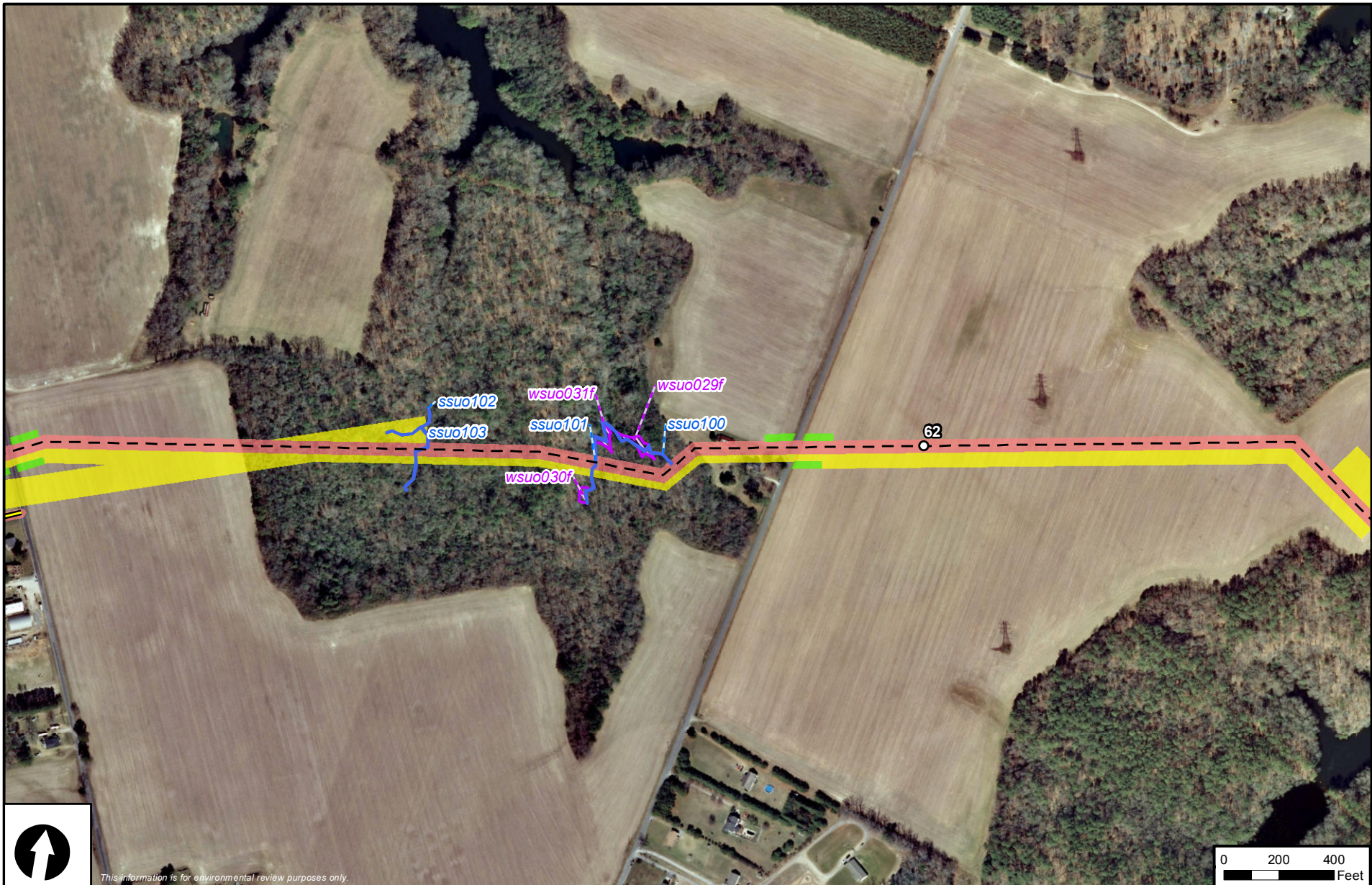


Atlantic Coast Pipeline

- Atlantic Coast Pipeline
- Access Road
- Workspace**
- Permanent
- Temporary
- Additional Temporary Workspace
- Aboveground Facility
- Milepost
- Wetland
- Waterbody

**Atlantic Coast Pipeline
Appendix 2
Aerial Route Maps
City of Suffolk, Virginia**





This information is for environmental review purposes only.

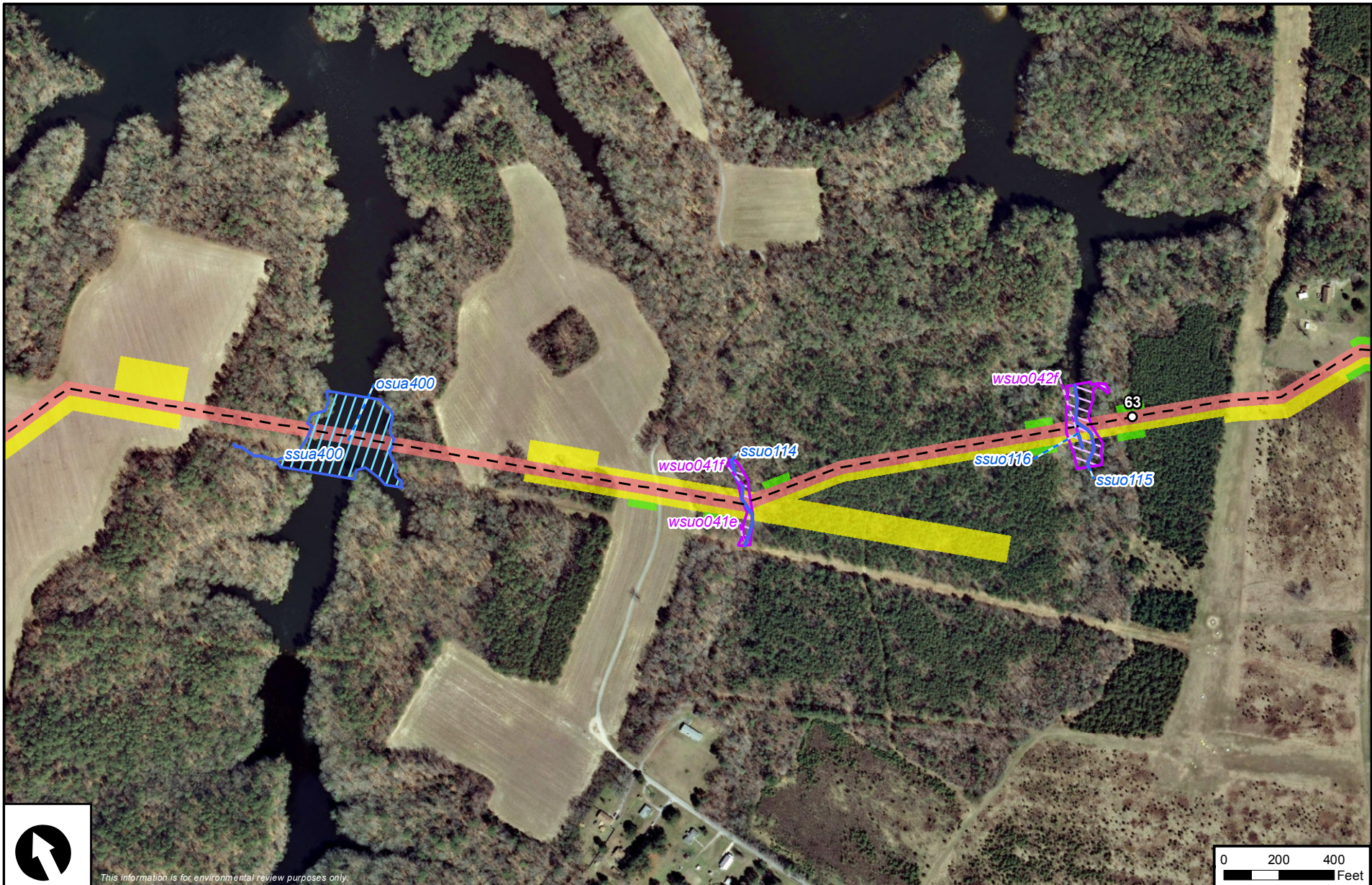


Atlantic Coast Pipeline

- Atlantic Coast Pipeline
- Access Road
- Workspace**
- Permanent
- Temporary
- Additional Temporary Workspace
- Aboveground Facility
- Milepost
- Wetland
- Waterbody

Atlantic Coast Pipeline
Appendix 2
 Aerial Route Maps
 City of Suffolk, Virginia





This information is for environmental review purposes only.

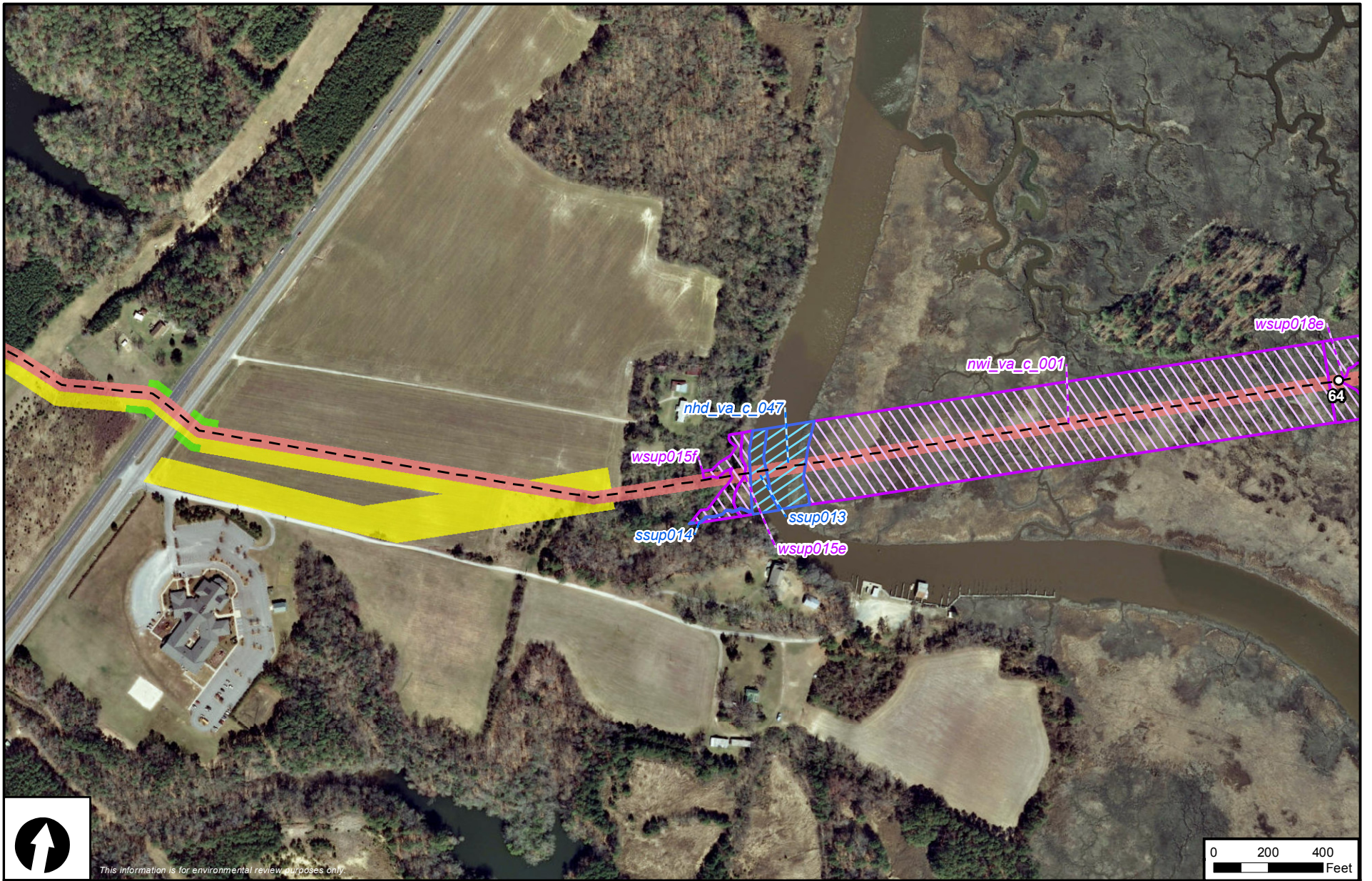


Atlantic Coast Pipeline

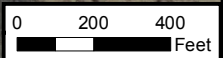
- Atlantic Coast Pipeline
- Access Road
- Workspace**
- Permanent
- Temporary
- Additional Temporary Workspace
- Aboveground Facility
- Milepost
- Wetland
- Waterbody

Atlantic Coast Pipeline
Appendix 2
 Aerial Route Maps
 City of Suffolk, Virginia





This information is for environmental review purposes only.



Atlantic Coast Pipeline

- Atlantic Coast Pipeline
- Access Road
- Workspace**
- Permanent
- Temporary
- Additional Temporary Workspace
- Aboveground Facility
- Milepost
- Wetland
- Waterbody

Atlantic Coast Pipeline
Appendix 2
 Aerial Route Maps
 City of Suffolk, Virginia





This information is for environmental review purposes only.

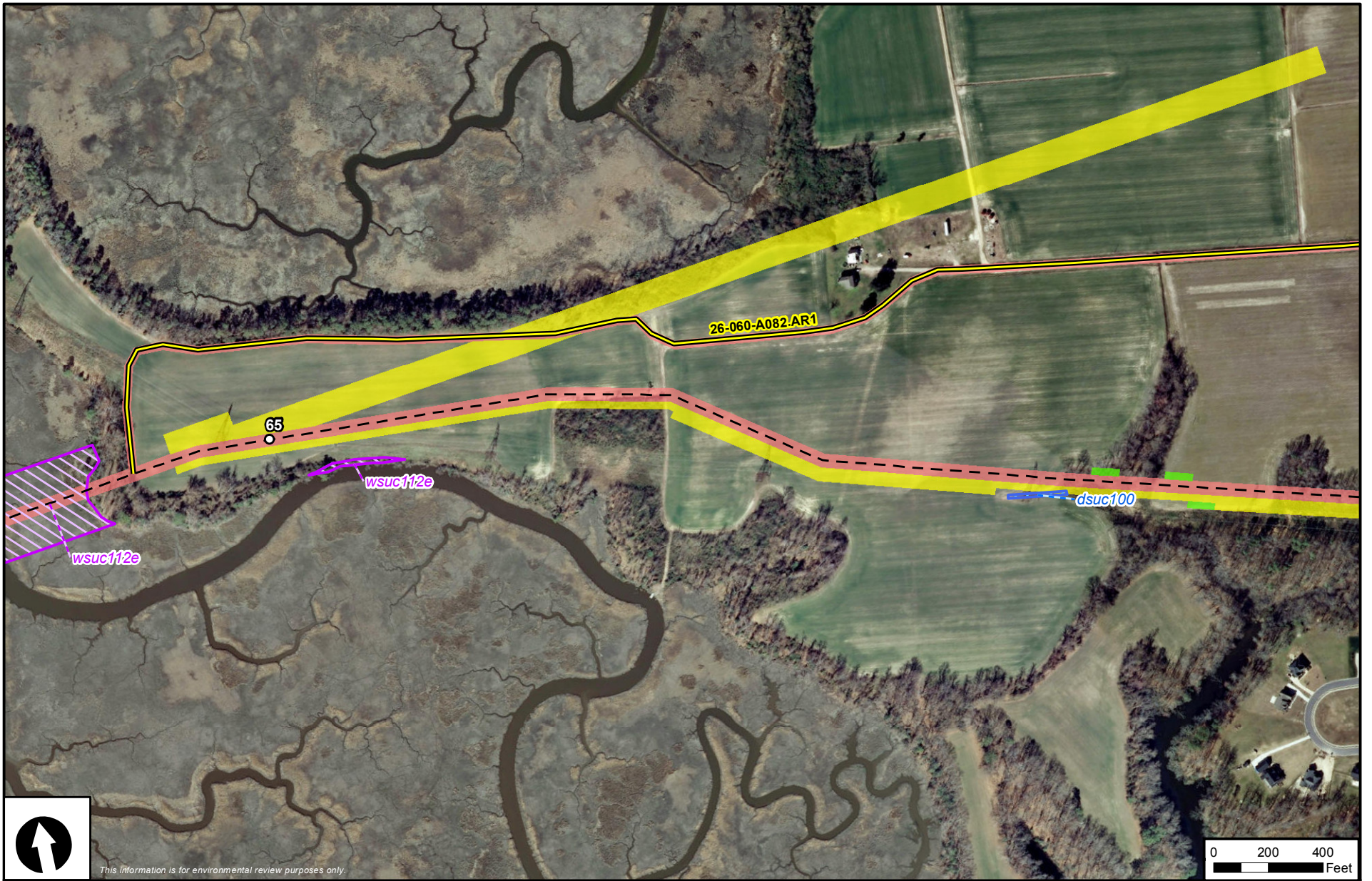


Atlantic Coast Pipeline

- Atlantic Coast Pipeline
- Access Road
- Workspace**
- Permanent
- Temporary
- Additional Temporary Workspace
- Aboveground Facility
- Milepost
- Wetland
- Waterbody

Atlantic Coast Pipeline
Appendix 2
 Aerial Route Maps
 City of Suffolk, Virginia



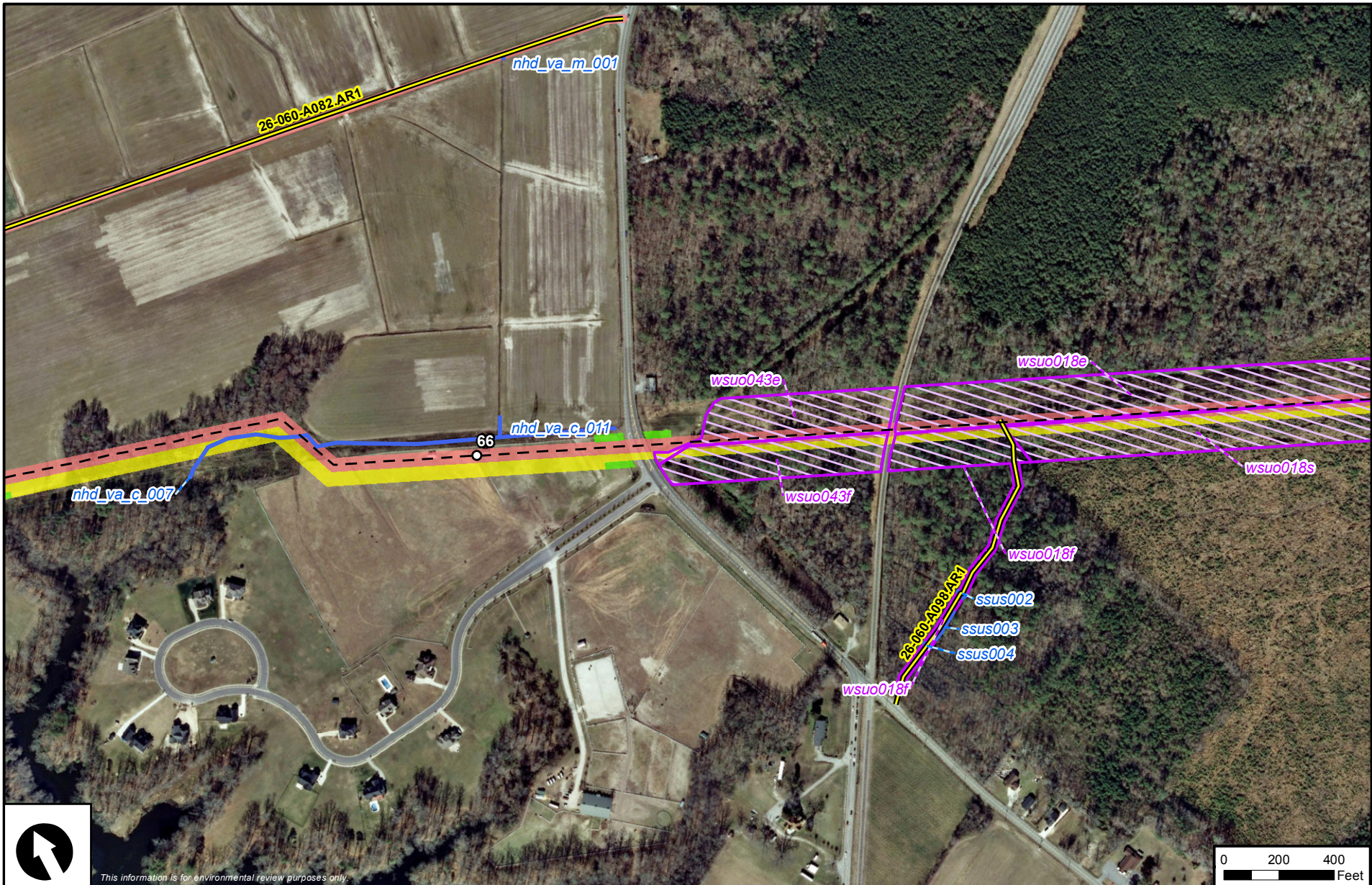


Atlantic Coast Pipeline

- Atlantic Coast Pipeline
- Access Road
- Workspace**
- Permanent
- Temporary
- Additional Temporary Workspace
- Aboveground Facility
- Milepost
- Wetland
- Waterbody

Atlantic Coast Pipeline
Appendix 2
 Aerial Route Maps
 City of Suffolk, Virginia





This information is for environmental review purposes only.

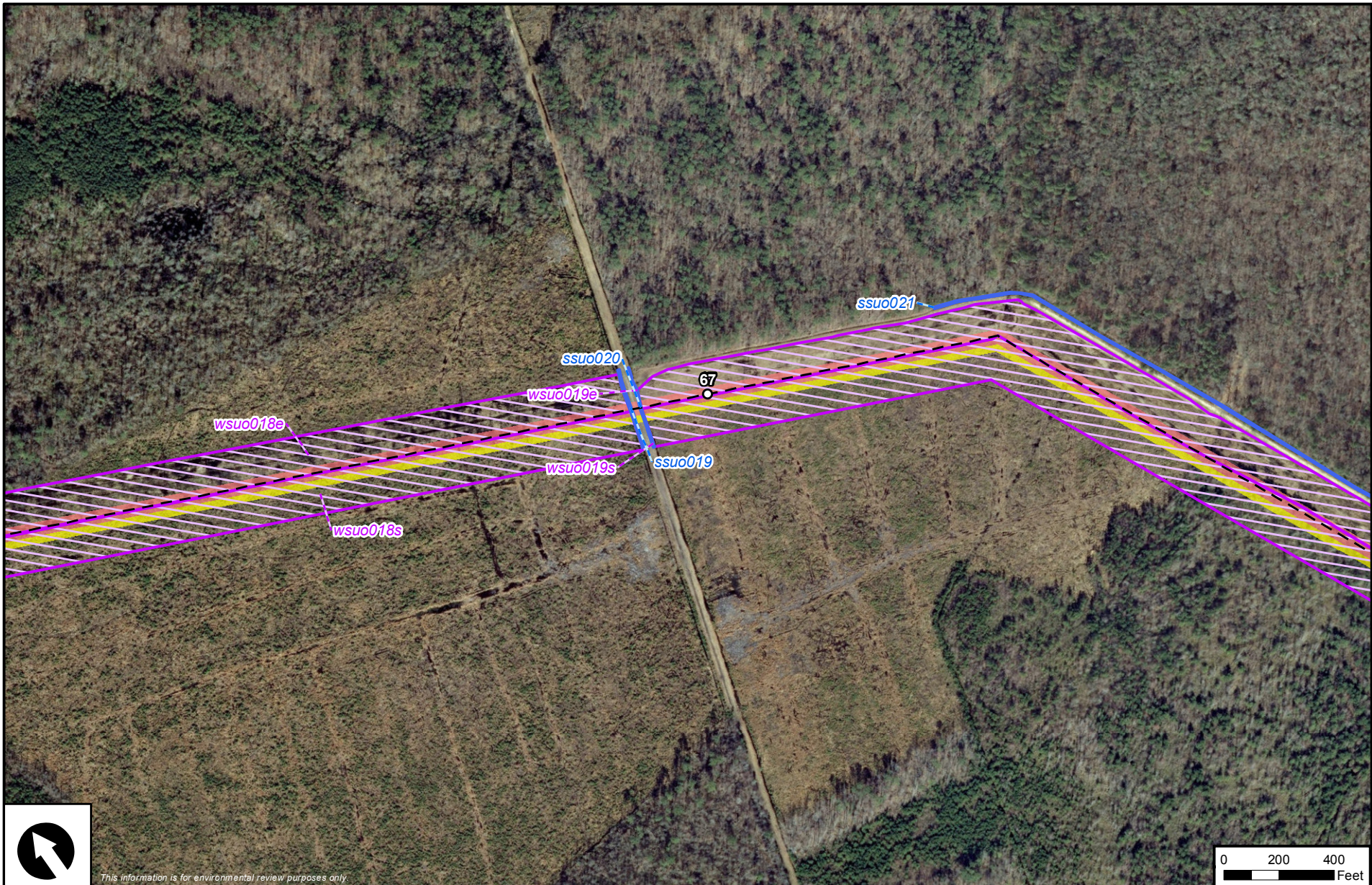


Atlantic Coast Pipeline

- Atlantic Coast Pipeline
- Access Road
- Workspace**
- Permanent
- Temporary
- Additional Temporary Workspace
- Aboveground Facility
- Milepost
- Wetland
- Waterbody

**Atlantic Coast Pipeline
Appendix 2
Aerial Route Maps
City of Suffolk, Virginia**





This information is for environmental review purposes only.

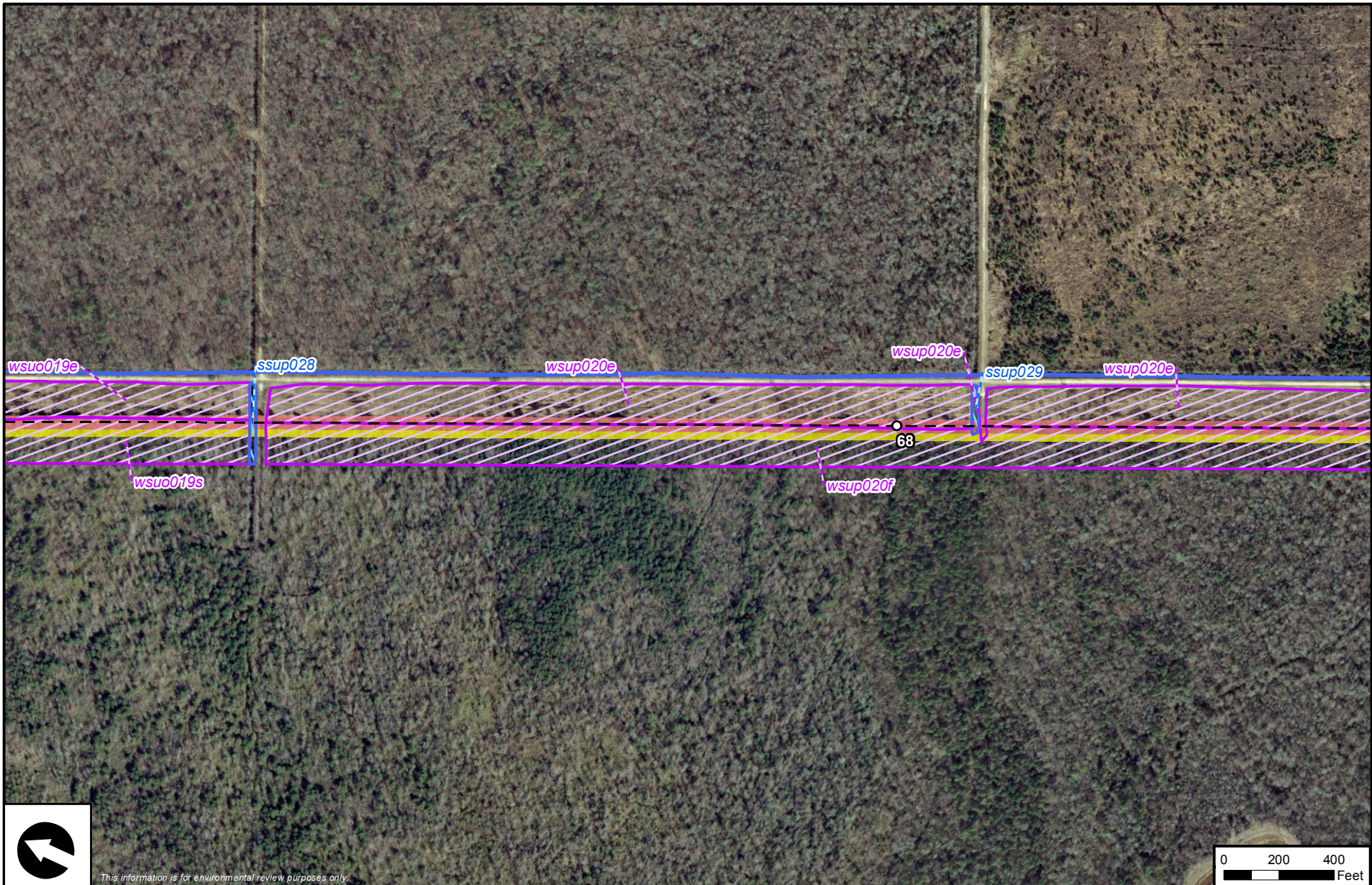


Atlantic Coast Pipeline

- Atlantic Coast Pipeline
- Access Road
- Workspace**
- Permanent
- Temporary
- Additional Temporary Workspace
- Aboveground Facility
- Milepost
- Wetland
- Waterbody

Atlantic Coast Pipeline
Appendix 2
 Aerial Route Maps
 City of Suffolk, Virginia





This information is for environmental review purposes only.

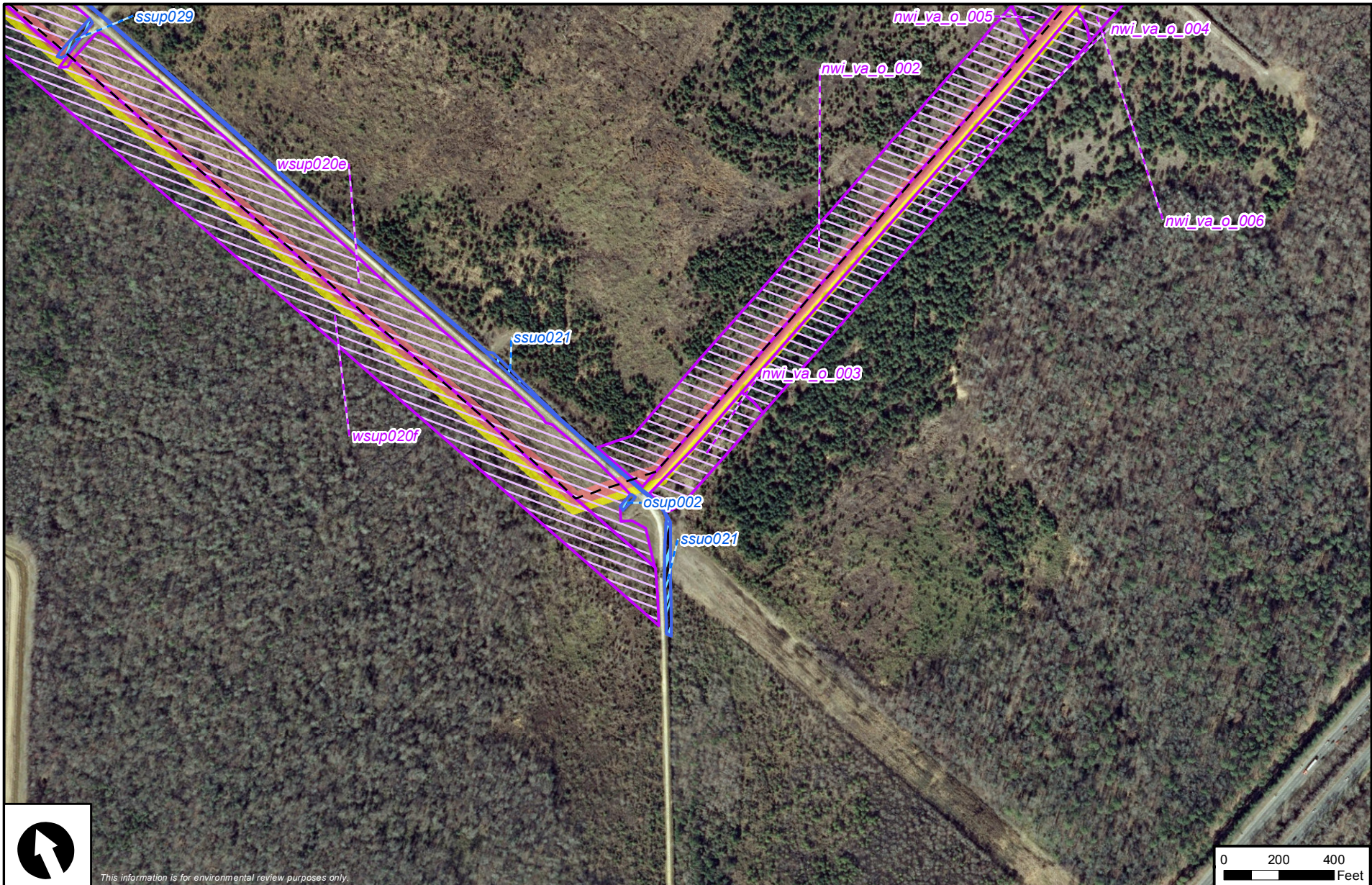


Atlantic Coast Pipeline

- Atlantic Coast Pipeline
- Access Road
- Workspace**
- Permanent
- Temporary
- Additional Temporary Workspace
- Aboveground Facility
- Milepost
- Wetland
- Waterbody

Atlantic Coast Pipeline
Appendix 2
 Aerial Route Maps
 City of Suffolk, Virginia





This information is for environmental review purposes only.

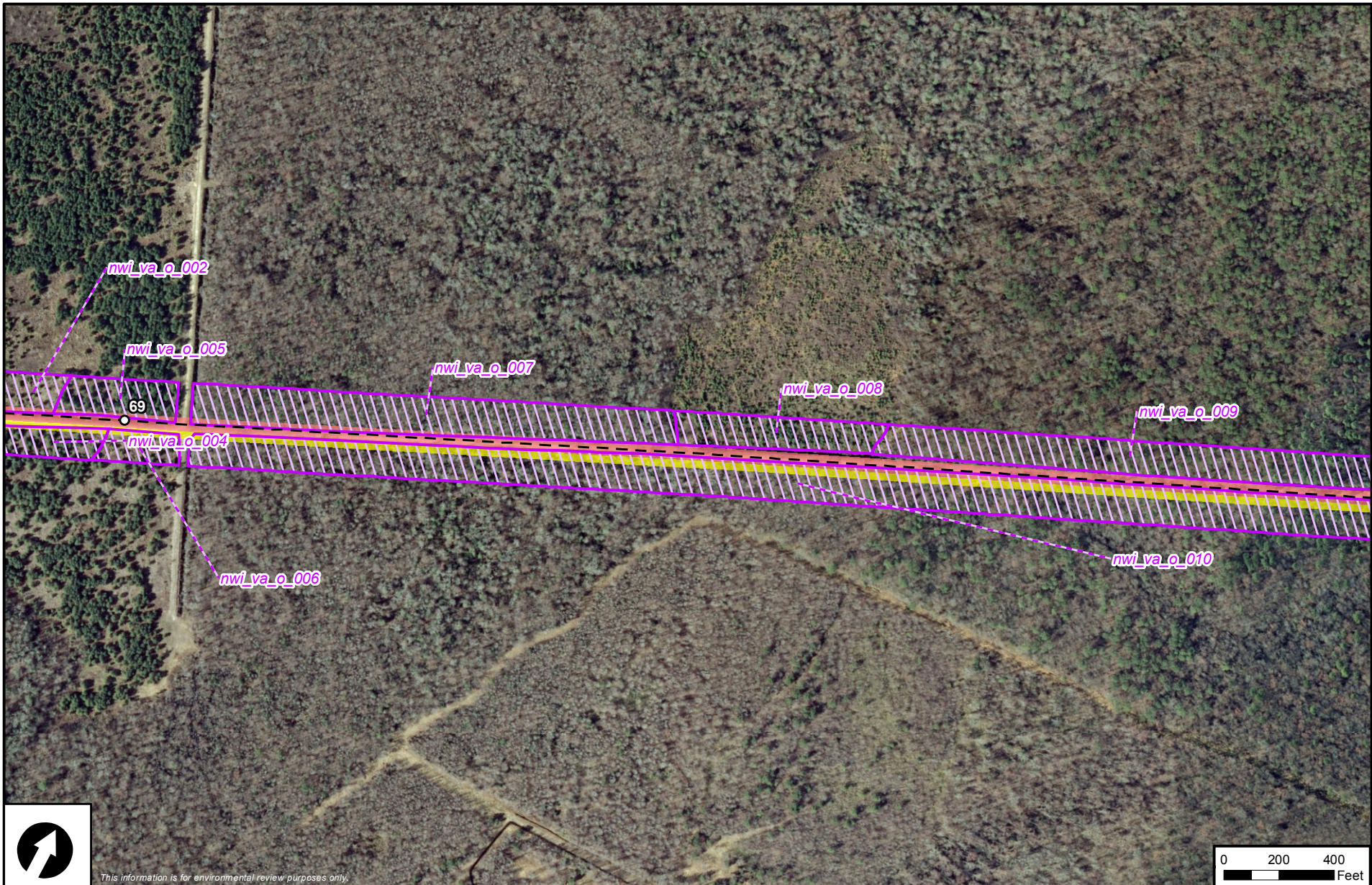


Atlantic Coast Pipeline

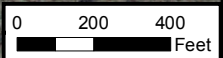
- Atlantic Coast Pipeline
- Access Road
- Workspace**
- Permanent
- Temporary
- Additional Temporary Workspace
- Aboveground Facility
- Milepost
- Wetland
- Waterbody

Atlantic Coast Pipeline
Appendix 2
 Aerial Route Maps
 City of Suffolk, Virginia





This information is for environmental review purposes only.

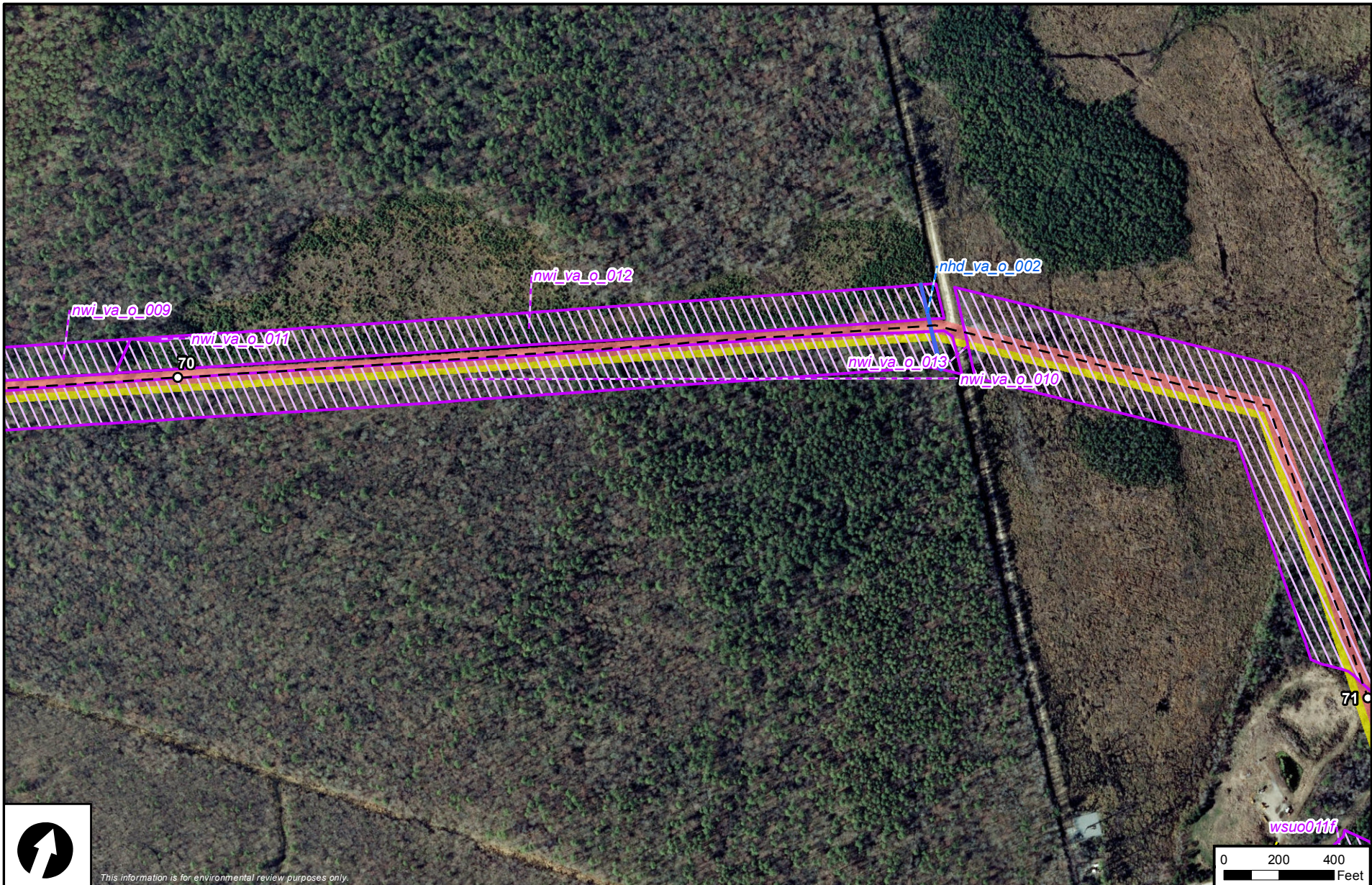


Atlantic Coast Pipeline

- Atlantic Coast Pipeline
- Access Road
- Workspace**
- Permanent
- Temporary
- Additional Temporary Workspace
- Aboveground Facility
- Milepost
- Wetland
- Waterbody

Atlantic Coast Pipeline
Appendix 2
 Aerial Route Maps
 City of Suffolk, Virginia





This information is for environmental review purposes only.

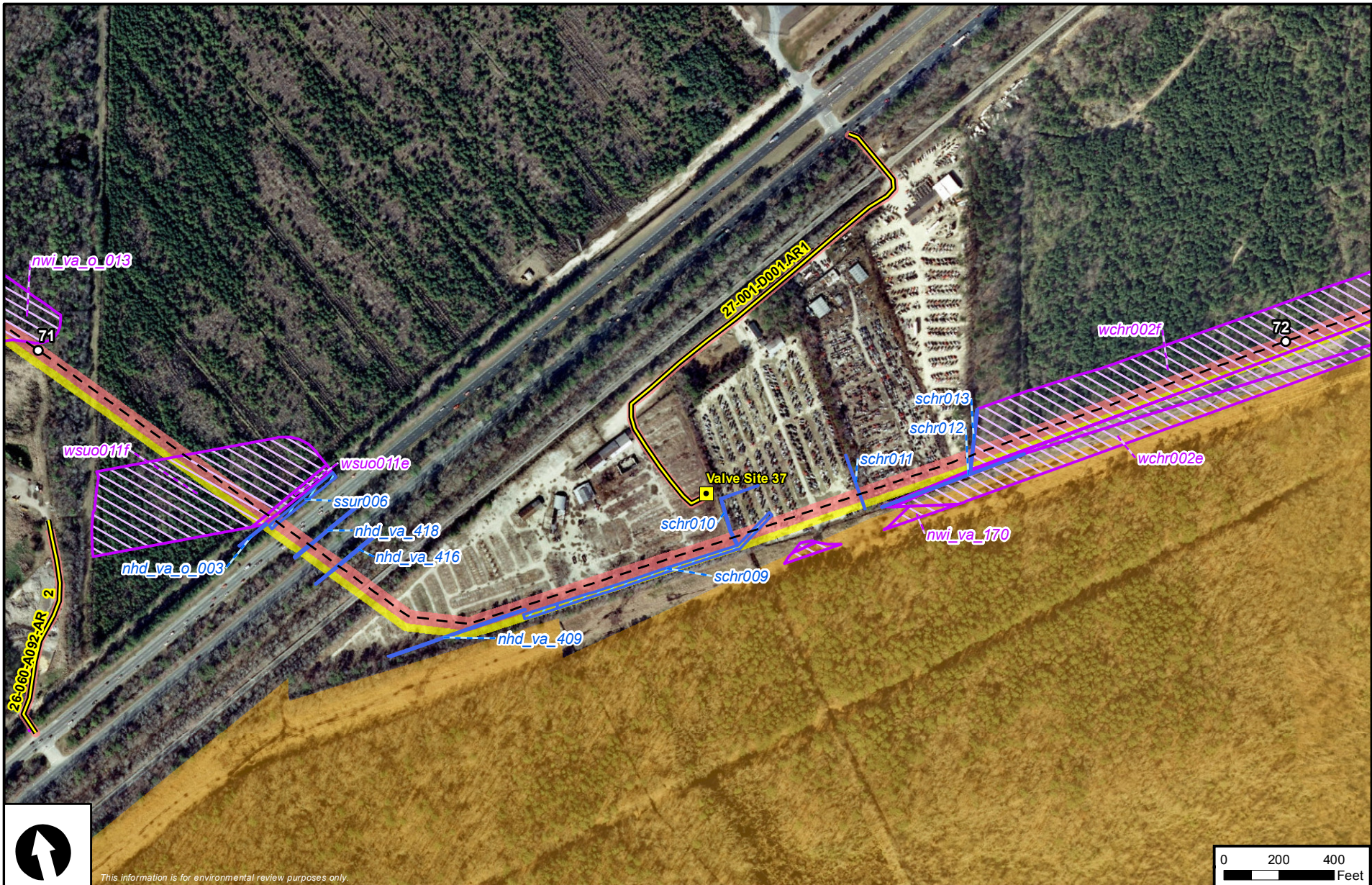


Atlantic Coast Pipeline

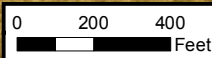
- Atlantic Coast Pipeline
- Access Road
- Workspace**
- Permanent
- Temporary
- Additional Temporary Workspace
- Aboveground Facility
- Milepost
- Wetland
- Waterbody

Atlantic Coast Pipeline
Appendix 2
 Aerial Route Maps
 City of Suffolk, Virginia





This information is for environmental review purposes only.

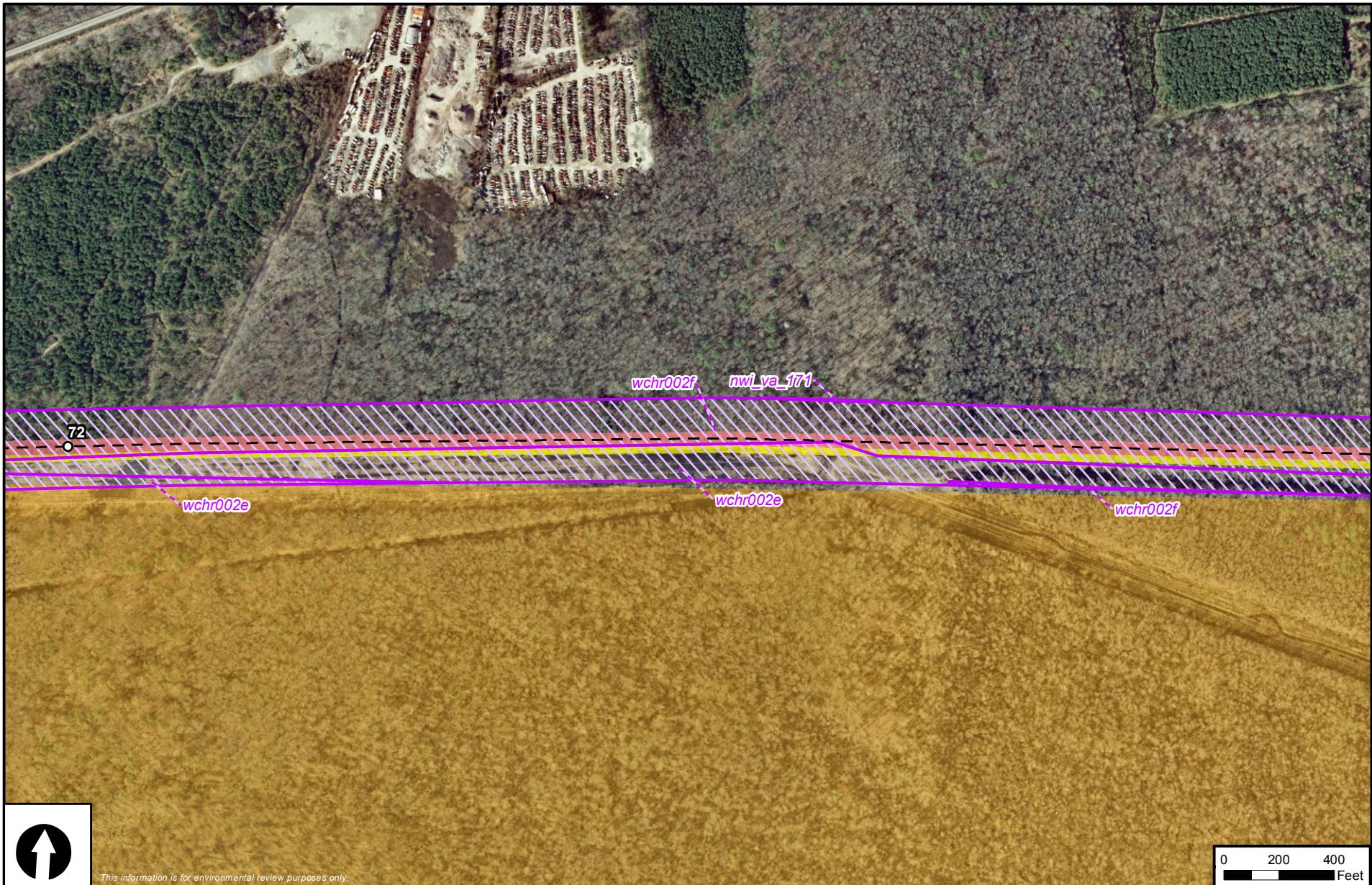


Atlantic Coast Pipeline

- Atlantic Coast Pipeline
- Access Road
- Workspace**
- Permanent
- Temporary
- Additional Temporary Workspace
- Aboveground Facility
- Milepost
- Wetland
- Waterbody

Atlantic Coast Pipeline
Appendix 2
 Aerial Route Maps
 City of Chesapeake, Virginia





This information is for environmental review purposes only.



Atlantic Coast Pipeline

- — Atlantic Coast Pipeline
- Access Road
- Workspace**
- Permanent
- Temporary
- Additional Temporary Workspace
- Aboveground Facility
- Milepost
- Wetland
- Waterbody

Atlantic Coast Pipeline
Appendix 2
 Aerial Route Maps
 City of Chesapeake, Virginia





This information is for environmental review purposes only.

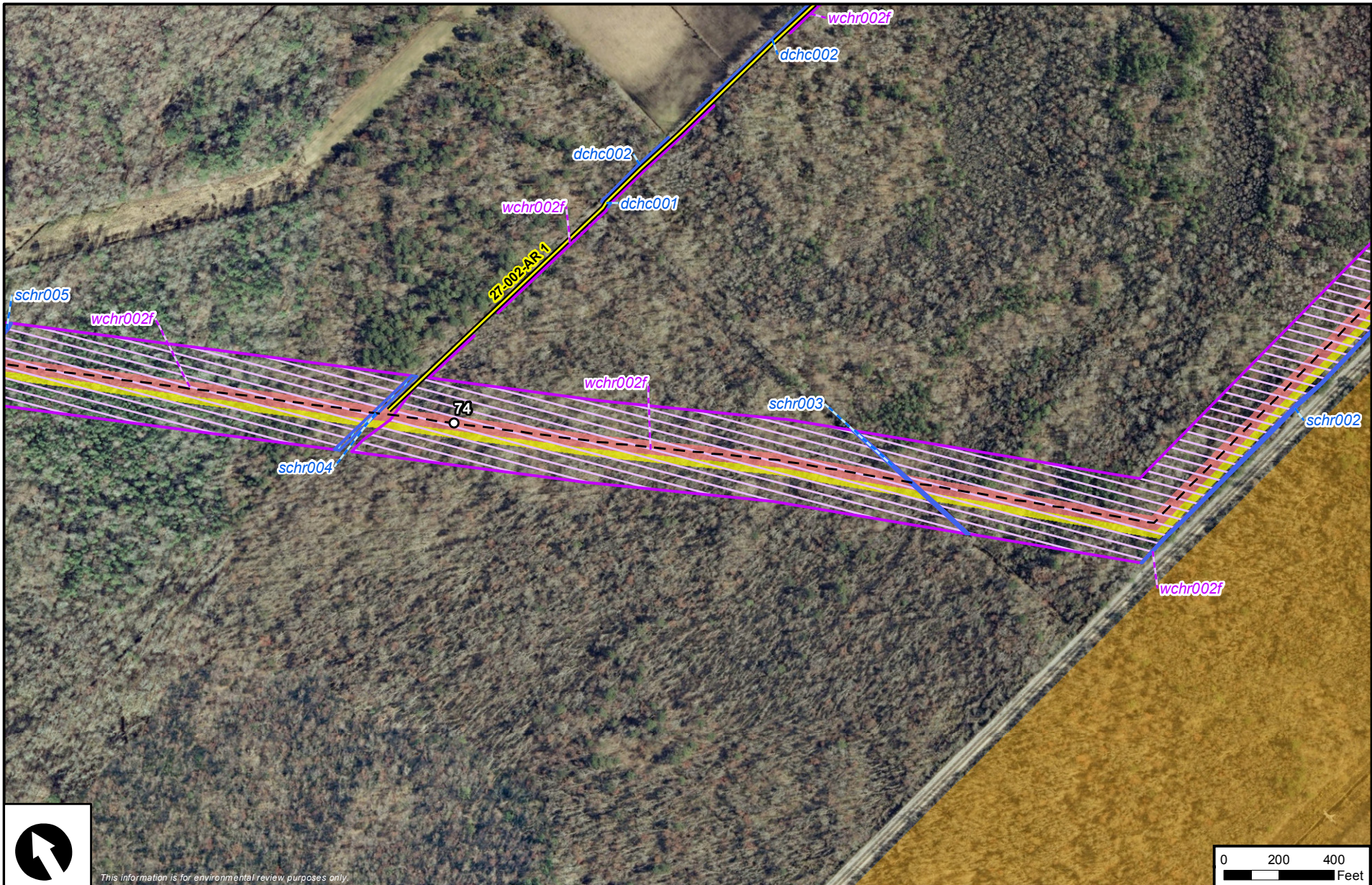


Atlantic Coast Pipeline

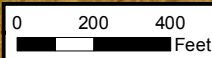
- Atlantic Coast Pipeline
- Access Road
- Workspace**
- Permanent
- Temporary
- Additional Temporary Workspace
- Aboveground Facility
- Milepost
- Wetland
- Waterbody

Atlantic Coast Pipeline
Appendix 2
 Aerial Route Maps
 City of Chesapeake, Virginia





This information is for environmental review purposes only.



Atlantic Coast Pipeline

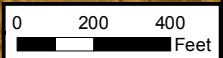
- Atlantic Coast Pipeline
- Access Road
- Workspace**
- Permanent
- Temporary
- Additional Temporary Workspace
- Aboveground Facility
- Milepost
- Wetland
- Waterbody

Atlantic Coast Pipeline
Appendix 2
 Aerial Route Maps
 City of Chesapeake, Virginia





This information is for environmental review purposes only.



Atlantic Coast Pipeline

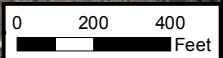
- Atlantic Coast Pipeline
- Access Road
- Workspace**
- Permanent
- Temporary
- Additional Temporary Workspace
- Aboveground Facility
- Milepost
- Wetland
- Waterbody

Atlantic Coast Pipeline
Appendix 2
 Aerial Route Maps
 City of Chesapeake, Virginia





This information is for environmental review purposes only.

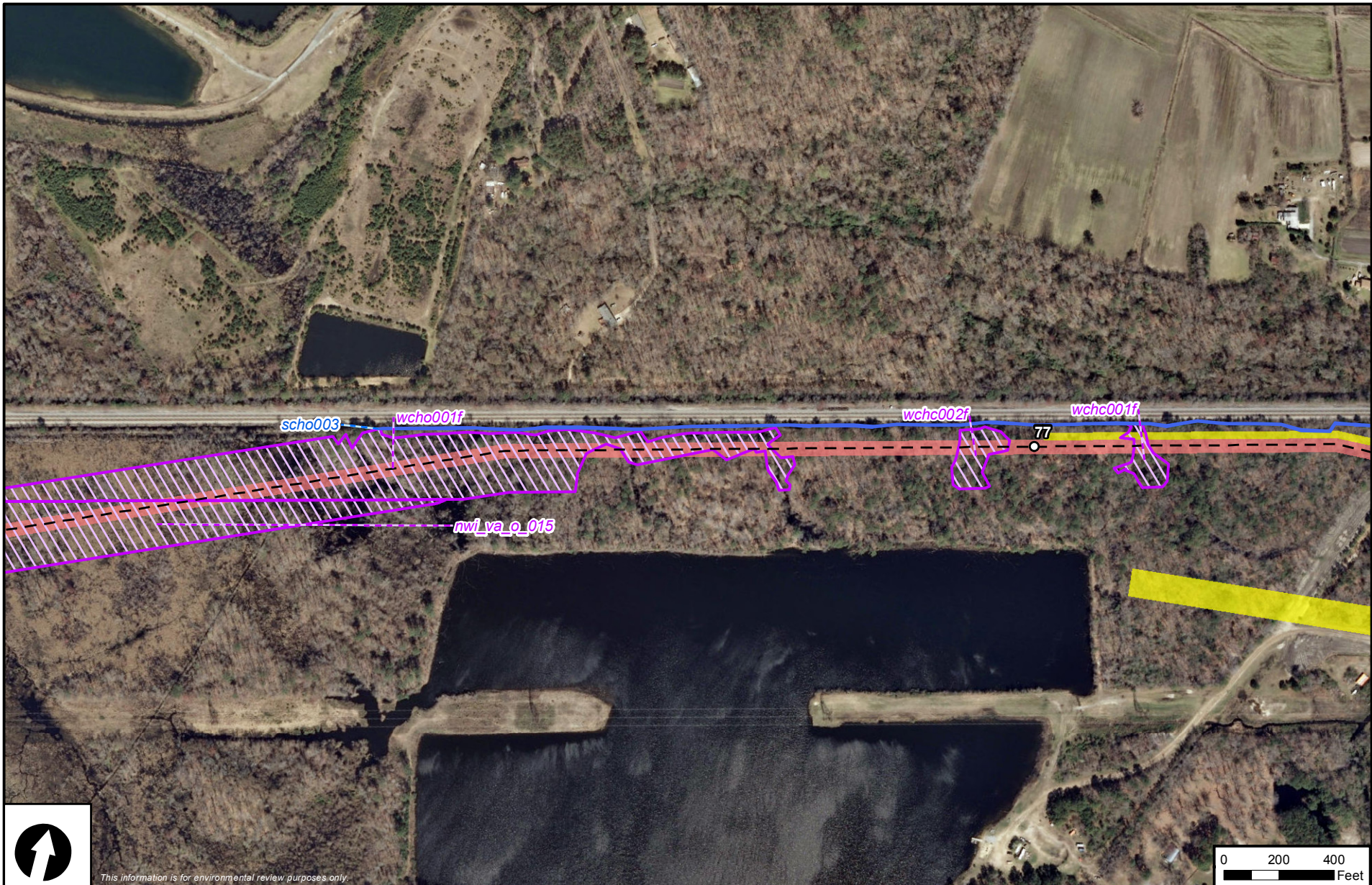


Atlantic Coast Pipeline

- Atlantic Coast Pipeline
- Access Road
- Workspace**
- Permanent
- Temporary
- Additional Temporary Workspace
- Aboveground Facility
- Milepost
- Wetland
- Waterbody

Atlantic Coast Pipeline
Appendix 2
 Aerial Route Maps
 City of Chesapeake, Virginia





This information is for environmental review purposes only.

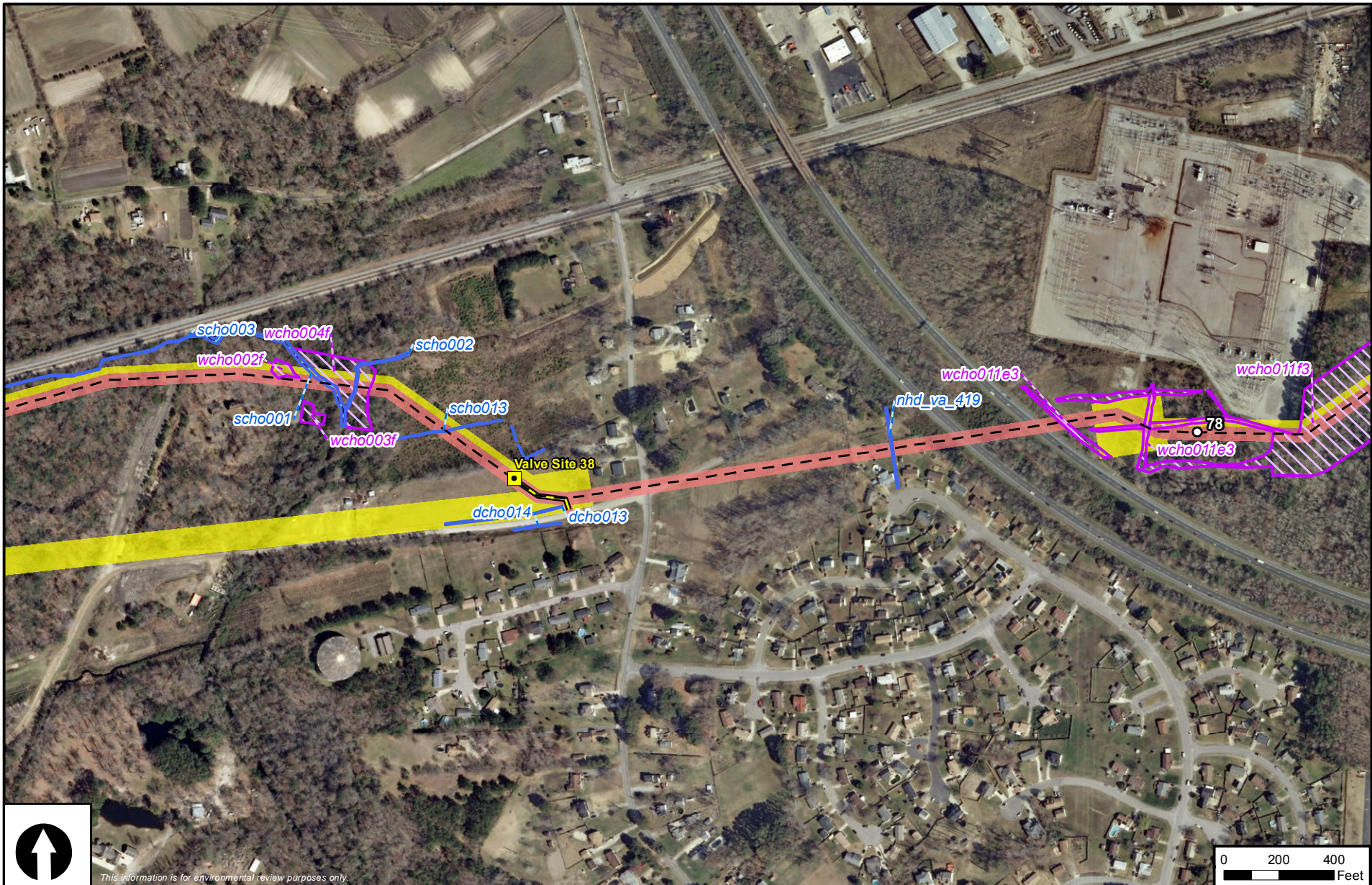


Atlantic Coast Pipeline

- Atlantic Coast Pipeline
- Access Road
- Workspace**
- Permanent
- Temporary
- Additional Temporary Workspace
- Aboveground Facility
- Milepost
- Wetland
- Waterbody

Atlantic Coast Pipeline
Appendix 2
 Aerial Route Maps
 City of Chesapeake, Virginia





This information is for environmental review purposes only.

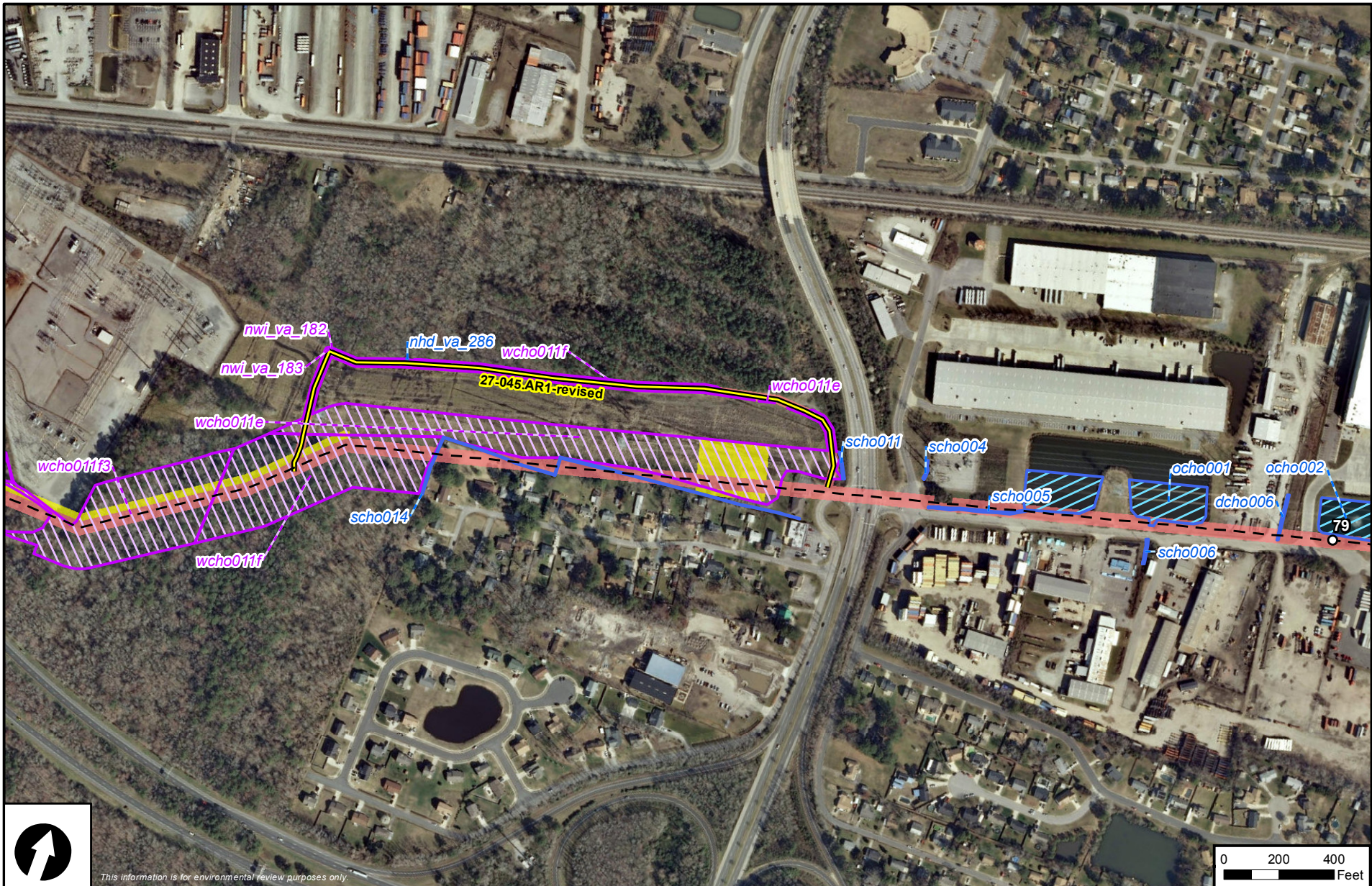


Atlantic Coast Pipeline

- Atlantic Coast Pipeline
- Access Road
- Workspace**
- Permanent
- Temporary
- Additional Temporary Workspace
- Aboveground Facility
- Milepost
- Wetland
- Waterbody

Atlantic Coast Pipeline
Appendix 2
 Aerial Route Maps
 City of Chesapeake, Virginia





This information is for environmental review purposes only.

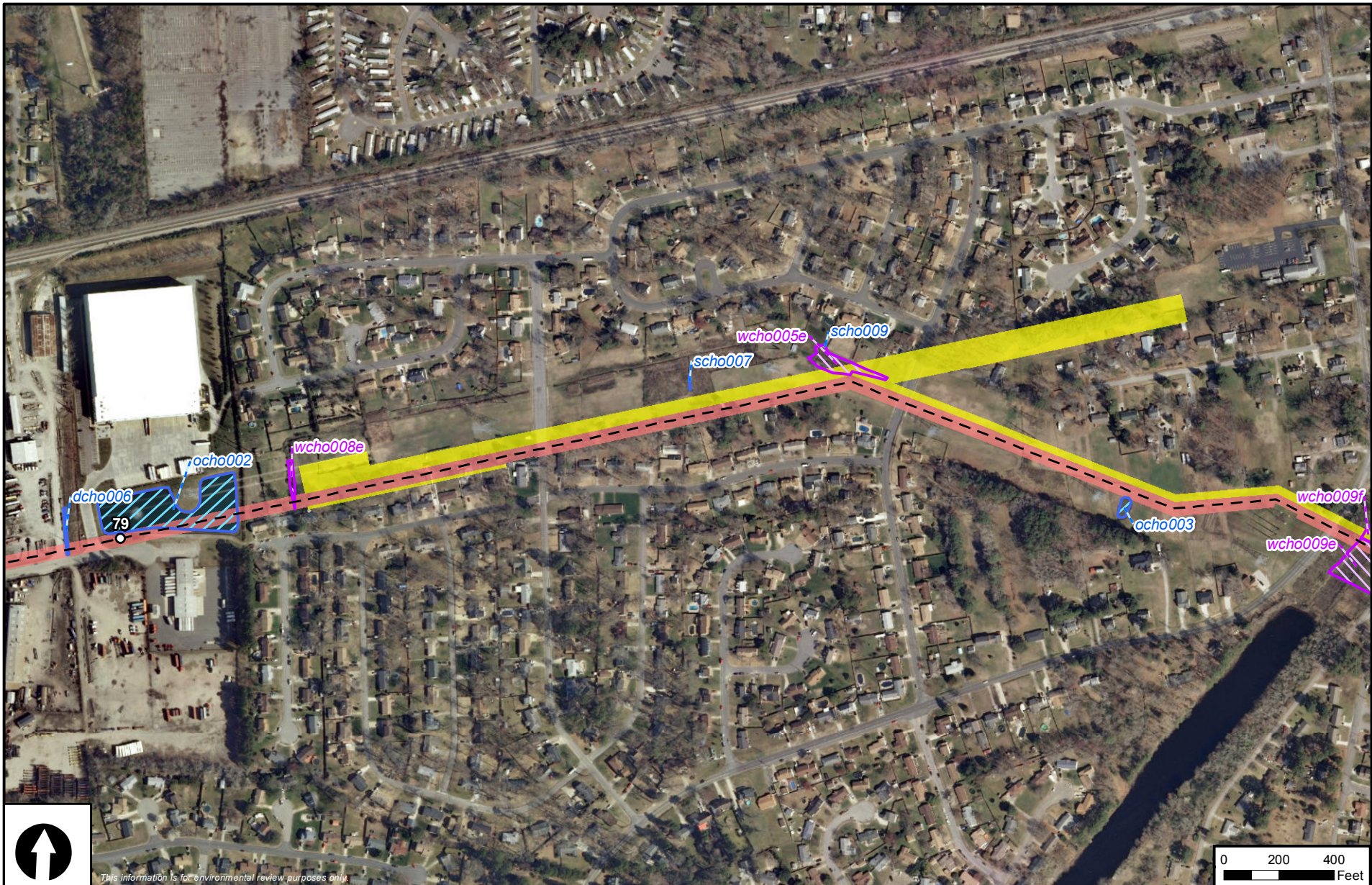


Atlantic Coast Pipeline

- Atlantic Coast Pipeline
- Access Road
- Workspace**
- Permanent
- Temporary
- Additional Temporary Workspace
- Aboveground Facility
- Milepost
- Wetland
- Waterbody

**Atlantic Coast Pipeline
Appendix 2
Aerial Route Maps
City of Chesapeake, Virginia**





This information is for environmental review purposes only.

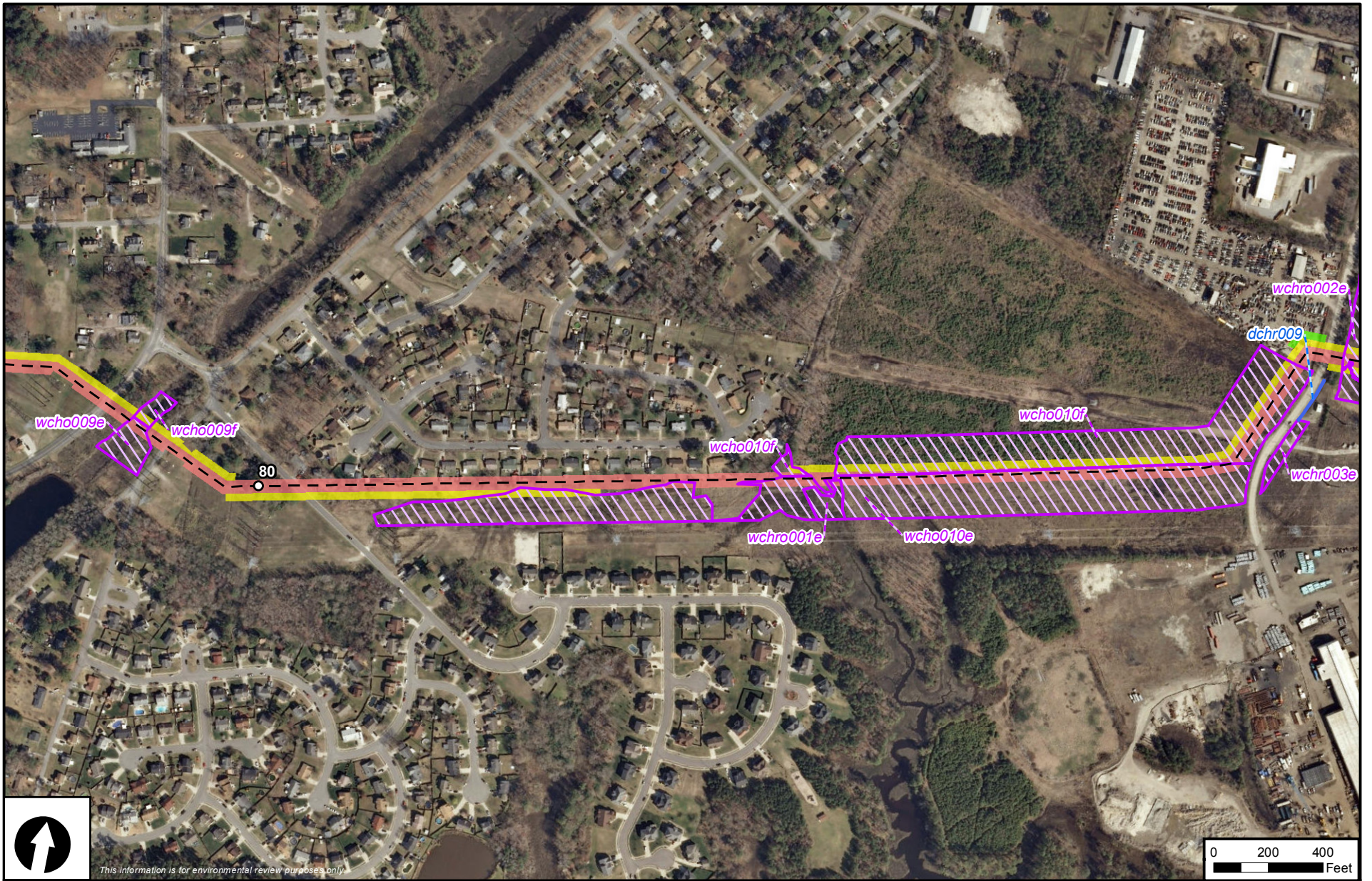


Atlantic Coast Pipeline

- Atlantic Coast Pipeline
- Access Road
- Workspace**
- Permanent
- Temporary
- Additional Temporary Workspace
- Aboveground Facility
- Milepost
- Wetland
- Waterbody

Atlantic Coast Pipeline
Appendix 2
 Aerial Route Maps
 City of Chesapeake, Virginia





This information is for environmental review purposes only.

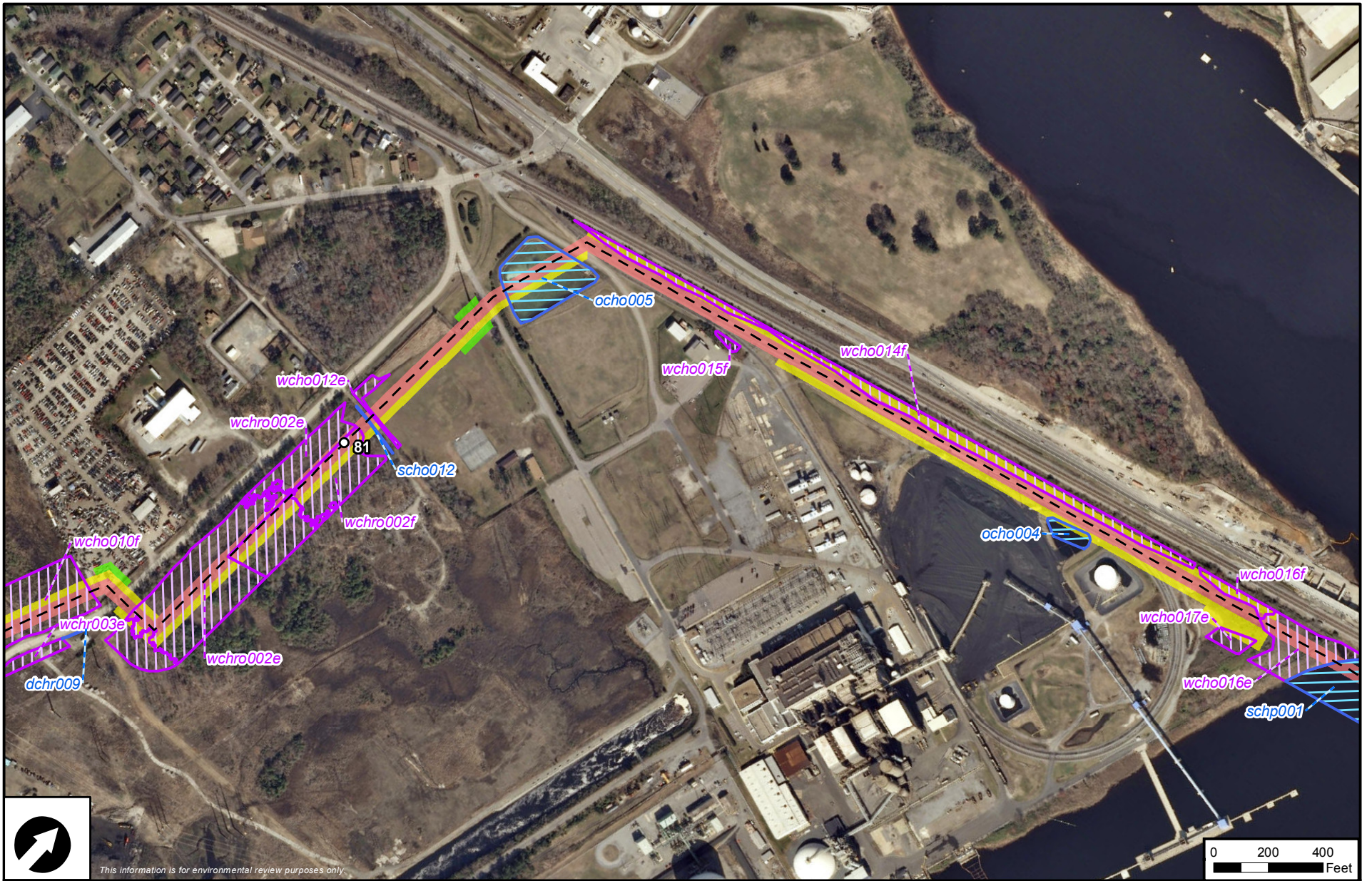


Atlantic Coast Pipeline

- Atlantic Coast Pipeline
- Access Road
- Workspace**
- Permanent
- Temporary
- Additional Temporary Workspace
- Aboveground Facility
- Milepost
- Wetland
- Waterbody

Atlantic Coast Pipeline
Appendix 2
 Aerial Route Maps
 City of Chesapeake, Virginia





This information is for environmental review purposes only.

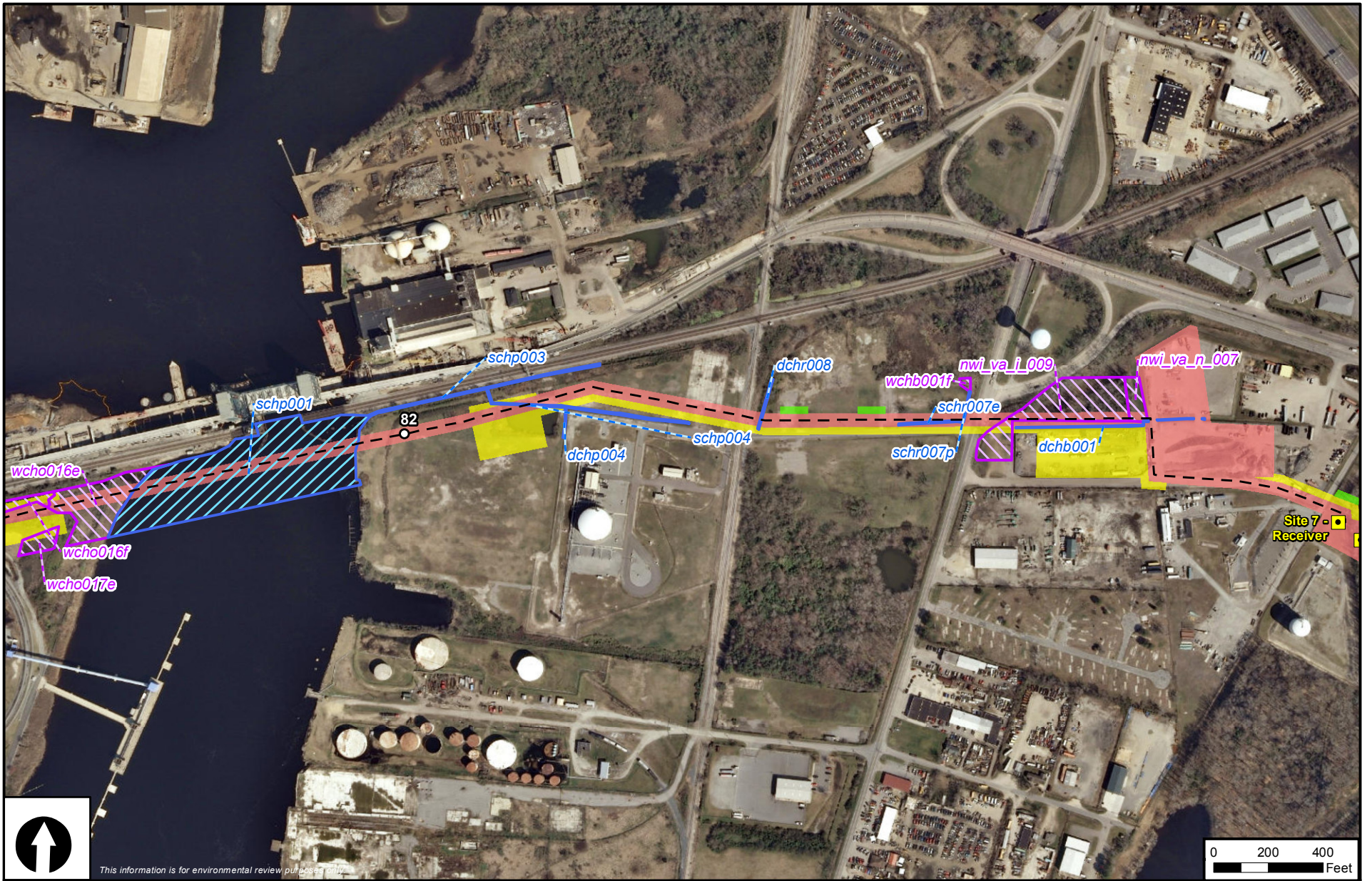


Atlantic Coast Pipeline

- Atlantic Coast Pipeline
- Access Road
- Workspace**
- Permanent
- Temporary
- Additional Temporary Workspace
- Aboveground Facility
- Milepost
- Wetland
- Waterbody

Atlantic Coast Pipeline
Appendix 2
 Aerial Route Maps
 City of Chesapeake, Virginia





This information is for environmental review purposes only.

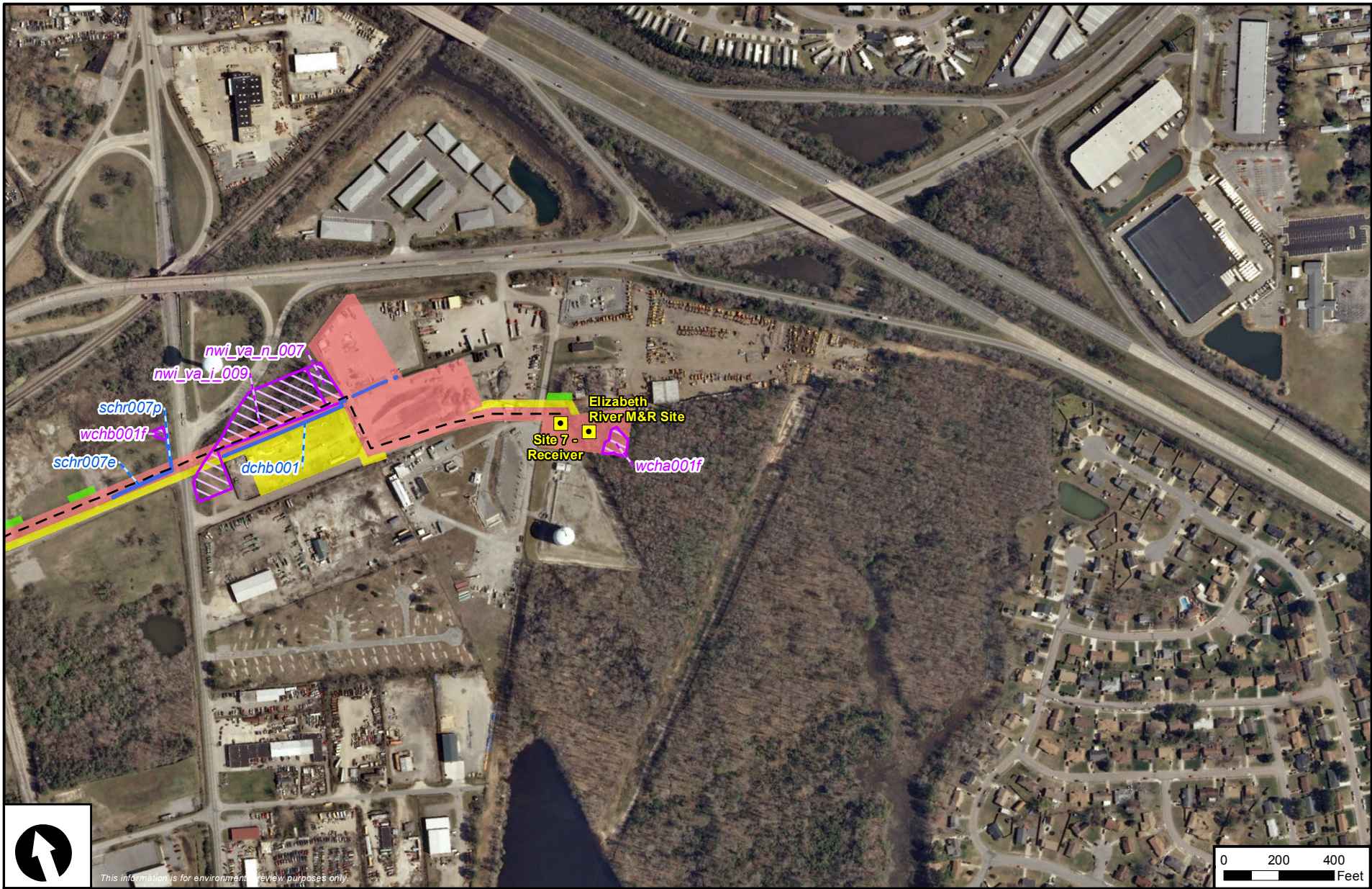


Atlantic Coast Pipeline

- Atlantic Coast Pipeline
- Access Road
- Workspace**
- Permanent
- Temporary
- Additional Temporary Workspace
- Aboveground Facility
- Milepost
- Wetland
- Waterbody

Atlantic Coast Pipeline
Appendix 2
 Aerial Route Maps
 City of Chesapeake, Virginia





This information is for environmental review purposes only.



Atlantic Coast Pipeline

- Atlantic Coast Pipeline
- Access Road
- Workspace**
- Permanent
- Temporary
- Additional Temporary Workspace
- Aboveground Facility
- Milepost
- Wetland
- Waterbody

Atlantic Coast Pipeline
Appendix 2
 Aerial Route Maps
 City of Chesapeake, Virginia






**ATLANTIC COAST PIPELINE, LLC
ATLANTIC COAST PIPELINE**

VCP Consistency Certification

APPENDIX 3

Locations of Utilities at the Elizabeth River M&R Station



-  Site Boundary
-  ACP Centerline
-  Electric Transmission

Atlantic Coast Pipeline
Appendix 3
 Locations of Utilities at the Elizabeth
 River M and R Station



**ATLANTIC COAST PIPELINE, LLC
ATLANTIC COAST PIPELINE**

VCP Consistency Certification

**APPENDIX 4
Waterbodies Crossed and Crossing Methods for
the Atlantic Coast Pipeline Coastal Zone**

APPENDIX 4

Waterbodies Crossed and Crossing Methods for the Atlantic Coast Pipeline Coastal Zone

| Mile post | Feature ID ^a | Waterbody Name | Flow Regime | Approximate Crossing Width (feet) ^b | Crossing Method | State Water Quality Classification | Fishery ^c | Time Restrictions ^d | Latitude | Longitude |
|-----------|-------------------------|-------------------------|--------------|--|-----------------------------|--|------------------------|--------------------------------|----------|-----------|
| 38.6 | ssoa010 | Blackwater River | Perennial | 208 | HDD | Aquatic Life, Migratory Fish Spawning and Nursery | Anadromous Fish | February 15 to June 30 | 36.63053 | -76.89127 |
| 39.4 | ssua004 | UNT to Blackwater River | Perennial | 5 | 1) Dam and Pump 2) Flume | UNT to Aquatic Life, Migratory Fish Spawning and Nursery | UNT to Anadromous Fish | February 15 to June 30 | 36.63417 | -76.87836 |
| 39.5 | dsua001 | UNT to Blackwater River | Canal/Ditch | 4 | 1) Dam and Pump 2) Flume | UNT to Aquatic Life, Migratory Fish Spawning and Nursery | UNT to Anadromous Fish | February 15 to June 30 | 36.63452 | -76.87612 |
| 39.7 | ssua005 | UNT to Blackwater River | Intermittent | 3 | Dam and Pump | UNT to Aquatic Life, Migratory Fish Spawning and Nursery | UNT to Anadromous Fish | February 15 to June 30 | 36.63434 | -76.87267 |
| 40.1 | ssua007 | UNT to Blackwater River | Perennial | 8 | Dam and Pump | UNT to Aquatic Life, Migratory Fish Spawning and Nursery | UNT to Anadromous Fish | February 15 to June 30 | 36.63332 | -76.86540 |
| 40.2 | ssua008 | UNT to Blackwater River | Perennial | 7 | Dam and Pump | UNT to Aquatic Life, Migratory Fish Spawning and Nursery | UNT to Anadromous Fish | February 15 to June 30 | 36.63373 | -76.86433 |
| 40.5 | dsuc053 | UNT to Blackwater River | Canal/Ditch | 5 | 1) Dam and Pump 2) Flume | UNT to Aquatic Life, Migratory Fish Spawning and Nursery | UNT to Anadromous Fish | February 15 to June 30 | 36.63614 | -76.86012 |
| 41.4 | ssuo111 | UNT to Blackwater River | Perennial | 5 | Flume | UNT to Aquatic Life, Migratory Fish Spawning and Nursery | UNT to Anadromous Fish | February 15 to June 30 | 36.64952 | -76.85748 |
| 41.6 | ssua071 | UNT to Blackwater River | Ephemeral | 3 | Dam and Pump | UNT to Aquatic Life, Migratory Fish Spawning and Nursery | UNT to Anadromous Fish | February 15 to June 30 | 36.65183 | -76.85941 |
| 42.3 | ssuo007 | UNT to Blackwater River | Perennial | 8 | Dam and Pump | UNT to Aquatic Life, Migratory Fish Spawning and Nursery | UNT to Anadromous Fish | February 15 to June 30 | 36.65901 | -76.85178 |
| 42.3 | ssuo006 | UNT to Blackwater River | Perennial | 5 | Dam and Pump | UNT to Aquatic Life, Migratory Fish Spawning and Nursery | UNT to Anadromous Fish | February 15 to June 30 | 36.65966 | -76.85187 |
| 42.7 | ssuo016 | UNT to Blackwater River | Intermittent | 7 | 1) Dam and Pump 2) Flume | UNT to Aquatic Life, Migratory Fish Spawning and Nursery | UNT to Anadromous Fish | February 15 to June 30 | 36.66476 | -76.85143 |
| 42.7 | ssuo017 | UNT to Blackwater River | Intermittent | Not Crossed by Centerline | Not Crossed by Centerline | UNT to Aquatic Life, Migratory Fish Spawning and Nursery | UNT to Anadromous Fish | February 15 to June 30 | 36.66457 | -76.85136 |

APPENDIX 4 (cont'd)

Waterbodies Crossed and Crossing Methods for the Atlantic Coast Pipeline Coastal Zone

| Mile post | Feature ID ^a | Waterbody Name | Flow Regime | Approximate Crossing Width (feet) ^b | Crossing Method | State Water Quality Classification | Fishery ^c | Time Restrictions ^d | Latitude | Longitude |
|-----------|--------------------------------|-----------------------|-------------|--|-----------------------------|------------------------------------|----------------------|--------------------------------|----------|-----------|
| 44.5 | ssup015 | UNT to Kingsale Swamp | Perennial | 5 | 1) Dam and Pump 2) Flume | Unclassified | Unclassified | - | 36.66792 | -76.82037 |
| 44.6 | ssuo010 | UNT to Kingsale Swamp | Perennial | Not Crossed by Centerline | Not Crossed by Centerline | Unclassified | Unclassified | - | 36.66742 | -76.81934 |
| 44.6 | ssuo010 | UNT to Kingsale Swamp | Perennial | 7 | 1) Flume 2) Dam and Pump | Unclassified | Unclassified | - | 36.66754 | -76.81857 |
| 44.6 | dsup008 | Ditch | Canal/Ditch | Not Crossed by Centerline | Not Crossed by Centerline | Unclassified | Unclassified | - | 36.66720 | -76.81874 |
| 44.6 | dsup007 | Ditch | Canal/Ditch | Not Crossed by Centerline | Not Crossed by Centerline | Unclassified | Unclassified | - | 36.66720 | -76.81863 |
| 45.1 | ssuo099 | UNT to Kingsale Swamp | Perennial | 11 | 1) Dam and Pump 2) Flume | Unclassified | Unclassified | - | 36.66816 | -76.80707 |
| 45.4 | dsuo004 | Ditch | Canal/Ditch | 11 | Dam and Pump | Unclassified | Unclassified | - | 36.66919 | -76.80403 |
| 45.5 | dsuo003 | Ditch | Canal/Ditch | 10 | Dam and Pump | Unclassified | Unclassified | - | 36.66913 | -76.80339 |
| 45.7 | dsua071 | UNT to Kingsale Swamp | Canal/Ditch | 8 | 1) Dam and Pump 2) Flume | Unclassified | Unclassified | - | 36.67058 | -76.79905 |
| 45.8 | dsua072 | UNT to Kingsale Swamp | Canal/Ditch | 6 | 1) Dam and Pump 2) Flume | Unclassified | Unclassified | - | 36.67035 | -76.79758 |
| 46.1 | ssur007 | UNT to Kingsale Swamp | Perennial | 4 | 1) Dam and Pump 2) Flume | Unclassified | Unclassified | - | 36.66807 | -76.79315 |
| 46.2 | dsua070 | UNT to Kingsale Swamp | Canal/Ditch | 5 | 1) Dam and Pump 2) Flume | Unclassified | Unclassified | - | 36.66721 | -76.79064 |
| 48.0 | dsuc050 | UNT to Jones Swamp | Canal/Ditch | 8 | 1) Dam and Pump 2) Flume | Unclassified | Unclassified | - | 36.67435 | -76.76204 |
| 48.5 | dsuc051 | UNT to Jones Swamp | Canal/Ditch | 5 | 1) Dam and Pump 2) Flume | Unclassified | Unclassified | - | 36.67531 | -76.75315 |
| 48.7 | dsuc052 | UNT to Jones Swamp | Canal/Ditch | 26 | 1) Dam and Pump 2) Flume | Unclassified | Unclassified | - | 36.67492 | -76.74995 |
| 49.2 | dsur007 | Ditch | Canal/Ditch | 4 | 1) Dam and Pump 2) Flume | Unclassified | Unclassified | - | 36.67849 | -76.74287 |
| 49.5 | Desktop feature within wetland | Quaker Swamp | Perennial | Desktop feature within wetland | Open Cut | Unclassified | Unclassified | - | 36.67975 | -76.73759 |
| 49.9 | ssuo015 | UNT to Quaker Swamp | Perennial | 3 | Flume | Unclassified | Unclassified | - | 36.68277 | -76.73264 |

APPENDIX 4 (cont'd)

Waterbodies Crossed and Crossing Methods for the Atlantic Coast Pipeline Coastal Zone

| Mile post | Feature ID ^a | Waterbody Name | Flow Regime | Approximate Crossing Width (feet) ^b | Crossing Method | State Water Quality Classification | Fishery ^c | Time Restrictions ^d | Latitude | Longitude |
|-----------|--------------------------------|---------------------|--------------|--|-----------------------------|------------------------------------|----------------------|--------------------------------|----------|-----------|
| 50.2 | Desktop feature within wetland | Quaker Swamp | Perennial | Desktop feature within wetland | Open Cut | Unclassified | Unclassified | - | 36.68765 | -76.73168 |
| 50.5 | ssuo014 | UNT to Quaker Swamp | Perennial | 2 | Flume | Unclassified | Unclassified | - | 36.69187 | -76.73495 |
| 51.7 | dsuo010 | Ditch | Canal/Ditch | 8 | Flume | Unclassified | Unclassified | - | 36.70558 | -76.72782 |
| 52.1 | ssup036 | UNT to Quaker Swamp | Intermittent | 3 | Flume | Unclassified | Unclassified | - | 36.71034 | -76.72372 |
| 52.1 | ssup027 | UNT to Quaker Swamp | Perennial | 6 | Flume | Unclassified | Unclassified | - | 36.71102 | -76.72291 |
| 52.2 | ssup035 | UNT to Quaker Swamp | Intermittent | Not Crossed by Centerline | Not Crossed by Centerline | Unclassified | Unclassified | - | 36.71161 | -76.72103 |
| 52.6 | ssup032 | UNT to Quaker Swamp | Intermittent | 3 | Flume | Unclassified | Unclassified | - | 36.71403 | -76.71603 |
| 52.6 | ssup031 | UNT to Quaker Swamp | Intermittent | 2 | Flume | Unclassified | Unclassified | - | 36.71434 | -76.71570 |
| 53.9 | ssuo024 | UNT to Speights Run | Intermittent | Not Crossed by Centerline | Not Crossed by Centerline | Unclassified | Unclassified | - | 36.72906 | -76.70412 |
| 53.9 | ssuo025 | UNT to Speights Run | Intermittent | 4 | 1) Dam and Pump 2) Flume | Unclassified | Unclassified | - | 36.72948 | -76.70445 |
| 53.9 | ssuo026 | UNT to Speights Run | Intermittent | 3 | 1) Dam and Pump 2) Flume | Unclassified | Unclassified | - | 36.72959 | -76.70445 |
| 54.6 | ssur008 | UNT to Cohoon Creek | Perennial | 4 | 1) Dam and Pump 2) Flume | Unclassified | Unclassified | - | 36.73891 | -76.69833 |
| 55.3 | ssuo118 | UNT to Lake Cohoon | Perennial | 3 | 1) Flume 2) Dam and Pump | Unclassified | Unclassified | - | 36.74812 | -76.69110 |
| 55.4 | ssuo117 | UNT to Lake Cohoon | Perennial | 9 | 1) Flume 2) Dam and Pump | Unclassified | Unclassified | - | 36.74802 | -76.69116 |
| 55.5 | dsup010 | Ditch | Canal/Ditch | 2 | 1) Dam and Pump 2) Flume | Unclassified | Unclassified | - | 36.75010 | -76.68989 |
| 56.1 | Desktop feature within wetland | Cohoon Creek | Perennial | Desktop feature within wetland | Open Cut | Unclassified | Unclassified | - | 36.75875 | -76.68726 |
| 56.2 | ssup019 | UNT to Cohoon Creek | Perennial | 15 | 1) Dam and Pump 2) Flume | Unclassified | Unclassified | - | 36.75942 | -76.68663 |
| 56.3 | ssup023 | UNT to Cohoon Creek | Intermittent | Not Crossed by Centerline | Not Crossed by Centerline | Unclassified | Unclassified | - | 36.76111 | -76.68621 |

APPENDIX 4 (cont'd)

Waterbodies Crossed and Crossing Methods for the Atlantic Coast Pipeline Coastal Zone

| Mile post | Feature ID ^a | Waterbody Name | Flow Regime | Approximate Crossing Width (feet) ^b | Crossing Method | State Water Quality Classification | Fishery ^c | Time Restrictions ^d | Latitude | Longitude |
|-----------|-------------------------|---------------------------------|--------------|--|-----------------------------|------------------------------------|----------------------------|--------------------------------|-----------|------------|
| 56.3 | ssup023 | UNT to Cohoon Creek | Intermittent | 1 | 1) Dam and Pump 2) Flume | Unclassified | Unclassified | - | 36.76111 | -76.68621 |
| 56.3 | ssup022 | UNT to Cohoon Creek | Intermittent | Not Crossed by Centerline | Not Crossed by Centerline | Unclassified | Unclassified | - | 36.76123 | -76.68592 |
| 56.4 | ssup024 | UNT to Cohoon Creek | Perennial | 10 | 1) Dam and Pump 2) Flume | Unclassified | Unclassified | - | 36.76251 | -76.68504 |
| 56.7 | ssup026 | UNT to Cohoon Creek | Intermittent | 2 | 1) Dam and Pump 2) Flume | Unclassified | Unclassified | - | 36.76455 | -76.68228 |
| 56.7 | nhd_va_c_042 | Unnamed Pond | Pond | Pond | Pond | N/A | N/A | - | 36.76530 | -76.68073 |
| 57.0 | ssup033 | UNT to Eley Swamp | Intermittent | 2 | Flume | Unclassified | Unclassified | - | 36.76738 | -76.67775 |
| 58.0 | ssuo105 | UNT to Eley Swamp | Perennial | 9 | 1) Dam and Pump 2) Flume | Unclassified | Unclassified | - | 36.77728 | -76.66494 |
| 58.1 | ssuo106 | UNT to Eloy Swamp | Perennial | 4 | 1) Dam and Pump 2) Flume | Unclassified | Unclassified | - | 36.77839 | -76.66316 |
| 58.8 | dsup009 | Ditch | Canal/Ditch | Not Crossed by Centerline | Perm AR | Unclassified | Unclassified | - | 36.786298 | -76.655268 |
| 59.3 | ssuo107 | UNT to Lake Prince | Perennial | 3 | 1) Dam and Pump 2) Flume | UNT to Public Fishing Lake | Unclassified | - | 36.79022 | -76.64918 |
| 59.4 | ssuo109 | UNT to Lake Prince | Perennial | 5 | 1) Dam and Pump 2) Flume | UNT to Public Fishing Lake | Unclassified | - | 36.79042 | -76.64784 |
| 59.4 | ssuo110 | UNT to Lake Prince | Intermittent | 13 | 1) Dam and Pump 2) Flume | UNT to Public Fishing Lake | Unclassified | - | 36.79029 | -76.64764 |
| 60.5 | ssuo011 | UNT to Lake Prince | Perennial | 2 | Flume | UNT to Public Fishing Lake | Unclassified | - | 36.79395 | -76.62954 |
| 60.9 | ssuo013 | UNT to Lake Prince | Intermittent | Not Crossed by Centerline | Not Crossed by Centerline | UNT to Public Fishing Lake | Unclassified | - | 36.79411 | -76.62169 |
| 61.0 | osur001 | Lake Prince | Reservoir | 388 | HDD | Public Fishing Lake | Public Fishing Lake | - | 36.79439 | -76.62156 |
| 61.1 | ssur002 | UNT to Lake Prince | Ephemeral | 3 | HDD | UNT to Public Fishing Lake | UNT to Public Fishing Lake | - | 36.79501 | -76.61848 |
| 61.6 | ssuo103 | UNT to Western Branch Reservoir | Intermittent | Not Crossed By Centerline | Not Crossed By Centerline | UNT to Public Fishing Lake | UNT to Public Fishing Lake | - | 36.79693 | -76.60987 |
| 61.7 | ssuo102 | UNT to Western Branch Reservoir | Perennial | 9 | 1) Dam and Pump 2) Flume | UNT to Public Fishing Lake | UNT to Public Fishing Lake | - | 36.79681 | -76.60965 |
| 61.8 | ssuo101 | UNT to Western Branch Reservoir | Perennial | 3 | 1) Dam and Pump 2) Flume | UNT to Public Fishing Lake | UNT to Public Fishing Lake | - | 36.79688 | -76.60751 |

APPENDIX 4 (cont'd)

Waterbodies Crossed and Crossing Methods for the Atlantic Coast Pipeline Coastal Zone

| Mile post | Feature ID ^a | Waterbody Name | Flow Regime | Approximate Crossing Width (feet) ^b | Crossing Method | State Water Quality Classification | Fishery ^c | Time Restrictions ^d | Latitude | Longitude |
|-----------|---------------------------|---------------------------------|--------------|--|---------------------------|--|-----------------------------|--------------------------------|----------|-----------|
| 61.8 | ssuo100 | UNT to Western Branch Reservoir | Perennial | Not Crossed By Centerline | Not Crossed by Centerline | UNT to Public Fishing Lake | UNT to Public Fishing Lake | - | 36.79695 | -76.60656 |
| 62.4 | osua400 | Western Branch Reservoir | Reservoir | 302 | HDD | Public Fishing Lake | Public Fishing Lake | - | 36.79625 | -76.59632 |
| 62.7 | ssuo114 | UNT to Western Branch Reservoir | Perennial | 3 | Dam and Pump | UNT to Public Fishing Lake | UNT to Public Fishing Lake | - | 36.79369 | -76.59233 |
| 63.0 | ssuo116 | UNT to Western Branch Reservoir | Perennial | 2 | Dam and Pump | UNT to Public Fishing Lake | UNT to Public Fishing Lake | - | 36.79278 | -76.58829 |
| 63.0 | ssuo115 | UNT to Western Branch Reservoir | Perennial | 5 | Dam and Pump | UNT to Public Fishing Lake | UNT to Public Fishing Lake | - | 36.79276 | -76.58822 |
| 63.6 | ssup013 ^e | Western Branch Nansemond River | Perennial | 60 | HDD | Aquatic Life, Migratory fish Spawning and Nursery | Anadromous Fish, EFH | February 15 to June 30 | 36.79216 | -76.57719 |
| 63.6 | nhd_va_c_047 ^e | Western Branch Nansemond River | Perennial | 143 | HDD | Aquatic Life, Migratory Fish Spawning and Nursery | Anadromous Fish, EFH | February 15 to June 30 | 36.79224 | -76.57681 |
| 64.4 | nhd_va_c_048 ^e | Nansemond River | Perennial | 460 | HDD | Aquatic Life, Migratory Fish Spawning and Nursery | Anadromous Fish, EFH | February 15 to June 30 | 36.79482 | -76.56311 |
| 65.5 | dsuc100 | UNT to Nansemond River | Canal/Ditch | Not Crossed By Centerline | Not Crossed by Centerline | UNT to Aquatic Life, Migratory Fish Spawning and Nursery | UNT to Anadromous Fish, EFH | - | 36.79286 | -76.54296 |
| 65.9 | nhd_va_c_007 | UNT to Unnamed Reservoir | Intermittent | 7 | Dam and Pump | Unclassified | Unclassified | - | 36.79089 | -76.53680 |
| 66.0 | nhd_va_m_001 | UNT to Unnamed Reservoir | Canal/Ditch | Not Crossed By Centerline | Perm AR | Unclassified | Unclassified | - | 36.79216 | -76.57717 |
| 66.3 | ssus004 | UNT to Great Dismal Swamp | Intermittent | Not Crossed By Centerline | Temp AR | Unclassified | Unclassified | - | 36.78651 | -76.53239 |
| 66.3 | ssus003 | UNT to Great Dismal Swamp | Intermittent | Not Crossed By Centerline | Temp AR | Unclassified | Unclassified | - | 36.78660 | -76.53199 |
| 66.3 | ssus002 | UNT to Great Dismal Swamp | Intermittent | Not Crossed By Centerline | Temp AR | Unclassified | Unclassified | - | 36.78678 | -76.53170 |
| 66.3 | ssus003 | UNT to Great Dismal Swamp | Intermittent | Not Crossed By Centerline | Temp AR | Unclassified | Unclassified | - | 36.78673 | -76.53168 |
| 66.9 | ssuo019 | UNT to Great Dismal Swamp | Perennial | 9 | Flume | Unclassified | Unclassified | - | 36.78423 | -76.52075 |
| 67.0 | ssuo020 | UNT to Great Dismal Swamp | Perennial | 5 | Flume | Unclassified | Unclassified | - | 36.78411 | -76.52067 |
| 67.6 | ssup028 | UNT to Great Dismal Swamp | Perennial | 24 | Flume | Unclassified | Unclassified | - | 36.77765 | -76.51416 |

APPENDIX 4 (cont'd)

Waterbodies Crossed and Crossing Methods for the Atlantic Coast Pipeline Coastal Zone

| Mile post | Feature ID ^a | Waterbody Name | Flow Regime | Approximate Crossing Width (feet) ^b | Crossing Method | State Water Quality Classification | Fishery ^c | Time Restrictions ^d | Latitude | Longitude |
|-----------|-------------------------|---------------------------|--------------|--|-----------------------------|------------------------------------|----------------------|--------------------------------|-----------|-----------|
| 68.0 | ssup029 | UNT to Great Dismal Swamp | Perennial | 25 | Flume | Unclassified | Unclassified | - | 36.77106 | -76.51066 |
| 68.5 | ssuo021 | UNT to Great Dismal Swamp | Intermittent | 6 | Flume | Unclassified | Unclassified | - | 36.76360 | -76.50718 |
| 68.5 | osup002 | UNT to Great Dismal Swamp | Pond | Not Crossed By Centerline | Pond | Unclassified | N/A | - | 36.76448 | -76.50720 |
| 69.6 | ssup038 | UNT to Great Dismal Swamp | Perennial | 24 | Flume | Unclassified | Unclassified | - | 36.76347 | -76.49266 |
| 70.2 | ssup037 | UNT to Great Dismal Swamp | Intermittent | 18 | Flume | Unclassified | Unclassified | - | 36.76729 | -76.48232 |
| 70.5 | nhd_va_o_002 | UNT to East Ditch | Canal/Ditch | 5 | Flume | Unclassified | Unclassified | - | 36.77486 | -76.47436 |
| 71.2 | nhd_va_o_003 | UNT to Great Dismal Swamp | Canal/Ditch | Not Crossed By Centerline | Not Crossed By Centerline | Unclassified | Unclassified | - | 36.77019 | -76.46627 |
| 71.2 | ssur006 | UNT to Great Dismal Swamp | Perennial | 15 | 1) Dam and Pump 2) Flume | Unclassified | Unclassified | - | 36.77093 | -76.46373 |
| 71.2 | nhd_va_418 | Ditch | Canal/Ditch | 5 | 1) Flume 2) Dam and Pump | Unclassified | Unclassified | - | 36.76996 | -76.46553 |
| 71.3 | nhd_va_416 | Ditch | Canal/Ditch | 5 | 1) Flume 2) Dam and Pump | Unclassified | Unclassified | - | 36.76968 | -76.46527 |
| 71.4 | nhd_va_409 | East Ditch | Perennial | Not Crossed By Centerline | Not Crossed By Centerline | Unclassified | Unclassified | - | 36.76869 | -76.46372 |
| 71.4 | nhd_va_409 | East Ditch | Canal/Ditch | Not Crossed By Centerline | Not Crossed By Centerline | Unclassified | Unclassified | - | 36.76869 | -76.46372 |
| 71.4 | schr009 | East Ditch | Perennial | Not Crossed By Centerline | Not Crossed By Centerline | Unclassified | Unclassified | - | 36.76863 | -76.46326 |
| 71.6 | schr010 | UNT to East Ditch | Perennial | 5 | Flume | Unclassified | Unclassified | - | 36.76909 | -76.46036 |
| 71.6 | schr009 | East Ditch | Perennial | 31 | 1) Flume 2) Dam and Pump | Unclassified | Unclassified | - | 36.768755 | -76.46022 |
| 71.7 | schr011 | UNT to East Ditch | Perennial | 3 | Flume | Unclassified | Unclassified | - | 36.76906 | -76.45889 |
| 71.8 | schr013 | UNT to East Ditch | Perennial | 5 | Flume | Unclassified | Unclassified | - | 36.76892 | -76.45733 |
| 73.6 | schr006 | UNT to Great Dismal Swamp | Perennial | 13 | Flume | Unclassified | Unclassified | - | 36.76328 | -76.42732 |
| 73.7 | schr005 | UNT to Great Dismal Swamp | Intermittent | 9 | Flume | Unclassified | Unclassified | - | 36.76285 | -76.42672 |
| 73.9 | schr004 | UNT to Great Dismal Swamp | Perennial | 17 | Flume | Unclassified | Unclassified | - | 36.76027 | -76.42295 |
| 74.1 | dchc001 | UNT to Great Dismal Swamp | Canal/Ditch | Not Crossed by Centerline | Temp AR | Unclassified | Unclassified | - | 36.76072 | -76.41912 |

APPENDIX 4 (cont'd)

Waterbodies Crossed and Crossing Methods for the Atlantic Coast Pipeline Coastal Zone

| Mile post | Feature ID ^a | Waterbody Name | Flow Regime | Approximate Crossing Width (feet) ^b | Crossing Method | State Water Quality Classification | Fishery ^c | Time Restrictions ^d | Latitude | Longitude |
|-----------|-------------------------|---------------------------|--------------|--|-----------------------------|------------------------------------|----------------------|--------------------------------|----------|-----------|
| 74.1 | dchc002 | UNT to Great Dismal Swamp | Canal/Ditch | Not Crossed by Centerline | Temp AR | Unclassified | Unclassified | - | 36.76090 | -76.41862 |
| 74.2 | dchc002 | UNT to Great Dismal Swamp | Canal/Ditch | Not Crossed by Centerline | Temp AR | Unclassified | Unclassified | - | 36.76126 | -76.41621 |
| 74.3 | dchc002 | UNT to Great Dismal Swamp | Canal/Ditch | Not Crossed by Centerline | Temp AR | Unclassified | Unclassified | - | 36.76163 | -76.41365 |
| 74.3 | schr003 | UNT to Great Dismal Swamp | Perennial | 15 | Flume | Unclassified | Unclassified | - | 36.75681 | -76.41788 |
| 74.8 | dchc002 | UNT to Great Dismal Swamp | Canal/Ditch | Not Crossed by Centerline | Temp AR | Unclassified | Unclassified | - | 36.76488 | -76.41203 |
| 74.9 | dchc002 | UNT to Great Dismal Swamp | Canal/Ditch | Not Crossed by Centerline | Temp AR | Unclassified | Unclassified | - | 36.76230 | -76.40926 |
| 75.0 | dchc002 | UNT to Great Dismal Swamp | Canal/Ditch | Not Crossed by Centerline | Perm AR | Unclassified | Unclassified | - | 36.76264 | -76.40712 |
| 75.0 | schr001 | UNT to Great Dismal Swamp | Perennial | 44 | Flume | Unclassified | Unclassified | - | 36.75694 | -76.40567 |
| 75.1 | dchr001 | UNT to Great Dismal Swamp | Canal/Ditch | Not Crossed by Centerline | Perm AR | Unclassified | Unclassified | - | 36.76266 | -76.40700 |
| 75.1 | dchc003 | UNT to Great Dismal Swamp | Canal/Ditch | Not Crossed by Centerline | Perm AR | Unclassified | Unclassified | - | 36.76618 | -76.40801 |
| 76.0 | schp002 | UNT to Great Dismal Swamp | Intermittent | 34 | Flume | Unclassified | Unclassified | - | 36.75989 | -76.38889 |
| 76.9 | scho003 | UNT to Deep Creek | Intermittent | Not Crossed by Centerline | Not Crossed by Centerline | Unclassified | Unclassified | - | 36.76171 | -76.37386 |
| 77.4 | scho001 | Deep Creek | Perennial | 32 | Dam and Pump | Unclassified | Unclassified | - | 36.76234 | -76.36582 |
| 77.4 | scho002 | UNT to Deep Creek | Perennial | 6 | Dam and Pump | Unclassified | Unclassified | - | 36.76229 | -76.36497 |
| 77.4 | scho013 | UNT to Deep Creek | Intermittent | 3 | Flume | Unclassified | Unclassified | - | 36.76172 | -76.36414 |
| 77.5 | dcho013 | UNT to Deep Creek | Canal/Ditch | Not Crossed By Centerline | Not Crossed by Centerline | Unclassified | Unclassified | - | 36.76094 | -76.36338 |
| 77.8 | nhd_va_419 | Ditch | Canal/Ditch | 5 | HDD | Unclassified | Unclassified | - | 36.76128 | -76.35865 |
| 78.3 | nhd_va_286 | UNT to Deep Creek | Canal/Ditch | Not Crossed by Centerline | Perm AR | Unclassified | Unclassified | - | 36.76370 | -76.35030 |
| 78.3 | scho014 | UNT to Deep Creek | Intermittent | 42 | 1) Dam and Pump 2) Flume | Unclassified | Unclassified | - | 36.76286 | -76.34960 |
| 78.8 | scho005 | Ditch | Perennial | 20 | HDD | Unclassified | Unclassified | - | 36.76405 | -76.34246 |
| 78.8 | ocho001 | Unnamed Pond | Pond | Pond | HDD | NA | NA | - | 36.76432 | -76.34212 |
| 78.9 | ocho001 | Unnamed Pond | Pond | Pond | HDD | NA | NA | - | 36.76454 | -76.34082 |

APPENDIX 4 (cont'd)

Waterbodies Crossed and Crossing Methods for the Atlantic Coast Pipeline Coastal Zone

| Mile post | Feature ID ^a | Waterbody Name | Flow Regime | Approximate Crossing Width (feet) ^b | Crossing Method | State Water Quality Classification | Fishery ^c | Time Restrictions ^d | Latitude | Longitude |
|-----------|-------------------------|--|--------------|--|---------------------------|--|-----------------------------|--------------------------------|-----------|------------|
| 79.0 | dcho006 | Ditch | Canal/Ditch | 7 | HDD | Unclassified | Unclassified | - | 36.76474 | -76.33940 |
| 79.0 | ocho002 | Unnamed Pond | Pond | Pond | Pond | NA | NA | - | 36.76498 | -76.33811 |
| 79.7 | ocho003 | Unnamed Pond | Pond | Pond | Pond | NA | NA | - | 36.764937 | -76.326358 |
| 81.0 | scho012 | UNT to Deep Creek | Ephemeral | 3 | Flume | Unclassified | Unclassified | - | 36.76987 | -76.30779 |
| 81.2 | ocho005 | Unnamed Pond | Pond | Pond | Pond | NA | NA | - | 36.77209 | -76.30741 |
| 81.6 | ocho004 | Unnamed Pond | Pond | Pond | Pond | NA | NA | - | 36.77357 | -76.30037 |
| 81.8 | schp001 ^e | Southern Branch Elizabeth River | Perennial | 835 | HDD | Aquatic Life, Migratory Fish Spawning and Nursery | Anadromous Fish, EFH | February 1 to June 30 | 36.77445 | -76.29542 |
| 82.1 | schp004 | UNT to Southern Branch Elizabeth River | Intermittent | 17 | HDD | UNT to Aquatic Life, Migratory Fish Spawning and Nursery | UNT to Anadromous Fish, EFH | February 1 to June 30 | 36.77507 | -76.29114 |
| 82.1 | dchp004 | Ditch | Canal/Ditch | Not Crossed by Centerline | Not Crossed by Centerline | Unclassified | Unclassified | - | 36.77506 | -76.29140 |
| 82.3 | dchr008 | Ditch | Canal/Ditch | 6 | Flume | Unclassified | Unclassified | - | 36.77508 | -76.28892 |
| 82.4 | schr007e | UNT to Great Dismal Swamp | Canal/Ditch | Not Crossed by Centerline | Not Crossed by Centerline | Unclassified | Unclassified | - | 36.77487 | -76.28689 |
| 82.4 | schr007p | UNT to Great Dismal Swamp | Perennial | 5 | Flume | Unclassified | Unclassified | - | 36.77502 | -76.28644 |
| 82.5 | dchb001 | UNT to Newton Creek | Canal/Ditch | Not Crossed by Centerline | Not Crossed by Centerline | Unclassified | Unclassified | - | 36.77483 | -76.28497 |
| 82.5 | dchb001 | UNT to Newton Creek | Canal/Ditch | Not Crossed by Centerline | Not Crossed by Centerline | Unclassified | Unclassified | - | 36.77487 | -76.28382 |
| 82.5 | dchb001 | UNT to Newton Creek | Canal/Ditch | Not Crossed by Centerline | Not Crossed by Centerline | Unclassified | Unclassified | - | 36.77488 | -76.28349 |

4-8

^a Waterbodies with a Feature ID starting with “nhd” represent waterbodies that are based on desktop data from the National Hydrography Dataset, and widths have been assumed as 10 feet wide for perennial and 5 feet wide for intermittent waterbodies in this dataset. Features noted as Desktop (within wetland) are waterbodies that occur within large wetlands that were added to document the crossing of a waterbody where survey was not able to reach the edge of the waterbody due to water levels. There are no field data sheets for the nhd or Desktop features included in Appendix 6. In addition, features a Feature ID starting with “d” do not have datasheets in Appendix 6 but there are photos of the majority of these ditch/canal features.

^b “Not Crossed by Centerline” for Approximate Crossing Width indicates that the proposed route centerline does not cross the waterbody.

^c Fisheries types are based on readily available data from agency consultation letters or online data.

^d Timing restrictions are based on readily available data from agency consultation letters or online data.

^e Tidal waterbody verified with VMRC.

Desktop feature within wetland = these three features were included as waterbodies in the table to recognize that Quaker Swamp and Cohoon Creek were not omitted from the data, but are encompassed by large wetlands and survey crews were unable to reach the bank of these two features. Adding these to the table recognizes the presence of the feature and approximate milepost location.