

**ATLANTIC COAST PIPELINE, LLC
ATLANTIC COAST PIPELINE**

and

**DOMINION ENERGY TRANSMISSION, INC.
SUPPLY HEADER PROJECT**

**Supplemental Filing
December 1, 2017**

APPENDIX B

Haul Plan



ATLANTIC COAST PIPELINE, LLC
ATLANTIC COAST PIPELINE
Docket No. CP15-554-000
CP15-554-001

Haul Plan

Supplement to Traffic and Transportation Management Plan

Rev. 0

Prepared by



November 2017

TABLE OF CONTENTS

1.0 INTRODUCTION.....1
2.0 PURPOSE1
3.0 MAPS OF ACCESS ROADS.....1
**4.0 TRANSPORTATION OF EQUIPMENT, MATERIALS, AND PERSONNEL
ALONG PUBLIC ROADS IN STEEP TERRAIN1**

LIST OF ACRONYMS AND ABBREVIATIONS

ACP	Atlantic Coast Pipeline
Atlantic	Atlantic Coast Pipeline, LLC
FERC	Federal Energy Regulatory Commission

1.0 INTRODUCTION

Atlantic Coast Pipeline, LLC (Atlantic) – a company formed by four major energy companies – Dominion Resources, Inc.; Duke Energy Corporation; Piedmont Natural Gas Co., Inc.; and Southern Company Gas – proposes to construct and operate approximately 600 miles of natural gas transmission pipelines and associated aboveground facilities in West Virginia, Virginia, and North Carolina. This Project, referred to as the Atlantic Coast Pipeline (ACP), will deliver up to 1.5 million dekatherms per day of natural gas from supply areas in the Appalachian region to demand areas in Virginia and North Carolina. Atlantic has contracted with Dominion Energy Transmission, Inc., a subsidiary of Dominion Resources, Inc., to construct and operate the ACP on behalf of Atlantic.

2.0 PURPOSE

In July, 2016 Atlantic filed an update to its *Traffic and Transportation Management Plan* with the Federal Energy Regulatory Commission (FERC) (FERC Accession Number 20160718-5164). FERC’s final Environmental Impact Statement recommended that this plan be supplemented with a *Haul Plan* to address transportation of equipment, materials, and personnel along narrow public roads in steep terrain. FERC’s Certificate Order Condition No. 41 requires that Atlantic file a copy of its *Haul Plan* as part of the Atlantic’s Implementation Plan. The *Haul Plan* is being submitted in compliance with that requirement.

3.0 MAPS OF ACCESS ROADS

Attachment A to the *Haul Plan* consists of maps showing all the roads that will be used during construction.

4.0 TRANSPORTATION OF EQUIPMENT, MATERIALS, AND PERSONNEL ALONG PUBLIC ROADS IN STEEP TERRAIN

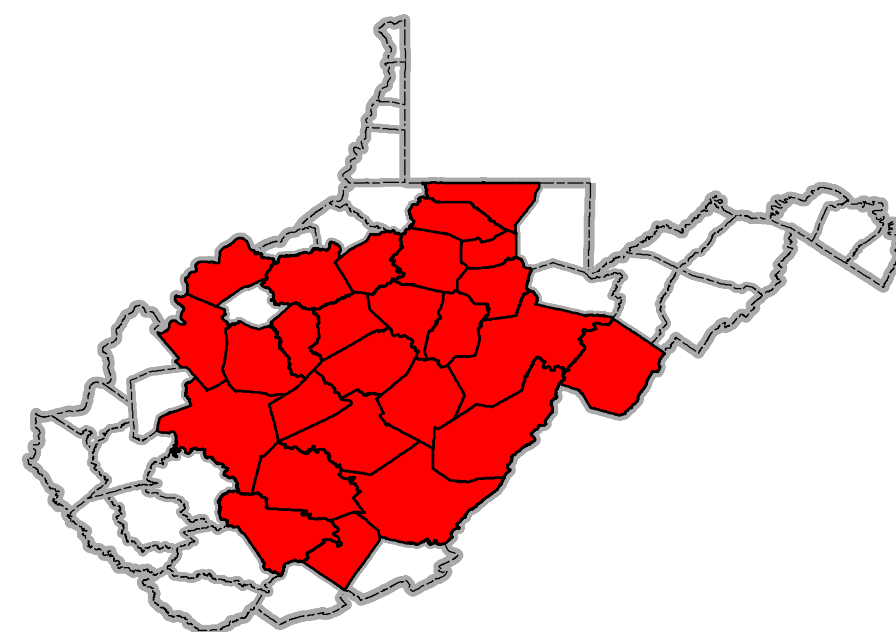
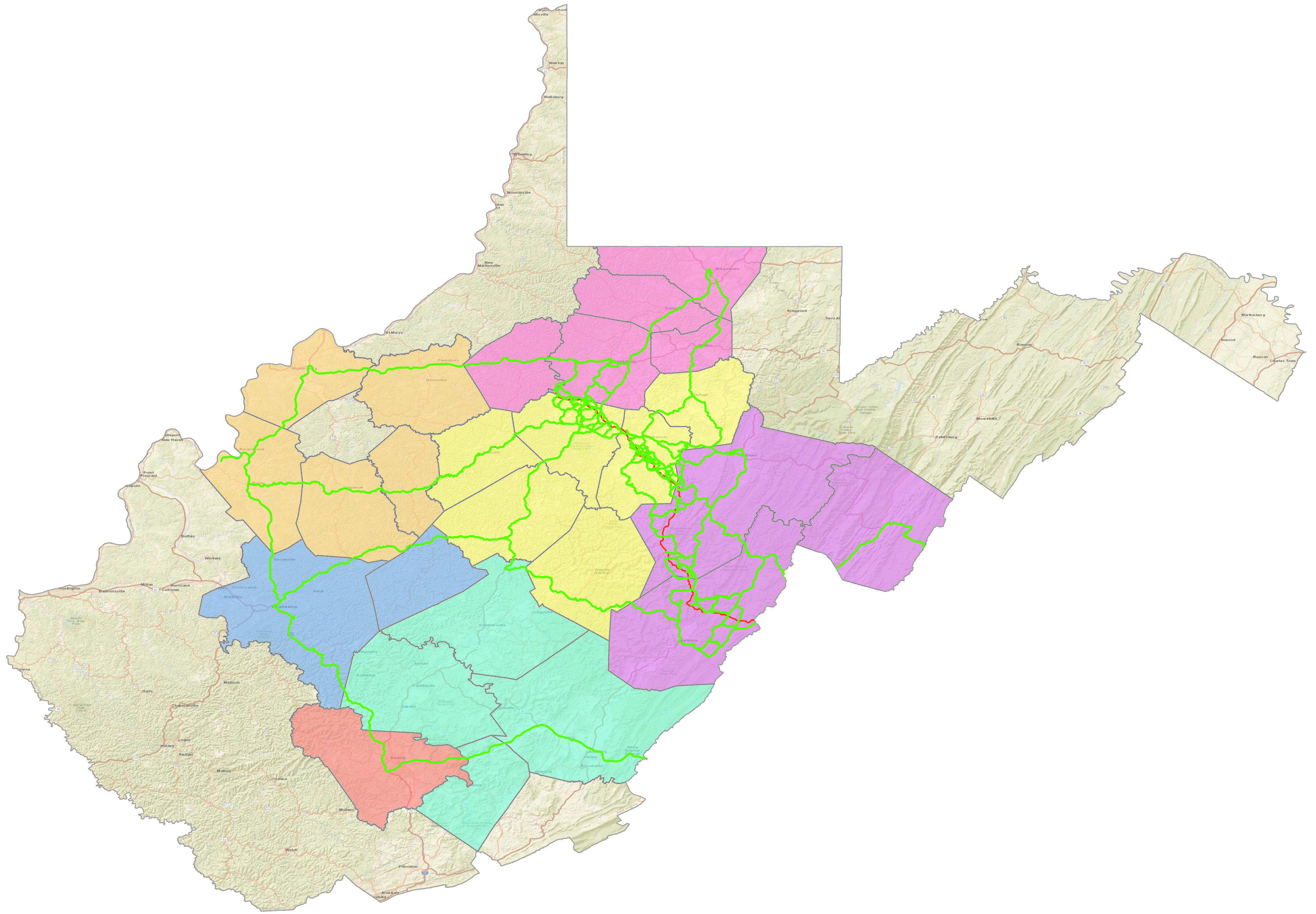
For narrow public roads in steep terrain, Atlantic will employ pilot cars, flaggers, and temporary lane closures in accordance with:

- West Virginia Division of Highway’s Manual on Temporary Traffic Control for Streets and Highways;
- Virginia Work Area Protection Manual;
- Virginia Supplement to the Manual on Uniform Traffic Control Devices;
- North Carolina Department of Transportation Maintenance/Utility Traffic Control Guidelines;
- North Carolina supplement to the Manual on Uniform Traffic Control Devices;
- Requirements of the Monongahela National Forest, George Washington National Forest, and Seneca State Forest, as necessary, to mitigate potential impacts on roads and/or implement a traffic and transportation procedure; and

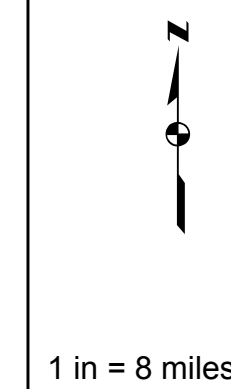
- Other applicable local, state, and federal laws and regulations.

Attachment 1

Haul Plan Maps



REFERENCE:
 ESRI WORLD STREET MAP, ESRI, HERE, DELORME, USGS, INTERMAP,
 INCREMENT P, NRCAN, ESRI JAPAN, METI, ESRI CHINA (HONG KONG), ESRI
 KOREA, ESRI (THAILAND), MAPMYINDIA, NGCC, © OPENSTREETMAP
 CONTRIBUTORS, AND THE GIS USER COMMUNITY, ACCESSED 11/2017.



LEGEND

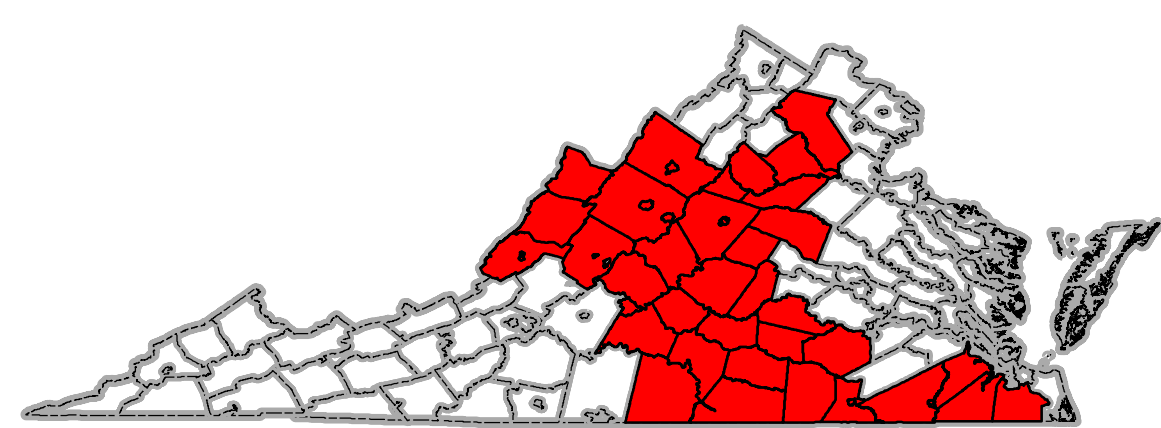
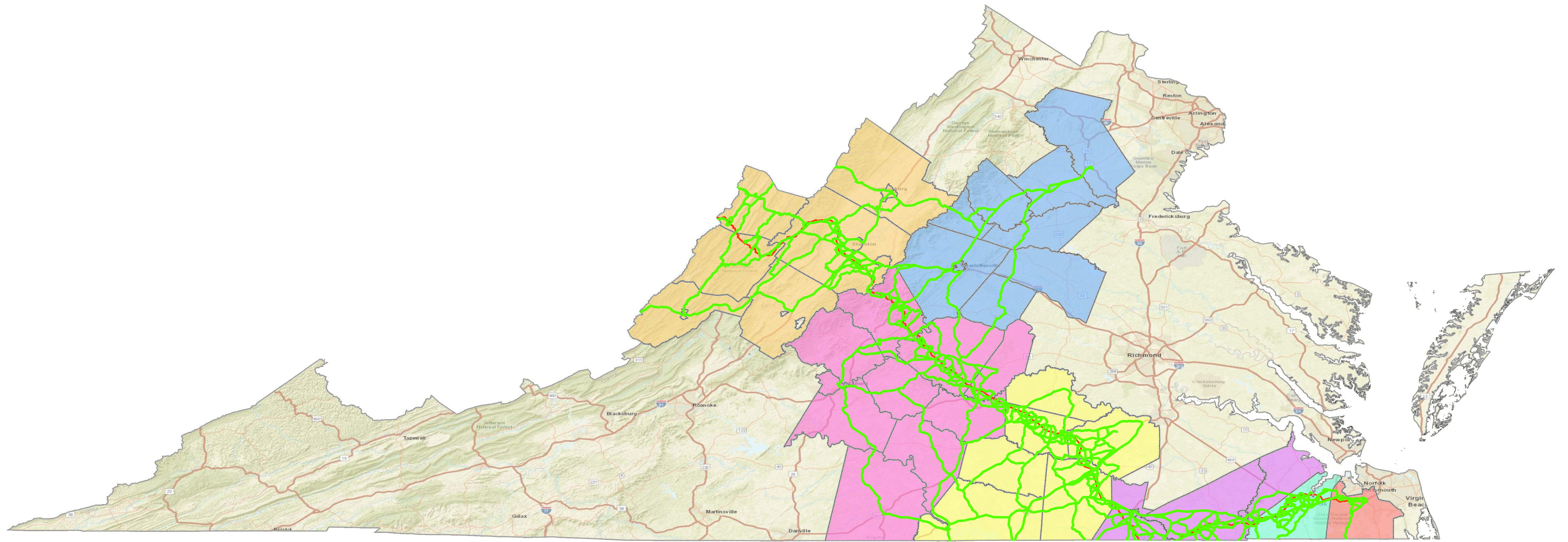
- Proposed Haul Route
 - Pipeline
 - County Boundary
 - State Boundary
- WVDOT District**
- District 1
 - District 3
 - District 4
 - District 7
 - District 8
 - District 9
 - District 10



**Proposed Heavy Haul Route Locations
 West Virginia Overview**

DRAWN BY: LCJ
 CHECKED: MDO

DATE: 11/29/2017
 APPROVED: DRS



REFERENCE:
 ESRI WORLD STREET MAP, ESRI, HERE, DELORME, USGS, INTERMAP,
 INCREMENT P, NRCAN, ESRI JAPAN, METI, ESRI CHINA (HONG KONG), ESRI
 KOREA, ESRI (THAILAND), MAPMYINDIA, NGCC, © OPENSTREETMAP
 CONTRIBUTORS, AND THE GIS USER COMMUNITY, ACCESSED 11/2017.

1 in = 13 miles

LEGEND

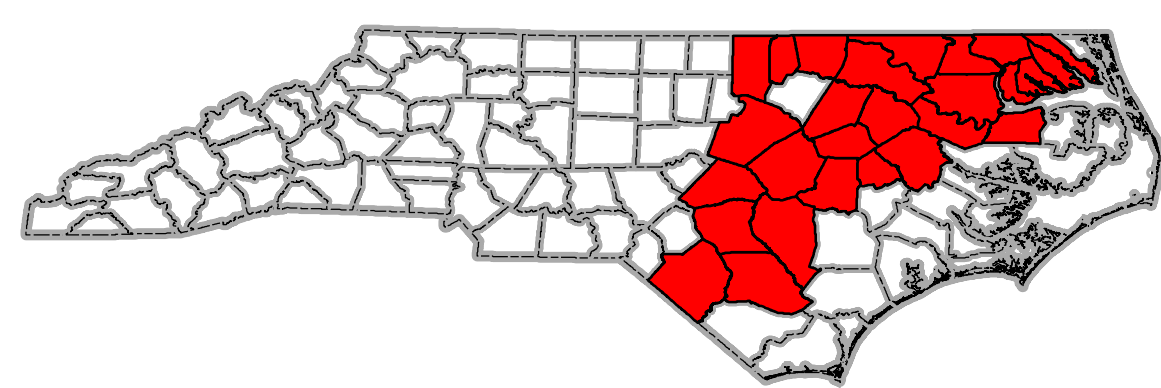
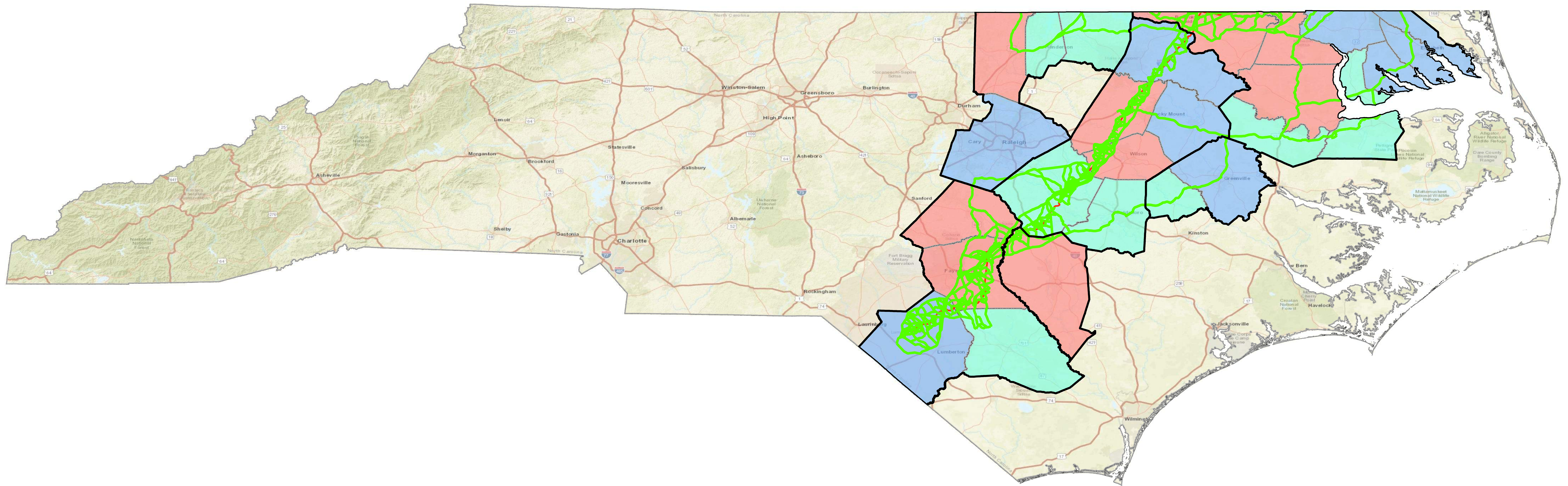
- Proposed Haul Route
- Pipeline
- County Boundary
- State Boundary
- VDOT District**
- Culpeper District
- Hampton Roads District
- Lynchburg District
- Richmond District
- Staunton District
- City of Chesapeake
- City of Suffolk



**Proposed Heavy Haul Route Locations
 Virginia Overview**

DRAWN BY: LCJ
 CHECKED: MDO

DATE: 11/22/2017
 APPROVED: DRS



REFERENCE:
 ESRI WORLD STREET MAP, ESRI, HERE, DELORME, USGS, INTERMAP,
 INCREMENT P, NRCAN, ESRI JAPAN, METI, ESRI CHINA (HONG KONG), ESRI
 KOREA, ESRI (THAILAND), MAPMYINDIA, NGCC, © OPENSTREETMAP
 CONTRIBUTORS, AND THE GIS USER COMMUNITY, ACCESSED 11/2017.



1 in = 14 miles

LEGEND

- Proposed Haul Route
- Pipeline

NCDOT District

- District 1
- District 2
- District 3

- County Boundary
- State Boundary



**Proposed Heavy Haul Route Locations
 North Carolina Overview**

DRAWN BY: LCJ
 CHECKED: MDO

DATE: 11/22/2017
 APPROVED: DRS