

**ATLANTIC COAST PIPELINE, LLC
ATLANTIC COAST PIPELINE**

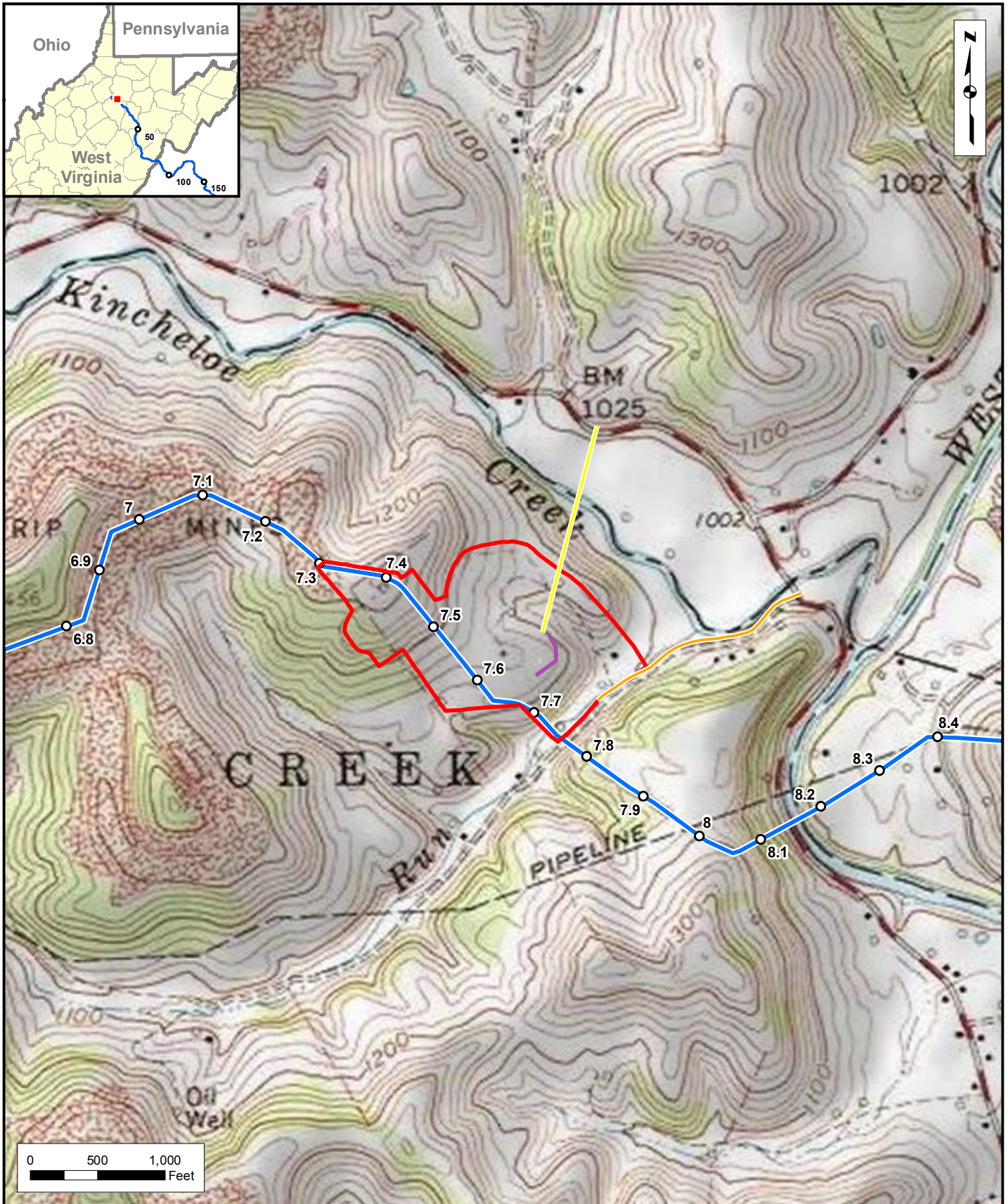
and

**DOMINION TRANSMISSION, INC.
SUPPLY HEADER PROJECT**

**Supplemental Filing
January 10, 2017**

APPENDIX A

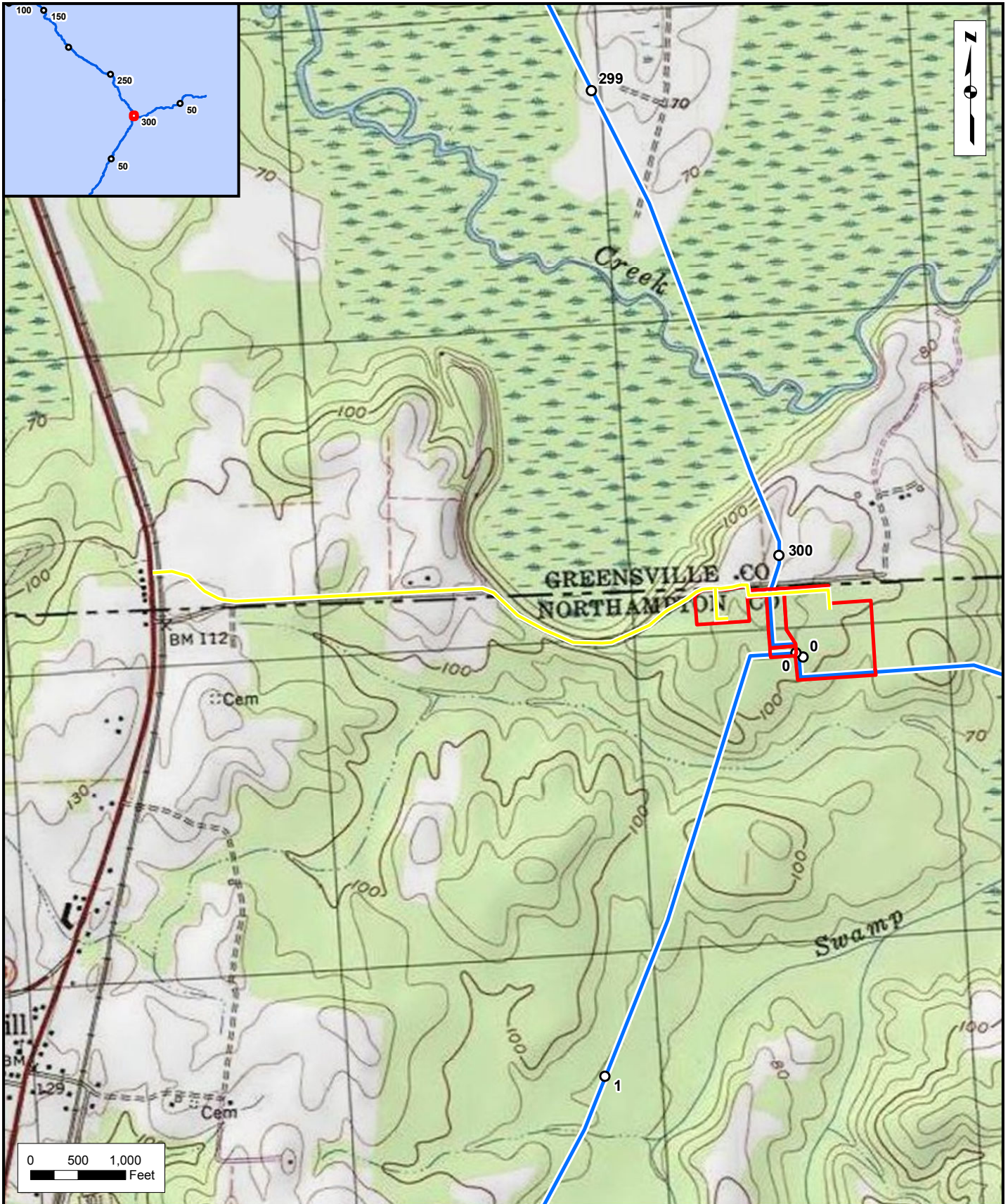
Nonjurisdictional Facilities Figures



- ACP Centerline
- Site Boundary
- Pipeline Relocation
- Electric Transmission
- Road Improvement

Atlantic Coast Pipeline
Figure 1.11.1-3
 Locations of Utilities, Pipe Relocations,
 and Road Improvement Project at
 Compressor Station 1



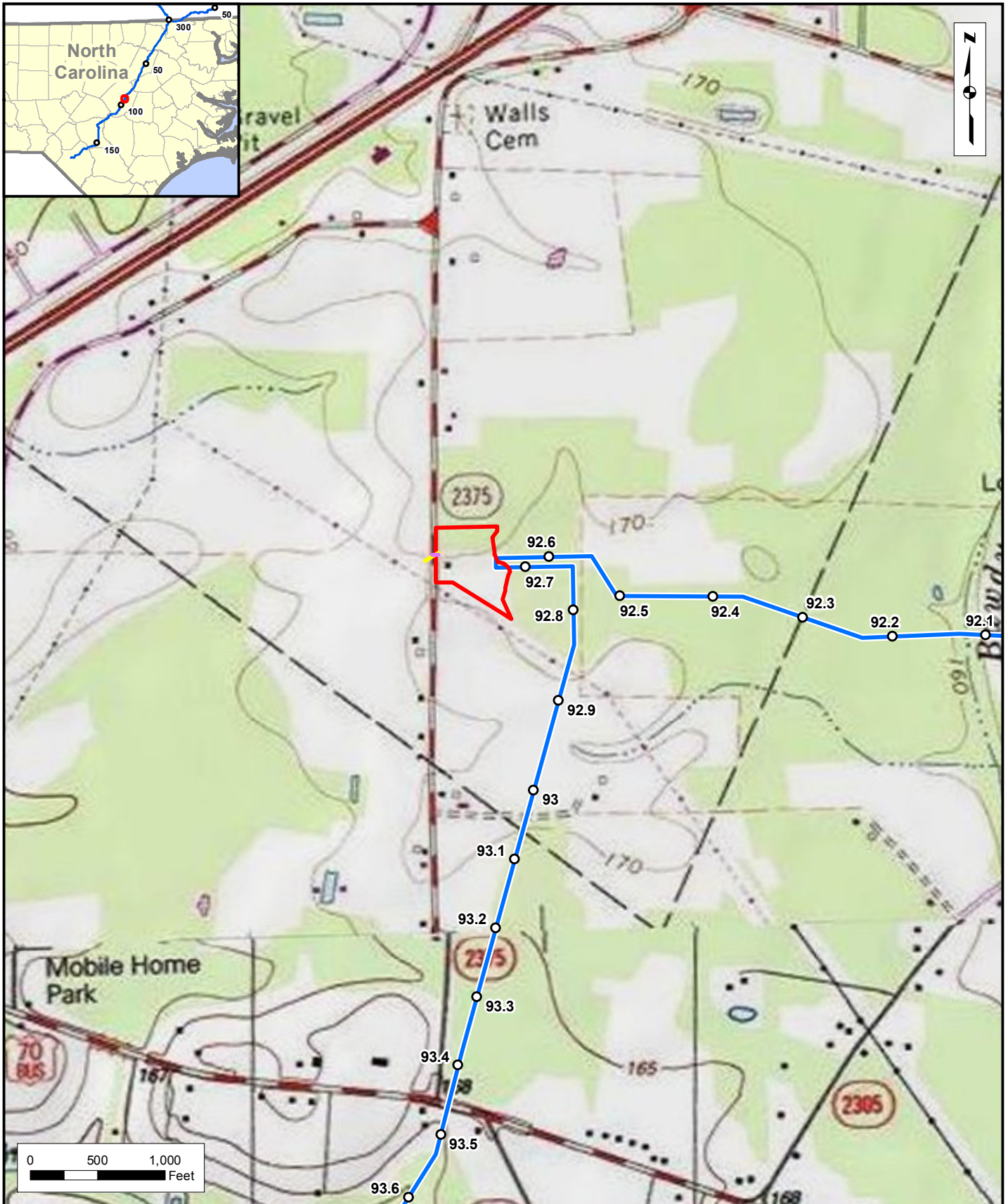


Atlantic Coast PipelineSM





- ▭ Site Boundary
- ACP Centerline
- Electric Transmission

Atlantic Coast Pipeline
Figure 1.11.1-5
 Locations of Utilities at Compressor Station 3
 and the Northampton Office Building



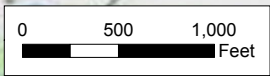
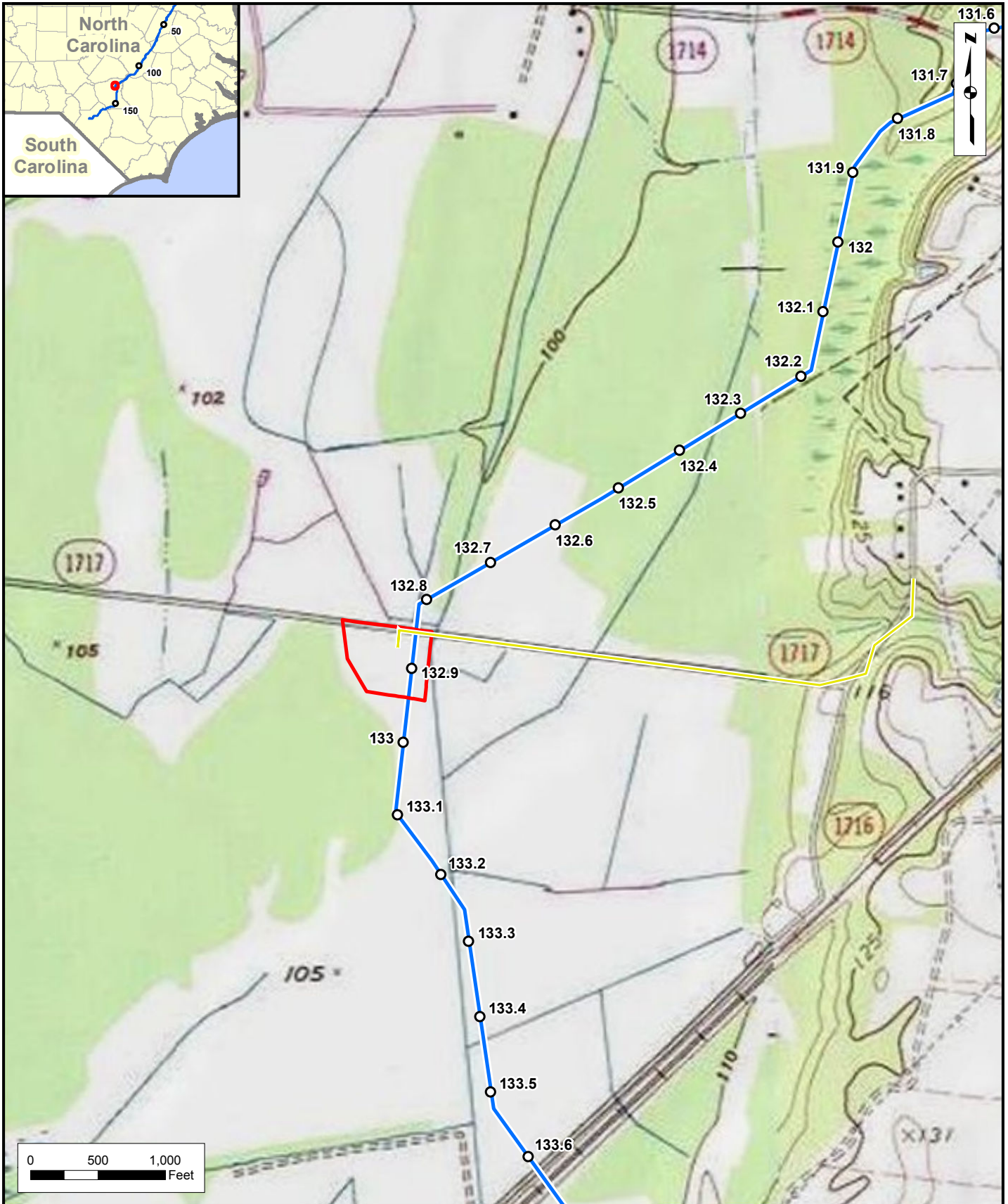


Atlantic Coast PipelineSM

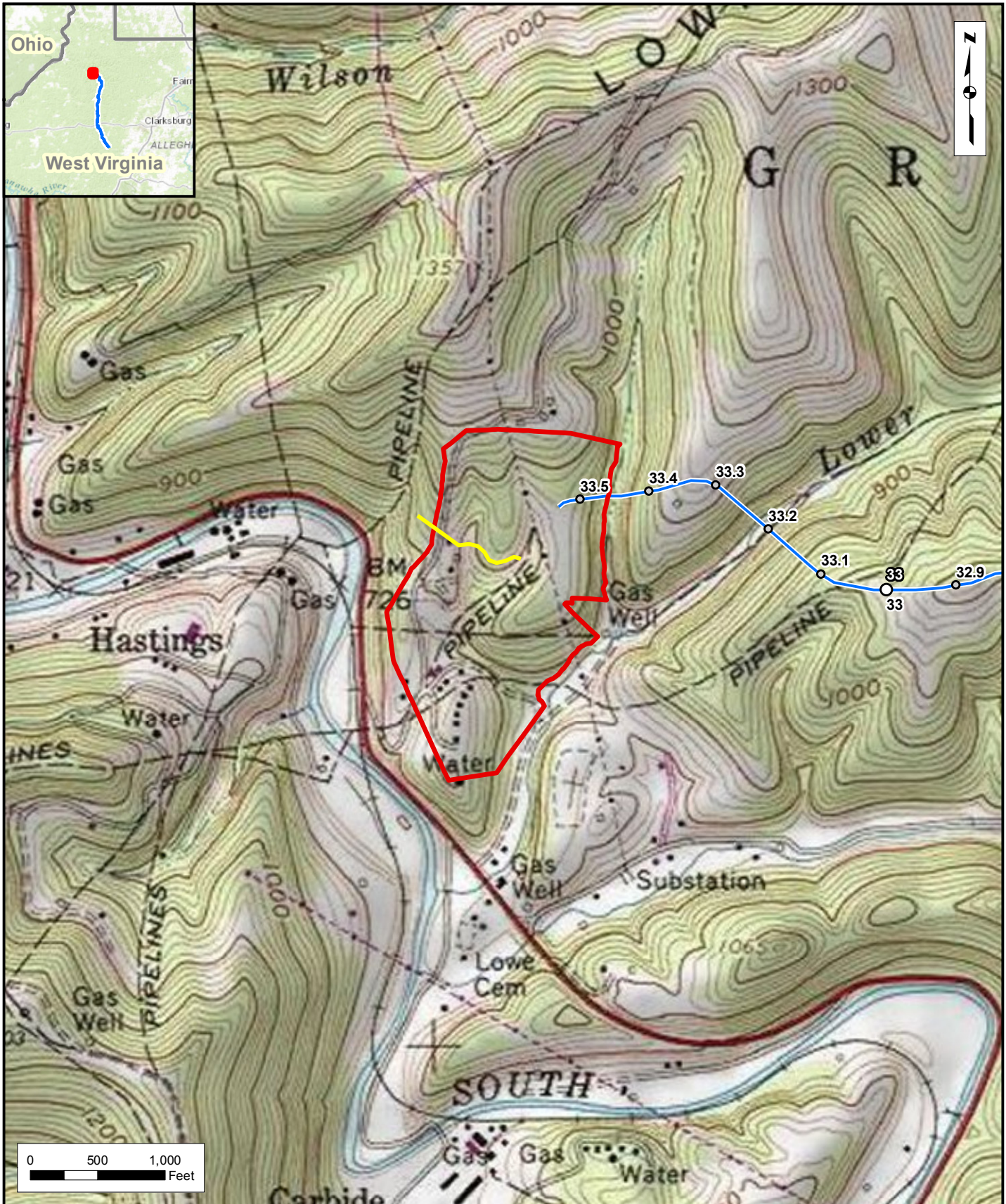
-  ACP Centerline
-  Site Boundary
-  Electric Transmission
-  Water Line




Atlantic Coast Pipeline
Figure 1.11.1-9
 Locations of Utilities at the Smithfield
 M&R Station and Office Building





	<ul style="list-style-type: none"> ▭ Site Boundary ↘ ACP Centerline ↘ Electric Transmission 	<p>Atlantic Coast Pipeline Figure 1.11.1-10 Locations of Utilities at the Fayetteville M&R Station</p>
--	---	---



-  SHP Centerline
-  Site Boundary
-  Electric Transmission

Supply Header Project
Figure 1.11.1-12
 Locations of Utilities at the
 Mockingbird Hill Compressor Station

