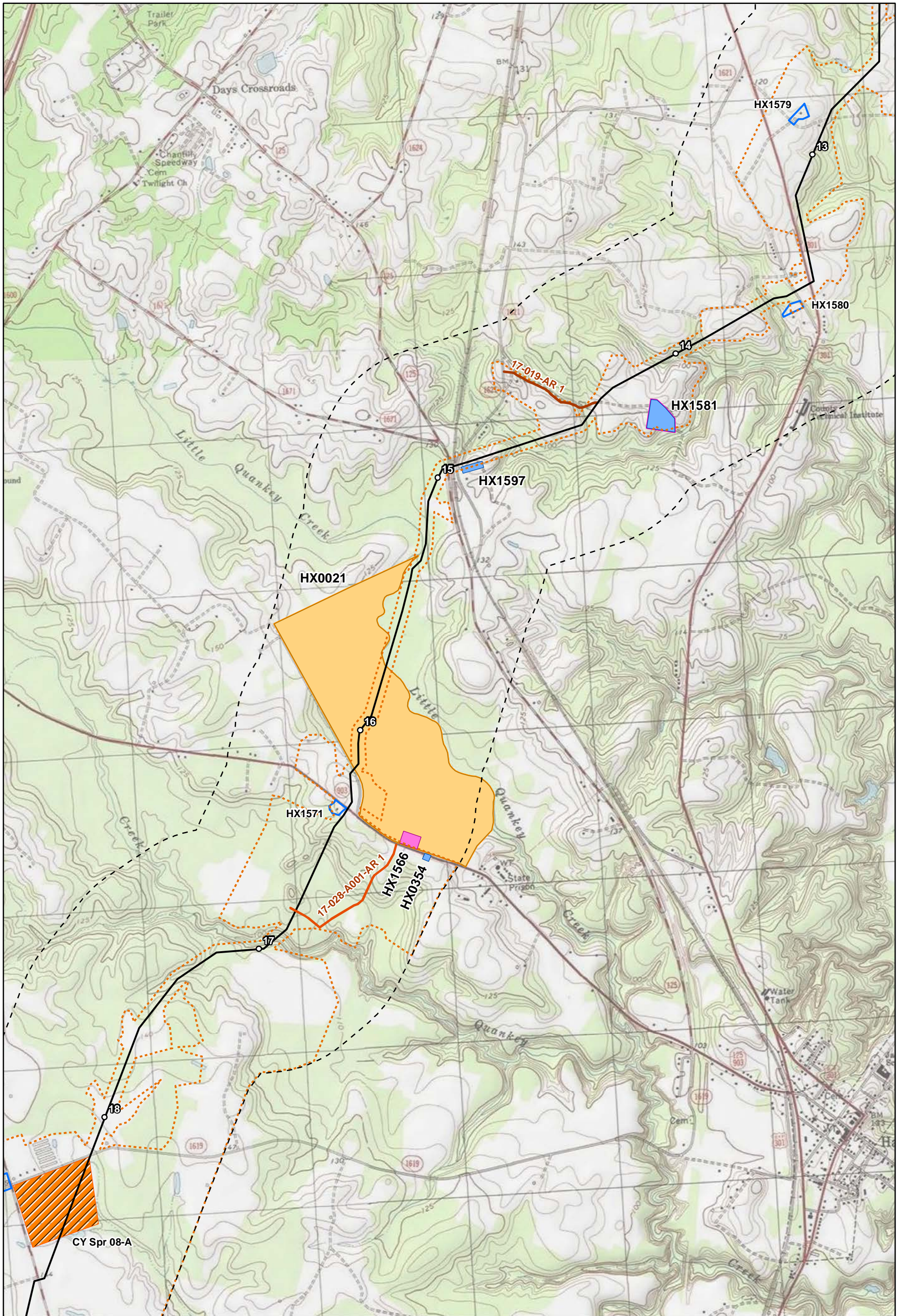


## **APPENDIX A – PROJECT MAPS DEPICTING RESOURCE LOCATIONS**







0 0.25 0.5 0.75 1 Miles

0 0.25 0.5 0.75 1 Kilometers

Sheet 1 of 15

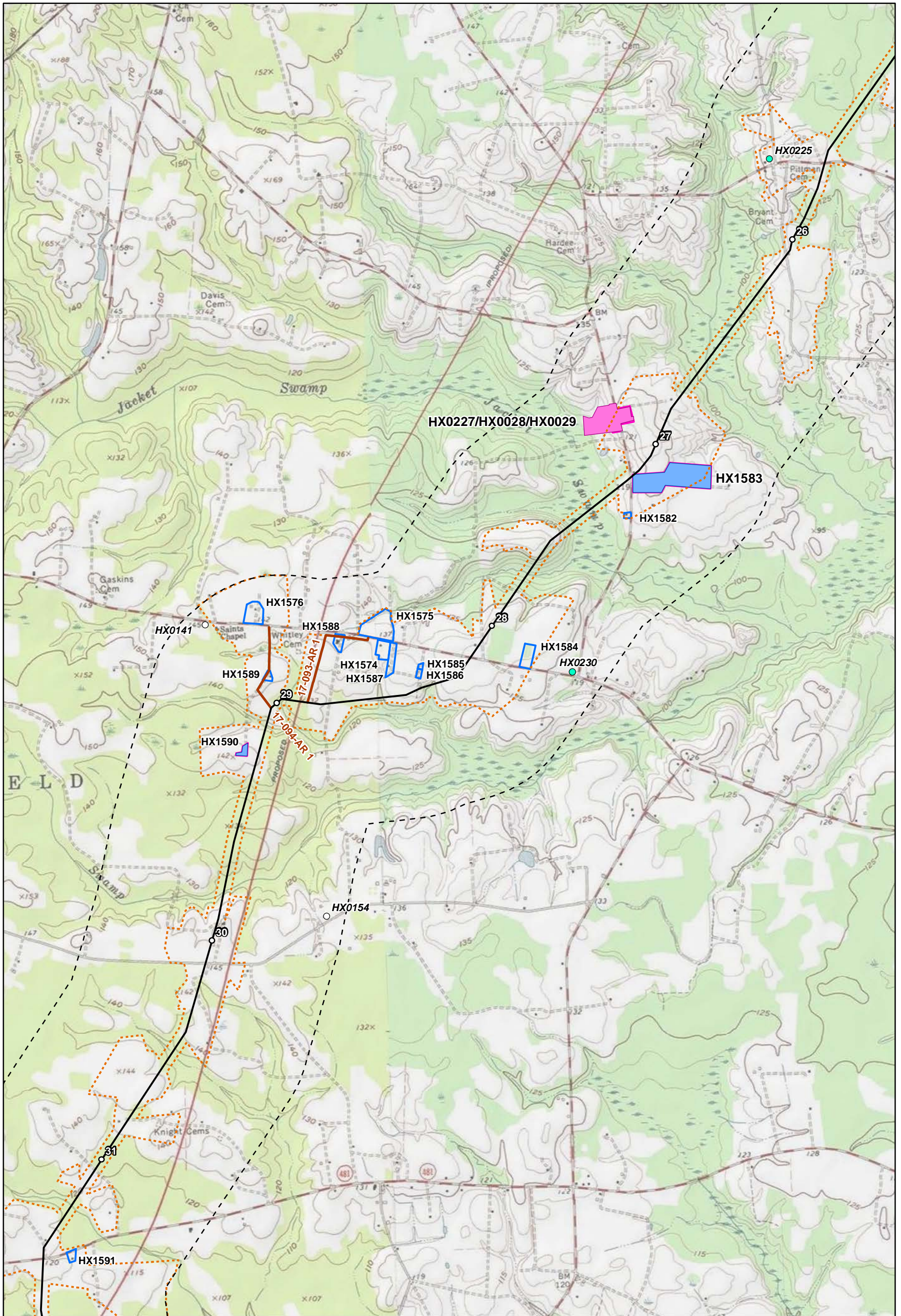
Current Route  
 Mileposts  
 0.5-Mile Radius  
 Access Roads  
 Visual APE  
 Contractor Yards

Previously Recorded Resources:  
 NR (Listed)  
 SA  
 SD  
 SL (Study List)  
 SLD (Study List [D])  
 SLDOE (Study List [DOE])  
 SLDOEHD (Study List [DOE-Hist. Dist.])  
 SO  
 National Register Listed Property  
 Historic District

Historic Resources Recorded by Dovetail:  
 Listed  
 NAS  
 Not Eligible  
 Potentially Eligible  
 ERM Addendum 2 Survey  
 Eligible  
 Ineligible  
 ERM Addendum 3 Survey  
 Ineligible  
 Eligible

ERM Addendum 4 Survey  
 New survey - Eligible  
 Assumed Eligible  
 Revisit - Listed  
 Revisit - Eligible  
 Revisit - Ineligible  
 Revisit - Not Extant, Ineligible





0 0.25 0.5 0.75 1 Miles

0 0.25 0.5 0.75 1 Kilometers

Sheet 2 of 15

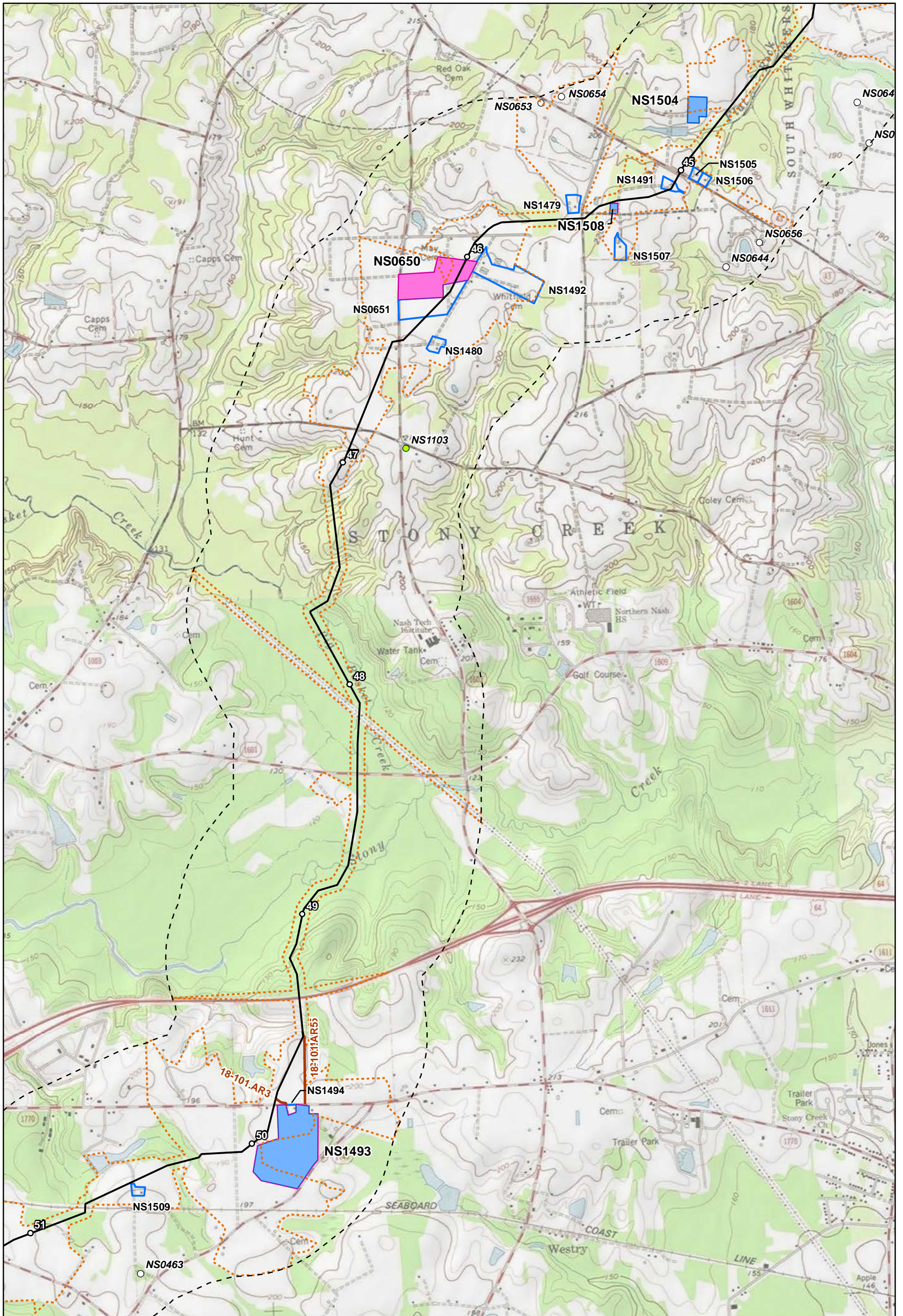
Current Route  
 Mileposts  
 0.5-Mile Radius  
 Access Roads  
 Visual APE  
 Contractor Yards  
 National Register Listed Property  
 Historic District

**Previously Recorded Resources:**  
 NR (Listed)  
 SA  
 SD  
 SL (Study List)  
 SLD (Study List [DJ])  
 SLDOE (Study List [DOE])  
 SLDOEHD (Study List [DOE-Hist. Dist.])  
 SO  
 National Register Listed Property  
 Historic District

**Historic Resources Recorded by Dovetail:**  
 Listed  
 NAS  
 Not Eligible  
 Potentially Eligible  
**ERM Addendum 2 Survey**  
 Eligible  
 Ineligible  
**ERM Addendum 3 Survey**  
 Ineligible  
 Eligible

**ERM Addendum 4 Survey**  
 New survey - Eligible  
 Assumed Eligible  
 Revisit - Listed  
 Revisit - Eligible  
 Revisit - Ineligible  
 Revisit - Not Extant, Ineligible





Sheet 3 of 15

0 0.25 0.5 0.75 1 Miles

0 0.25 0.5 0.75 1 Kilometers

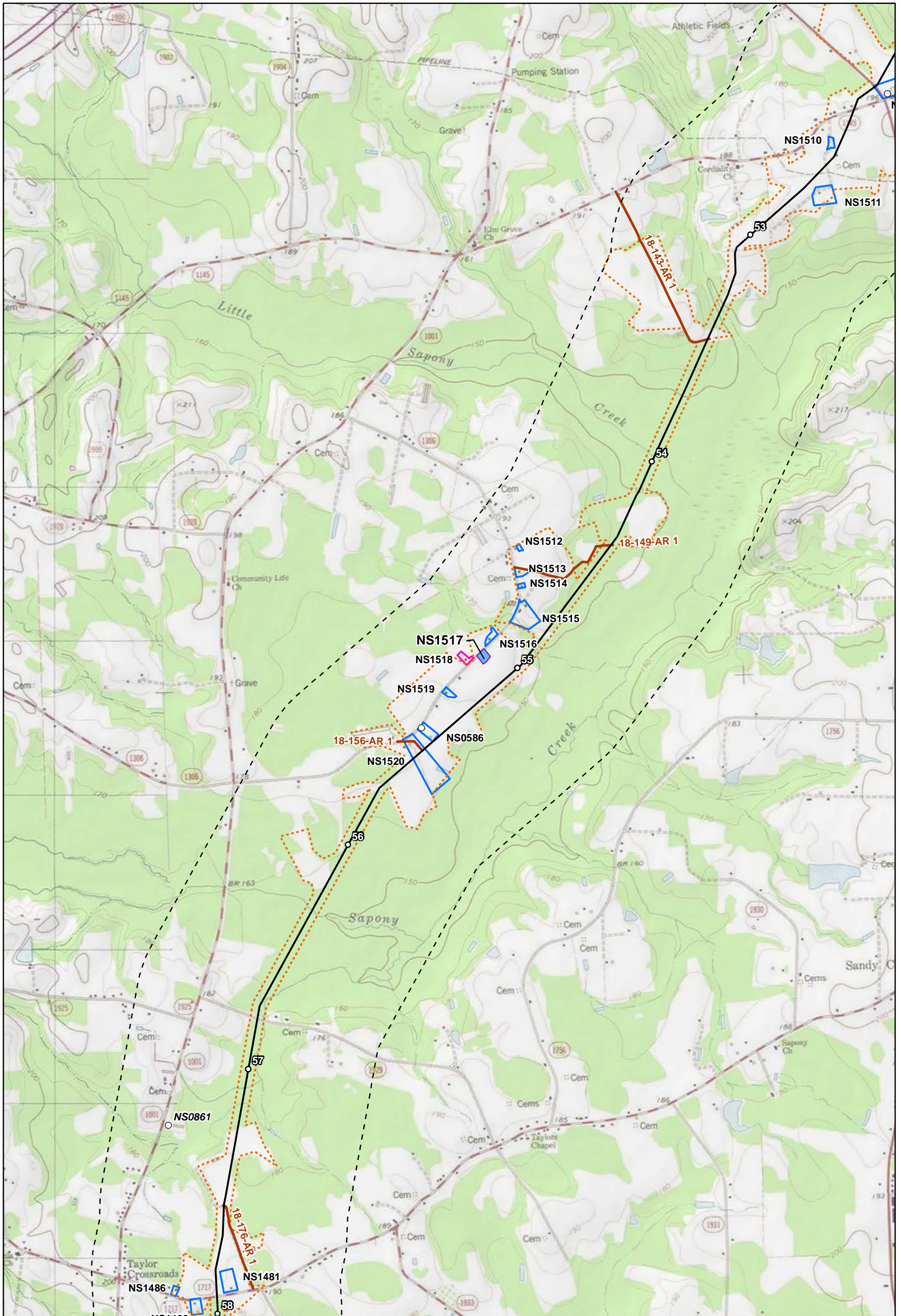
— Current Route  
 ○ Mileposts  
 - - - 0.5-Mile Radius  
 — Access Roads  
 - - - Visual APE  
 ▨ Contractor Yards

● NR (Listed)  
 ● SA  
 ● SD  
 ● SL (Study List)  
 ● SLD (Study List [D])  
 ● SLDOE (Study List [DOE])  
 ● SLDOEHD (Study List [DOE-Hist. Dist.])  
 ○ SO  
 ▨ National Register Listed Property  
 ▨ Historic District

▨ Listed  
 ▨ Not Eligible  
 ▨ Potentially Eligible  
 ERM Addendum 2 Survey  
 ● Eligible  
 ● Ineligible  
 ERM Addendum 3 Survey  
 ● Ineligible  
 ● Eligible

ERM Addendum 4 Survey  
 ▨ New survey - Eligible  
 ▨ Assumed Eligible  
 ▨ Revisit - Listed  
 ▨ Revisit - Eligible  
 ▨ Revisit - Ineligible  
 ▨ Revisit - Not Extant, Ineligible





Sheet 4 of 15

0 0.25 0.5 0.75 1 Miles

0 0.25 0.5 0.75 1 Kilometers

Legend:

- Current Route
- Mileposts
- ⊞ 0.5-Mile Radius
- Access Roads
- ⊞ Visual APE
- ▨ Contractor Yards

Previously Recorded Resources:

- NR (Listed)
- SA
- SD
- SL (Study List)
- SLD (Study List [D])
- SLDOE (Study List [DOE])
- SLDOEHD (Study List [DOE-Hist. Dist.])
- SO
- ▭ National Register Listed Property
- ▭ Historic District

Historic Resources Recorded by Dovetail:

- ▭ Listed
- ▭ Not Eligible
- ▭ Potentially Eligible

ERM Addendum 2 Survey

- ▭ Eligible
- ▭ Ineligible

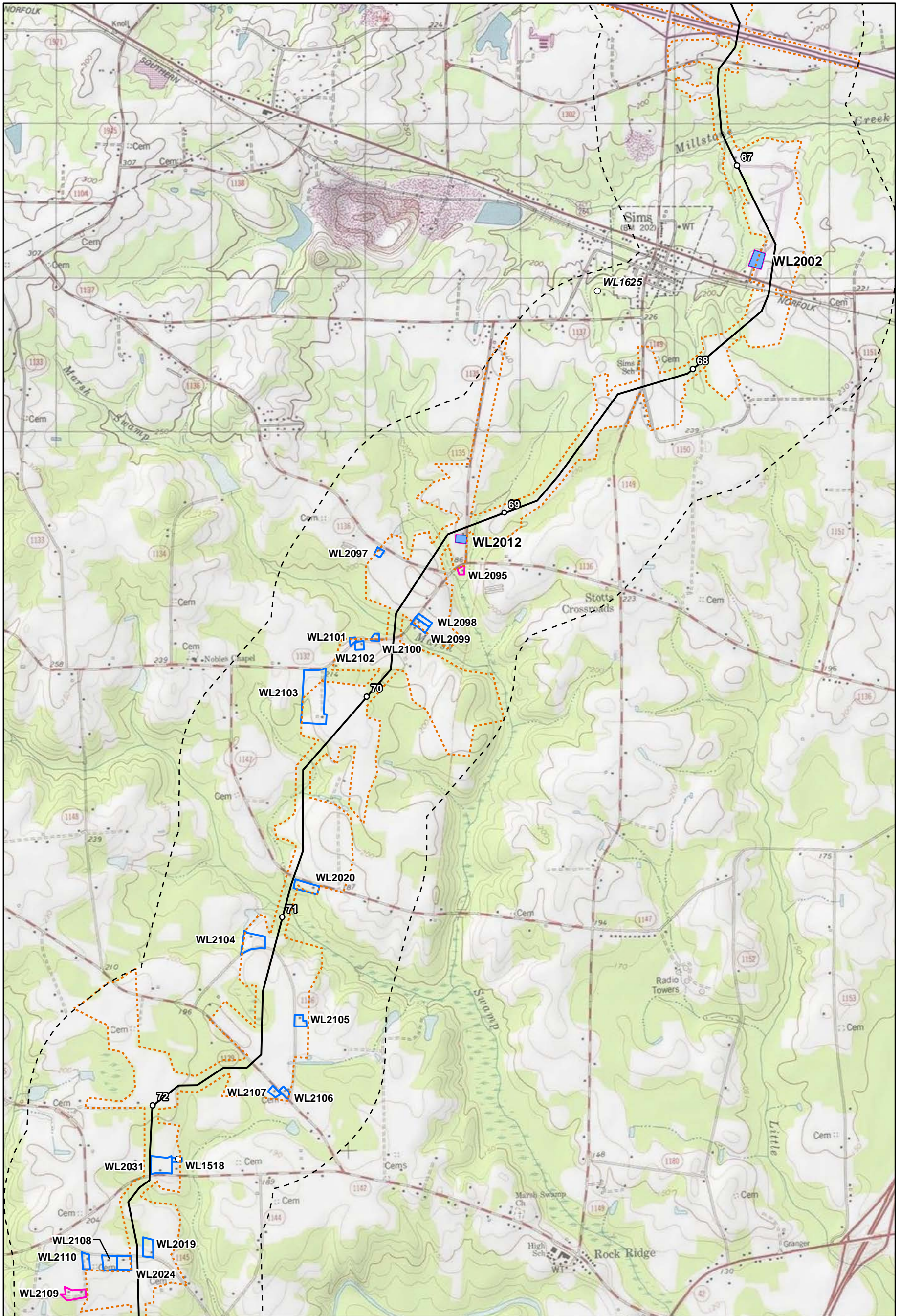
ERM Addendum 3 Survey

- Ineligible
- Eligible

ERM Addendum 4 Survey

- ▭ New survey - Eligible
- ▭ Assumed Eligible
- ▭ Revisit - Listed
- ▭ Revisit - Eligible
- ▭ Revisit - Ineligible
- ▭ Revisit - Not Extant, Ineligible





0 0.25 0.5 0.75 1 Miles

0 0.25 0.5 0.75 1 Kilometers

Sheet 5 of 15

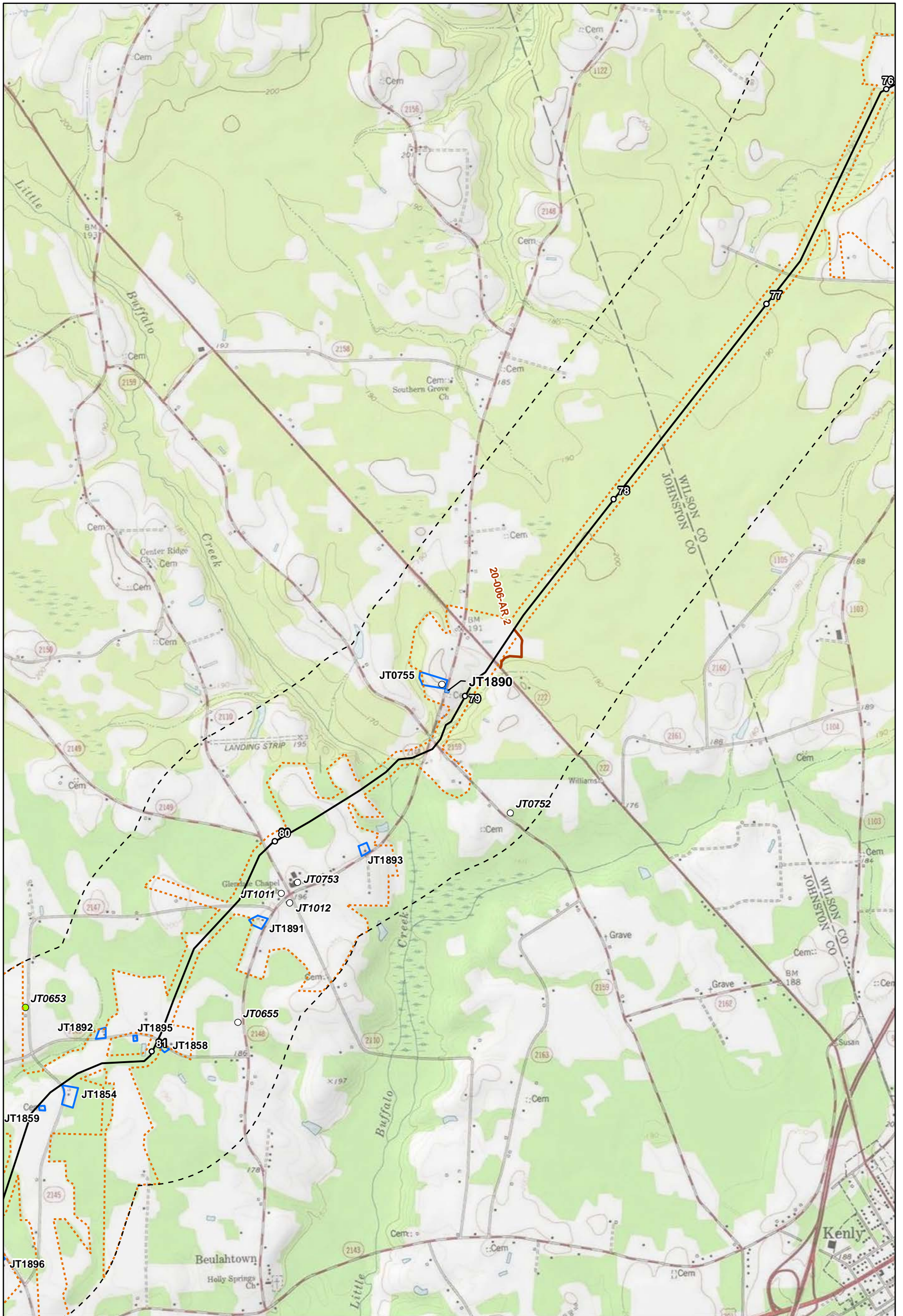
Current Route  
 Mileposts  
 0.5-Mile Radius  
 Access Roads  
 Visual APE  
 Contractor Yards

Previously Recorded Resources:  
 NR (Listed)  
 SA  
 SD  
 SL (Study List)  
 SLD (Study List [D])  
 SLDOE (Study List [DOE])  
 SLDOEHD (Study List [DOE-Hist. Dist.])  
 SO  
 National Register Listed Property  
 Historic District

Historic Resources Recorded by Dovetail:  
 Listed  
 NAS  
 Not Eligible  
 Potentially Eligible  
 ERM Addendum 2 Survey  
 Eligible  
 Ineligible  
 ERM Addendum 3 Survey  
 Ineligible  
 Eligible

ERM Addendum 4 Survey  
 New survey - Eligible  
 Assumed Eligible  
 Revisit - Listed  
 Revisit - Eligible  
 Revisit - Ineligible  
 Revisit - Not Extant, Ineligible





Sheet 6 of 15

0 0.25 0.5 0.75 1 Miles

0 0.25 0.5 0.75 1 Kilometers

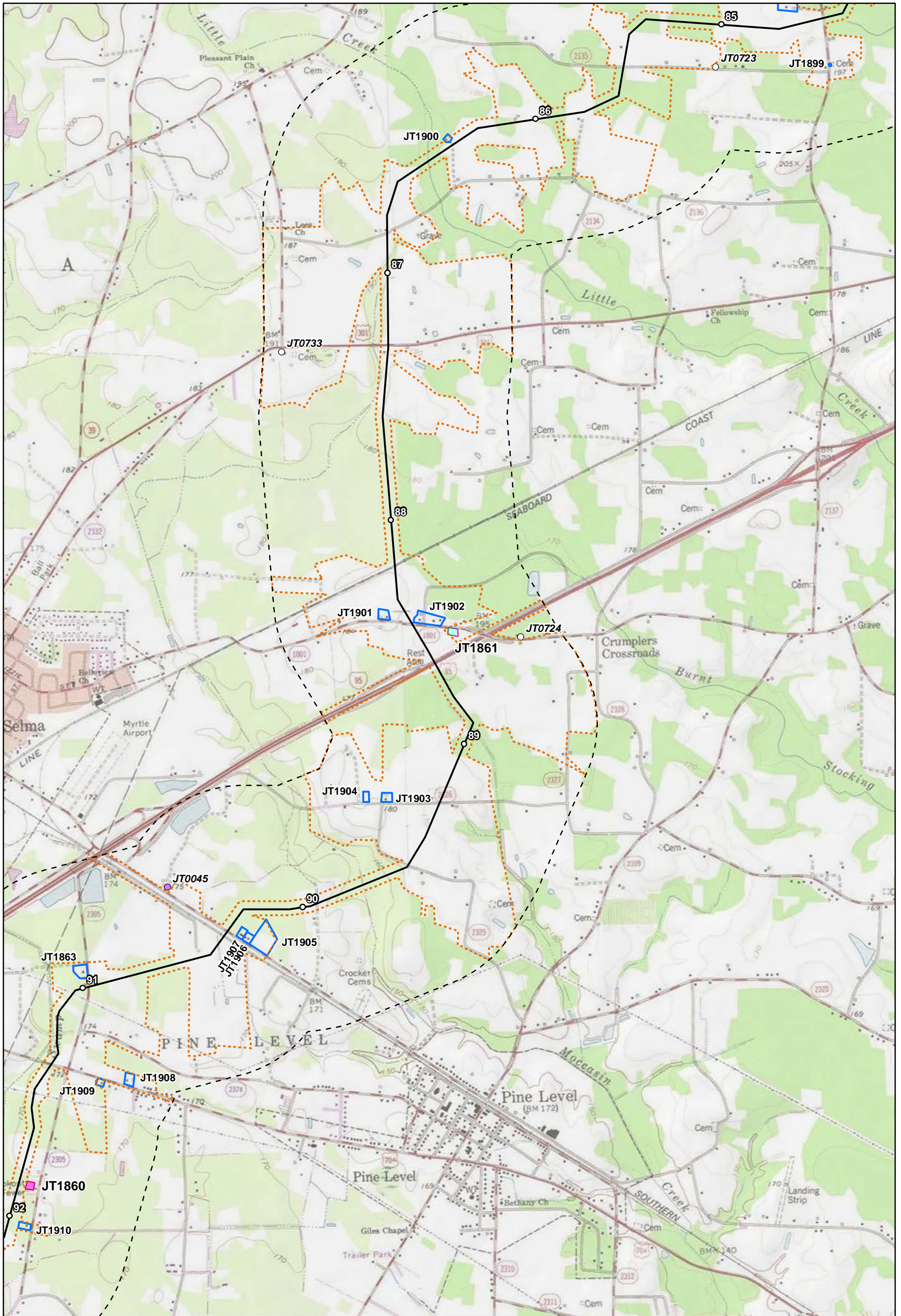
Current Route  
 Mileposts  
 0.5-Mile Radius  
 Access Roads  
 Visual APE  
 Contractor Yards

Previously Recorded Resources:  
 NR (Listed)  
 SA  
 SD  
 SL (Study List)  
 SLD (Study List [D])  
 SLDOE (Study List [DOE])  
 SLDOEHD (Study List [DOE-Hist. Dist.])  
 SO  
 National Register Listed Property  
 Historic District

Historic Resources Recorded by Dovetail:  
 Listed  
 NAS  
 Not Eligible  
 Potentially Eligible  
 ERM Addendum 2 Survey  
 Eligible  
 Ineligible  
 ERM Addendum 3 Survey  
 Ineligible  
 Eligible

ERM Addendum 4 Survey  
 New survey - Eligible  
 Assumed Eligible  
 Revisit - Listed  
 Revisit - Eligible  
 Revisit - Ineligible  
 Revisit - Not Extant, Ineligible





Sheet 7 of 15

0 0.25 0.5 0.75 1 Miles

0 0.25 0.5 0.75 1 Kilometers

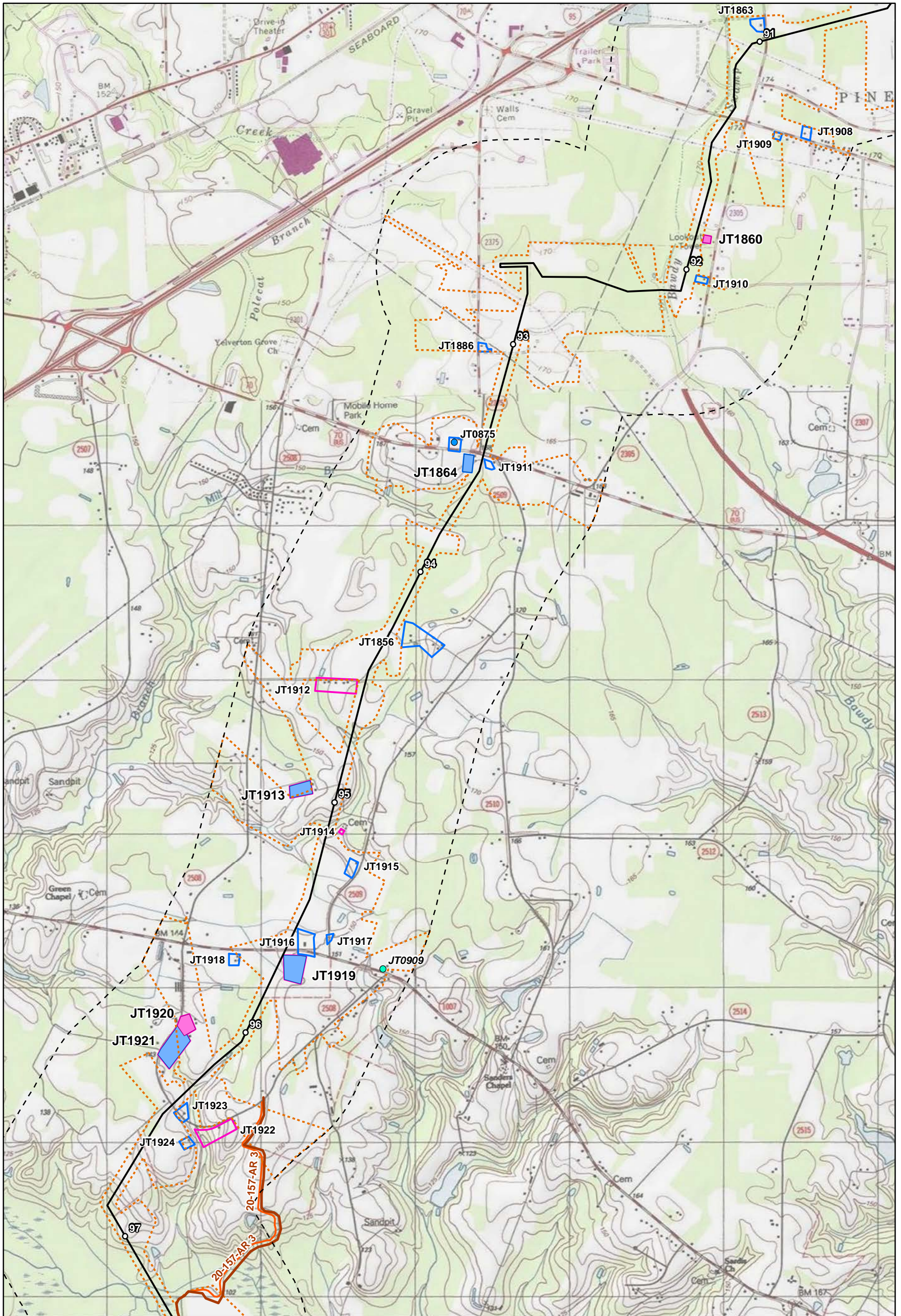
Current Route  
 Mileposts  
 0.5-Mile Radius  
 Access Roads  
 Visual APE  
 Contractor Yards

Previously Recorded Resources:  
 NR (Listed)  
 SA  
 SD  
 SL (Study List)  
 SLD (Study List [D])  
 SLDOE (Study List [DOE])  
 SLDOEHD (Study List [DOE-Hist. Dist.])  
 SO  
 National Register Listed Property  
 Historic District

Historic Resources Recorded by Dovetail:  
 Listed  
 NAS  
 Not Eligible  
 Potentially Eligible  
 ERM Addendum 2 Survey  
 Eligible  
 Ineligible  
 ERM Addendum 3 Survey  
 Ineligible  
 Eligible

ERM Addendum 4 Survey  
 New survey - Eligible  
 Assumed Eligible  
 Revisit - Listed  
 Revisit - Eligible  
 Revisit - Ineligible  
 Revisit - Not Extant, Ineligible





Sheet 8 of 15

0 0.25 0.5 0.75 1 Miles

0 0.25 0.5 0.75 1 Kilometers

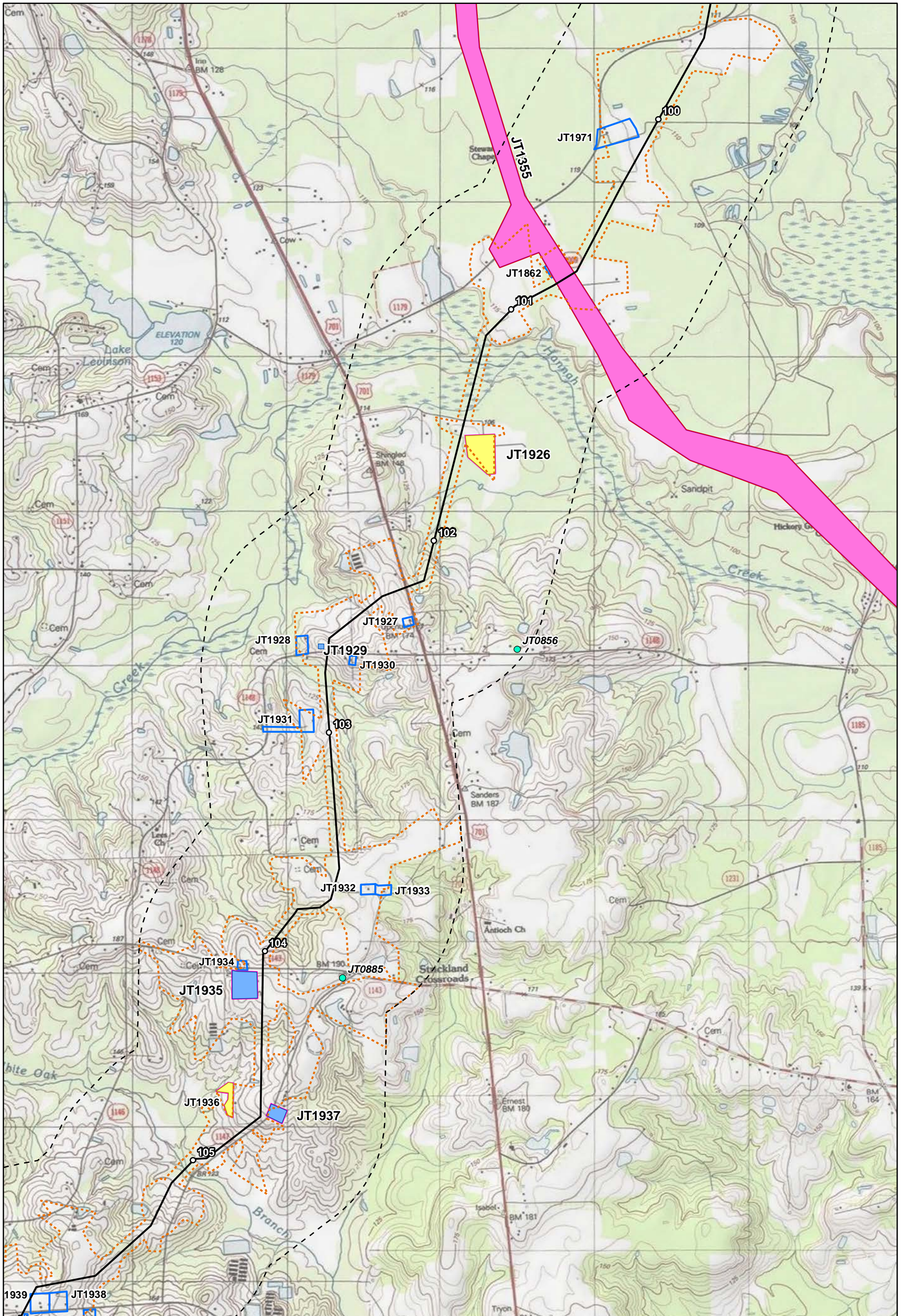
Current Route  
 Mileposts  
 0.5-Mile Radius  
 Access Roads  
 Visual APE  
 Contractor Yards

Previously Recorded Resources:  
 NR (Listed)  
 SA  
 SD  
 SL (Study List)  
 SLD (Study List [D])  
 SLDOE (Study List [DOE])  
 SLDOEHD (Study List [DOE-Hist. Dist.])  
 SO  
 National Register Listed Property  
 Historic District

Historic Resources Recorded by Dovetail:  
 Listed  
 NAS  
 Not Eligible  
 Potentially Eligible  
 ERM Addendum 2 Survey  
 Eligible  
 Ineligible  
 ERM Addendum 3 Survey  
 Ineligible  
 Eligible

ERM Addendum 4 Survey  
 New survey - Eligible  
 Assumed Eligible  
 Revisit - Listed  
 Revisit - Eligible  
 Revisit - Ineligible  
 Revisit - Not Extant, Ineligible





Sheet 9 of 15

0 0.25 0.5 0.75 1 Miles

0 0.25 0.5 0.75 1 Kilometers

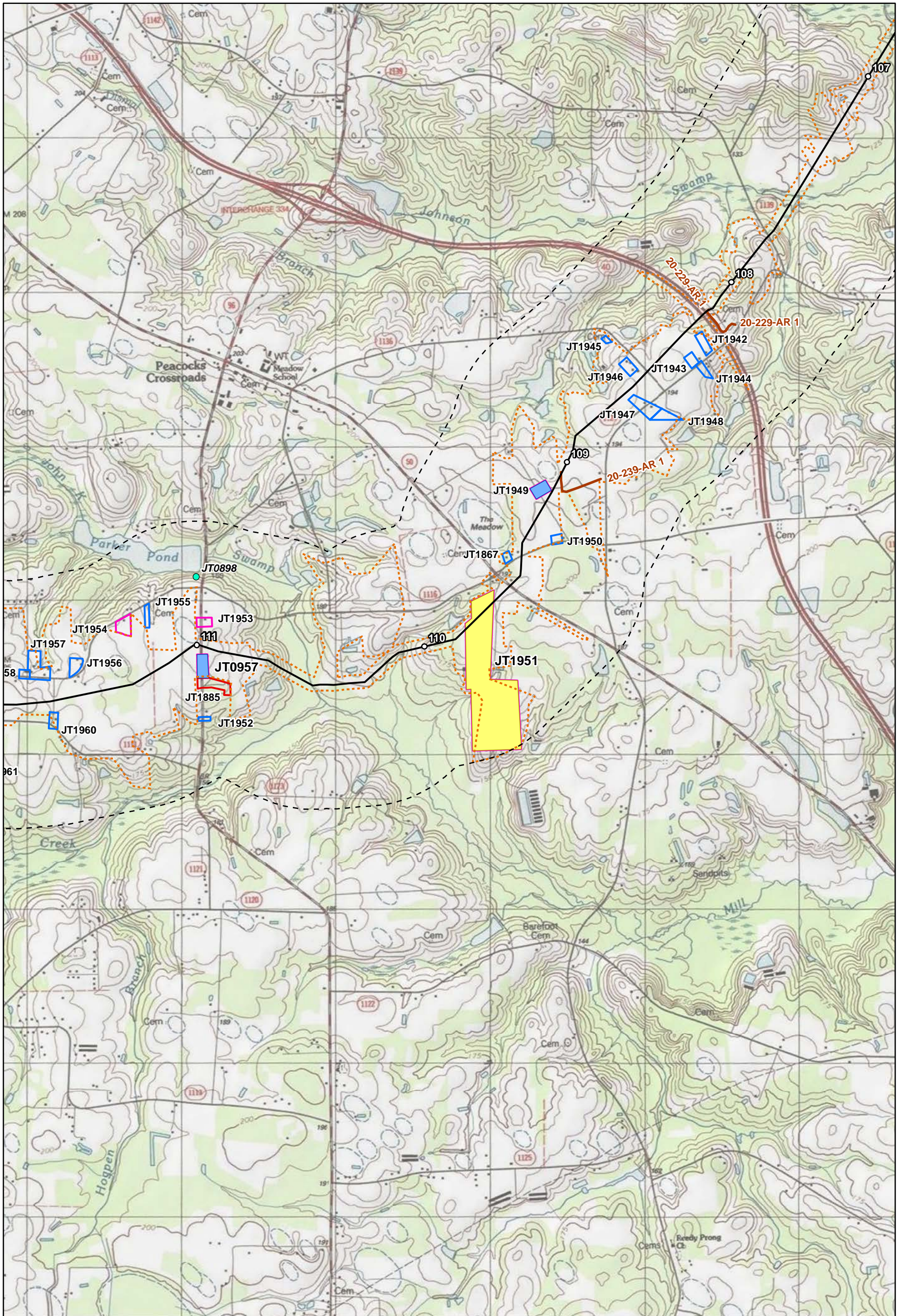
— Current Route  
 ○ Mileposts  
 [ ] 0.5-Mile Radius  
 — Access Roads  
 [ ] Visual APE  
 [ ] Contractor Yards

● NR (Listed)  
 ● SA  
 ● SD  
 ● SL (Study List)  
 ● SLD (Study List [D])  
 ● SLDOE (Study List [DOE])  
 ● SLDOEHD (Study List [DOE-Hist. Dist.])  
 ○ SO  
 [ ] National Register Listed Property  
 [ ] Historic District

[ ] Listed  
 [ ] Not Eligible  
 [ ] Potentially Eligible  
 [ ] Eligible  
 [ ] Ineligible  
 [ ] Eligible  
 [ ] Ineligible  
 [ ] Eligible

[ ] ERM Addendum 4 Survey  
 [ ] New survey - Eligible  
 [ ] Assumed Eligible  
 [ ] Revisit - Listed  
 [ ] Revisit - Eligible  
 [ ] Revisit - Ineligible  
 [ ] Revisit - Not Extant, Ineligible





Sheet 10 of 15

0 0.25 0.5 0.75 1 Miles

0 0.25 0.5 0.75 1 Kilometers

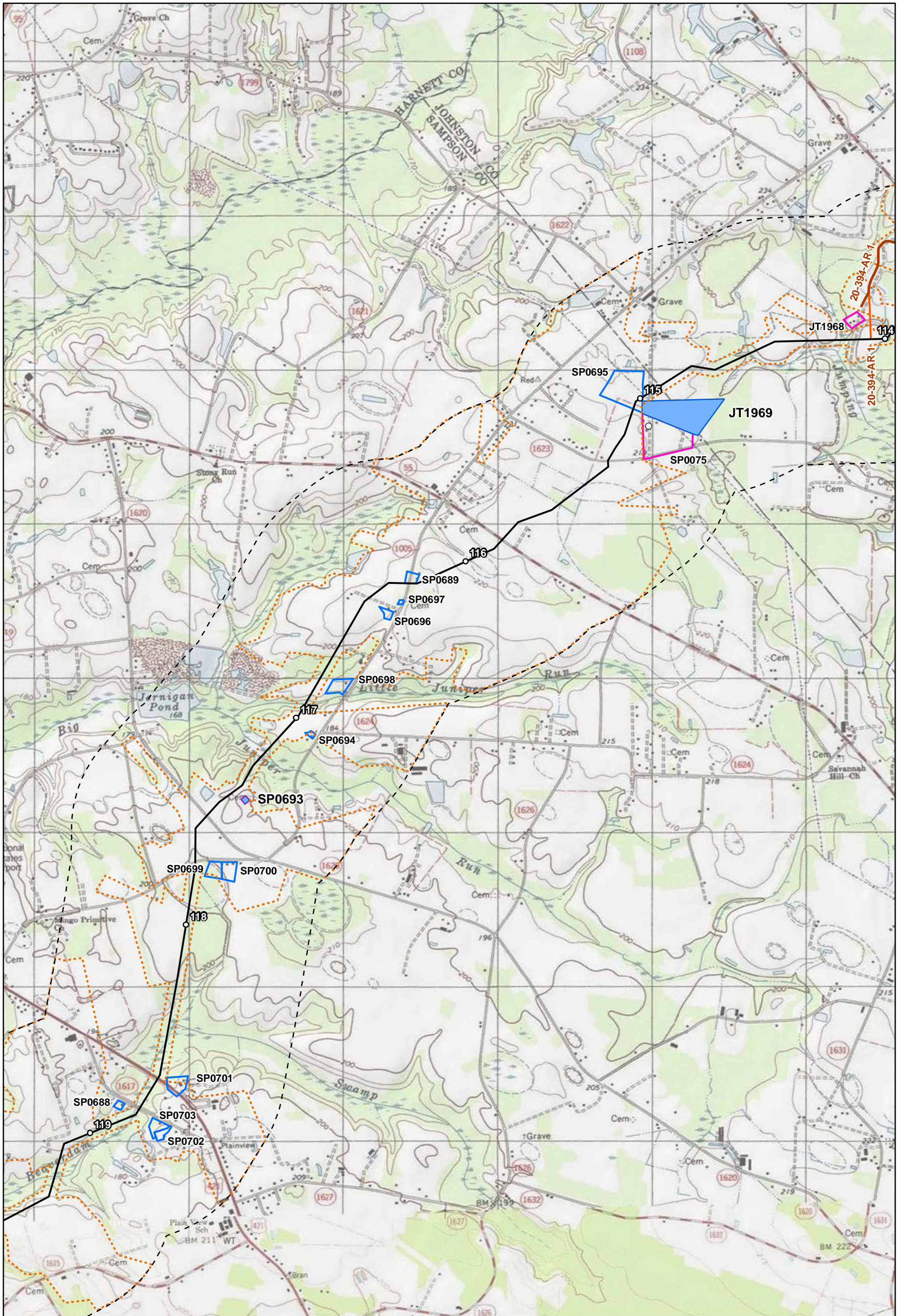
Current Route  
 Mileposts  
 0.5-Mile Radius  
 Access Roads  
 Visual APE  
 Contractor Yards

Previously Recorded Resources:  
 NR (Listed)  
 SA  
 SD  
 SL (Study List)  
 SLD (Study List [D])  
 SLDOE (Study List [DOE])  
 SLDOEHD (Study List [DOE-Hist. Dist.])  
 SO  
 National Register Listed Property  
 Historic District

Historic Resources Recorded by Dovetail:  
 Listed  
 NAS  
 Not Eligible  
 Potentially Eligible  
 ERM Addendum 2 Survey  
 Eligible  
 Ineligible  
 ERM Addendum 3 Survey  
 Ineligible  
 Eligible

ERM Addendum 4 Survey  
 New survey - Eligible  
 Assumed Eligible  
 Revisit - Listed  
 Revisit - Eligible  
 Revisit - Ineligible  
 Revisit - Not Extant, Ineligible





Sheet 11 of 15

0 0.25 0.5 0.75 1 Miles

0 0.25 0.5 0.75 1 Kilometers

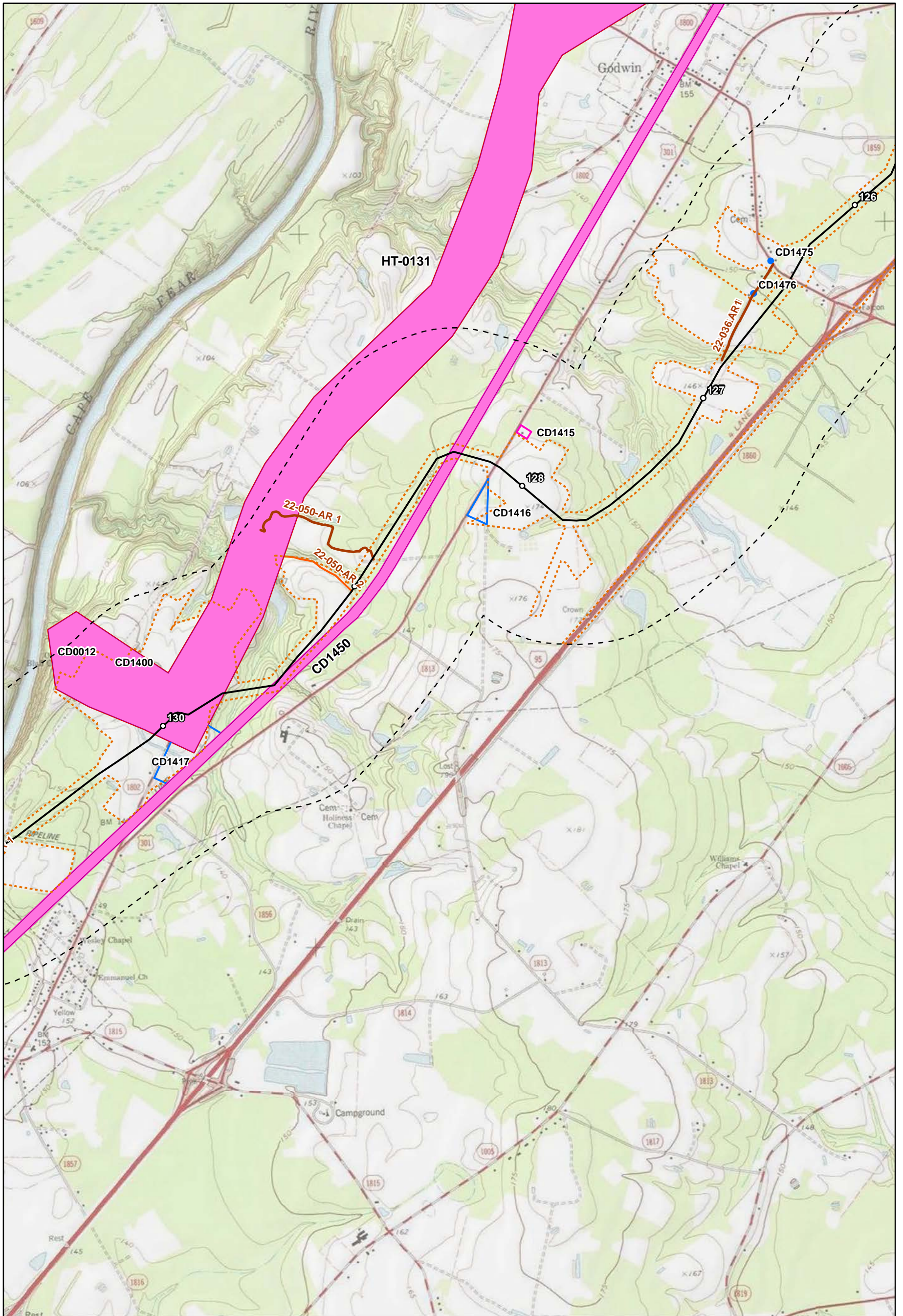
Current Route  
 Mileposts  
 0.5-Mile Radius  
 Access Roads  
 Visual APE  
 Contractor Yards

Previously Recorded Resources:  
 NR (Listed)  
 SA  
 SD  
 SL (Study List)  
 SLD (Study List [D])  
 SLDOE (Study List [DOE])  
 SLDOEHD (Study List [DOE-Hist. Dist.])  
 SO  
 National Register Listed Property  
 Historic District

Historic Resources Recorded by Dovetail:  
 Listed  
 NAS  
 Not Eligible  
 Potentially Eligible  
 ERM Addendum 2 Survey  
 Eligible  
 Ineligible  
 ERM Addendum 3 Survey  
 Ineligible  
 Eligible

ERM Addendum 4 Survey  
 New survey - Eligible  
 Assumed Eligible  
 Revisit - Listed  
 Revisit - Eligible  
 Revisit - Ineligible  
 Revisit - Not Extant, Ineligible





0 0.25 0.5 0.75 1 Miles  
 0 0.25 0.5 0.75 1 Kilometers

Sheet 12 of 15

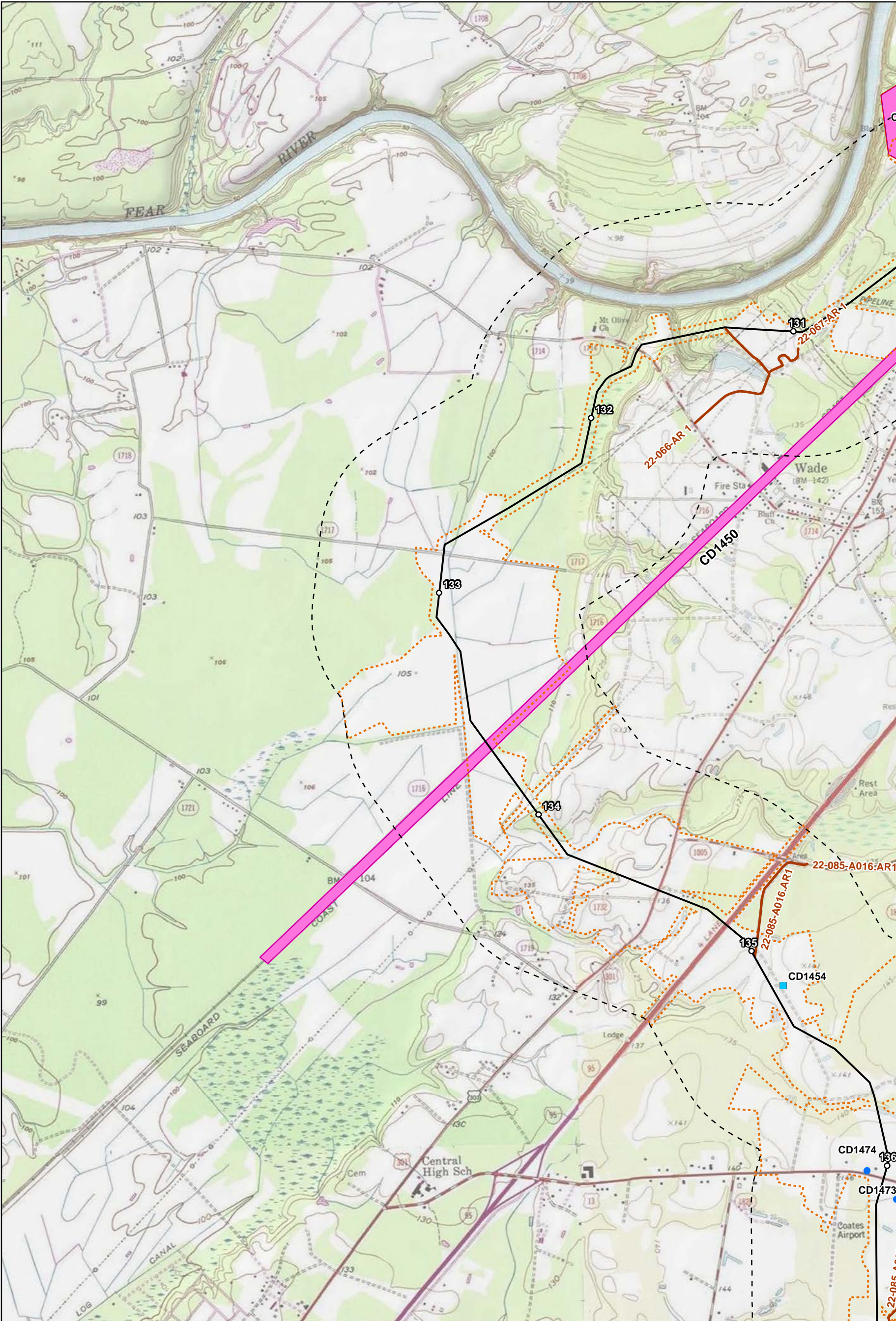
Current Route  
 Mileposts  
 0.5-Mile Radius  
 Access Roads  
 Visual APE  
 Contractor Yards

Previously Recorded Resources:  
 NR (Listed)  
 SA  
 SD  
 SL (Study List)  
 SLD (Study List [D])  
 SLDOE (Study List [DOE])  
 SLDOEHD (Study List [DOE-Hist. Dist.])  
 SO  
 National Register Listed Property  
 Historic District

Historic Resources Recorded by Dovetail:  
 Listed  
 Not Eligible  
 Potentially Eligible  
 ERM Addendum 2 Survey  
 Eligible  
 Ineligible  
 ERM Addendum 3 Survey  
 Ineligible  
 Eligible

ERM Addendum 4 Survey  
 New survey - Eligible  
 Assumed Eligible  
 Revisit - Listed  
 Revisit - Eligible  
 Revisit - Ineligible  
 Revisit - Not Extant, Ineligible

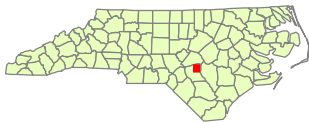




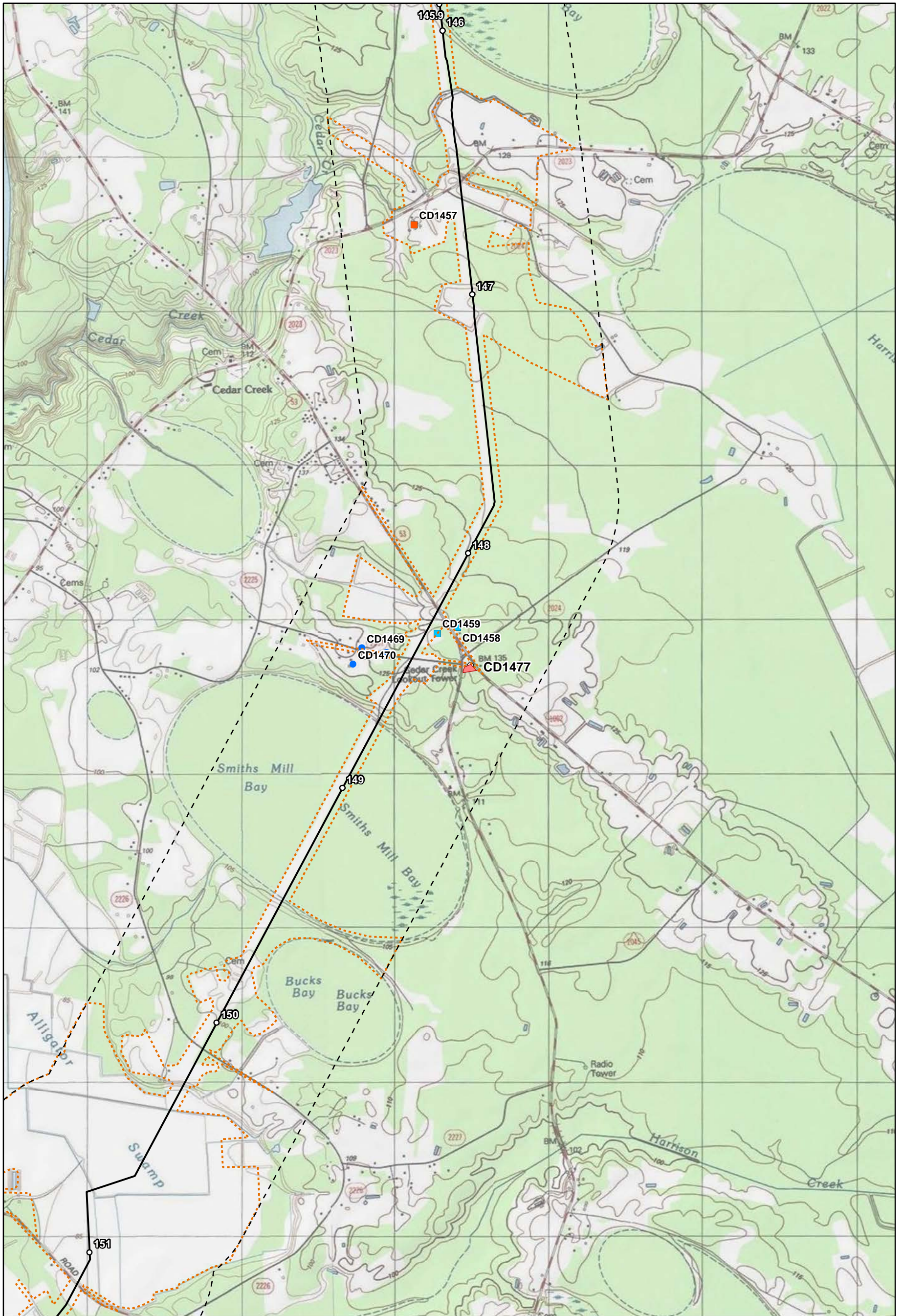
**Scale:**  
 0 0.25 0.5 0.75 1 Miles  
 0 0.25 0.5 0.75 1 Kilometers

**Legend:**

|   |  |   |  |
|---|--|---|--|
| <ul style="list-style-type: none"> <li>— Current Route</li> <li>○ Mileposts</li> <li>○ 0.5-Mile Radius</li> <li>— Access Roads</li> <li>--- Visual APE</li> <li>▨ Contractor Yards</li> </ul> | <p>Previously Recorded Resources:</p> <ul style="list-style-type: none"> <li>● NR (Listed)</li> <li>● SA</li> <li>● SD</li> <li>● SL (Study List)</li> <li>● SLD (Study List [D])</li> <li>● SLDOE (Study List [DOE])</li> <li>● SLDOEHD (Study List [DOE-Hist. Dist.])</li> <li>○ SO</li> <li>▭ National Register Listed Property</li> <li>▭ Historic District</li> </ul> | <p>Historic Resources Recorded by Dovetail:</p> <ul style="list-style-type: none"> <li>▭ Listed</li> <li>▭ NAS</li> <li>▭ Not Eligible</li> <li>▭ Potentially Eligible</li> </ul> <p>ERM Addendum 2 Survey</p> <ul style="list-style-type: none"> <li>▭ Eligible</li> <li>▭ Ineligible</li> </ul> <p>ERM Addendum 3 Survey</p> <ul style="list-style-type: none"> <li>● Ineligible</li> <li>● Eligible</li> </ul> | <p>ERM Addendum 4 Survey</p> <ul style="list-style-type: none"> <li>▭ New survey - Eligible</li> <li>▭ Assumed Eligible</li> <li>▭ Revisit - Listed</li> <li>▭ Revisit - Eligible</li> <li>▭ Revisit - Ineligible</li> <li>▭ Revisit - Not Extant, Ineligible</li> </ul> |
|---|--|---|--|







Sheet 14 of 15

0 0.25 0.5 0.75 1 Miles

0 0.25 0.5 0.75 1 Kilometers

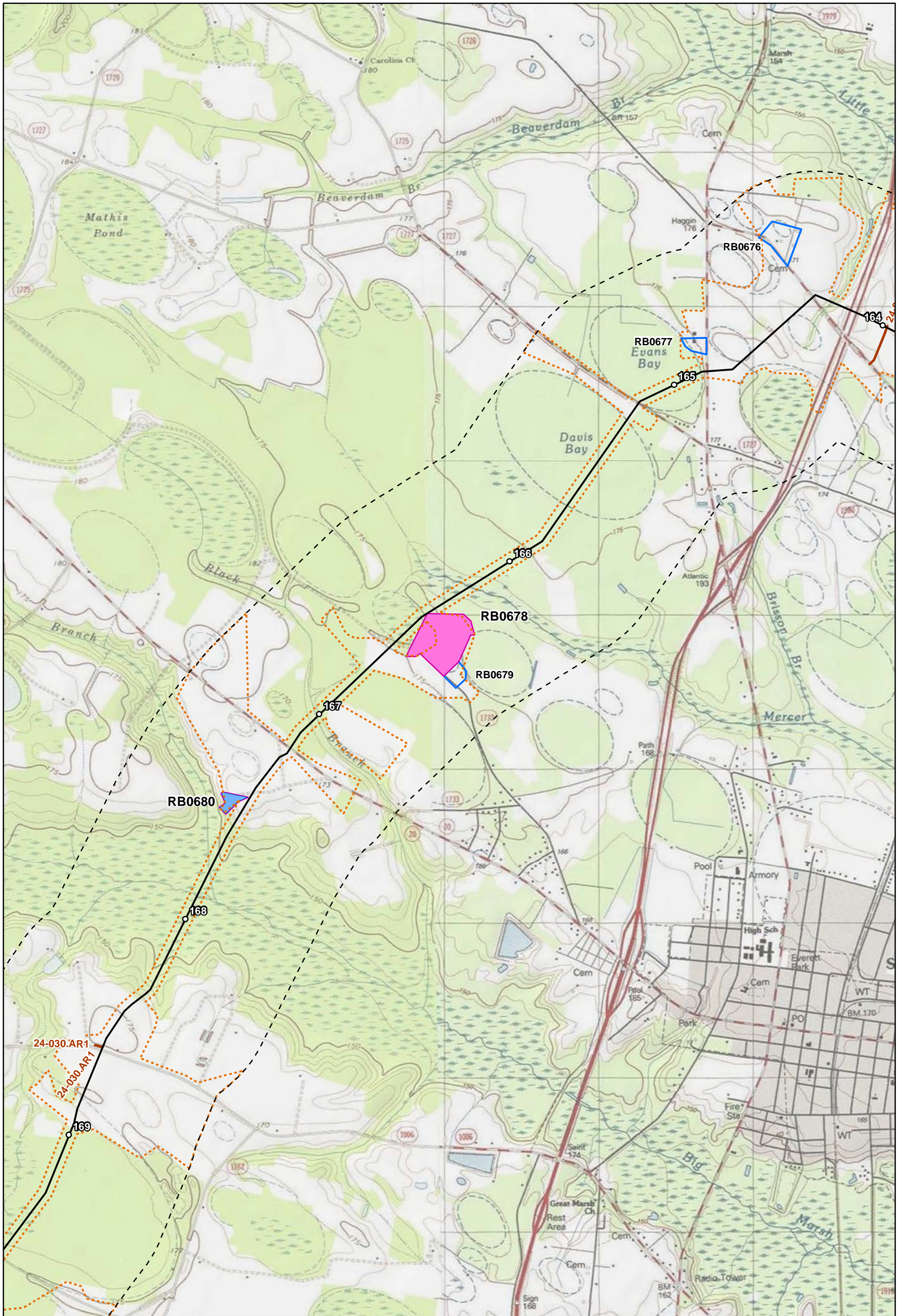
Current Route  
 Mileposts  
 0.5-Mile Radius  
 Access Roads  
 Visual APE  
 Contractor Yards

Previously Recorded Resources:  
 NR (Listed)  
 SA  
 SD  
 SL (Study List)  
 SLD (Study List [D])  
 SLDOE (Study List [DOE])  
 SLDOEHD (Study List [DOE-Hist. Dist.])  
 SO  
 National Register Listed Property  
 Historic District

Historic Resources Recorded by Dovetail:  
 Listed  
 NAS  
 Not Eligible  
 Potentially Eligible  
 ERM Addendum 2 Survey  
 Eligible  
 Ineligible  
 ERM Addendum 3 Survey  
 Ineligible  
 Eligible

ERM Addendum 4 Survey  
 New survey - Eligible  
 Assumed Eligible  
 Revisit - Listed  
 Revisit - Eligible  
 Revisit - Ineligible  
 Revisit - Not Extant, Ineligible





Sheet 15 of 15

**Scale**

0 0.25 0.5 0.75 1 Miles

0 0.25 0.5 0.75 1 Kilometers

**Legend**

- Current Route
- Mileposts
- 0.5-Mile Radius
- Access Roads
- Visual APE
- ▨ Contractor Yards

**Previously Recorded Resources:**

- NR (Listed)
- SA
- SD
- SL (Study List)
- SLD (Study List [D])
- SLDOE (Study List [DOE])
- SLDOEHD (Study List [DOE-Hist. Dist.])
- SO
- ▭ National Register Listed Property
- ▭ Historic District

**Historic Resources Recorded by Dovetail:**

- ▭ Listed
- ▭ Not Eligible
- ▭ Potentially Eligible

**ERM Addendum 2 Survey**

- ▭ Eligible
- ▭ Ineligible

**ERM Addendum 3 Survey**

- Ineligible
- Eligible

**ERM Addendum 4 Survey**

- ▭ New survey - Eligible
- ▭ Assumed Eligible
- ▭ Revisit - Listed
- ▭ Revisit - Eligible
- ▭ Revisit - Ineligible
- ▭ Revisit - Not Extant, Ineligible



## **APPENDIX B – RESOURCE PHOTOGRAPHS**









Photo 1. CD1450 (Fayetteville Cutoff), facing west.



Photo 2. CD1477 (Cedar Creek Fire Tower), facing northeast.





Photo 3. CD1477 (Cedar Creek Fire Tower), facing northeast.



Photo 4. HT0131, Averagesboro Battlefield Potential National Register Boundary area from the proposed





Photo 5. HX0021, view to east.



Photo 6. HX0021, view to west.





Photo 7. HX0021, facing northeast.



Photo 8. HX0021, facing southwest.





Photo 9. HX0021, house, facing northeast.



Photo 10. HX0021, barn, facing north.





Photo 11. HX0021, shed, facing north-northeast.



Photo 12. HX0021, equipment shed, facing north-northeast.





Photo 13. HX0021, milking barn, facing northeast.



Photo 14. HX0021, corn and equipment barn, facing east-northeast.





Photo 15. HX0021, accessory building, facing south-southwest.



Photo 16. HX0021, chicken house, facing east.





Photo 17. HX0021, amphitheater, facing east.



Photo 18. HX0021, smokehouse, facing north.





Photo 19. HX0021, barn door on smokehouse, facing south.



Photo 20. HX0021, smokehouse cannery shed, facing east.





Photo 21. HX0021, pumphouse, facing east.



Photo 22. HX0021, wash room/laundry, facing northeast.





Photo 23. HX0021, wash room/laundry, shed roof addition, facing north-northwest.



Photo 24. HX0021, picnic area, facing south-southwest.





Photo 25. HX0021, wooden bridge, facing south-southeast.



Photo 26. HX0227, main house, facing east.





Photo 27. HX0227, main house, facing northeast.



Photo 28. HX0227, accessory structures, facing east-northeast.





Photo 29. HX0227, rear accessory structures, facing southeast.



Photo 30. HX0227, rear accessory structure, facing east.





Photo 31. HX0227, rear accessory structure, facing northeast.



Photo 32. HX0227, rear accessory structure, facing southeast.





Photo 33. HX0228, birdhouse, and HX0229, pack house, facing northwest.



Photo 34. HX0228, birdhouse, facing west.





Photo 35. HX0229, facing northwest.



Photo 36. HX0229, facing north-northwest.





Photo 37. HX0229, facing southwest.



Photo 38. HX0229, facing southwest.





Photo 39. HX0354, facing south.



Photo 40. HX0354, facing west-southwest.





Photo 41. HX1556 (Allen Grove Rosenwald School), facing east.



Photo 42. HX1566 (Allen Grove Rosenwald School), facing northwest.





Photo 43. HX1581, facing north-northwest.



Photo 44. HX1581, facing north-northwest.





Photo 45. HX1581, facing northeast.



Photo 46. HX1581, well, facing northwest.





Photo 47. HX1581, garage, facing northeast.



Photo 48. HX1581, pole shelter, facing east-northeast.





Photo 49. HX1581, equipment shelter, facing northeast.



Photo 50. HX1581, pole shelter, facing south.





Photo 51. HX1581, storage sheds, facing southwest.



Photo 52. HX1581, storage structure, facing south.





Photo 53. HX1583, facing northeast.



Photo 54. HX1583, facing east-southeast.





Photo 55. HX1590, facing south.



Photo 56. HX1597, dwelling, facing north.





Photo 57. HX1597, dwelling, collapsed addition, facing south.



Photo 58. HX1597, barn, facing north.





Photo 59. HX1597, tobacco barn 1, facing west.



Photo 60. HX1597, tobacco barn 2, facing northeast.





Photo 61. HX1597, shed, facing south.



Photo 62. JT0957, facing east-northeast.





Photo 63. JT0957, facing east-southeast.



Photo 64. JT0957, garage, facing east.





Photo 65. JT0957, gabled accessory structure 1, facing east.



Photo 66. JT0957, gabled accessory structure 2, facing east-northeast.





Photo 67. JT0957, storage structure, facing east-northeast.



Photo 68. JT0957, pole shelter, facing east.





Photo 69. JT0957, gabled accessory structure 3, facing southeast.



Photo 70. JT0957, gabled accessory structure 3, facing east.





Photo 71. JT1355, Bentonville Battlefield Potential National Register Boundary area from the proposed Project corridor, facing northwest.



Photo 72. JT1355, tree line adjacent to Bentonville Battlefield Potential National Register Boundary area from the proposed Project corridor, facing west-southwest.





Photo 73. JT1860 (Smithfield Fire Lookout Tower), fire tower base, facing northwest.



Photo 74. JT1860 (Smithfield Fire Lookout Tower), facing northwest.





Photo 75. JT1860 (Smithfield Fire Lookout Tower), fire tower observation box, facing west-southwest.



Photo 76. JT1860 (Smithfield Fire Lookout Tower), outbuilding, facing west-northwest.





Photo 77. JT1860 (Smithfield Fire Lookout Tower), equipment shed facing northwest.



Photo 78. JT1864, house, facing southwest.





Photo 79. JT1864, house with rear wings, facing southeast.



Photo 80. JT1864, rear wings, facing southwest.





Photo 81. JT1864, barn, facing south.



Photo 82. JT1890 (Godwin Cemetery), view to the northeast.





Photo 83. JT1890 (Godwin Cemetery), view to the east.



Photo 84. JT1913, facing northeast.





Photo 85. JT1913, facing east.



Photo 86. JT1913, storage structure, facing northeast.





Photo 87. JT1919, facing southeast.



Photo 88. JT1919, free-standing chimney, facing south.





Photo 89. JT1919, accessory structure, facing south-southeast.



Photo 90. JT1920, facing east-southeast. Dove





Photo 91. JT1920, accessory structure 1, facing east-southeast.



Photo 92. JT1920, log cabin, facing southeast.





Photo 93. JT1920, accessory structure 2, facing southeast.



Photo 94. JT1920, tobacco packhouse, facing east-southeast.





Photo 95. JT1921 (Stevens Sausage Company plant), facing south.



Photo 96. JT1921 (Stevens Sausage Company plant), facing southeast.





Photo 97. JT1921 (Stevens Sausage Company plant), facing northeast.



Photo 98. JT1921 (Stevens Sausage Company plant), facing northeast.





Photo 99. JT1929, facing north.



Photo 100. JT1929, facing north-northeast.





Photo 101. JT1935, facing north-northwest.



Photo 102. JT1935, facing north-northwest.





Photo 103. JT1935, facing southeast.



Photo 104. JT1935, facing south.





Photo 105. JT1935, facing northwest.



Photo 106. JT1935 accessory structure 1, facing southeast.





Photo 107. JT1935 accessory structure 1, facing northwest.



Photo 108. JT1935 possible spring house, facing southwest.





Photo 109. JT1935 possible cistern, facing south.



Photo 110. JT1935 accessory structure 2, facing south.





Photo 111. JT1935 cemetery, facing southwest.



Photo 112. JT1937, foundation, facing southeast.





Photo 113. JT1937, facing southeast.



Photo 114. JT1937, vent details, facing east.





Photo 115. JT1937, main entrance facing east.



Photo 116. JT1937, accessory structure facing east.





Photo 117. JT1949, facing north.



Photo 118. JT1949, facing north.





Photo 119. JT1969, facing north-northwest.



Photo 120. JT1969, facing north-northeast.





Photo 121. JT1969, facing north.



Photo 122. JT1969 accessory structure, facing northeast.





Photo 123. JT1969 barn, facing northeast.



Photo 124. NS0650, house, facing northeast.





Photo 125. NS0650, house, facing north.



Photo 126. NS0650, house, facing west.





Photo 127. NS0650, house, facing south.



Photo 128. NS0650, house, well, and propane tank, facing southeast.





Photo 129. NS0650, cabin, facing north.



Photo 130. NS0650, cabin, facing northwest.





Photo 131. NS0650, cabin, facing south.



Photo 132. NS0650, cabin, facing east.





Photo 133. NS0650, summer kitchen, facing northeast



Photo 134. NS0650, summer kitchen, facing northwest.





Photo 135. NS0650 summer kitchen, facing northeast.



Photo 136. NS0650, carport, facing northwest.





Photo 137. NS1493, dwelling, facing north.



Photo 138. NS1493, farm buildings, facing southwest.





Photo 139. NS1493, hay barn, facing west.



Photo 140. NS1493, multi-purpose agricultural building, facing northeast.





Photo 141. NS1493, agricultural outbuilding, facing northwest.



Photo 142. NS1493, chicken coops, facing northeast.





Photo 143. NS1493, agricultural outbuildings, facing north.



Photo 144. NS1493, tobacco barn, facing northwest.





Photo 145. NS1493, tobacco processing shed and tobacco barns, facing east.



Photo 146. NS1493, well house, summer kitchen, meat shed, facing northeast.





Photo 147. NS1493, metal workshop building, facing south.



Photo 148. NS1504, facing northeast.





Photo 149. NS1504, facing northeast.



Photo 150. NS1508, new dwelling, facing north.





Photo 151. NS1508, original dwelling, facing northwest.



Photo 152. NS1508, original dwelling, facing northwest.





Photo 153. NS1508, ca. 1950–1960s storage structure, facing northwest.



Photo 154. NS1508, ca. 1940 barn, facing east-northeast.





Photo 155. NS1508, c. 1920s storage sheds, facing southwest.



Photo 156. NS1508, non-extant building, facing northwest.





Photo 157. NS1508, small shed, facing southeast.



Photo 158. NS1508, ca. 1960 structure, facing southwest.





Photo 159. NS1508, ca. 1940-1950 barn, facing northwest.



Photo 160. NS1508, pole shed, facing southwest.





Photo 161. NS1517, dwelling, facing south-southeast.



Photo 162. NS1517, dwelling, facing southwest.





Photo 163. NS1517, outbuildings, facing southeast.



Photo 164. NS1517, barn, facing south.





Photo 165. RB0678, house, facing northwest.



Photo 166. RB0678, shed, facing north.





Photo 167. RB0678, tobacco barn, facing north.



Photo 168. RB0678, pole shelters, facing northeast.





Photo 169. RB0678, agricultural/storage outbuilding, facing north.



Photo 170. RB0678, well house, facing north.





Photo 171. RB0680, house, facing southeast.



Photo 172. RB0680, house, porch detail.





Photo 173. RB0680, agricultural outbuildings, facing south.



Photo 174. RB0680, agricultural outbuildings, facing southeast.





Photo 175. SP0693 (Hardy Draughton Sr. Family Cemetery), facing east.



Photo 176. WL2002, facing northwest.





Photo 177. WL2002, accessory structure, facing north-northwest.



Photo 178. WL2002, barn, facing north-northwest.





Photo 179. WL2012, facing east.



Photo 180. WL2012, facing southwest.





Photo 181. WL2012, facing north-northwest.



Photo 182. WL2012, outbuilding, facing southwest.



## **APPENDIX C – RESUME OF PRINCIPAL INVESTIGATOR**







# Laura Voisin George

Architectural Historian, Cultural Resources



Laura Voisin George is a Consultant within ERM based in Atlanta.

Ms. Voisin George's background combines in-the-field experience of surveying historic structures, both to determine their eligibility for listing in the National Register of Historic Places and also to assess their physical condition and appropriate treatment options, with the academic experience of teaching university undergraduate history and urban planning courses. She holds a Master of Architectural History and Certificate in Historic Preservation from the University of Virginia. She has conducted baseline survey for historic structures, cultural landscapes and viewsheds, determinations of historic significance, re-evaluations of existing resources, and impact assessment. Ms. Voisin George also has expertise in archival research, and developing historic contexts for historic resources.

Her publications and conference presentations have specialized in cultural succession and reinterpretations of a place's history by subsequent occupants, and the use of archaeological evidence with archival documentation and oral history to challenge conventional assumptions about historical patterns.

Ms. Voisin George has 4 years of experience in the field of historic structures survey and assessment. She has evaluated a wide range of buildings, including regional design influences in the Mid-Atlantic and Southeastern United States and in Southern California, for high-style structures listed in the National Register of Historic Places (NRHP) as well as utilitarian and vernacular buildings, and landscapes.

## Professional Affiliations & Registrations

- Society of Architectural Historians
- Vernacular Architecture Forum

## Fields of Competence

- Impact Assessment for Cultural Heritage
- Historic Structures Survey
- Preparation of Historic Contexts for the Built Environment

## Education

- Master of Architectural History. University of Virginia, Charlottesville, Virginia, USA. 2010
- Certificate in Historic Preservation, University of Virginia, Charlottesville, Virginia, USA. 2010
- Bachelor of Science, Planning and Development. University of Southern California, Los Angeles, California, USA. 2006.

## Training

- Virginia Forum (panel moderator), Salem, Virginia, USA. 2012; Lexington, Virginia, USA. 2011
- Southeast Society of Architectural Historian Annual Conference, Jackson, Mississippi, USA. 2009
- Victorian Society Summer School, Studies in Architecture, Decorative and Fine Arts, Design and Landscape, Newport, Rhode Island, USA. 2009
- Society of Architectural Historians Annual Conference, Pasadena, California, USA. 2009

## Publications

"A Good Life: Turn of the 19th-Century Strategies in Albemarle County and Beyond" (co-written with Dr. Alison Bell), *Papers from Upland Archaeology in the East Symposium XI*, compiled by Clarence R. Geier, James Madison University, Harrisonburg, Virginia, 2014.

"Surveying the Past: Virginia archaeological team uncovers layers of meaning in a Jeffersonian map from The Huntington," *Huntington Library Frontiers*, Spring/Summer 2010



## **Key Projects**

### **Gulf Xpress Project, Union and Grenada Counties, Mississippi, and Gulf Xpress Project, Davidson and Wayne Counties, Tennessee, Phase I Cultural Resources Reports, Columbia Gulf Transmission, 2015 Architectural Historian**

Ms. Voisin George planned and conducted field survey, identifying previously-undocumented historic structures in the APE of proposed compressor stations, performed determinations of eligibility for the National Register of Historic Places (NRHP) for the newly-identified resources, and assessed potential project impacts.

### **Remington Pratts Gordonsville Transmission Line, U.S.A., Dominion Virginia Power, 2015 Architectural Historian**

Ms. Voisin George conducted field assessments of previously-listed historic structures and sites within the project's area of potential effect (APE), with consultation with the Virginia Department of Historic Resources (Virginia's State Historic Preservation Office) for clarification of Civil War battlefield boundaries, documented their viewshed toward the proposed transmission line corridor and performed determinations of the proposed project's impact.

### **Atlantic Coast Pipeline, Phase I Report, Dominion Transmission Inc., 2015 Architectural Historian**

Ms. Voisin George researched and drafted the Phase I Report's statewide historic context sections for project areas in Virginia, West Virginia, and North Carolina.

### **Pre-execution Cultural Resource Survey, Enbridge 2014-2015, Architectural Historian**

Ms. Voisin George conducted field survey of previously-listed historic resources and the identification of previously-undocumented historic structures within the project's potential APE, in consultation with the Wisconsin Historical Society (Wisconsin's State Historic Preservation Office), and performed an assessment of project effects.

### **Los Angeles Regional Interoperable Communications System, Phase I, ASM Affiliates for LA-RICS Joint Powers Authority, 2013 Architectural Historian**

Ms. Voisin George conducted field assessments of previously-listed historic resources and sites within the APE of potential emergency equipment installations across Los Angeles County, and performed assessments of visual impact for the installation of a system of

monopole equipment and lattice towers for a dedicated broadband emergency communications system.