

**APPENDIX B – RESOURCE FIGURES**

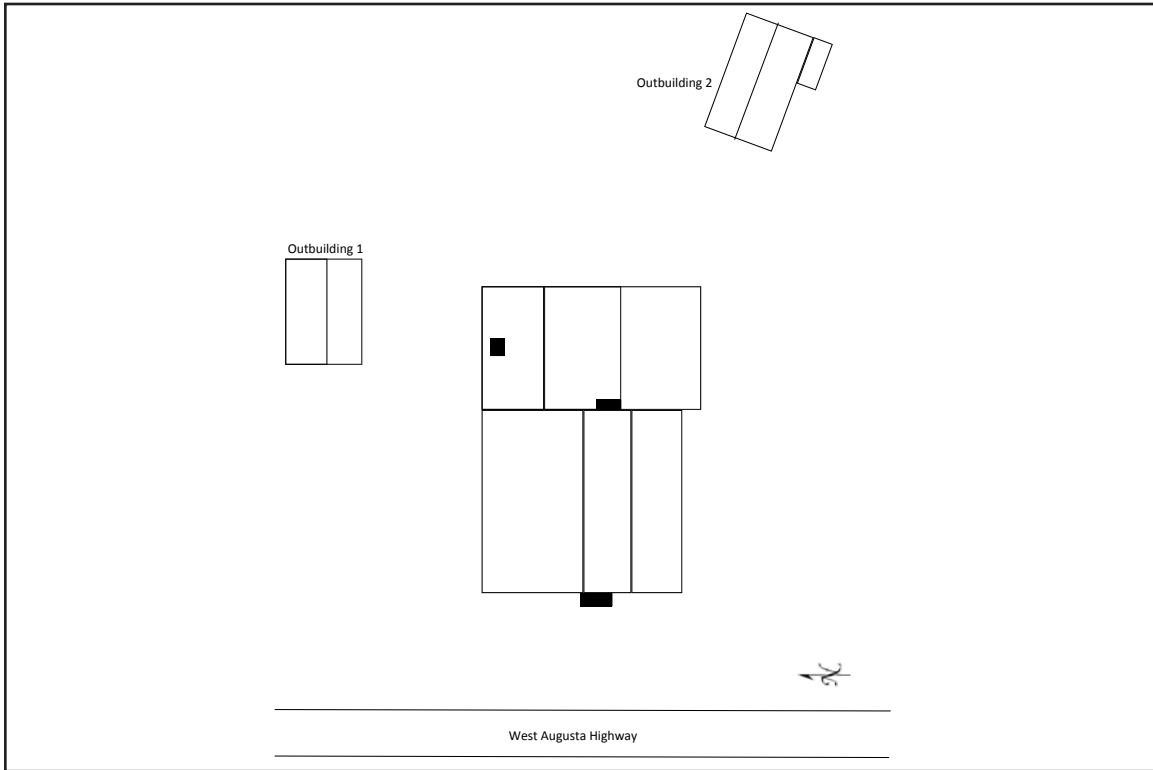


Figure 1. 007-0447, sketch map.



Figure 2. 007-0447, facing north.





Figure 3. 007-0447, facing east.



Figure 4. 007-0447. Outbuilding 1, facing southeast.



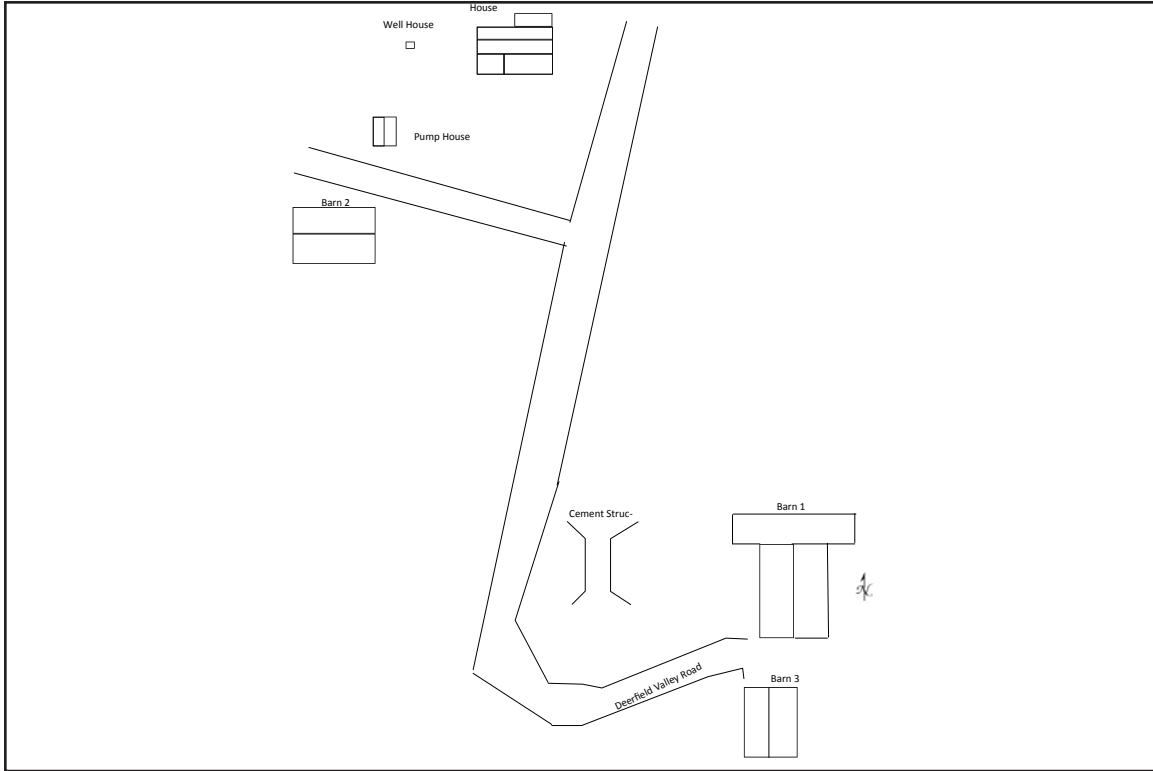


Figure 5. 007-0463, sketch map.



Figure 6. 007-0463, facing west.





Figure 7. 007-0463, Barn 1, facing south.



Figure 8. 007-0463, Barn 2, facing northeast.



Figure 9. 007-0463, Barn 3, facing southeast.

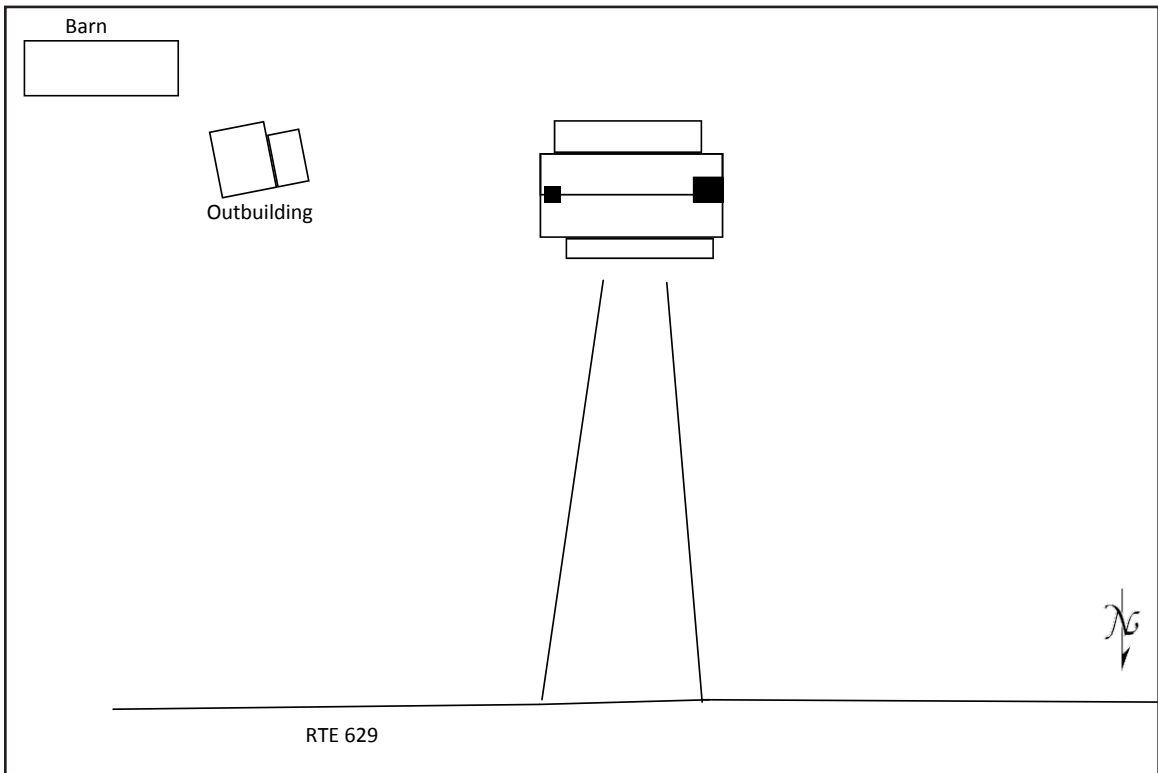


Figure 10. 007-0467, sketch map.





Figure 11. 007-0467, house, facing southeast.



Figure 12. 007-0467, house, facing south.





Figure 13. 007-0467, chicken house, facing southwest.

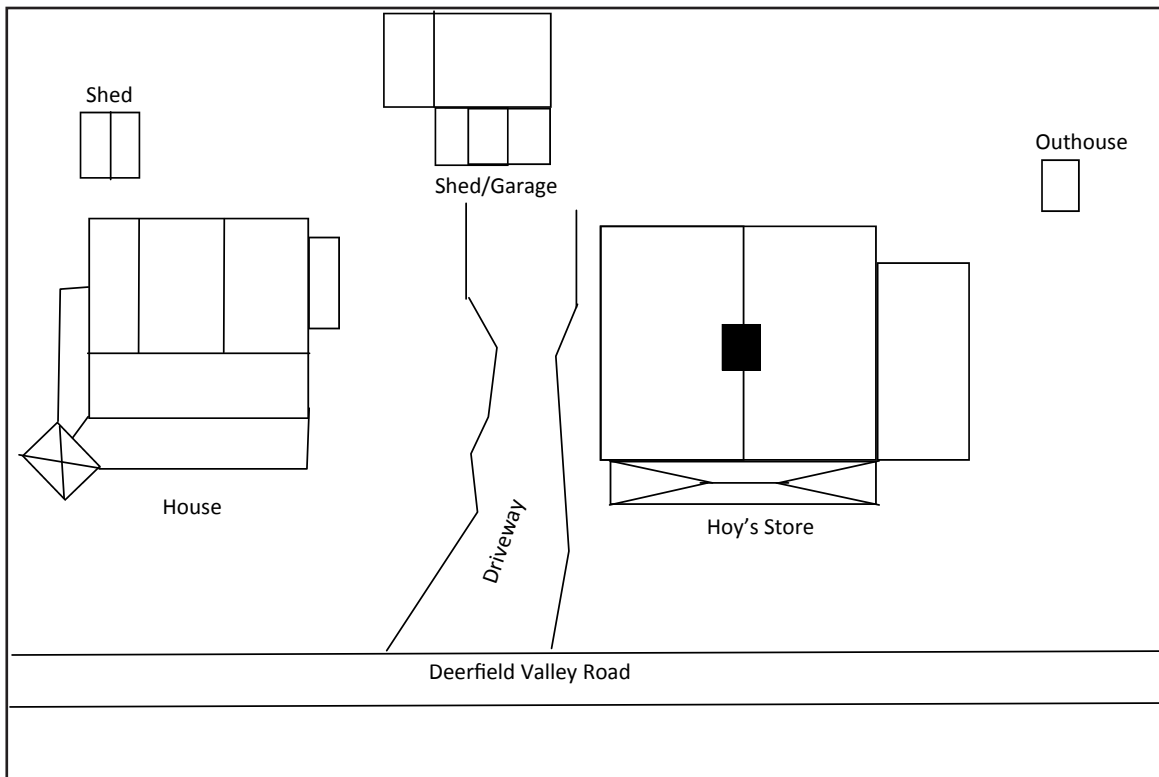


Figure 14. 007-0476, sketch map.





Figure 15. 007-0476, store, facing south.



Figure 16. 007-0476, store, facing southwest.



Figure 17. 007-0476, store, facing southeast.



Figure 18. 007-0476, dwelling house, facing southwest.





Figure 19. 007-0476, dwelling house, facing southwest.



Figure 20. 007-0476, dwelling house, facing south-southwest.





Figure 21. 007-0476, garage and shed, facing southeast.



Figure 22. 007-0476, outhouse, facing southwest.



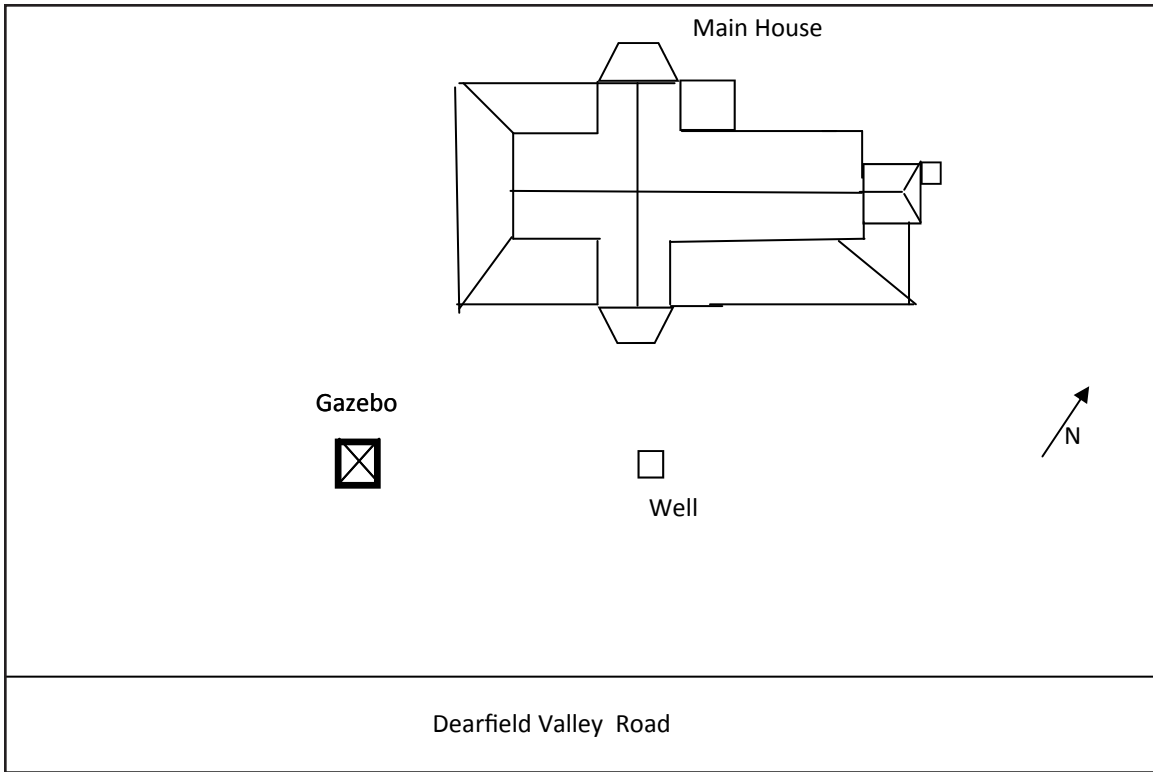


Figure 23. 007-0487, sketch map.



Figure 24. 007-0487, house, facing north.





Figure 25. 007-0487, house, facing east.



Figure 26. 007-0487, gable details on house, facing southeast.





Figure 27. 007-0487, gazebo, facing east.

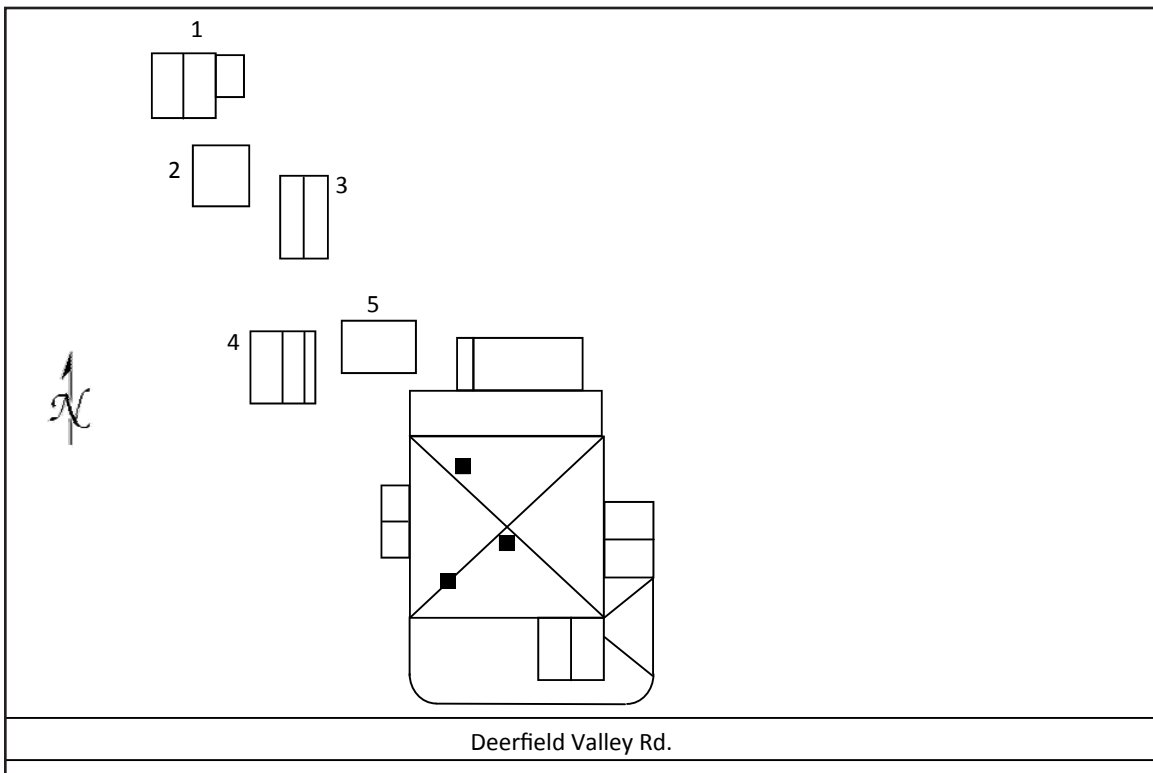


Figure 28. 007-0490, sketch map.



Figure 29. 007-0490, facing northwest.



Figure 30. 007-0490, facing east.





Figure 31. 007-0490, sheds, facing northeast.

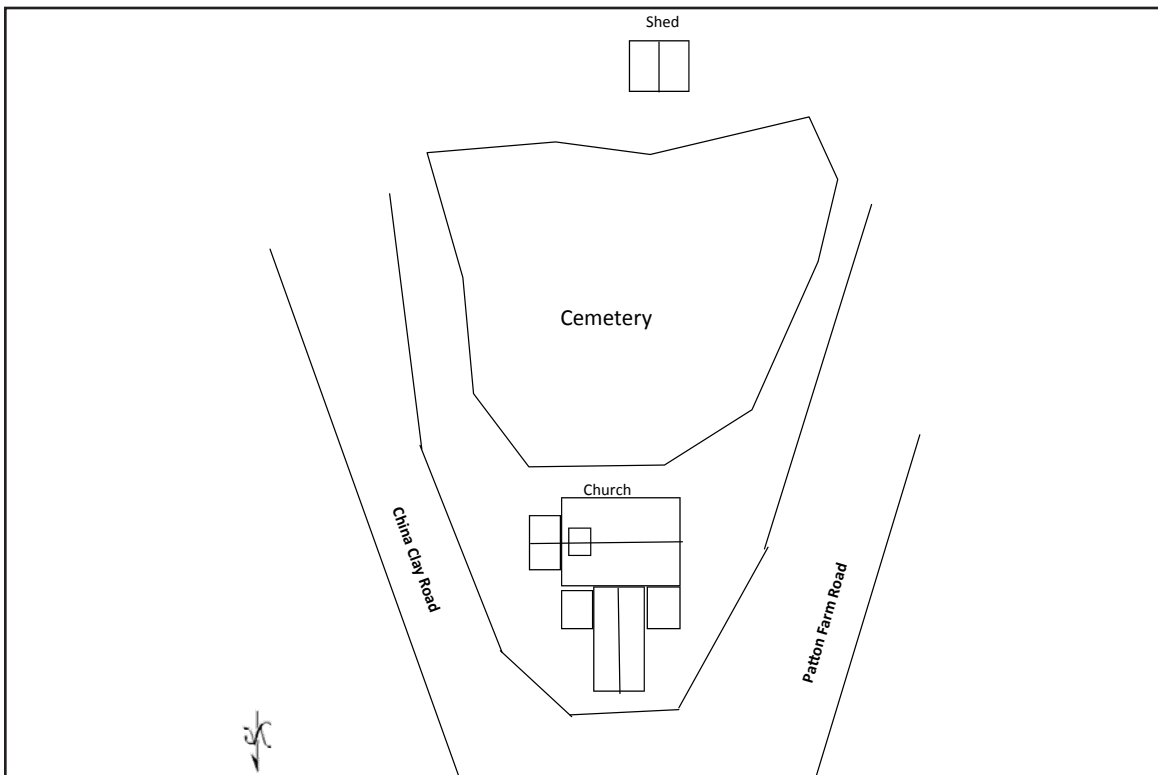


Figure 32. 007-0863, sketch map.



Figure 33. 007-0863, facing southeast.



Figure 34. 007-0863, church, facing southwest.





Figure 35. 007-0863, cemetery, facing southeast.

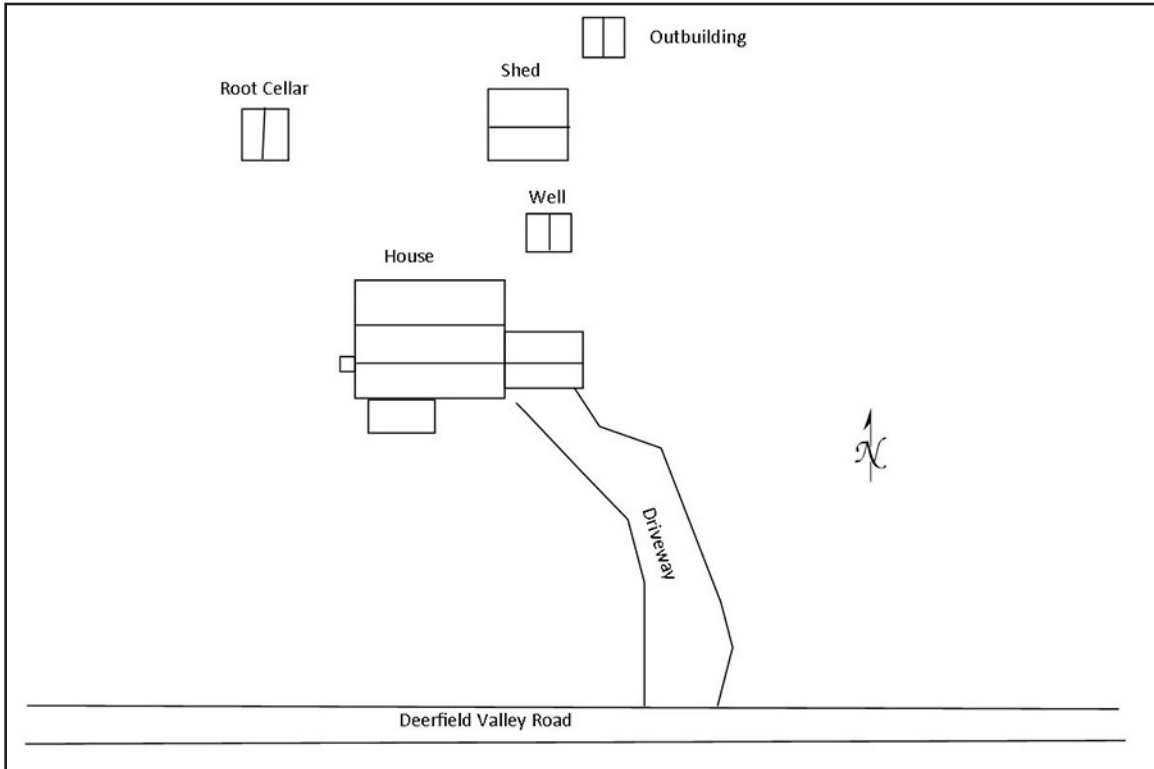


Figure 36. 007-5703, sketch map.





Figure 37. 007-5703, facing northeast.



Figure 38. 007-5703, facing northwest.





Figure 39. 007-5703, outbuildings, facing northwest.

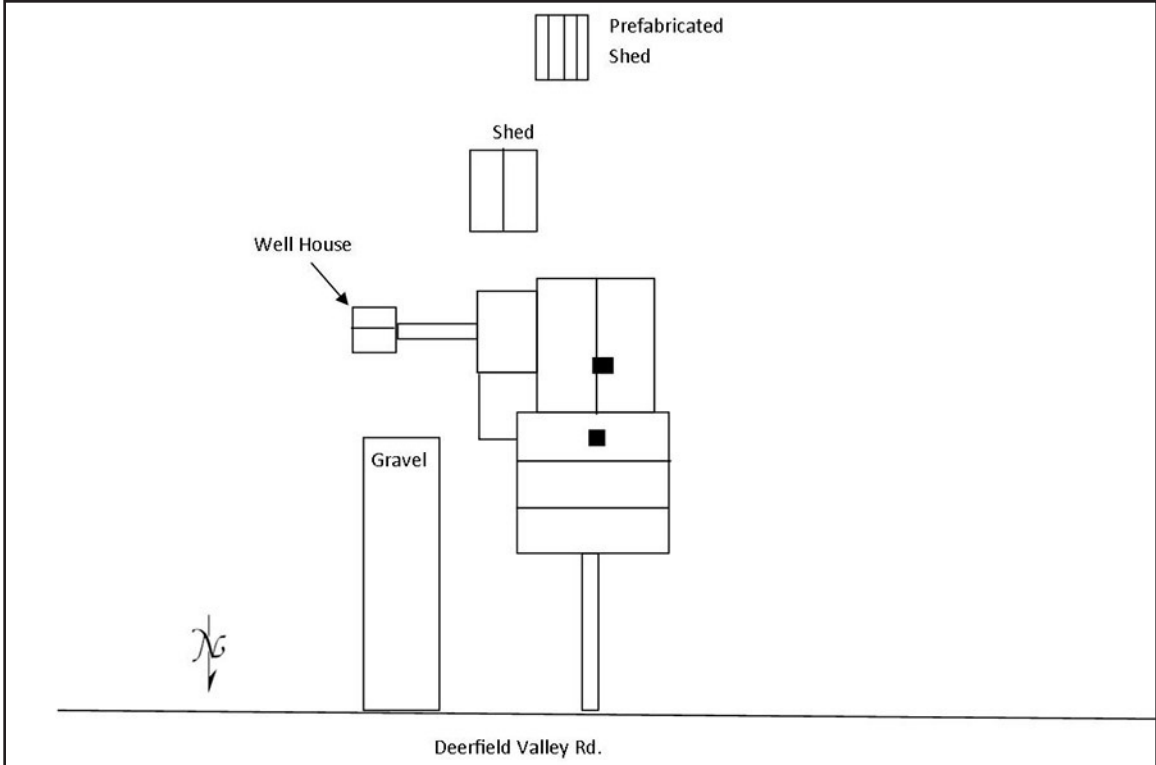


Figure 40. 007-5704, sketch map.



Figure 41. 007-5704, house, facing southeast.



Figure 42. 007-5704, house and outbuildings, facing southwest.



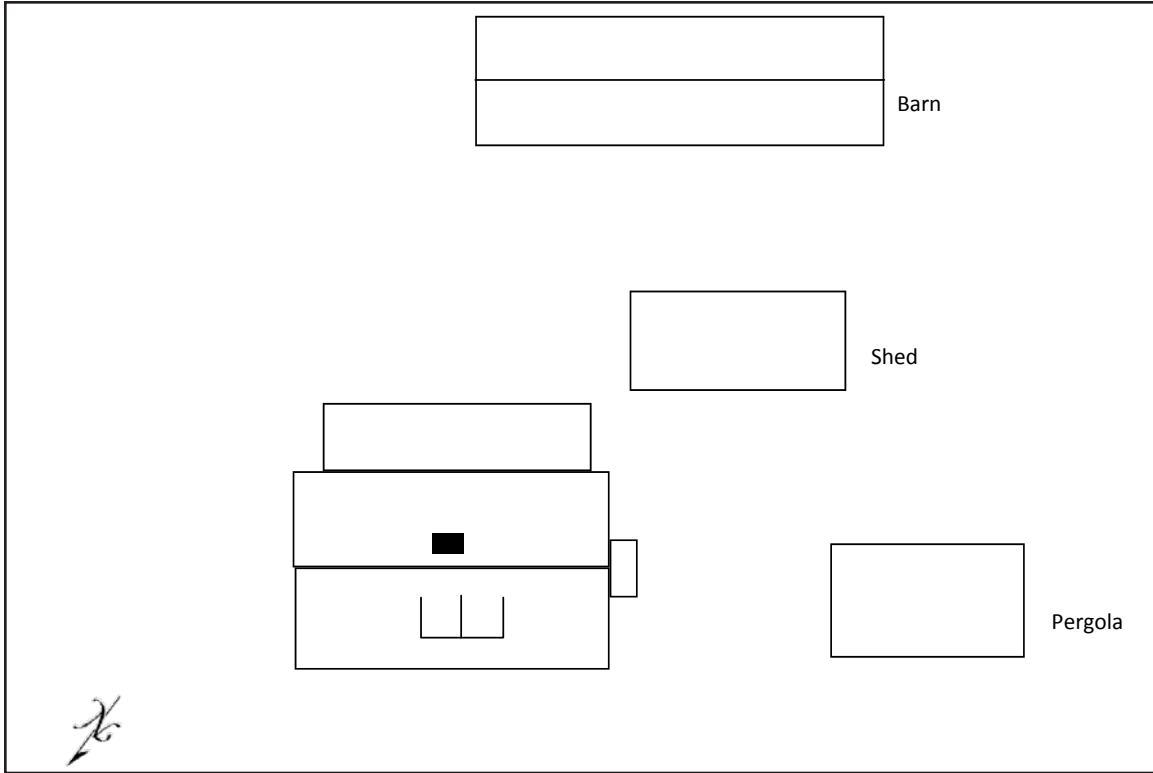


Figure 43. 007-5705, sketch map.



Figure 44. 007-5705, facing southeast.





Figure 45. 007-5705, facing east



Figure 46. 007-5705, facing east.





Figure 47. 007-5705, facing south-southeast.

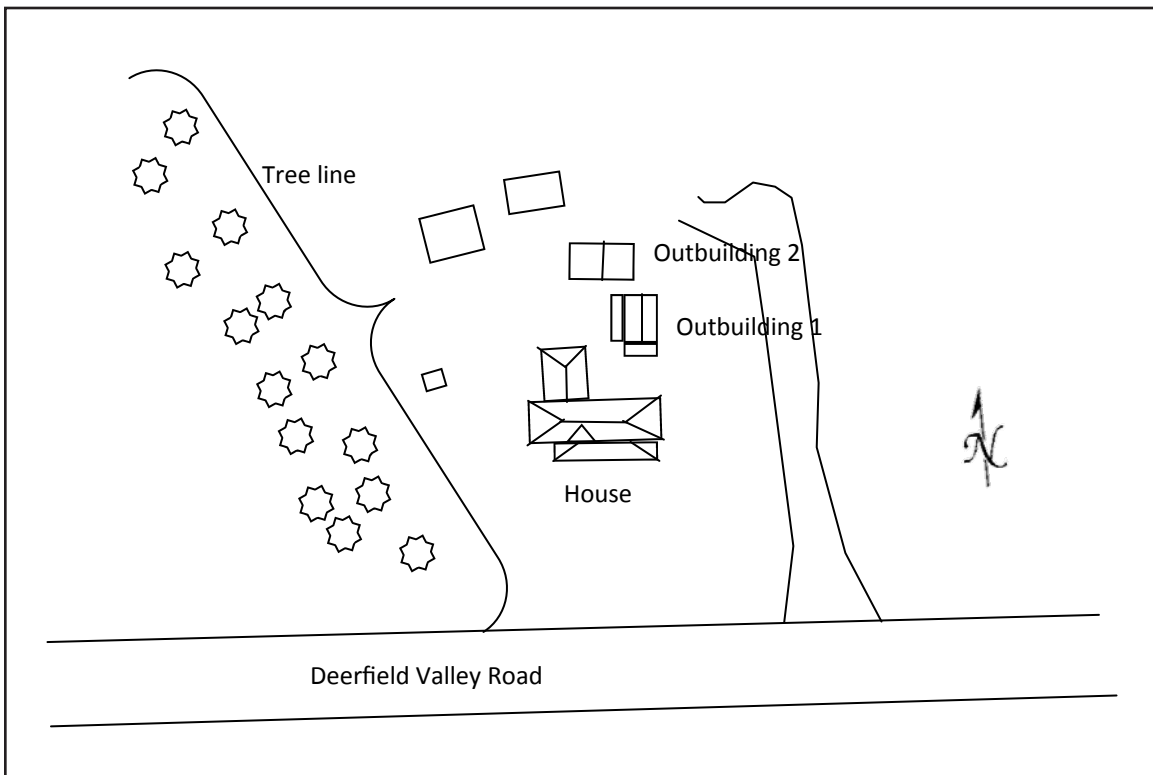


Figure 48. 007-5706, sketch map.





Figure 49. 007-5706, facing northwest.



Figure 50. 007-5706, facing northwest.





Figure 51. 007-5706, outbuilding, facing west.

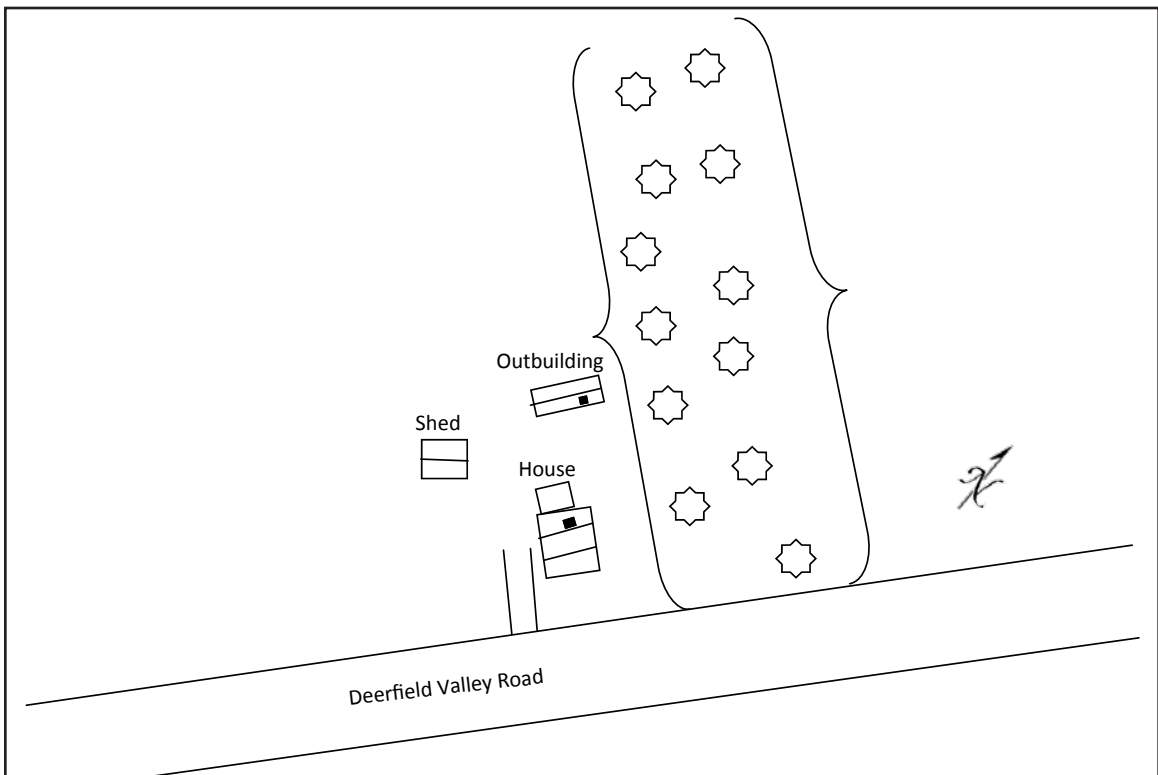


Figure 52. 007-5707, sketch map.





Figure 53. 007-5707, facing southeast.



Figure 54. 007-5707, garage, facing south.



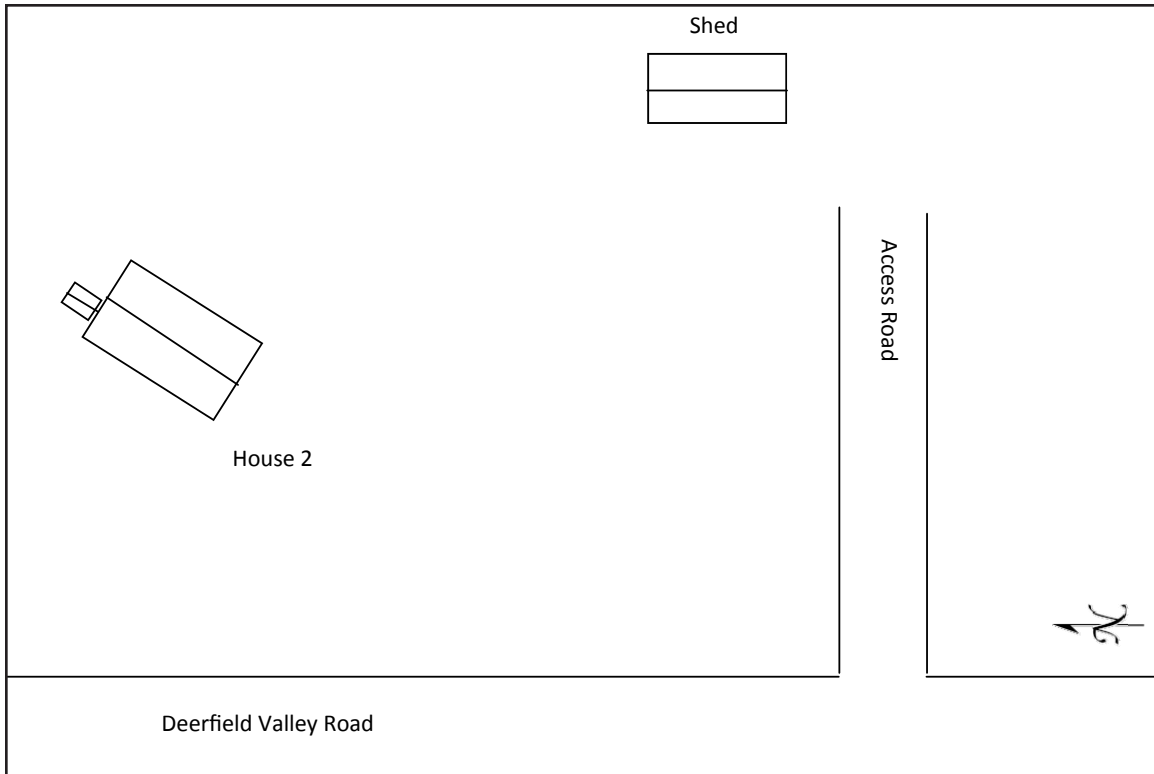


Figure 55. 007-5708, sketch map.



Figure 56. 007-5708, facing south-southeast.



Figure 57. 007-5708, facing south.

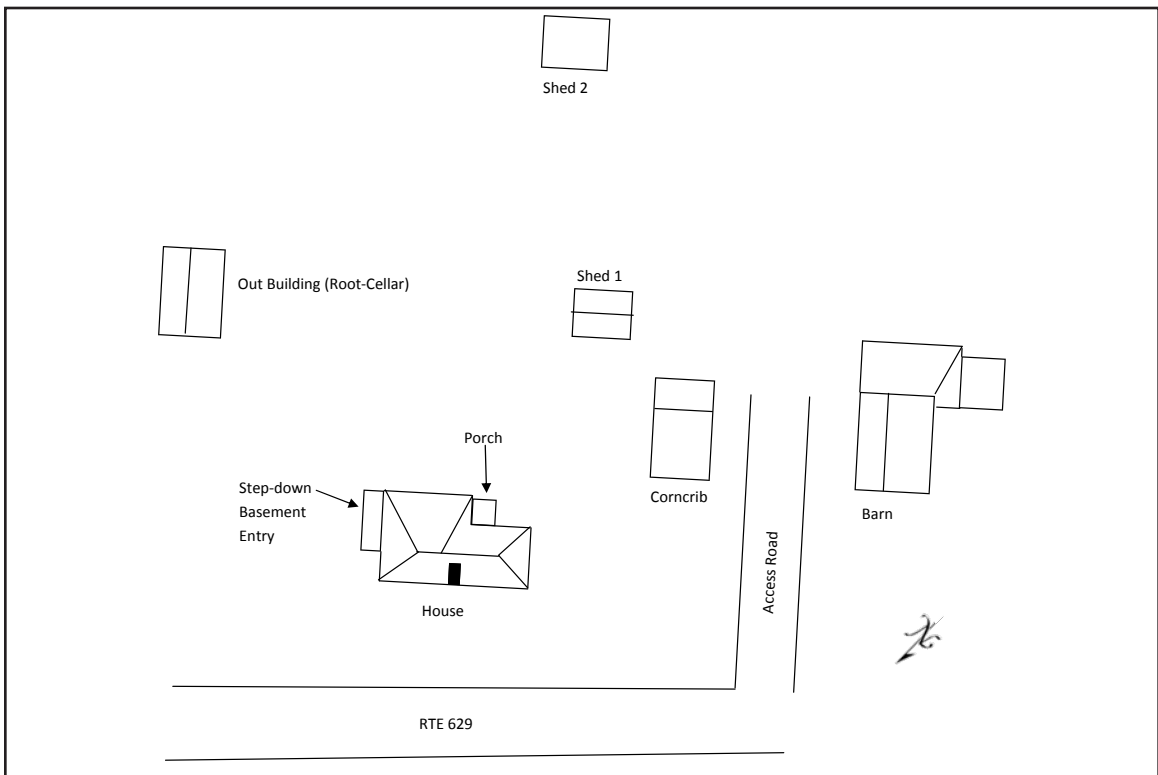


Figure 58. 007-5709 sketch map.





Figure 59. 007-5709, facing south.



Figure 60. 007-5709, facing east.





Figure 61. 007-5709, facing north.



Figure 62. 007-5709, Outbuilding 1, facing southeast.





Figure 63. 007-5709, Outbuilding 2, facing southeast.



Figure 64. 007-5709, Outbuilding 3, facing southwest.





Figure 65. 007-5709, Outbuilding 4, facing southwest.



Figure 66. 007-5709, corn crib and barn, facing east.





Figure 67. 007-5709, barn, facing south-southeast.

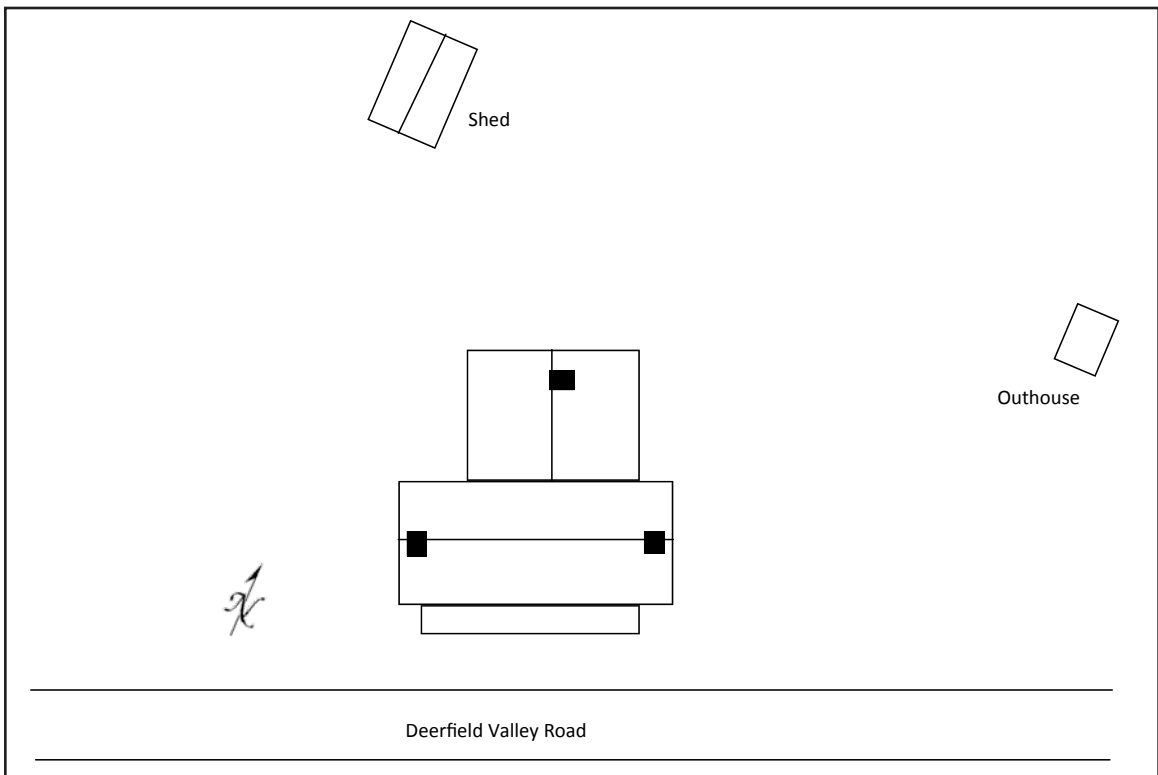


Figure 68. 007-5710, sketch map.





Figure 69. 007-5710, facing northwest.



Figure 70. 007-5710, facing north.





Figure 71. 007-5710, outhouse, facing northwest.

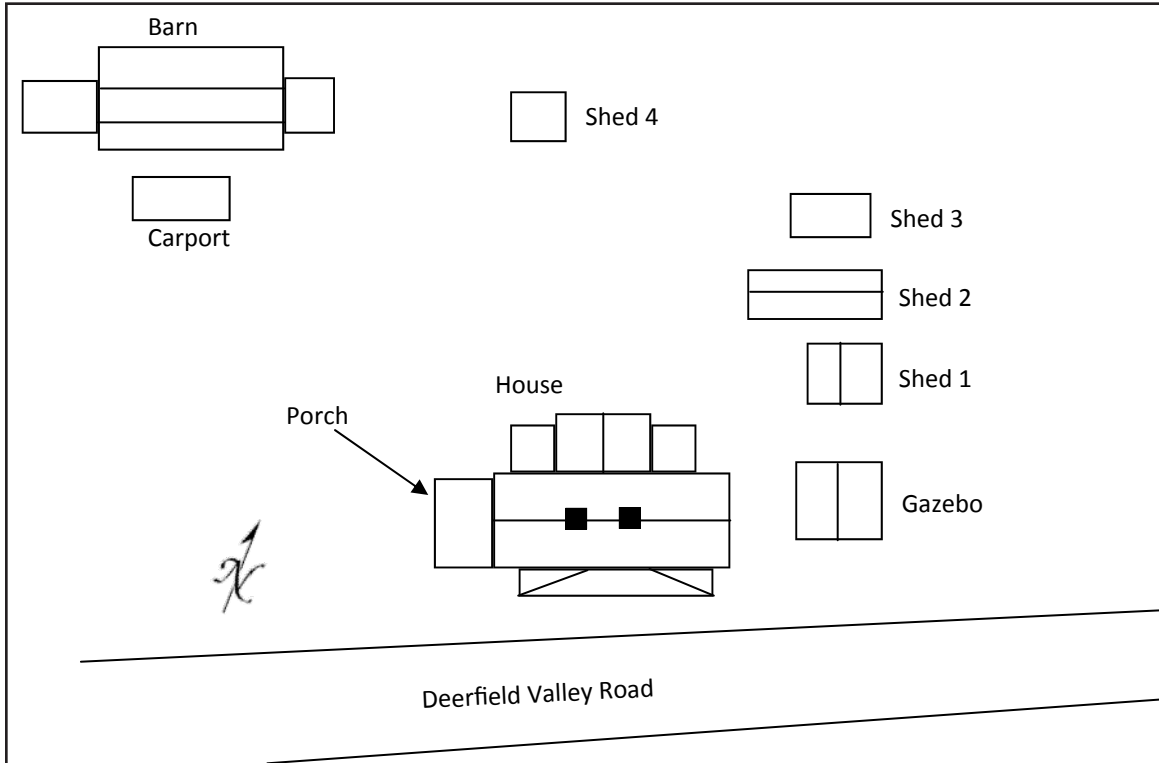


Figure 72. 007-5711, sketch map.





Figure 73. 007-5711, facing northwest.



Figure 74. 007-5711, facing north-northeast.





Figure 75. 007-5711, carport, barn, and Outbuilding 3, facing northeast.



Figure 76. 007-5711, carport, barn, and Outbuilding 3, facing northwest.





Figure 77. 007-5711, Outbuildings 4-6, facing west.



Figure 78. 007-5711, Outbuildings 4-6, facing west.



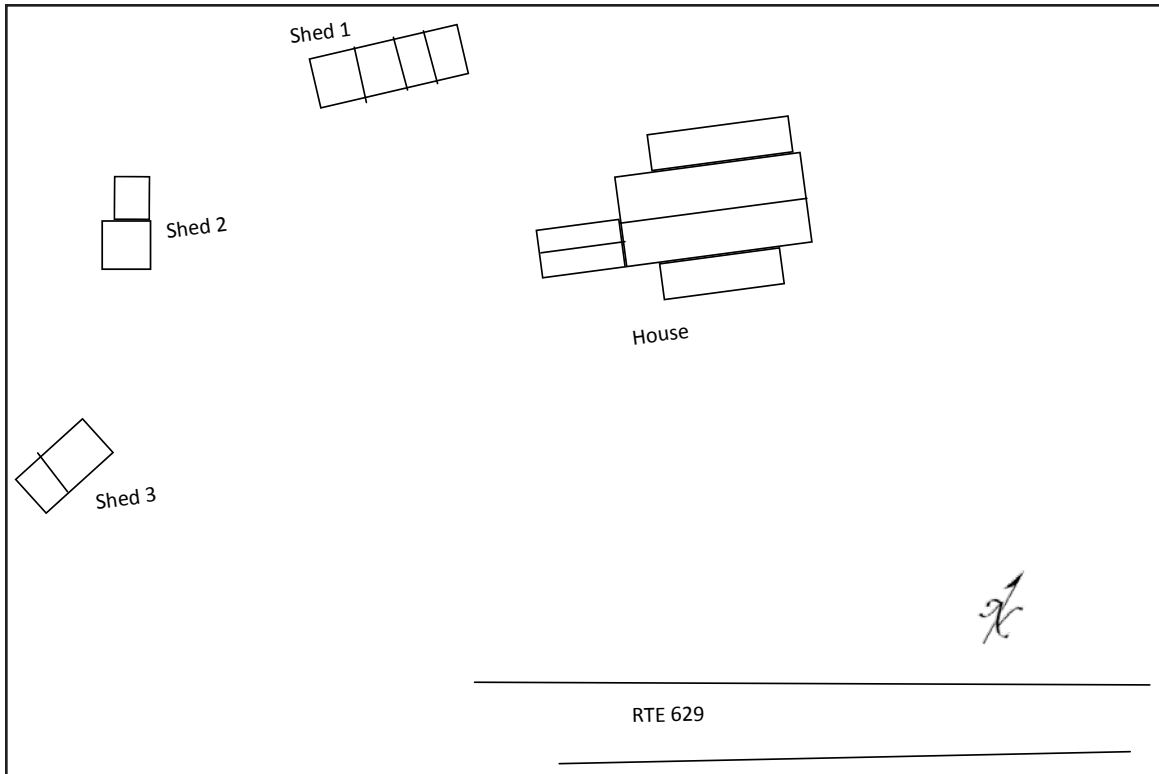


Figure 79. 007-5712, sketch map.



Figure 80. 007-5712, facing northwest.



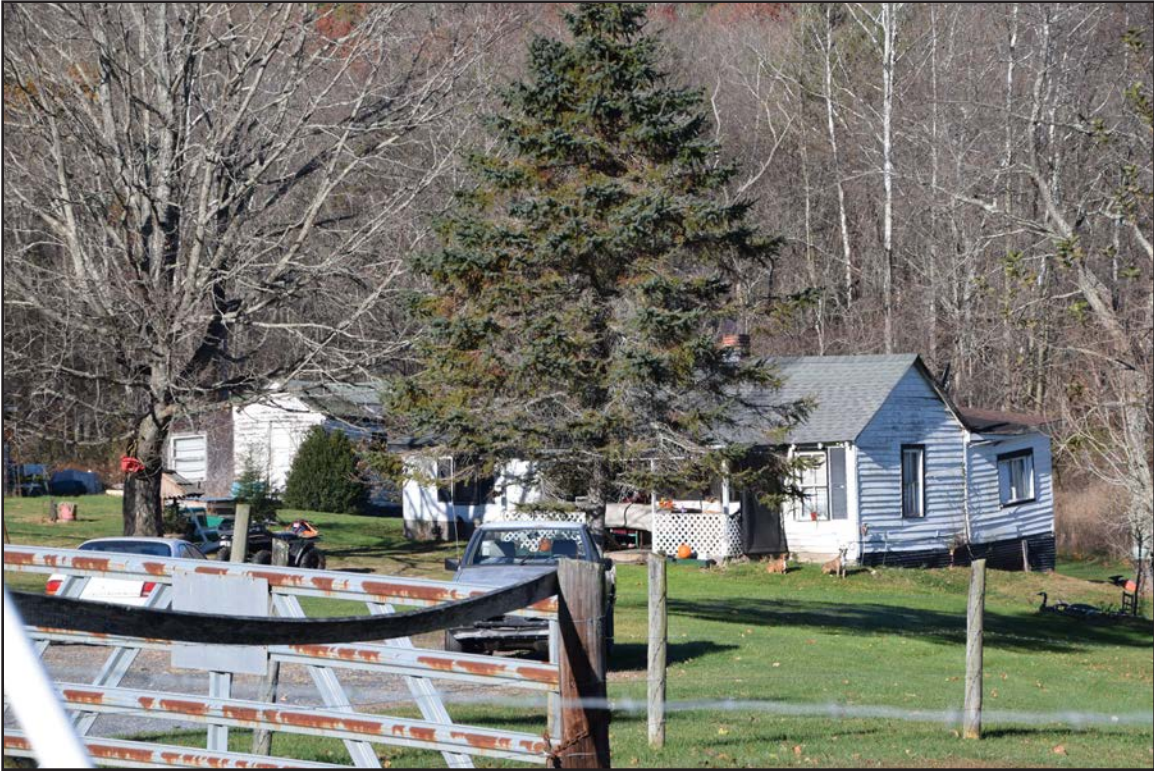


Figure 81. 007-5712, facing west-southwest.



Figure 82. 007-5712, Shed 1, facing west.





Figure 83. 007-5712 Shed 2 and Shed 3, facing west.

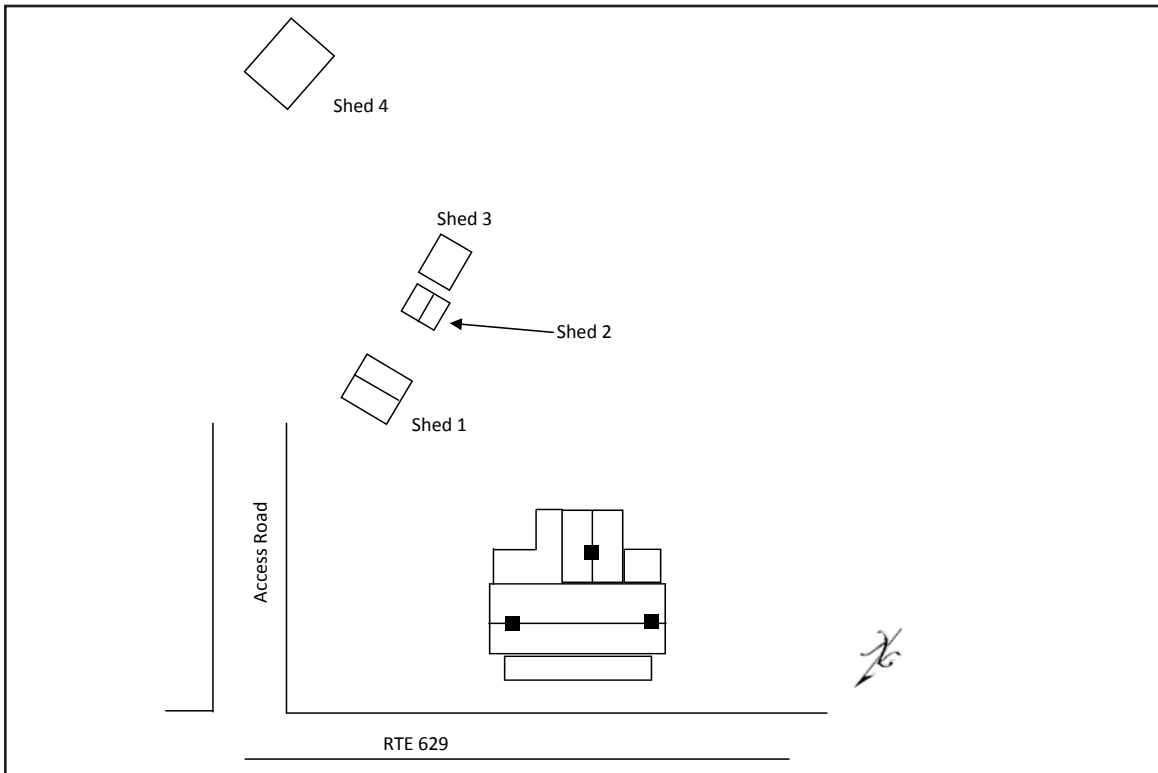


Figure 84. 007-5713, sketch map.





Figure 85. 007-5713, house, facing southeast.



Figure 86. 007-5713, facing northwest.





Figure 87. 007-5713, outbuildings, facing south.

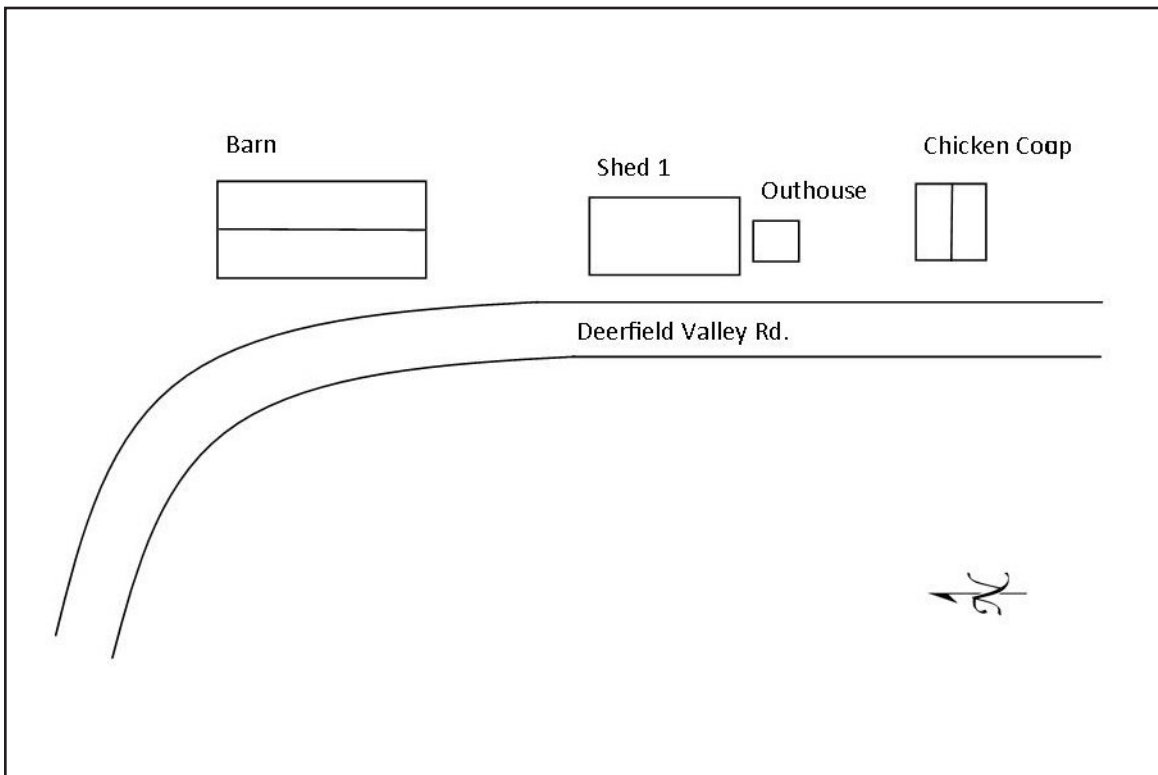


Figure 88. 007-5714, sketch map.





Figure 89. 007-5714, barn, facing east.



Figure 90. 007-5714, shed, facing east.





Figure 91. 007-5714, shed, facing southeast.

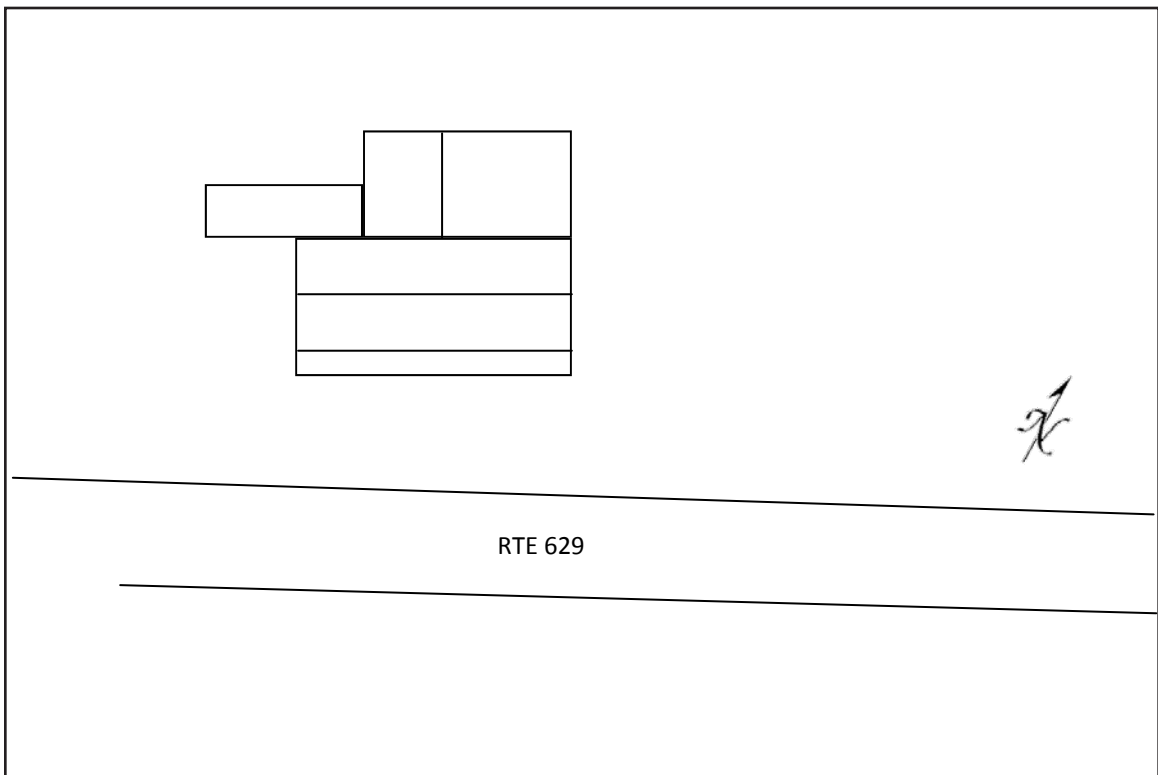


Figure 92. 007-5715, sketch map.





Figure 93. 007-5715, house, facing northwest.



Figure 94. 007-5715, house, facing northeast.





Figure 95. 007-5715, garage, facing west.

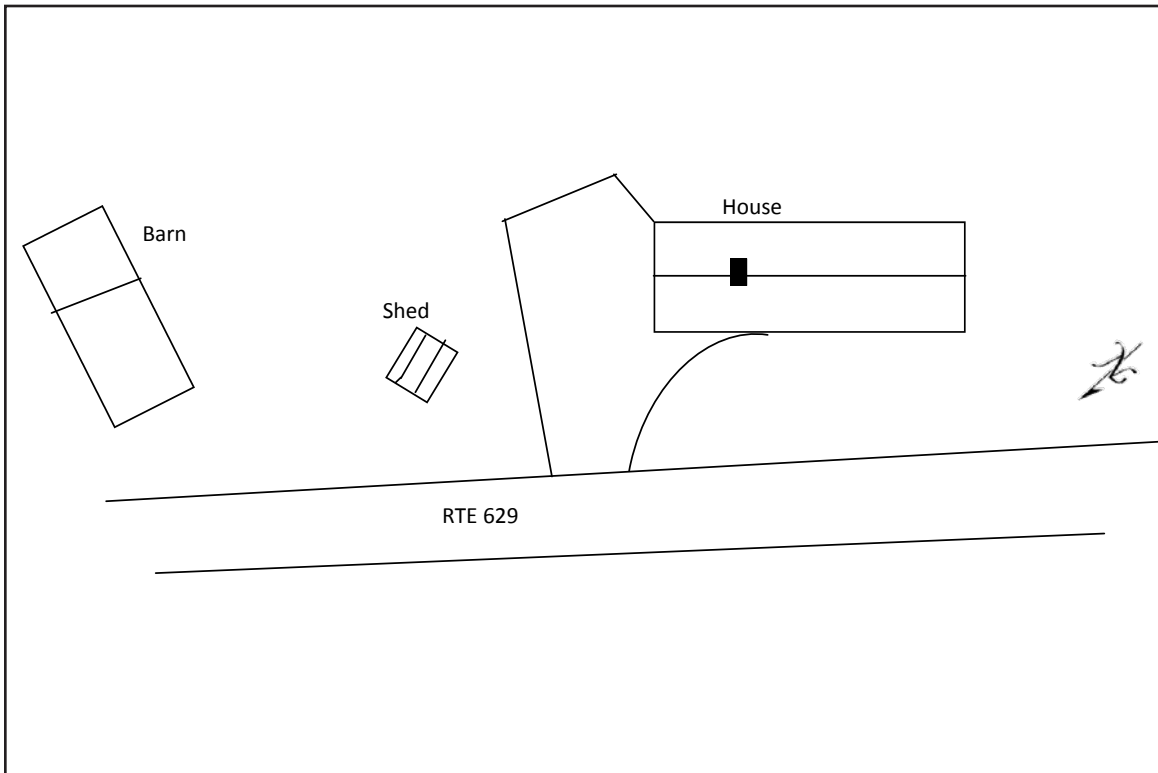


Figure 96. 007-5716, sketch map.





Figure 97. 007-5716, facing southwest.



Figure 98. 007-5716, facing south.





Figure 99. 007-5716, facing east



Figure 100. 007-5716, shed, facing southeast.





Figure 101. 007-5716, barn, facing east.

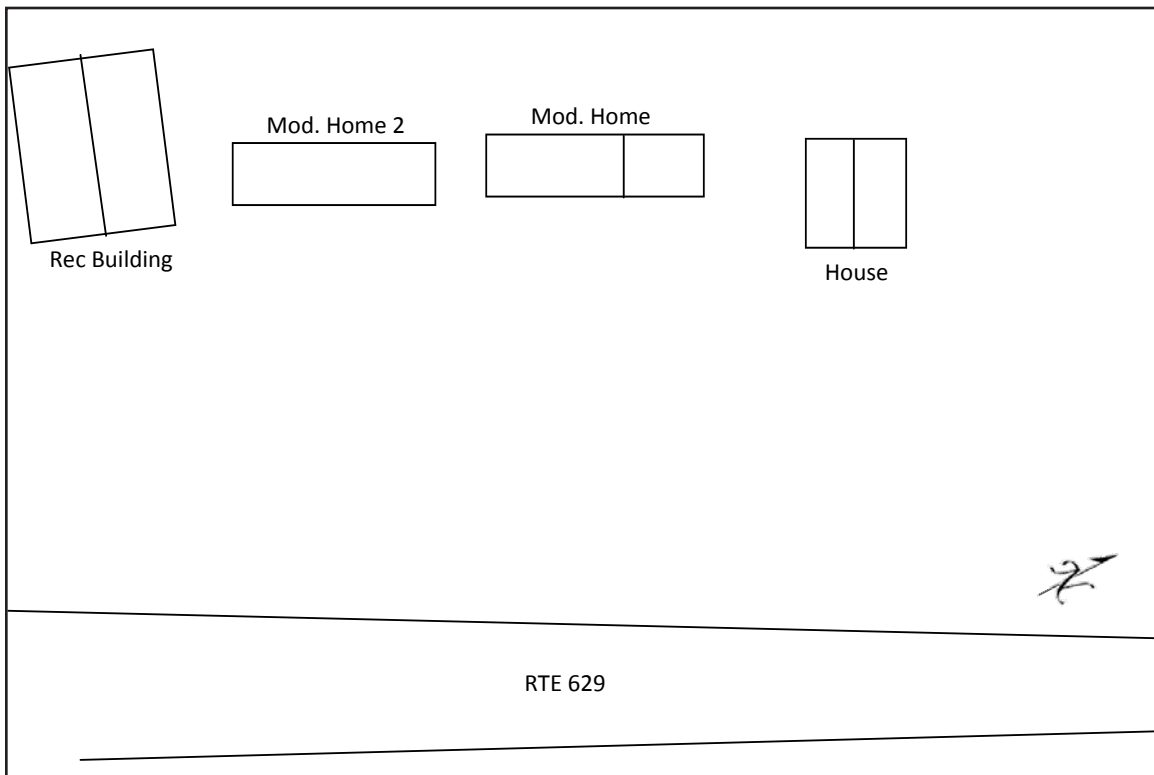


Figure 102. 007-5717, sketch map.





Figure 103. 007-5717, facing north.



Figure 104. 007-5717, facing northeast.





Figure 105. 007-5717, facing northeast.

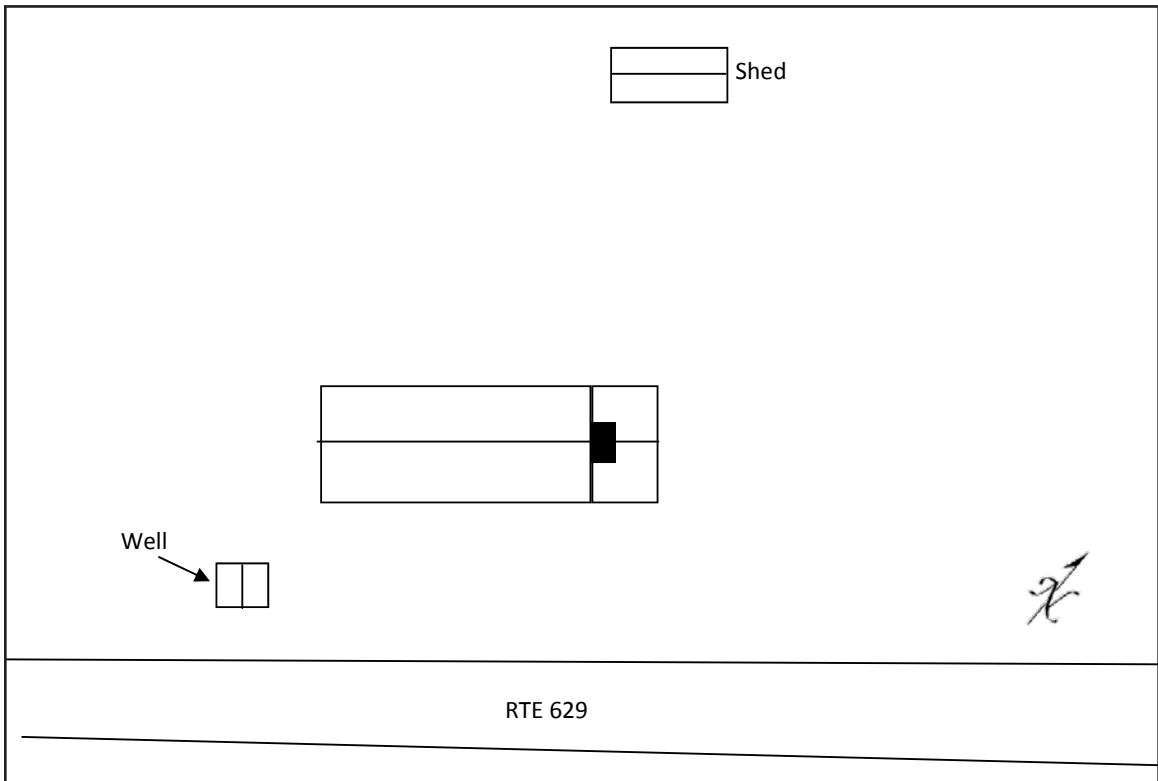


Figure 106. 007-5718, sketch map.





Figure 107. 007-5718, facing northwest.



Figure 108. 007-5718, facing north-northwest.





Figure 109. 007-5718, facing north



Figure 110. 007-5718, shed, facing northwest.



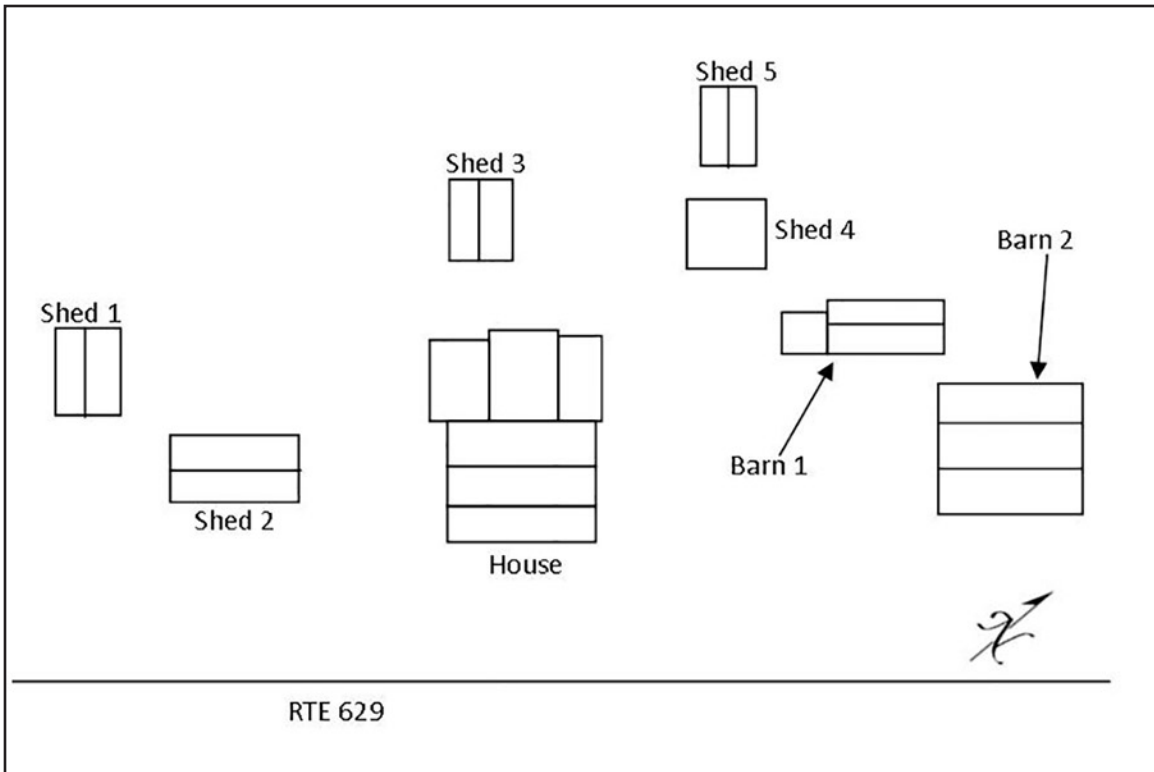


Figure 111. 007-5719, sketch map.



Figure 112. 007-5719, facing northwest.





Figure 113. 007-5719, facing southwest.

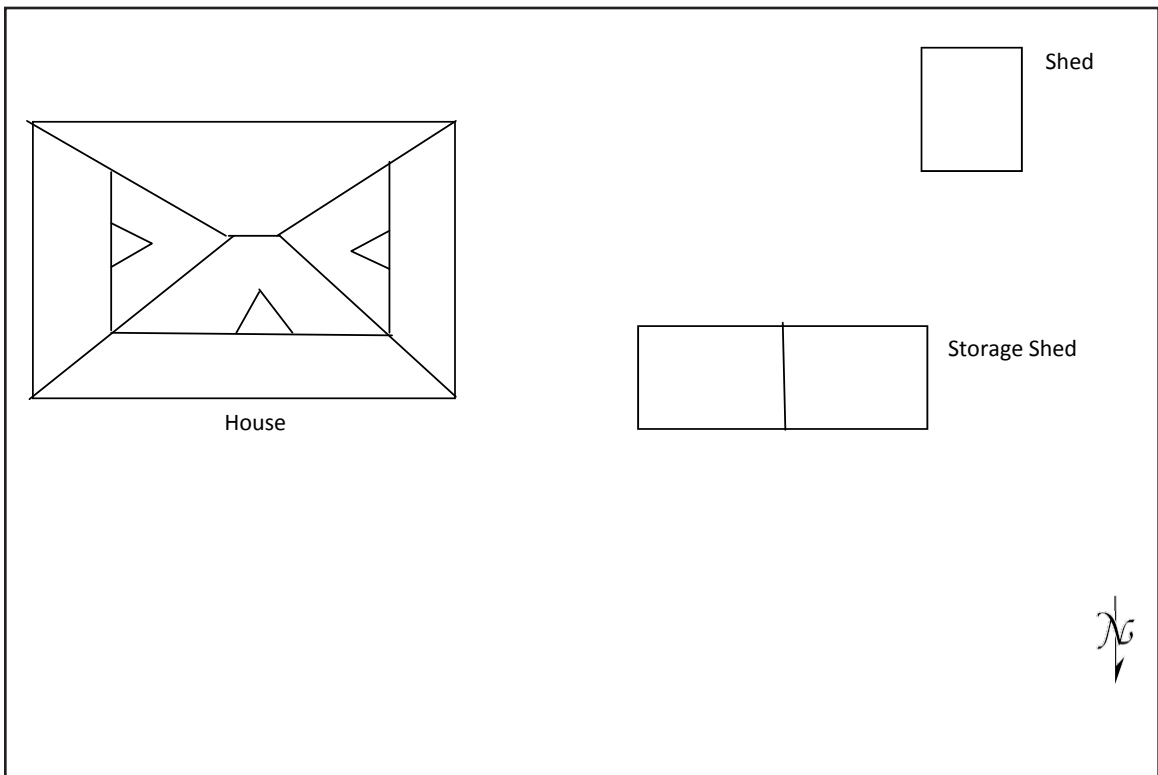


Figure 114. 007-5720 sketch map.





Figure 115. 007-5720, facing south.



Figure 116. 007-5720, facing southwest.





Figure 117. 007-5720, facing south.



Figure 118. 007-5720, facing south by southwest.



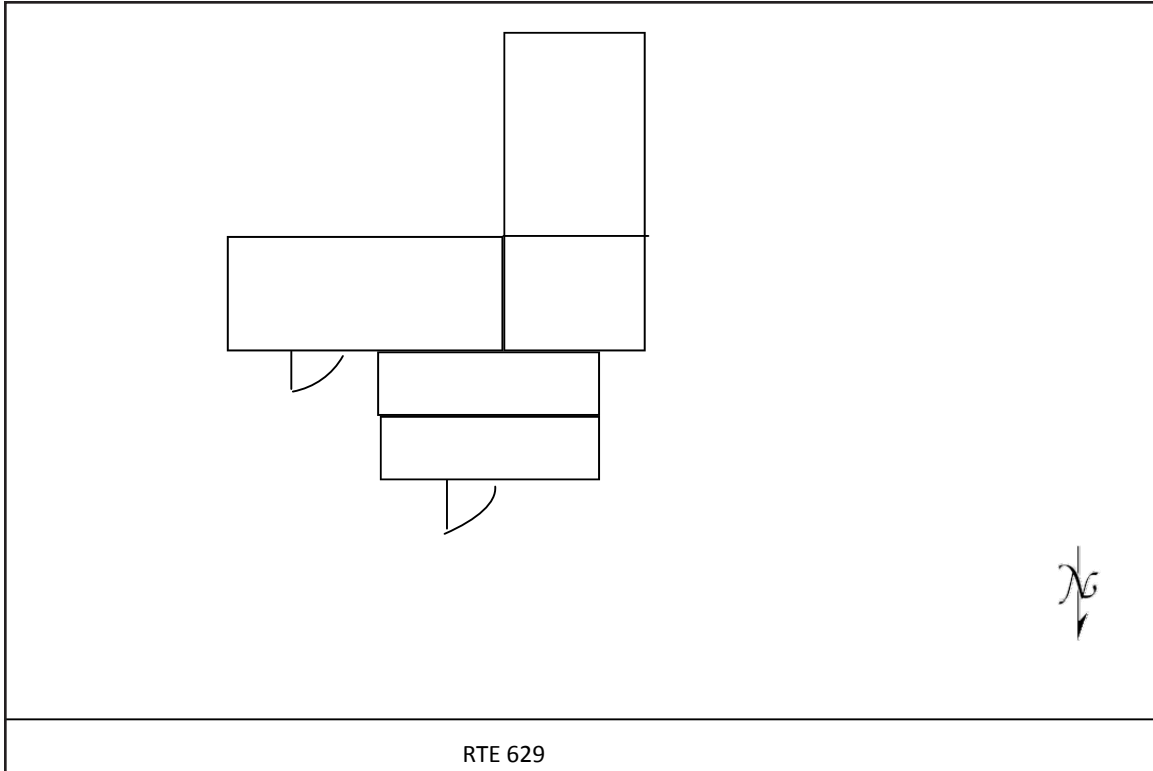


Figure 119. 007-5721, sketch map.



Figure 120. 007-5721, building, facing southeast.





Figure 121. 007-5721, building, facing southwest.

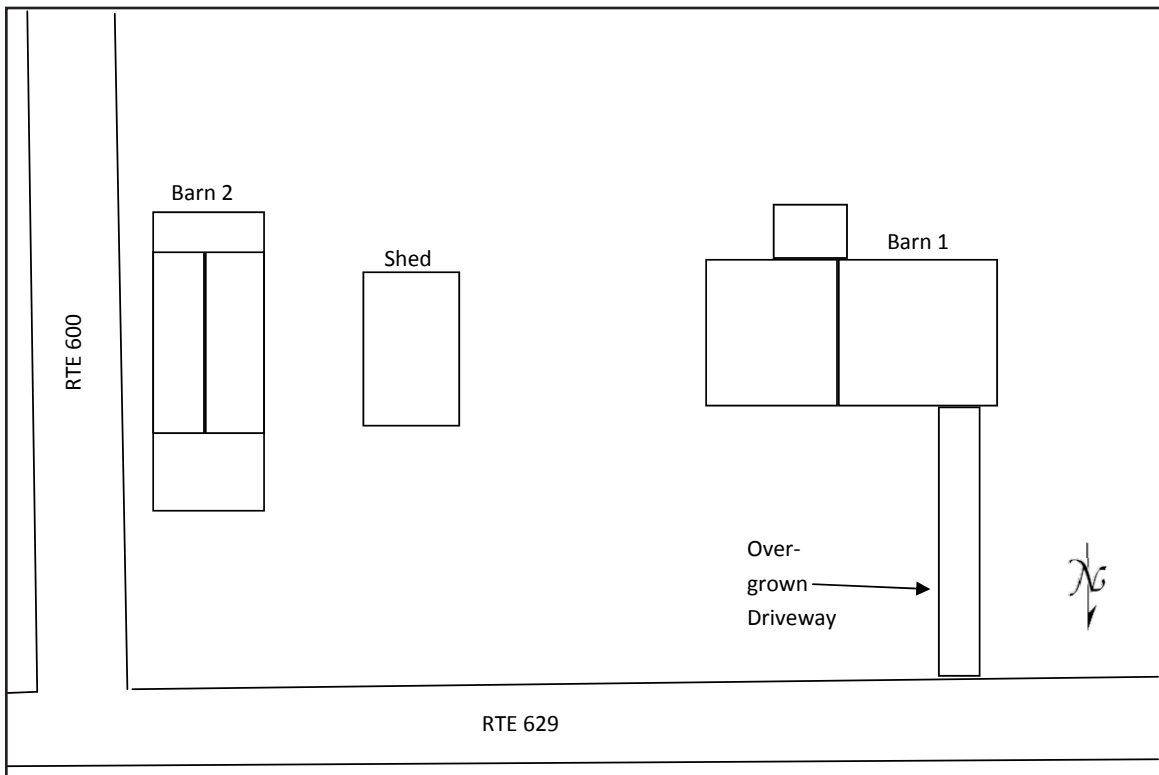


Figure 122. 007-5722, sketch map.





Figure 123. 007-5722, Barn 1, facing south.



Figure 124. 007-5722, Barn 2, facing southwest.



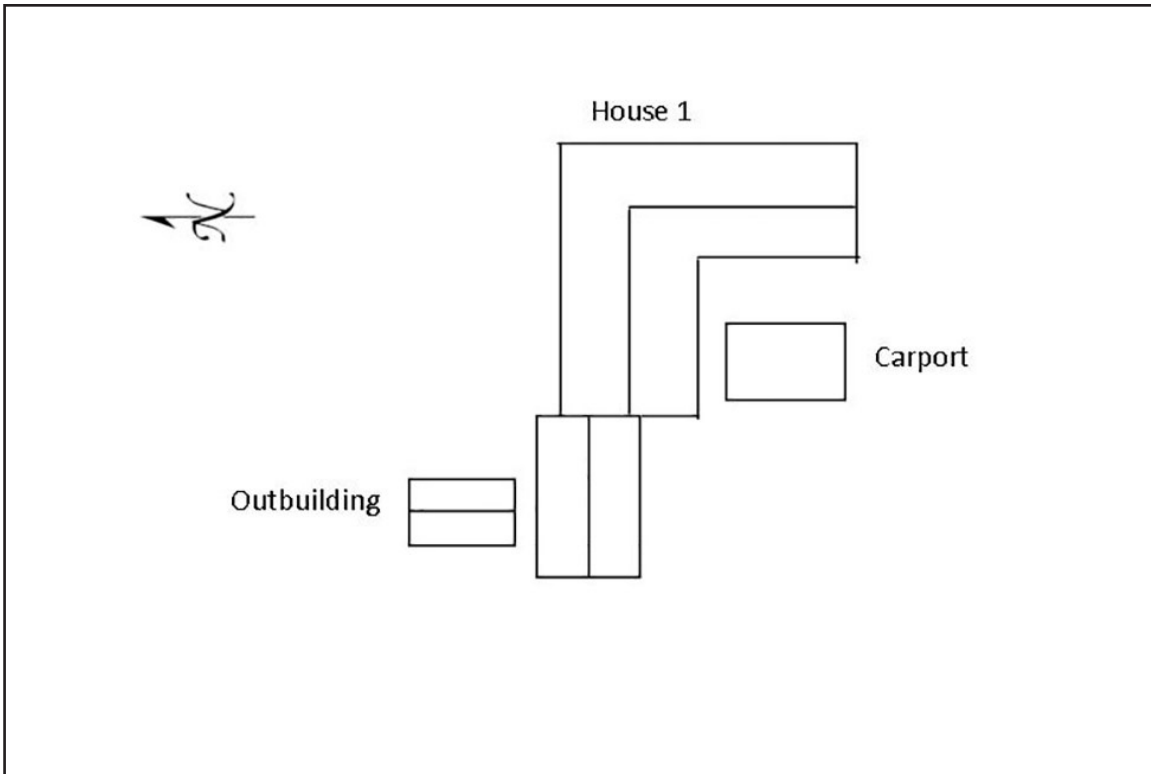


Figure 125. 007-5723, sketch map.



Figure 126. 007-5723, facing east.





Figure 127. 007-5723, facing south.



Figure 128. 007-5723, facing south-southeast.



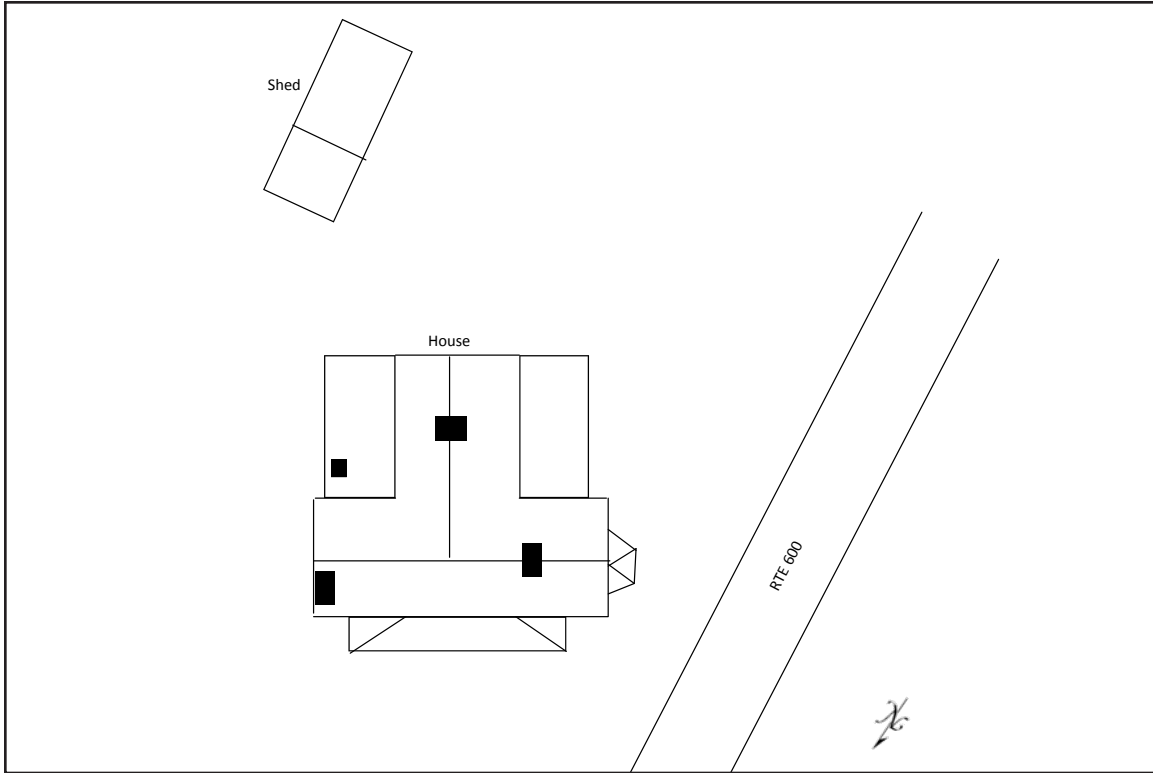


Figure 129. 007-5724, sketch map.



Figure 130. 007-5724, house, facing east.





Figure 131. 007-5724, facing north.



Figure 132. 007-5724, shed, facing northeast.



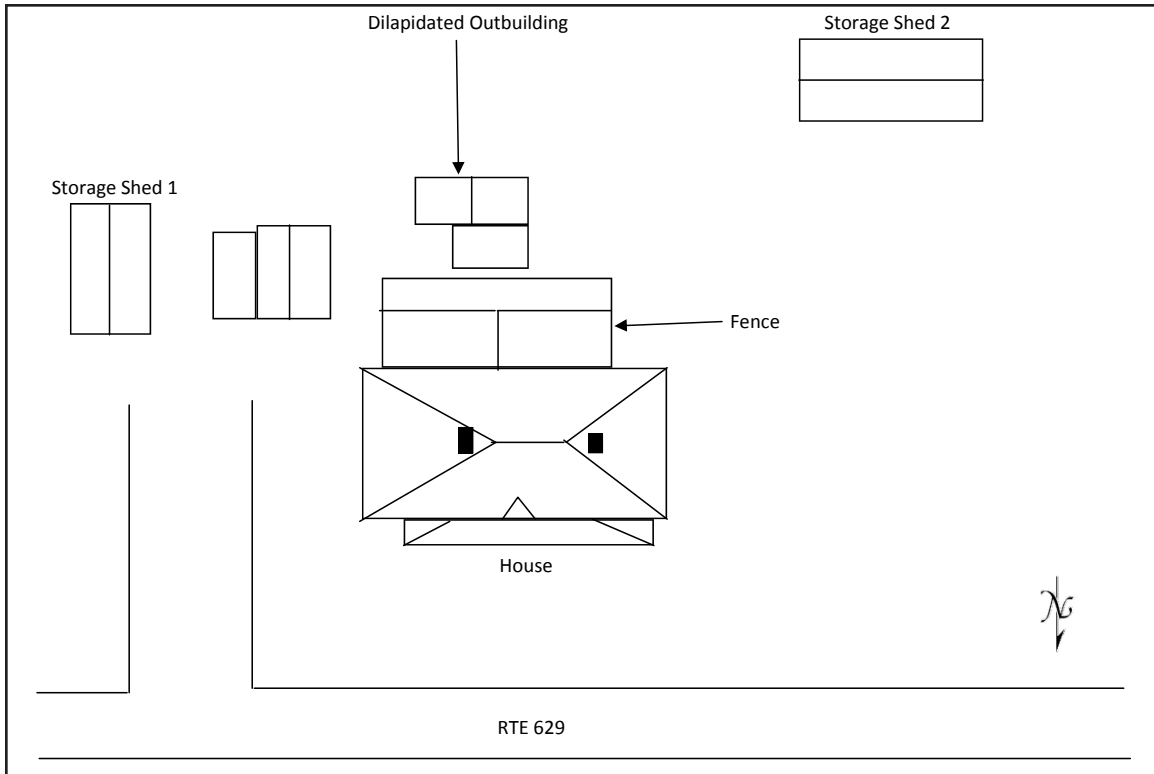


Figure 133. 007-5725, sketch map.



Figure 134. 007-5725, house, facing southeast.





Figure 135. 007-5725, house, facing south.



Figure 136. 007-5725, house and outbuildings, facing southwest.



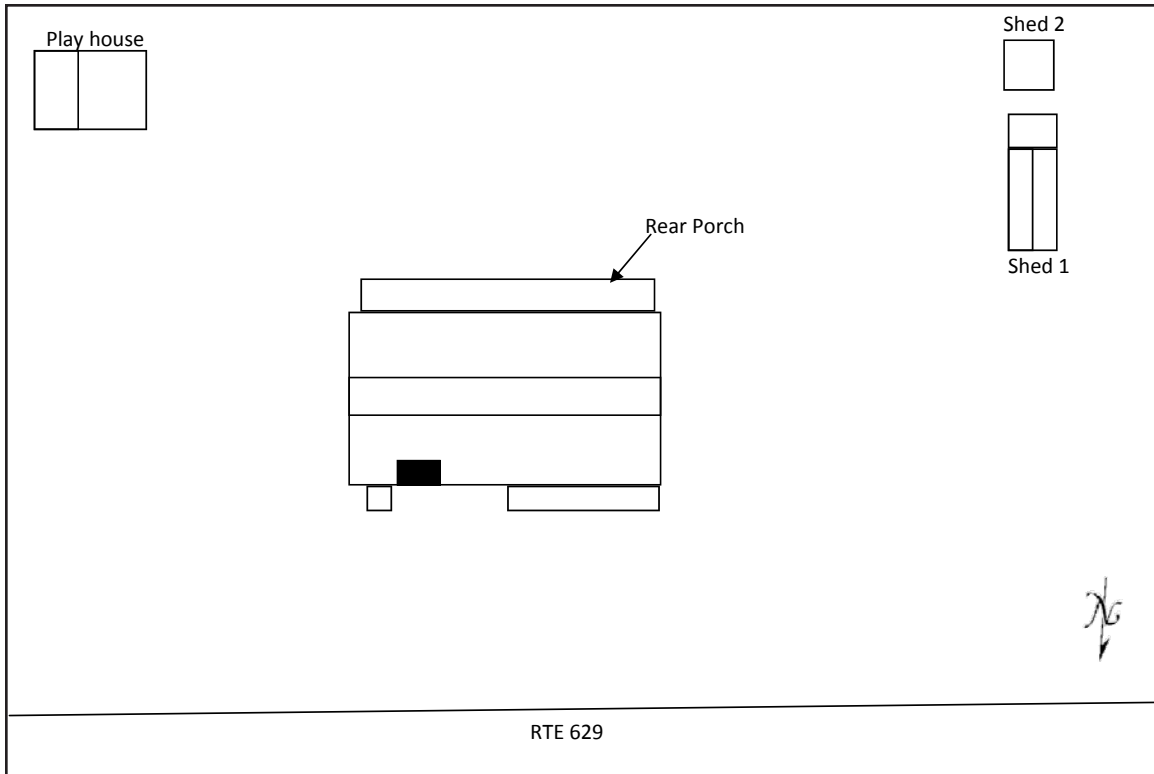


Figure 137. 007-5726, sketch map.



Figure 138. 007-5726, house, facing southeast.





Figure 139. 007-5726, house, facing southwest.

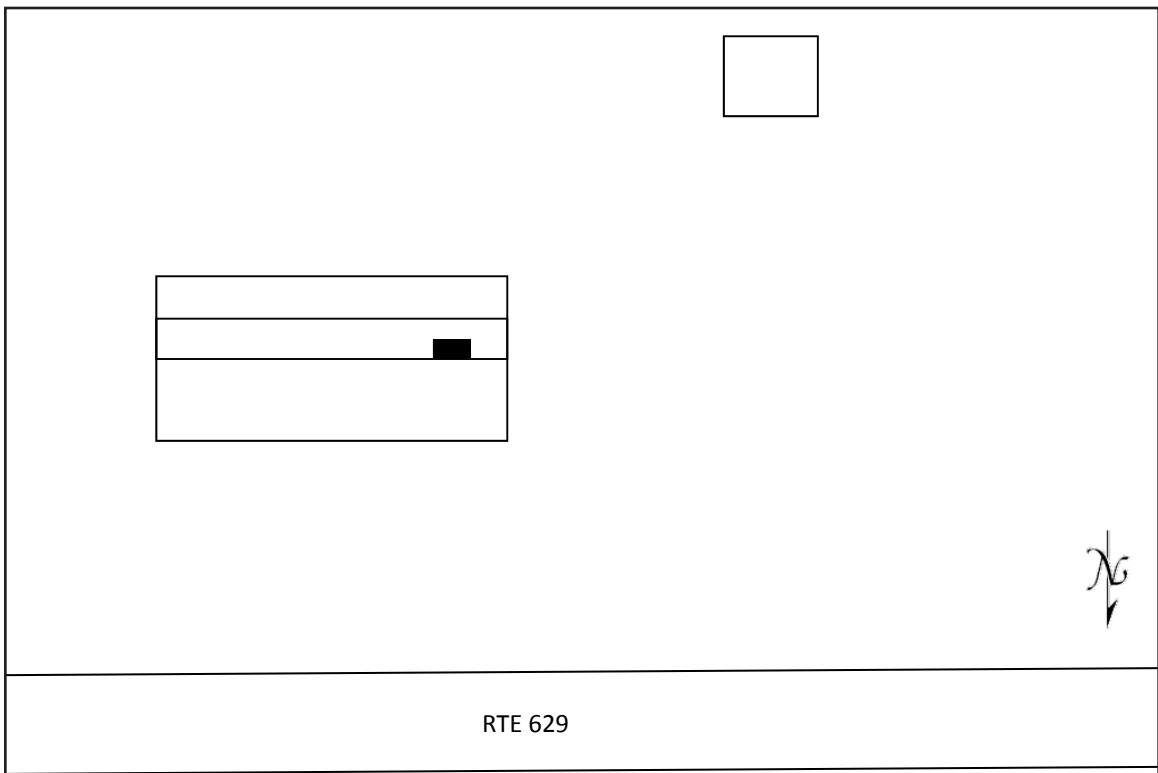


Figure 140. 007-5727, sketch map.





Figure 141. 007-5727, house, facing southeast.



Figure 142. 007-5727, house, facing southwest.



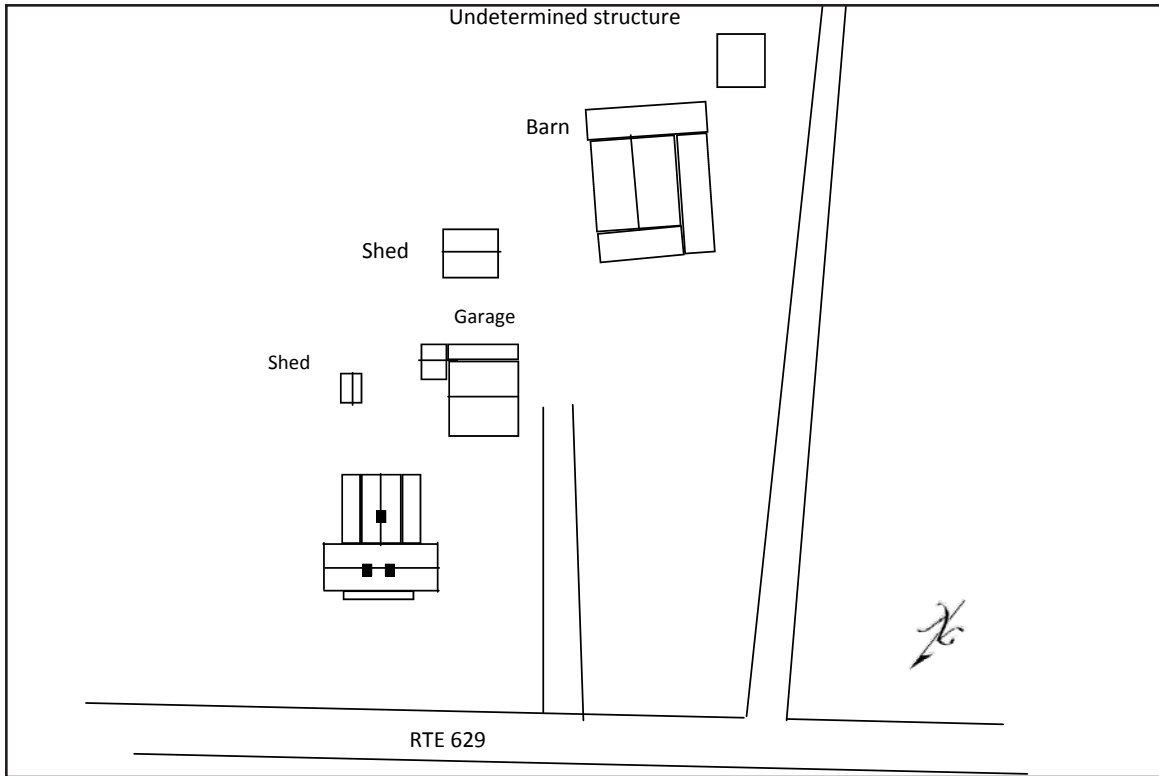


Figure 143. 007-5728, sketch map.



Figure 144. 007-5728, house, facing southeast.





Figure 145. 007-5728, house, facing south.



Figure 146. 007-5728, garage, facing northeast.





Figure 147. 007-5728, barn, facing east.

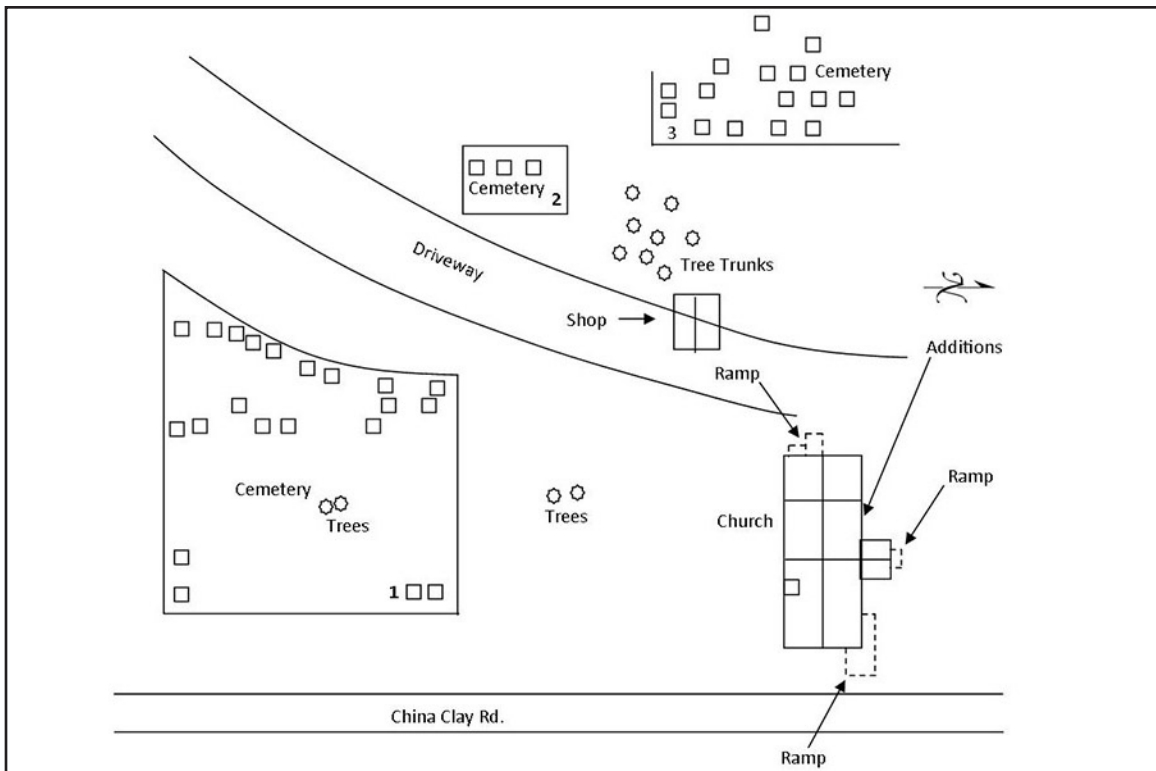


Figure 148. 007-5729, sketch map.





Figure 149. 007-5729, church, facing northwest.



Figure 150. 007-5729, church, facing southeast.





Figure 151. 007-5729, shop, facing west.



Figure 152. 007-5729, cemetery, facing southeast.





Figure 153. 007-5729, cemetery, facing south.



Figure 154. 007-5729, cemetery, facing west.



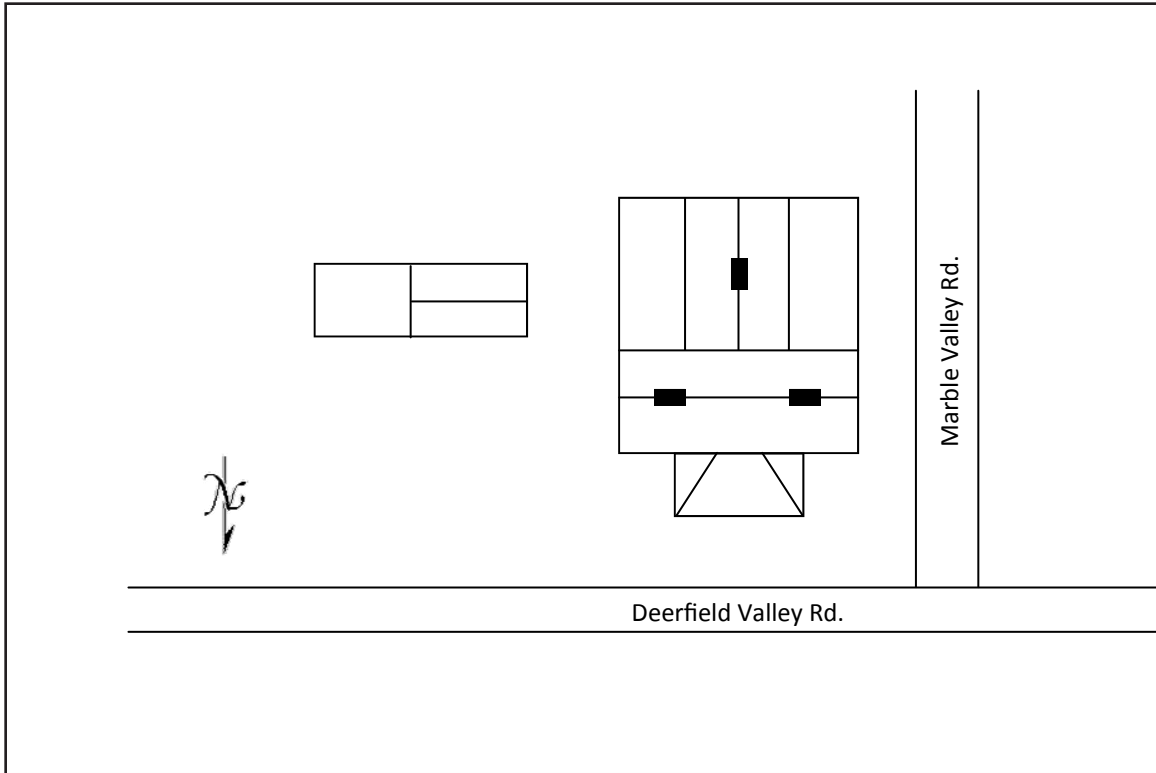


Figure 155. 007-5731, sketch map.



Figure 156. 007-5731, facing south.





Figure 157. 007-5731, facing east.



Figure 158. 007-5731, shed, facing south.



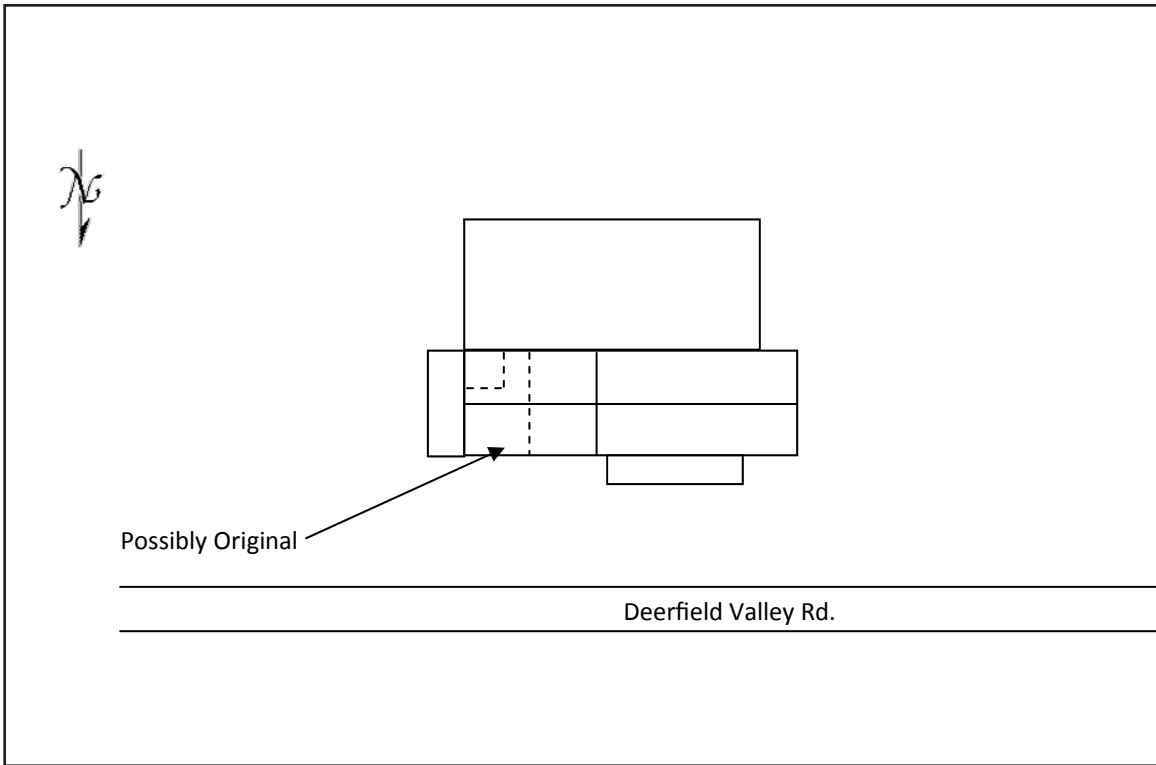


Figure 159. 007-5732, sketch map.



Figure 160. 007-5732, facing east-southeast.





Figure 161. 007-5732, facing southwest.

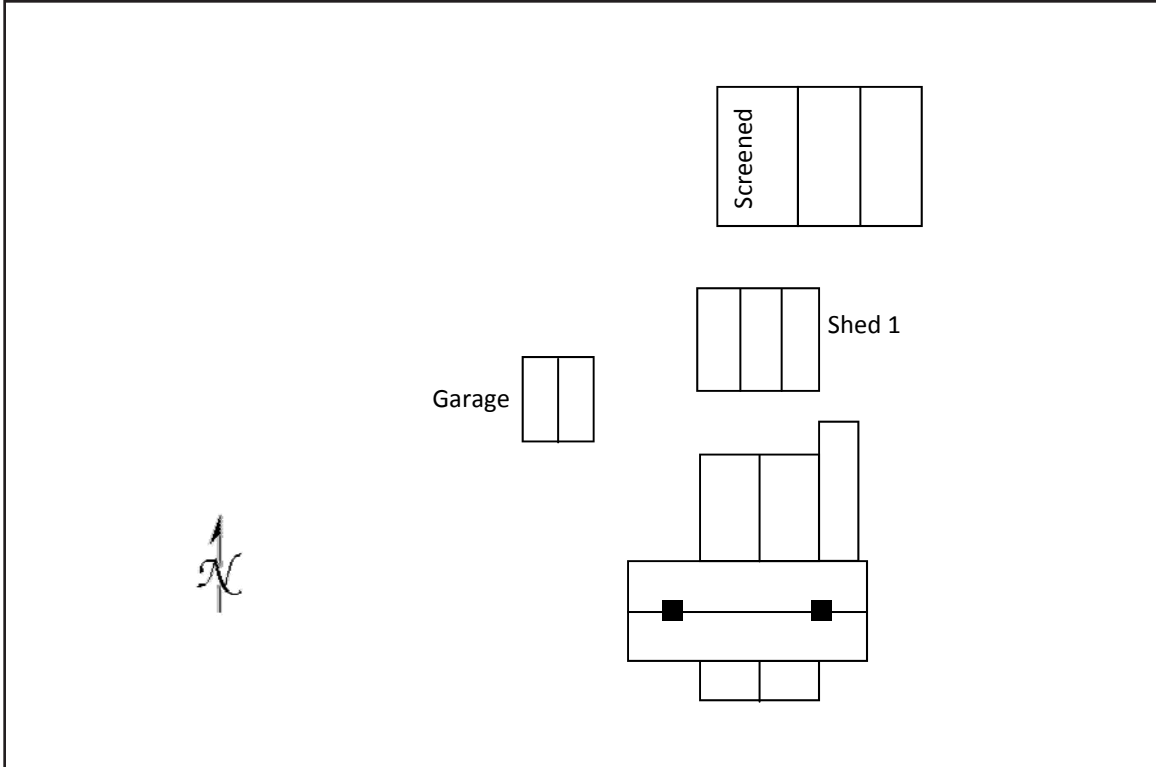


Figure 162. 007-5733, sketch map.





Figure 163. 007-5733, garage, facing north.



Figure 164. 007-5733, house, facing north-northwest.





Figure 165. 007-5733, house, facing northwest.



Figure 166. 007-5733, secondary dwelling, facing north.





Figure 167. 007-5733, modern metal barn, facing north.

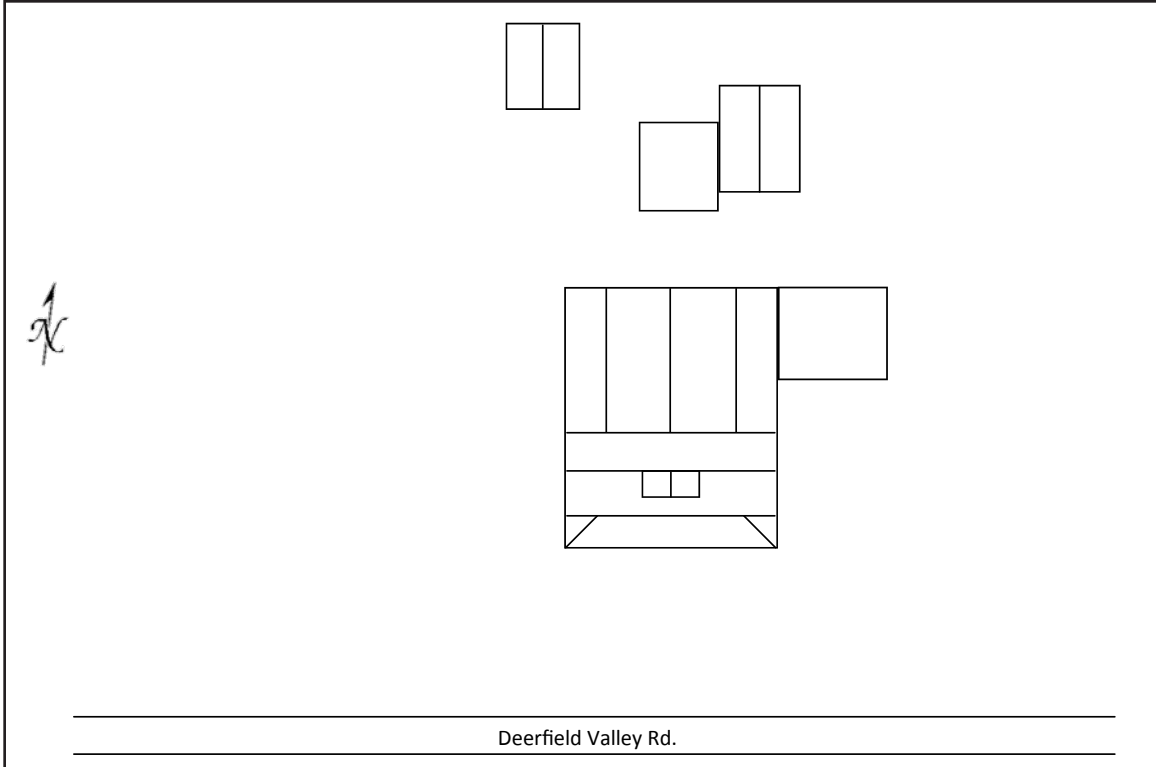


Figure 168. 007-5734, sketch map.





Figure 169. 007-5734, facing north-northwest.



Figure 170. 007-5734, facing northeast.





Figure 171. 007-5734, facing northwest.

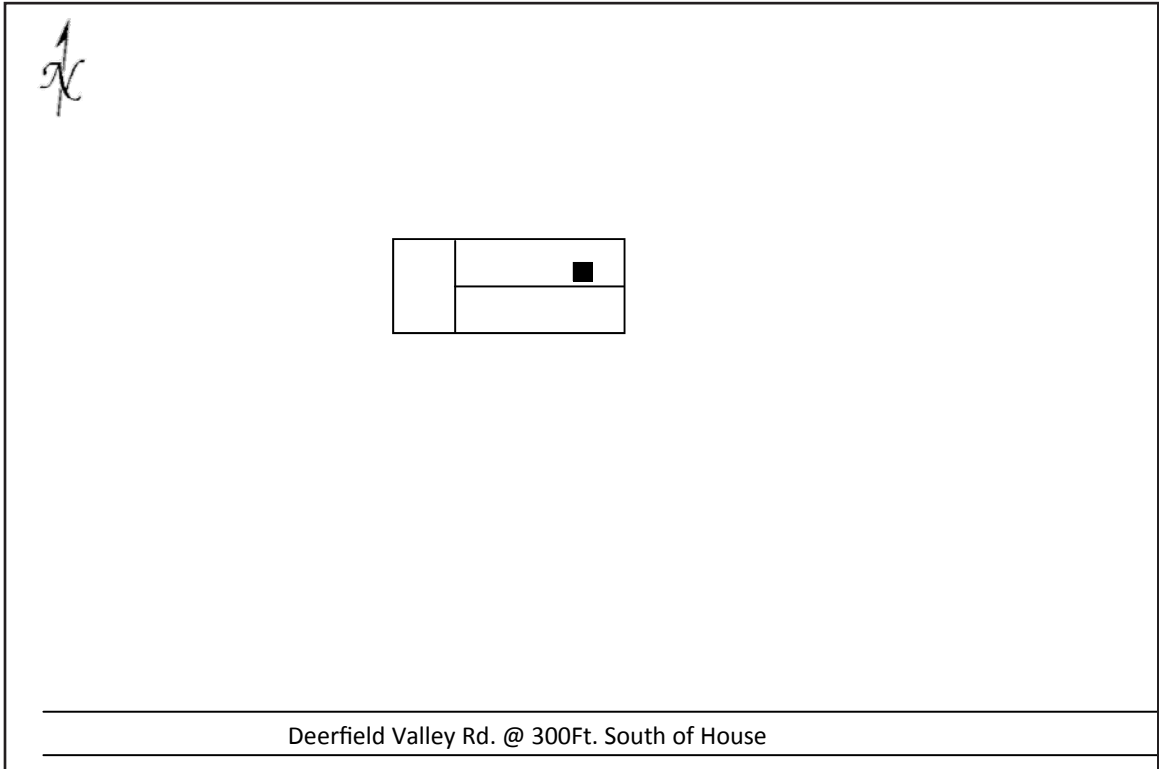


Figure 172. 007-5735, sketch map.





Figure 173. 007-5735, facing north.

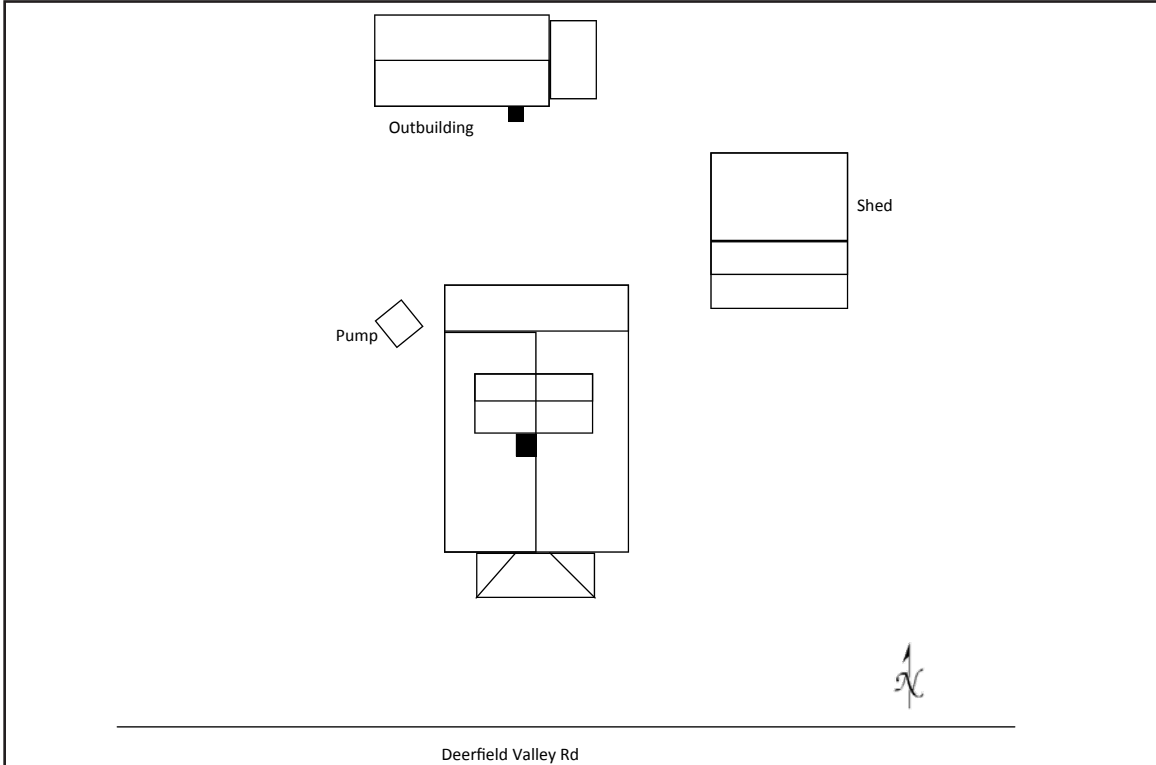


Figure 174. 007-5736, sketch map.





Figure 175. 007-5736, facing northeast.



Figure 176. 007-5736, facing north.





Figure 177. 007-5736, outbuilding, facing northeast.



Figure 178. 007-5736, outbuilding, facing north by northeast.



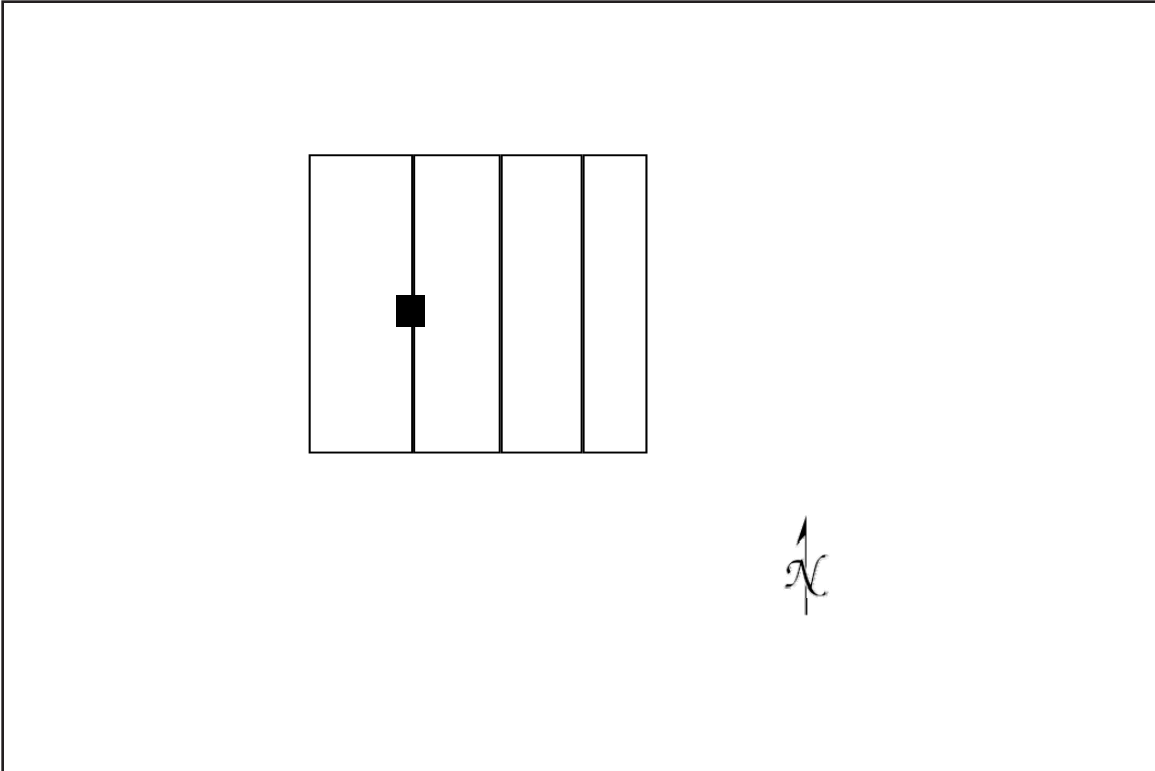


Figure 179. 007-5737, sketch map.



Figure 180. 007-5737, facing northeast.





Figure 181. 007-5737, facing northwest.

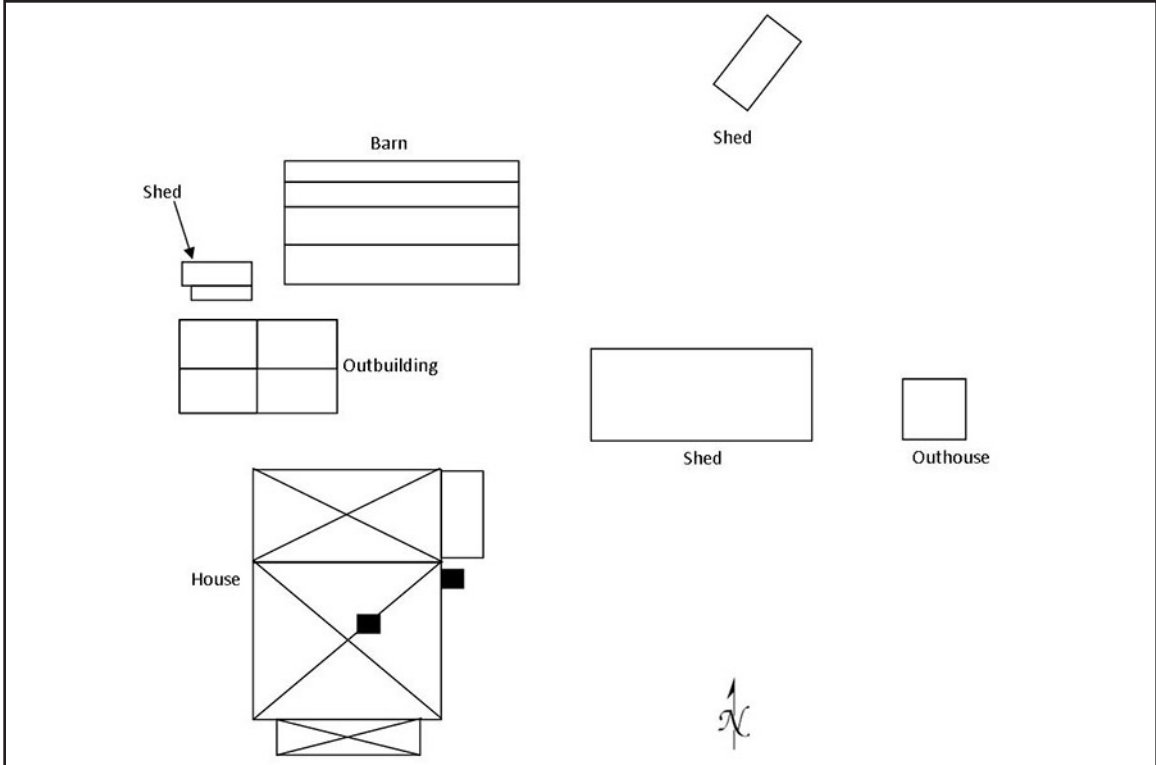


Figure 182. 007-5738 sketch map.





Figure 183. 007-5738, facing north.



Figure 184. 007-5738, facing northwest.





Figure 185. 007-5738, outbuilding, facing north.



Figure 186. 007-5738, barn, facing northwest.





Figure 187. 007-5738, outhouse, facing northwest.

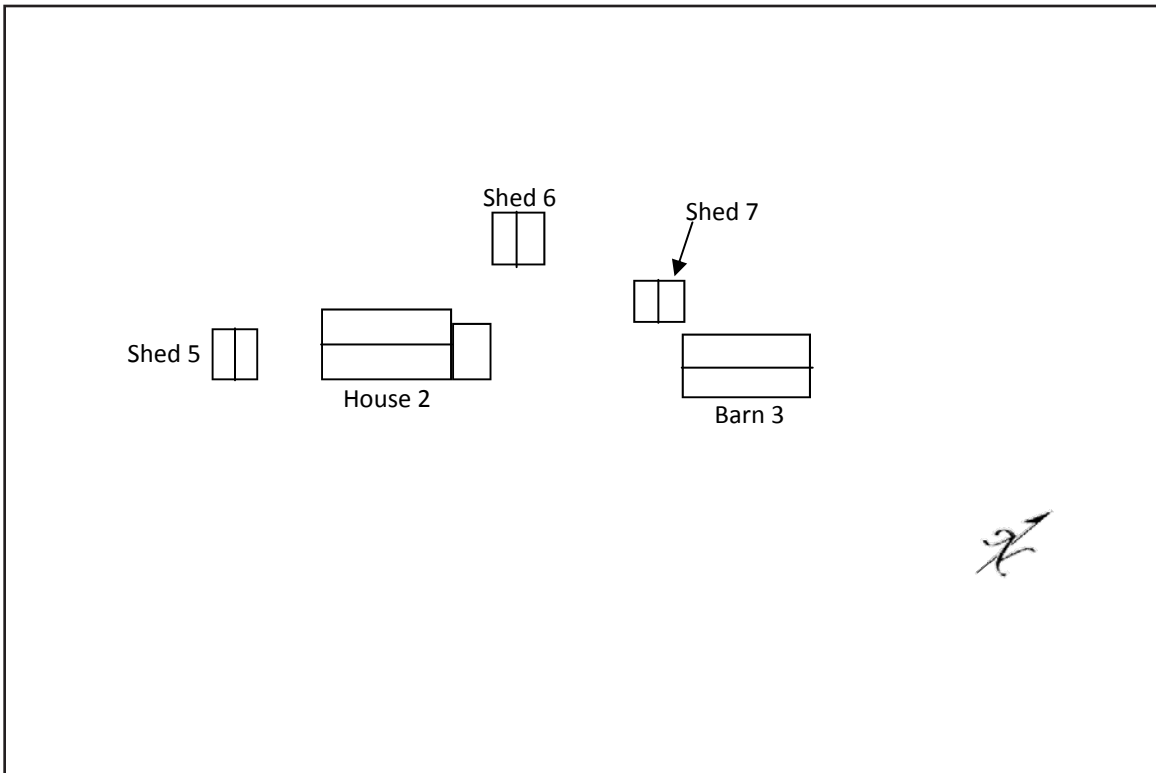


Figure 188. 007-5739, sketch map.





Figure 189. 007-5739, facing northwest.

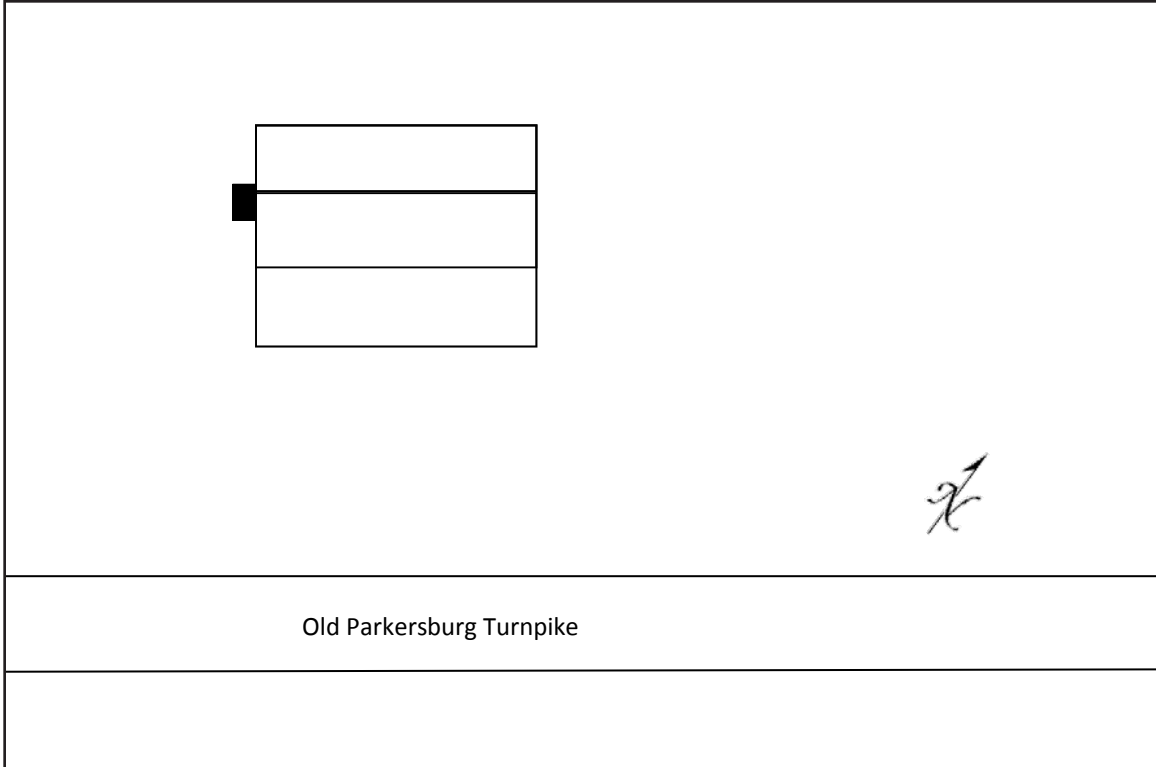


Figure 190. 007-5740, sketch map.





Figure 191. 007-5740, facing west.

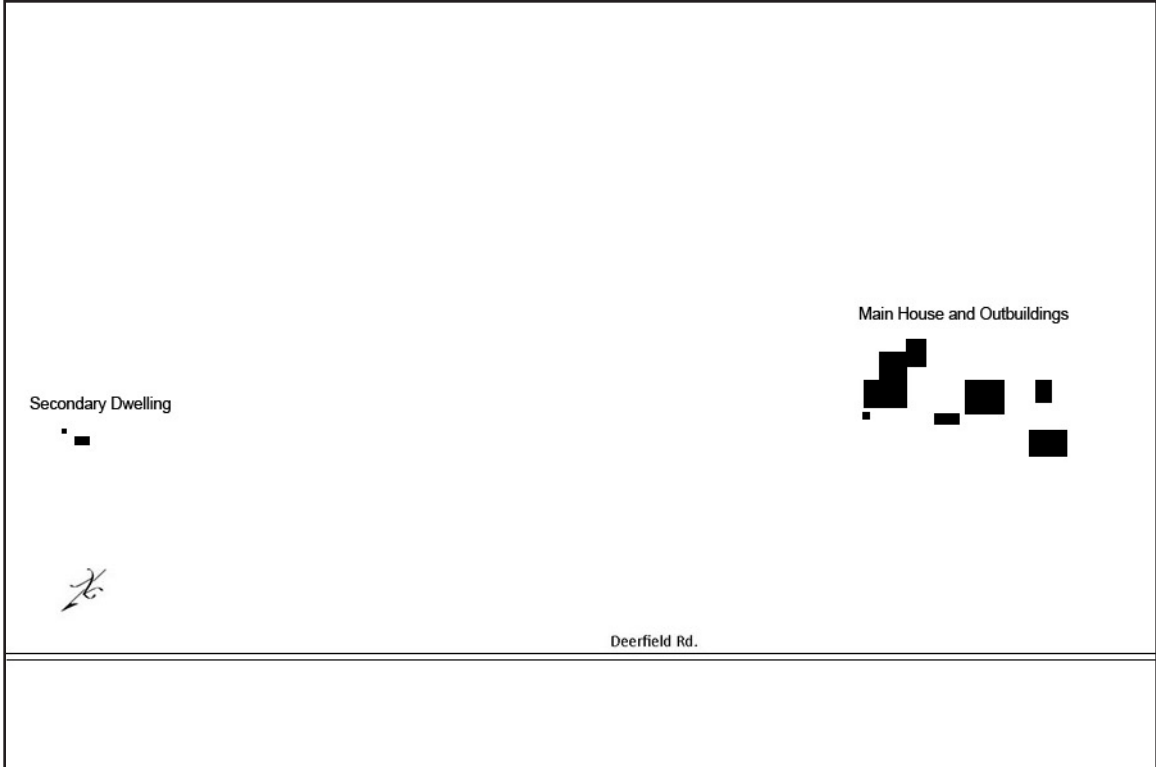


Figure 192. 008-0011, sketch map overview.



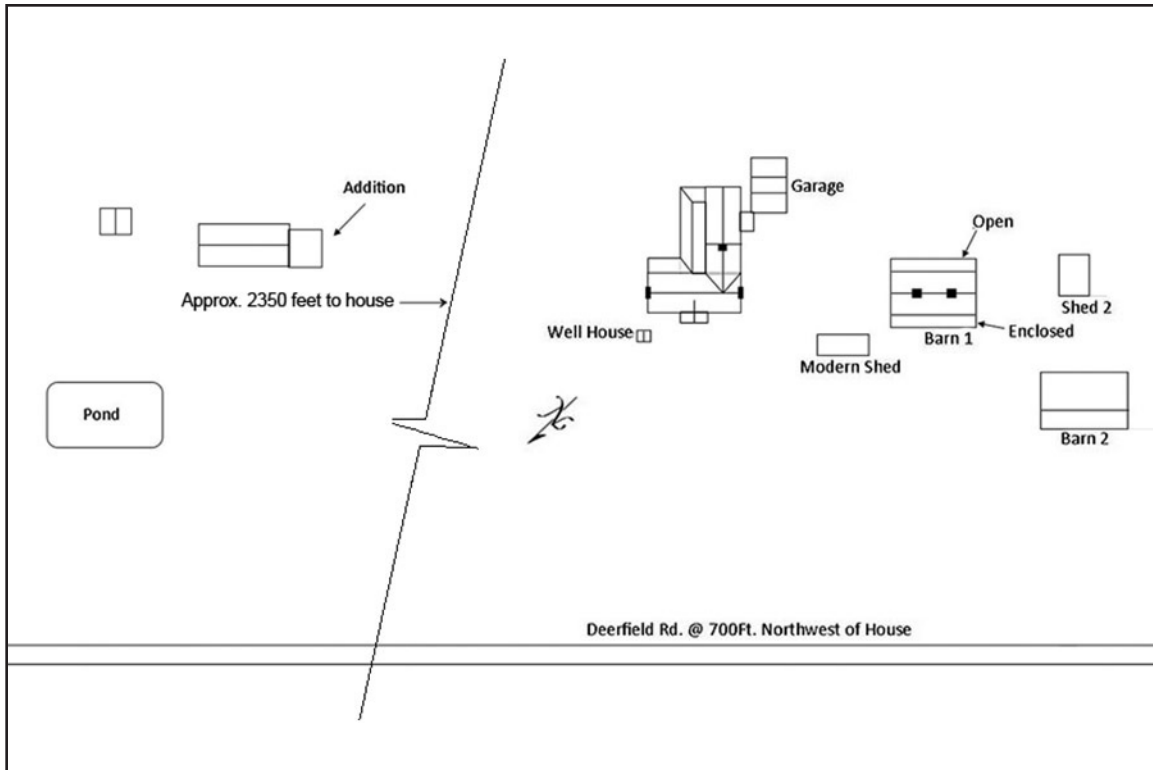


Figure 193. 008-0011, sketch map.



Figure 194. 008-0011, facing east.





Figure 195. 008-0011, facing southeast.



Figure 196. 008-0011, facing east.





Figure 197. 008-0011, facing west.



Figure 198. 008-0011, facing southwest.





Figure 199. 008-0011, facing southwest.



Figure 200. 008-0011, facing south.



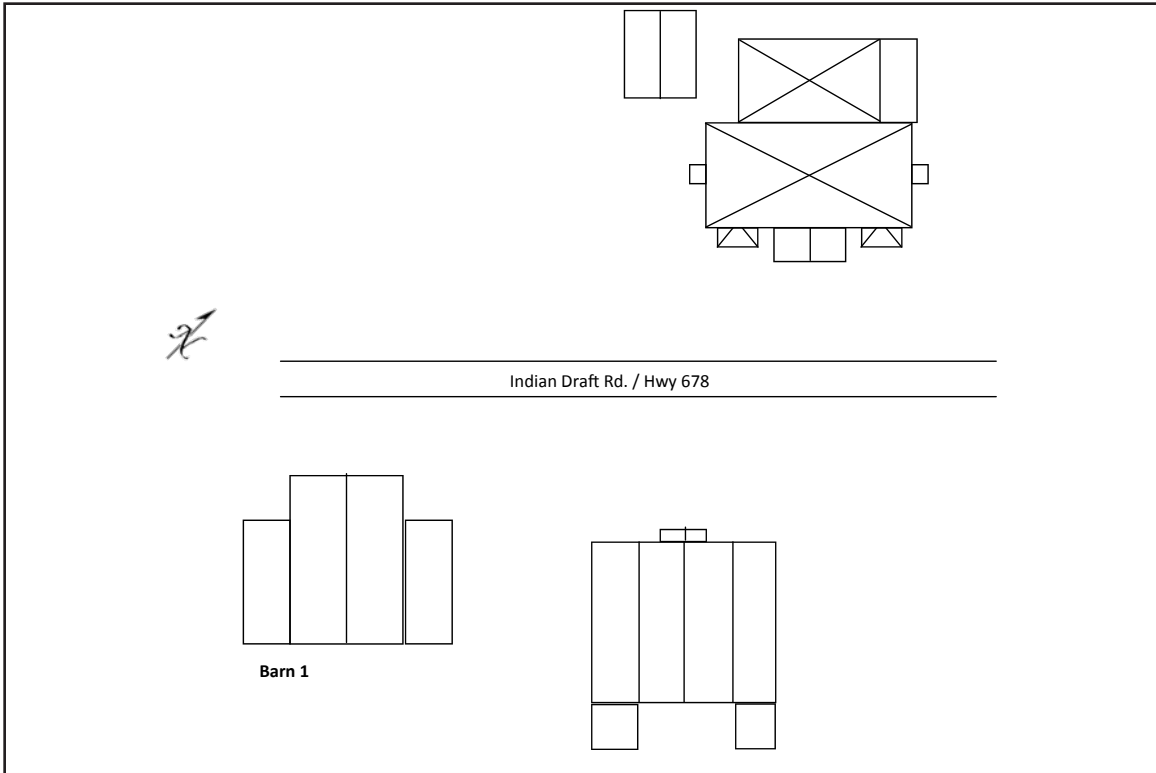


Figure 201. 008-0126, sketch map.



Figure 202. 008-0126, facing northwest.





Figure 203. 008-0126, facing north.



Figure 204. 008-0126, barn, facing east.





Figure 205. 008-0126, barn, facing northeast.

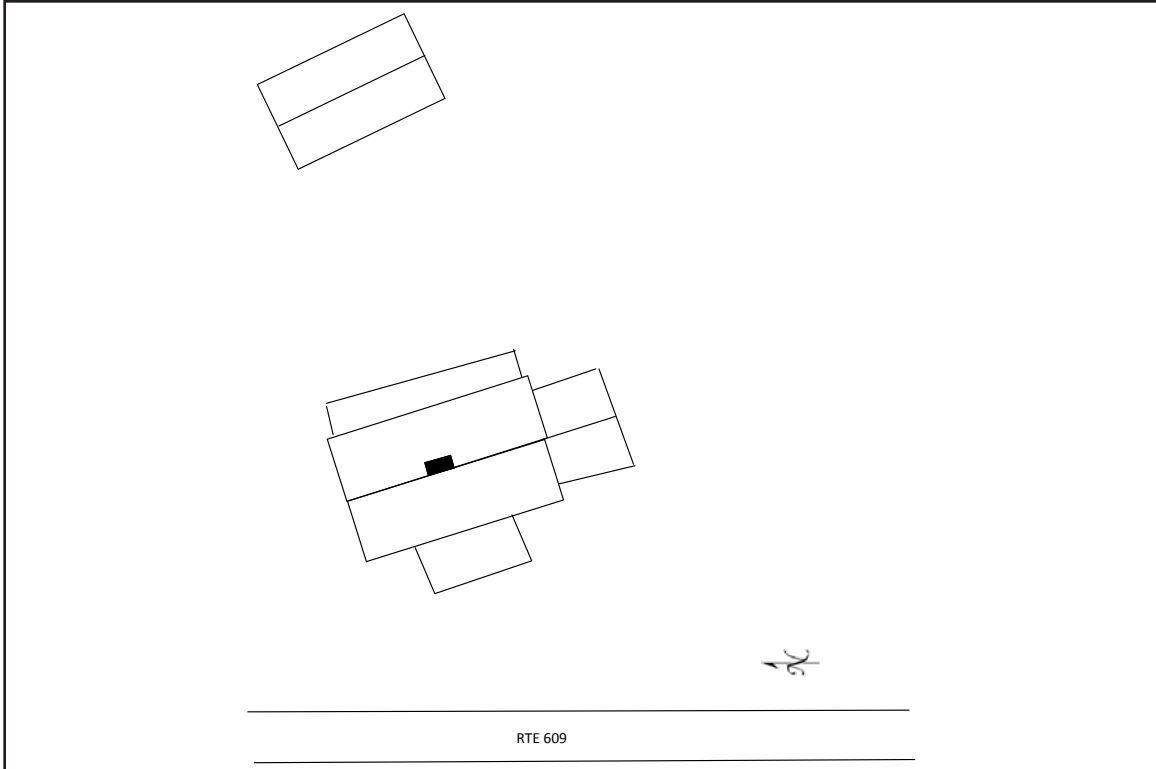


Figure 206. 008-5008, sketch map.





Figure 207. 008-5008, facing southeast.



Figure 208. 008-5008. barn (in distance), facing southeast.



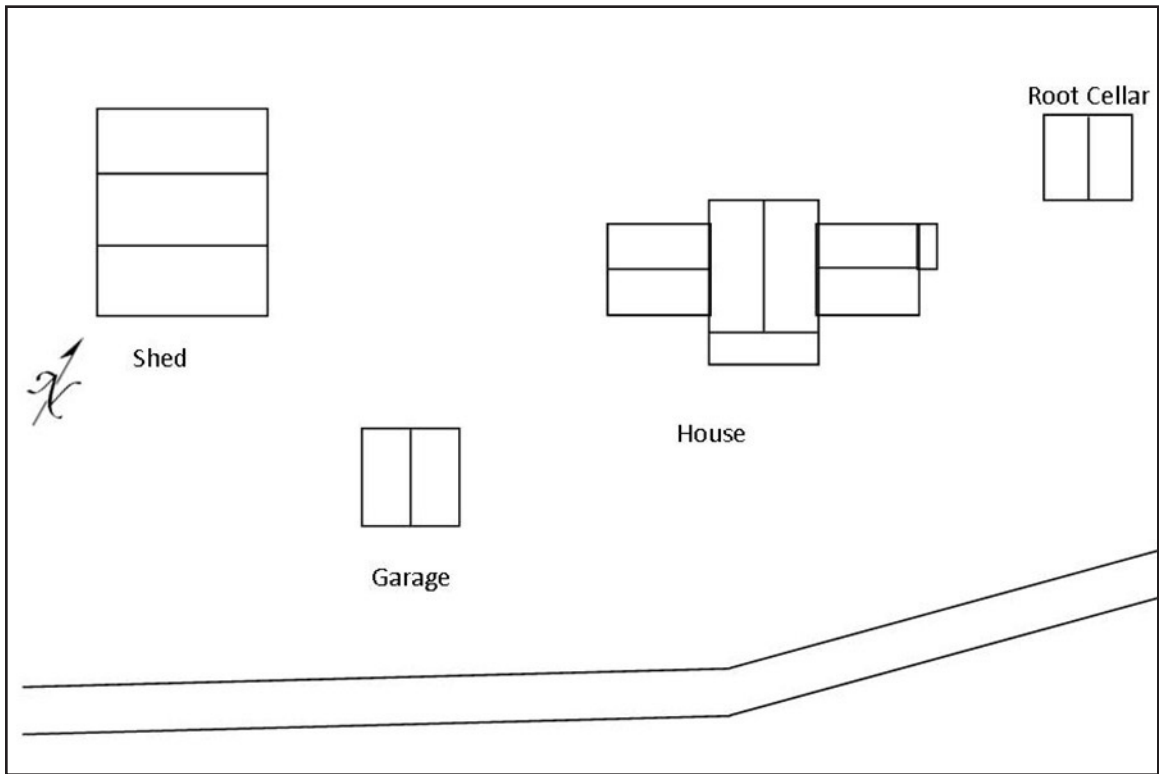


Figure 209. 008-5064, sketch map.



Figure 210. 008-5064, facing south.





Figure 211. 008-5064, facing southeast.

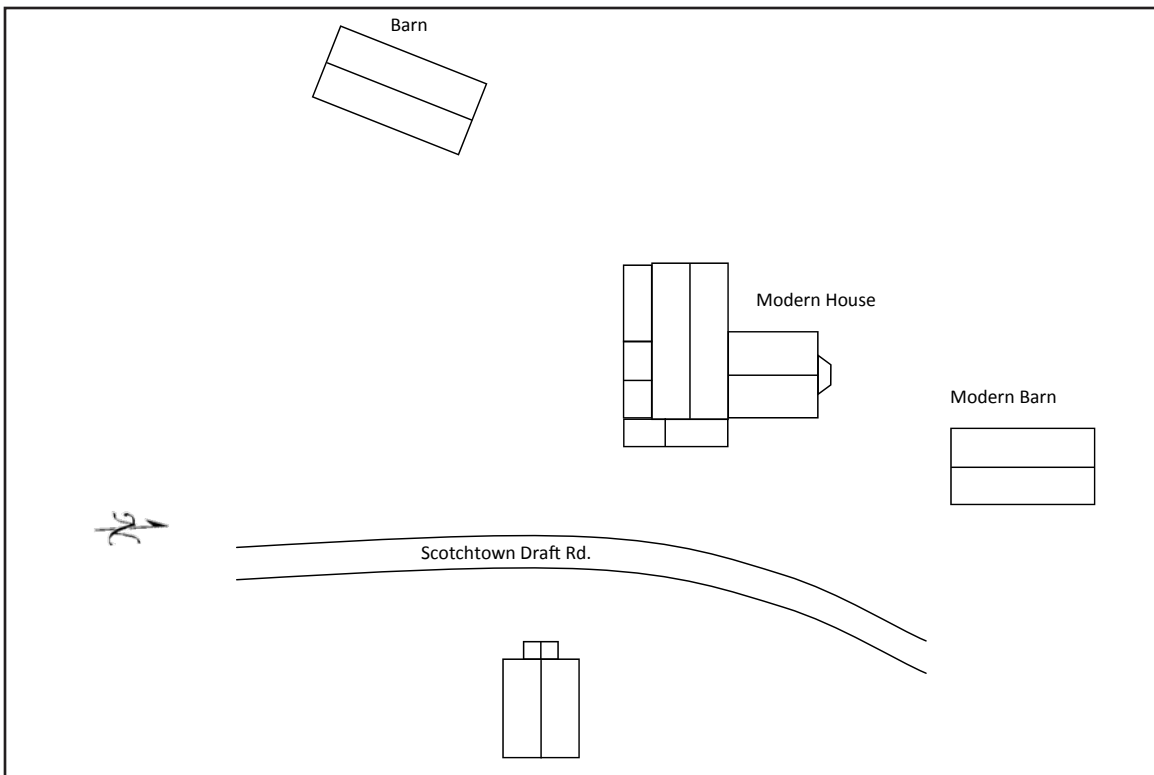


Figure 212. 008-5065, sketch map.





Figure 213. 008-5065, barn, facing north.



Figure 214. 008-5065, barn, facing west.



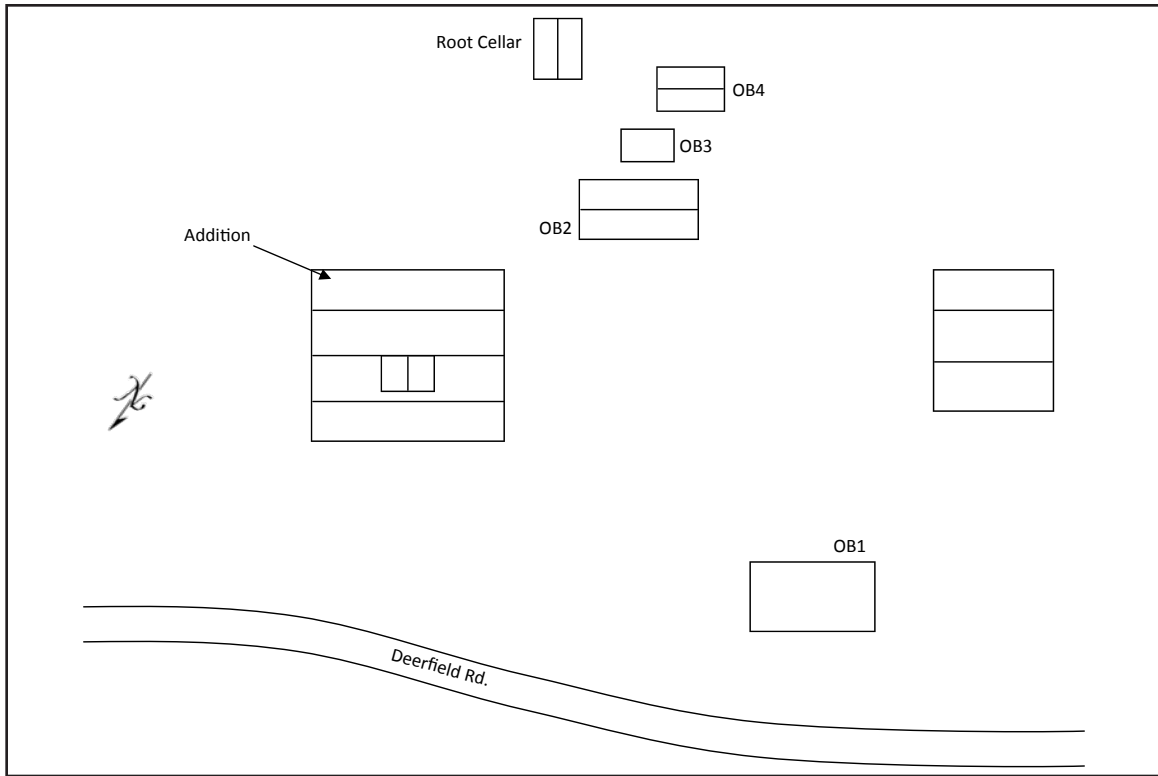


Figure 215. 008-5066, sketch map.



Figure 216. 008-5066, facing southeast.





Figure 217. 008-5066, facing southwest.



Figure 218. 008-5066, barn, facing southwest.





Figure 219. 008-5066, outbuildings, facing east.

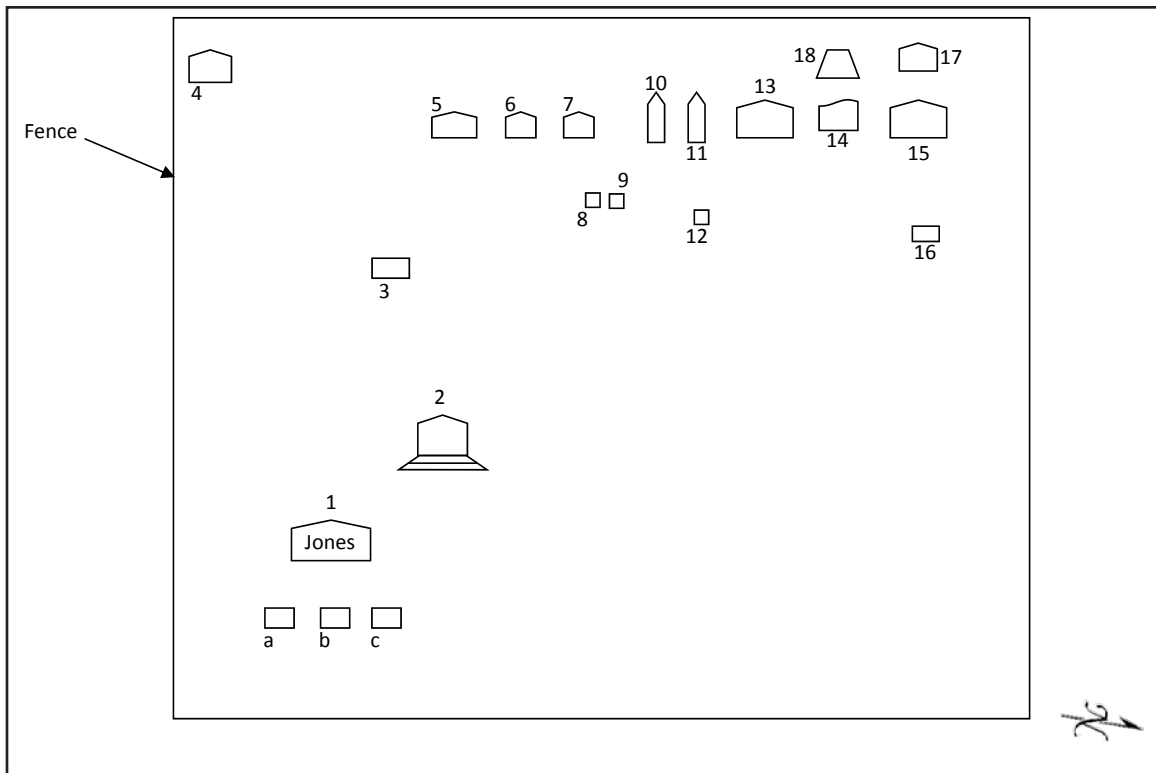


Figure 220. 008-5067, sketch map.





Figure 221. 008-5067, facing west.

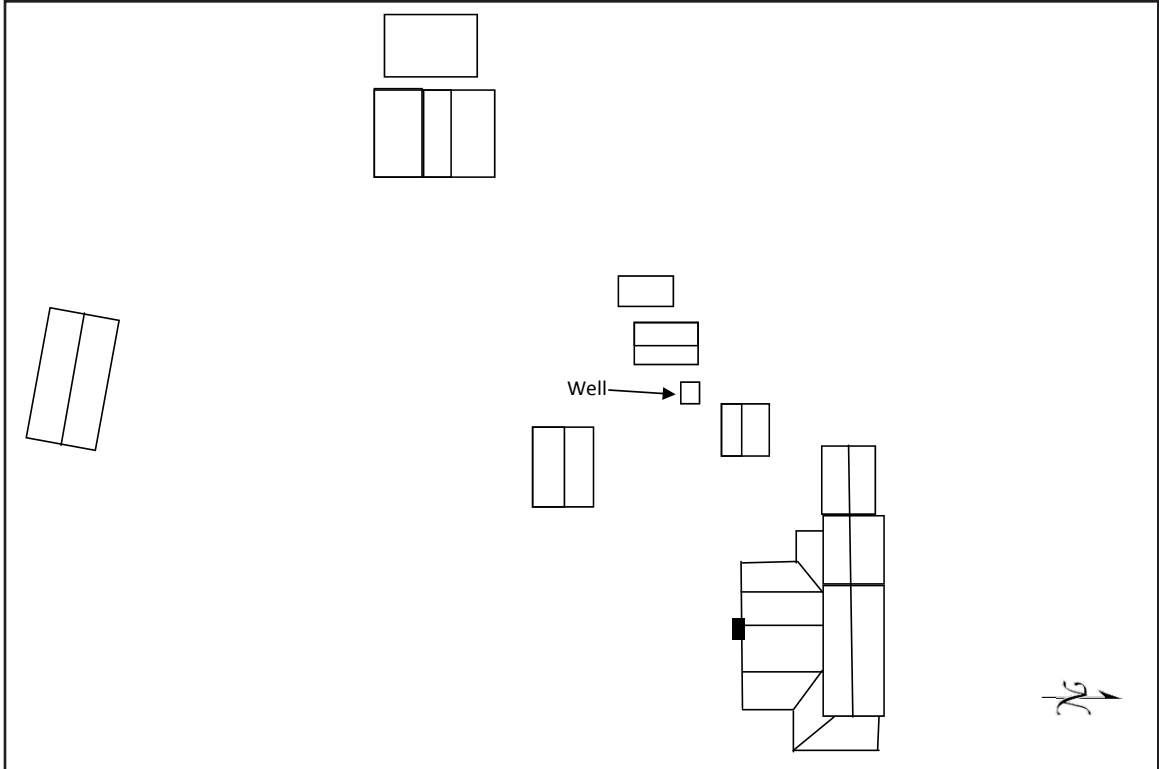


Figure 222. 014-5085, sketch map.





Figure 223. 014-5085, facing northwest.



Figure 224. 014-5085, facing west.





Figure 225. 014-5085, house, facing northeast.



Figure 226. 014-5085, shed and well, facing northeast.





Figure 227. 014-5085, ca. 1930 outbuildings, facing northeast.



Figure 228. 014-5085, ca. 1930 outbuilding, facing northeast.





Figure 229. 014-5085, barn, facing northwest.



Figure 230. 014-5085, ca. 1920s sheds, facing northeast.



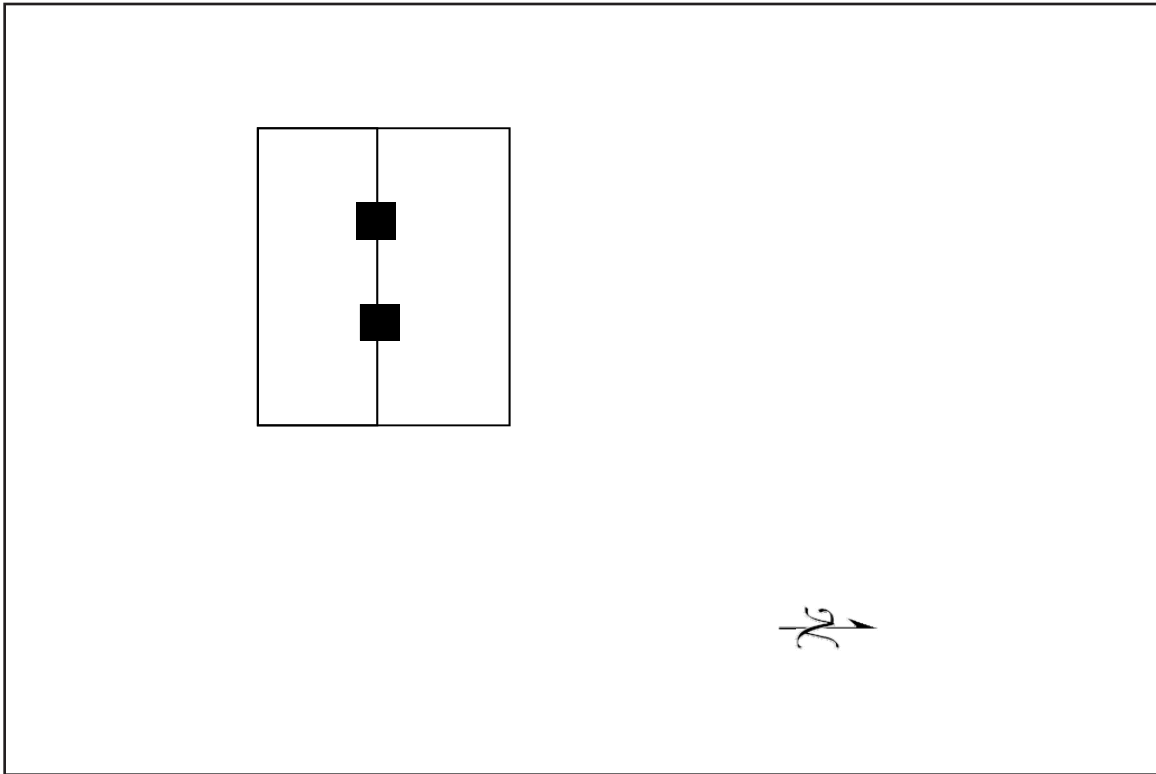


Figure 231. 014-5086, sketch map.



Figure 232. 014-5086, house with surroundings, facing northwest.





Figure 233. 014-5086, house, facing northwest.

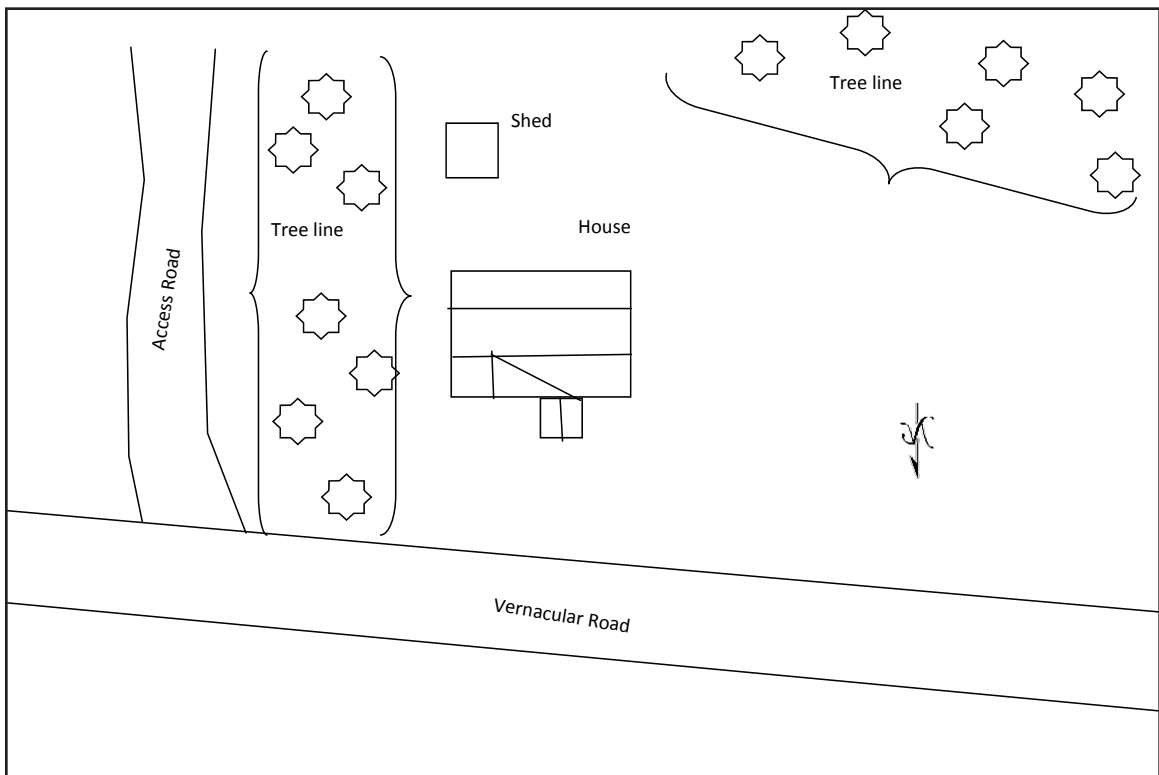


Figure 234. 026-5256, sketch map.





Figure 235. 026-5256, house, facing south.



Figure 236. 026-5256, house and shed, facing southwest.



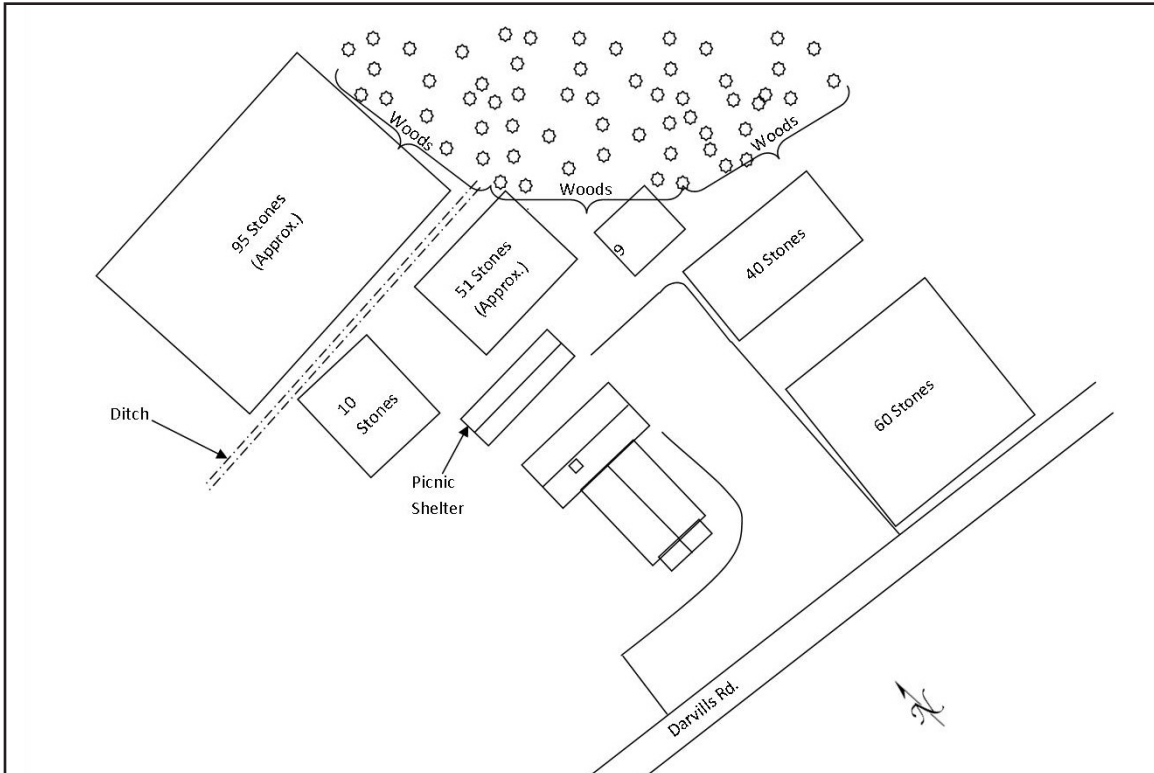


Figure 237. 026-5257, sketch map.



Figure 238. 026-5257, church, facing northeast.





Figure 239. 026-5257, church facing southeast.



Figure 240. 026-5257, cemetery, facing north.



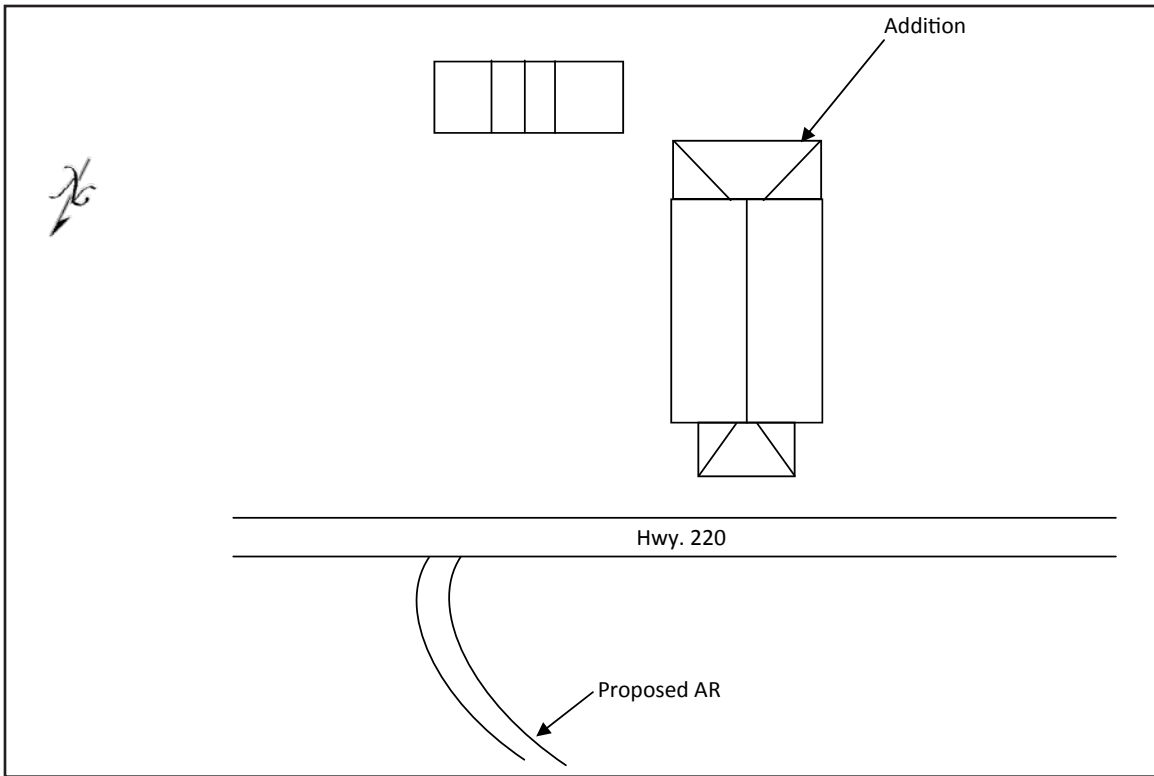


Figure 241. 045-5088, sketch map.



Figure 242. 045-5088, facing south.





Figure 243. 045-5088, facing south.



Figure 244. 062-5160, Pauline White House, facing northeast.



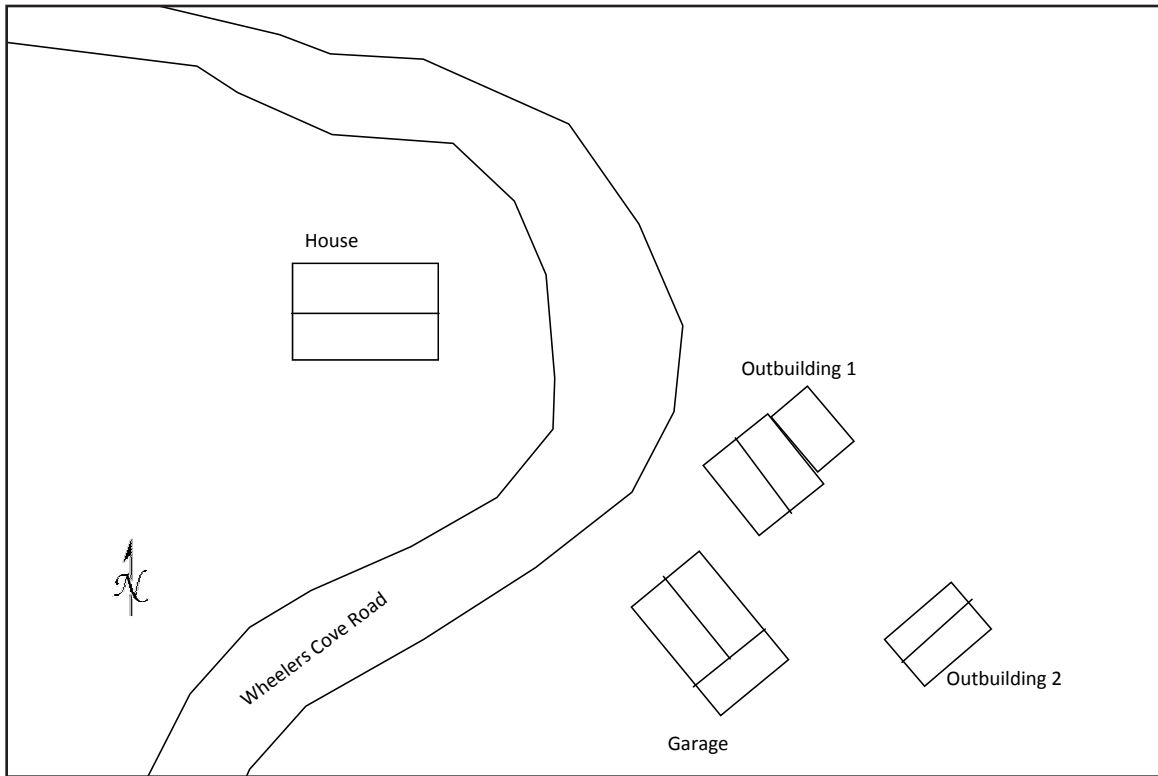


Figure 245. 062-5223, sketch map.



Figure 246. 062-5223, house, facing west.





Figure 247. 062-5223, outbuilding, facing southeast.



Figure 248. 062-5223, garage, facing southeast.



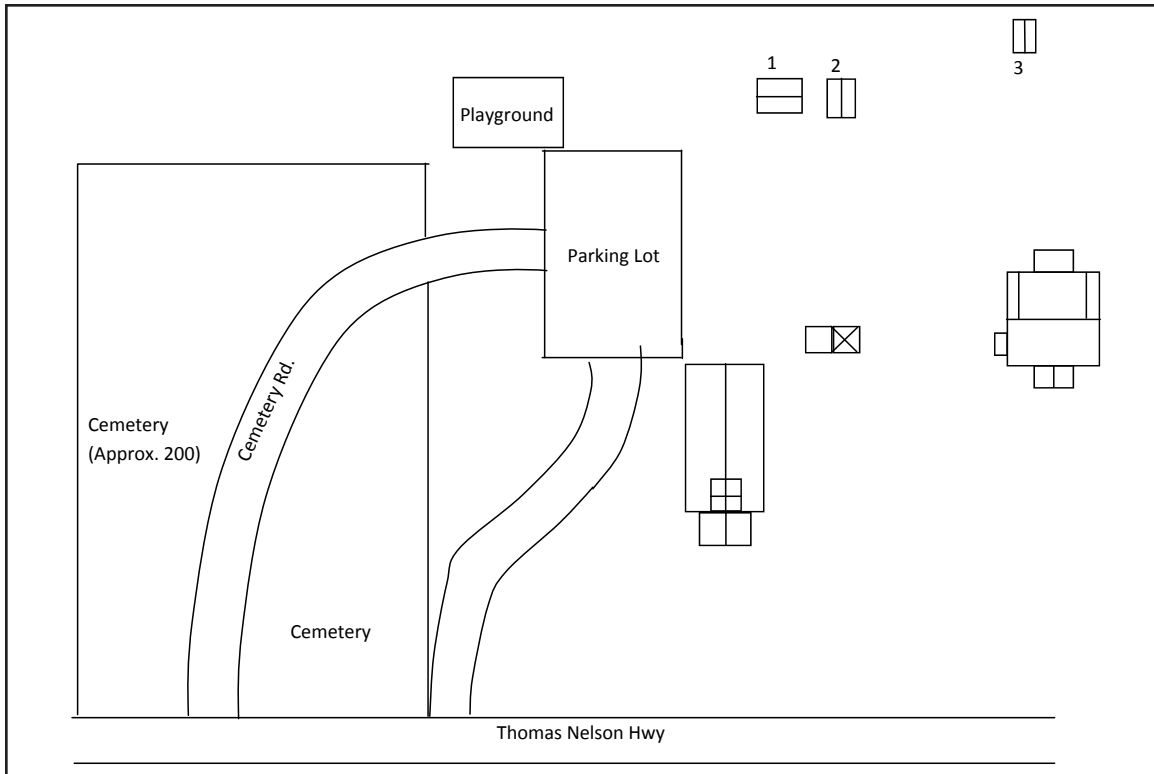


Figure 249. 062-5229, sketch map.



Figure 250. 062-5229, facing east.





Figure 251. 062-5229, facing northeast.



Figure 252. 062-5229, facing northwest.





Figure 253. 062-5229, Shed 1 and Shed 2, facing northeast.



Figure 254. 062-5229, well house, facing southeast.





Figure 255. 062-5229, parsonage, facing east-southeast.



Figure 256. 062-5229, parsonage, facing southwest.





Figure 257. 062-5229, lawn cemetery, facing northeast.

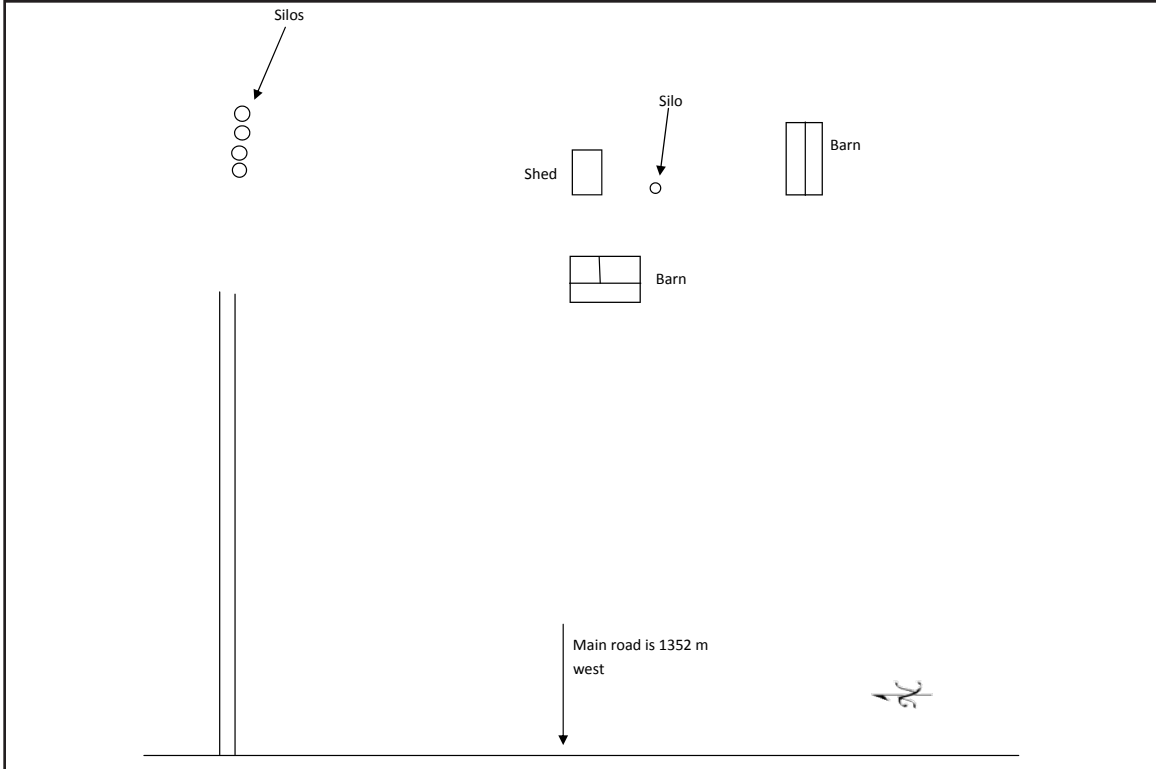


Figure 258. 087-5669, sketch map.





Figure 259. 087-5669, facing southeast.



Figure 260. 087-5669, facing southeast.





Figure 261. 131-5325, proposed access road 27-06-AR1, facing south.



Figure 262. 131-5325, proposed access road 27-002-AR1, facing west.



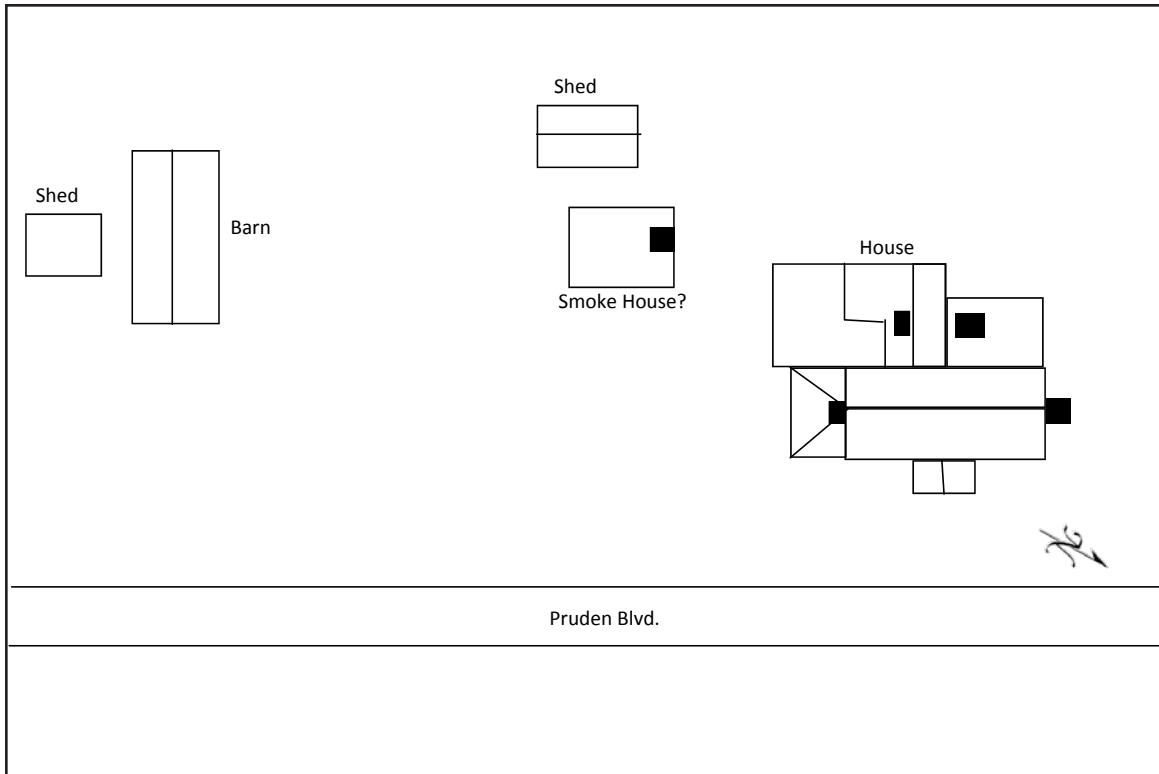


Figure 263. 133-0101, sketch map.



Figure 264. 133-0101, facing south.





Figure 265. 133-0101, primary entrance, facing southeast.



Figure 266. 133-0101, facing east.





Figure 267. 133-0101, facing west.



Figure 268. 133-0101, potato house, facing west.





Figure 269. 133-0101, smokehouse, facing south.



Figure 270. 133-0101, barn, facing southwest.





Figure 271. 133-0101, corn crib, facing south.

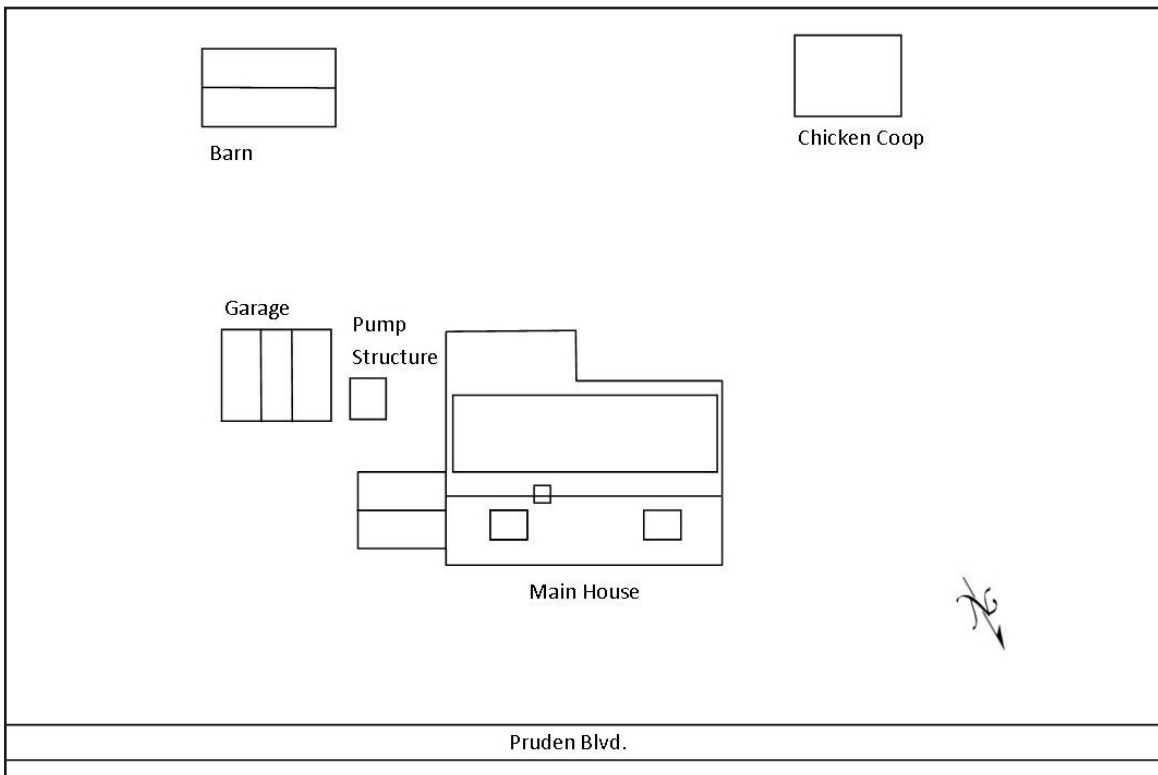


Figure 272. 133-5443, sketch map.





Figure 273. 133-5443, facing southeast.



Figure 274. 133-5443, facing northwest.





Figure 275. 133-5443, facing northeast.



Figure 276. 133-5443, barn, facing east.



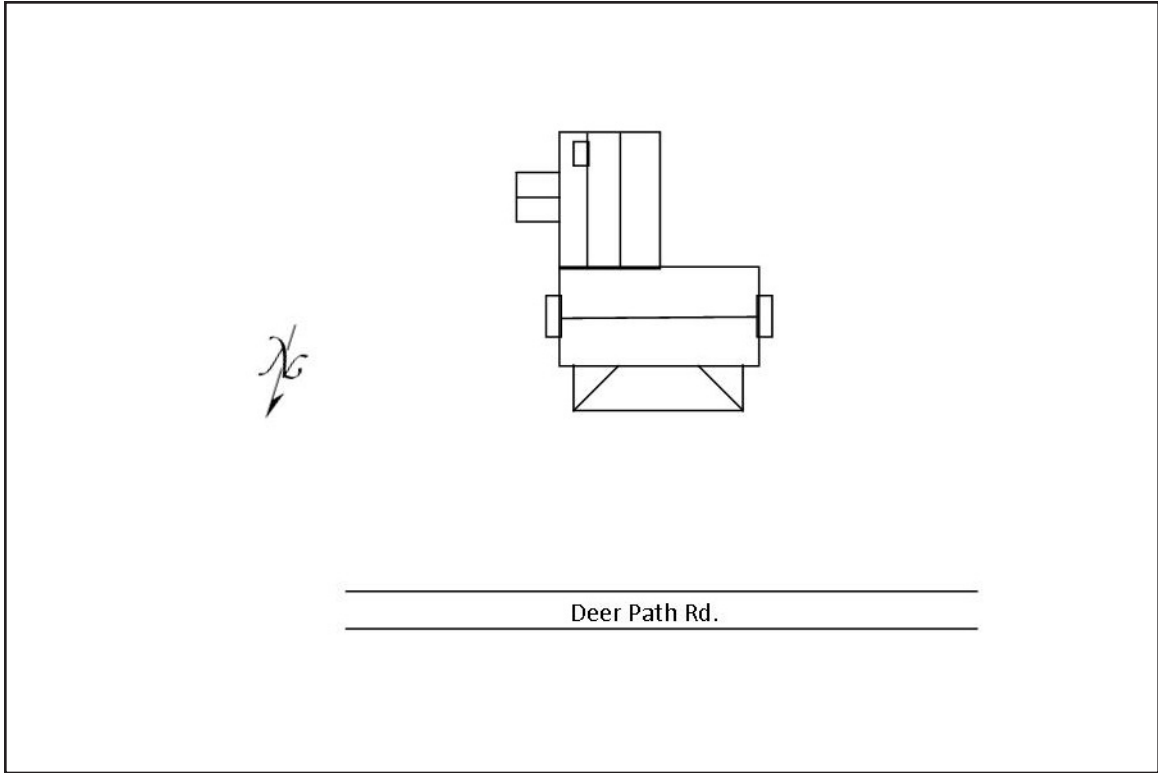


Figure 277. 133-5580, sketch map.



Figure 278. 133-5580, facing southwest.





Figure 279. 133-5580, facing northeast.

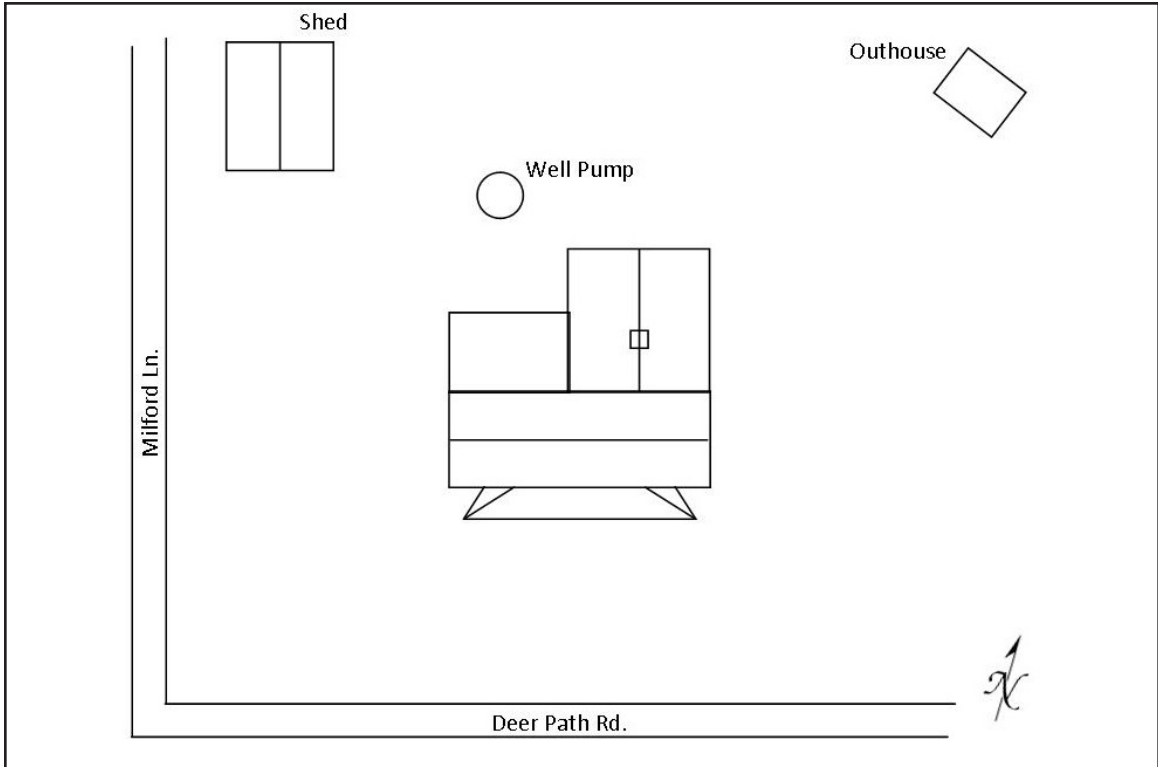


Figure 280. 133-5581, sketch map.





Figure 281. 133-5581, facing northeast.



Figure 282. 133-5581, facing southeast.



## **APPENDIX C – RESUMES**



# Emily Tucker-Laird

Staff Scientist



Ms. Tucker-Laird has ten-plus years of experience in cultural resources management, and is Secretary of the Interior Qualified as an architectural historian and archaeologist. Ms. Tucker-Laird has experience in the oil and gas, transportation, power, and telecommunications industries. Ms. Tucker-Laird has worked on projects in Alabama, Arkansas, Georgia, Illinois, Indiana, Louisiana, Maine, Mississippi, North Carolina, Ohio, Oklahoma, Pennsylvania, South Carolina, Tennessee, and Texas. These projects involved private sector clients, county and municipal governments, state agencies, and federal clients. Ms. Tucker-Laird has been involved in all aspects of project tasks. She has coordinated with clients, state, and federal agencies. She has conducted background research and field studies, written reports, and prepared relevant state and federal forms.

## Registrations & Professional Affiliations

- Register of Professional Archaeologists (RPA)

## Fields of Competence

- Phase I, II, and III Archaeological Field Investigations
- Architectural Resource Field Survey
- National Register of Historic Places eligibility evaluation
- Cemetery Delineation and Excavation
- Preparation of State Archaeological and Architectural Survey Forms
- Rural America and Vernacular Forms
- Industrial and Transportation Resources
- Compliance with state, and federal cultural resource regulations, including guidelines set forth by various State Historic Preservation Offices, the

National Historic Preservation Act and the National Environmental Policy Act

## Education and Training

- M.A., Anthropology, Ball State University, 2013
- M.S., Historic Preservation, Ball State University, 2003
- B.S., Social Sciences, University of Pittsburgh, 1999

## Certificates

- Federal Energy Regulatory Commission Environmental Review and Compliance for Natural Gas Facilities (FERC, February 25-27, 2014)
- Occupational Safety and Health Standards for the Construction Industry: OTI510 (GA Tech, April 8-12, 2013)
- Introduction to NEPA and Transportation Decision Making (web-based, National Highway Institute, January 7, 2013)
- NEPA Cumulative Effects Analysis and Documentation (The Shipley Group, August 30 and 31, 2012)
- Identification and Management of Traditional Cultural Places (National Preservation Institute, June 19 and 20, 2012)
- NEPA and the Transportation Decision Making Process (National Highway Institute, June 12-14, 2012)
- Section 4f: Compliance for Historic Properties (National Preservation Institute, December 8 and 9, 2011)
- Section 106: Principles and Practice (SRI Foundation, January 12 and 13, 2010)



## Key Projects

*With ERM*

### **Telecommunications Client - Nationwide**

Architectural Historian and Archaeologist for a nationwide NEPA Program Management Team serving a major national telecommunications carrier, provide QA/QC oversight on cultural resources submittals and client deliverables. Key tasks include assuring that all compliance submittals conform to regulatory requirements as well as meeting client standards, and assuring that required documentation of compliance is included in all client deliverables. This includes SHPO, tribal, local government, and public consultation under the National Historic Preservation Act and the National Environmental Policy Act.

### **Anadarko Petroleum Corporation - Wyoming, Colorado**

2015: NEPA and Section 106 efforts to support 64 telecommunications projects within existing Wattenberg, CO facilities. Served as co-tribal consultant, researcher and report writer.

*Representative Historical Architectural Studies with Other Companies*

Architectural Historian for the HABS Level II documentation of selected resources of the Tennessee Valley Authority Muscle Shoals Reservation, Alabama. The architectural survey included a detailed survey of both the interior and exterior of 20 resources.

Architectural Historian for 55.18-miles of proposed transmission line in Burke, Jefferson, McDuffie, and Warren counties, GA. The architectural survey involved identifying all historic resources, both newly and previously recorded that could fall within the viewshed of the proposed project.

Architectural Historian during the Georgetown Historic District Survey, including fieldwork to record 900 resources within the National Register-listed historic district.

Architectural Historian for a conditions assessment of the 13-acre Linwood Cemetery in Macon, Georgia. Containing over 4,000 burials, this historic African-American Cemetery had succumbed to neglect over a period of decades.

*Representative Archaeological Studies with Other Companies*

Environmental Coordinator and TRC Health and Safety Lead, acting as a liaison between the crew, subcontractors, and client for this 80-mile long project in Illinois and Indiana.

Co-field director for the Phase III Spirit Hill Site excavations, in Alabama. The site included both formal burial areas and intensively used residential zones that were occupied during the Late Woodland and Mississippian periods.

Field director for the removal of 357 individuals from 362 graves at the Wells Cemetery in Tennessee. Duties included crew supervision and coordination, assuring that burials were removed with consistent methodology, photography, and organizing excavation notes. Following the field effort, created a burial database.

## **Selected Publications**

2014 *Phase I Cultural Resource Survey for the Line 78 Project in Livingston, Grundy, Kankakee, Will, and Cook Counties, Illinois*. TRC Environmental Corporation. Report Submitted to Enbridge Energy, Limited Partnership (senior author with Price K. Laird, Jeffery L. Holland, Jessica Burr, and Larissa A. Thomas).

2012 *HABS Level II Documentation of 20 Historic Resources on the Tennessee Valley Authority Muscle Shoals Reservoir, Colbert County, Alabama*. TRC, Inc. Report Submitted to Tennessee Valley Authority (with Jeffery L. Holland, Jessica Burr, and Vincent Macek).

2007 *Phase I Cultural Resource Survey for the Monroe Gas Storage Project, Monroe County, Mississippi*. TRC, Inc. Report Submitted to Foothills Energy Ventures, LLC (senior author with Jeffrey L. Holland).