



January 19, 2017

Kimberly D. Bose, Secretary
Federal Energy Regulatory Commission
888 First Street, N.E.
Washington, D.C. 20426

**Re: Atlantic Coast Pipeline, LLC & Dominion Transmission, Inc.
Atlantic Coast Pipeline & Supply Header Projects
Docket Nos. CP15-554-000, CP15-554-001, & CP15-555-000
Supplemental Information**

Dear Secretary Bose:

On September 18, 2015, Atlantic Coast Pipeline, LLC (Atlantic) and Dominion Transmission, Inc. (DTI) filed abbreviated applications (Applications), under the above referenced dockets CP15-554-000 and CP15-555-000, for the Atlantic Coast Pipeline and Supply Header Projects (Projects) pursuant to Section 7(c) of the Natural Gas Act, as amended, and Part 157 of the Rules and Regulations of the Federal Energy Regulatory Commission (Commission or FERC). Additionally, on March 14, 2016, Atlantic filed an Amendment to its pending Application, under the above referenced docket CP15-554-001.

DTI, on behalf of Atlantic and itself, hereby submits supplemental information. This submission consists of the following documents:

- Supplemental Information – January 19, 2017
- Appendix A – Minor Route Adjustment Maps
- Appendix B – Updated Alignment Sheets
- Appendix C – Minor Route Adjustment Table (**Contains Privileged Information – Do Not Release**)
- Appendix D – Route 58 HDD Site-Specific Crossing Plan
- Appendix E – Updated Resource Report 9 Tables
- Appendix F – Wetland Impacts at Modified Aboveground Facility Sites
- ACP Landowner Lists (**Contains Privileged Information – Do Not Release**)

DTI requests that, pursuant to 18 C.F.R. § 388.112, the information filed in Appendix C and the landowner list attachment be treated as privileged and confidential, and that this information not be released to the public. This information is labeled “Contains Privileged Information – Do Not Release” and contains the locations of archaeological resources, sensitive species, and landowner information which is customarily treated as privileged and confidential.

If you have any questions, please contact me at 866-319-3382.

Respectfully submitted,

Angela M. Woolard

Angela M. Woolard
Regulatory and Certificates Analyst III

cc: Mr. Kevin Bowman, FERC
Service List

encl(s)/



ATLANTIC COAST PIPELINE, LLC
ATLANTIC COAST PIPELINE
Docket Nos. CP15-554-000 &
CP15-554-001

and



DOMINION TRANSMISSION, INC.
SUPPLY HEADER PROJECT
Docket No. CP15-555-000

Supplemental Information
January 19, 2017

Prepared by



January 19, 2017

TABLE OF CONTENTS

1.0 PROJECT DESCRIPTION AND ENGINEERING DATA1

1.1 Project Modifications.....1

1.2 Minor Route Adjustments.....1

1.3 Route 58 Horizontal Directional Drill1

1.4 New Contractor Yard for Spread 4A4

1.5 Description of Air Related Facilities Updates4

1.6 Reduction of Permanent Wetland Impacts at Aboveground Facility Sites.....4

APPENDICES

Appendix A	Minor Route Adjustment Maps
Appendix B	Updated Alignment Sheets
Appendix C	Minor Route Adjustment Table (Contains Privileged Information – Filed Under Separate Cover)
Appendix D	Route 58 HDD Site-Specific Crossing Plan
Appendix E	Updated Resource Report 9 Tables
Appendix F	Wetland Impacts at Modified Aboveground Facility Sites

ATLANTIC COAST PIPELINE – Docket Nos. CP15-554-000 and CP15-554-001**SUPPLY HEADER PROJECT – Docket No. CP15-555-000****1.0 PROJECT DESCRIPTION AND ENGINEERING DATA****1.1 Project Modifications**

Atlantic Coast Pipeline, LLC (Atlantic) has incorporated the following minor project modifications into the design of the proposed Atlantic Coast Pipeline (ACP):

- 31 minor route adjustments, one of which includes a new horizontal directional drill (HDD);
- 1 new contractor yard;
- minor changes to the proposed meter and regulating (M&R) facilities; and
- modifications to aboveground facility footprints to reduce wetland impacts.

Descriptions of these minor project modifications are provided in Sections 1.2 through 1.6 below. No minor project modifications are proposed by Dominion Transmission, Inc. (DTI) for the Supply Header Project (SHP).

1.2 Minor Route Adjustments

Since filing its Application on September 18, 2015 (FERC Accession Number 20150918-5212), Atlantic has refined and optimized the existing routes for the ACP. Table 1.2-1 lists 31 newly identified minor adjustments to existing routes to avoid or minimize environmental or land use impacts, resolve constructability issues, or address landowner requests. Twenty-nine of the route adjustments have no new landowners. For each route adjustment, the table provides the beginning and ending mileposts (MPs) and the length in miles. An aerial photo map set depicting the route adjustments is provided in Appendix A. Updated alignment sheets are provided in Appendix B. A Privileged version of Table 1.2-1 that contains additional information about the environmentally sensitive features noted in the table is being filed under separate cover as Appendix C.

1.3 Route 58 Horizontal Directional Drill

Atlantic's Gateway Route Adjustment (listed in Table 1.2-1 and depicted in the map set provided in Appendix A) includes a new HDD crossing at approximate MP 71.0 of the AP-3 pipeline to avoid the Hampton Roads Airport Wetland Mitigation Bank and cross West Military Highway. A preliminary site-specific crossing plan for this HDD (i.e., Route 58 HDD) is included in Appendix D. Atlantic anticipates filing an HDD design report in April 2017.

TABLE 1.2-1

Minor Route Adjustments Incorporated into the Proposed Atlantic Coast Pipeline Route

Route Adjustment Name	Approximate MP	State	New Landowner	Length of Route Adjustment (miles)	Rationale
AP-1 Mainline					
I-79 HDD	13.4 to 14.3	WV	No	1.0	Adjustment to I-79 crossing to accommodate I-79 HDD.
Tallow Knob	70.1 to 70.5	WV	No	0.8	Adjustment to avoid an environmentally sensitive feature.
Cloverlick	74.1 to 74.6	WV	No	1.0	Adjustment to avoid an environmentally sensitive feature.
Michael Mountain	80.4 to 80.6	WV	No	0.2	Adjustment to avoid an environmentally sensitive feature.
Poplar Hollow	96.7 to 98.0	VA	No	2.2	Adjustment to reduce impacts on the George Washington National Forest and karst features, as well as to minimize the crossing of side-sloping topography. In addition, the adjustment has a significant reduction in length over the existing filed route.
Ramsey's Draft	114.2 to 115.3	VA	No	1.4	Adjustment to avoid a livestock/farm paddock operation. In addition, the adjustment has a significant reduction in length over the existing filed route.
Dryden Road	125.1 to 125.4	VA	No	0.3	Adjustment to avoid a septic field.
Hawkins Pond Lane	152.5 to 152.7	VA	No	0.2	Adjustment to avoid an environmentally sensitive feature.
Orebank Creek	153.4 to 153.9	VA	No	0.5	The route in this area incorporated a previous route adjustment designed to avoid a cultural resource site. Subsequent evaluation of the site indicates it is not a historic property. For this reason, and as requested by the landowner, Atlantic proposes to shift to its previous alignment. In addition, the adjustment has a reduction in length over the existing filed route.
Mount Torrey Road	156.8 to 157.4	VA	No	0.6	Adjustment to accommodate an HDD pullback.
Stagebridge Road	170.1 to 170.8	VA	No	0.9	Adjustment to avoid structures, septic fields, wells, and springs.
Piney Green	240.4 to 240.9	VA	No	0.4	Adjustment to avoid an environmentally sensitive feature.
Emporia Power Line	292.8 to 293.3	VA	No	0.5	Adjustment to minimize impacts on an environmentally sensitive feature.
AP-2 Mainline					
Big John Store Road	2.6 to 3.1	NC	No	0.5	Adjustment to avoid an environmentally sensitive feature and minimize impacts on forested land.
Grapevine Road	14.5 to 15.4	NC	No	1.1	Adjustment to avoid a future quarry development.
Halifax Airport Solar	16.0 to 17.0	NC	Yes	0.9	Adjustment to avoid a solar lease.
Healthy Plains Church	71.6 to 72.2	NC	Yes	0.6	Adjustment to avoid an identified dump site with unknown exposure.
Contentnea Creek	73.5 to 74.0	NC	No	0.5	Adjustment to the Contentnea Creek HDD alignment.
Neuse River	98.0 to 99.0	NC	No	1.3	Adjustment to avoid an environmentally sensitive feature.
Hannah Creek	100.9 to 101.3	NC	No	0.5	Adjustment to minimize impacts on an environmentally sensitive feature.
Cape Fear River	130.3 to 131.2	NC	No	1.0	Adjustment to avoid an environmentally sensitive feature and increase collocation with an existing utility corridor. In addition, the adjustment has a reduction in length over the existing filed route.
Johnson Road	150.6 to 151.0	NC	No	0.5	Adjustment to avoid a solar facility.
Duke Crossover 1	151.6 to 152.1	NC	No	0.5	Adjustment to avoid a large ditch.
Duke Crossover 2	154.4 to 154.8	NC	No	0.1	Adjustment to comply with Duke Energy's right-of-way use guidelines.
Chickenfoot Road	159.2 to 159.4	NC	No	0.2	Adjustment to comply with Duke Energy's right-of-way use guidelines.
Borrow Site	176.8 to 177.7	NC	No	0.9	Adjustment for a future borrow site.

TABLE 1.2-1

Minor Route Adjustments Incorporated into the Proposed Atlantic Coast Pipeline Route

Route Adjustment Name	Approximate MP	State	New Landowner	Length of Route Adjustment (miles)	Rationale
AP-3 Lateral					
Pruden Boulevard	59.0 to 59.3	VA	No	0.3	Adjustment to avoid a future church.
Nansemond Pullback	65.1 to 65.4	VA	No	0.3	Adjustment to avoid a tidal wetland.
Gateway	71.0 to 72.7	VA	No	2.7	Adjustment to avoid a wetland mitigation bank and mitigation site; includes the new Route 58 HDD. In addition, the adjustment has a significant reduction in length over the existing filed route.
East Ditch	71.2 to 71.8	VA	No	0.5	Adjustment to minimize impacts on a salvage yard business. In addition, the adjustment has a reduction in length over the existing filed route.
Norfolk Southern	76.0 to 76.8	VA	No	0.6	Adjustment to avoid an environmentally sensitive feature.

1.4 New Contractor Yard for Spread 4A

Atlantic identified a new contractor yard to support construction activities along the AP-1 mainline. Contractor Yard 4-C is located adjacent to the proposed pipeline route at approximate MP 71.7 in Pocahontas County, West Virginia. The contractor yard encompasses approximately 7.7 acres of agricultural land (see Figure 1.4-1).

1.5 Description of Air Related Facilities Updates

Some of the Resource Report 9 tables needed updates to incorporate changes resulting from ongoing engineering design of above ground equipment and changes to pipeline construction equipment assumptions. The updated tables are included in Appendix E. The engineering design changes affect M&R stations, valve sites, and pigging facilities. Detailed descriptions of the changes are provided in the table notes. These minor changes do not materially impact applicable regulatory requirements.

1.6 Reduction of Permanent Wetland Impacts at Aboveground Facility Sites

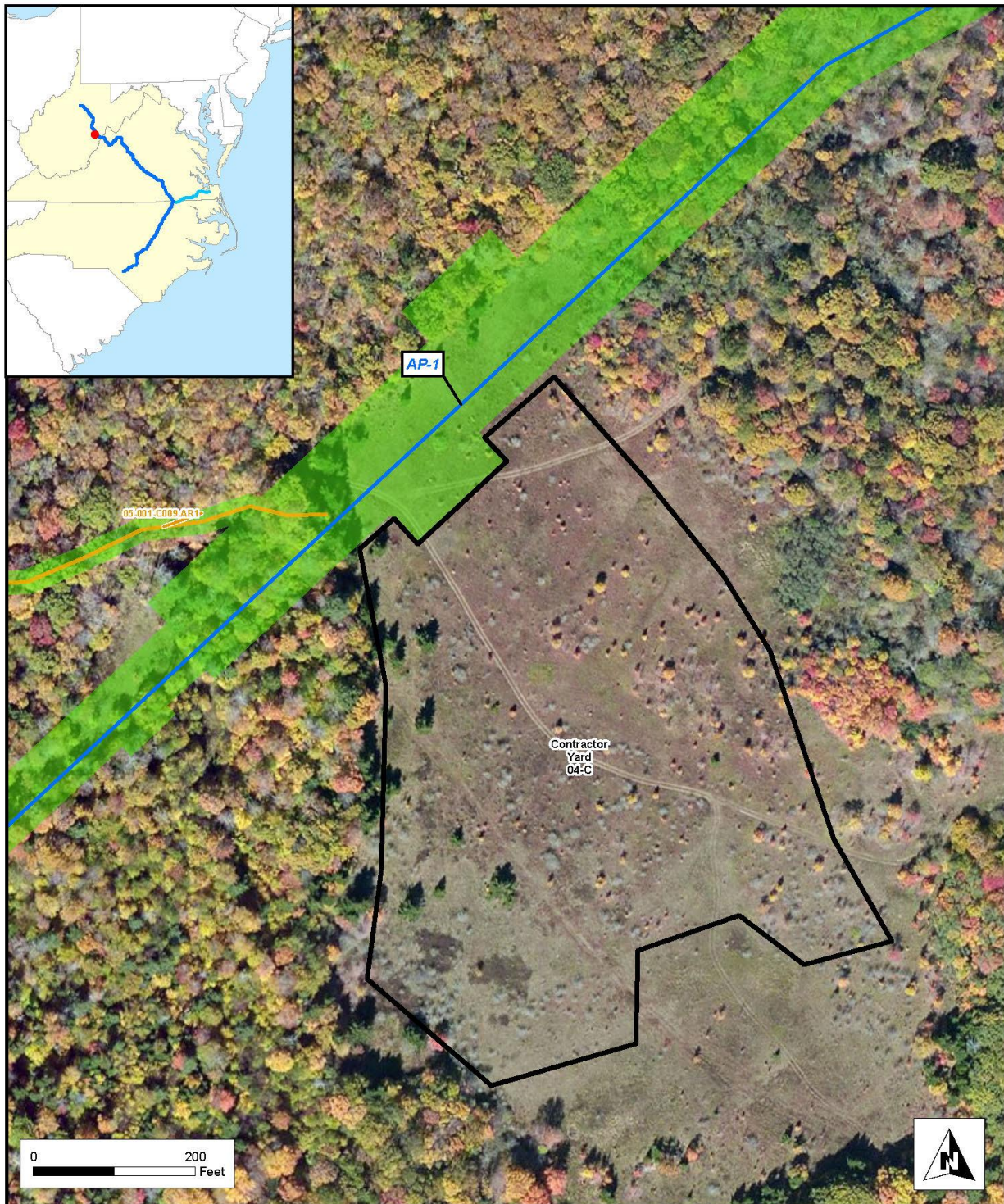
Atlantic has reassessed the site layout at facility sites and has determined that elimination and further reduction of permanent wetlands impacts could be achieved at the Long Run M&R and Elizabeth River M&R sites. Proposed permanent wetlands impacts have been eliminated at the Long Run M&R site and a reduction in proposed permanent wetlands impacts from 0.14 acre to 0.08 acre was achieved at the Elizabeth River M&R site.

Atlantic and DTI are also providing clarification on permanent wetlands impacts at the Marts Launcher and Receiver (L&R) site. This site was previously recorded as having permanent wetlands impacts associated with both the ACP and SHP when in fact the impact footprints overlapped one another. Atlantic and DTI have modified the workspace for the ACP and SHP to be consistent with one another, and the proposed wetlands impacts are now only reported to be associated with ACP. While the total amount of permanent wetlands impacts proposed by ACP increased by 0.07 acres; the cumulative impact between the two projects remains the same as previously reported.

Figures illustrating the changes at the Elizabeth River M&R, Long Run M&R, and Marts L&R sites are provided in Appendix F. Table 2.3.4-3 has been revised to reflect the changes in proposed wetlands impacts associated with aboveground facilities for the ACP and SHP.

Facility	County or City/State or Commonwealth	Cowardin Classification ^a	Construction Impacts (acres)	Permanent Impacts (acres)
ATLANTIC COAST PIPELINE				
Elizabeth River M&R Station	City of Chesapeake, Virginia	PFO	0.08	0.08
Marts L&R Station	Harrison County, West Virginia	PEM	0.16	0.16
		PSS	0.02	0.02
	ACP TOTAL		0.28	0.28
SUPPLY HEADER PROJECT				
JB Tonkin Compressor Station	Westmoreland County, Pennsylvania	PEM	0.02	0.02
Marts Junction Pig Launcher	Harrison County, WV	PEM	0.00	0.00
	SHP TOTAL		0.02	0.02

^a Wetland types: PFO = palustrine forested; PSS = palustrine scrub-shrub; PEM = palustrine emergent



Atlantic Coast Pipeline

- Access Road
- ▭ Contractor Yard
- Mainline
- Lateral
- Pipeline Workspace



Atlantic Coast Pipeline
Figure 1.4-1
Contractor Yard 4-C
Pocahontas County, West Virginia

