

**ATLANTIC COAST PIPELINE, LLC ATLANTIC
COAST PIPELINE**

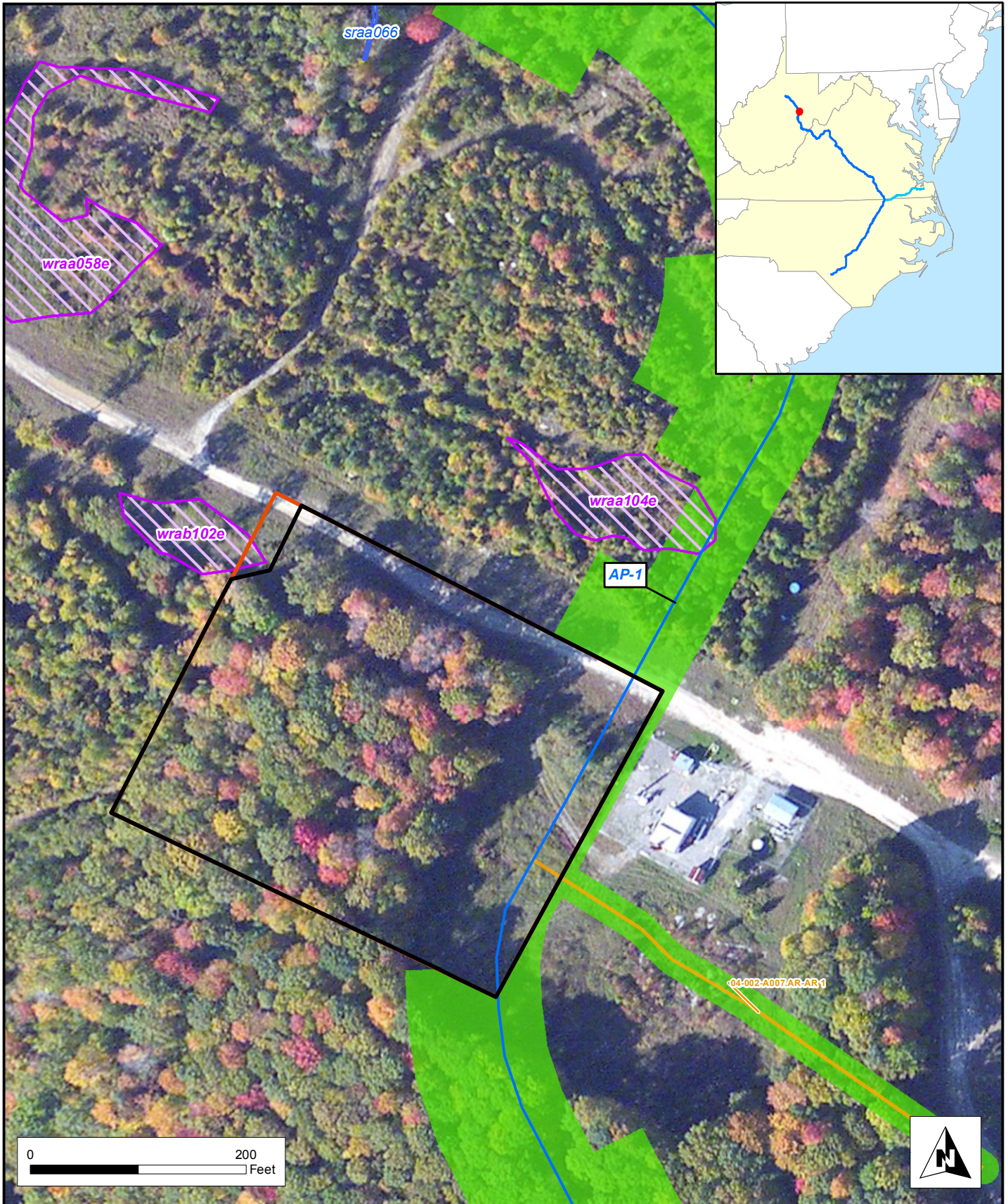
and

**DOMINION TRANSMISSION, INC.
SUPPLY HEADER PROJECT**

**Supplemental Filing
January 19, 2017**

APPENDIX F

Wetland Impacts at Modified Aboveground Facility Sites

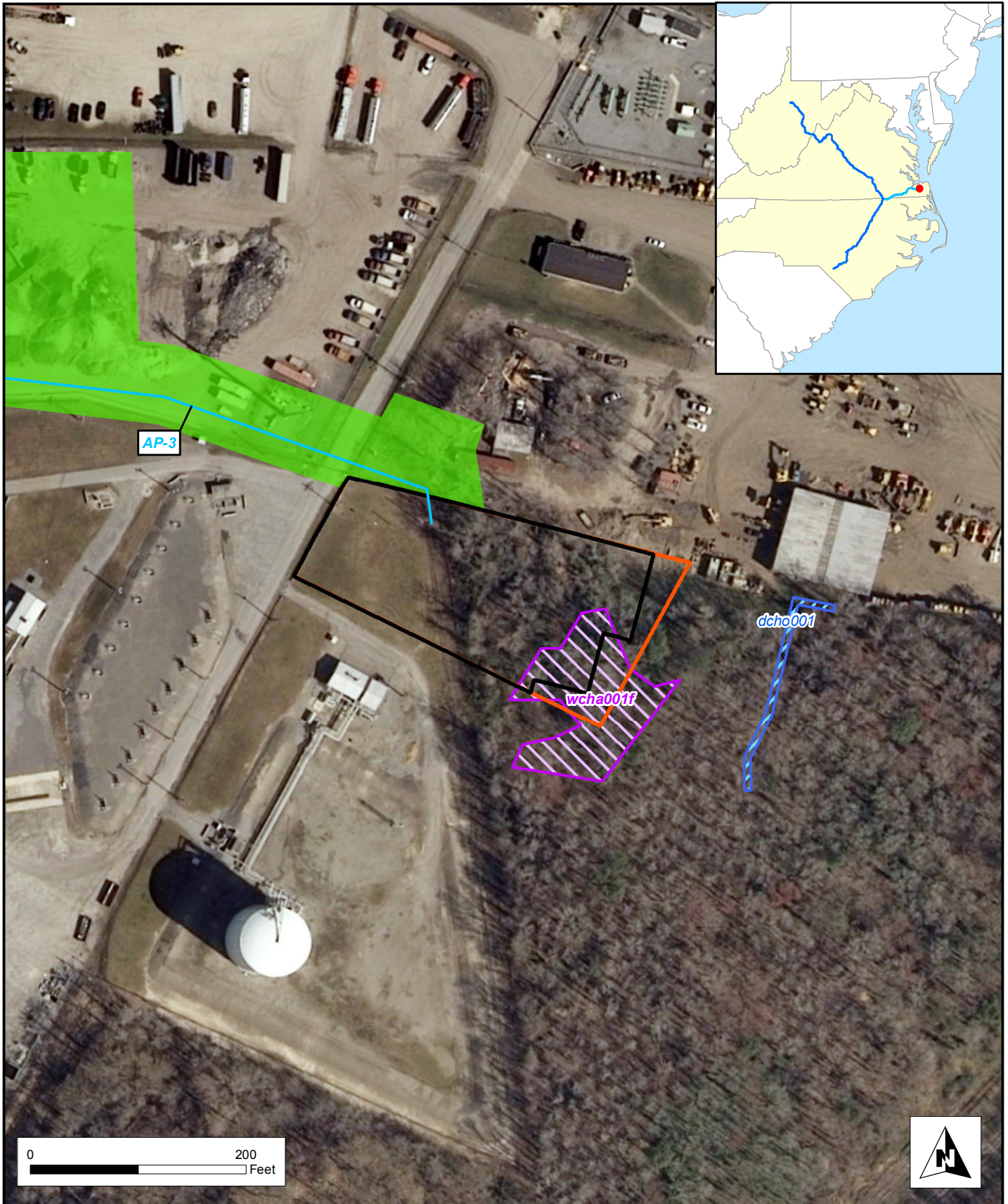


- Milepost
- Atlantic Coast Pipeline**
- Mainline
- Lateral
- Pipeline Workspace
- Access Road
- ▭ Long Run M&R Site Footprint
- ▭ Previous M&R Site Footprint
- ▨ Surveyed Waterbody
- ▨ Surveyed Wetland



Atlantic Coast Pipeline
Figure 1.6-1
 Long Run M&R Station
 Randolph County, West Virginia



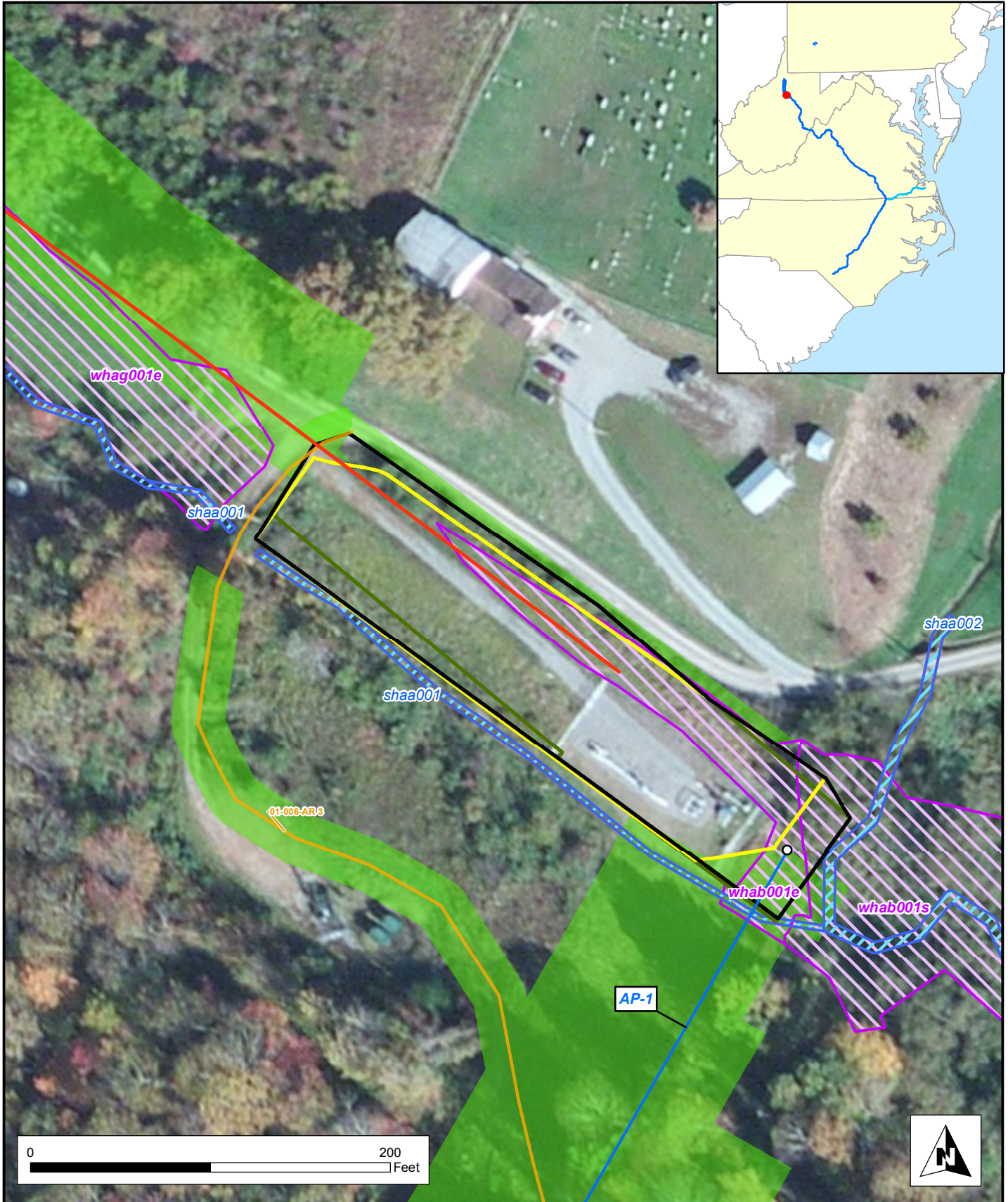


- Atlantic Coast Pipeline**
- Mainline
 - Lateral
 - Pipeline Workspace
 - Elizabeth M&R Site Footprint
 - Previous M&R Site Footprint
 - Surveyed Waterbody
 - Surveyed Wetland
 - Access Road



Atlantic Coast Pipeline
Figure 1.6-2
 Elizabeth River M&R Station
 City of Chesapeake, Virginia





- Supply Header TL-635
- Marts L&R Site Footprint
- Atlantic Coast Pipeline**
- Previous L&R Site Footprint (ACP)
- Mainline
- Previous L&R Site Footprint (SHP)
- Lateral
- Pipeline Workspace
- Surveyed Waterbody
- Access Road
- Surveyed Wetland



**Atlantic Coast Pipeline and
Supply Header Project**
Figure 1.6-3
 Marts L&R Station
 Harrison County , West Virginia

