

**ATLANTIC COAST PIPELINE, LLC
ATLANTIC COAST PIPELINE**

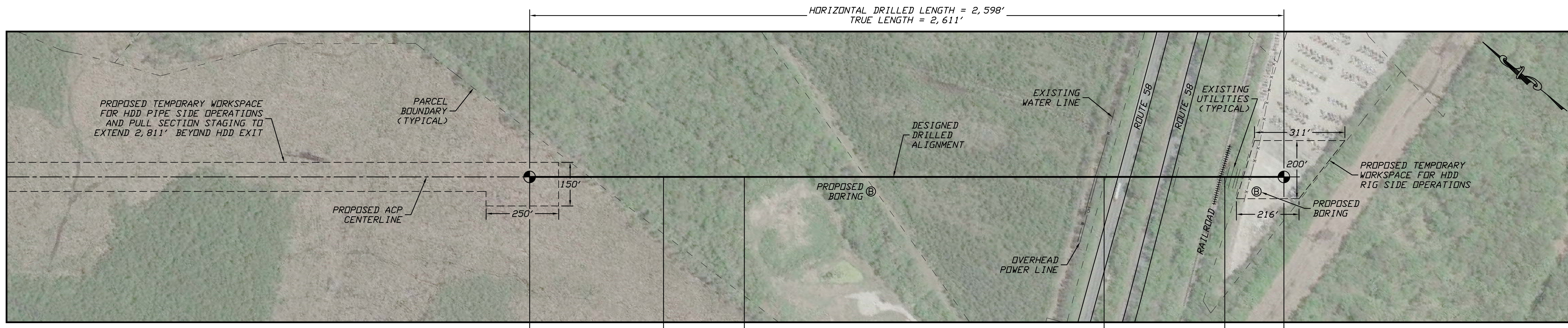
and

**DOMINION TRANSMISSION, INC.
SUPPLY HEADER PROJECT**

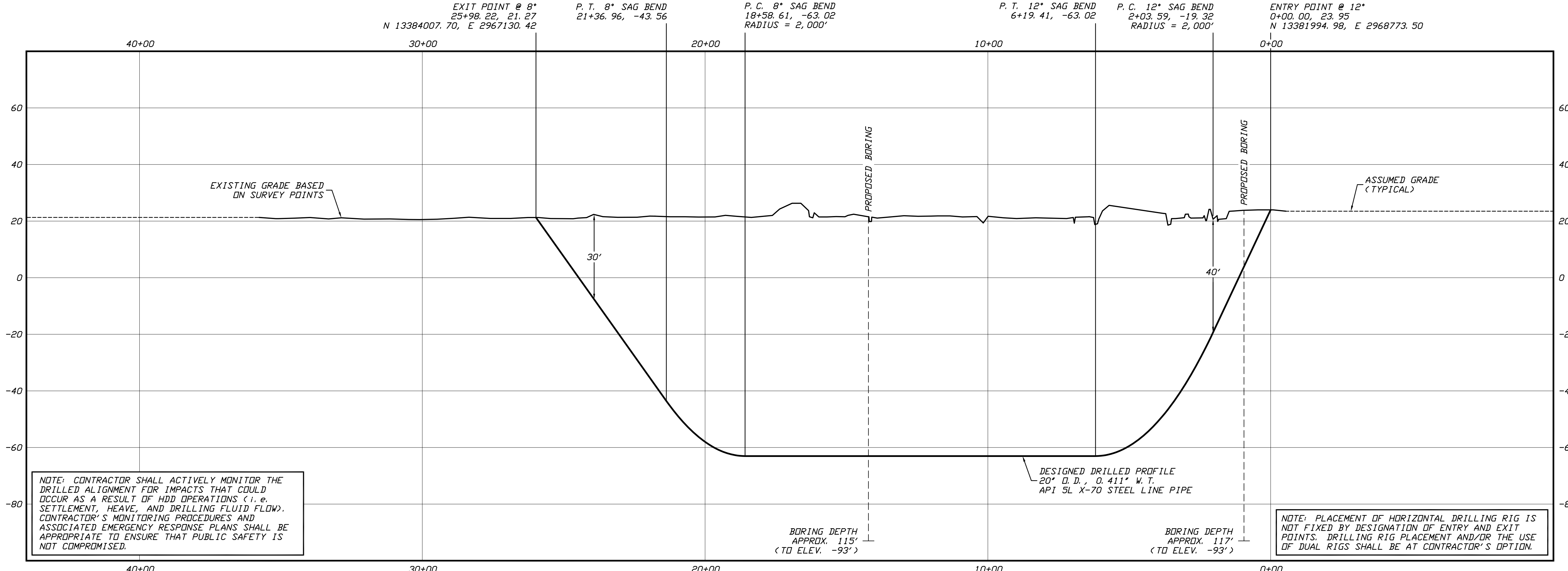
**Supplemental Filing
January 19, 2017**

APPENDIX D

Route 58 HDD Site-Specific Crossing Plan



PLAN
SCALE: 1"=200'



PROFILE
SCALE: 1"=200' HORIZONTAL
1"= 20' VERTICAL

NOTE: CONTRACTOR SHALL ACTIVELY MONITOR THE DRILLED ALIGNMENT FOR IMPACTS THAT COULD OCCUR AS A RESULT OF HDD OPERATIONS (i.e. SETTLEMENT, HEAVE, AND DRILLING FLUID FLOW). CONTRACTOR'S MONITORING PROCEDURES AND ASSOCIATED EMERGENCY RESPONSE PLANS SHALL BE APPROPRIATE TO ENSURE THAT PUBLIC SAFETY IS NOT COMPROMISED.

NOTE: PLACEMENT OF HORIZONTAL DRILLING RIG IS NOT FIXED BY DESIGNATION OF ENTRY AND EXIT POINTS. DRILLING RIG PLACEMENT AND/OR THE USE OF DUAL RIGS SHALL BE AT CONTRACTOR'S OPTION.

GENERAL LEGEND

- DRILLED PATH ENTRY/EXIT POINT

TOPOGRAPHIC SURVEY NOTES

1. TOPOGRAPHIC SURVEY DATA PROVIDED BY GAI CONSULTANTS, CANDANBURG, PENNSYLVANIA.
2. NORTHINGS AND EASTINGS ARE IN U.S. SURVEY FEET REFERENCED TO UTM COORDINATES, ZONE 17, NAD 83.
3. ELEVATIONS ARE IN FEET REFERENCED TO NAVD 88.

DRILLED PATH NOTES

1. DRILLED PATH STATIONING IS IN FEET BY HORIZONTAL MEASUREMENT AND IS REFERENCED TO CONTROL ESTABLISHED FOR THE DRILLED SEGMENT.
2. DRILLED PATH COORDINATES REFER TO CENTERLINE OF PILOT HOLE AS OPPOSED TO TOP OF INSTALLED PIPE.

PILOT HOLE TOLERANCES

THE PILOT HOLE SHALL BE DRILLED TO THE TOLERANCES LISTED BELOW. HOWEVER, IN ALL CASES, RIGHT-OF-WAY RESTRICTIONS AND CONCERN FOR ADJACENT FACILITIES SHALL TAKE PRECEDENCE OVER THESE TOLERANCES.

1. ENTRY POINT: UP TO 10 FEET FORWARD OR BACK FROM THE DESIGNED ENTRY POINT; UP TO 5 FEET RIGHT OR LEFT OF THE DESIGNED ALIGNMENT
2. EXIT POINT: UP TO 10 FEET SHORT OR 30 FEET LONG RELATIVE TO THE DESIGNED EXIT POINT; UP TO 5 FEET RIGHT OR LEFT OF THE DESIGNED ALIGNMENT
3. ELEVATION: UP TO 5 FEET ABOVE AND 30 FEET BELOW THE DESIGNED PROFILE
4. ALIGNMENT: UP TO 10 FEET RIGHT OR LEFT OF THE DESIGNED ALIGNMENT
5. CURVE RADIUS: NO LESS THAN 1,350 FEET BASED ON A 3-JOINT AVERAGE (RANGE 2 DRILL PIPE)

PROTECTION OF EXISTING FACILITIES

CONTRACTOR SHALL UNDERTAKE THE FOLLOWING STEPS PRIOR TO COMMENCING DRILLING OPERATIONS.

1. CONTACT THE UTILITY LOCATION/NOTIFICATION SERVICE FOR THE CONSTRUCTION AREA.
2. POSITIVELY LOCATE AND STAKE ALL EXISTING UNDERGROUND FACILITIES. ANY FACILITIES LOCATED WITHIN 10 FEET OF THE DESIGNED DRILLED PATH SHALL BE EXPOSED.
3. MODIFY DRILLING PRACTICES AND DOWNHOLE ASSEMBLIES AS NECESSARY TO PREVENT DAMAGE TO EXISTING FACILITIES.

PRELIMINARY

ATLANTIC COAST PIPELINE PROJECT

PLAN AND PROFILE
20-INCH PIPELINE CROSSING OF ROUTE 58
BY HORIZONTAL DIRECTIONAL DRILLING

LOCATION: SUFFOLK, VIRGINIA

REVISION	DRAWING LABEL	DATE	APPROVED	CHECKED	DRAWN
P0	ROUTE 58	01/09/17	JSP	DMP	KMN

NO.	DATE	REVISION DESCRIPTION	BY	CHKD	APP.

Jeffrey S. Puckett, P.E.
Consulting Engineer

2424 East 21st Street
Tulsa, Oklahoma 74114

PROJECT NO.
Dominion\1508

AP3-072