

ATLANTIC COAST PIPELINE PROJECT

COMMUNICATION TOWER (TYPICAL)

SITE PLAN

EROSION & SEDIMENT CONTROL PLAN

EROSION & SEDIMENT CONTROL PLAN NARRATIVE

THE FOLLOWING EROSION AND SEDIMENT CONTROL PLAN SHALL PROVIDE A TYPICAL STANDARD FOR BEST MANAGEMENT PRACTICES FOR THE ATLANTIC COAST PIPELINE COMMUNICATION TOWER SITES. THE COMMUNICATION TOWER SITE LAYOUT MAY NOT HAVE ALL EQUIPMENT AND COMPONENTS DEPICTED, BUT THE SITE FOOTPRINT SHALL BE CONSISTENT. COLLECTIVELY, THERE ARE 3 SITES IN WEST VIRGINIA, 19 SITES IN VIRGINIA, AND 10 SITES IN NORTH CAROLINA. THE EROSION AND SEDIMENT (E&S) CONTROL MEASURES FOR THE COMMUNICATION TOWER CONSTRUCTION ACTIVITIES PRIMARILY CONSIST OF BUT ARE NOT LIMITED TO ROCK CONSTRUCTION ENTRANCE, COMPOST FILTER SOCK, SILT FENCE, AND TEMPORARY AND PERMANENT SEEDING AND MULCHING. BEST MANAGEMENT PRACTICES (BMP) SPECIFICATIONS FOR THE E&S CONTROL PLAN (E&SCP) ARE TO BE UTILIZED BY THE CONSTRUCTION CONTRACTOR ACCORDING TO THE PROVIDED PLAN.

GENERAL CONSTRUCTION NOTES:

- DISCHARGES ORIGINATING FROM OFF-SITE SOURCES, WHICH FLOW THROUGH OR ACROSS THE AREAS DISTURBED BY CONSTRUCTION, MAY BE DIVERTED AROUND THE ACTIVE CONSTRUCTION AREA WHENEVER POSSIBLE.
- PERFORM PERMANENT OR TEMPORARY SOIL STABILIZATION WITHIN 7 DAYS WHEN SITE IS AT FINAL GRADE AND ON SITES THAT ARE NOT AT FINAL GRADE, BUT WILL REMAIN DORMANT FOR MORE THAN 14 DAYS.
- DUE TO VARYING SITE CONDITIONS, ADDITIONAL SEDIMENT CONTROL BMPs MAY BE NECESSARY BEYOND THE MEASURES SHOWN ON THE E&S CONTROL PLAN.
- AT MINIMUM, ALL BMPs ARE TO BE INSPECTED ONCE EVERY SEVEN CALENDAR DAYS AND WITHIN 24 HOURS AFTER ANY STORM EVENT GREATER THAN 0.5-INCH PER 24-HOUR PERIOD DURING THE ENTIRE PROJECT. ALL REQUIRED PERMITS MUST BE OBTAINED PRIOR TO STARTING WORK.
- DURING CONSTRUCTION, THE CONTRACTOR SHALL BE RESPONSIBLE FOR CONSTRUCTION, STABILIZATION AND MAINTENANCE OF ALL EXISTING AND PROPOSED SITE EROSION & SEDIMENTATION CONTROL DEVICES AND FACILITIES.
- AS SITE SPECIFIC CONDITIONS MAY WARRANT, THE E&S PLAN MAY REQUIRE MINOR MODIFICATIONS TO ENSURE PROPER PROTECTION OF RECEIVING WATERS. THE RESPECTIVE PROJECT ENVIRONMENTAL INSPECTOR (EI) WILL IDENTIFY SITE SPECIFIC AREAS WHERE A CERTAIN BMP MODIFICATION(S) IS NECESSARY TO EITHER OMIT OR ENHANCE BMPs IN SUCH AREAS. THIS PROCESS ENTAILS THE EI TO IDENTIFY LOCATIONS WHERE BMPs WILL NEED TO BE ALTERED, SUBSTITUTED OR OMITTED AND CONTACT THE DOMINION COMPLIANCE SPECIALIST TO REVIEW PROPOSED CHANGES. UPON REVIEW AND APPROVAL BY THE DOMINION COMPLIANCE SPECIALIST, THE EI WILL REDLINE, DATE, AND SIGN THE E&SCP DRAWING(S) DEPICTING THE REDLINE CHANGE(S). ONCE THIS PROCESS IS COMPLETED, THE EI WILL NOTIFY THE DEP OF SUCH MINOR MODIFICATION REDLINE AMENDMENTS AS REQUIRED BY THE GENERAL PERMIT.

BMP INSTALLATION AND REMOVAL SEQUENCE

THE STAGING OF EARTHMOVING ACTIVITIES FOR THIS PROJECT IS A GENERAL DESCRIPTION OF THE WORK REQUIRED. ALL WORK SHALL BE COMPLETED IN ACCORDANCE WITH COMPANY STANDARDS, THE STATE DEPARTMENT OF ENVIRONMENTAL QUALITY REGULATIONS AND ALL OTHER APPLICABLE FEDERAL, STATE OR LOCAL REQUIREMENTS.

THE APPROVED EROSION AND SEDIMENTATION CONTROL PLAN INCLUDING THE SOIL EROSION CONTROL DRAWINGS AND NARRATIVE SHALL BE AVAILABLE ON SITE AT ALL TIMES DURING EARTH DISTURBANCE.

- STAKE/FLAG ALL LIMITS OF DISTURBANCE FOR CONSTRUCTION ACTIVITIES, CLEARLY IDENTIFYING WETLAND AND STREAM EDGES. INSTALL SIGNS TO DESIGNATE THE AREA TO IDENTIFY IMPORTANT PROJECT ATTRIBUTES SUCH AS WETLAND/STREAM BOUNDS, EXCLUSION AREAS ETC.
- INSTALL ROCK CONSTRUCTION ENTRANCES IMMEDIATELY BEFORE INITIAL DISTURBANCES. THE ROCK CONSTRUCTION ENTRANCES TO BE UNDERLAIN BY FILTER FABRIC. ALL CONSTRUCTION TRAFFIC SHOULD USE ONLY ROCK CONSTRUCTION ENTRANCE FOR INGRESS AND EGRESS. ALL MUD OR SEDIMENT TRACKED ONTO THE EXISTING ROADWAY SHALL BE REMOVED BY THE CONTRACTOR AS NECESSARY.
- INSTALL SILT FENCE AND COMPOST FILTER SOCKS AS NECESSARY ALONG THE ACCESS ROADS TO PREVENT SEDIMENT LADEN RUNOFF FROM ENTERING DOWNSTREAM WATER BODIES. MAINTAIN THE ACCESS ROADS AS REQUIRED, ASSOCIATED DITCHES, AND NECESSARY OUTLET PROTECTION.
- PRIOR TO AND SIMULTANEOUS WITH GRADING AND EXCAVATION, INSTALL REMAINING EROSION CONTROL DEVICES (ECD) SHOWN ON THE PLANS.
- COMMENCE GRADING AND ASSOCIATED CUT AND FILL SLOPES. THE EARTH MOVING ACTIVITY SHALL BEGIN IN AREA OF CUT SO THAT THE CUTS CAN BE PLACED IN AREAS OF FILL.

- FINALIZE UTILITY INSTALLATION AND PLACE TOPSOIL ON THE CUT AND FILL AREAS. STABILIZE CUT AND FILL SLOPES, AFTER PLACEMENT OF STOCKPILED TOPSOIL ON EXCAVATED SLOPES, AND AS DIRECTED.
- RE-DISTRIBUTION OF WET SEDIMENT FROM DEVICES AND FACILITIES SHALL ONLY BE PERMITTED UPHILL OF AN EFFECTIVE SEDIMENT CONTROL DEVICE OR FACILITY. SEDIMENT LADEN RUNOFF SHALL NOT BE ALLOWED TO FLOW DIRECTLY INTO WATER BODIES.
- ANY EXPOSED TOPSOIL PILES SHOULD BE STABILIZED & SEEDED PER THE PERMIT REGULATIONS, AND BY TABLES SHOWN ON THE APPROVED EROSION CONTROL PLANS AND MULCHED WITH STRAW AS SPECIFIED BY THE PROJECT OWNER.
- UPON MINIMUM 70% VEGETATIVE STABILIZATION, REMOVE TEMPORARY SEDIMENT CONTROLS. REMOVE ACCUMULATED SEDIMENTS WITHIN THE TRAPS, RE-GRADE TRAPS TO FINAL CONTOURS. STABILIZE SITE PER THE PLANS.

SEQUENCE OF CONSTRUCTION

- LIMITS OF CONSTRUCTION MUST BE FIELD MARKED PRIOR TO CLEARING, INSTALLATION OF SEDIMENT CONTROL MEASURES, CONSTRUCTION, OR OTHER LAND DISTURBING ACTIVITIES.
- DETAILED SEQUENCE OF CONSTRUCTION:
 - INSTALL STABILIZED CONSTRUCTION ENTRANCE.
 - CLEAR AND GRADE FOR INSTALLATION OF ECDs.
 - INSTALL SEDIMENT CONTROL DEVICES.
 - PREPARE TEMPORARY PARKING AND STORAGE AREA(S).
 - CLEAR AND GRUB THE SITE, AS REQUIRED.
 - START CONSTRUCTION OF THE SITE IMPROVEMENTS.
 - BEGIN GRADING THE SITE.
 - INSTALL UTILITIES.
 - PERFORM FINAL GRADING AND INSTALL PERMANENT SEEDING AND PLANTING.
 - REMOVE ALL TEMPORARY EROSION AND SEDIMENT CONTROL DEVICES (ONLY IF SITE IS STABILIZED).

MAINTENANCE SCHEDULE

AFTER FULL REVEGETATION HAS BEEN ACHIEVED, ALL BMPs WILL BE REMOVED AND ANY LAND DISTURBED BY REMOVAL WILL BE PERMANENTLY STABILIZED. UNLESS OTHERWISE SPECIFIED, ALL MAINTENANCE MUST BE COMPLETED IMMEDIATELY AFTER AN INSPECTION IDENTIFIES THAT A BMP IS NOT FUNCTIONING AS REQUIRED.

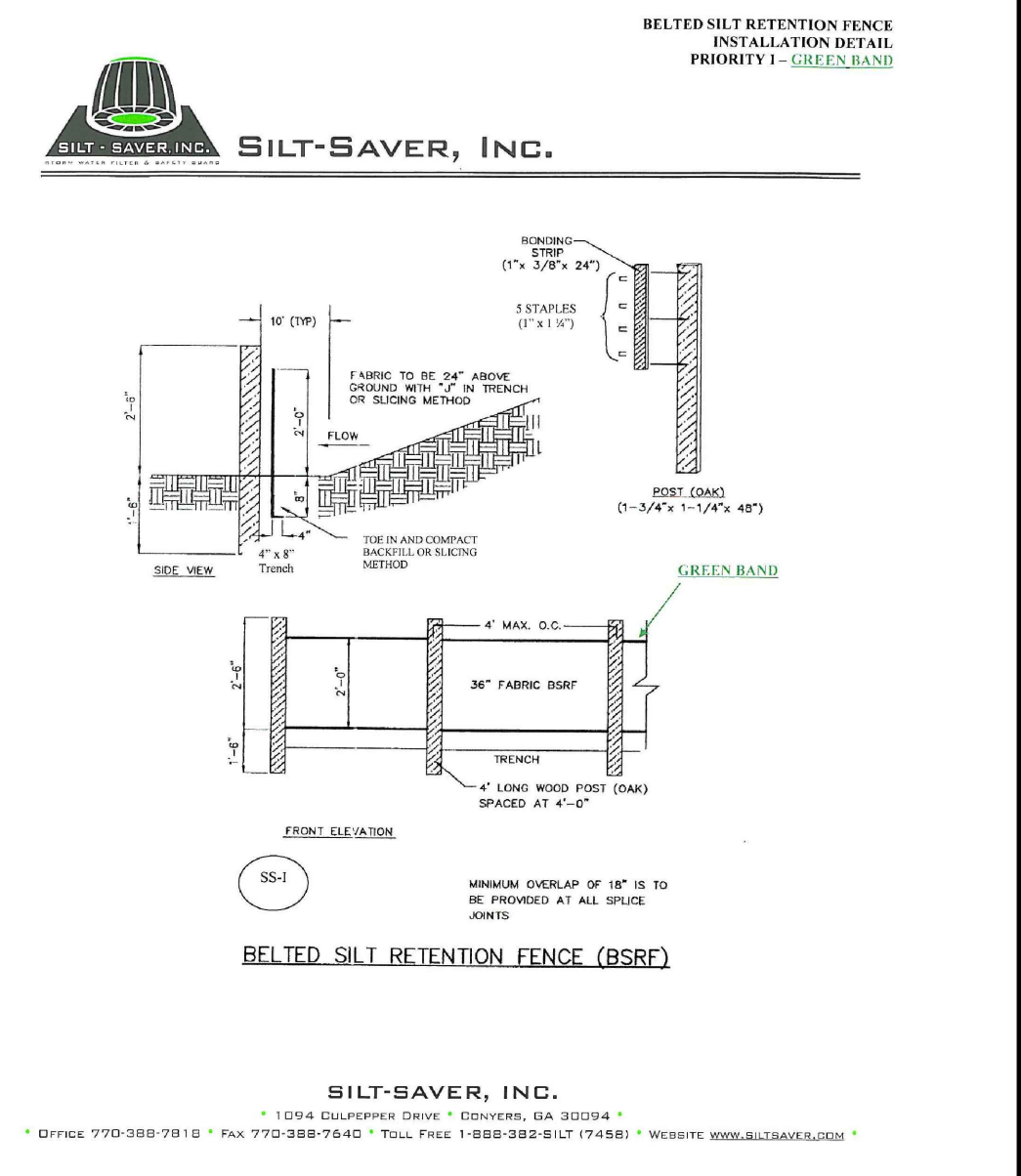
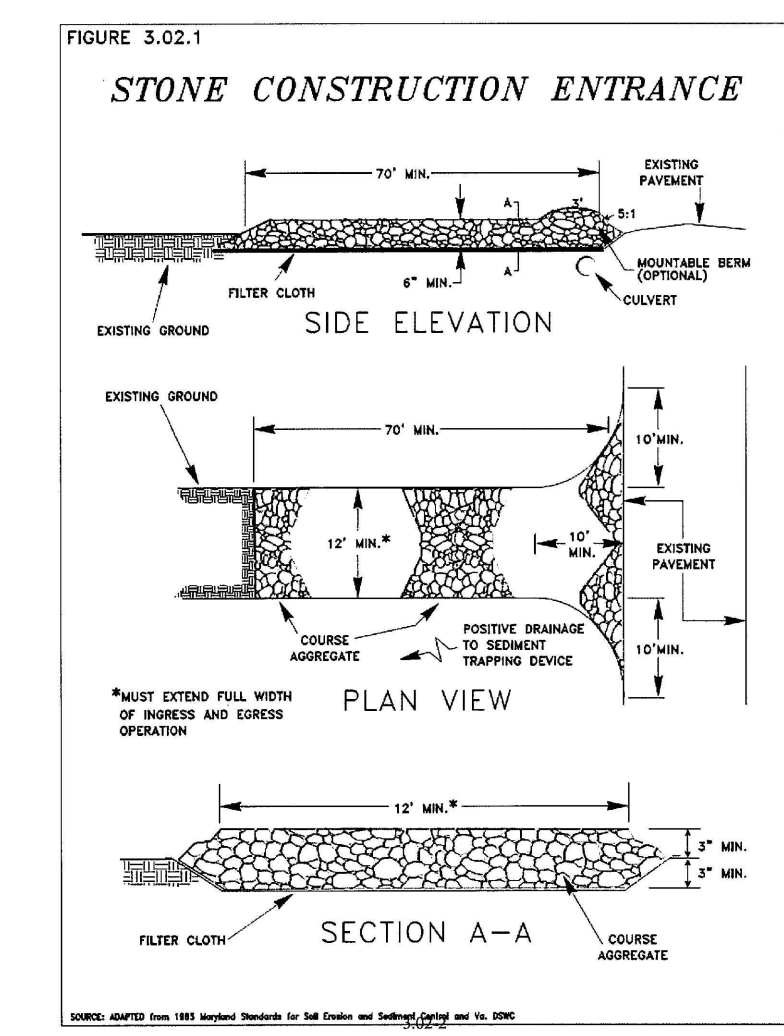
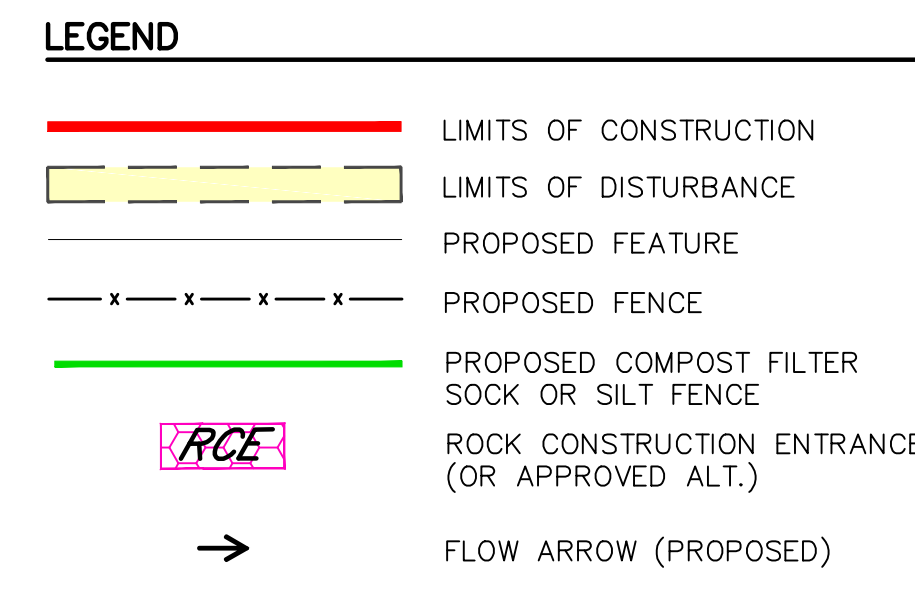
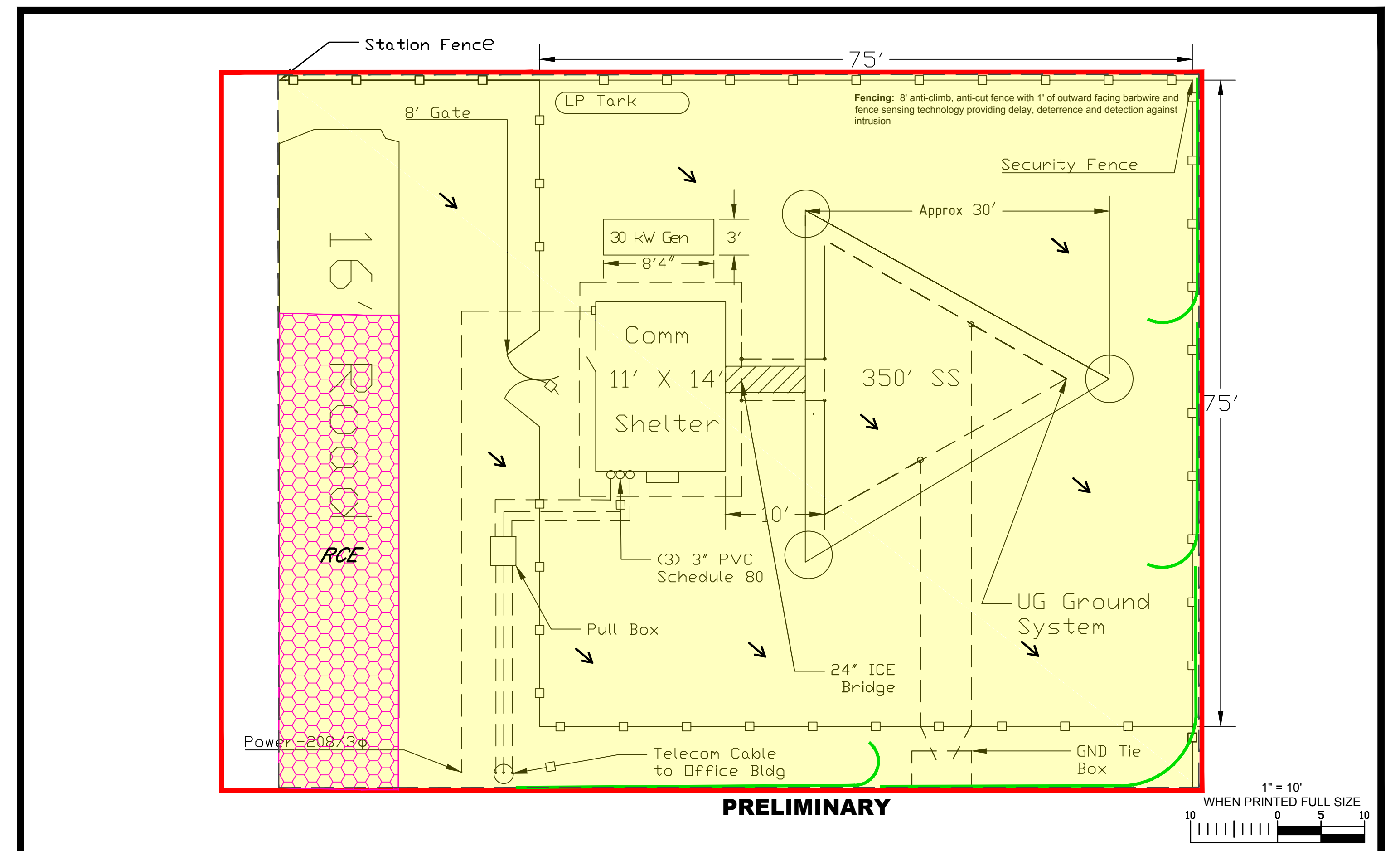
- SEDIMENT MUST BE REMOVED WHERE ACCUMULATION REACHES ONE-HALF THE ABOVE GROUND HEIGHT OF THE CONTROL MEASURE.
- EROSION CONTROL MEASURES, WHICH HAVE BEEN UNDERMINED OR TOPPED, MUST IMMEDIATELY BE REPAIRED.
- OTHER REQUIRED REPAIRS OR MAINTENANCE SHALL BE MADE IMMEDIATELY.
- TEMPORARY AND PERMANENT E&S CONTROL BMPs SHALL BE MAINTAINED AND REPAIRED AS NEEDED TO ASSURE CONTINUED PERFORMANCE OF THEIR INTENDED FUNCTION.

SEEDING AND MULCHING

SEE SEED MIXES SPECIFIED IN THE ACP PROJECT RESTORATION PLAN.

SEEDBED PREPARATION: AREAS TO BE SEEDED SHALL BE DISKED TO A DEPTH OF 4-IN TO 6-IN WHENEVER FEASIBLE, AND SMOOTHLY GRADED.

- IN TOPSOILED AREAS, SOIL TO BE REDISTRIBUTED EVENLY AND STABILIZED PRIOR TO SEEDING.
- STABILIZATION MEASURES SHALL BE INITIATED AS SOON AS PRACTICABLE IN PORTIONS OF THE SITE WHERE CONSTRUCTION ACTIVITIES HAVE TEMPORARILY OR PERMANENTLY CEASED, BUT IN NO CASE MORE THAN 21 DAYS AFTER THE CONSTRUCTION ACTIVITY IN THAT PORTION OF THE SITE HAS PERMANENTLY CEASED.
- WHERE THE INITIATION OF STABILIZATION MEASURES WITHIN 7 DAYS AFTER CONSTRUCTION ACTIVITY TEMPORARILY OR PERMANENTLY CEASES IS PRECLUDED BY SNOW COVER, STABILIZATION MEASURES SHALL BE INITIATED AS SOON AS CONDITIONS ALLOW.
- AREAS WHERE THE SEED HAS FAILED TO GERMINATE ADEQUATELY (UNIFORM PERENNIAL VEGETATIVE COVER WITH A DENSITY OF 70%) WITHIN 30 DAYS, SEEDING AND MULCHING MUST BE RE-SEEDED IMMEDIATELY, OR AS SOON AS WEATHER CONDITIONS ALLOW.



GENERAL NOTES AND COMMENTS:
ERM HAS DEPICTED EROSION AND SEDIMENT CONTROL BEST MANAGEMENT PRACTICES (BMPs) ON THESE PLAN SHEETS PREPARED BY OTHERS FOR USE BY CONTRACTOR TO CONTROL EROSION AND SEDIMENTATION DURING CONSTRUCTION OF THIS PROJECT. ERM IS RESPONSIBLE FOR THE NATURE AND LOCATION OF THE DEPICTED BMPs AS OF THE DATE SIGNED AND SEALED BASED ON THE SOURCE DATA PROVIDED. ERM RETAINS NO RESPONSIBILITY OR LIABILITY FOR INFORMATION DEVELOPED, PREPARED OR OTHERWISE PROVIDED BY OTHERS, OR FOR INACCURACIES OF SOURCE DATA PROVIDED BY OTHERS. ERM ASSUMES NO RESPONSIBILITY OR LIABILITY FOR DESIGNS OR WORK PRODUCTS OF ANY TYPE TO THE EXTENT THAT THEY ARE BASED UPON OR DERIVED FROM SUCH INCORRECT INFORMATION OR DATA.

SYM.	DATE	BY	REVISION INFORMATION	PROJECT/TASK	APP.	SEAL
	03/07/17	WTS	ISSUED FOR REVIEW			

Environmental Resources Management (ERM) logo and drawing details:
 DRAWN: WTS 03/07/17
 CHECKED: -
 APP. FOR BID:
 APP. FOR CONST.:
 SCALE: AS NOTED

Atlantic Coast Pipeline, LLC
 925 White Oaks Blvd. Bridgeport, West Virginia 26330 / 681-842-8000

TITLE: ATLANTIC COAST PIPELINE COMMUNICATION TOWER ESC PLAN - TYPICAL

DISTRICT: COUNTY: STATE: GROUP: DWG. NO. 1-1 REV. 0