

ATLANTIC COAST PIPELINE ENVIRONMENTAL SURVEY

Visual Impact Assessment Report

APPENDIX A

Field Survey Photo Pages

Field Survey Photos, Monongahela National Forest

Unless otherwise specified, all images are in the general direction of the nearest proposed portions of the ACP corridor.



KOP 06: Highlands Scenic Highway near White Low Place



KOP 42: Highlands Scenic Highway at Red Lick Scenic Overlook



KOP 43: Highlands Scenic Highway at Little Laurel Scenic Overlook



KOP 44: WV 28 at ACP Crossing, Looking East (left) and Northwest (right)



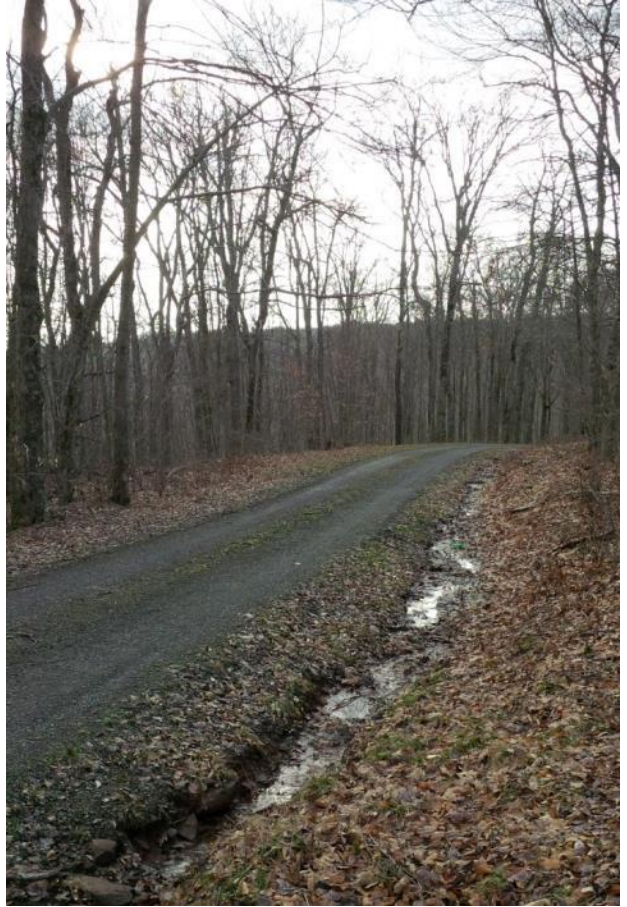
**KOP 45: Greenbrier River Trail near ACP Corridor Crossing looking East (left) and West (right)
Note: Crossing location has shifted south of this position since photos were taken.**



KOP 46: Allegheny Trail Crossing, looking East (top) and West (bottom)



KOP 47:
Entrance to FR 1012 (view of ACP Corridor not accessible)



KOP 49: FR 1026



**Slaty Fork, WV, looking in the direction of KOP 50.
Actual KOP (FR 24) not accessible.**

Field Survey Photos, George Washington National Forest

Unless otherwise specified, all images are in the general direction of the nearest proposed portions of the ACP corridor.



KOP 15: Shenandoah Mountain Trail 4, Looking West (ACP corridor no longer in this view)



KOP 39: Three Ridges Overlook



KOP 40: Bee Mountain (Appalachian Trail)



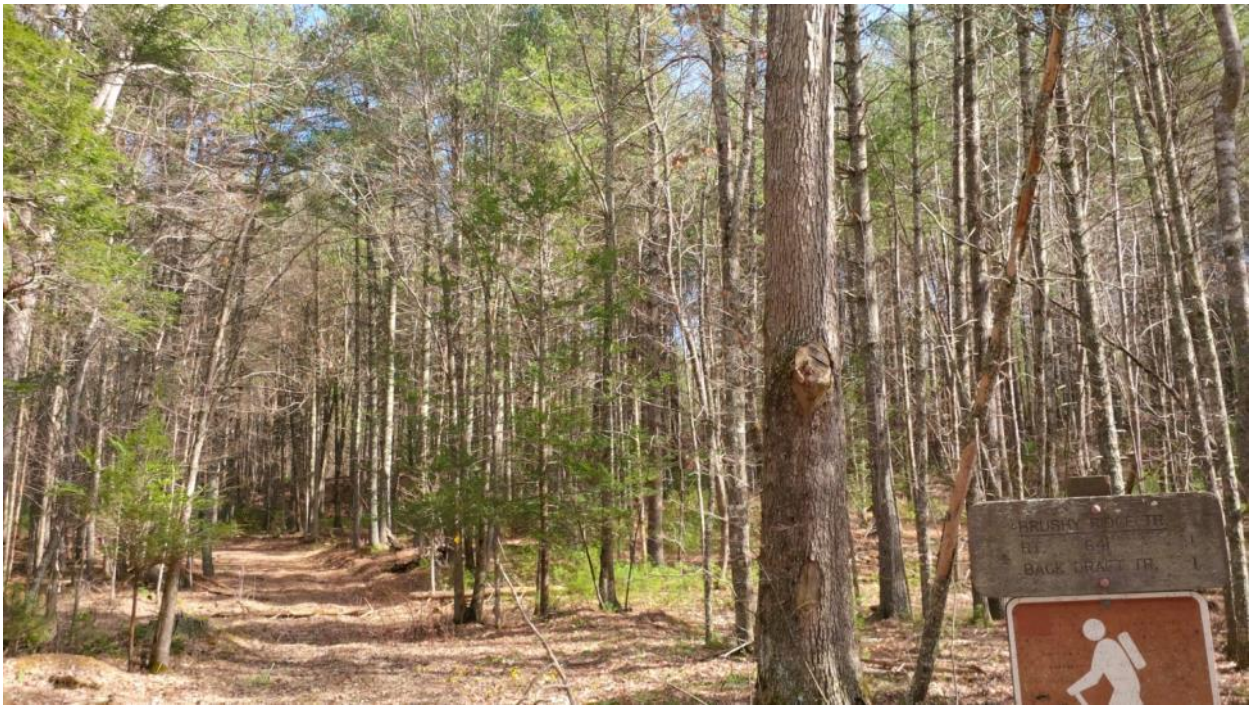
KOP 41: Three Ridges ridge top, Three Ridges Wilderness Area



KOP 52: ACP crossing at FST 718 (Brushy Ridge Trail/Back Draft Trail), looking North (left) and South (top)



KOP 53: Trailhead of FST 717 (Short Ridge Trail)



KOP 54: Trailhead of FST 718 (Brushy Ridge Trail/Back Draft Trail)



KOP 58: Duncan Knob Lookout



KOP 61: Route 624 at Route 625 (Fort Lewis Area)



KOP 62: Route 625 at Route 678 (Fort Lewis Area)



KOP 63: ACP corridor in vicinity of Cowpasture River crossing (looking west)



KOP 64: Near Southern Terminus of Shenandoah Mountain Trail



KOP 65: Devil's Knob Overlook, Wintergreen Resort

Field Survey Photos, Appalachian National Scenic Trail

Unless otherwise specified, all images are in the general direction of the nearest proposed portions of the ACP corridor.



ANST 01: Afton Mountain



ANST 02: Humpback Rocks



ANST 03: Battery Cliffs



ANST 04: Laurel Springs



ANST 05: Cedar Cliffs



ANST 06: Little Ravens Roost



ANST 07: Sherando Valley



ANST 08a: Three Ridges Overlook (North)



ANST 08b: Three Ridges Overlook (South)—Original Location Identified by NPS

Field Survey Photos, Seneca State Forest

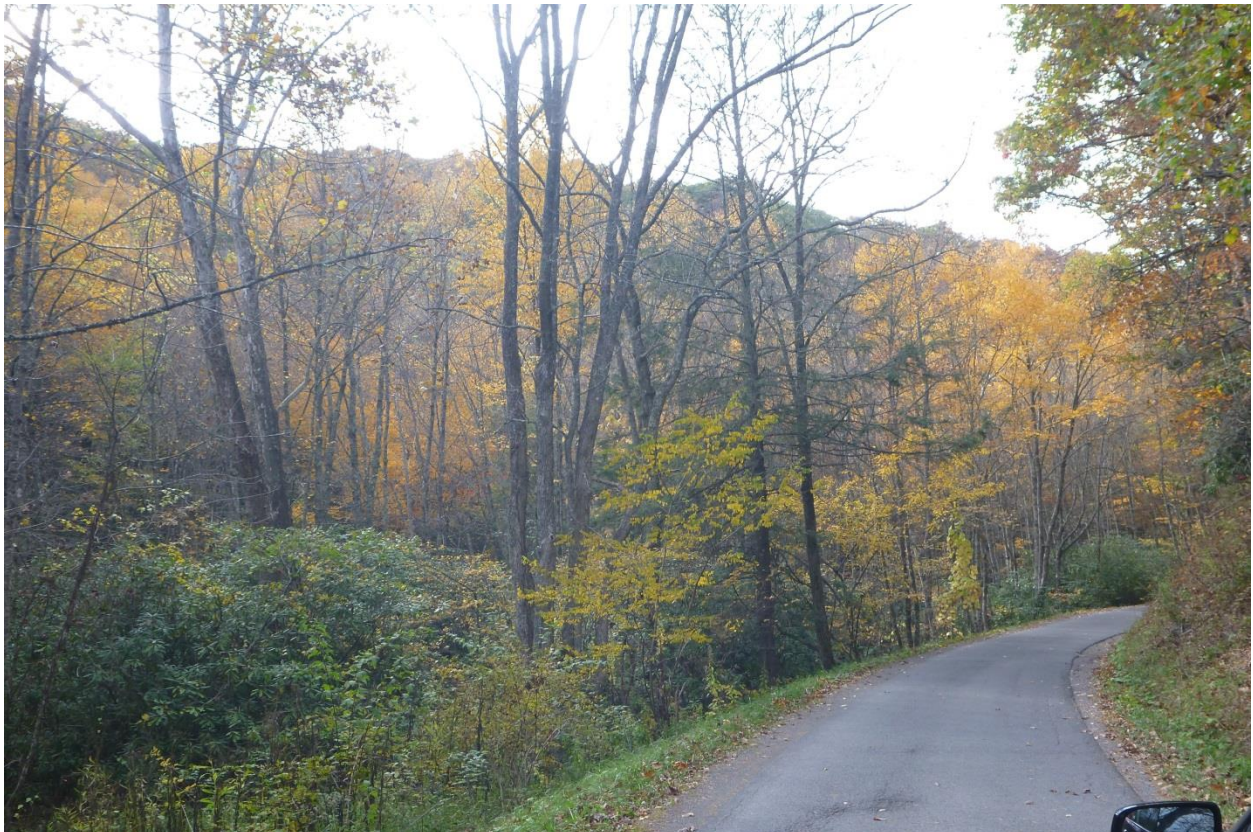
Unless otherwise specified, all images are in the general direction of the nearest proposed portions of the ACP corridor.



SSF 01: Greenbrier River



SSF 02: Public Road 1/8



SSF 03: Laurel Run Road



SSF 04: Loop Road (Public Road 1/10)



SSF 05: Allegheny Trail Looking East (top) and West (bottom)



SSF 06: WV Route 28



SSF 08: WV Route 92