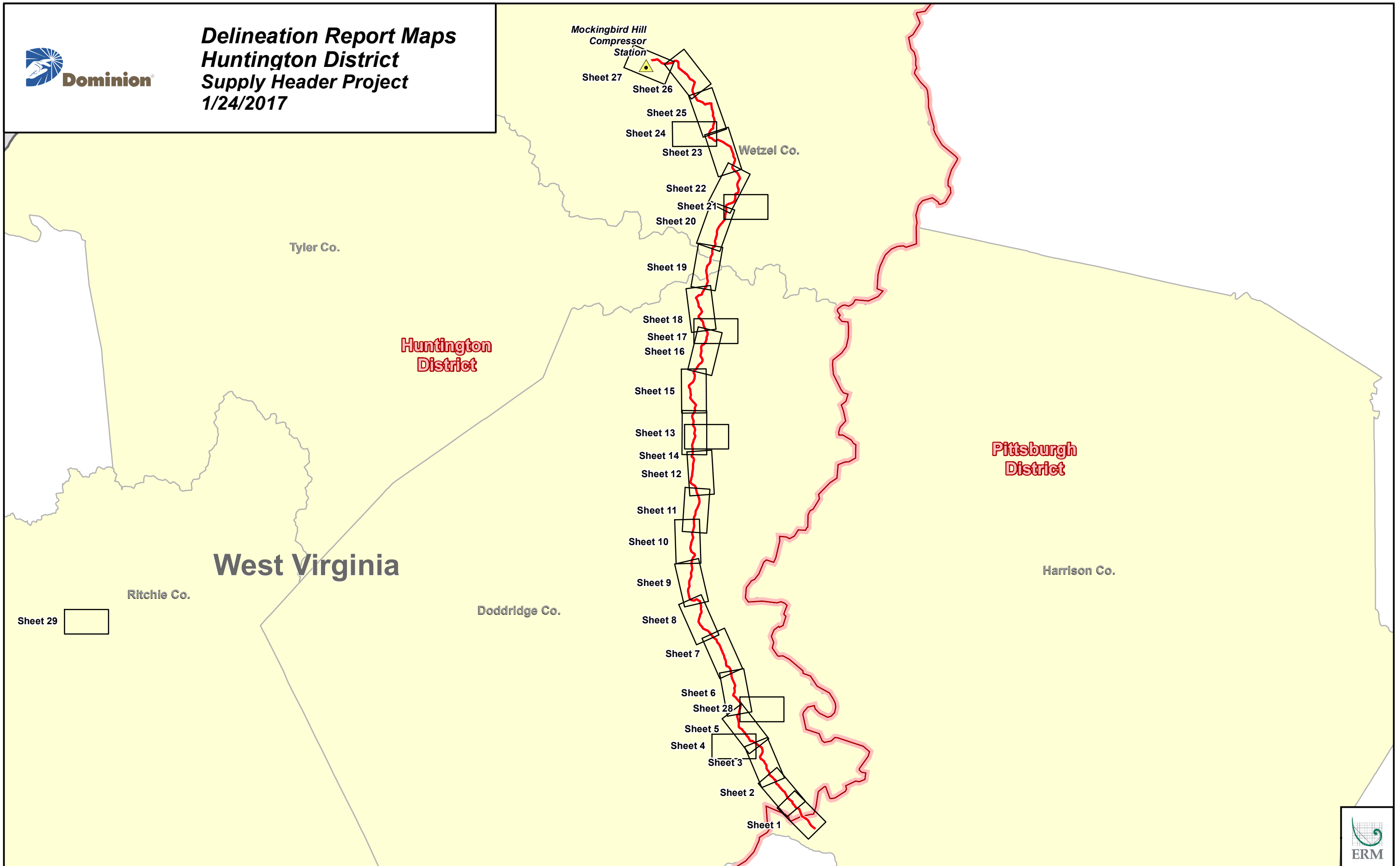
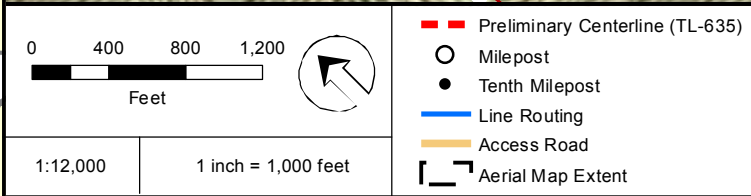
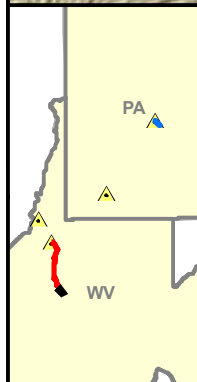
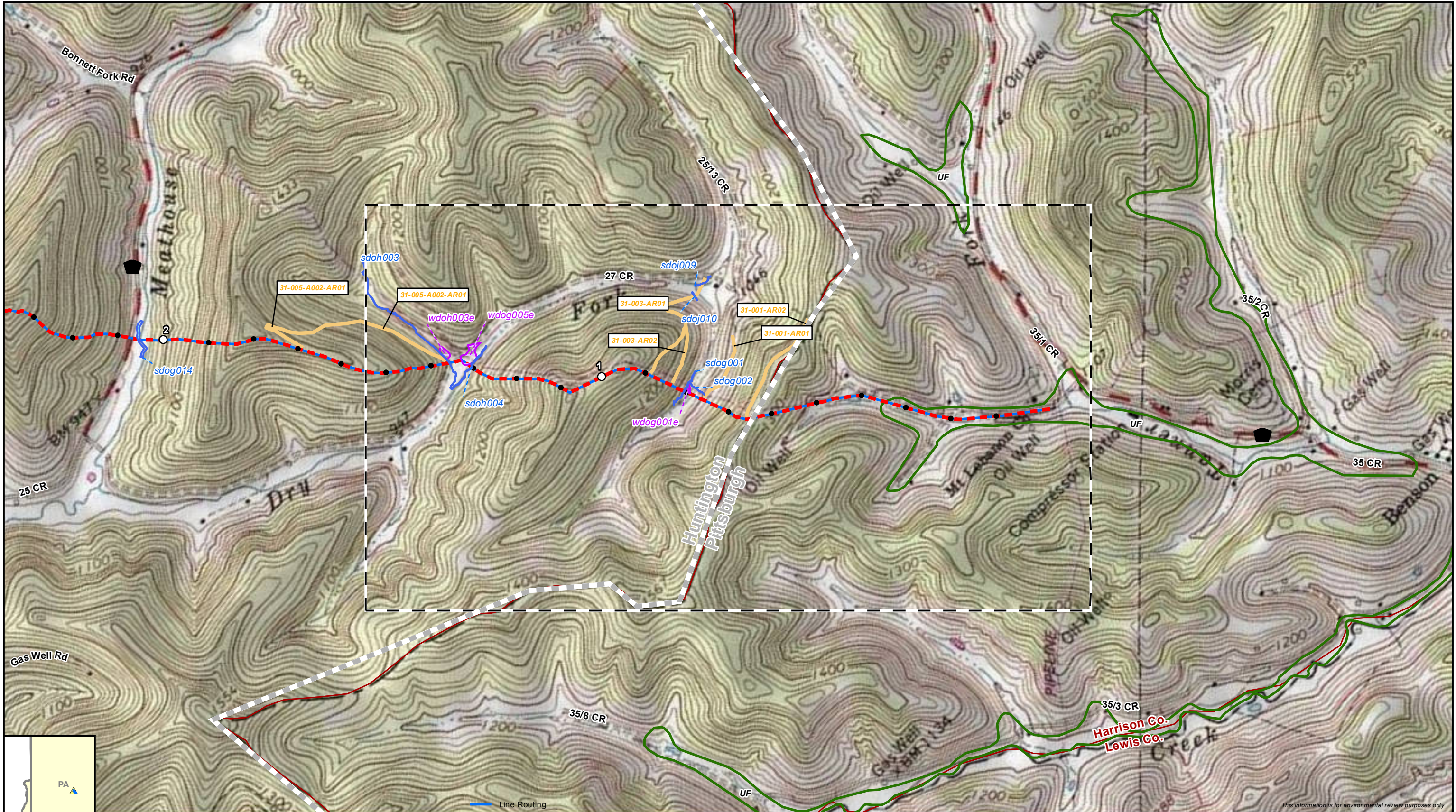




Delineation Report Maps
Huntington District
Supply Header Project
1/24/2017





Hydric Classification	
—	100% Hydric
—	81-99% Hydric
—	61-80% Hydric
—	41-60% Hydric

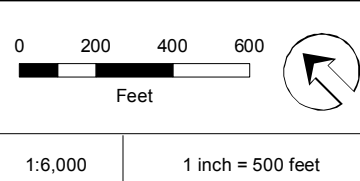
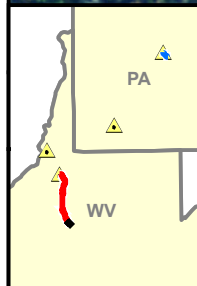


Supply Header Project
Delineation Report Maps - Huntington District
 Doddridge County, West Virginia
 Page 1 of 29

This information is for environmental review purposes only.



This information is for environmental review purposes only.

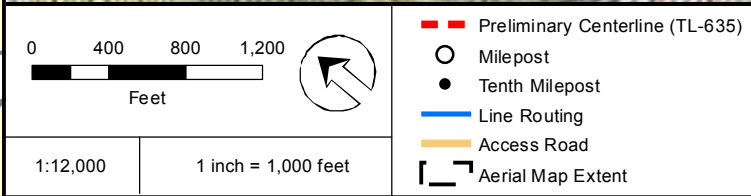
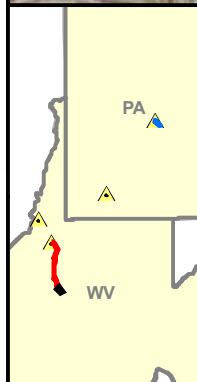


- | | | |
|---------------------------------|-----------------------------|----------------------|
| Preliminary Line Corridor | Parcels | Wetland Data Point |
| Access Road | District Boundary | Upland Data Point |
| Preliminary Centerline (TL-635) | Stream/River - Perennial | Bio Survey Complete* |
| Mileposts | Stream/River - Intermittent | |
| Milepost Tenths | Surveyed Waterbody | |
| | Surveyed Wetland | |
- * Preliminary, subject to revision.

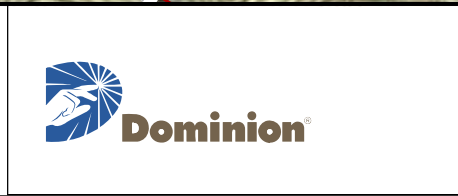


Supply Header Project
Delineation Report Maps - Huntington District
 Doddridge County, West Virginia
 Page 1 of 29





Preliminary Centerline (TL-635)	Hydric Classification
Milepost	100% Hydric
Tenth Milepost	81-99% Hydric
Line Routing	61-80% Hydric
Access Road	41-60% Hydric
Aerial Map Extent	

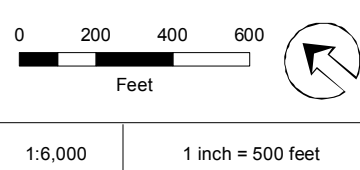
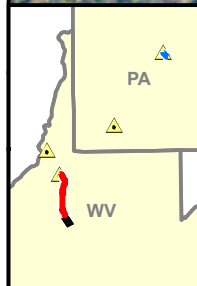


Supply Header Project
Delineation Report Maps - Huntington District
 Doddridge County, West Virginia
 Page 2 of 29

ERM
 DRAWN BY: TAH



Huntington
Pittsburgh
This information is for environmental review purposes only.



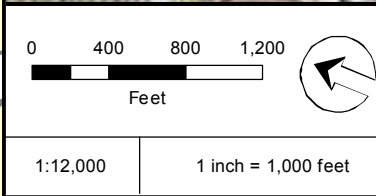
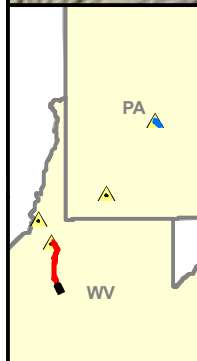
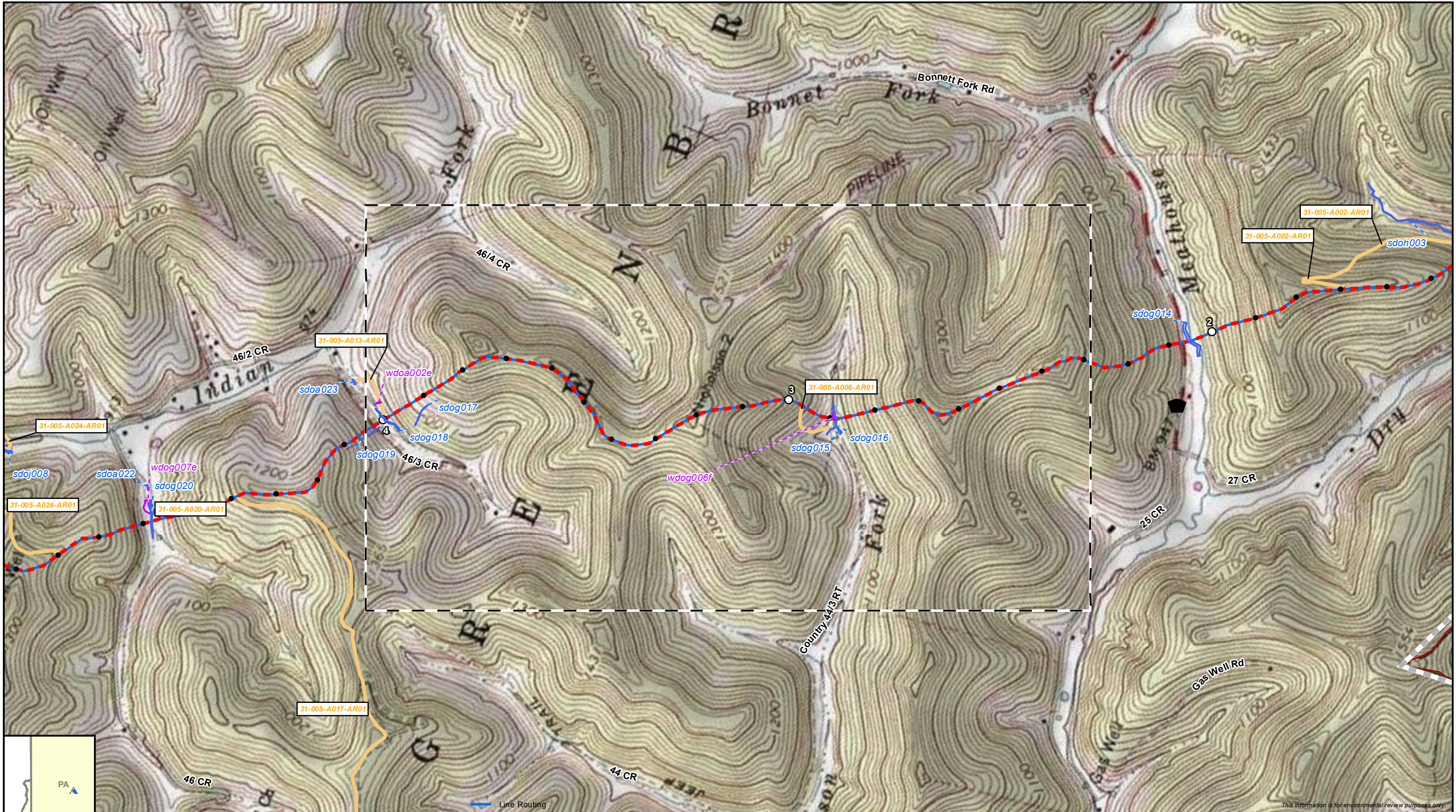
- Preliminary Line Corridor
 - Access Road
 - Preliminary Centerline (TL-635)
 - Mileposts
 - Milepost Tenths
 - Parcels
 - District Boundary
 - Stream/River - Perennial
 - Stream/River - Intermittent
 - Surveyed Waterbody
 - Surveyed Wetland
 - Wetland Data Point
 - Upland Data Point
 - Bio Survey Complete*
- * Preliminary, subject to revision.



Supply Header Project
Delineation Report Maps - Huntington District
 Doddridge County, West Virginia
 Page 2 of 29



DRAWN BY: TAH



- Preliminary Centerline (TL-635)
- Milepost
- Tenth Milepost
- Line Routing
- Access Road
- Aerial Map Extent

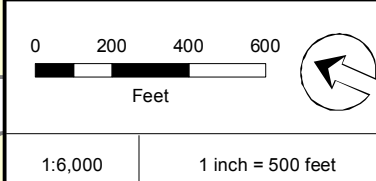
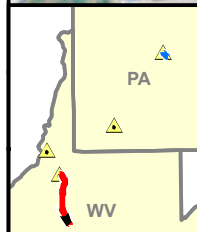
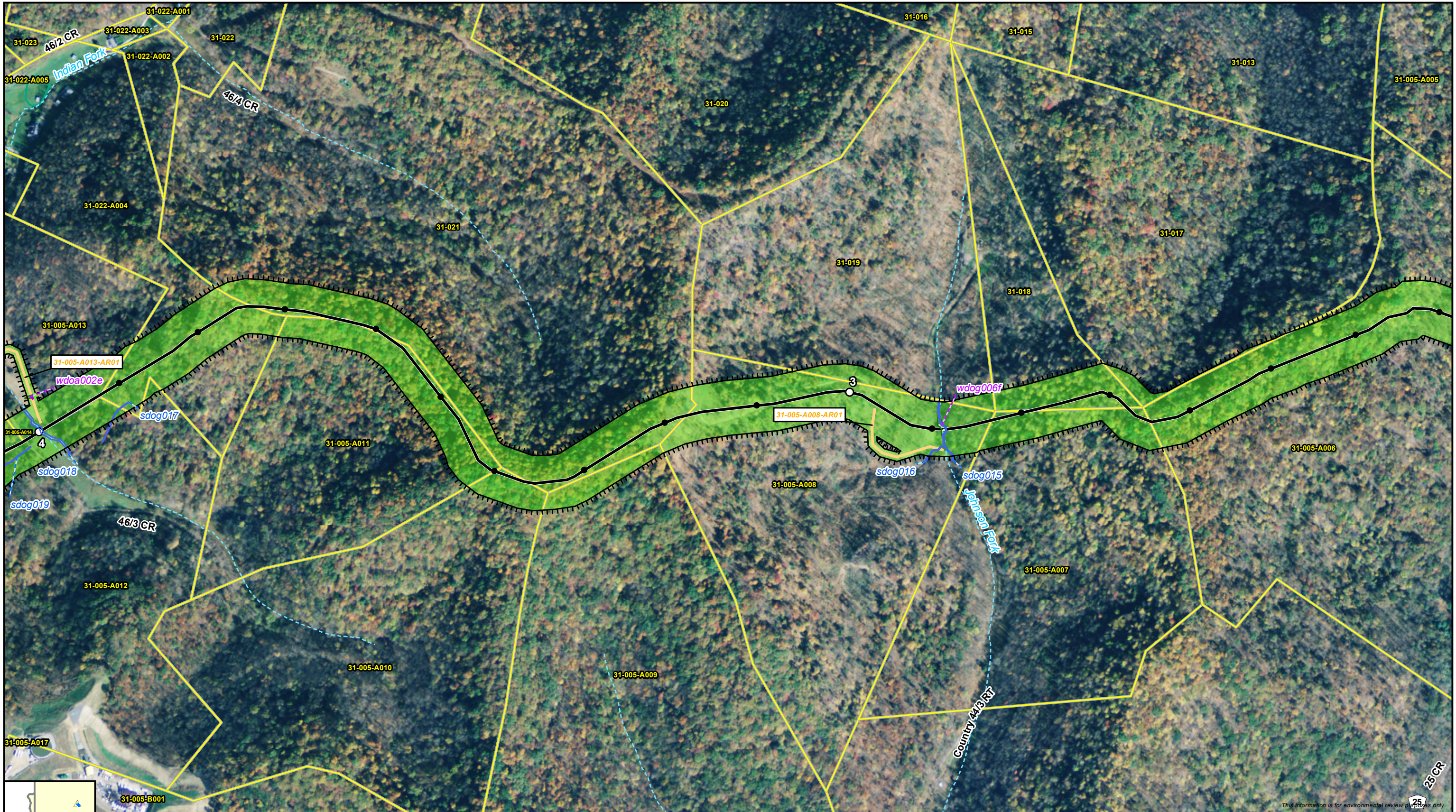
- Hydric Classification**
- 100% Hydric
 - 81-99% Hydric
 - 61-80% Hydric
 - 41-60% Hydric

This information is for environmental review purposes only.



Supply Header Project
Delineation Report Maps - Huntington District
 Doddridge County, West Virginia
 Page 3 of 29





- Preliminary Line Corridor
 - Access Road
 - Preliminary Centerline (TL-635)
 - Mileposts
 - Milepost Tenths
 - Parcels
 - District Boundary
 - Stream/River - Perennial
 - Stream/River - Intermittent
 - NW1 Wetland
 - Surveyed Waterbody
 - Surveyed Wetland
 - Wetland Data Point
 - Upland Data Point
 - Bio Survey Complete*
- * Preliminary, subject to revision.

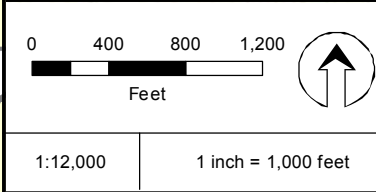
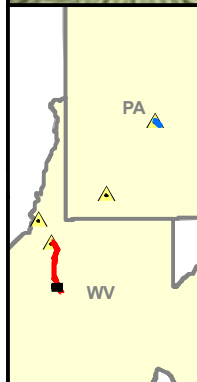


Supply Header Project
Delineation Report Maps - Huntington District
 Doddridge County, West Virginia
 Page 3 of 29



DRAWN BY: TAH

This information is for environmental review purposes only.



<ul style="list-style-type: none"> — Preliminary Centerline (TL-635) ○ Milepost ● Tenth Milepost — Line Routing — Access Road Aerial Map Extent 	<p>Hydric Classification</p> <ul style="list-style-type: none"> 100% Hydric 81-99% Hydric 61-80% Hydric 41-60% Hydric
--	---

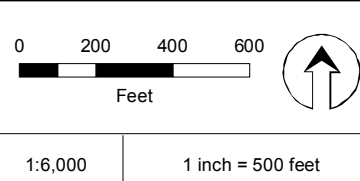
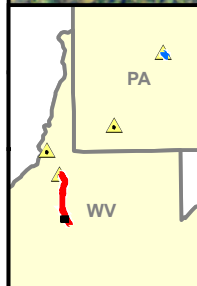


Supply Header Project
Delineation Report Maps - Huntington District
 Doddridge County, West Virginia
 Page 4 of 29





This information is for environmental review purposes only.



- | | | |
|---------------------------------|-----------------------------|----------------------|
| Preliminary Line Corridor | Parcels | Wetland Data Point |
| Access Road | District Boundary | Upland Data Point |
| Preliminary Centerline (TL-635) | Stream/River - Perennial | Bio Survey Complete* |
| Mileposts | Stream/River - Intermittent | |
| Milepost Tenths | Surveyed Waterbody | |
| | Surveyed Wetland | |

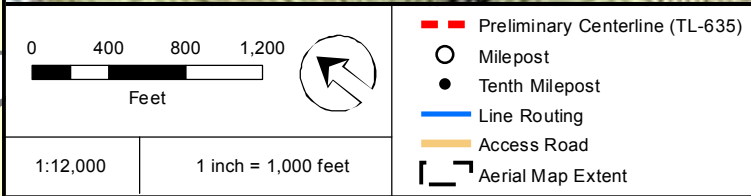
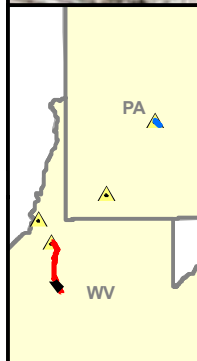
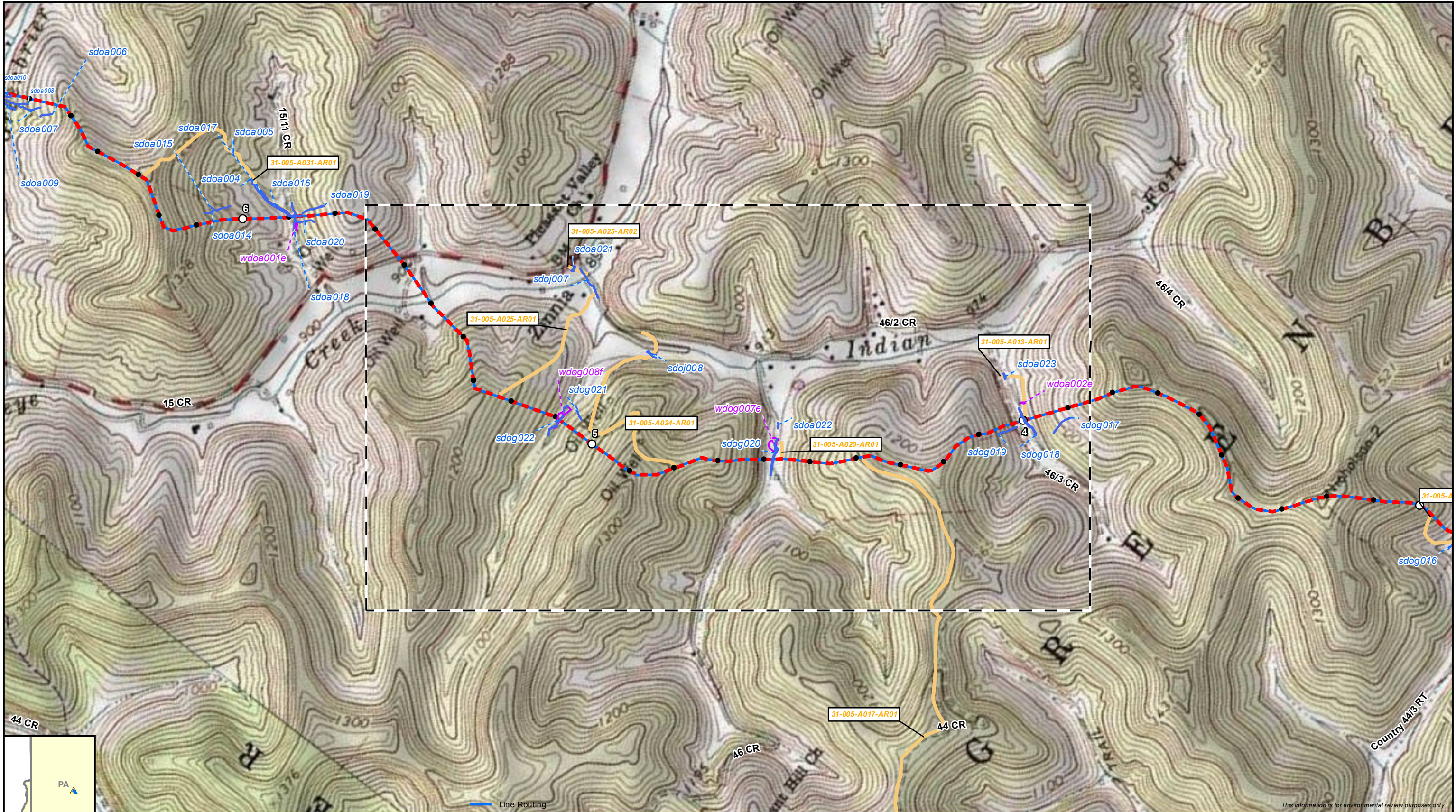
* Preliminary, subject to revision.



Supply Header Project
Delineation Report Maps - Huntington District
 Doddridge County, West Virginia
 Page 4 of 29



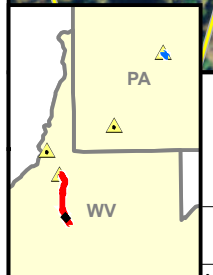
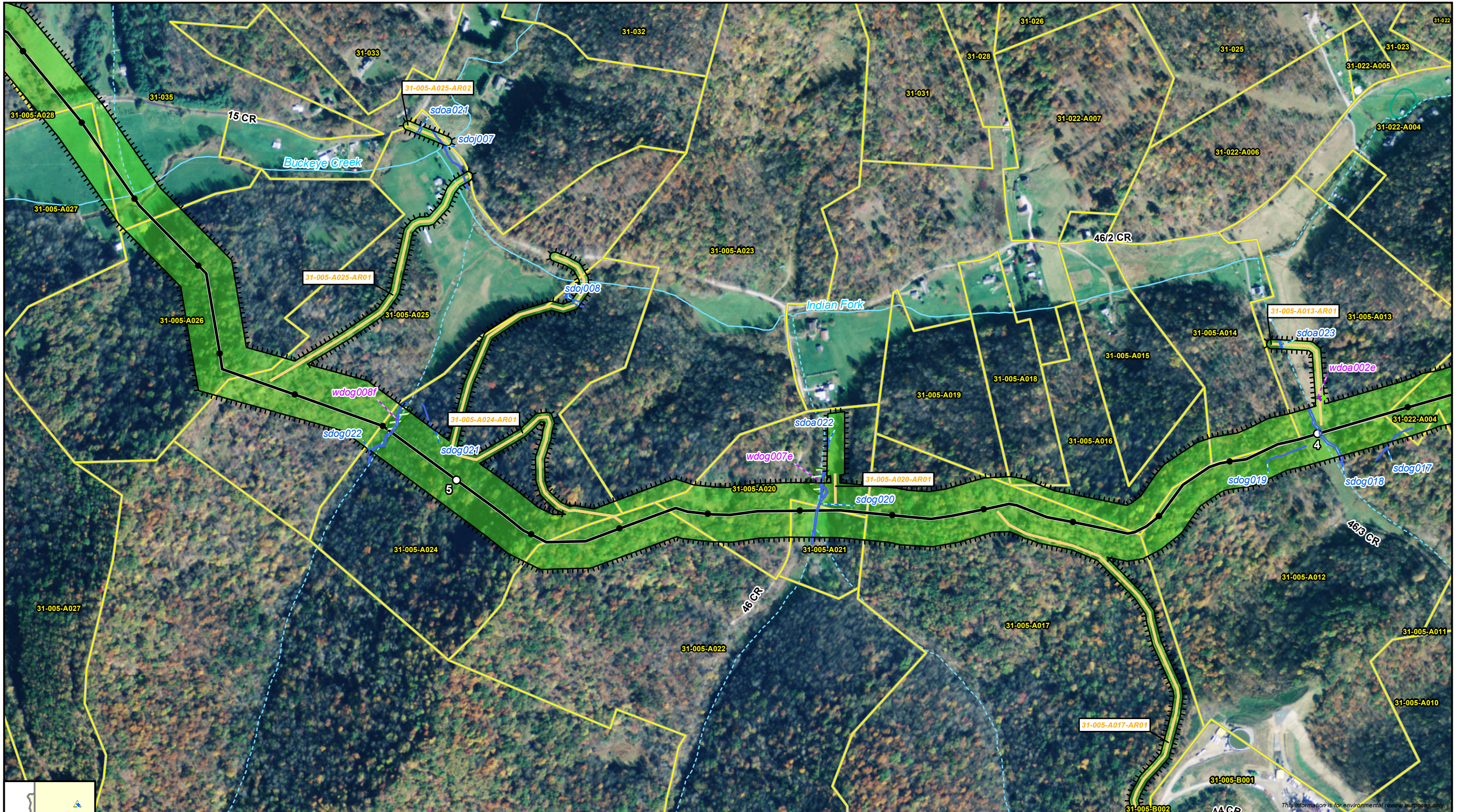
DRAWN BY: TAH



Hydric Classification	
	100% Hydric
	81-99% Hydric
	61-80% Hydric
	41-60% Hydric

Supply Header Project
Delineation Report Maps - Huntington District
 Doddridge County, West Virginia
 Page 5 of 29

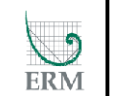
DRAWN BY: TAH

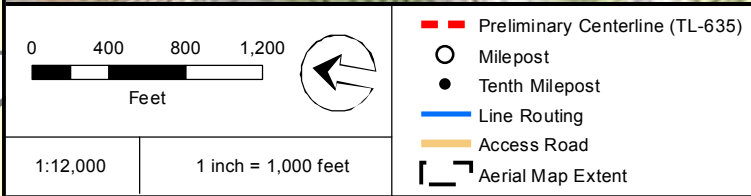
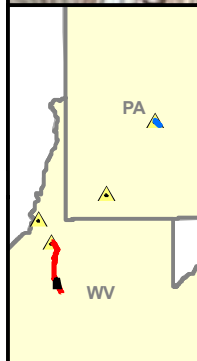


<p>0 200 400 600 Feet</p> <p>1:6,000 1 inch = 500 feet</p>	<ul style="list-style-type: none"> Preliminary Line Corridor Access Road Preliminary Centerline (TL-635) Mileposts Milepost Tenths 	<ul style="list-style-type: none"> Parcels District Boundary Stream/River - Perennial Stream/River - Intermittent NWI Wetland Surveyed Waterbody 	<ul style="list-style-type: none"> Surveyed Wetland Wetland Data Point Upland Data Point Bio Survey Complete* <p>* Preliminary, subject to revision.</p>
---	--	--	--



Supply Header Project
Delineation Report Maps - Huntington District
 Doddridge County, West Virginia
 Page 5 of 29





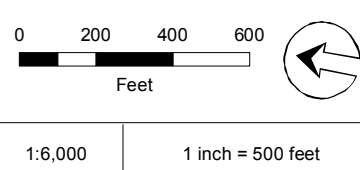
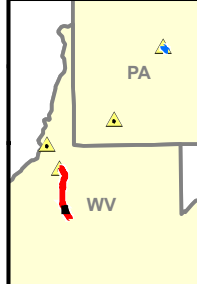
Hydric Classification	
	100% Hydric
	81-99% Hydric
	61-80% Hydric
	41-60% Hydric



Supply Header Project
Delineation Report Maps - Huntington District
 Doddridge County, West Virginia
 Page 6 of 29



This information is for environmental review purposes only.



- | | | |
|---------------------------------|-----------------------------|----------------------|
| Preliminary Line Corridor | Parcels | Surveyed Wetland |
| Access Road | District Boundary | Wetland Data Point |
| Preliminary Centerline (TL-635) | Stream/River - Perennial | Upland Data Point |
| Mileposts | Stream/River - Intermittent | Bio Survey Complete* |
| Milepost Tenths | NW1 Wetland | |
| | Surveyed Waterbody | |

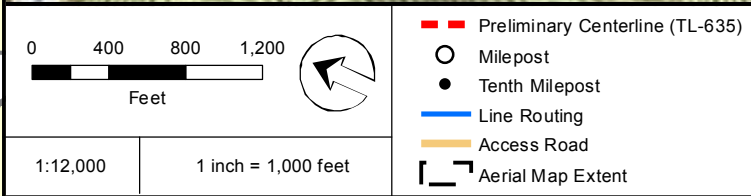
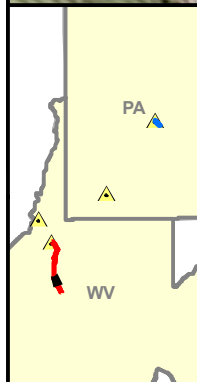
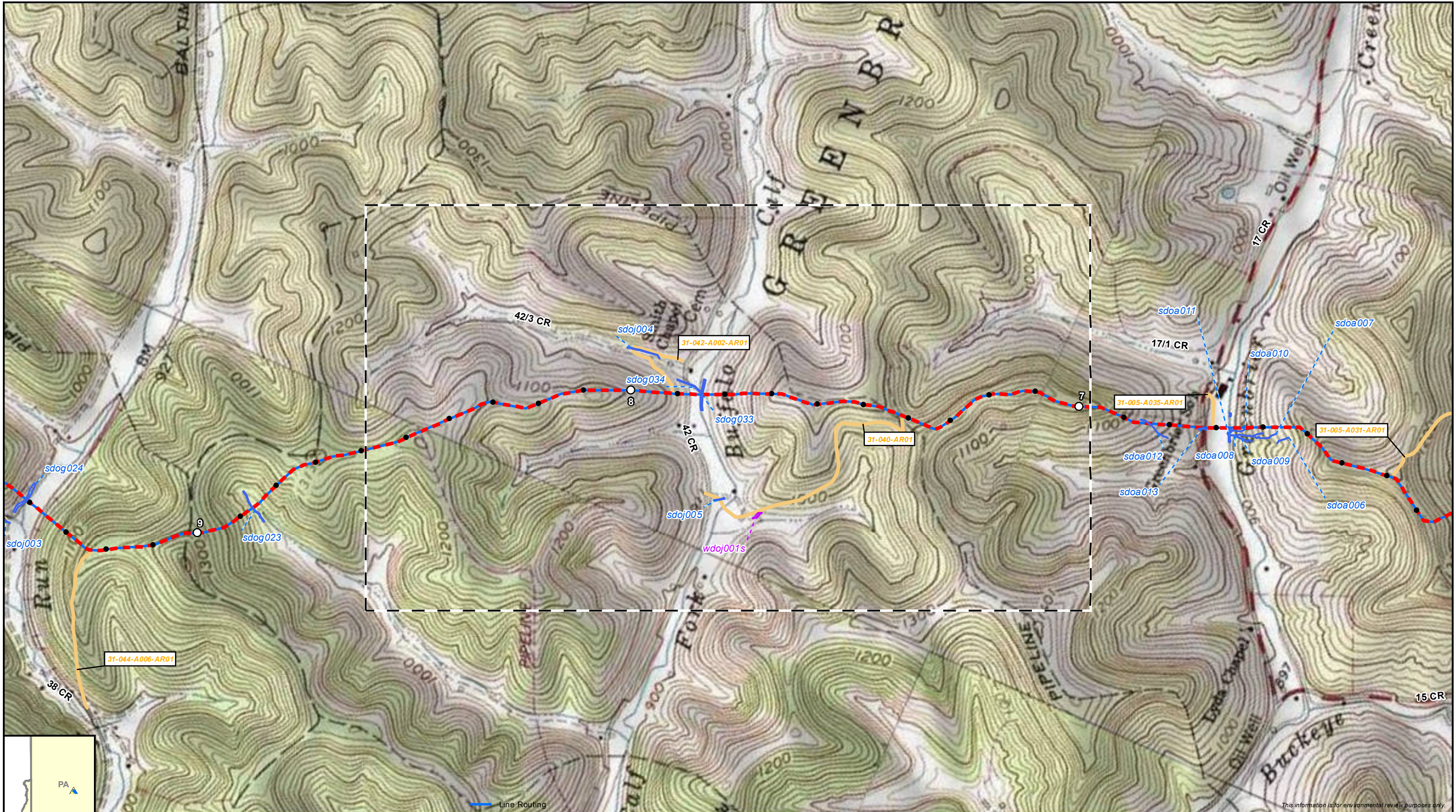
* Preliminary, subject to revision.



Supply Header Project
Delineation Report Maps - Huntington District
 Doddridge County, West Virginia
 Page 6 of 29



DRAWN BY: TAH



Hydric Classification	
	100% Hydric
	81-99% Hydric
	61-80% Hydric
	41-60% Hydric



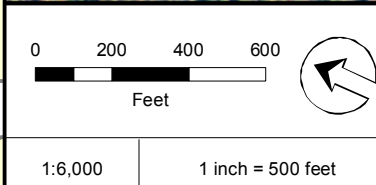
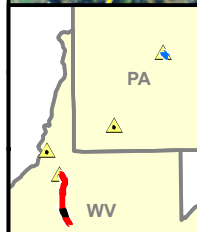
Supply Header Project
Delineation Report Maps - Huntington District
 Doddridge County, West Virginia
 Page 7 of 29

This information is for environmental review purposes only.





This information is for environmental review purposes only.

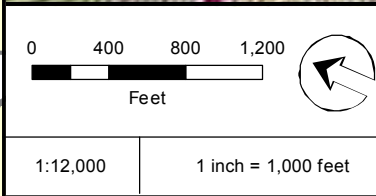
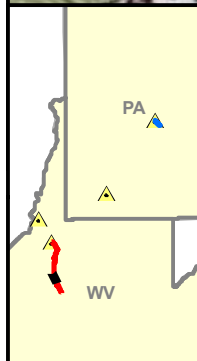
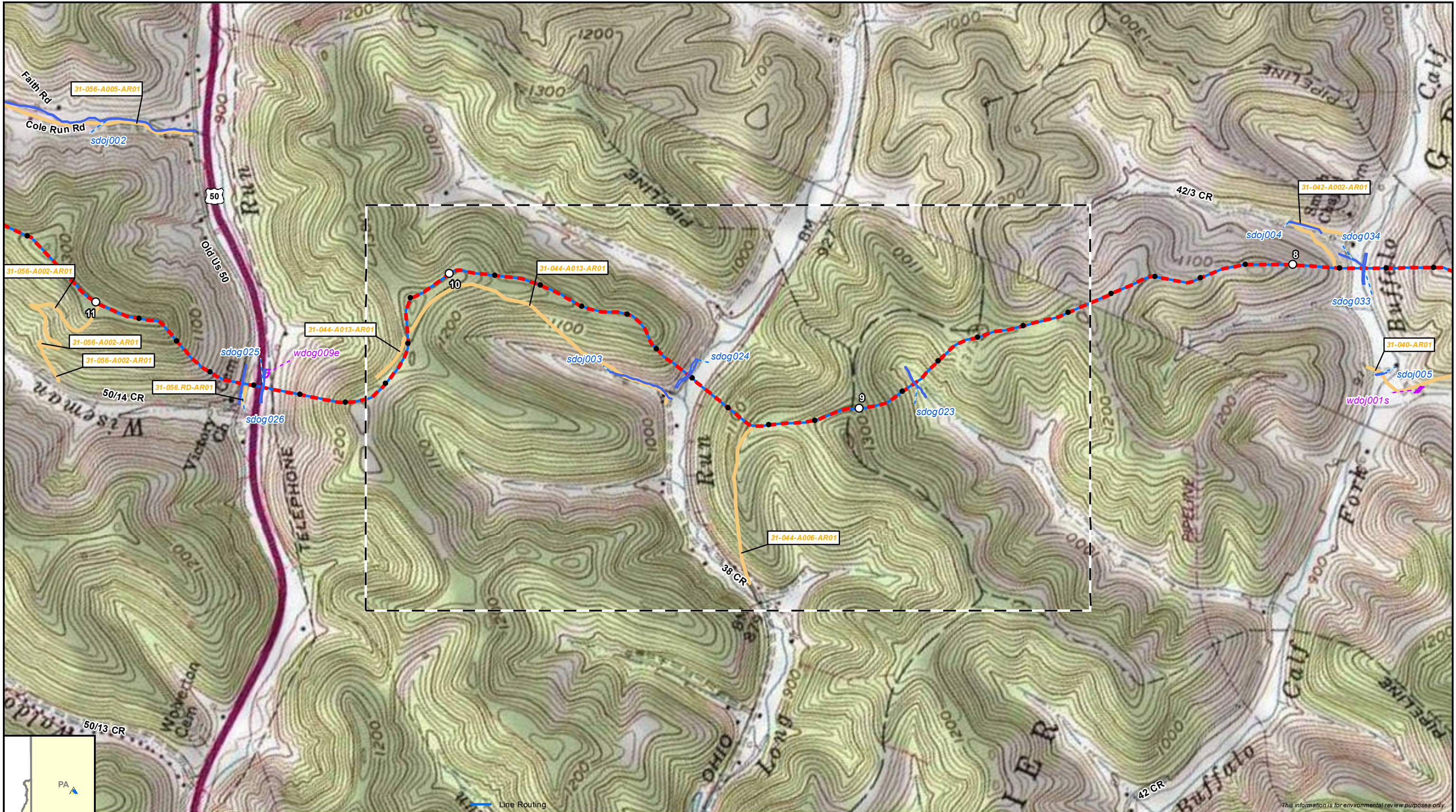


- Preliminary Line Corridor
 - Access Road
 - Preliminary Centerline (TL-635)
 - Mileposts
 - Milepost Tenths
 - Parcels
 - District Boundary
 - Stream/River - Perennial
 - Stream/River - Intermittent
 - Surveyed Waterbody
 - Surveyed Wetland
 - Wetland Data Point
 - Upland Data Point
 - Bio Survey Complete*
- * Preliminary, subject to revision.



Supply Header Project
Delineation Report Maps - Huntington District
 Doddridge County, West Virginia
 Page 7 of 29

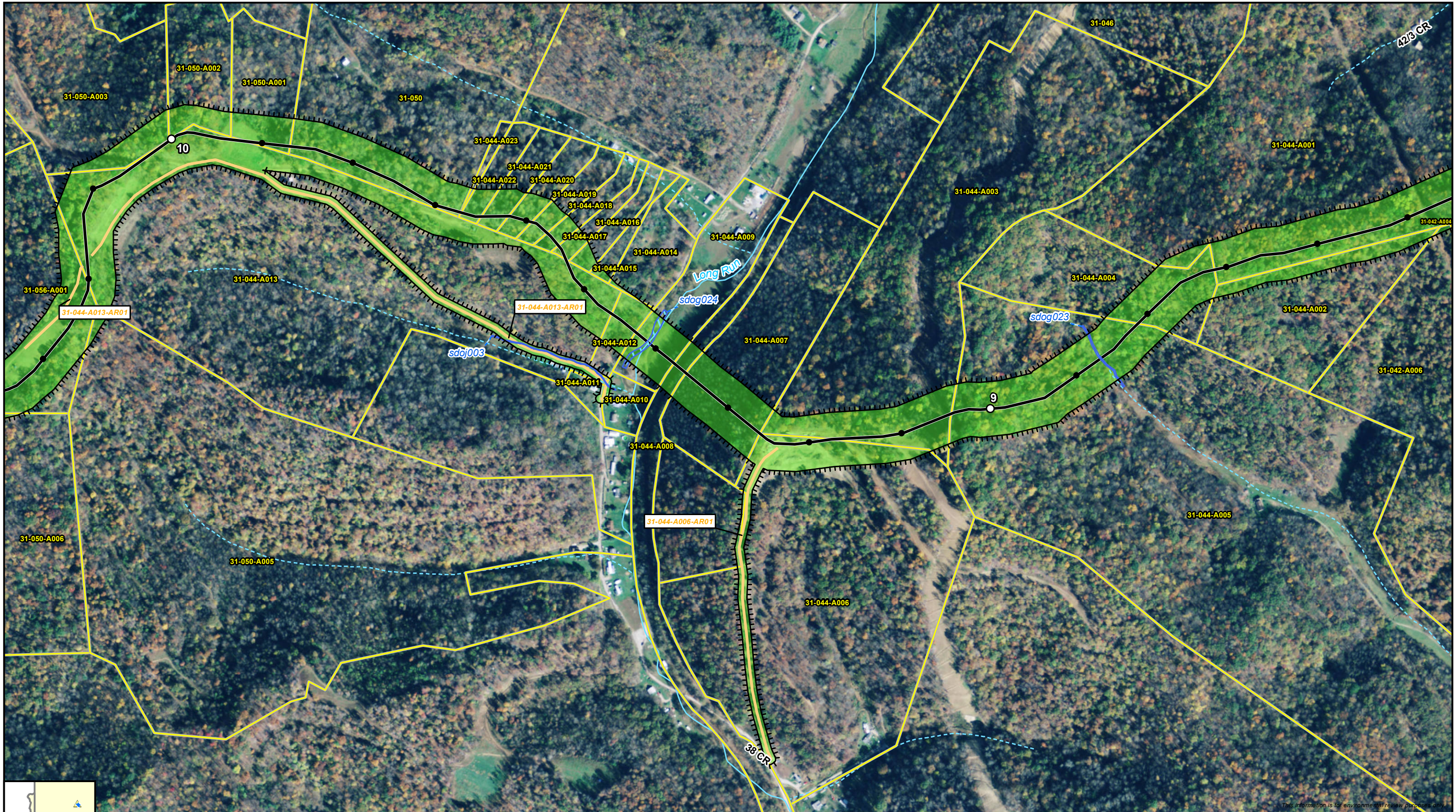




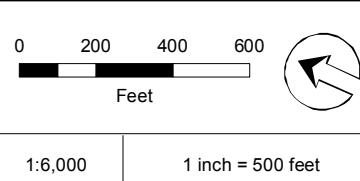
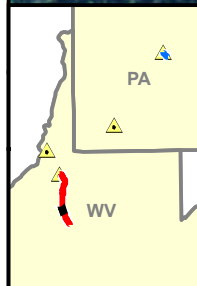
<ul style="list-style-type: none"> — Preliminary Centerline (TL-635) ○ Milepost ● Tenth Milepost — Line Routing — Access Road Aerial Map Extent 	<p>Hydric Classification</p> <ul style="list-style-type: none"> 100% Hydric 81-99% Hydric 61-80% Hydric 41-60% Hydric
--	--

Supply Header Project
Delineation Report Maps - Huntington District
 Doddridge County, West Virginia
 Page 8 of 29

This information is for environmental review purposes only.



This information is for environmental review purposes only.



- | | | |
|---------------------------------|-----------------------------|----------------------|
| Preliminary Line Corridor | Parcels | Wetland Data Point |
| Access Road | District Boundary | Upland Data Point |
| Preliminary Centerline (TL-635) | Stream/River - Perennial | Bio Survey Complete* |
| Mileposts | Stream/River - Intermittent | |
| Milepost Tenths | Surveyed Waterbody | |
| | Surveyed Wetland | |
- * Preliminary, subject to revision.

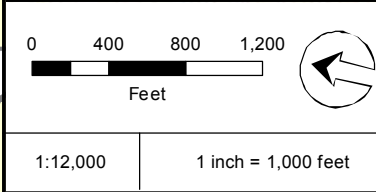
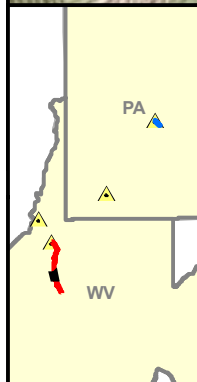


Supply Header Project
Delineation Report Maps - Huntington District
 Doddridge County, West Virginia
 Page 8 of 29





This information is for environmental review purposes only.



- Preliminary Centerline (TL-635)
- Milepost
- Tenth Milepost
- Line Routing
- Access Road
- Aerial Map Extent

- Hydric Classification**
- 100% Hydric
 - 81-99% Hydric
 - 61-80% Hydric
 - 41-60% Hydric

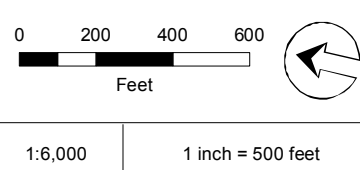
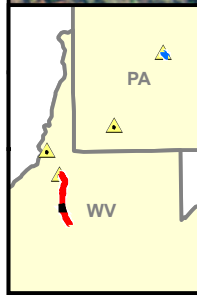


Supply Header Project
Delineation Report Maps - Huntington District
 Doddridge County, West Virginia
 Page 9 of 29





This information is for environmental review purposes only.



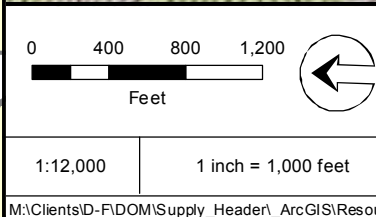
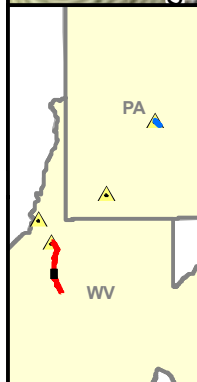
- | | | |
|---------------------------------|-----------------------------|----------------------|
| Preliminary Line Corridor | Parcels | Wetland Data Point |
| Access Road | District Boundary | Upland Data Point |
| Preliminary Centerline (TL-635) | Stream/River - Perennial | Bio Survey Complete* |
| Mileposts | Stream/River - Intermittent | |
| Milepost Tenths | Surveyed Waterbody | |
| | Surveyed Wetland | |
- * Preliminary, subject to revision.



Supply Header Project
Delineation Report Maps - Huntington District
 Doddridge County, West Virginia
 Page 9 of 29



DRAWN BY: TAH



- Preliminary Centerline (TL-635)
- Milepost
- Tenth Milepost
- Line Routing
- Access Road
- Aerial Map Extent

- Hydric Classification**
- 100% Hydric
 - 81-99% Hydric
 - 61-80% Hydric
 - 41-60% Hydric

This information is for environmental review purposes only.

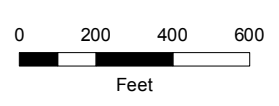
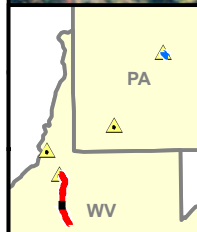


Supply Header Project
Delineation Report Maps - Huntington District
 Doddridge County, West Virginia
 Page 10 of 29





This information is for environmental review purposes only.



1:6,000 1 inch = 500 feet

- | | | |
|---------------------------------|-----------------------------|----------------------|
| Preliminary Line Corridor | Parcels | Wetland Data Point |
| Access Road | District Boundary | Upland Data Point |
| Preliminary Centerline (TL-635) | Stream/River - Perennial | Bio Survey Complete* |
| Mileposts | Stream/River - Intermittent | |
| Milepost Tenths | Surveyed Waterbody | |
| | Surveyed Wetland | |

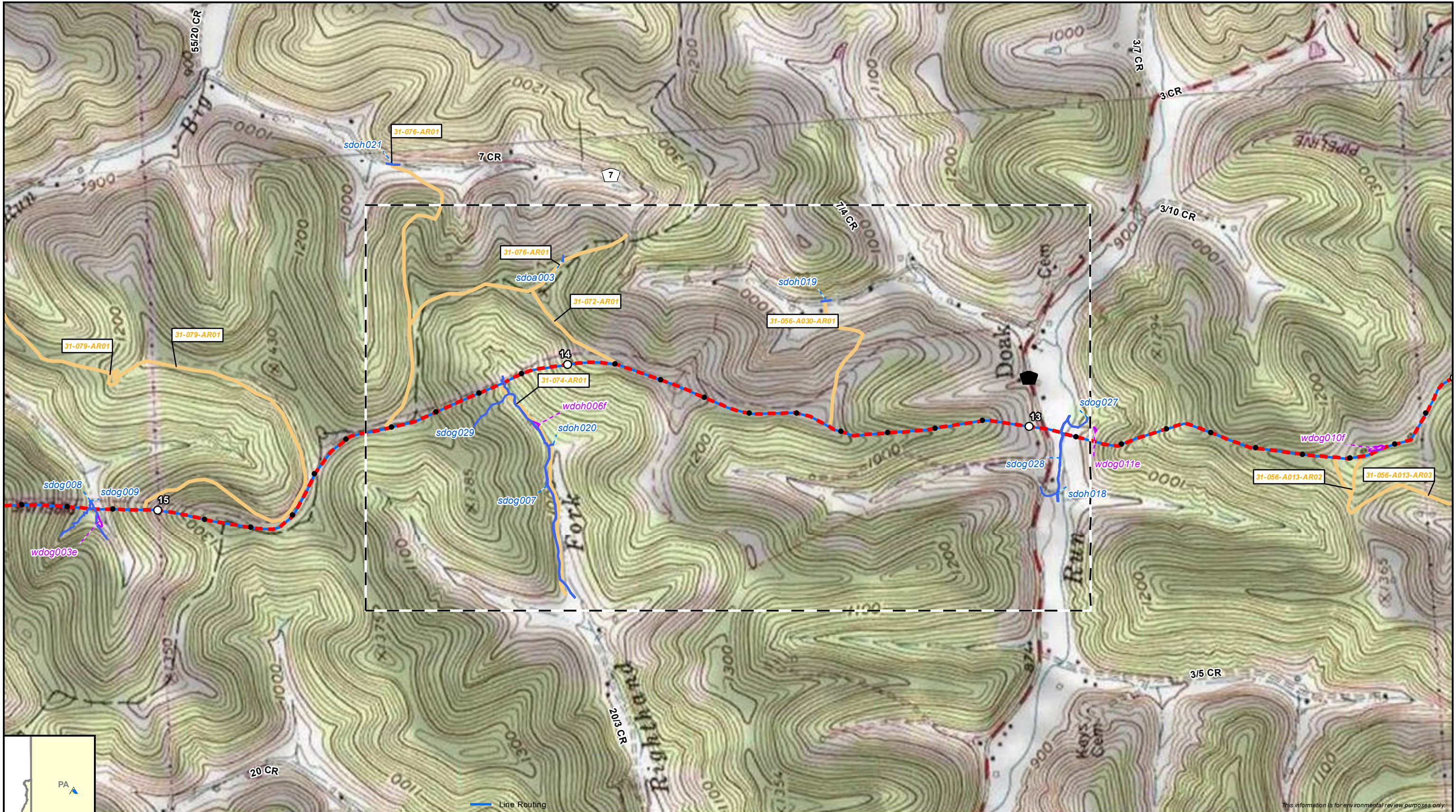
* Preliminary, subject to revision.



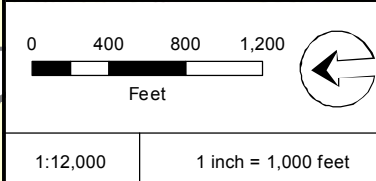
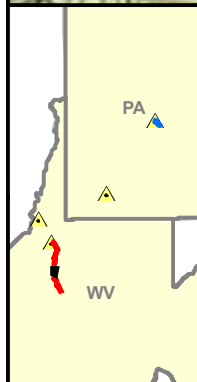
Supply Header Project
Delineation Report Maps - Huntington District
 Doddridge County, West Virginia
 Page 10 of 29



DRAWN BY: TAH



This information is for environmental review purposes only.



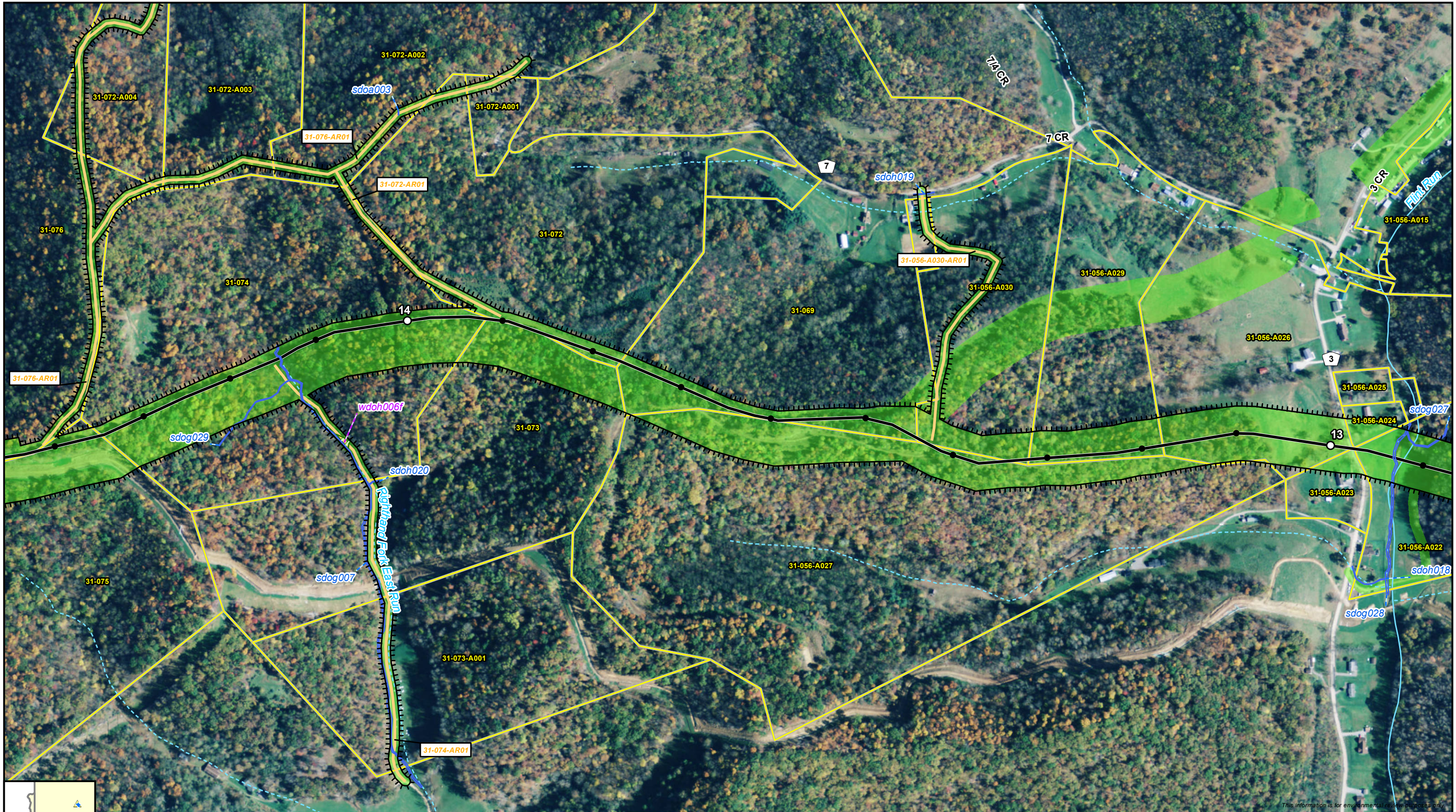
- Preliminary Centerline (TL-635)
- Milepost
- Tenth Milepost
- Line Routing
- Access Road
- Aerial Map Extent

- Hydric Classification**
- 100% Hydric
 - 81-99% Hydric
 - 61-80% Hydric
 - 41-60% Hydric

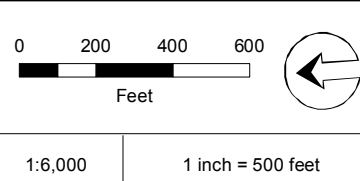
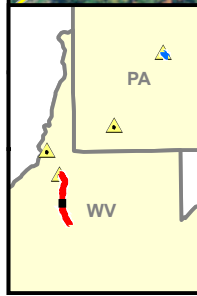


Supply Header Project
Delineation Report Maps - Huntington District
 Doddridge County, West Virginia
 Page 11 of 29





This information is for environmental review purposes only.



- Preliminary Line Corridor
- Access Road
- Preliminary Centerline (TL-635)
- Mileposts
- Milepost Tenths
- Parcels
- District Boundary
- Stream/River - Perennial
- Stream/River - Intermittent
- Surveyed Waterbody
- Surveyed Wetland
- Wetland Data Point
- Upland Data Point
- Bio Survey Complete*

* Preliminary, subject to revision.



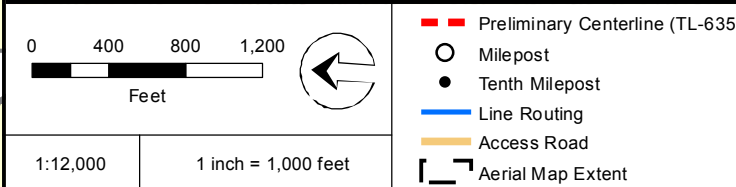
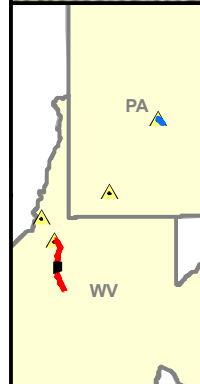
Supply Header Project
Delineation Report Maps - Huntington District
 Doddridge County, West Virginia
 Page 11 of 29



DRAWN BY: TAH



This information is for environmental review purposes only.



Line Routing

Hydric Classification	
[Blue line]	100% Hydric
[Light blue line]	81-99% Hydric
[Red line]	61-80% Hydric
[Green line]	41-60% Hydric

[Red dashed line] Preliminary Centerline (TL-635)
 [Circle] Milepost
 [Dot] Tenth Milepost
 [Blue line] Line Routing
 [Orange line] Access Road
 [Dashed box] Aerial Map Extent



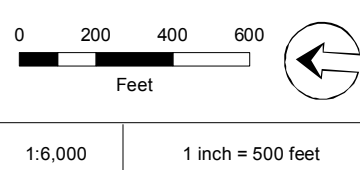
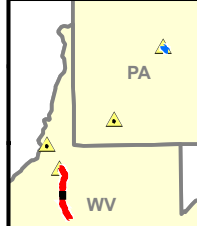
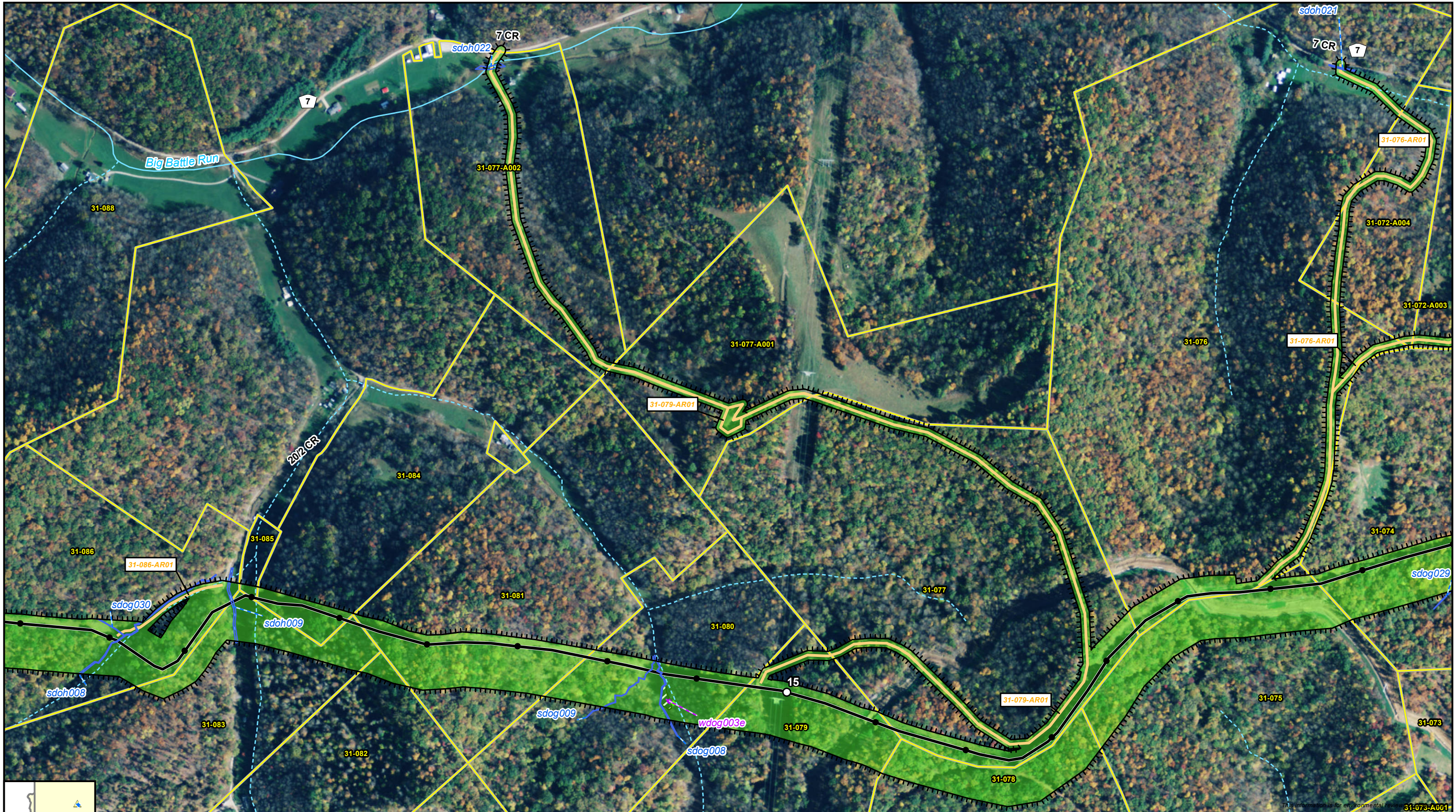
Supply Header Project

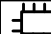


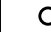









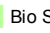
Delineation Report Maps - Huntington District

Doddridge County, West Virginia
Page 12 of 29



DRAWN BY: TAH



-  Preliminary Line Corridor
-  Access Road
-  Preliminary Centerline (TL-635)
-  Mileposts
-  Milepost Tenths
-  Parcels
-  District Boundary
-  Stream/River - Perennial
-  Stream/River - Intermittent
-  Surveyed Waterbody
-  Surveyed Wetland
-  Wetland Data Point
-  Upland Data Point
-  Bio Survey Complete*

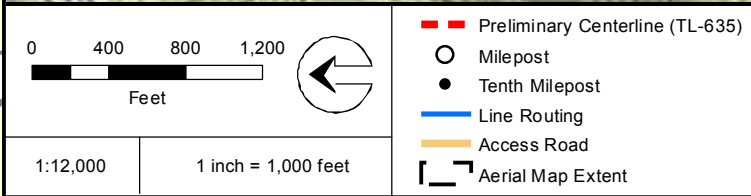
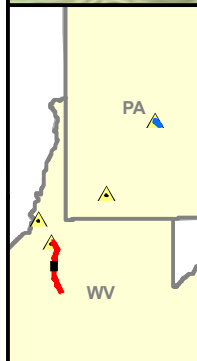
* Preliminary, subject to revision.



Supply Header Project
Delineation Report Maps - Huntington District
 Doddridge County, West Virginia
 Page 12 of 29



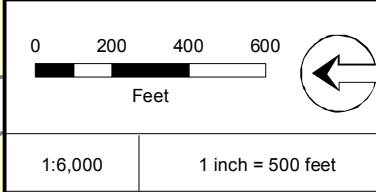
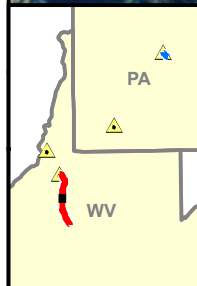
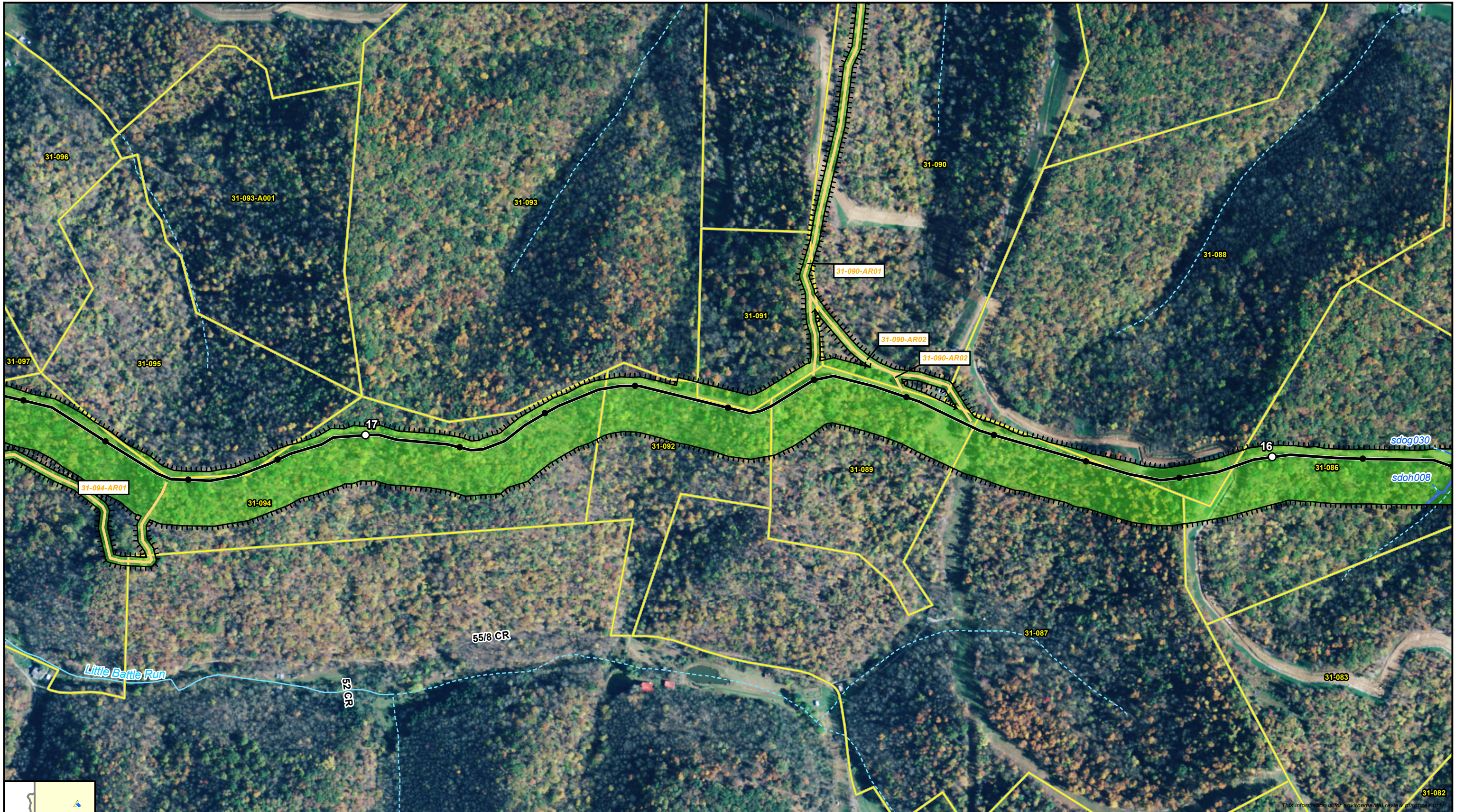
DRAWN BY: TAH



Hydric Classification	
	100% Hydric
	81-99% Hydric
	61-80% Hydric
	41-60% Hydric



Supply Header Project
Delineation Report Maps - Huntington District
 Doddridge County, West Virginia
 Page 13 of 29

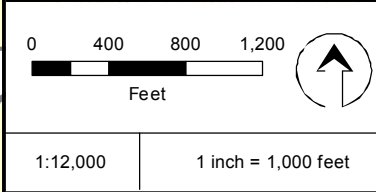
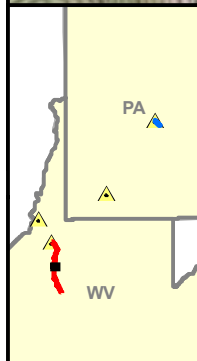
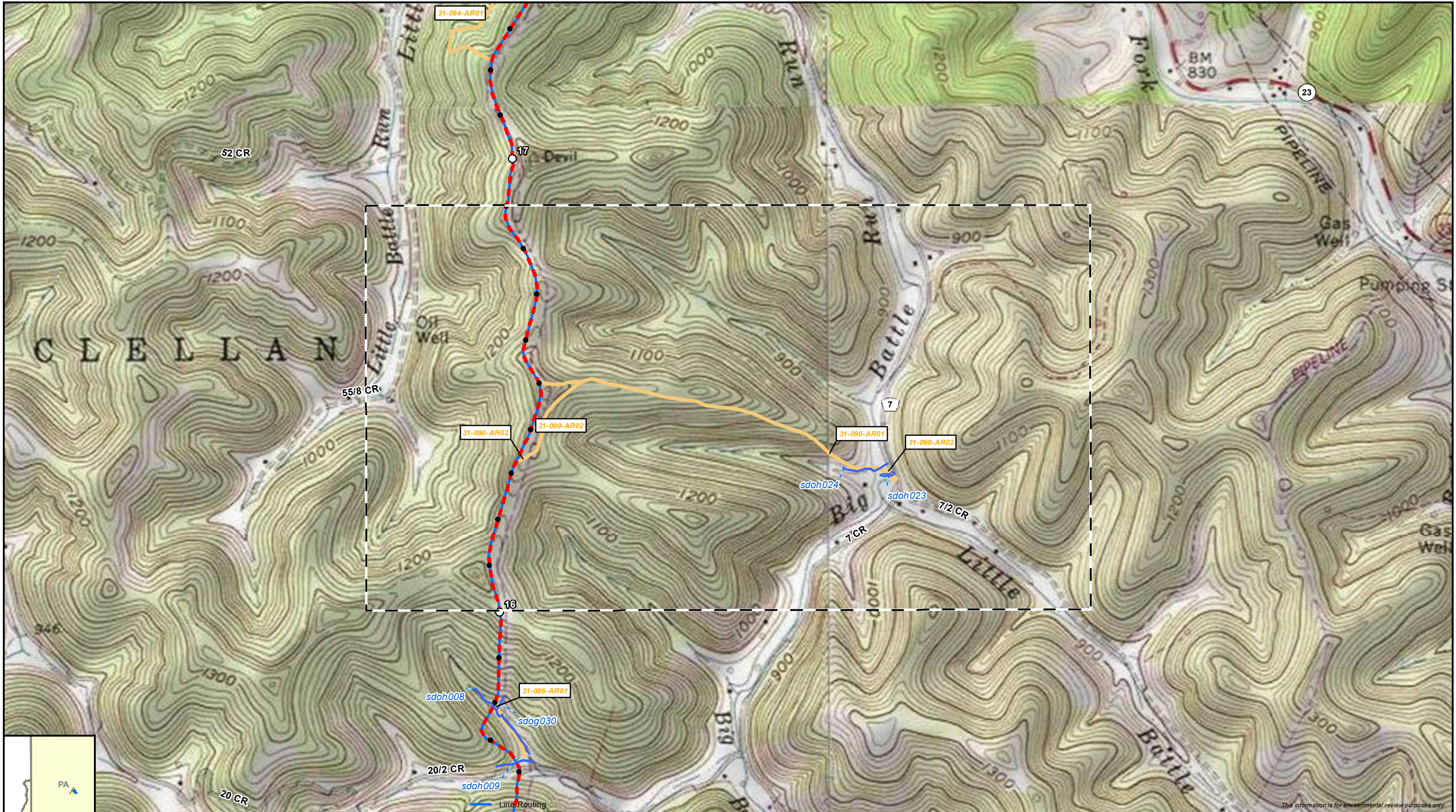


- | | | |
|---------------------------------|-----------------------------|----------------------|
| Preliminary Line Corridor | Parcels | Wetland Data Point |
| Access Road | District Boundary | Upland Data Point |
| Preliminary Centerline (TL-635) | Stream/River - Perennial | Bio Survey Complete* |
| Mileposts | Stream/River - Intermittent | |
| Milepost Tenths | Surveyed Waterbody | |
| | Surveyed Wetland | |
- * Preliminary, subject to revision.



Supply Header Project
Delineation Report Maps - Huntington District
 Doddridge County, West Virginia
 Page 13 of 29



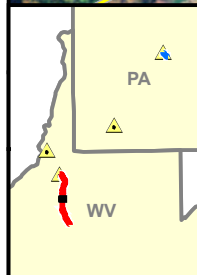


- Preliminary Centerline (TL-635)
 - Milepost
 - Tenth Milepost
 - Line Routing
 - Access Road
 - Aerial Map Extent
- Hydric Classification**
- 100% Hydric
 - 81-99% Hydric
 - 61-80% Hydric
 - 41-60% Hydric



Supply Header Project
Delineation Report Maps - Huntington District
 Doddridge County, West Virginia
 Page 14 of 29





0 200 400 600
Feet

1:6,000 1 inch = 500 feet

- Preliminary Line Corridor
- Access Road
- Preliminary Centerline (TL-635)
- Mileposts
- Milepost Tenths

- Parcels
- District Boundary
- Stream/River - Perennial
- Stream/River - Intermittent
- Surveyed Waterbody
- Surveyed Wetland
- Wetland Data Point
- Upland Data Point
- Bio Survey Complete*

* Preliminary, subject to revision.



Supply Header Project
Delineation Report Maps - Huntington District
 Doddridge County, West Virginia
 Page 14 of 29



DRAWN BY: TAH