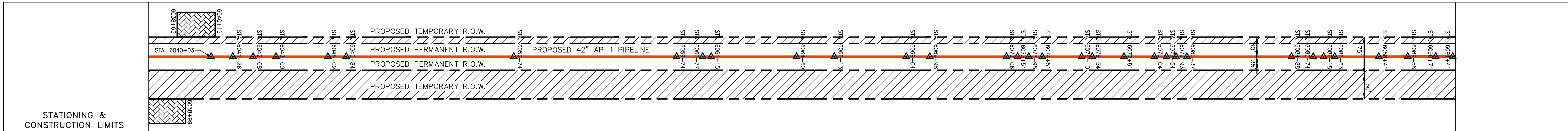
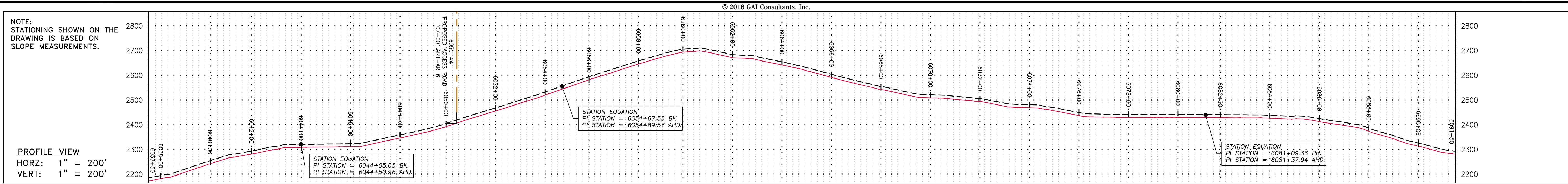
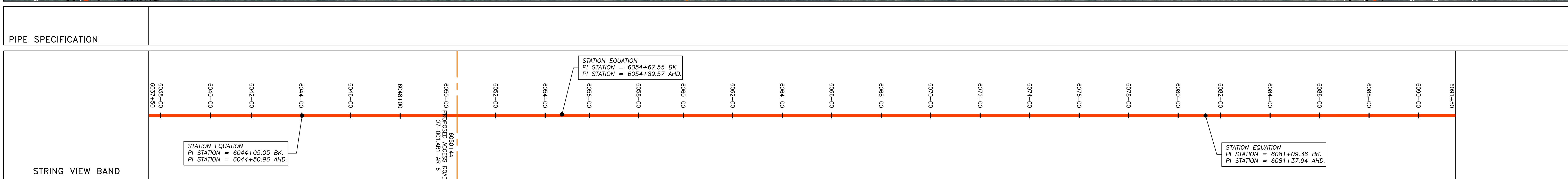
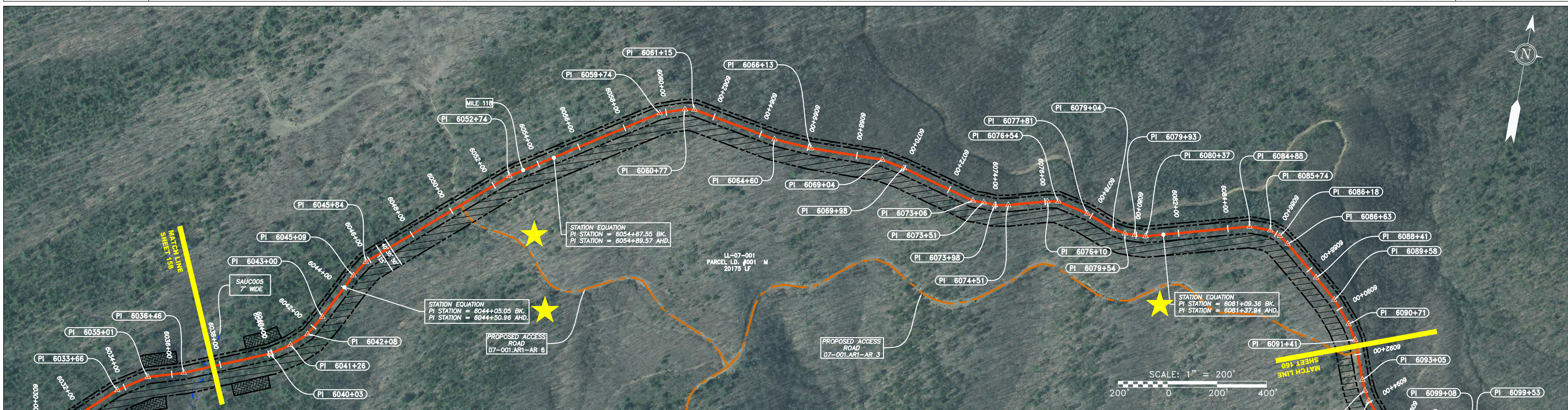


GAI CAD FILE NO. R:\050-5159 - SERP - THRASHER - GAI - INC. - GAI - THRASHER SURVEY DRAWING SEC 3\RR SHEETS 159-163 (16-20).DWG



PROPERTY OWNERSHIP

LL-07-001
 PARCEL I.D. #001 M
 20175 LF



LEGEND

	PROPERTY LINE		STORM SEWER
	FENCE		WATER LINE
	STREAM		SANITARY SEWER
	EXISTING GAS PIPELINE		EDGE OF GRAVEL
	OVERHEAD UTILITY LINES		PROPOSED PERMANENT EASEMENT
	PROPOSED GAS PIPELINE		UTILITY POLE
	PROPOSED GAS PIPELINE (NO GROUND SURVEY)		

	PROPOSED TEMPORARY R.O.W.
	EXTRA WORK SPACE
	WETLAND <small>(COLOR SHOWN TO PROVIDE CLARITY ONLY)</small>
	TOPSOIL SEGREGATION AREA
	AREA OF NO DISTURBANCE

- NOTES:**
- COORDINATE SYSTEM USED FOR MAPPING AND TOPOGRAPHY - UTM WITH NAD83 DATUM, ZONE 17, US SURVEY FOOT, CENTRAL MERIDIAN 81° W
 - CONTOURS AND TOPOGRAPHIC FEATURES WERE DERIVED BY AN ON THE GROUND SURVEY PERFORMED BY THE THRASHER GROUP, INC. ON 06-25-2014 THRU 08-26-2014 GPS SUB-METER ACCURACY.
 - AERIAL IMAGERY IS TAKEN FROM A SPRING 2015 FLIGHT BY KUCERA INTERNATIONAL INC.
 - THE PROPERTY LINES SHOWN ARE BASED ON GIS & TAX ASSESSMENT RECORDS (PROVIDED BY OTHERS), GAI & THE THRASHER GROUP MAKE NO GUARANTEE EITHER EXPRESSED OR IMPLIED AS TO THE ACCURACY OF THE RECORDS AS SHOWN ON THESE DRAWINGS.
 - WETLAND DATA SHOWN ON THESE DRAWINGS WAS PROVIDED BY NRG.
 - THESE DRAWINGS ARE NOT INTENDED TO PROVIDE EROSION AND SEDIMENTATION CONTROL REQUIREMENTS. SEE EROSION AND SEDIMENTATION CONTROL PLANS FOR COMPLETE REQUIREMENTS AND BMP LOCATIONS.
 - ALL STATIONING SHOWN IS SLOPE STATIONING.

NO.	DATE	BY	CHKD.	APPD.	DESCRIPTION

7/14/16

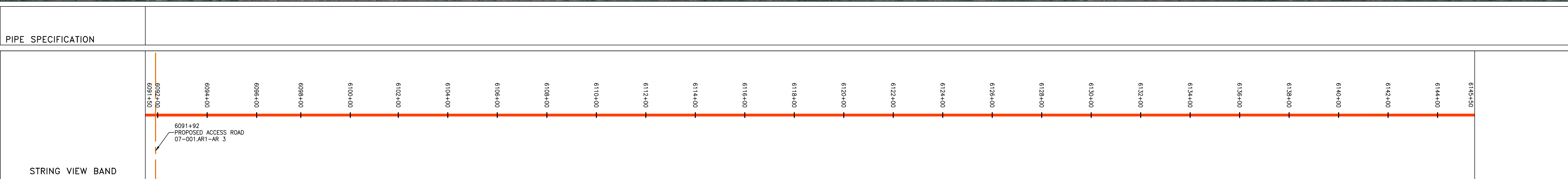
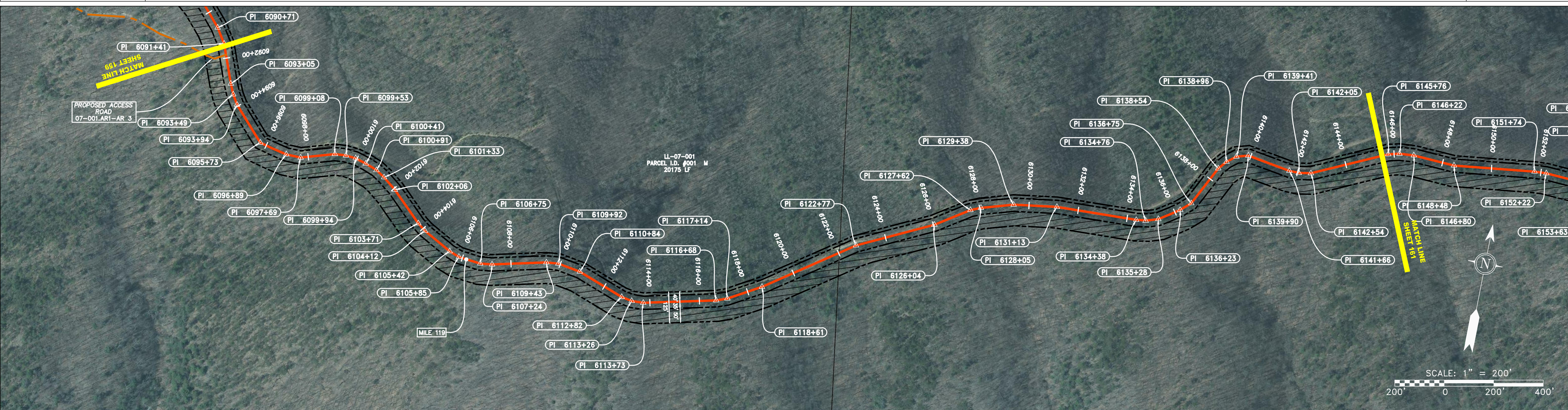
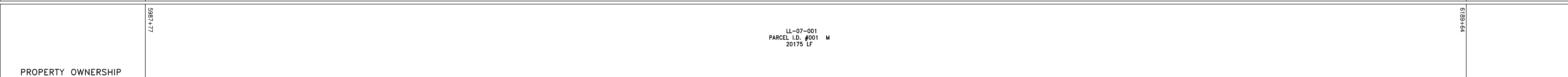
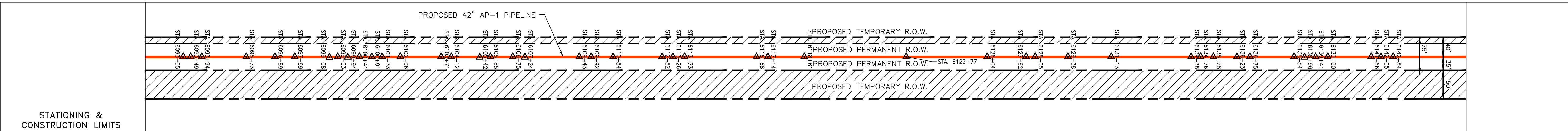
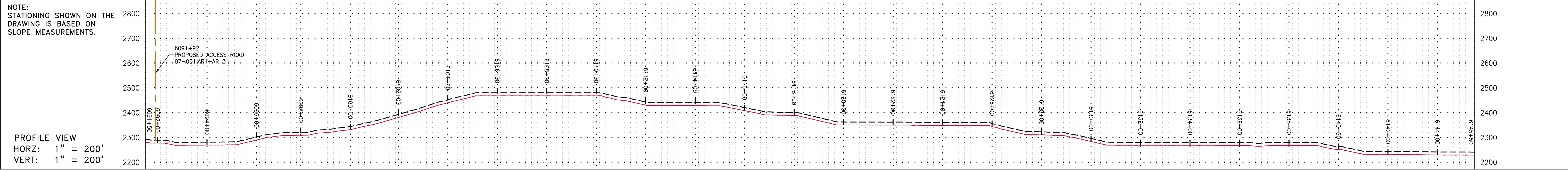
CONSTRUCTION ALIGNMENT STA: 6037+50 TO 6091+50

ATLANTIC COAST PIPELINE, LLC
 C/O DOMINION TRANSMISSION, INC.
 445 WEST MAIN STREET
 CLARKSBURG, WEST VIRGINIA, 26301

SCALE: AS SHOWN
 DATE: 07/22/16
 DRAWN: GPT
 CHECKED: DLH
 APPROVED: NET



PROJECT NO./DASH NO.	140468	
TASK NO.	005	00
GROUP ID	D	E159
159	OF	344



LEGEND

	PROPERTY LINE		STORM SEWER
	FENCE		WATER LINE
	STREAM		SANITARY SEWER
	EXISTING GAS PIPELINE		EDGE OF GRAVEL
	OVERHEAD UTILITY LINES		PROPOSED PERMANENT EASEMENT
	PROPOSED GAS PIPELINE		UTILITY POLE
	PROPOSED GAS PIPELINE (NO GROUND SURVEY)		

NOTES:

	PROPOSED TEMPORARY R.O.W.
	EXTRA WORK SPACE
	WETLAND (COLOR SHOWN TO PROVIDE CLARITY ONLY)
	TOPSOIL SEGREGATION AREA
	AREA OF NO DISTURBANCE

- COORDINATE SYSTEM USED FOR MAPPING AND TOPOGRAPHY - UTM WITH NAD83 DATUM, ZONE 17, US SURVEY FOOT, CENTRAL MERIDIAN 81° W
- CONTOURS AND TOPOGRAPHIC FEATURES WERE DERIVED BY AN ON THE GROUND SURVEY PERFORMED BY THE THRASHER GROUP, INC. ON 06-25-2014 THRU 08-26-2014 GPS SUB-METER ACCURACY.
- AERIAL IMAGERY IS TAKEN FROM A SPRING 2015 FLIGHT BY KUCERA INTERNATIONAL INC.
- THE PROPERTY LINES SHOWN ARE BASED ON GIS & TAX ASSESSMENT RECORDS (PROVIDED BY OTHERS), GAI & THE THRASHER GROUP MAKE NO GUARANTEE EITHER EXPRESSED OR IMPLIED AS TO THE ACCURACY OF THE RECORDS AS SHOWN ON THESE DRAWINGS.
- WETLAND DATA SHOWN ON THESE DRAWINGS WAS PROVIDED BY NRG.
- THESE DRAWINGS ARE NOT INTENDED TO PROVIDE EROSION AND SEDIMENTATION CONTROL REQUIREMENTS. SEE EROSION AND SEDIMENTATION CONTROL PLANS FOR COMPLETE REQUIREMENTS AND BMP LOCATIONS.
- ALL STATIONING SHOWN IS SLOPE STATIONING.

NO.	DATE	BY	CHKD.	APPD.	DESCRIPTION

7/12/16

42" AP-1 PIPELINE
 CONSTRUCTION ALIGNMENT STA: 6091+50 TO 6145+50
 AUGUSTA COUNTY, VIRGINIA
ATLANTIC COAST PIPELINE, LLC
 C/O DOMINION TRANSMISSION, INC.
 445 WEST MAIN STREET
 CLARKSBURG, WEST VIRGINIA 26301

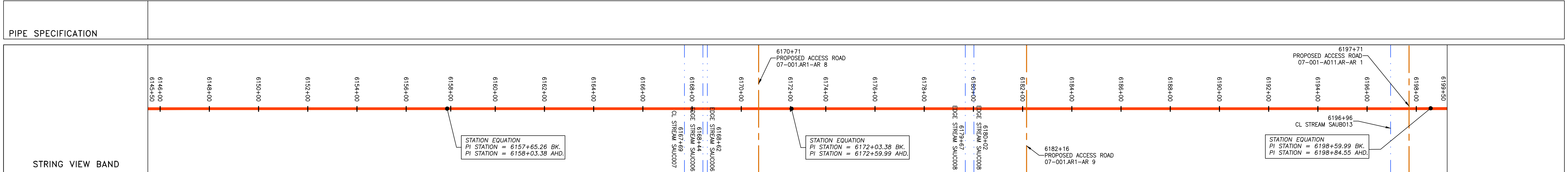
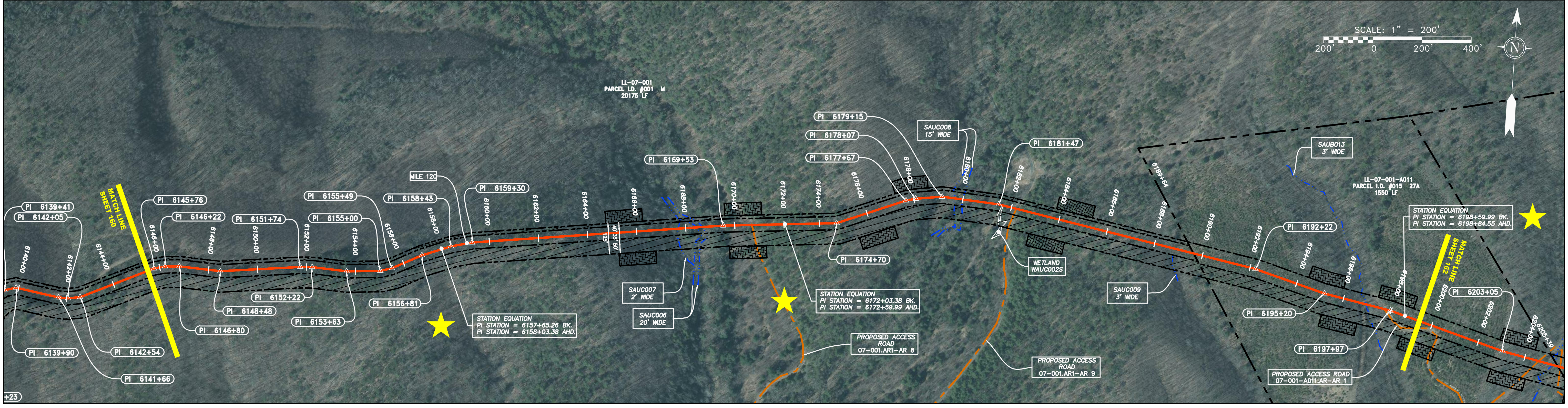
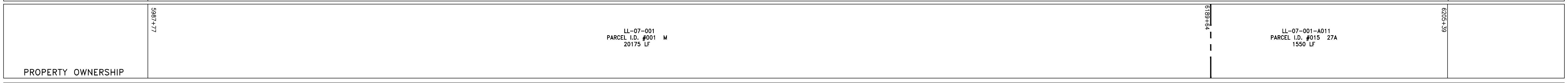
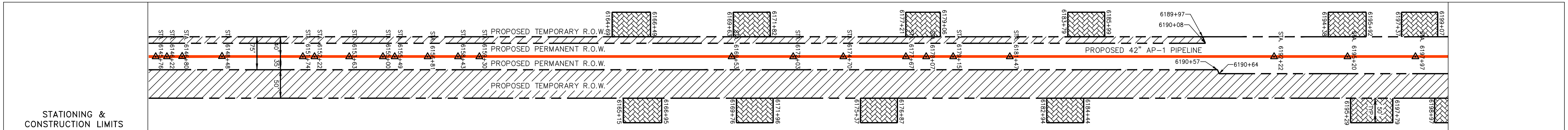
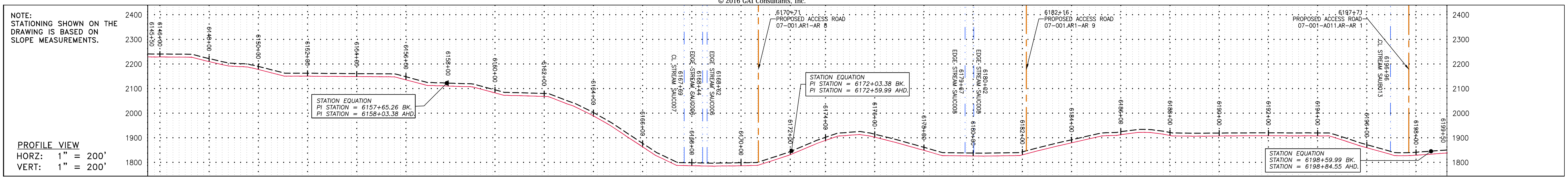
SCALE: AS SHOWN
 DATE: 07/22/16
 DRAWN: GPT
 CHECKED: DLH
 APPROVED: NET



SOUTHPONTE OFFICE
 6000 TOWN CENTER BLVD.
 CANONSBURG, PA 15317
 724-873-3545

PROJECT NO./DASH NO.	140468	
TASK NO.	005	00
GROUP ID	D	E160
160 OF 344		

GAI CAD FILE NO. R:\050-5159 - GAI - THRASHER - SERP - MAPPING SURVEY DRAWING SEC 3\RR SHEETS 159-163 (16-20).DWG



LEGEND

	PROPERTY LINE		STORM SEWER
	FENCE		WATER LINE
	STREAM		SANITARY SEWER
	EXISTING GAS PIPELINE		EDGE OF GRAVEL
	OVERHEAD UTILITY LINES		PROPOSED PERMANENT EASEMENT
	PROPOSED GAS PIPELINE		UTILITY POLE
	PROPOSED GAS PIPELINE (NO GROUND SURVEY)		

NOTES:

	PROPOSED TEMPORARY R.O.W.
	EXTRA WORK SPACE
	WETLAND (COLOR SHOWN TO PROVIDE CLARITY ONLY)
	TOPSOIL SEGREGATION AREA
	AREA OF NO DISTURBANCE

- COORDINATE SYSTEM USED FOR MAPPING AND TOPOGRAPHY - UTM WITH NAD83 DATUM, ZONE 17, US SURVEY FOOT, CENTRAL MERIDIAN 81° W
- CONTOURS AND TOPOGRAPHIC FEATURES WERE DERIVED BY AN ON THE GROUND SURVEY PERFORMED BY THE THRASHER GROUP, INC. ON 06-25-2014 THRU 08-26-2014 GPS SUB-METER ACCURACY.
- AERIAL IMAGERY IS TAKEN FROM A SPRING 2015 FLIGHT BY KUCERA INTERNATIONAL INC.
- THE PROPERTY LINES SHOWN ARE BASED ON GIS & TAX ASSESSMENT RECORDS (PROVIDED BY OTHERS), GAI & THE THRASHER GROUP MAKE NO GUARANTEE EITHER EXPRESSED OR IMPLIED AS TO THE ACCURACY OF THE RECORDS AS SHOWN ON THESE DRAWINGS.
- WETLAND DATA SHOWN ON THE DRAWINGS WAS PROVIDED BY NRG.
- THESE DRAWINGS ARE NOT INTENDED TO PROVIDE EROSION AND SEDIMENTATION CONTROL REQUIREMENTS. SEE EROSION AND SEDIMENTATION CONTROL PLANS FOR COMPLETE REQUIREMENTS AND BMP LOCATIONS.
- ALL STATIONING SHOWN IS SLOPE STATIONING.

NO.	DATE	BY	CHKD.	APPD.	DESCRIPTION

7/14/16

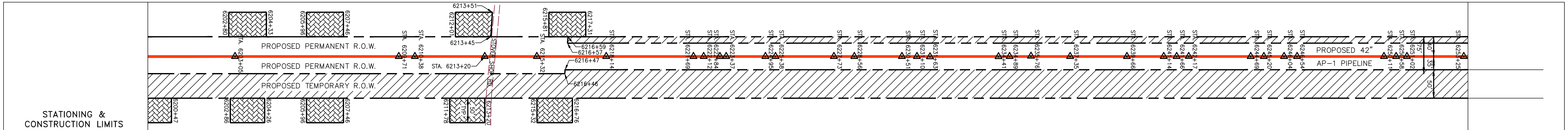
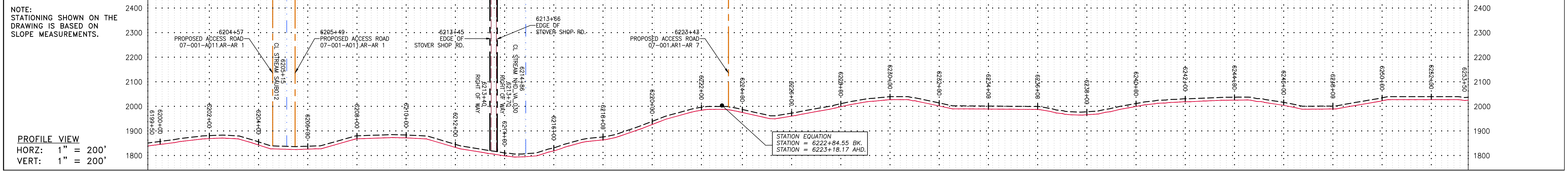
42" AP-1 PIPELINE
 CONSTRUCTION ALIGNMENT STA: 6145+50 TO 6199+50
 AUGUSTA COUNTY, VIRGINIA

ATLANTIC COAST PIPELINE, LLC
 C/O DOMINION TRANSMISSION, INC.
 445 WEST MAIN STREET
 CLARKSBURG, WEST VIRGINIA, 26301

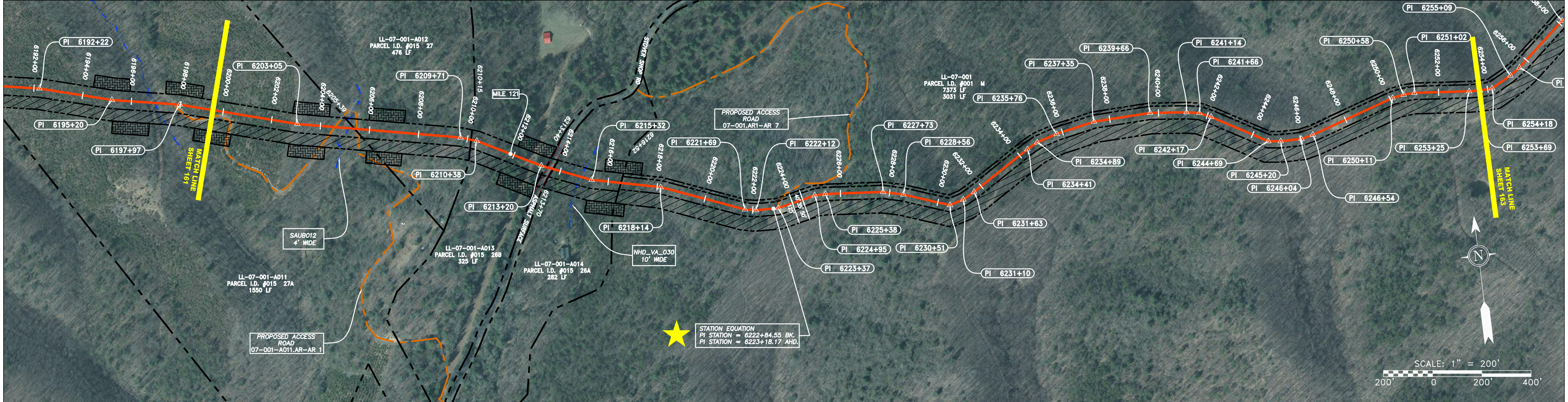
SCALE: AS SHOWN
 DATE: 07/22/16
 DRAWN: GPT
 CHECKED: DLH
 APPROVED: NET



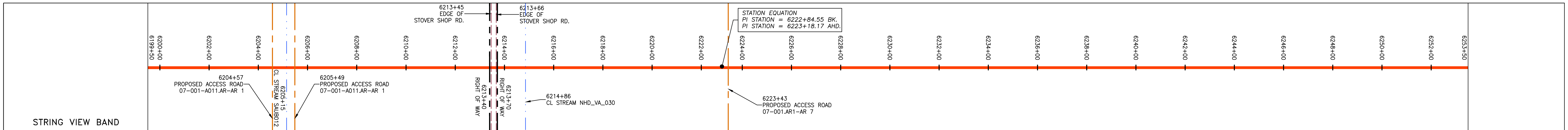
PROJECT NO./DASH NO.	140468
TASK NO. SUB TASK NO.	005 00
GROUP ID DRAWING NO.	D E161
161 OF 344	



PROPERTY OWNERSHIP
LL-07-001-A011 PARCEL I.D. #015 27A 1550 LF
LL-07-001-A012 PARCEL I.D. #015 27 476 LF
LL-07-001-A013 PARCEL I.D. #015 268 325 LF
LL-07-001-A014 PARCEL I.D. #015 28A 282 LF
LL-07-001 PARCEL I.D. #001 M 7373 LF



PIPE SPECIFICATION
6200+00
6202+00
6204+00
6206+00
6208+00
6210+00
6212+00
6214+00
6216+00
6218+00
6220+00
6222+00
6224+00
6226+00
6228+00
6230+00
6232+00
6234+00
6236+00
6238+00
6240+00
6242+00
6244+00
6246+00
6248+00
6250+00
6252+00
6254+00
6255+00



LEGEND	
	PROPERTY LINE
	FENCE
	STREAM
	EXISTING GAS PIPELINE
	OVERHEAD UTILITY LINES
	PROPOSED GAS PIPELINE
	PROPOSED GAS PIPELINE (NO GROUND SURVEY)
	STORM SEWER
	WATER LINE
	SANITARY SEWER
	EDGE OF GRAVEL
	PROPOSED PERMANENT EASEMENT
	UTILITY POLE

	PROPOSED TEMPORARY R.O.W.
	EXTRA WORK SPACE
	WETLAND <small>(COLOR SHOWN TO PROVIDE CLARITY ONLY)</small>
	TOPSOIL SEGREGATION AREA
	AREA OF NO DISTURBANCE

- NOTES:**
- COORDINATE SYSTEM USED FOR MAPPING AND TOPOGRAPHY - UTM WITH NAD83 DATUM, ZONE 17, US SURVEY FOOT, CENTRAL MERIDIAN 81° W
 - CONTOURS AND TOPOGRAPHIC FEATURES WERE DERIVED BY AN ON THE GROUND SURVEY PERFORMED BY THE THRASHER GROUP, INC. ON 06-25-2014 THRU 08-26-2014 GPS SUB-METER ACCURACY.
 - AERIAL IMAGERY IS TAKEN FROM A SPRING 2015 FLIGHT BY KUCERA INTERNATIONAL INC.
 - THE PROPERTY LINES SHOWN ARE BASED ON GIS & TAX ASSESSMENT RECORDS (PROVIDED BY OTHERS), GAI & THE THRASHER GROUP MAKE NO GUARANTEE EITHER EXPRESSED OR IMPLIED AS TO THE ACCURACY OF THE RECORDS AS SHOWN ON THESE DRAWINGS.
 - WETLAND DATA SHOWN ON THE DRAWINGS WAS PROVIDED BY NRG.
 - THESE DRAWINGS ARE NOT INTENDED TO PROVIDE EROSION AND SEDIMENTATION CONTROL REQUIREMENTS. SEE EROSION AND SEDIMENTATION CONTROL PLANS FOR COMPLETE REQUIREMENTS AND BMP LOCATIONS.
 - ALL STATIONING SHOWN IS SLOPE STATIONING.

NO.	DATE	BY	CHKD.	APPVD.	DESCRIPTION

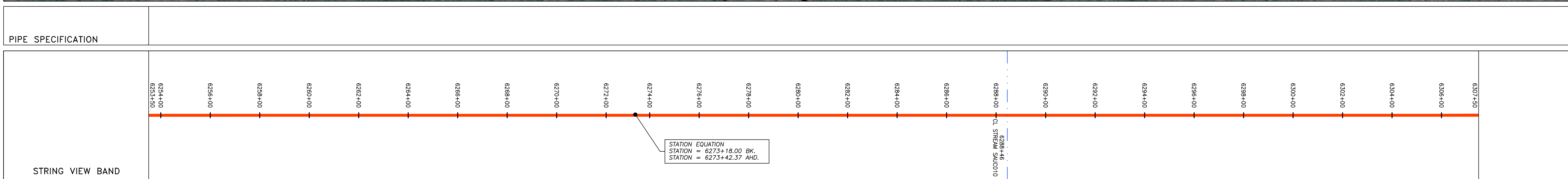
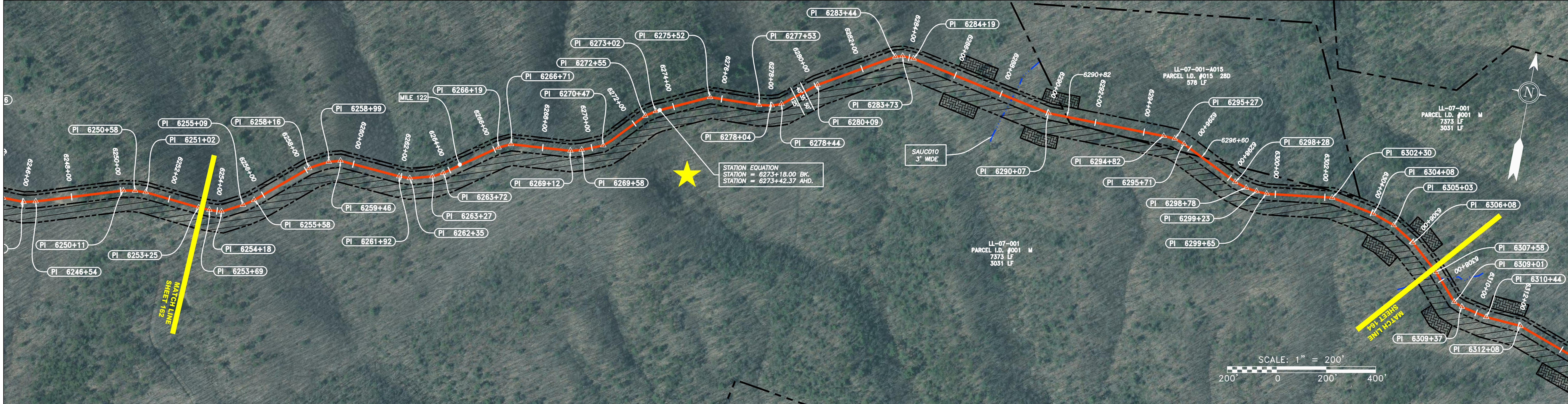
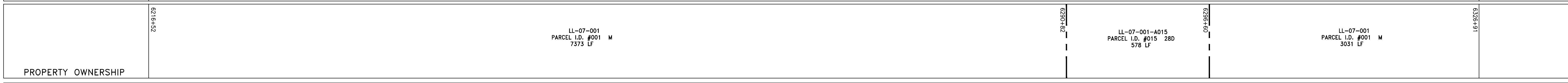
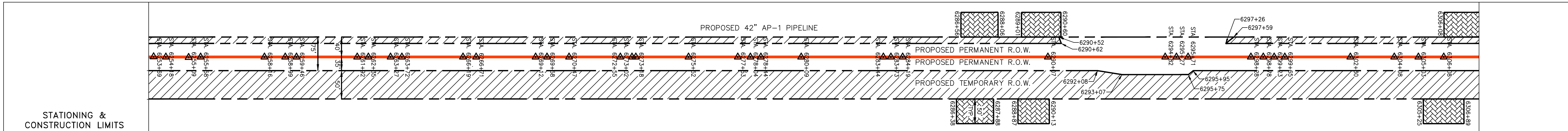
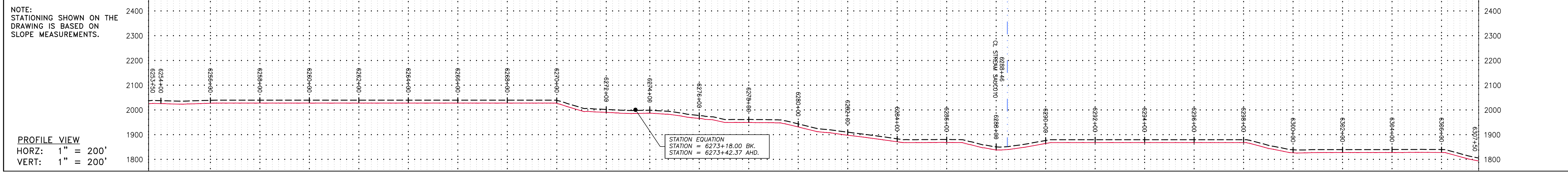
42" AP-1 PIPELINE
CONSTRUCTION ALIGNMENT STA: 6199+50 TO 6253+50
 AUGUSTA COUNTY, VIRGINIA
ATLANTIC COAST PIPELINE, LLC
 C/O DOMINION TRANSMISSION, INC.
 445 WEST MAIN STREET
 CLARKSBURG, WEST VIRGINIA, 26301

SCALE:	AS SHOWN
DATE:	07/22/16
DRAWN:	GPT
CHECKED:	DLH
APPROVED:	NET



PROJECT NO./DASH NO.	140468
TASK NO.	005
SUB TASK NO.	00
GROUP ID	D
DRAWING NO.	E162
162 OF 344	

7/14/16



LEGEND	
	PROPERTY LINE
	FENCE
	STREAM
	EXISTING GAS PIPELINE
	OVERHEAD UTILITY LINES
	PROPOSED GAS PIPELINE
	PROPOSED GAS PIPELINE (NO GROUND SURVEY)
	STORM SEWER
	WATER LINE
	SANITARY SEWER
	EDGE OF GRAVEL
	PROPOSED PERMANENT EASEMENT
	UTILITY POLE

	PROPOSED TEMPORARY R.O.W.
	EXTRA WORK SPACE
	WETLAND <small>(COLOR SHOWN TO PROVIDE CLARITY ONLY)</small>
	TOPSOIL SEGREGATION AREA
	AREA OF NO DISTURBANCE

- NOTES:**
- COORDINATE SYSTEM USED FOR MAPPING AND TOPOGRAPHY - UTM WITH NAD83 DATUM, ZONE 17, US SURVEY FOOT, CENTRAL MERIDIAN 81° W
 - CONTOURS AND TOPOGRAPHIC FEATURES WERE DERIVED BY AN ON THE GROUND SURVEY PERFORMED BY THE THRASHER GROUP, INC. ON 06-25-2014 THRU 08-26-2014 GPS SUB-METER ACCURACY.
 - AERIAL IMAGERY IS TAKEN FROM A SPRING 2015 FLIGHT BY KUCERA INTERNATIONAL INC.
 - THE PROPERTY LINES SHOWN ARE BASED ON GIS & TAX ASSESSMENT RECORDS (PROVIDED BY OTHERS), GAI & THE THRASHER GROUP MAKE NO GUARANTEE EITHER EXPRESSED OR IMPLIED AS TO THE ACCURACY OF THE RECORDS AS SHOWN ON THESE DRAWINGS.
 - WETLAND DATA SHOWN ON THE DRAWINGS WAS PROVIDED BY NRG.
 - THESE DRAWINGS ARE NOT INTENDED TO PROVIDE EROSION AND SEDIMENTATION CONTROL REQUIREMENTS. SEE EROSION AND SEDIMENTATION CONTROL PLANS FOR COMPLETE REQUIREMENTS AND BMP LOCATIONS.
 - ALL STATIONING SHOWN IS SLOPE STATIONING.

NO.	DATE	BY	CHKD.	APPD.	DESCRIPTION

7/14/16

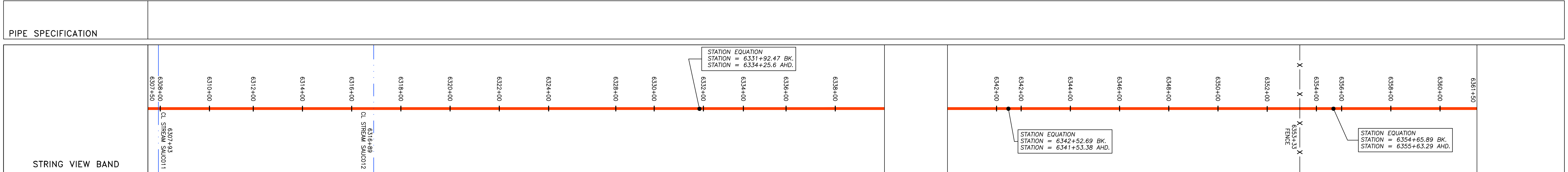
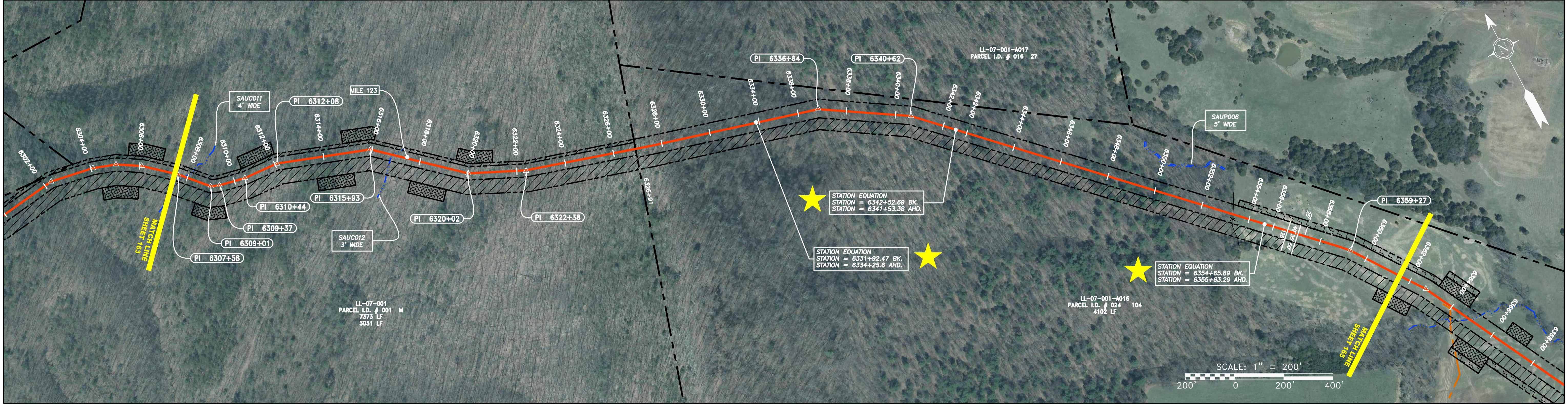
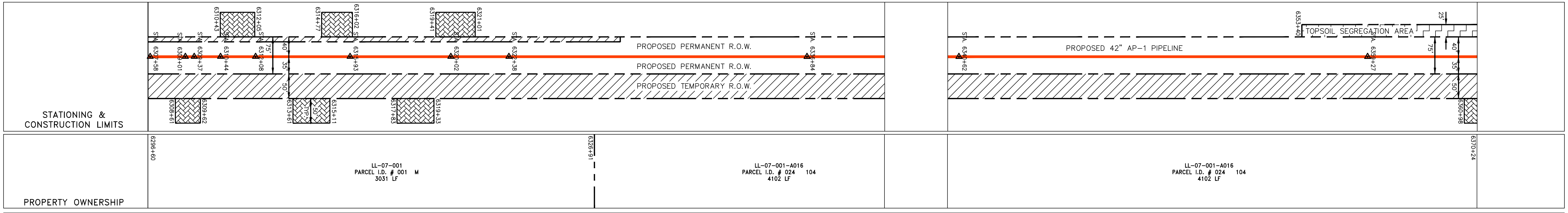
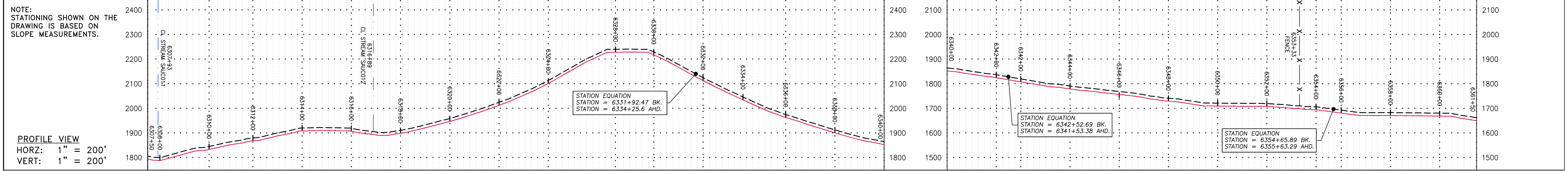
42" AP-1 PIPELINE
 CONSTRUCTION ALIGNMENT STA: 6253+50 TO 6307+50
 AUGUSTA COUNTY, VIRGINIA
 ATLANTIC COAST PIPELINE, LLC
 C/O DOMINION TRANSMISSION, INC.
 445 WEST MAIN STREET
 CLARKSBURG, WEST VIRGINIA, 26301

SCALE:	AS SHOWN
DATE:	07/22/16
DRAWN:	GPT
CHECKED:	DLH
APPROVED:	NET



SOUTHPOINTE OFFICE
 6000 TOWN CENTER BLVD.
 CANONSBURG, PA 15317
 724-873-3545

PROJECT NO./DASH NO.	140468
TASK NO.	005
SUB TASK NO.	00
GROUP ID	D
DRAWING NO.	E163
163 OF 344	



LEGEND

	PROPERTY LINE		STORM SEWER
	FENCE		WATER LINE
	STREAM		SANITARY SEWER
	EXISTING GAS PIPELINE		EDGE OF GRAVEL
	OVERHEAD UTILITY LINES		PROPOSED PERMANENT EASEMENT
	PROPOSED GAS PIPELINE		UTILITY POLE
	PROPOSED GAS PIPELINE (NO GROUND SURVEY)		

NOTES:

	PROPOSED TEMPORARY R.O.W.
	EXTRA WORK SPACE
	WETLAND (COLOR SHOWN TO PROVIDE CLARITY ONLY)
	TOPSOIL SEGREGATION AREA
	AREA OF NO DISTURBANCE

- COORDINATE SYSTEM USED FOR MAPPING AND TOPOGRAPHY - UTM WITH NAD83 DATUM, ZONE 17, US SURVEY FOOT, CENTRAL MERIDIAN 81° W
- CONTOURS AND TOPOGRAPHIC FEATURES WERE DERIVED BY AN ON THE GROUND SURVEY PERFORMED BY THE THRASHER GROUP, INC. ON 06-25-2014 THRU 08-26-2014 GPS SUB-METER ACCURACY.
- AERIAL IMAGERY IS TAKEN FROM A SPRING 2015 FLIGHT BY KUCERA INTERNATIONAL INC.
- THE PROPERTY LINES SHOWN ARE BASED ON GIS & TAX ASSESSMENT RECORDS (PROVIDED BY OTHERS), GAI & THE THRASHER GROUP MAKE NO GUARANTEE EITHER EXPRESSED OR IMPLIED AS TO THE ACCURACY OF THE RECORDS AS SHOWN ON THESE DRAWINGS.
- WETLAND DATA SHOWN ON THE DRAWINGS WAS PROVIDED BY NRG.
- THESE DRAWINGS ARE NOT INTENDED TO PROVIDE EROSION AND SEDIMENTATION CONTROL REQUIREMENTS. SEE EROSION AND SEDIMENTATION CONTROL PLANS FOR COMPLETE REQUIREMENTS AND BMP LOCATIONS.
- ALL STATIONING SHOWN IS SLOPE STATIONING.

NO.	DATE	BY	CHKD.	APPVD.	DESCRIPTION

7/14/16

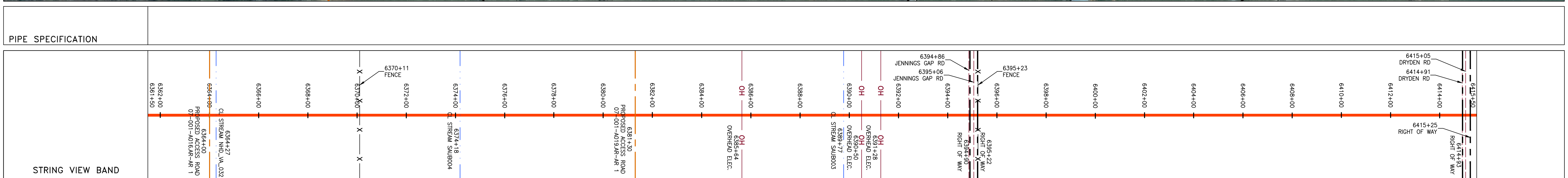
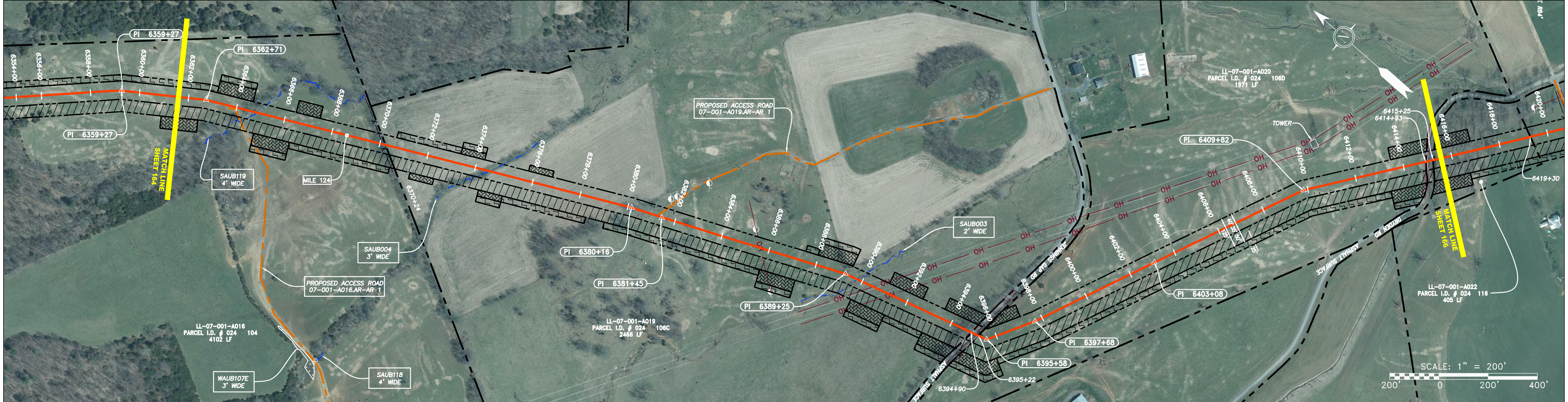
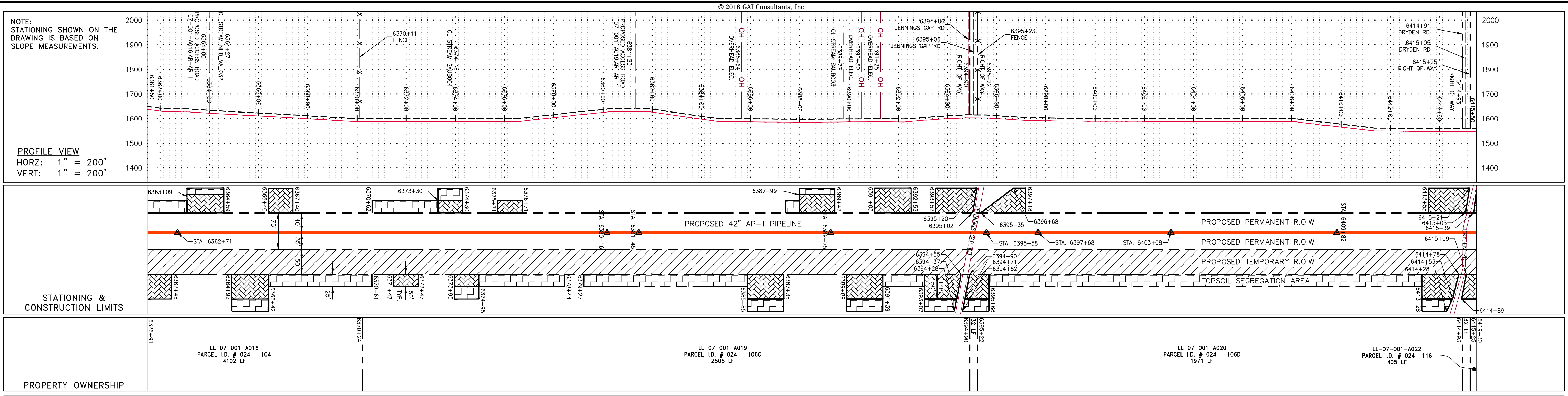
42" AP-1 PIPELINE
 CONSTRUCTION ALIGNMENT STA 6307+50 TO 6361+50
 AUGUSTA COUNTY, VIRGINIA

ATLANTIC COAST PIPELINE, LLC
 C/O DOMINION TRANSMISSION, INC.
 445 WEST MAIN STREET
 CLARKSBURG, WEST VIRGINIA, 26301

SCALE: AS SHOWN
 DATE: 07/22/16
 DRAWN: GPT
 CHECKED: DLH
 APPROVED: NET



PROJECT NO./DASH NO.	140468	
TASK NO.	005	00
GROUP ID	D	E164
164 OF 344		



LEGEND	
	PROPERTY LINE
	FENCE
	STREAM
	EXISTING GAS PIPELINE
	OVERHEAD UTILITY LINES
	PROPOSED GAS PIPELINE
	PROPOSED GAS PIPELINE (NO GROUND SURVEY)
	STORM SEWER
	WATER LINE
	SANITARY SEWER
	EDGE OF GRAVEL
	PROPOSED PERMANENT EASEMENT
	UTILITY POLE

	PROPOSED TEMPORARY R.O.W.
	EXTRA WORK SPACE
	WETLAND <small>(COLOR SHOWN TO PROVIDE CLARITY ONLY)</small>
	TOPSOIL SEGREGATION AREA
	AREA OF NO DISTURBANCE

- NOTES:**
- COORDINATE SYSTEM USED FOR MAPPING AND TOPOGRAPHY - UTM WITH NAD83 DATUM, ZONE 17, US SURVEY FOOT, CENTRAL MERIDIAN 81° W
 - CONTOURS AND TOPOGRAPHIC FEATURES WERE DERIVED BY AN ON THE GROUND SURVEY PERFORMED BY THE THRASHER GROUP, INC. ON 06-25-2014 THRU 08-26-2014 GPS SUB-METER ACCURACY.
 - AERIAL IMAGERY IS TAKEN FROM A SPRING 2015 FLIGHT BY KUCERA INTERNATIONAL INC.
 - THE PROPERTY LINES SHOWN ARE BASED ON GIS & TAX ASSESSMENT RECORDS (PROVIDED BY OTHERS), GAI & THE THRASHER GROUP MAKE NO GUARANTEE EITHER EXPRESSED OR IMPLIED AS TO THE ACCURACY OF THE RECORDS AS SHOWN ON THESE DRAWINGS.
 - WETLAND DATA SHOWN ON THE DRAWINGS WAS PROVIDED BY NRG.
 - THESE DRAWINGS ARE NOT INTENDED TO PROVIDE EROSION AND SEDIMENTATION CONTROL REQUIREMENTS. SEE EROSION AND SEDIMENTATION CONTROL PLANS FOR COMPLETE REQUIREMENTS AND BMP LOCATIONS.
 - ALL STATIONING SHOWN IS SLOPE STATIONING.

REVISIONS					
NO.	DATE	DWN.	CHKD.	APPVD.	DESCRIPTION

7/12/16

42" AP-1 PIPELINE
CONSTRUCTION ALIGNMENT STA 6361+50 TO 6415+50
AUGUSTA COUNTY, VIRGINIA

ATLANTIC COAST PIPELINE, LLC
C/O DOMINION TRANSMISSION, INC.
445 WEST MAIN STREET
 CLARKSBURG, WEST VIRGINIA, 26301

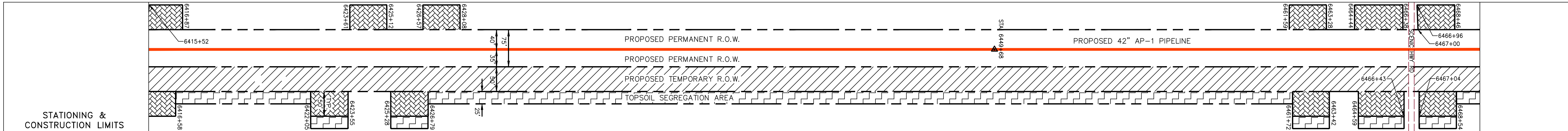
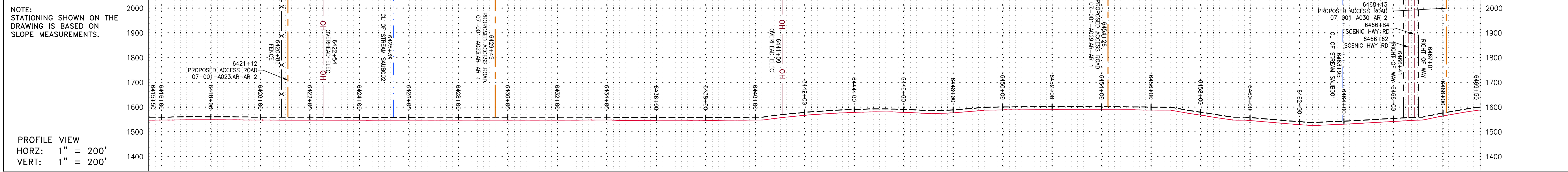
SCALE:	AS SHOWN
DATE:	07/22/16
DRAWN:	GPT
CHECKED:	DLH
APPROVED:	NET

SOUTHPOINTE OFFICE
 6000 TOWN CENTER BLDG.
 CANONSBURG, PA 15317
 724-873-3545

PROJECT NO./DASH NO.	140468
TASK NO. SUB TASK NO.	005 00
GROUP ID DRAWING NO.	D E165
165 OF 344	

GAI CAD FILE NO. R:\050-5159 - GAI - THRASHER - SERP - MAPPING\SURVEY_DRAWING\SEC 3\RR SHEETS 164-168 (21-25).DWG

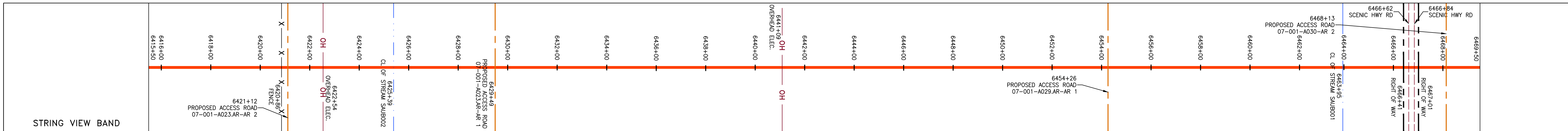
© 2016 GAI Consultants, Inc.



PROPERTY OWNERSHIP	PARCEL I.D. #	AREA (LF)
LL-07-001-A022	# 024 116	405 LF
LL-07-001-A023	# 024 117	1058 LF
LL-07-001-A024	# 024 130	1990 LF
LL-07-001-A029	# 024 151	1128 LF
LL-07-001-A030	# 024 128	535 LF
LL-07-001-A030	# 024 2106	2106 LF



PIPE SPECIFICATION	TEST #
CLASS 1 (TEST FOR CLASS 1)	A



LEGEND	
	PROPERTY LINE
	STORM SEWER
	FENCE
	WATER LINE
	STREAM
	EXISTING GAS PIPELINE
	SANITARY SEWER
	OVERHEAD UTILITY LINES
	EDGE OF GRAVEL
	PROPOSED GAS PIPELINE
	PROPOSED GAS PIPELINE (NO GROUND SURVEY)
	PROPOSED PERMANENT EASEMENT
	UTILITY POLE
	PROPOSED TEMPORARY R.O.W.
	EXTRA WORK SPACE
	WETLAND (COLOR SHOWN TO PROVIDE CLARITY ONLY)
	TOPSOIL SEGREGATION AREA
	AREA OF NO DISTURBANCE

- NOTES:**
- COORDINATE SYSTEM USED FOR MAPPING AND TOPOGRAPHY - UTM WITH NAD83 DATUM, ZONE 17, US SURVEY FOOT, CENTRAL MERIDIAN 81° W
 - CONTOURS AND TOPOGRAPHIC FEATURES WERE DERIVED BY AN ON THE GROUND SURVEY PERFORMED BY THE THRASHER GROUP, INC. ON 06-25-2014 THRU 08-26-2014 GPS SUB-METER ACCURACY.
 - AERIAL IMAGERY IS TAKEN FROM A SPRING 2015 FLIGHT BY KUCERA INTERNATIONAL INC.
 - THE PROPERTY LINES SHOWN ARE BASED ON GIS & TAX ASSESSMENT RECORDS (PROVIDED BY OTHERS), GAI & THE THRASHER GROUP MAKE NO GUARANTEE EITHER EXPRESSED OR IMPLIED AS TO THE ACCURACY OF THE RECORDS AS SHOWN ON THESE DRAWINGS.
 - WETLAND DATA SHOWN ON THE DRAWINGS WAS PROVIDED BY NRG.
 - THESE DRAWINGS ARE NOT INTENDED TO PROVIDE EROSION AND SEDIMENTATION CONTROL REQUIREMENTS. SEE EROSION AND SEDIMENTATION CONTROL PLANS FOR COMPLETE REQUIREMENTS AND BMP LOCATIONS.
 - ALL STATIONING SHOWN IS SLOPE STATIONING.

NO.	DATE	BY	CHKD.	APPD.	DESCRIPTION

7/12/16

42" AP-1 PIPELINE
CONSTRUCTION ALIGNMENT STA 6415+50 TO 6469+50
AUGUSTA COUNTY, VIRGINIA
ATLANTIC COAST PIPELINE, LLC
C/O DOMINION TRANSMISSION, INC.
445 WEST MAIN STREET
 CLARKSBURG, WEST VIRGINIA, 26301

SCALE:	AS SHOWN
DATE:	07/22/16
DRAWN:	GPT
CHECKED:	DLH
APPROVED:	NET



SOUTHPOINTE OFFICE
 6000 TOWN CENTER BLVD.
 CANONSBURG, PA 15317
 724-873-3545

PROJECT NO./DASH NO.	140468	
TASK NO.	005	SUB TASK NO. 00
GROUP ID	D	DRAWING NO. E166
166	OF	344