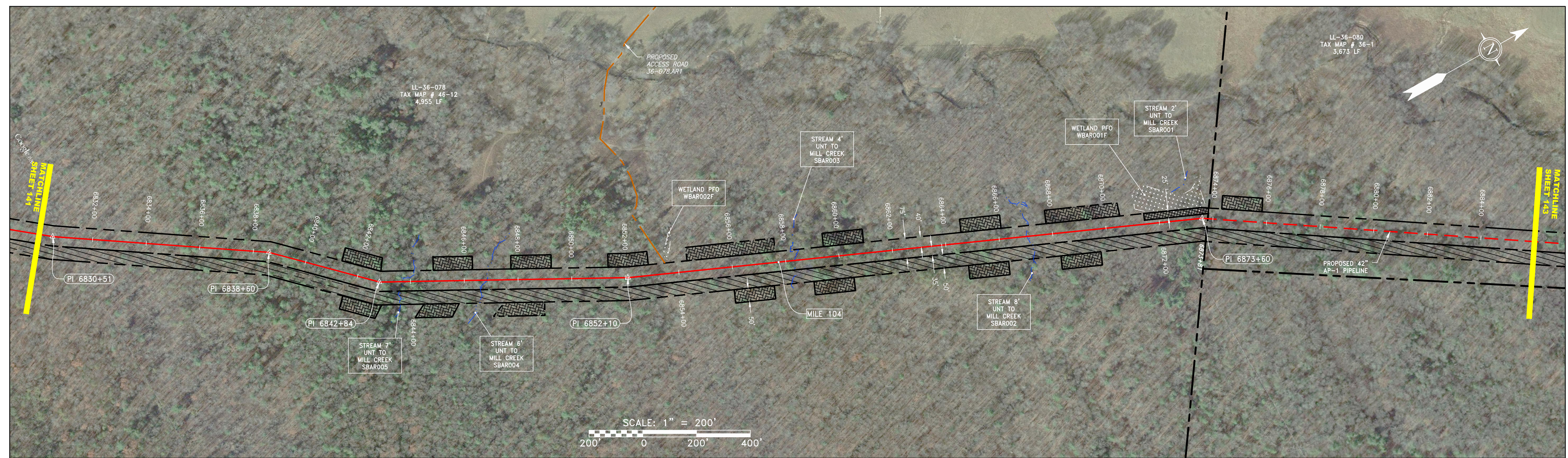
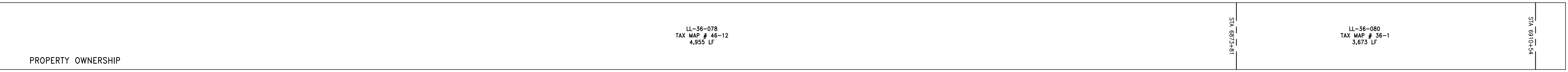
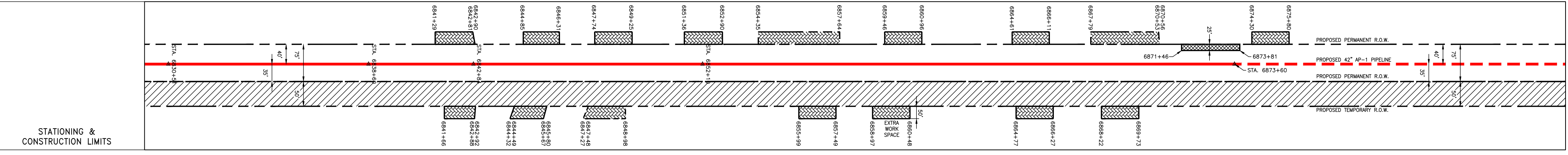
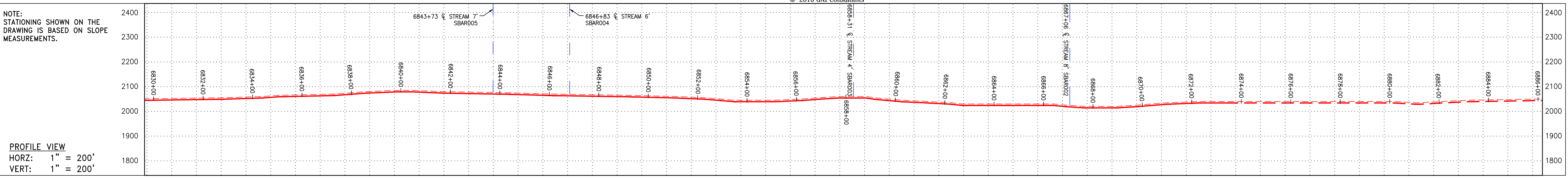
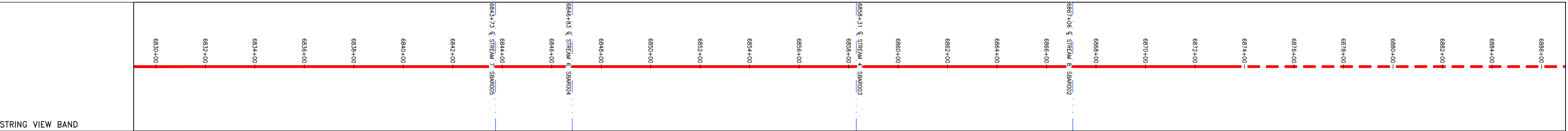


\\GAICONSULTANTS\LOCAL\BUPROJ\ENERGY\2014\C140468.00 - DOMINION - SOUTHEAST PIPE\CAD\MON FOREST ROUTE\DWG\_ALIGNMENT SHEETS\C140468-00-000-00-E-E139-E143.DWG



NOT TO SCALE  
PIPE SPECIFICATION



**LEGEND**

	PROPERTY LINE		EXTRA WORK SPACE		TOPSOIL SEGREGATION AREA
	FENCE		WETLAND		PROPOSED TEMPORARY R.O.W.
	STREAM		UTILITY POLE		EXISTING WELL
	EXISTING GAS PIPELINE		PROPOSED PERMANENT EASEMENT		
	OVERHEAD UTILITY LINES		PROPOSED PERMANENT R.O.W.		
	PROPOSED GAS PIPELINE		PROPOSED PERMANENT R.O.W. (NO GROUND SURVEY)		

**NOTES:**

- COORDINATE SYSTEM USED FOR MAPPING AND TOPOGRAPHY - UTM WITH NAD83 DATUM, ZONE 17, US SURVEY FOOT, CENTRAL MERIDIAN 81° W
- CONTOURS AND TOPOGRAPHIC FEATURES WERE DERIVED BY AN ON THE GROUND SURVEY PERFORMED BY MONALOH BASIN ENGINEERS, INC. ON 06-02-2014 THRU 06-26-2014 GPS SUB-METER ACCURACY.
- AERIAL IMAGERY IS TAKEN FROM A SPRING 2015 FLIGHT BY KUCERA INTERNATIONAL INC.
- THE PROPERTY LINES SHOWN ARE BASED ON GIS & TAX ASSESSMENT RECORDS (PROVIDED BY OTHERS). GAI & MONALOH BASIN ENGINEERS MAKE NO GUARANTEE EITHER EXPRESSED OR IMPLIED AS TO THE ACCURACY OF THE RECORDS AS SHOWN ON THESE DRAWINGS.
- WETLAND DATA SHOWN ON THE DRAWINGS WAS PROVIDED BY NRG.
- THESE DRAWINGS ARE NOT INTENDED TO PROVIDE EROSION AND SEDIMENTATION CONTROL REQUIREMENTS. SEE EROSION AND SEDIMENTATION CONTROL PLANS FOR COMPLETE REQUIREMENTS AND BMP LOCATIONS.
- ALL STATIONING SHOWN IS SLOPE STATIONING.

NO.	DATE	BY	CHKD.	APP'D.	DESCRIPTION

**7/18/16**

CONSTRUCTION ALIGNMENT STA 6830+00 TO 6886+00  
BATH COUNTY, VIRGINIA

ATLANTIC COAST PIPELINE, LLC  
C/O DOMINION TRANSMISSION, INC.  
445 W. MAIN STREET, CLARKSBURG, WV 26301

SCALE: AS SHOWN  
DATE: 7/26/16  
DRAWN: CJF  
CHECKED: DLH  
APPROVED: NET

**gai consultants**

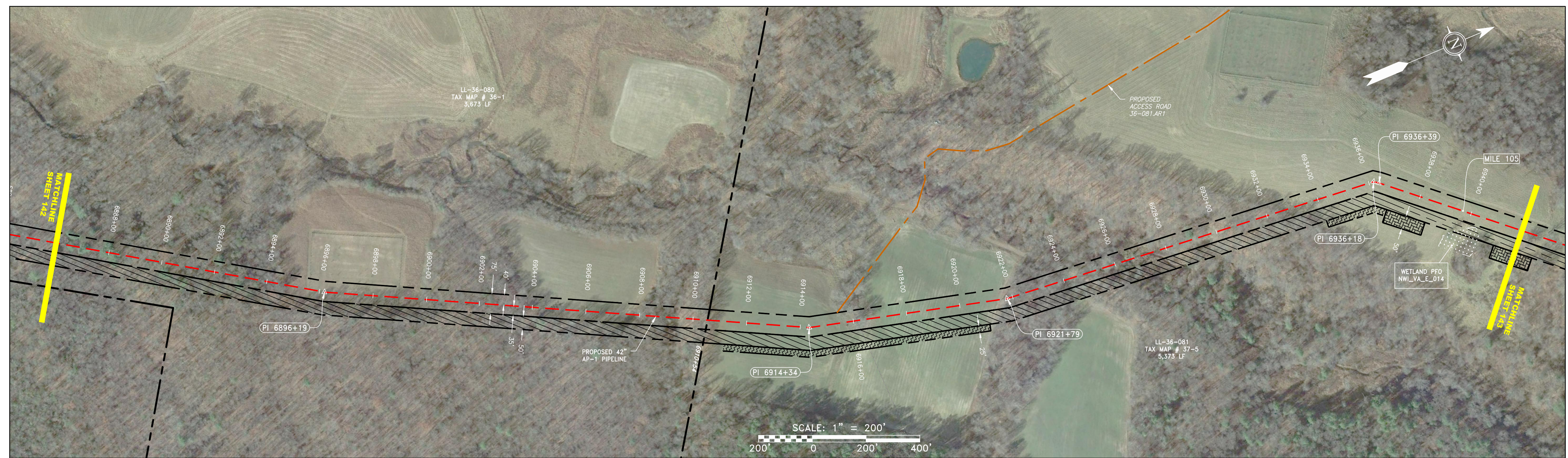
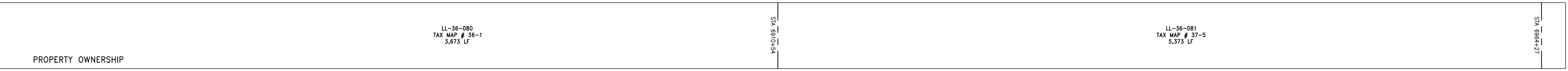
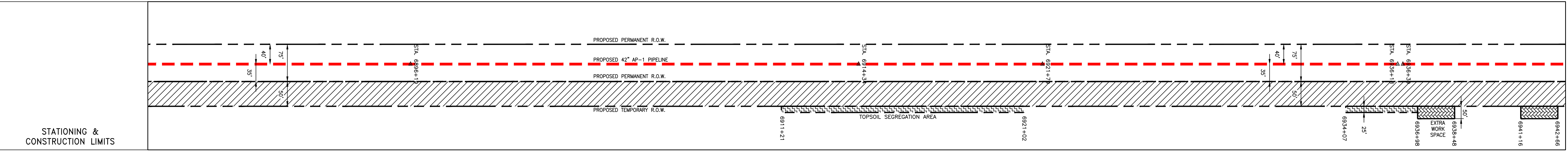
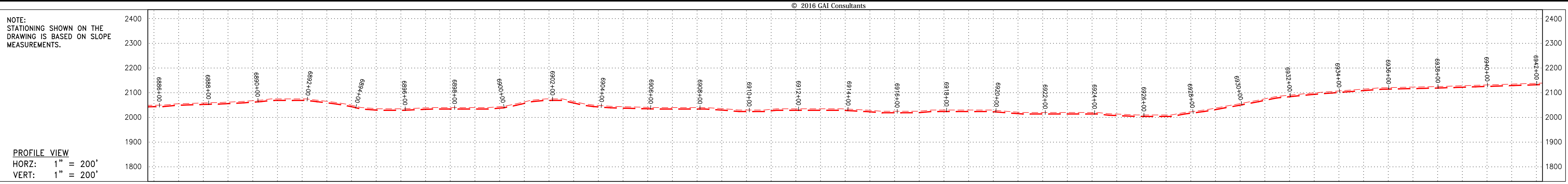
SOUTHPOINTE OFFICE  
6000 TOWN CENTER BLVD.  
SUITE 300 EAST  
CANONSBURG, PA 15317  
724-873-3545

**mbe monaloh basin engineers**

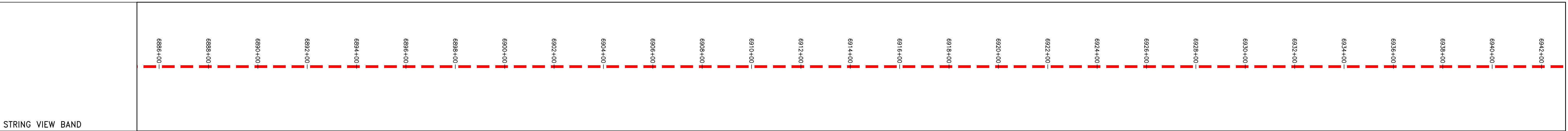
300 BUSINESS CENTER DRIVE  
PITTSBURGH, PA 15205  
412-788-2433

PROJECT NO./DASH NO. <b>140468</b>	
TASK NO. <b>005</b>	SUB TASK NO. <b>00</b>
GROUP ID <b>D</b>	DRAWING NO. <b>E142</b>
<b>142</b>	<b>OF 344</b>

\\GAICONSULTANTS.LOCAL\BUPROJ\ENERGY\2014\C140468.00 - DOMINION - SOUTHEAST PIPE\CAD\MON FOREST REROUTE\DWG\ALIGNMENT SHEETS\C140468-00-000-00-E-E139-E143.DWG



NOT TO SCALE  
PIPE SPECIFICATION



LEGEND	
	PROPERTY LINE
	FENCE
	STREAM
	EXISTING GAS PIPELINE
	OVERHEAD UTILITY LINES
	PROPOSED GAS PIPELINE
	PROPOSED ACCESS ROAD
	STORM SEWER
	WATER LINE
	SANITARY SEWER
	EDGE OF GRAVEL
	PROPOSED PERMANENT EASEMENT
	PROPOSED GAS PIPELINE (NO GROUND SURVEY)
	EXTRA WORK SPACE
	TOPSOIL SEGREGATION AREA
	AREA OF NO DISTURBANCE
	WETLAND (EXCLUDE SHOWN TO PROVIDE CLARITY ONLY)
	UTILITY POLE
	EXISTING WELL

- NOTES:**
- COORDINATE SYSTEM USED FOR MAPPING AND TOPOGRAPHY - UTM WITH NAD83 DATUM, ZONE 17, US SURVEY **FOOT, CENTRAL MERIDIAN 81' W**
  - CONTOURS AND TOPOGRAPHIC FEATURES WERE DERIVED BY AN ON THE GROUND SURVEY PERFORMED BY MONALOH BASIN ENGINEERS, INC. ON 06-02-2014 THRU 06-26-2014 GPS SUB-METER ACCURACY.
  - AERIAL IMAGERY IS TAKEN FROM A SPRING 2015 FLIGHT BY KUCERA INTERNATIONAL INC.
  - THE PROPERTY LINES SHOWN ARE BASED ON GIS & TAX ASSESSMENT RECORDS (PROVIDED BY OTHERS). GAI & MONALOH BASIN ENGINEERS MAKE NO GUARANTEE EITHER EXPRESSED OR IMPLIED AS TO THE ACCURACY OF THE RECORDS AS SHOWN ON THESE DRAWINGS.
  - WETLAND DATA SHOWN ON THE DRAWINGS WAS PROVIDED BY NRG.
  - THESE DRAWINGS ARE NOT INTENDED TO PROVIDE EROSION AND SEDIMENTATION CONTROL REQUIREMENTS. SEE EROSION AND SEDIMENTATION CONTROL PLANS FOR COMPLETE REQUIREMENTS AND BMP LOCATIONS.
  - ALL STATIONING SHOWN IS SLOPE STATIONING.

REVISIONS			
NO.	DATE	CHKD.	APPD.

7/18/16

42" AP-1 PIPELINE  
CONSTRUCTION ALIGNMENT STA 6886+00 TO 6942+00  
BATH COUNTY, VIRGINIA

ATLANTIC COAST PIPELINE, LLC  
C/O DOMINION TRANSMISSION, INC.  
445 W. MAIN STREET, CLARKSBURG, WV 26301

SCALE: AS SHOWN  
DATE: 7/26/16  
DRAWN: CJF  
CHECKED: DLH  
APPROVED: NET

**gai consultants**  
SOUTHPOINTE OFFICE  
6000 TOWN CENTER BLVD.  
SUITE 300 EAST  
CANONSBURG, PA 15317  
724-873-3545

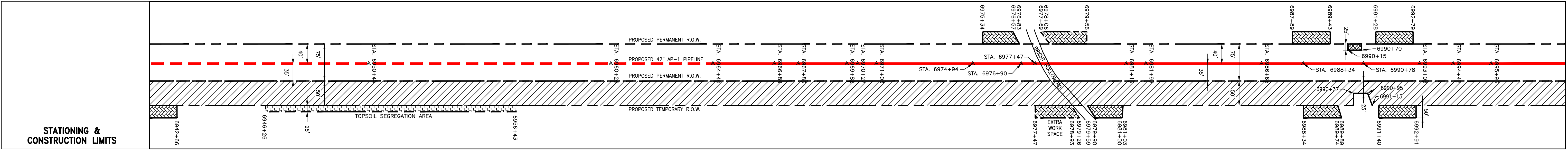
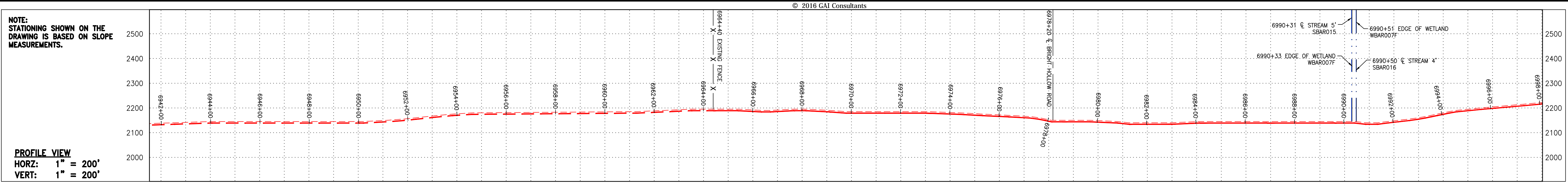
**mbe**  
monaloh basin  
engineers  
300 BUSINESS CENTER DRIVE  
PITTSBURGH, PA 15205  
412-788-2433

PROJECT NO./DASH NO.  
**140468**

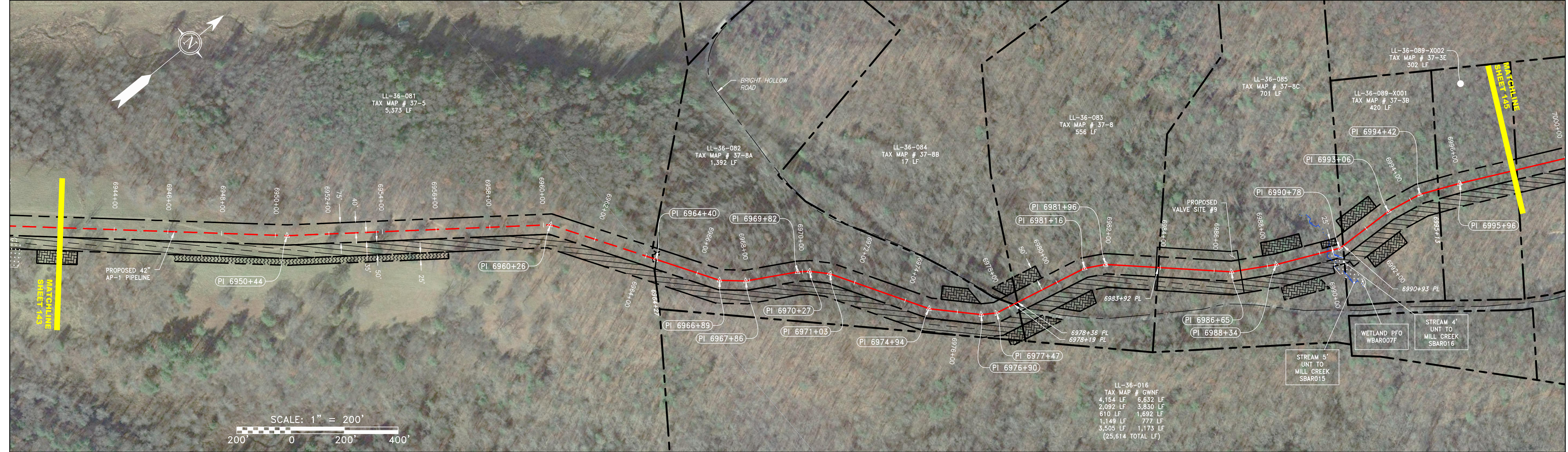
TASK NO.	SUB TASK NO.
<b>005</b>	<b>00</b>
GROUP ID	DRAWING NO.
<b>D</b>	<b>E143</b>

143 OF 344

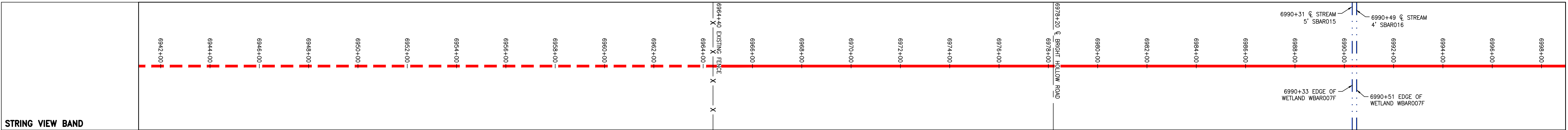
G:\CONSULTANTS\LOCAL\BUPROJ\ENERGY\2014\C140468.00 - DOMINION - SOUTHEAST PIPE\CAD\MON FOREST REROUTE\DWG\_ALIGNMENT SHEETS\C140468-00-000-00-E-E144-E148.DWG



PROPERTY OWNERSHIP	STATIONING
LL-36-081 TAX MAP # 37-5 5,373 LF	STA 6942+27
LL-36-082 TAX MAP # 37-8A 1,392 LF	STA 6964+00
LL-36-083 TAX MAP # 37-8 556 LF	STA 6976+36
LL-36-084 TAX MAP # 37-8B 17 LF	STA 6978+20
LL-36-085 TAX MAP # 37-8C 701 LF	STA 6990+00
LL-36-089-X001 TAX MAP # 37-3B 420 LF	STA 6992+00
LL-36-089-X002 TAX MAP # 37-3E 302 LF	STA 6998+15



**NOT TO SCALE**  
**PIPE SPECIFICATION**



<p><b>LEGEND</b></p> <p>— X — X — X — X — X — X —</p> <p>— . . . . .</p> <p>— G — G — G — G —</p> <p>— OH — OH — OH — OH —</p> <p>— — — — —</p>	<p>PROPERTY LINE</p> <p>FENCE</p> <p>STREAM</p> <p>EXISTING GAS PIPELINE</p> <p>OVERHEAD UTILITY LINES</p> <p>PROPOSED GAS PIPELINE</p>	<p>— — — — —</p> <p>— W — W — W — W —</p> <p>— SAN — SAN —</p> <p>— — — — —</p> <p>— — — — —</p> <p>— — — — —</p>	<p>PROPOSED ACCESS ROAD</p> <p>STORM SEWER</p> <p>WATER LINE</p> <p>SANITARY SEWER</p> <p>EDGE OF GRAVEL</p> <p>PROPOSED PERMANENT EASEMENT</p> <p>PROPOSED GAS PIPELINE (NO GROUND SURVEY)</p>	<p> EXTRA WORK SPACE</p> <p> AREA OF NO DISTURBANCE</p> <p> WETLAND <small>(EXCEPT WHERE SHOWN TO PROVIDE CLARITY ONLY)</small></p> <p> UTILITY POLE</p> <p> EXISTING WELL</p>	<p> TOPSOIL SEGREGATION AREA</p> <p> PROPOSED TEMPORARY R.O.W.</p> <p>PTP = PROPOSED TEMPORARY R.O.W. PPR = PROPOSED PERMANENT R.O.W. EWSA = EXTRA WORK SPACE AREA TSA = TOPSOIL SEGREGATION AREA</p>	<p><b>NOTES:</b></p> <ol style="list-style-type: none"> <li>COORDINATE SYSTEM USED FOR MAPPING AND TOPOGRAPHY - UTM WITH NAD83 DATUM, ZONE 17, US SURVEY <b>FOOT, CENTRAL MERIDIAN 81° W</b></li> <li>CONTOURS AND TOPOGRAPHIC FEATURES WERE DERIVED BY AN ON THE GROUND SURVEY PERFORMED BY MONALOH BASIN ENGINEERS, INC. ON 06-02-2014 THRU 06-26-2014 GPS SUB-METER ACCURACY.</li> <li>AERIAL IMAGERY IS TAKEN FROM A SPRING 2015 FLIGHT BY KUCERA INTERNATIONAL INC.</li> <li>THE PROPERTY LINES SHOWN ARE BASED ON GIS &amp; TAX ASSESSMENT RECORDS (PROVIDED BY OTHERS). GAI &amp; MONALOH BASIN ENGINEERS MAKE NO GUARANTEE EITHER EXPRESSED OR IMPLIED AS TO THE ACCURACY OF THE RECORDS AS SHOWN ON THESE DRAWINGS.</li> <li>WETLAND DATA SHOWN ON THE DRAWINGS WAS PROVIDED BY NRG.</li> <li>THESE DRAWINGS ARE NOT INTENDED TO PROVIDE EROSION AND SEDIMENTATION CONTROL REQUIREMENTS. SEE EROSION AND SEDIMENTATION CONTROL PLANS FOR COMPLETE REQUIREMENTS AND BMP LOCATIONS.</li> <li>ALL STATIONING SHOWN IS SLOPE STATIONING.</li> </ol>
---	---	---	---	--	---	--

NO.	DATE	BY	CHKD.	APPD.	DESCRIPTION

**7/18/16**

**CONSTRUCTION ALIGNMENT STA 6942+00 TO 6998+00**  
BATH COUNTY, VIRGINIA

**ATLANTIC COAST PIPELINE, LLC**  
C/O DOMINION TRANSMISSION, INC.  
445 W. MAIN STREET, CLARKSBURG, WV 26301

SCALE: AS SHOWN  
DATE: 7/26/16  
DRAWN: CJF  
CHECKED: DLH  
APPROVED: NET

**gai consultants**

SOUTHPOINTE OFFICE  
6000 TOWN CENTER BLVD.  
SUITE 300 EAST  
CANONSBURG, PA 15317  
724-873-3545

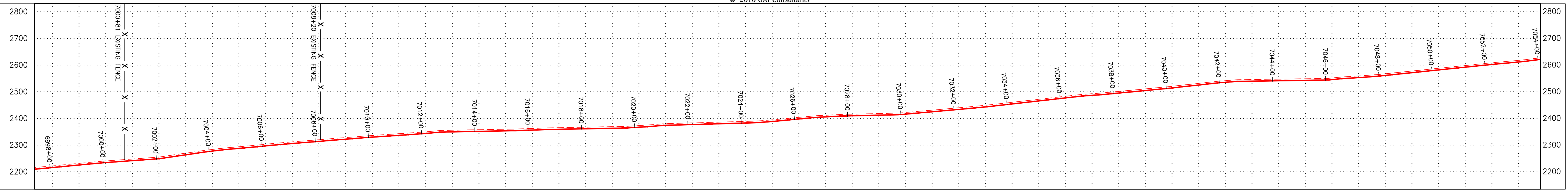
**mbe**  
monaloh basin engineers

300 BUSINESS CENTER DRIVE  
PITTSBURGH, PA 15205  
412-788-2433

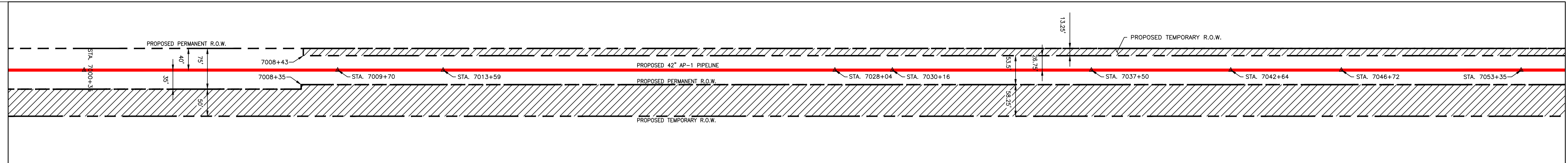
PROJECT NO./DASH NO.	<b>140468</b>	
TASK NO.	005	SUB TASK NO. 00
GROUP ID	D	DRAWING NO. E144
144 OF 344		7/26/2016 10:43 AM

NOTE:  
STATIONING SHOWN ON THE  
DRAWING IS BASED ON SLOPE  
MEASUREMENTS.

PROFILE VIEW  
HORZ: 1" = 200'  
VERT: 1" = 200'

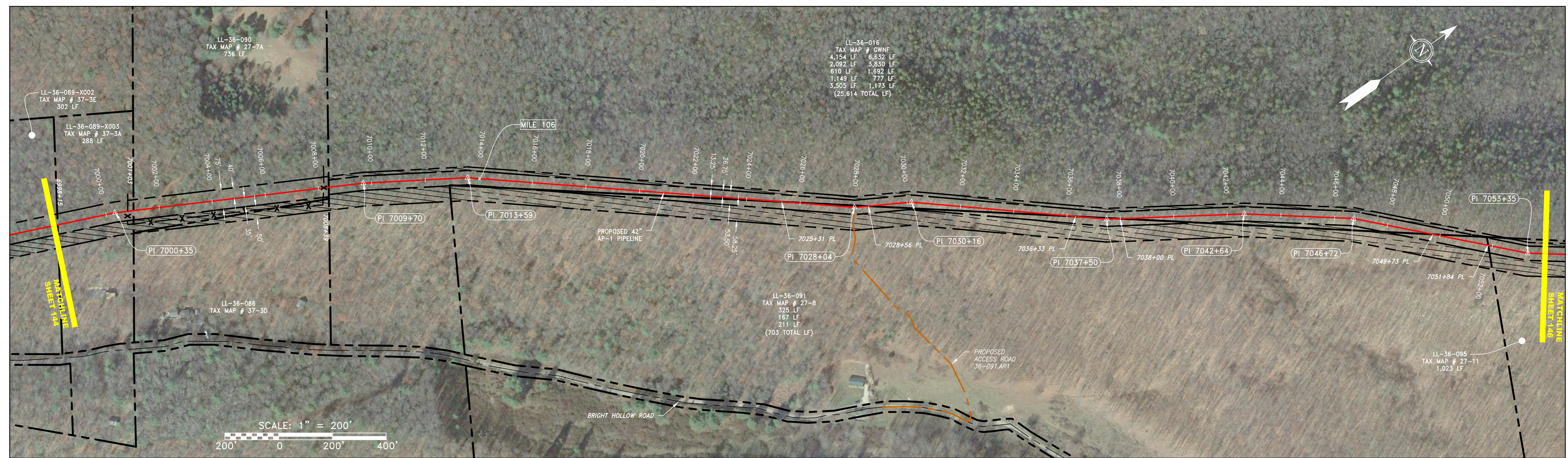


STATIONING &  
CONSTRUCTION LIMITS

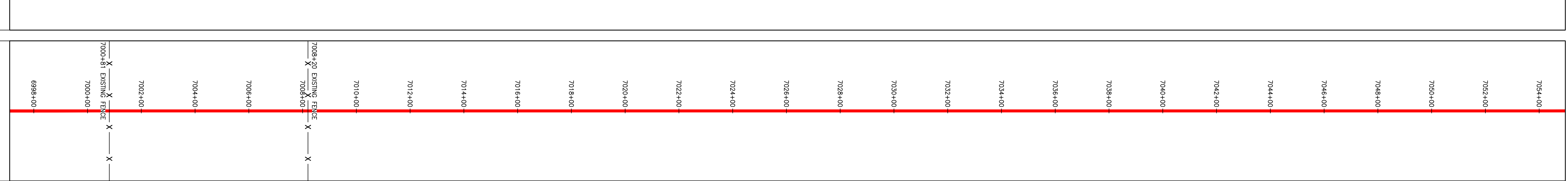


PROPERTY OWNERSHIP

LL-36-089-Y002 TAX MAP # 37-3E 302 LF	LL-36-089-Y003 TAX MAP # 37-3A 288 LF	LL-36-090 TAX MAP # 27-7A 736 LF	LL-36-016 TAX MAP # GWNF 1,692 LF	LL-36-091 TAX MAP # 27-8 325 LF	LL-36-016 TAX MAP # GWNF 777 LF	LL-36-091 TAX MAP # 27-8 167 LF	LL-36-016 TAX MAP # GWNF 1,173 LF	LL-36-091 TAX MAP # 27-8 211 LF	LL-36-095 TAX MAP # 27-11 1,023 LF
---	---	--	---	---------------------------------------	---------------------------------------	---------------------------------------	---	---------------------------------------	--



NOT TO SCALE  
PIPE SPECIFICATION



LEGEND

— X — X — X — X — X —	PROPERTY LINE	— W — W — W — W —	PROPOSED ACCESS ROAD	[Hatched Box]	EXTRA WORK SPACE	[Hatched Box]	TOPSOIL SEGREGATION AREA
— X — X — X — X — X —	FENCE	— SAN — SAN —	STORM SEWER	[Cross-hatched Box]	AREA OF NO DISTURBANCE	[Hatched Box]	PROPOSED TEMPORARY R.O.W.
— G — G — G — G — G —	STREAM	— — — — —	WATER LINE	[Green Box]	WETLAND (EXCEPT WHERE SHOWN TO PROVIDE CLARITY ONLY)	[Hatched Box]	UTILITY POLE
— G — G — G — G — G —	EXISTING GAS PIPELINE	— — — — —	SANITARY SEWER	[Green Box]	EXISTING WELL	[Hatched Box]	
— OH — OH — OH — OH —	OVERHEAD UTILITY LINES	— — — — —	EDGE OF GRAVEL	[Green Box]			
— — — — —	PROPOSED GAS PIPELINE	— — — — —	PROPOSED PERMANENT EASEMENT				
		— — — — —	PROPOSED PERMANENT R.O.W.				
		— — — — —	PROPOSED TEMPORARY R.O.W.				
		— — — — —	PROPOSED GAS PIPELINE (NO GROUND SURVEY)				

- NOTES:**
- COORDINATE SYSTEM USED FOR MAPPING AND TOPOGRAPHY - UTM WITH NAD83 DATUM, ZONE 17, US SURVEY FOOT, CENTRAL MERIDIAN 81° W
  - CONTOURS AND TOPOGRAPHIC FEATURES WERE DERIVED BY AN ON THE GROUND SURVEY PERFORMED BY MONALOH BASIN ENGINEERS, INC. ON 06-02-2014 THRU 06-26-2014 GPS SUB-METER ACCURACY.
  - AERIAL IMAGERY IS TAKEN FROM A SPRING 2015 FLIGHT BY KUCERA INTERNATIONAL INC.
  - THE PROPERTY LINES SHOWN ARE BASED ON GIS & TAX ASSESSMENT RECORDS (PROVIDED BY OTHERS). GAI & MONALOH BASIN ENGINEERS MAKE NO GUARANTEE EITHER EXPRESSED OR IMPLIED AS TO THE ACCURACY OF THE RECORDS AS SHOWN ON THESE DRAWINGS.
  - WETLAND DATA SHOWN ON THE DRAWINGS WAS PROVIDED BY NRG.
  - THESE DRAWINGS ARE NOT INTENDED TO PROVIDE EROSION AND SEDIMENTATION CONTROL REQUIREMENTS. SEE EROSION AND SEDIMENTATION CONTROL PLANS FOR COMPLETE REQUIREMENTS AND BMP LOCATIONS.
  - ALL STATIONING SHOWN IS SLOPE STATIONING.

NO.	DATE	CHKD.	APPD.	DESCRIPTION

7/18/16

42" AP-1 PIPELINE  
CONSTRUCTION ALIGNMENT STA 6998+00 TO 7054+00  
BATH COUNTY, VIRGINIA

ATLANTIC COAST PIPELINE, LLC  
C/O DOMINION TRANSMISSION, INC.  
445 W. MAIN STREET, CLARKSBURG, WV 26301

SCALE: AS SHOWN  
DATE: 7/26/16  
DRAWN: CJF  
CHECKED: DLH  
APPROVED: NET

gai consultants

SOUTHPOINTE OFFICE  
6000 TOWN CENTER BLVD.  
SUITE 300 EAST  
CANONSBURG, PA 15317  
724-873-3545

mbe  
monaloh basin  
engineers

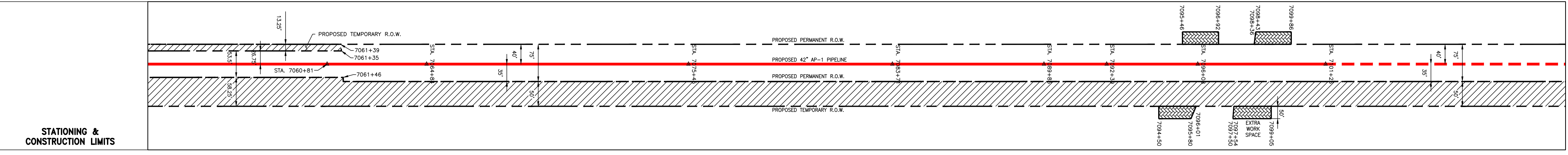
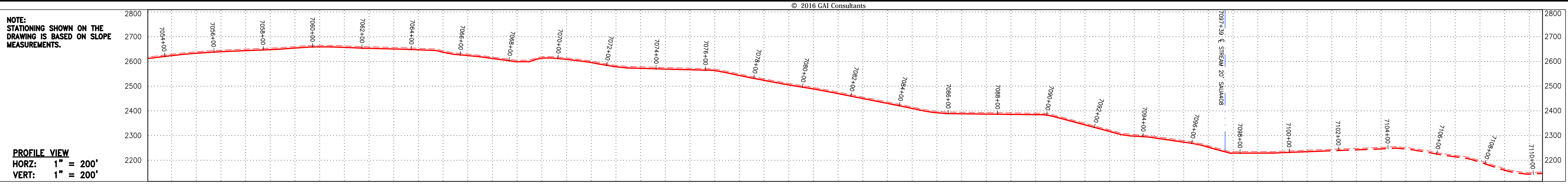
300 BUSINESS CENTER DRIVE  
PITTSBURGH, PA 15205  
412-788-2433

PROJECT NO./DASH NO.  
140468

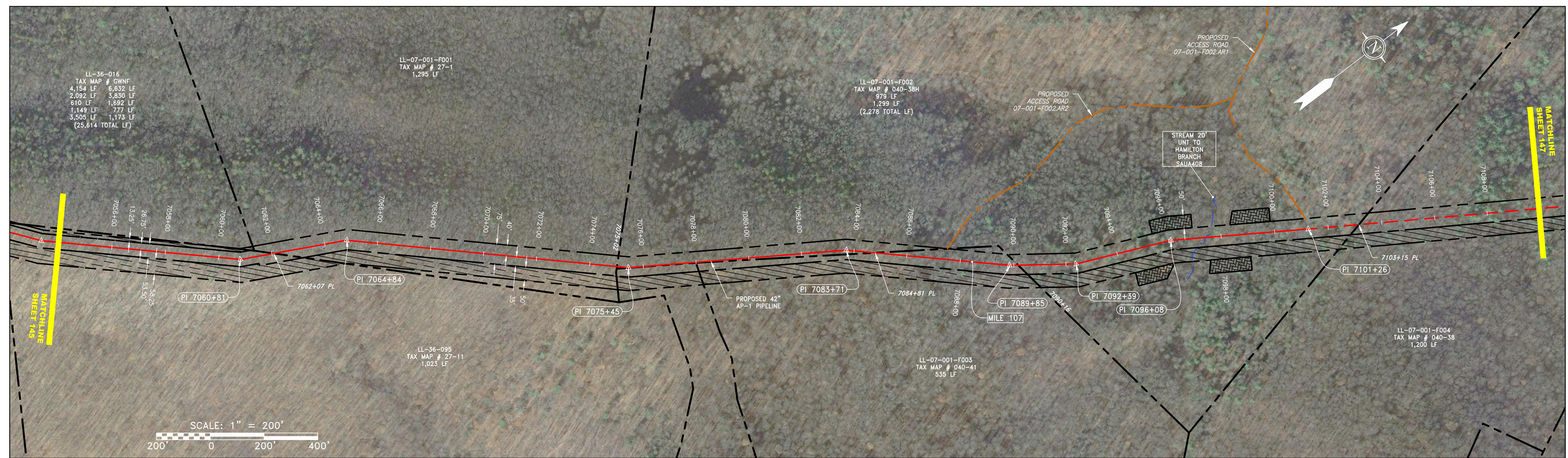
TASK NO. SUB TASK NO.  
005 00

GROUP ID DRAWING NO.  
D E145

145 OF 344



PROPERTY OWNERSHIP	STATIONING
LL-36-095 TAX MAP # 27-11 1,023 LF	SIA 7062+07
LL-07-001-F001 TAX MAP # 27-1 1,295 LF	SIA 7075+02
LL-07-001-F002 TAX MAP # 040-38H 979 LF	SIA 7084+81
LL-07-001-F003 TAX MAP # 040-41 535 LF	SIA 7090+16
LL-07-001-F002 TAX MAP # 040-38H 1,299 LF	SIA 7103+15
LL-07-001-F004 TAX MAP # 040-38 1,200 LF	SIA 7115+15



NOT TO SCALE	
<b>PIPE SPECIFICATION</b>	



LEGEND	
	PROPERTY LINE
	FENCE
	STREAM
	EXISTING GAS PIPELINE
	OVERHEAD UTILITY LINES
	PROPOSED GAS PIPELINE
	PROPOSED ACCESS ROAD
	STORM SEWER
	SANITARY SEWER
	EDGE OF GRAVEL
	PROPOSED PERMANENT EASEMENT
	WETLAND <small>(EXCLUDE SHOWN TO PROVIDE CLARITY ONLY)</small>
	UTILITY POLE
	EXISTING WELL
	EXTRA WORK SPACE
	TOPSOIL SEGREGATION AREA
	PROPOSED TEMPORARY R.O.W.

- NOTES:**
- COORDINATE SYSTEM USED FOR MAPPING AND TOPOGRAPHY - UTM WITH NAD83 DATUM, ZONE 17, US SURVEY **FOOT, CENTRAL MERIDIAN 81° W**
  - CONTOURS AND TOPOGRAPHIC FEATURES WERE DERIVED BY AN ON THE GROUND SURVEY PERFORMED BY MONALOH BASIN ENGINEERS, INC. ON 06-02-2014 THRU 06-26-2014 GPS SUB-METER ACCURACY.
  - AERIAL IMAGERY IS TAKEN FROM A SPRING 2015 FLIGHT BY KUCERA INTERNATIONAL INC.
  - THE PROPERTY LINES SHOWN ARE BASED ON GIS & TAX ASSESSMENT RECORDS (PROVIDED BY OTHERS). GAI & MONALOH BASIN ENGINEERS MAKE NO GUARANTEE EITHER EXPRESSED OR IMPLIED AS TO THE ACCURACY OF THE RECORDS AS SHOWN ON THESE DRAWINGS.
  - WETLAND DATA SHOWN ON THE DRAWINGS WAS PROVIDED BY NRG.
  - THESE DRAWINGS ARE NOT INTENDED TO PROVIDE EROSION AND SEDIMENTATION CONTROL REQUIREMENTS. SEE EROSION AND SEDIMENTATION CONTROL PLANS FOR COMPLETE REQUIREMENTS AND BMP LOCATIONS.
  - ALL STATIONING SHOWN IS SLOPE STATIONING.

REVISIONS				
NO.	DATE	CHKD.	APPD.	DESCRIPTION

**7/18/16**

CONSTRUCTION ALIGNMENT STA 7054+00 TO 7110+00  
BATH & AUGUSTA COUNTIES, VIRGINIA

ATLANTIC COAST PIPELINE, LLC  
C/O DOMINION TRANSMISSION, INC.  
445 W. MAIN STREET, CLARKSBURG, WV 26301

SCALE:	AS SHOWN
DATE:	7/26/16
DRAWN:	CJF
CHECKED:	DLH
APPROVED:	NET

**gai consultants**

SOUTHPOINTE OFFICE  
6000 TOWN CENTER BLVD.  
SUITE 300 EAST  
CANONSBURG, PA 15317  
724-873-3545

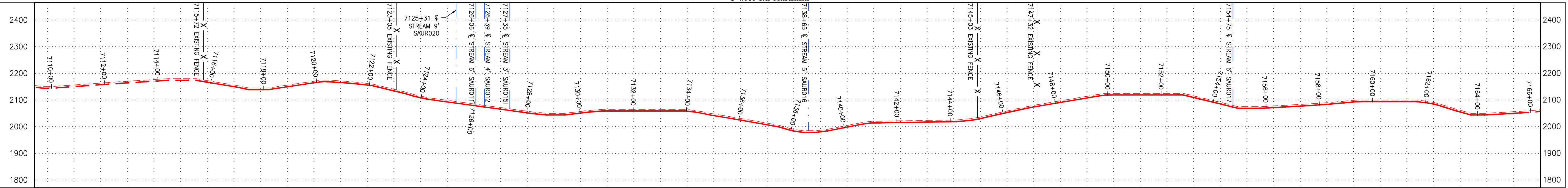
**mbe**  
monaloh basin engineers

300 BUSINESS CENTER DRIVE  
PITTSBURGH, PA 15205  
412-788-2433

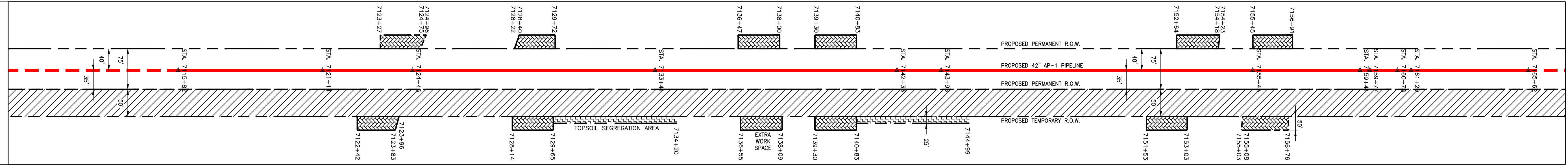
PROJECT NO./DASH NO.	140468	
TASK NO.	005	SUB TASK NO. 00
GROUP ID	D	DRAWING NO. E146
146 OF 344		

NOTE: STATIONING SHOWN ON THE DRAWING IS BASED ON SLOPE MEASUREMENTS.

PROFILE VIEW  
HORZ: 1" = 200'  
VERT: 1" = 200'

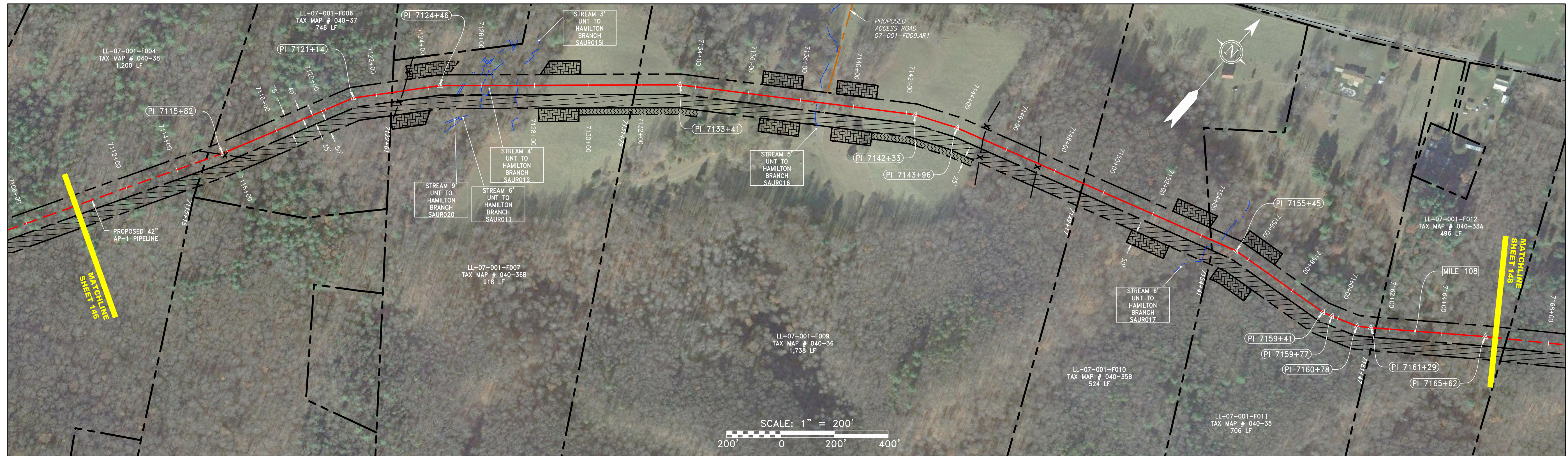


STATIONING & CONSTRUCTION LIMITS

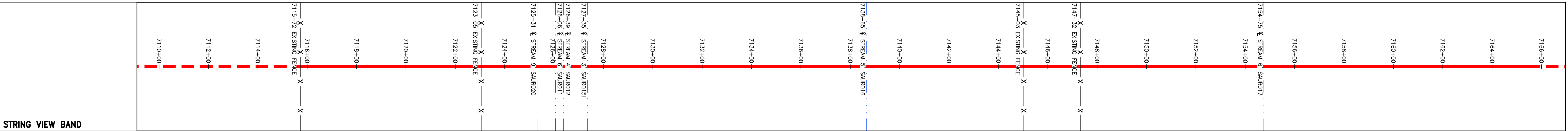


PROPERTY OWNERSHIP

LL-07-001-F004 TAX MAP # 040-38 1,200 LF	LL-07-001-F006 TAX MAP # 040-37 746 LF	LL-07-001-F007 TAX MAP # 040-36B 918 LF	LL-07-001-F009 TAX MAP # 040-36 1,738 LF	LL-07-001-F010 TAX MAP # 040-35B 524 LF	LL-07-001-F011 TAX MAP # 040-35 706 LF	LL-07-001-F012 TAX MAP # 040-35A 496 LF
--	--	---	--	---	--	---



NOT TO SCALE  
PIPE SPECIFICATION



LEGEND		NOTES:	
	PROPERTY LINE	1.	COORDINATE SYSTEM USED FOR MAPPING AND TOPOGRAPHY - UTM WITH NAD83 DATUM, ZONE 17, US SURVEY FOOT, CENTRAL MERIDIAN 81° W
	FENCE	2.	CONTOURS AND TOPOGRAPHIC FEATURES WERE DERIVED BY AN ON THE GROUND SURVEY PERFORMED BY MONALOH BASIN ENGINEERS, INC. ON 06-02-2014 THRU 06-26-2014 GPS SUB-METER ACCURACY.
	STREAM	3.	AERIAL IMAGERY IS TAKEN FROM A SPRING 2015 FLIGHT BY KUCERA INTERNATIONAL INC.
	EXISTING GAS PIPELINE	4.	THE PROPERTY LINES SHOWN ARE BASED ON GIS & TAX ASSESSMENT RECORDS (PROVIDED BY OTHERS). GAI & MONALOH BASIN ENGINEERS MAKE NO GUARANTEE EITHER EXPRESSED OR IMPLIED AS TO THE ACCURACY OF THE RECORDS AS SHOWN ON THESE DRAWINGS.
	OVERHEAD UTILITY LINES	5.	WETLAND DATA SHOWN ON THE DRAWINGS WAS PROVIDED BY NRG.
	PROPOSED GAS PIPELINE	6.	THESE DRAWINGS ARE NOT INTENDED TO PROVIDE EROSION AND SEDIMENTATION CONTROL REQUIREMENTS. SEE EROSION AND SEDIMENTATION CONTROL PLANS FOR COMPLETE REQUIREMENTS AND BMP LOCATIONS.
	PROPOSED ACCESS ROAD	7.	ALL STATIONING SHOWN IS SLOPE STATIONING.
	STORM SEWER		
	WATER LINE		
	SANITARY SEWER		
	EDGE OF GRAVEL		
	PROPOSED PERMANENT EASEMENT		
	PROPOSED GAS PIPELINE (NO GROUND SURVEY)		
	EXTRA WORK SPACE		
	TOPSOIL SEGREGATION AREA		
	AREA OF NO DISTURBANCE		
	WETLAND (EXCEPT WHERE SHOWN TO PROVIDE CLARITY ONLY)		
	UTILITY POLE		
	EXISTING WELL		

REVISIONS

7/18/16

42" AP-1 PIPELINE  
CONSTRUCTION ALIGNMENT STA 7110+00 TO 7166+00  
AUGUSTA COUNTY, VIRGINIA

ATLANTIC COAST PIPELINE, LLC  
C/O DOMINION TRANSMISSION, INC.  
445 W. MAIN STREET, CLARKSBURG, WV 26301

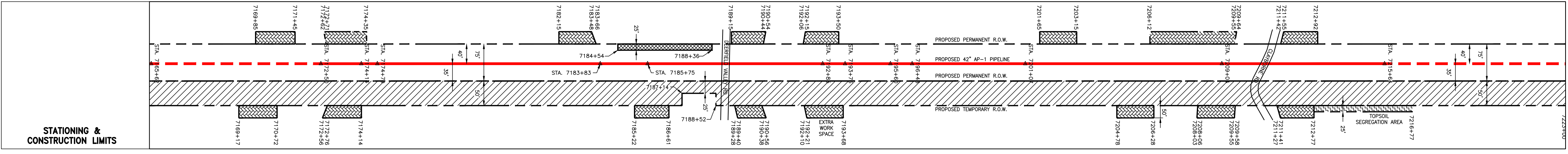
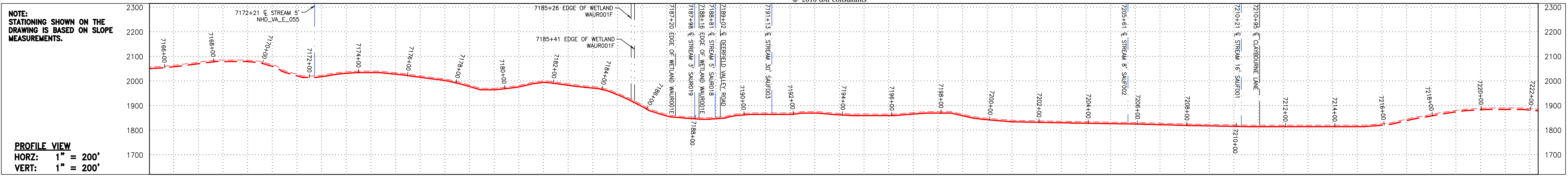
SCALE: AS SHOWN  
DATE: 7/26/16  
DRAWN: CJF  
CHECKED: DLH  
APPROVED: NET



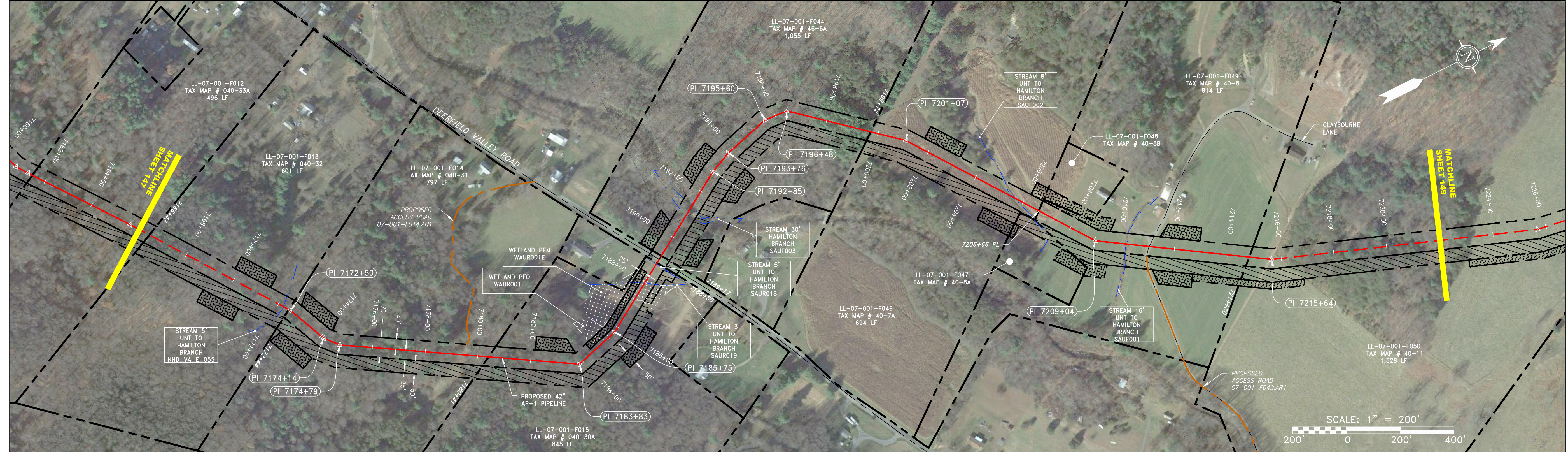
SOUTHPOINTE OFFICE  
6000 TOWN CENTER BLVD.  
SUITE 300 EAST  
CANONSBURG, PA 15317  
724-873-3545

PROJECT NO./DASH NO. <b>140468</b>	
TASK NO. <b>005</b>	SUB TASK NO. <b>00</b>
GROUP ID <b>D</b>	DRAWING NO. <b>E147</b>
<b>147</b>	<b>OF 344</b>

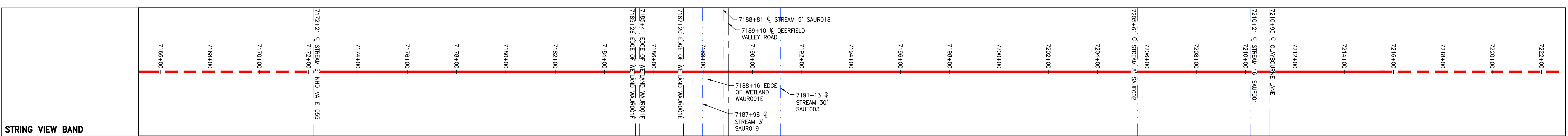
GAICONSULTANTS\LOCAL\BUPROJ\ENERGY\2014\C140468.00 - DOMINION PIPE\CAD\MON FOREST ROUTE\DWG\ALIGNMENT SHEETS\C140468-00-000-00-E-E144-E148.DWG



PROPERTY OWNERSHIP table with columns for stationing and owner information (e.g., LL-07-001-F012, TAX MAP # 040-33A, 496 LF).



NOT TO SCALE  
PIPE SPECIFICATION



LEGEND and NOTES section. Legend includes symbols for PROPERTY LINE, FENCE, STREAM, EXISTING GAS PIPELINE, OVERHEAD UTILITY LINES, PROPOSED GAS PIPELINE, PROPOSED ACCESS ROAD, STORM SEWER, WATER LINE, SANITARY SEWER, EDGE OF GRAVEL, PROPOSED PERMANENT EASEMENT, PROPOSED GAS PIPELINE (NO GROUND SURVEY), EXTRA WORK SPACE, AREA OF NO DISTURBANCE, WETLAND, UTILITY POLE, EXISTING WELL, TOPSOIL SEGREGATION AREA, and PROPOSED TEMPORARY R.O.W.

REVISIONS table with columns for NO., DATE, DWG., CHKD., APPD., and DESCRIPTION.

7/18/16  
CONSTRUCTION ALIGNMENT STA 7166+00 TO 7222+00  
ATLANTIC COAST PIPELINE, LLC  
C/O DOMINION TRANSMISSION, INC.  
445 W. MAIN STREET, CLARKSBURG, WV 26301  
AUGUSTA COUNTY, VIRGINIA

SCALE: AS SHOWN  
DATE: 7/26/16  
DRAWN: CJF  
CHECKED: DLH  
APPROVED: NET

gai consultants logo and address: SOUTHPOINTE OFFICE, 6000 TOWN CENTER BLVD., SUITE 300 EAST, CANONSBURG, PA 15317, 724-873-3545

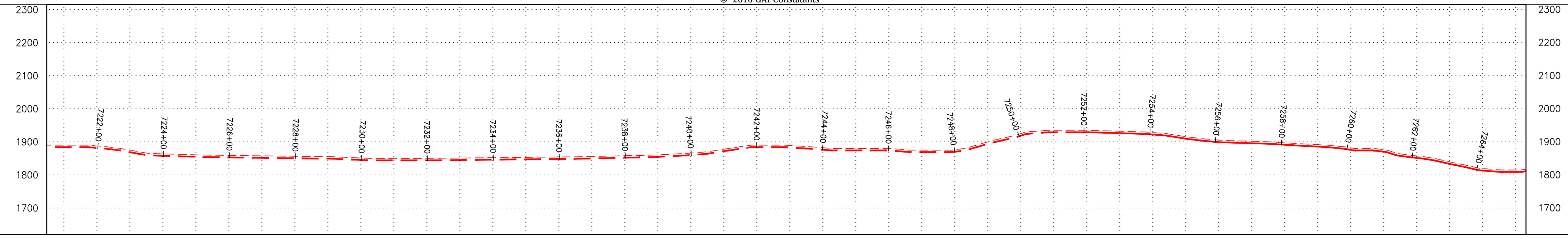
mbe monaloh basin engineers logo and address: 300 BUSINESS CENTER DRIVE, PITTSBURGH, PA 15205, 412-788-2433

PROJECT NO./DASH NO. 140468  
TASK NO. 005 SUB TASK NO. 00  
GROUP ID D DRAWING NO. E148  
148 OF 344

G:\CONSULTANTS\LOCAL\BUPROJ\ENERGY\2014\C140468.00 - DOMINION PIPE\CAD\MON FOREST ROUTE\DWG\ALIGNMENT SHEETS\C140468-00-000-00-E-E149-E153.DWG

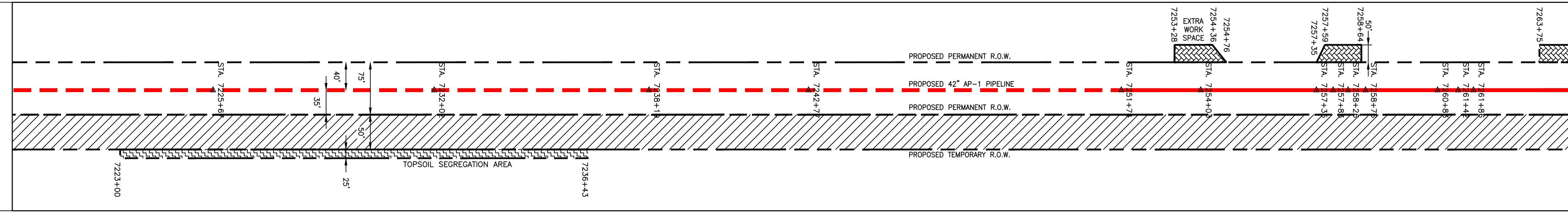
**NOTE:**  
STATIONING SHOWN ON THE DRAWING IS BASED ON SLOPE MEASUREMENTS.

**PROFILE VIEW**  
HORZ: 1" = 200'  
VERT: 1" = 200'



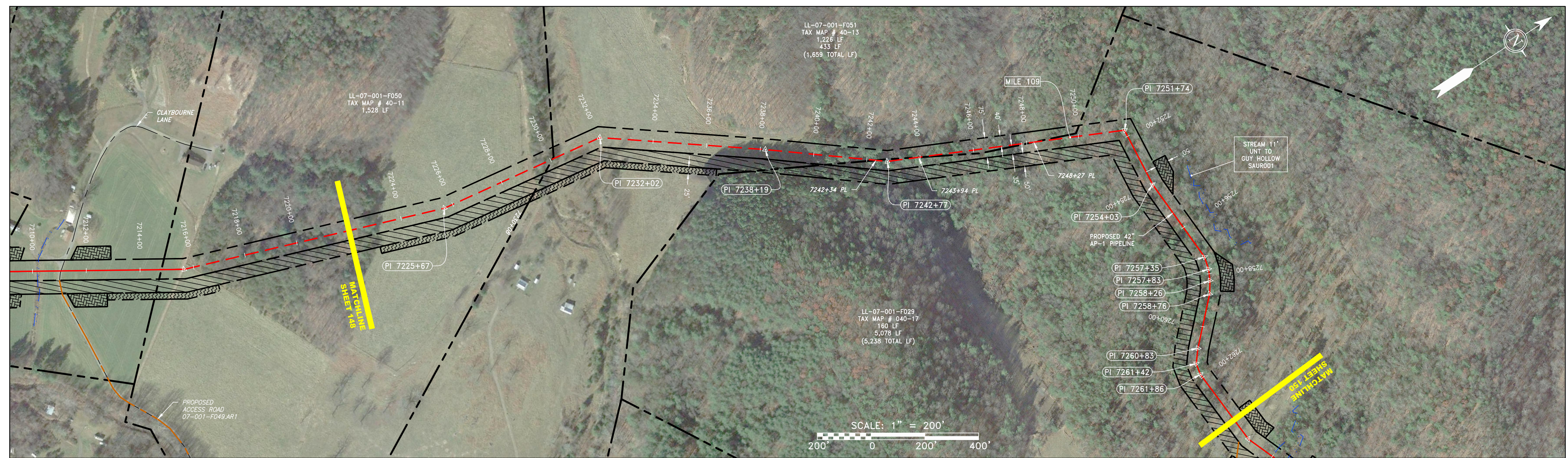
© 2016 GAI Consultants

**STATIONING & CONSTRUCTION LIMITS**



**PROPERTY OWNERSHIP**

LL-07-001-F050 TAX MAP # 40-11 1,528 LF	SIA 7230+08	LL-07-001-F051 TAX MAP # 40-13 1,226 LF	SIA 7242+34	LL-07-001-F029 TAX MAP # 40-17 160 LF	SIA 7243+94	LL-07-001-F051 TAX MAP # 40-13 433 LF	SIA 7248+27	LL-07-001-F029 TAX MAP # 040-17 5,078 LF	SIA 7262+05
---	-------------	---	-------------	---	-------------	---	-------------	--	-------------



REVISIONS			
NO.	DATE	BY	DESCRIPTION

7/18/16

**42" AP-1 PIPELINE**  
CONSTRUCTION ALIGNMENT STA 7222+00 TO 7264+00  
AUGUSTA COUNTY, VIRGINIA

**ATLANTIC COAST PIPELINE, LLC**  
C/O DOMINION TRANSMISSION, INC.  
445 W. MAIN STREET, CLARKSBURG, WV 26301

SCALE: AS SHOWN  
DATE: 7/26/16  
DRAWN: CJF  
CHECKED: DLH  
APPROVED: NET

**gai consultants**  
SOUTHPOINTE OFFICE  
6000 TOWN CENTER BLVD.  
SUITE 300 EAST  
CANONSBURG, PA 15317  
724-873-3545

**mbe monaloh basin engineers**  
300 BUSINESS CENTER DRIVE  
PITTSBURGH, PA 15205  
412-788-2433

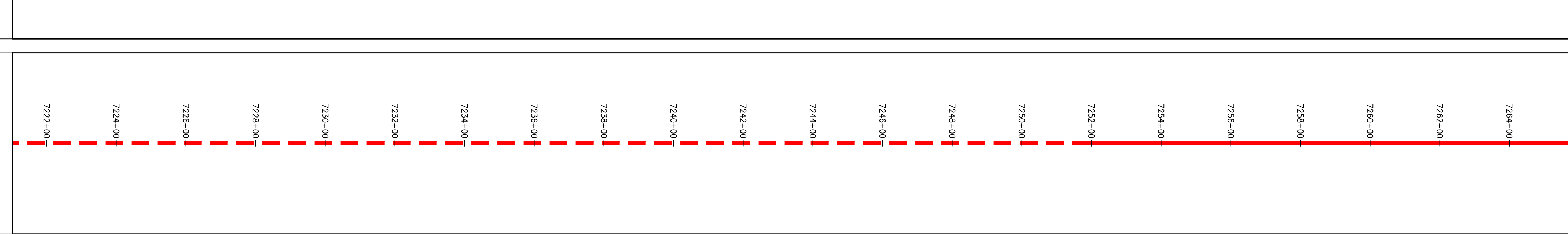
PROJECT NO./DASH NO.  
**140468**

TASK NO.	SUB TASK NO.
<b>005</b>	<b>00</b>

GROUP ID DRAWING NO.  
**D E149**

**149 OF 344**

**NOT TO SCALE**  
**PIPE SPECIFICATION**



**STRING VIEW BAND**

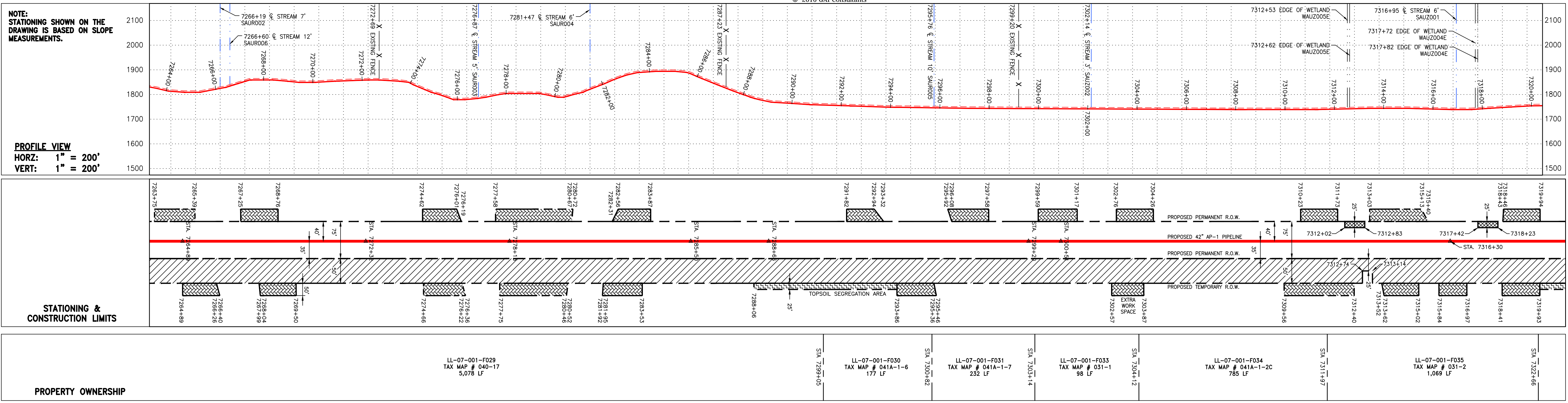
**LEGEND**

— X — X — X — X — X —	PROPERTY LINE
— · · · · ·	FENCE
— G — G — G — G — G —	STREAM
— G — G — G — G — G —	EXISTING GAS PIPELINE
— OH — OH — OH — OH — OH —	OVERHEAD UTILITY LINES
— — — — —	PROPOSED GAS PIPELINE

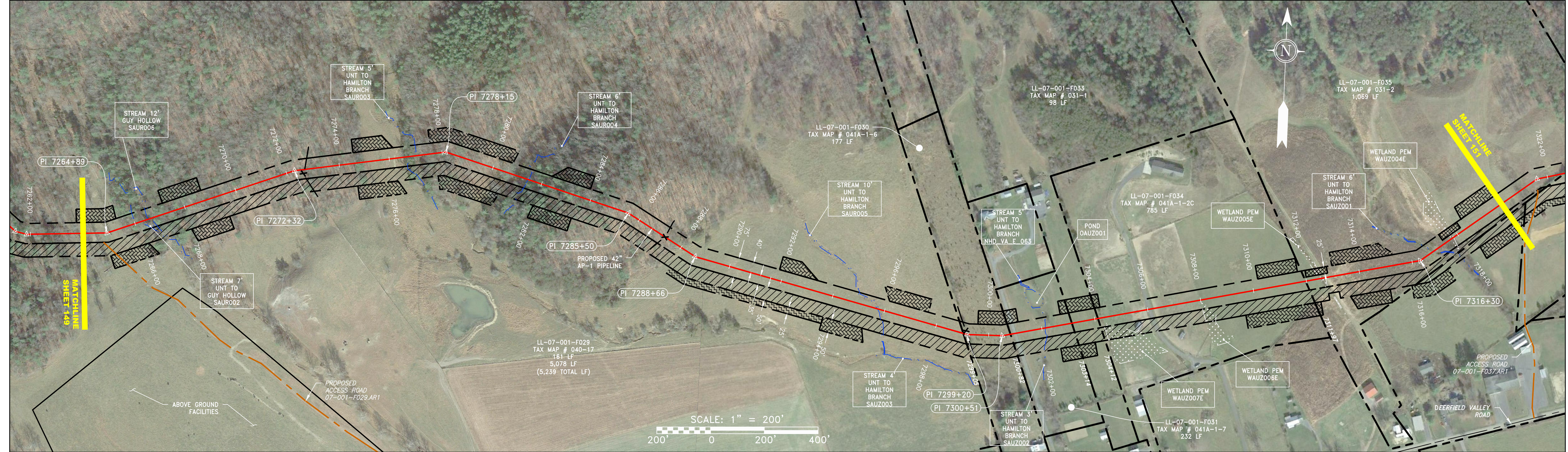
— — — — —	PROPOSED ACCESS ROAD		EXTRA WORK SPACE
— — — — —	STORM SEWER		TOPSOIL SEGREGATION AREA
— W — W — W — W — W —	WATER LINE		PROPOSED TEMPORARY R.O.W.
— SAN — SAN — SAN — SAN — SAN —	SANITARY SEWER		AREA OF NO DISTURBANCE
— — — — —	EDGE OF GRAVEL		WETLAND <small>(EXCERPTS SHOWN TO PROVIDE CLARITY ONLY)</small>
— — — — —	PROPOSED PERMANENT EASEMENT		UTILITY POLE
— — — — —	PROPOSED GAS PIPELINE (NO GROUND SURVEY)		EXISTING WELL

- NOTES:**
- COORDINATE SYSTEM USED FOR MAPPING AND TOPOGRAPHY - UTM WITH NAD83 DATUM, ZONE 17, US SURVEY **FOOT, CENTRAL MERIDIAN 81' W**
  - CONTOURS AND TOPOGRAPHIC FEATURES WERE DERIVED BY AN ON THE GROUND SURVEY PERFORMED BY MONALOH BASIN ENGINEERS, INC. ON 06-02-2014 THRU 06-26-2014 GPS SUB-METER ACCURACY.
  - AERIAL IMAGERY IS TAKEN FROM A SPRING 2015 FLIGHT BY KUCERA INTERNATIONAL INC.
  - THE PROPERTY LINES SHOWN ARE BASED ON GIS & TAX ASSESSMENT RECORDS (PROVIDED BY OTHERS). GAI & MONALOH BASIN ENGINEERS MAKE NO GUARANTEE EITHER EXPRESSED OR IMPLIED AS TO THE ACCURACY OF THE RECORDS AS SHOWN ON THESE DRAWINGS.
  - WETLAND DATA SHOWN ON THE DRAWINGS WAS PROVIDED BY NRG.
  - THESE DRAWINGS ARE NOT INTENDED TO PROVIDE EROSION AND SEDIMENTATION CONTROL REQUIREMENTS. SEE EROSION AND SEDIMENTATION CONTROL PLANS FOR COMPLETE REQUIREMENTS AND BMP LOCATIONS.
  - ALL STATIONING SHOWN IS SLOPE STATIONING.

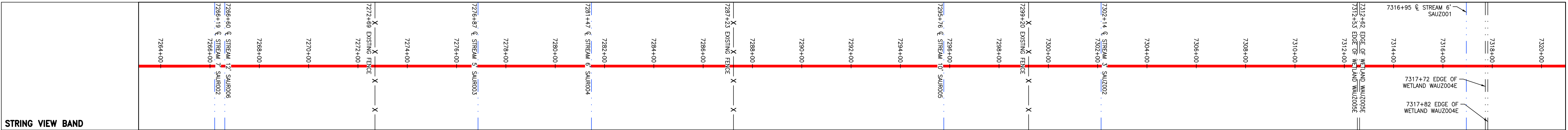




PROPERTY OWNERSHIP
LL-07-001-F029 TAX MAP # 040-17 5,078 LF
LL-07-001-F030 TAX MAP # 041A-1-6 177 LF
LL-07-001-F031 TAX MAP # 041A-1-7 232 LF
LL-07-001-F033 TAX MAP # 051-1 98 LF
LL-07-001-F034 TAX MAP # 041A-1-2C 785 LF
LL-07-001-F035 TAX MAP # 051-2 1,069 LF



NOT TO SCALE  
PIPE SPECIFICATION



LEGEND	PROPERTY LINE	PROPOSED ACCESS ROAD	STORM SEWER	WATER LINE	EXTRA WORK SPACE	TOPSOIL SEGREGATION AREA
-X-X-X-X-X-	FENCE	-W-W-W-	SAN	SAN	[Hatched Box]	TOPSOIL SEGREGATION AREA
-G-G-G-G-	EXISTING GAS PIPELINE	-SAN-SAN-	SANITARY SEWER	SAN	[Cross-hatched Box]	AREA OF NO DISTURBANCE
-OH-OH-OH-	OVERHEAD UTILITY LINES	-SAN-SAN-	EDGE OF GRAVEL	SAN	[Dotted Box]	WETLAND (EXTRA WORK SPACE TO PROVIDE CLARITY ONLY)
-OH-OH-OH-	PROPOSED GAS PIPELINE	-SAN-SAN-	PROPOSED PERMANENT EASEMENT	SAN	[Green Box]	UTILITY POLE
		-SAN-SAN-	PROPOSED PERMANENT EASEMENT	SAN	[Green Box]	EXISTING WELL
		-SAN-SAN-	PROPOSED PERMANENT EASEMENT	SAN	[Green Box]	EXISTING WELL
		-SAN-SAN-	PROPOSED PERMANENT EASEMENT	SAN	[Green Box]	EXISTING WELL
		-SAN-SAN-	PROPOSED PERMANENT EASEMENT	SAN	[Green Box]	EXISTING WELL
		-SAN-SAN-	PROPOSED PERMANENT EASEMENT	SAN	[Green Box]	EXISTING WELL
		-SAN-SAN-	PROPOSED PERMANENT EASEMENT	SAN	[Green Box]	EXISTING WELL

- NOTES:**
- COORDINATE SYSTEM USED FOR MAPPING AND TOPOGRAPHY - UTM WITH NAD83 DATUM, ZONE 17, US SURVEY FOOT, CENTRAL MERIDIAN 81° W
  - CONTOURS AND TOPOGRAPHIC FEATURES WERE DERIVED BY AN ON THE GROUND SURVEY PERFORMED BY MONALOH BASIN ENGINEERS, INC. ON 06-02-2014 THRU 06-26-2014 GPS SUB-METER ACCURACY.
  - AERIAL IMAGERY IS TAKEN FROM A SPRING 2015 FLIGHT BY KUCERA INTERNATIONAL INC.
  - THE PROPERTY LINES SHOWN ARE BASED ON GIS & TAX ASSESSMENT RECORDS (PROVIDED BY OTHERS). GAI & MONALOH BASIN ENGINEERS MAKE NO GUARANTEE EITHER EXPRESSED OR IMPLIED AS TO THE ACCURACY OF THE RECORDS AS SHOWN ON THESE DRAWINGS.
  - WETLAND DATA SHOWN ON THE DRAWINGS WAS PROVIDED BY NRG.
  - THESE DRAWINGS ARE NOT INTENDED TO PROVIDE EROSION AND SEDIMENTATION CONTROL REQUIREMENTS. SEE EROSION AND SEDIMENTATION CONTROL PLANS FOR COMPLETE REQUIREMENTS AND BMP LOCATIONS.
  - ALL STATIONING SHOWN IS SLOPE STATIONING.

NO.	DATE	BY	CHKD.	APPD.	DESCRIPTION

**7/18/16**

**42" AP-1 PIPELINE  
CONSTRUCTION ALIGNMENT STA 7264+00 TO 7320+00**

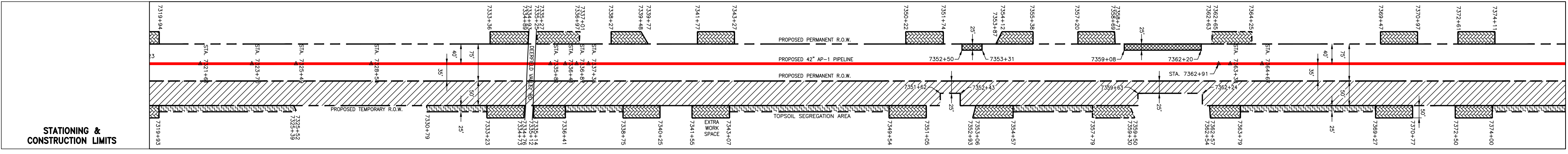
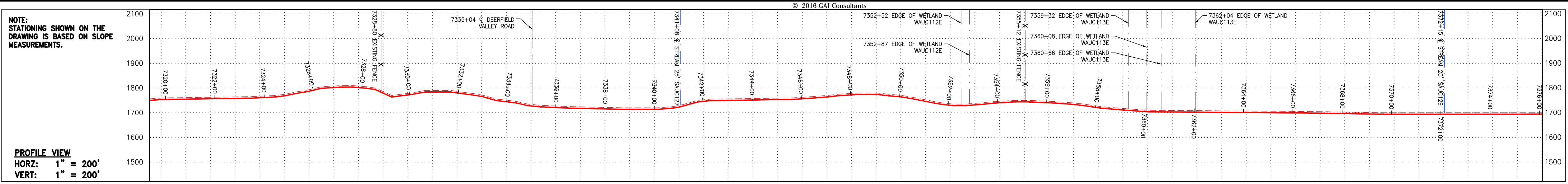
ATLANTIC COAST PIPELINE, LLC  
C/O DOMINION TRANSMISSION, INC.  
445 W. MAIN STREET, CLARKSBURG, WV 26301  
AUGUSTA COUNTY, VIRGINIA

SCALE: AS SHOWN  
DATE: 7/26/16  
DRAWN: CJF  
CHECKED: DLH  
APPROVED: NET

**gai consultants**  
SOUTHPOINTE OFFICE  
6000 TOWN CENTER BLVD.  
SUITE 300 EAST  
CANONSBURG, PA 15317  
724-873-3545

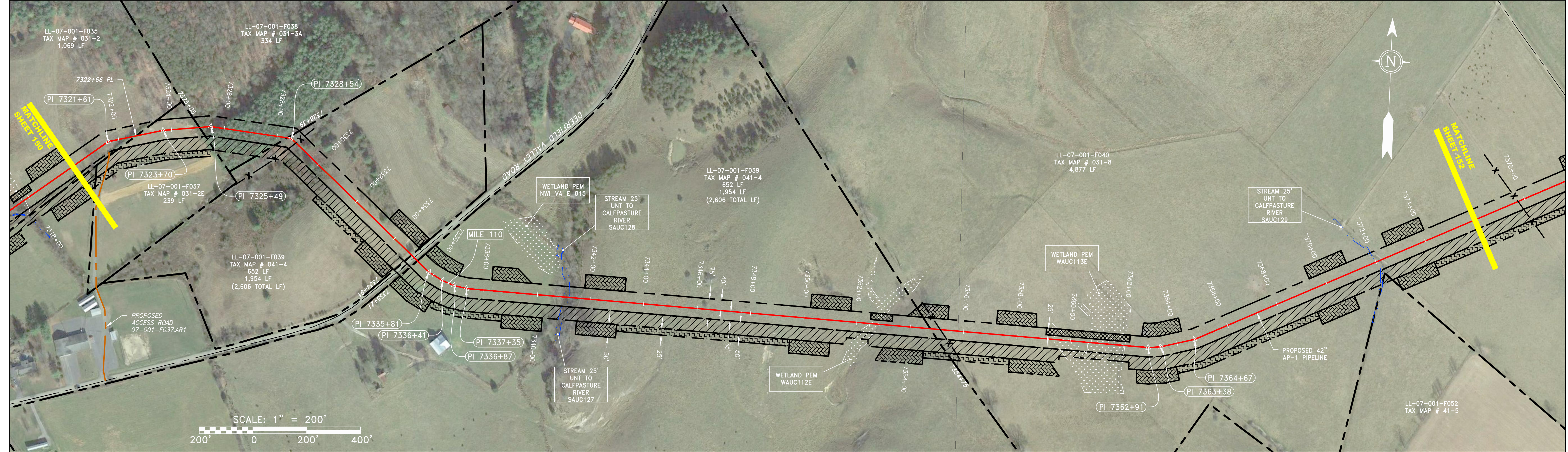
**mbe monaloh basin engineers**  
300 BUSINESS CENTER DRIVE  
PITTSBURGH, PA 15205  
412-788-2433

PROJECT NO./DASH NO.	<b>140468</b>	
TASK NO.	005	SUB TASK NO. 00
GROUP ID	D	DRAWING NO. E150
150	OF	344

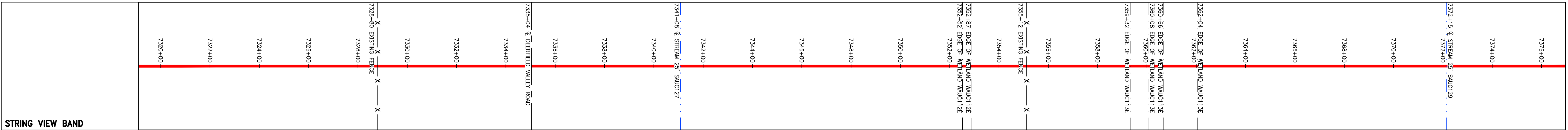


**PROPERTY OWNERSHIP**

LL-07-001-F035 TAX MAP # 031-2 1,069 LF	SIA 7322+66	LL-07-001-F037 TAX MAP # 031-2E 239 LF	SIA 7325+05	LL-07-001-F038 TAX MAP # 031-3A 334 LF	SIA 7328+38	LL-07-001-F039 TAX MAP # 041-4 652 LF	SIA 7334+91	LL-07-001-F039 TAX MAP # 041-4 1,954 LF	SIA 7354+75	LL-07-001-F040 TAX MAP # 031-8 4,877 LF	SIA 7362+52
---	-------------	--	-------------	--	-------------	---	-------------	---	-------------	---	-------------



**NOT TO SCALE  
PIPE SPECIFICATION**



**LEGEND**

	PROPERTY LINE		PROPOSED ACCESS ROAD		EXTRA WORK SPACE		TOPSOIL SEGREGATION AREA
	FENCE		STORM SEWER		AREA OF NO DISTURBANCE		PROPOSED TEMPORARY R.O.W.
	STREAM		WATER LINE		WETLAND		UTILITY POLE
	EXISTING GAS PIPELINE		SANITARY SEWER		WETLAND		EXISTING WELL
	OVERHEAD UTILITY LINES		EDGE OF GRAVEL		WETLAND		
	PROPOSED GAS PIPELINE		PROPOSED PERMANENT EASEMENT		WETLAND		
			PROPOSED GAS PIPELINE (NO GROUND SURVEY)		WETLAND		

**NOTES:**

- COORDINATE SYSTEM USED FOR MAPPING AND TOPOGRAPHY - UTM WITH NAD83 DATUM, ZONE 17, US SURVEY FOOT, CENTRAL MERIDIAN 81° W
- CONTOURS AND TOPOGRAPHIC FEATURES WERE DERIVED BY AN ON THE GROUND SURVEY PERFORMED BY MONALOH BASIN ENGINEERS, INC. ON 06-02-2014 THRU 06-26-2014 GPS SUB-METER ACCURACY.
- AERIAL IMAGERY IS TAKEN FROM A SPRING 2015 FLIGHT BY KUCERA INTERNATIONAL INC.
- THE PROPERTY LINES SHOWN ARE BASED ON GIS & TAX ASSESSMENT RECORDS (PROVIDED BY OTHERS). GAI & MONALOH BASIN ENGINEERS MAKE NO GUARANTEE EITHER EXPRESSED OR IMPLIED AS TO THE ACCURACY OF THE RECORDS AS SHOWN ON THESE DRAWINGS.
- WETLAND DATA SHOWN ON THE DRAWINGS WAS PROVIDED BY NRG.
- THESE DRAWINGS ARE NOT INTENDED TO PROVIDE EROSION AND SEDIMENTATION CONTROL REQUIREMENTS. SEE EROSION AND SEDIMENTATION CONTROL PLANS FOR COMPLETE REQUIREMENTS AND BMP LOCATIONS.
- ALL STATIONING SHOWN IS SLOPE STATIONING.

DESCRIPTION		REVISIONS	
NO.	DATE	BY	APPD.

**7/18/16**

SCALE: AS SHOWN  
DATE: 7/26/16  
DRAWN: CJF  
CHECKED: DLH  
APPROVED: NET

**gai consultants**  
SOUTHPOINTE OFFICE  
6000 TOWN CENTER BLVD.  
SUITE 300 EAST  
CANONSBURG, PA 15317  
724-873-3545

**mbe monaloh basin engineers**  
300 BUSINESS CENTER DRIVE  
PITTSBURGH, PA 15205  
412-788-2433

PROJECT NO./DASH NO.  
**140468**

TASK NO.	SUB TASK NO.
<b>005</b>	<b>00</b>

GROUP ID **D** DRAWING NO. **E151**

**151 OF 344**

7/26/2016 11:05 AM