

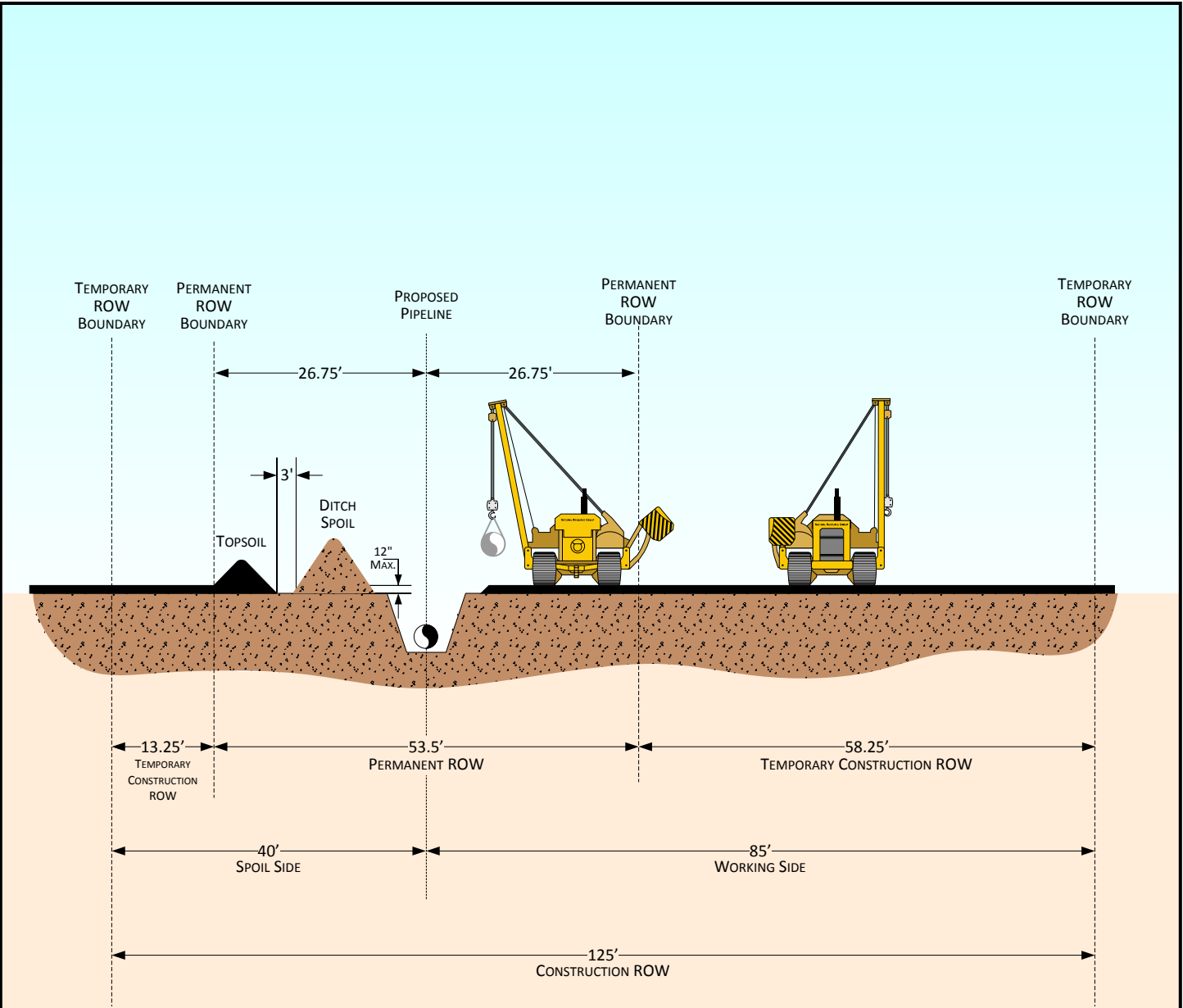
**ATLANTIC COAST PIPELINE, LLC
ATLANTIC COAST PIPELINE**

Construction, Operations, and Maintenance Plans

ATTACHMENT A

Right-of-Way Configurations

Previously filed with FERC on August 24, 2016 (Accession No. 20160824-5160)



PROFILE

NOTES:

- 1. CONSTRUCTION RIGHT-OF-WAY WILL TYPICALLY BE 125' WIDE CONSISTING OF 53.5' OF PERMANENT RIGHT-OF-WAY AND 71.5' OF TEMPORARY CONSTRUCTION RIGHT-OF-WAY. ADDITIONAL TEMPORARY WORKSPACE WILL BE NECESSARY AT MAJOR ROAD, RAIL, RIVER CROSSINGS, SIDESLOPES, WHERE FULL RIGHT-OF-WAY TOPSOIL STRIPPING IS CONDUCTED, AND OTHER SPECIAL CIRCUMSTANCES AS REQUIRED.

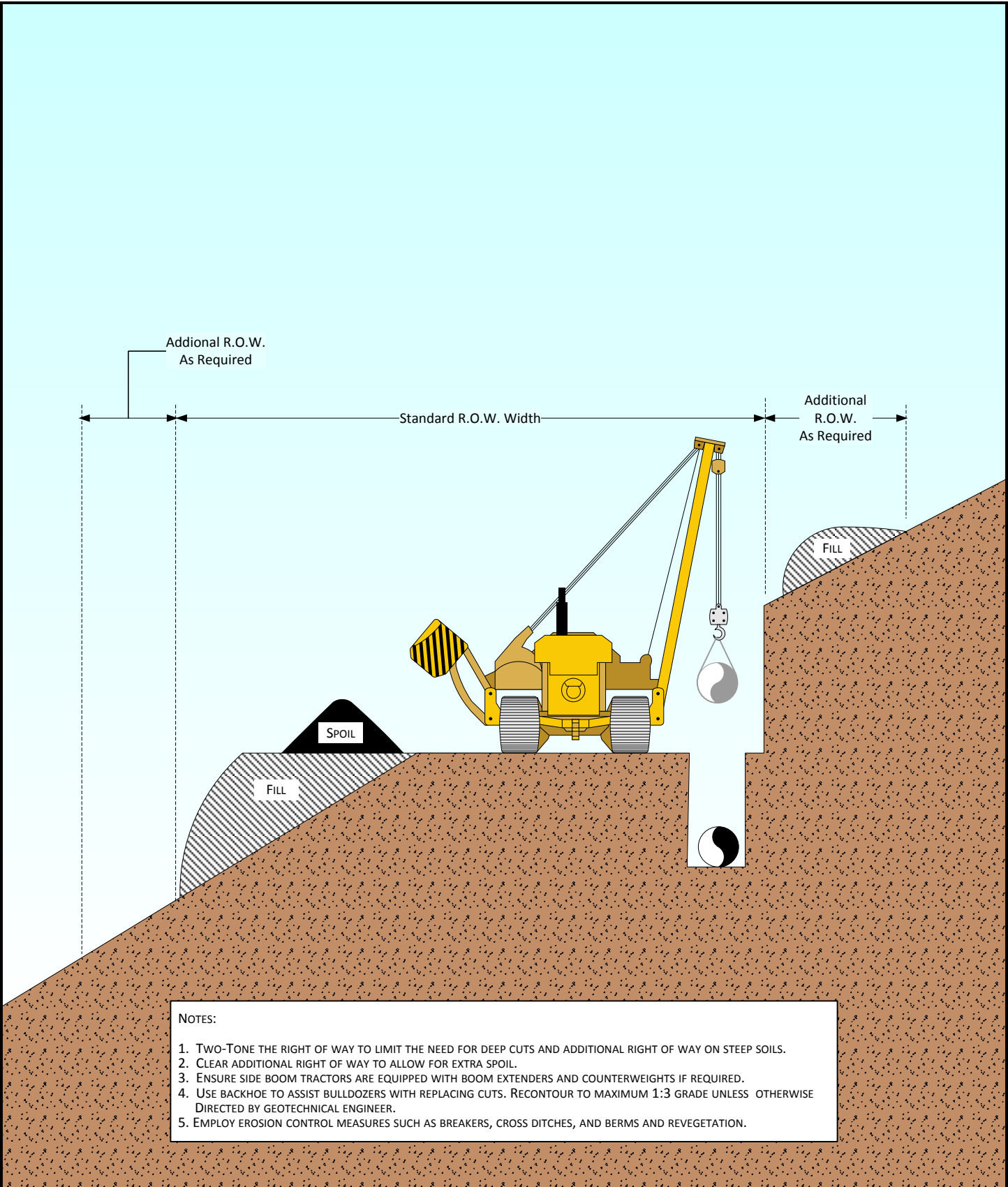
For environmental review purposes only.



**Atlantic Coast Pipeline
AP-1 (Federal Lands Only)
Typical Construction Right-of-Way
Non-Agricultural Areas**



an ERM Group company



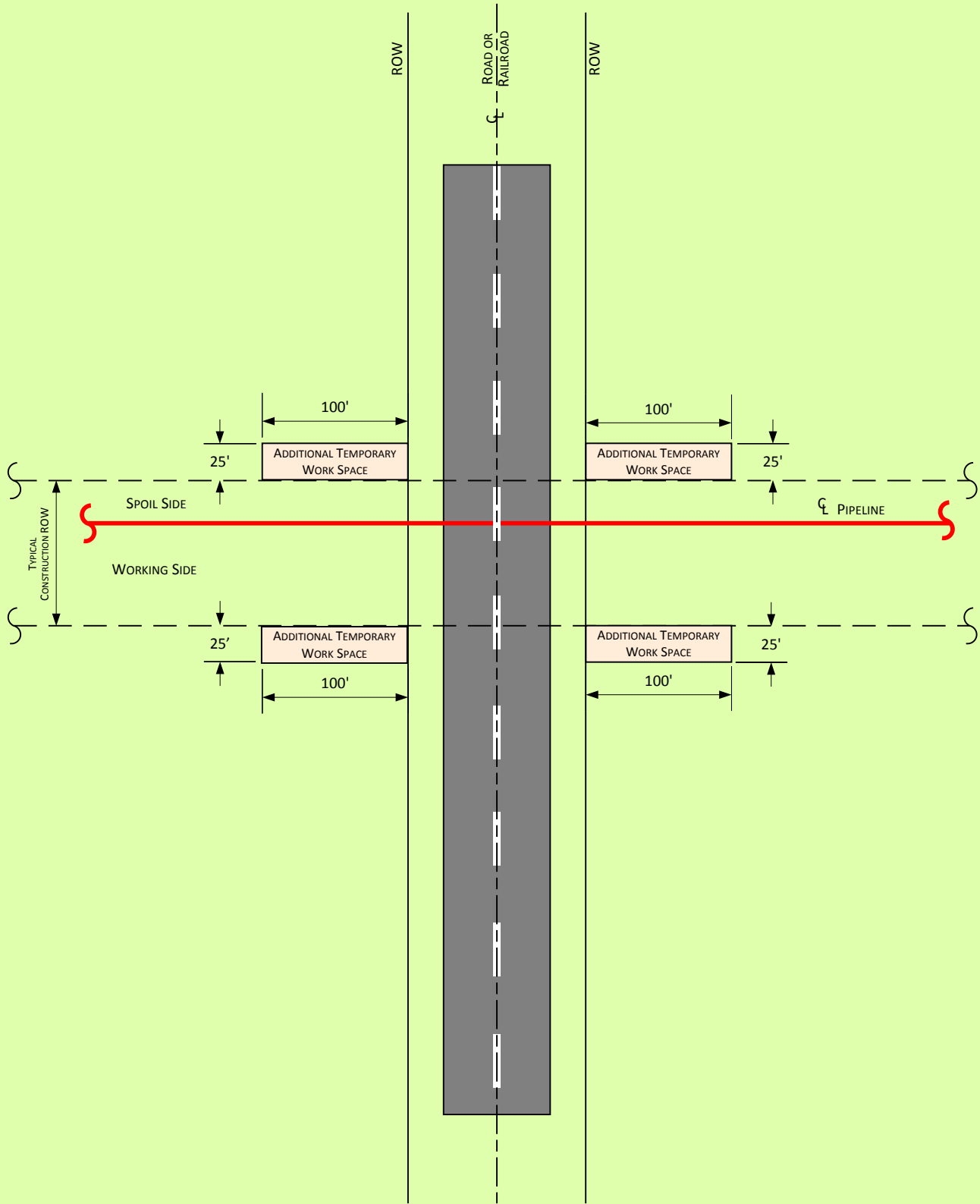
- NOTES:
1. TWO-TONE THE RIGHT OF WAY TO LIMIT THE NEED FOR DEEP CUTS AND ADDITIONAL RIGHT OF WAY ON STEEP SOILS.
 2. CLEAR ADDITIONAL RIGHT OF WAY TO ALLOW FOR EXTRA SPOIL.
 3. ENSURE SIDE BOOM TRACTORS ARE EQUIPPED WITH BOOM EXTENDERS AND COUNTERWEIGHTS IF REQUIRED.
 4. USE BACKHOE TO ASSIST BULLDOZERS WITH REPLACING CUTS. RECONTOUR TO MAXIMUM 1:3 GRADE UNLESS OTHERWISE DIRECTED BY GEOTECHNICAL ENGINEER.
 5. EMPLOY EROSION CONTROL MEASURES SUCH AS BREAKERS, CROSS DITCHES, AND BERMS AND REVEGETATION.



**Atlantic Coast Pipeline and Supply Header Projects
Cut and Fill Construction**



an ERM Group company



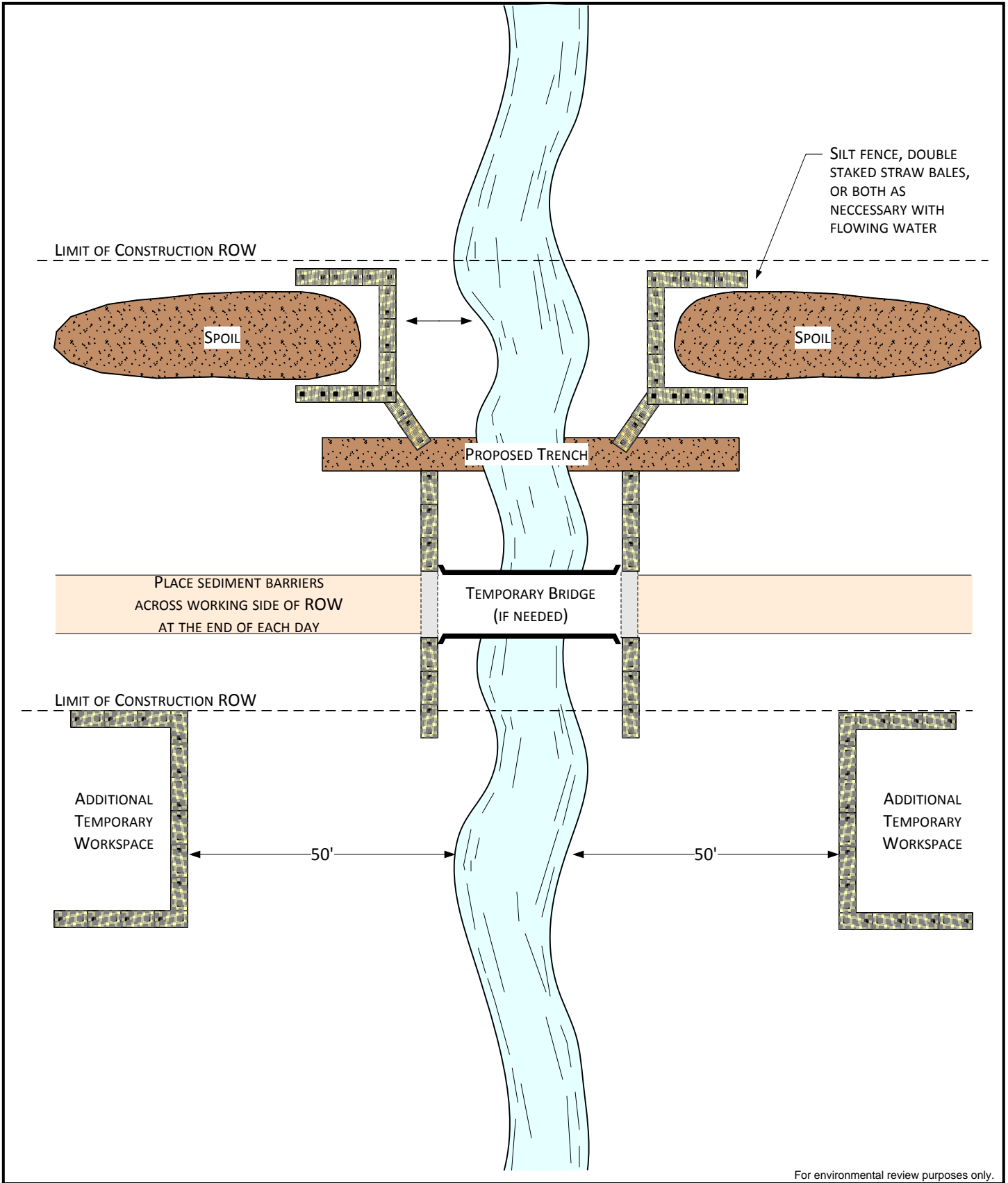
For environmental review purposes only.



Atlantic Coast Pipeline
AP-1 (42" Outside Diameter)
 Typical Additional Temporary Workspace at Single-Lane Roads
 Typical Additional Workspace at all Bored Roads



an ERM Group company



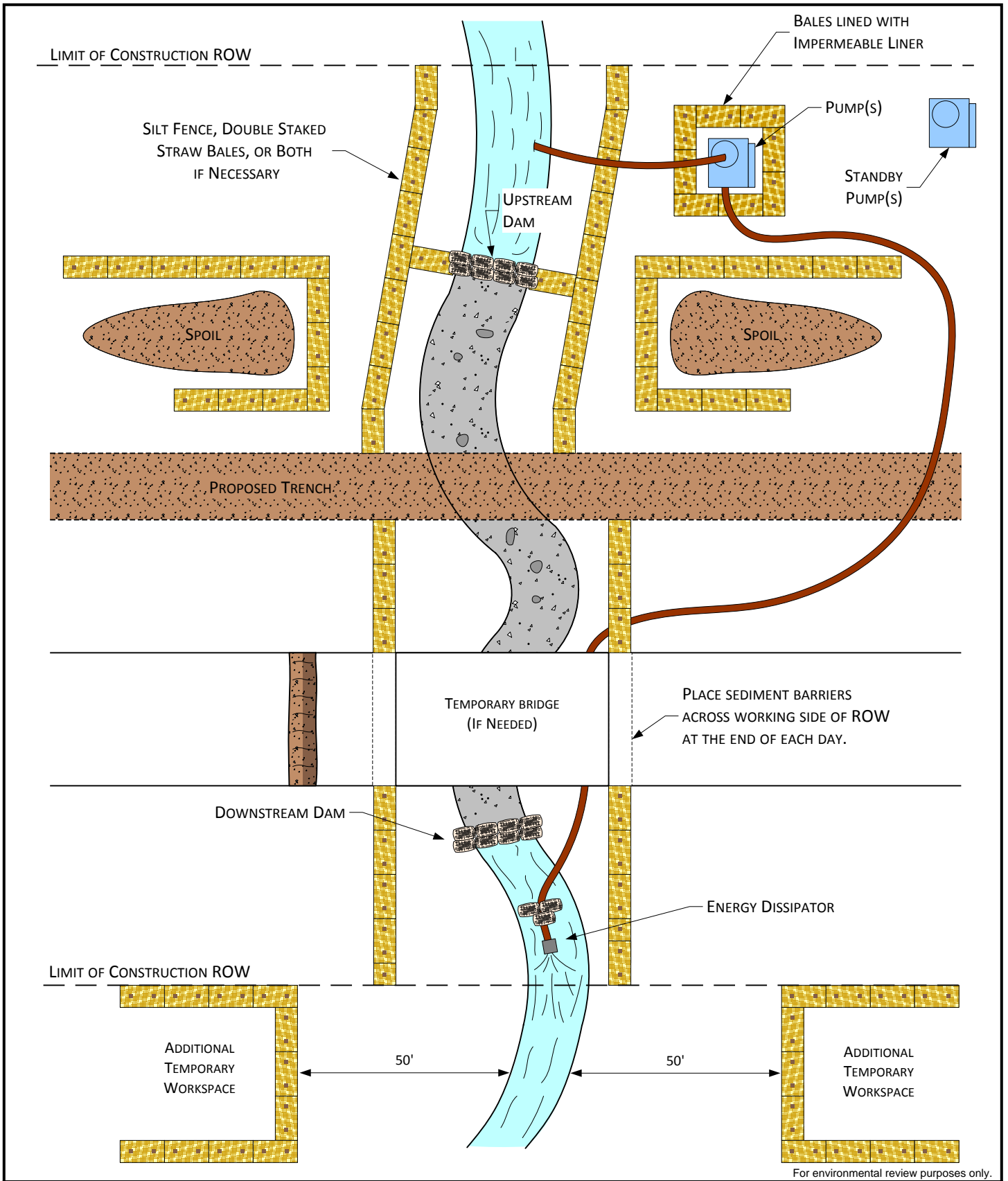
For environmental review purposes only.



Atlantic Coast Pipeline
AP-1 (42" Outside Diameter)
 Typical Waterbody Crossing
 Open Cut Method



an ERM Group company



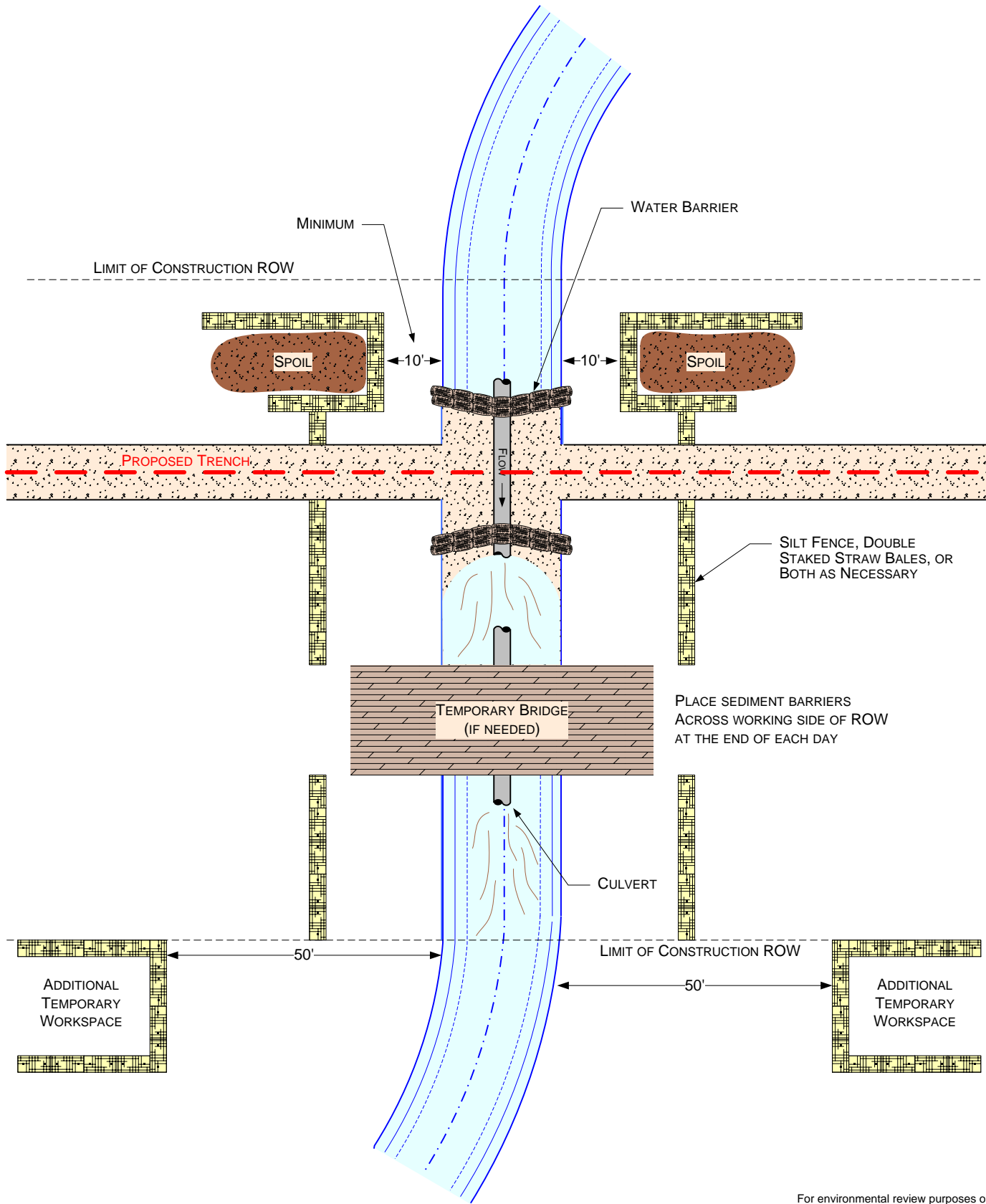
For environmental review purposes only.



**Atlantic Coast Pipeline
AP-1 (42" Outside Diameter)**
Typical Waterbody Crossing
Dam and Pump Method



an ERM Group company



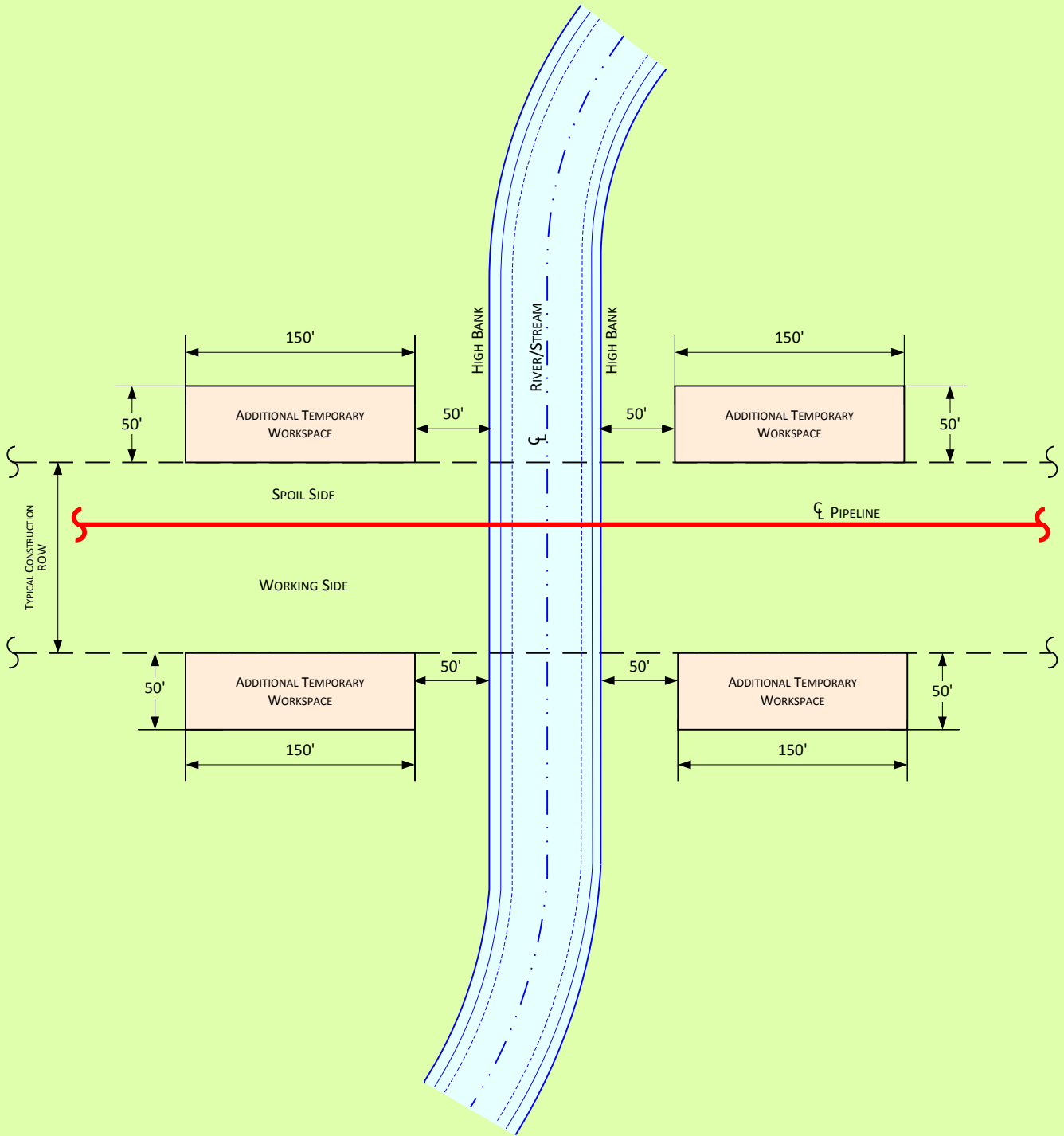
For environmental review purposes only.



Atlantic Coast Pipeline
AP-1 (42" Outside Diameter)
 Typical Waterbody Crossing
 Flume Method



an ERM Group company



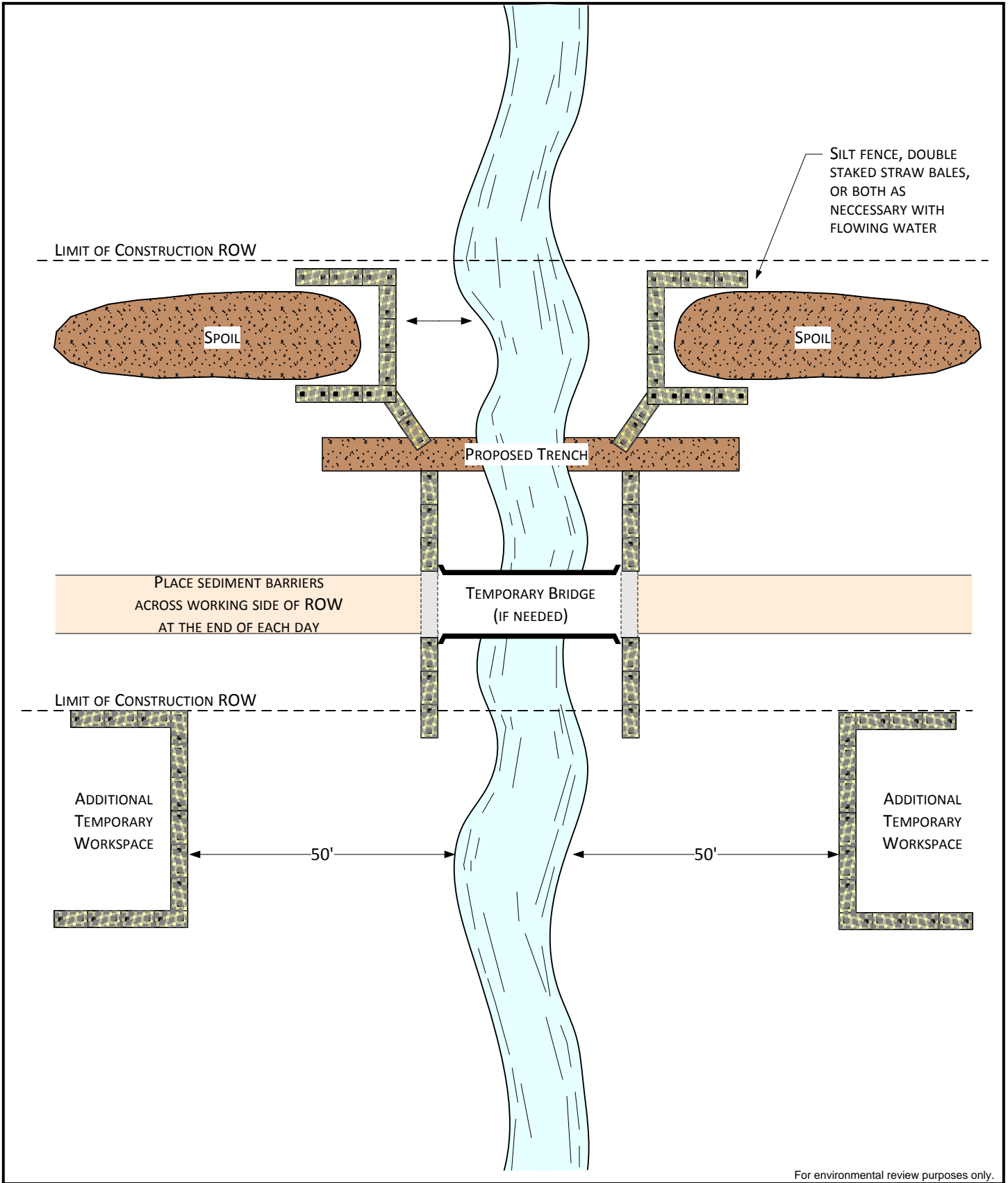
For environmental review purposes only.



Atlantic Coast Pipeline
AP-1 (42" Outside Diameter)
 Typical Additional Temporary Workspace at
 Waterbody Crossings Greater Than 10 Feet Wide



an ERM Group company



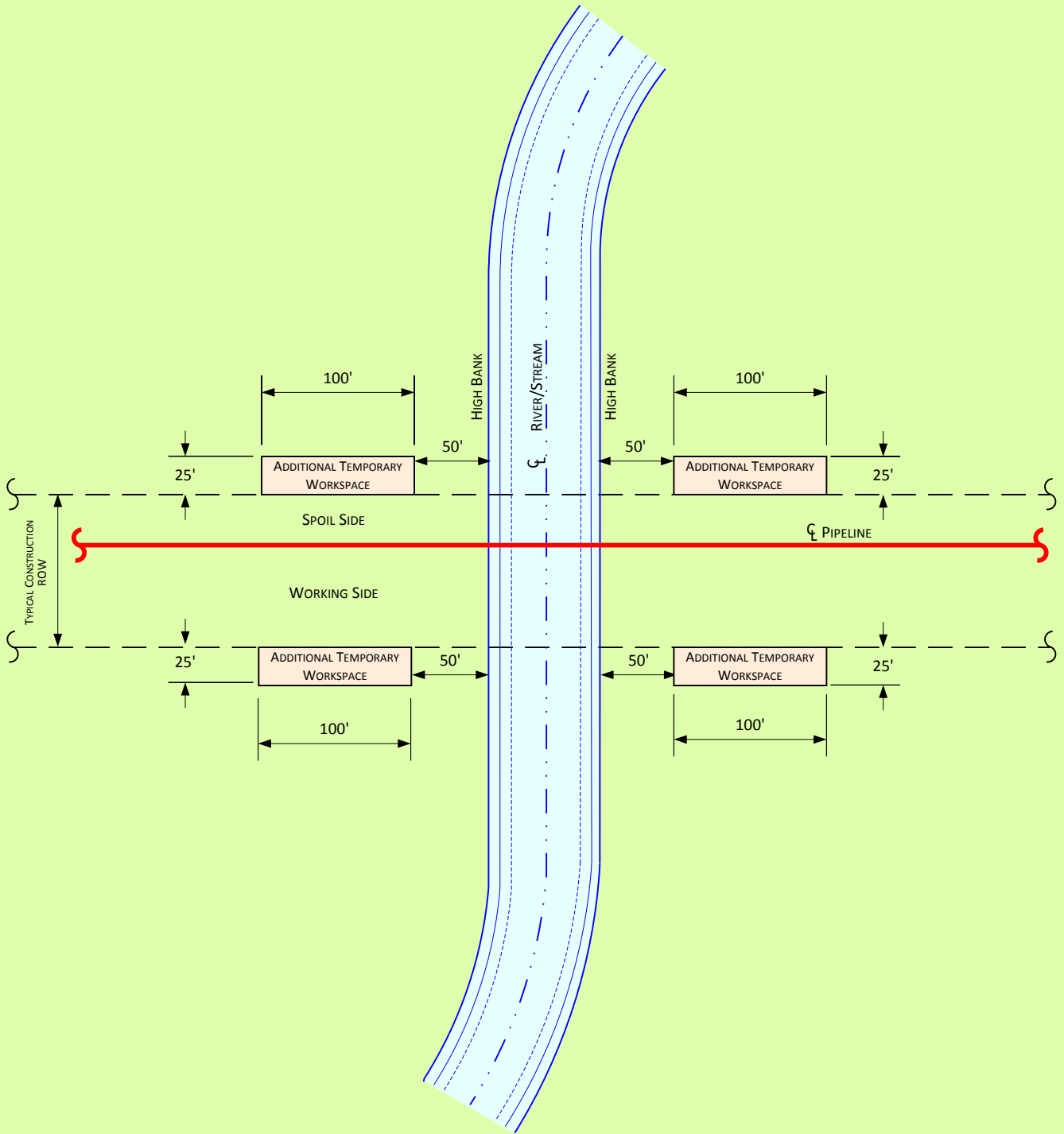
For environmental review purposes only.



Atlantic Coast Pipeline
AP-1 (42" Outside Diameter)
 Typical Waterbody Crossing
 Open Cut Method



an ERM Group company



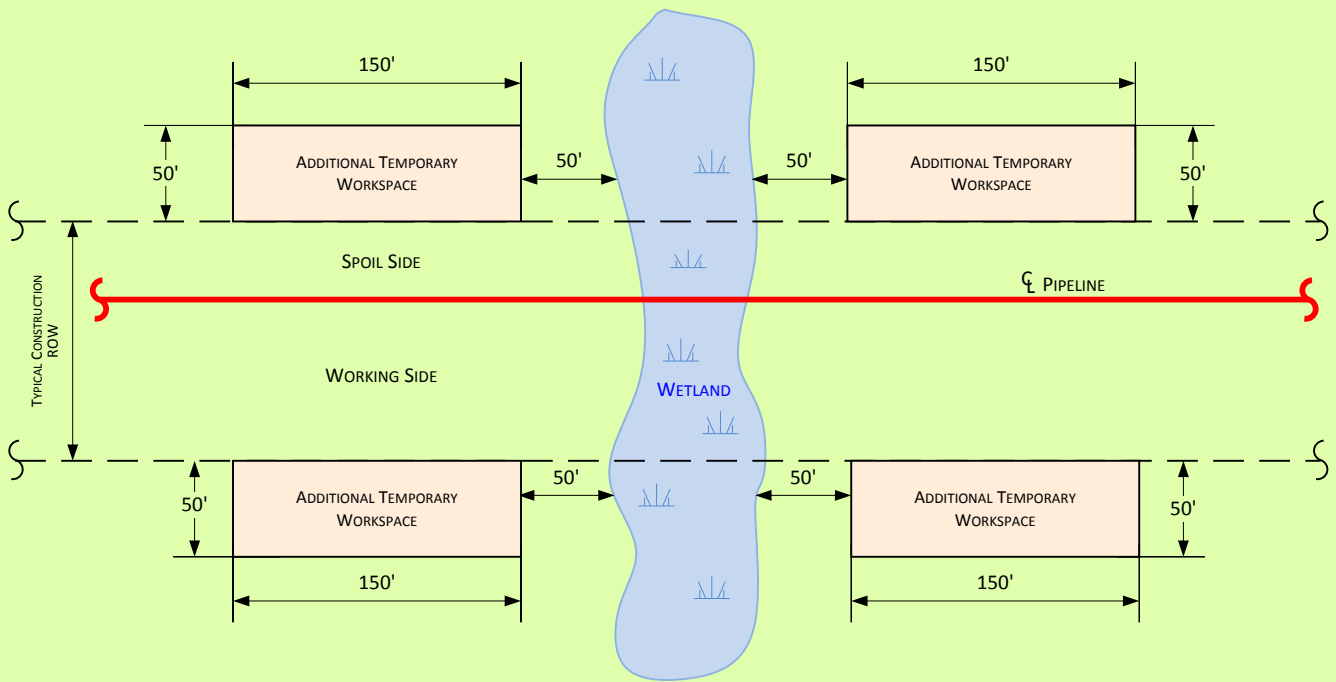
For environmental review purposes only.



Atlantic Coast Pipeline
AP-1 (42" Outside Diameter)
 Typical Additional Workspace at Waterbodies Less Than 10 Feet Wide
 Typical Additional Workspace at All Waterbodies



an ERM Group company



For environmental review purposes only.



Atlantic Coast Pipeline
AP-1 (42" Outside Diameter)
 Typical Additional Temporary Workspace at
 Wetland Crossings



an ERM Group company