

NOTES:

- COORDINATE SYSTEM USED FOR MAPPING AND TOPOGRAPHY - UTM WITH NAD83 DATUM, ZONE 17, US SURVEY FOOT, CENTRAL MERIDIAN 81° W.
- CONTOURS AND TOPOGRAPHIC FEATURES WERE DERIVED FROM LIDAR DATA AND GPS SUB-METER GROUND SURVEY PERFORMED BY GAI CONSULTANTS, INC FROM 10-13-2014 TO 04-07-2015.
- AERIAL IMAGERY IS TAKEN FROM A SPRING 2015 FLIGHT BY KUCERA INTERNATIONAL INC..
- THE PROPERTY LINES SHOWN ARE BASED ON GIS & TAX ASSESSMENT RECORDS (PROVIDED BY OTHERS). GAI CONSULTANTS MAKE NO GUARANTEE EITHER EXPRESSED OR IMPLIED AS TO THE ACCURACY OF THE RECORDS AS SHOWN ON THESE DRAWINGS.
- STREAM AND WETLAND DATA SHOWN ON THE DRAWINGS WAS PROVIDED BY ERM.
- ALL STATIONING SHOWN IS SLOPE STATIONING.
- ERM AND JAMES HEMME, WV P.E. NO. 12195 (HEREAFTER COLLECTIVELY REFERRED TO AS ERM) HAVE DEPICTED EROSION AND SEDIMENTATION CONTROL (E&SC) BEST MANAGEMENT PRACTICES (BMPs) ON THESE ALIGNMENT PLAN SHEETS PREPARED BY GAI CONSULTANTS, INC. FOR USE BY CONTRACTOR TO CONTROL EROSION AND SEDIMENTATION DURING CONSTRUCTION OF THIS PROJECT. ERM IS SOLELY RESPONSIBLE FOR THE NATURE AND LOCATION OF THE DEPICTED BMPs AS OF THE DATE SIGNED AND SEALED BASED ON THE SOURCE DATA PROVIDED AND AS DESCRIBED IN THE GENERAL NOTES SECTION OF THIS PLAN SET. NO RESPONSIBILITY IS ASSUMED FOR INACCURACIES OF SOURCE DATA PROVIDED BY OTHERS. ERM RETAINS NO RESPONSIBILITY OF LIABILITY FOR INFORMATION DEVELOPED, PREPARED OR OTHERWISE PROVIDED BY OTHER, OR FOR INACCURACIES OF SOURCE DATA PROVIDED BY OTHER. ERM ASSUMES NO RESPONSIBILITY OR LIABILITY FOR DESIGNS OR WORK PRODUCTS OF ANY TYPE TO THE EXTENT THAT THEY ARE BASED UPON OR DERIVED FROM SUCH INCORRECT INFORMATION OR DATA.



Dominion

Dominion Transmission, Inc.
925 WHITE OAKS BLVD.
BRIDGEPORT, WV 26330

LEGEND

- PROPOSED GAS PIPELINE
 - - - PROPOSED GAS PIPELINE (NO GROUND SURVEY)
 - G — EXISTING GAS PIPELINE
 - - - PROPOSED PERMANENT EASEMENT
 - PROPOSED ACCESS ROAD
 - - - PROPERTY LINE
 - X — X — X FENCE
 - - - EDGE OF GRAVEL
 - - - EDGE OF PAVEMENT
 - - - CULVERT
 - OHE — OVERHEAD UTILITY LINES
 - STREAM
 - - - DITCH
 - ROAD
 - - - COUNTY LINE
 - - - USGS QUADRANGLE BOUNDARY
- EXTRA WORK SPACE
 - WETLAND
 - PROPOSED TEMPORARY R.O.W.
 - TOP SOIL SEGREGATION
 - UTILITY POLE
 - WELL
 - TANK
 - GAS MARKER
 - TEST STATION

ONE CALL INFO



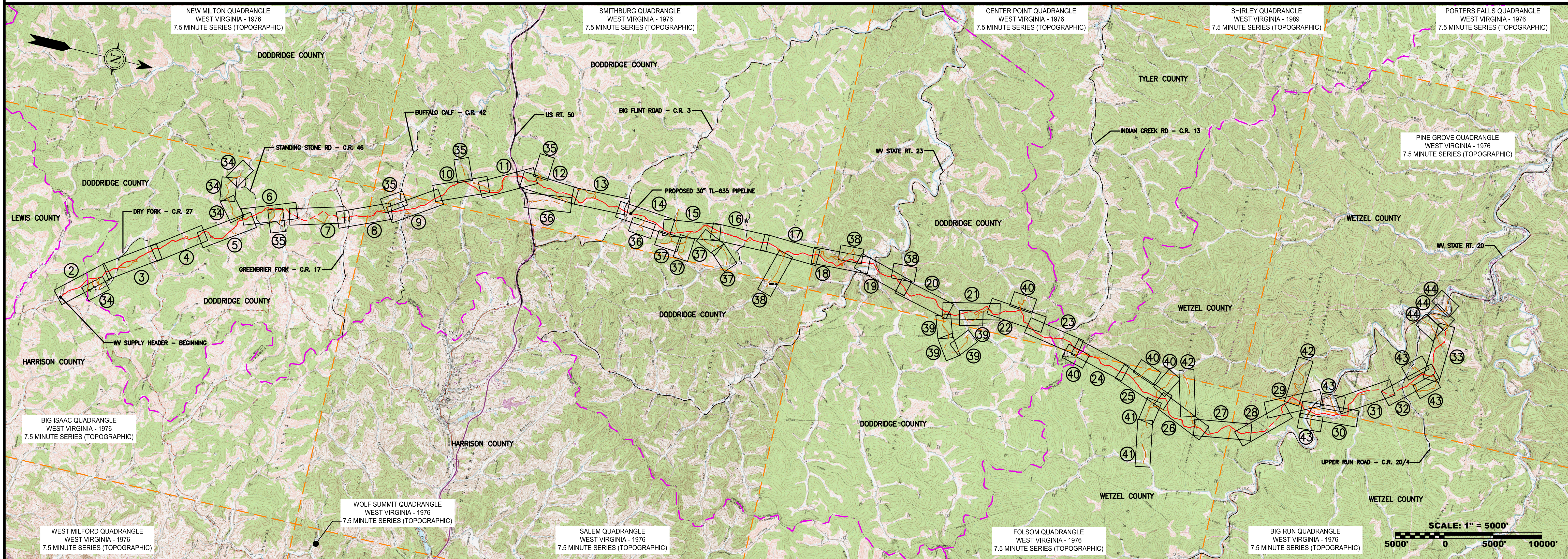
SUPPLY HEADER (WEST VIRGINIA) DRAWING INDEX		
SHEET NO.	REV.	SHEET TITLE
1		COVER SHEET
2		CONSTRUCTION ALIGNMENT (STA 0+00 TO 58+00)
2A		ENLARGED DETAIL (0+00 TO 26+35)
3		CONSTRUCTION ALIGNMENT (STA 58+00 TO 116+00)
4		CONSTRUCTION ALIGNMENT (STA 116+00 TO 174+00)
5		CONSTRUCTION ALIGNMENT (STA 174+00 TO 232+00)
6		CONSTRUCTION ALIGNMENT (STA 232+00 TO 288+00)
7		CONSTRUCTION ALIGNMENT (STA 288+00 TO 344+00)
8		CONSTRUCTION ALIGNMENT (STA 344+00 TO 400+00)
9		CONSTRUCTION ALIGNMENT (STA 400+00 TO 456+00)
10		CONSTRUCTION ALIGNMENT (STA 456+00 TO 512+00)
11		CONSTRUCTION ALIGNMENT (STA 512+00 TO 568+00)

SUPPLY HEADER (WEST VIRGINIA) DRAWING INDEX		
SHEET NO.	REV.	SHEET TITLE
12		CONSTRUCTION ALIGNMENT (STA 568+00 TO 624+00)
13		CONSTRUCTION ALIGNMENT (STA 624+00 TO 680+00)
14		CONSTRUCTION ALIGNMENT (STA 680+00 TO 736+00)
15		CONSTRUCTION ALIGNMENT (STA 736+00 TO 792+00)
16		CONSTRUCTION ALIGNMENT (STA 792+00 TO 848+00)
17		CONSTRUCTION ALIGNMENT (STA 848+00 TO 904+00)
18		CONSTRUCTION ALIGNMENT (STA 904+00 TO 960+00)
19		CONSTRUCTION ALIGNMENT (STA 960+00 TO 1016+00)
20		CONSTRUCTION ALIGNMENT (STA 1016+00 TO 1072+00)
21		CONSTRUCTION ALIGNMENT (STA 1072+00 TO 1128+00)
22		CONSTRUCTION ALIGNMENT (STA 1128+00 TO 1184+00)

SUPPLY HEADER (WEST VIRGINIA) DRAWING INDEX		
SHEET NO.	REV.	SHEET TITLE
23		CONSTRUCTION ALIGNMENT (STA 1182+00 TO 1238+00)
24		CONSTRUCTION ALIGNMENT (STA 1238+00 TO 1294+00)
25		CONSTRUCTION ALIGNMENT (STA 1294+00 TO 1350+00)
26		CONSTRUCTION ALIGNMENT (STA 1350+00 TO 1406+00)
27		CONSTRUCTION ALIGNMENT (STA 1406+00 TO 1462+00)
28		CONSTRUCTION ALIGNMENT (STA 1462+00 TO 1518+00)
29		CONSTRUCTION ALIGNMENT (STA 1518+00 TO 1574+00)
30		CONSTRUCTION ALIGNMENT (STA 1574+00 TO 1630+00)
31		CONSTRUCTION ALIGNMENT (STA 1630+00 TO 1686+00)
32		CONSTRUCTION ALIGNMENT (STA 1686+00 TO 1742+00)
33		CONSTRUCTION ALIGNMENT (STA 1742+00 TO 1798+00)

SUPPLY HEADER (WEST VIRGINIA) DRAWING INDEX		
SHEET NO.	REV.	SHEET TITLE
34		ACCESS ROAD DETAILS
35		ACCESS ROAD DETAILS
36		ACCESS ROAD DETAILS
37		ACCESS ROAD DETAILS
38		ACCESS ROAD DETAILS
39		ACCESS ROAD DETAILS
40		ACCESS ROAD DETAILS
41		ACCESS ROAD DETAILS
42		ACCESS ROAD DETAILS
43		ACCESS ROAD DETAILS
44		ACCESS ROAD DETAILS

WV SUPPLY HEADER PROJECT - 30" TL-635 PIPELINE



WV SUPPLY HEADER PROJECT - 30" TL-635 PIPELINE COVER SHEET

HARRISON, DODDRIDGE, TYLER, & WETZEL COUNTIES, WEST VIRGINIA

DOMINION TRANSMISSION, INC.

925 WHITE OAKS BLVD.
BRIDGEPORT, WV 26330

SCALE: AS SHOWN

DATE: 06/09/17

DRAWN: FORTNCJ

CHECKED: HOOSIDL

APPROVED: TYSONNE



SOUTHPOINT OFFICE
6000 TOWN CENTER BOULEVARD,
SUITE 300 EAST,
CANNONBURG, PA 15317
724-873-3545

PROJECT NO./DASH NO.
C141330-01

TASK NO. SUB TASK NO.
003 00

GROUP ID DRAWING NO.
D E001

SHEET 1 OF 44

6/7/2017 11:37 AM