



**KOP 39 (REVISED) - Three Ridges Overlook (REVISED), Looking Southeast - Existing View**



**KOP 39 (REVISED) - Three Ridges Overlook (REVISED), Looking Southeast - Proposed View: 75' Permanent ROW, 50' Temp. ROW**

For on-screen display:  
Scale bar to be 4 inches (101.6mm wide)  
Viewing distance is 19.7 inches (50 cm)

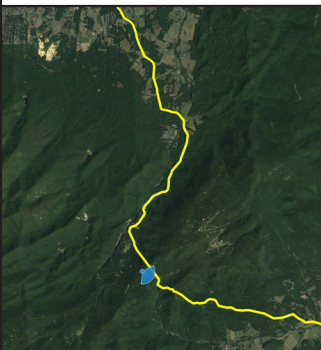
# Atlantic Coast Pipeline

---

**KOP 39 (REVISED)**  
Three Ridges Overlook (REVISED)

---

● Viewpoint Location    ● Project Area




---

Easting Position (UTM - Zone 17):	222337.4
Northing Position (UTM - Zone 17):	13771124.8
Elevation of Photopoint Position (AMSL):	2715.2
Height of Camera Above Ground (ft):	5.4
Date of Photography:	21 November 2016 at 02:41 PM
Orientation of View:	SE
Horizontal Field of View:	124°
Vertical Field of View:	55°

---

**NOTES:**

Viewpoint location has been terrain-aligned using 1/9 and 1/3 arc degrees terrain, sourced from USGS and with a camera mounted gps unit.  
Heights are above mean sea level.  
Projection/Zone/Datum:  
UTM ZONE 17

---

Photo Simulation Created Using  
TrueView™ Technology  
(Patent No.: US 8,184,906 B2)

Provided by

## Truescape

www.truescape.com

---

DATE	SHEET
05 January 2017	27





**KOP 39 (REVISED) - Three Ridges Overlook (REVISED), Looking Southeast - Existing View**



**KOP 39 (REVISED) - Three Ridges Overlook (REVISED), Looking Southeast - Proposed View: 75' Permanent ROW, 50' Temp. ROW (5 Year Tree Growth)**

For on-screen display:  
Scale bar to be 4 inches (101.6mm wide)  
Viewing distance is 19.7 inches (50 cm)

# Atlantic Coast Pipeline

---

**KOP 39 (REVISED)**  
Three Ridges Overlook (REVISED)

---

● Viewpoint Location     ● Project Area

---



---

Easting Position (UTM - Zone 17):	2223337.4
Northing Position (UTM - Zone 17):	13771124.8
Elevation of Photopoint Position (AMSL):	2715.2
Height of Camera Above Ground (ft):	5.4
Date of Photography:	21 November 2016 at 02:41 PM
Orientation of View:	SE
Horizontal Field of View:	124°
Vertical Field of View:	55°

---

**NOTES:**

Viewpoint location has been terrain-aligned using 1/9 and 1/3 arc degrees terrain, sourced from USGS and with a camera mounted gps unit.  
 Heights are above mean sea level.  
 Projection/Zone/Datum:  
 UTM ZONE 17

---

Photo Simulation Created Using  
 TrueView™ Technology  
 (Patent No.: US 8,184,906 B2)

Provided by

## Truescape

www.truescape.com

---

DATE	SHEET
05 January 2017	28





**KOP 39 (REVISED) - Three Ridges Overlook (REVISED), Looking Southeast - Existing View**



**KOP 39 (REVISED) - Three Ridges Overlook (REVISED), Looking Southeast - Proposed View: 75' Permanent ROW, 50' Temp. ROW (15-20 Year Tree Growth)**

For on-screen display:  
Scale bar to be 4 inches (101.6mm wide)  
Viewing distance is 19.7 inches (50 cm)

# Atlantic Coast Pipeline

---

**KOP 39 (REVISED)**  
Three Ridges Overlook (REVISED)

---

● Viewpoint Location     ● Project Area

---



---

Easting Position (UTM - Zone 17):	222337.4
Northing Position (UTM - Zone 17):	13771124.8
Elevation of Photopoint Position (AMSL):	2715.2
Height of Camera Above Ground (ft):	5.4
Date of Photography:	21 November 2016 at 02:41 PM
Orientation of View:	SE
Horizontal Field of View:	124°
Vertical Field of View:	55°

---

**NOTES:**

Viewpoint location has been terrain-aligned using 1/9 and 1/3 arc degrees terrain, sourced from USGS and with a camera mounted gps unit.  
Heights are above mean sea level.  
Projection/Zone/Datum:  
UTM ZONE 17

---

Photo Simulation Created Using  
TrueView™ Technology  
(Patent No.: US 8,184,906 B2)

Provided by

## Truescape

www.truescape.com

---

DATE 05 January 2017	SHEET 29
-------------------------	-------------





**KOP 39 (REVISED) - Three Ridges Overlook (REVISED), Looking Southeast - Existing View**



**KOP 39 (REVISED) - Three Ridges Overlook (REVISED), Looking Southeast - Proposed View: 75' Permanent ROW, 50' Temp. ROW (15-20 Year Tree Growth with indicative restoration)**

For on-screen display:  
Scale bar to be 4 inches (101.6mm wide)  
Viewing distance is 19.7 inches (50 cm)

# Atlantic Coast Pipeline

---

**KOP 39 (REVISED)**  
Three Ridges Overlook (REVISED)

---

● Viewpoint Location    ● Project Area

---



---

Easting Position (UTM - Zone 17):	222337.4
Northing Position (UTM - Zone 17):	13771124.8
Elevation of Photopoint Position (AMSL):	2715.2
Height of Camera Above Ground (ft):	5.4
Date of Photography:	21 November 2016 at 02:41 PM
Orientation of View:	SE
Horizontal Field of View:	124°
Vertical Field of View:	55°

---

**NOTES:**

Viewpoint location has been terrain-aligned using 1/9 and 1/3 arc degrees terrain, sourced from USGS and with a camera mounted gps unit.  
 Heights are above mean sea level.  
 Projection/Zone/Datum:  
 UTM ZONE 17

---

Photo Simulation Created Using  
 TrueView™ Technology  
 (Patent No.: US 8,184,906 B2)

Provided by

## Truescape

www.truescape.com

---

DATE	SHEET
05 January 2017	30





**ANST 08a - Three Ridges North Overlook, Looking South-Southeast - Existing View**



**ANST 08a - Three Ridges North Overlook, Looking South-Southeast - Proposed View: 75' Permanent ROW, 50' Temp. ROW**

For on-screen display:  
Scale bar to be 4 inches (101.6mm wide)  
Viewing distance is 19.7 inches (50 cm)

**Atlantic Coast Pipeline**®

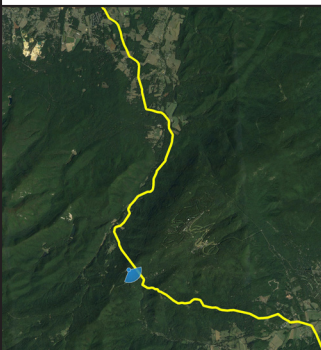
---

**ANST 08a**  
Three Ridges North Overlook

---

● Viewpoint Location     ● Project Area

---




---

Easting Position (UTM - Zone 17):	2223364.0
Northing Position (UTM - Zone 17):	13771174.9
Elevation of Photopoint Position (AMSL):	2715.2
Height of Camera Above Ground (ft):	5.4
Date of Photography:	21 November 2016 at 02:33 PM
Orientation of View:	SSE
Horizontal Field of View:	124°
Vertical Field of View:	55°

---

NOTES:

Viewpoint location has been terrain-aligned using 1/9 and 1/3 arc degrees terrain, sourced from USGS and with a camera mounted gps unit.  
Heights are above mean sea level.  
Projection/Zone/Datum:  
UTM ZONE 17

---

Photo Simulation Created Using  
TrueView™ Technology  
(Patent No.: US 8,184,906 B2)

Provided by

**Truescape**®

www.truescape.com

---

DATE	SHEET
05 January 2017	31





**ANST 08a - Three Ridges North Overlook, Looking South-Southeast - Existing View**



**ANST 08a - Three Ridges North Overlook, Looking South-Southeast - Proposed View: 75' Permanent ROW, 50' Temp. ROW (5 Year Tree Growth)**

For on-screen display:  
Scale bar to be 4 inches (101.6mm wide)  
Viewing distance is 19.7 inches (50 cm)

**Atlantic Coast Pipeline**®

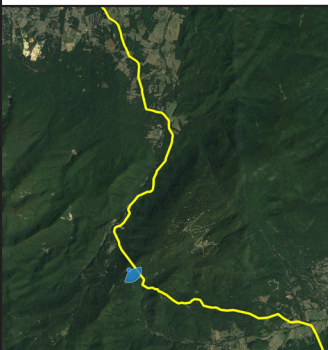
---

**ANST 08a**  
Three Ridges North Overlook

---

● Viewpoint Location     ● Project Area

---




---

Easting Position (UTM - Zone 17):	2223364.0
Northing Position (UTM - Zone 17):	13771174.9
Elevation of Photopoint Position (AMSL):	2715.2
Height of Camera Above Ground (ft):	5.4
Date of Photography:	21 November 2016 at 02:33 PM
Orientation of View:	SSE
Horizontal Field of View:	124°
Vertical Field of View:	55°

---

NOTES:

Viewpoint location has been terrain-aligned using 1/9 and 1/3 arc degrees terrain, sourced from USGS and with a camera mounted gps unit.  
Heights are above mean sea level.  
Projection/Zone/Datum:  
UTM ZONE 17

---

Photo Simulation Created Using  
TrueView™ Technology  
(Patent No.: US 8,184,906 B2)

Provided by

**Truescape**®

www.truescape.com

---

DATE 05 January 2017	SHEET 32
-------------------------	-------------





**ANST 08a - Three Ridges North Overlook, Looking South-Southeast - Existing View**



**ANST 08a - Three Ridges North Overlook, Looking South-Southeast - Proposed View: 75' Permanent ROW, 50' Temp. ROW (15-20 Year Tree Growth)**

For on-screen display:  
Scale bar to be 4 inches (101.6mm wide)  
Viewing distance is 19.7 inches (50 cm)

**Atlantic Coast Pipeline**®

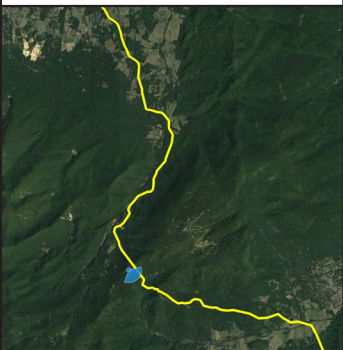
---

**ANST 08a**  
Three Ridges North Overlook

---

● Viewpoint Location     ● Project Area

---




---

Easting Position (UTM - Zone 17):	2223364.0
Northing Position (UTM - Zone 17):	13771174.9
Elevation of Photopoint Position (AMSL):	2715.2
Height of Camera Above Ground (ft):	5.4
Date of Photography:	21 November 2016 at 02:33 PM
Orientation of View:	SSE
Horizontal Field of View:	124°
Vertical Field of View:	55°

---

NOTES:

Viewpoint location has been terrain-aligned using 1/9 and 1/3 arc degrees terrain, sourced from USGS and with a camera mounted gps unit.  
Heights are above mean sea level.  
Projection/Zone/Datum:  
UTM ZONE 17

---

Photo Simulation Created Using  
TrueView™ Technology  
(Patent No.: US 8,184,906 B2)

Provided by

Truescape®

www.truescape.com

---

DATE	SHEET
05 January 2017	33





**ANST 08a - Three Ridges North Overlook, Looking South-Southeast - Existing View**



**ANST 08a - Three Ridges North Overlook, Looking South-Southeast - Proposed View: 75' Permanent ROW, 50' Temp. ROW (15-20 Year Tree Growth with indicative restoration)**

For on-screen display:  
Scale bar to be 4 inches (101.6mm wide)  
Viewing distance is 19.7 inches (50 cm)

**Atlantic Coast Pipeline**®

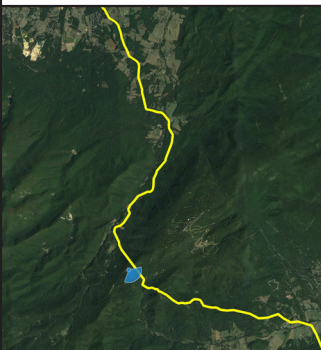
---

**ANST 08a**  
Three Ridges North Overlook

---

● Viewpoint Location     ● Project Area

---




---

Easting Position (UTM - Zone 17):	2223364.0
Northing Position (UTM - Zone 17):	13771174.9
Elevation of Photopoint Position (AMSL):	2715.2
Height of Camera Above Ground (ft):	5.4
Date of Photography:	21 November 2016 at 02:33 PM
Orientation of View:	SSE
Horizontal Field of View:	124°
Vertical Field of View:	55°

---

NOTES:

Viewpoint location has been terrain-aligned using 1/9 and 1/3 arc degrees terrain, sourced from USGS and with a camera mounted gps unit.  
Heights are above mean sea level.  
Projection/Zone/Datum:  
UTM ZONE 17

---

Photo Simulation Created Using  
TrueView™ Technology  
(Patent No.: US 8,184,906 B2)

Provided by

Truescape®

www.truescape.com

---

DATE 05 January 2017	SHEET 34
-------------------------	-------------





**ANST 08b - Three Ridges South Overlook, Looking East-Southeast - Existing View**



**ANST 08b - Three Ridges South Overlook, Looking East-Southeast - Proposed View: 75' Permanent ROW, 50' Temp. ROW**

For on-screen display:  
Scale bar to be 4 inches (101.6mm wide)  
Viewing distance is 19.7 inches (50 cm)

**Atlantic Coast Pipeline**®

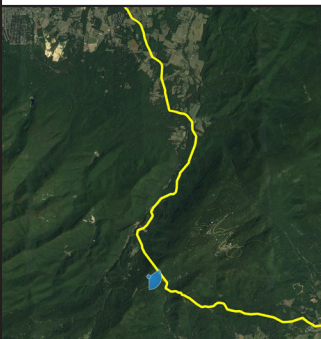
---

**ANST 08b**  
Three Ridges South Overlook

---

● Viewpoint Location     ● Project Area

---




---

Easting Position (UTM - Zone 17):	2223166.6
Northing Position (UTM - Zone 17):	13771039.1
Elevation of Photopoint Position (AMSL):	2706.0
Height of Camera Above Ground (ft):	5.4
Date of Photography:	21 November 2016 at 04:45 PM
Orientation of View:	ESE
Horizontal Field of View:	124°
Vertical Field of View:	55°

---

**NOTES:**

Viewpoint location has been terrain-aligned using 1/9 and 1/3 arc degrees terrain, sourced from USGS and with a camera mounted gps unit.  
Heights are above mean sea level.  
Projection/Zone/Datum:  
UTM ZONE 17

---

Photo Simulation Created Using  
TrueView™ Technology  
(Patent No.: US 8,184,906 B2)

Provided by

**Truescape**®

www.truescape.com

---

DATE	SHEET
05 January 2017	35





**ANST 08b - Three Ridges South Overlook, Looking East-Southeast - Existing View**



**ANST 08b - Three Ridges South Overlook, Looking East-Southeast - Proposed View: 75' Permanent ROW, 50' Temp. ROW (5 Year Tree Growth)**

For on-screen display:  
Scale bar to be 4 inches (101.6mm wide)  
Viewing distance is 19.7 inches (50 cm)

**Atlantic Coast Pipeline**®

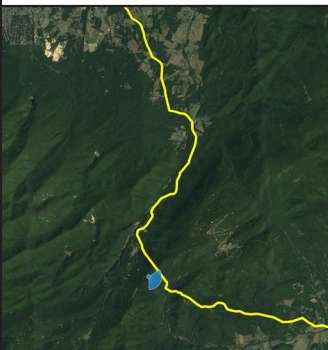
---

**ANST 08b**  
Three Ridges South Overlook

---

● Viewpoint Location     ● Project Area

---




---

Easting Position (UTM - Zone 17):	2223166.6
Northing Position (UTM - Zone 17):	13771039.1
Elevation of Photopoint Position (AMSL):	2706.0
Height of Camera Above Ground (ft):	5.4
Date of Photography:	21 November 2016 at 04:45 PM
Orientation of View:	ESE
Horizontal Field of View:	124°
Vertical Field of View:	55°

---

**NOTES:**

Viewpoint location has been terrain-aligned using 1/9 and 1/3 arc degrees terrain, sourced from USGS and with a camera mounted gps unit.  
Heights are above mean sea level.  
Projection/Zone/Datum:  
UTM ZONE 17

---

Photo Simulation Created Using  
TrueView™ Technology  
(Patent No.: US 8,184,906 B2)

Provided by

**Truescape**®

www.truescape.com

---

DATE	SHEET
05 January 2017	36





**ANST 08b - Three Ridges South Overlook, Looking East-Southeast - Existing View**



**ANST 08b - Three Ridges South Overlook, Looking East-Southeast - Proposed View: 75' Permanent ROW, 50' Temp. ROW (15-20 Year Tree Growth)**

For on-screen display:  
Scale bar to be 4 inches (101.6mm wide)  
Viewing distance is 19.7 inches (50 cm)

**Atlantic Coast Pipeline**®

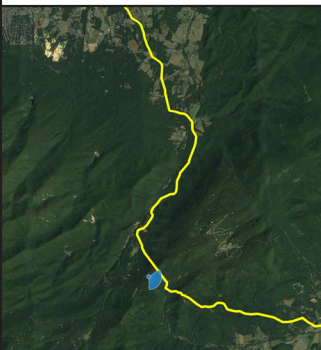
---

**ANST 08b**  
Three Ridges South Overlook

---

● Viewpoint Location     ● Project Area

---




---

Easting Position (UTM - Zone 17):	2223166.6
Northing Position (UTM - Zone 17):	13771039.1
Elevation of Photopoint Position (AMSL):	2706.0
Height of Camera Above Ground (ft):	5.4
Date of Photography:	21 November 2016 at 04:45 PM
Orientation of View:	ESE
Horizontal Field of View:	124°
Vertical Field of View:	55°

---

**NOTES:**

Viewpoint location has been terrain-aligned using 1/9 and 1/3 arc degrees terrain, sourced from USGS and with a camera mounted gps unit.  
Heights are above mean sea level.  
Projection/Zone/Datum:  
UTM ZONE 17

---

Photo Simulation Created Using  
TrueView™ Technology  
(Patent No.: US 8,184,906 B2)

Provided by

**Truescape**®

www.truescape.com

---

DATE	SHEET
05 January 2017	37





**ANST 08b - Three Ridges South Overlook, Looking East-Southeast - Existing View**



**ANST 08b - Three Ridges South Overlook, Looking East-Southeast - Proposed View: 75' Permanent ROW, 50' Temp. ROW (15-20 Year Tree Growth with indicative restoration)**

For on-screen display:  
Scale bar to be 4 inches (101.6mm wide)  
Viewing distance is 19.7 inches (50 cm)

**Atlantic Coast Pipeline**®

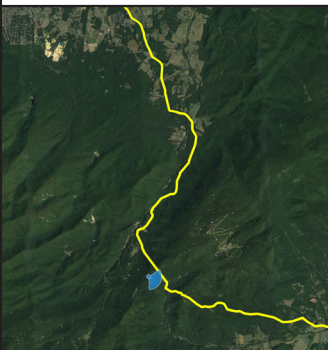
---

**ANST 08b**  
Three Ridges South Overlook

---

● Viewpoint Location     ● Project Area

---




---

Easting Position (UTM - Zone 17):	2223166.6
Northing Position (UTM - Zone 17):	13771039.1
Elevation of Photopoint Position (AMSL):	2706.0
Height of Camera Above Ground (ft):	5.4
Date of Photography:	21 November 2016 at 04:45 PM
Orientation of View:	ESE
Horizontal Field of View:	124°
Vertical Field of View:	55°

---

**NOTES:**

Viewpoint location has been terrain-aligned using 1/9 and 1/3 arc degrees terrain, sourced from USGS and with a camera mounted gps unit.  
Heights are above mean sea level.  
Projection/Zone/Datum:  
UTM ZONE 17

---

Photo Simulation Created Using  
TrueView™ Technology  
(Patent No.: US 8,184,906 B2)

Provided by

**Truescape**®

www.truescape.com

---

DATE	SHEET
05 January 2017	38





**SSF 01 - Greenbrier River Trail, Looking South - Existing View**



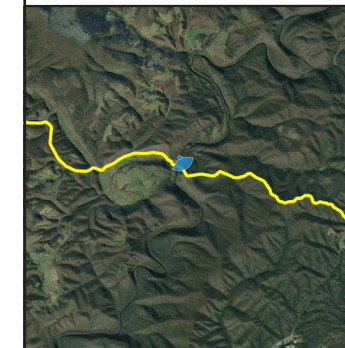
**SSF 01 - Greenbrier River Trail, Looking South - Proposed View: 75' Permanent ROW, 50' Temp. ROW**

For on-screen display:  
Scale bar to be 4 inches (101.6mm wide)  
Viewing distance is 19.7 inches (50 cm)

**Atlantic  
Coast  
Pipeline**

**SSF 01**  
Greenbrier River Trail

Viewpoint Location    Project Area



Easting Position (UTM - Zone 17):	1936156.7
Northing Position (UTM - Zone 17):	13922577.1
Elevation of Photopoint Position (AMSL):	2286.4
Height of Camera Above Ground (ft):	5.4
Date of Photography:	22 November 2016 at 11:07 AM
Orientation of View:	S
Horizontal Field of View:	124°
Vertical Field of View:	55°

**NOTES:**  
Viewpoint location has been terrain-aligned using 1/9 and 1/3 arc degrees terrain, sourced from USGS and with a camera mounted gps unit.  
Heights are above mean sea level.  
Projection/Zone/Datum:  
UTM ZONE 17

Photo Simulation Created Using  
TrueView™ Technology  
(Patent No.: US 8,184,906 B2)

Provided by

**Truescape**

www.truescape.com

DATE	SHEET
05 January 2017	39





**SSF 01 - Greenbrier River Trail, Looking South - Existing View**



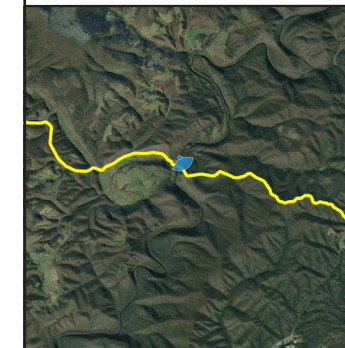
**SSF 01 - Greenbrier River Trail, Looking South - Proposed View: 75' Permanent ROW, 50' Temp. ROW (5 Year Tree Growth)**

For on-screen display:  
Scale bar to be 4 inches (101.6mm wide)  
Viewing distance is 19.7 inches (50 cm)

**Atlantic  
Coast  
Pipeline**

**SSF 01**  
Greenbrier River Trail

● Viewpoint Location ● Project Area



Easting Position (UTM - Zone 17):	1936156.7
Northing Position (UTM - Zone 17):	13922577.1
Elevation of Photopoint Position (AMSL):	2286.4
Height of Camera Above Ground (ft):	5.4
Date of Photography:	22 November 2016 at 11:07 AM
Orientation of View:	S
Horizontal Field of View:	124°
Vertical Field of View:	55°

**NOTES:**  
Viewpoint location has been terrain-aligned using 1/9 and 1/3 arc degrees terrain, sourced from USGS and with a camera mounted gps unit.  
Heights are above mean sea level.  
Projection/Zone/Datum:  
UTM ZONE 17

Photo Simulation Created Using  
TrueView™ Technology  
(Patent No.: US 8,184,906 B2)

Provided by

**Truescape**

www.truescape.com

DATE 05 January 2017	SHEET 40
-------------------------	-------------