




KOP34 - Torry Ridge Trail 1, Looking Southeast - Existing View



KOP34 - Torry Ridge Trail 1, Looking Southeast - Proposed View (Right Of Way Overlaid) #

h

For on-screen display:
Scale bar to be 4 inches (101.6mm wide)
Viewing distance is 19.7 inches (50 cm)

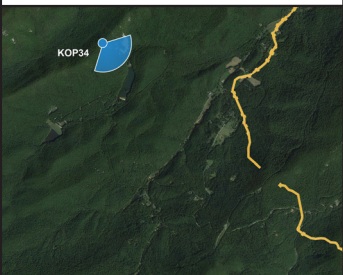


**ERM - ACP Pipeline ROW
Additional Forestry**

Viewpoint KOP34

Torry Ridge Trail 1
with Contingency Right of Way (ROW) shown

● Viewpoint Location ● Project Area



NOTE: The above pipeline ROW alignment has been exaggerated in width for visual purposes only and does not represent the actual width of the pipeline ROW.

Easting Position (UTM - Zone 17):	2214670.3
Northing Position (UTM - Zone 17):	13778971.8
Elevation of Photopoint Position (NAVD83):	2644.2
Height of Camera Above Ground (ft):	5.4
Date of Photography:	6-Nov-15 at 04:04 PM
Orientation of View:	SE
Horizontal Field of View:	124°
Vertical Field of View:	55°

NOTES:


Viewpoint location has been terrain-aligned using 1/9 and 1/3 arc degrees terrain, sourced from USGS and with a camera mounted gps unit.

Heights are above mean sea level.
Projection/Zone/Datum:
UTM ZONE 17, NAD83

No part of this photo simulation shall be altered in any way.
Visual assessments should be made from the full size TrueView™ only.

Photo Simulation Created Using
TrueView™ Technology
(Patent No.: US 8,184,906 B2)

Provided by



www.truescape.com


<small>DATE</small> 21 April 2016	<small>SHEET</small> 4
--------------------------------------	---------------------------



KOP40 - Bee Mountain, Appalachian Trail, Looking Northeast - Existing View



KOP40 - Bee Mountain, Appalachian Trail, Looking Northeast - Proposed View

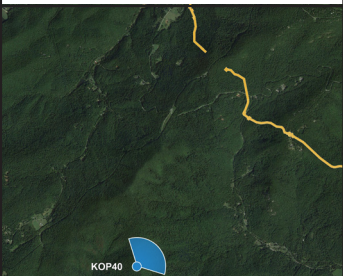


**ERM - ACP Pipeline ROW
Additional Forestry**

Viewpoint KOP40

Bee Mountain, Appalachian Trail
with Contingency Right of Way (ROW) shown

● Viewpoint Location ● Project Area



NOTE: The above pipeline ROW alignment has been exaggerated in width for visual purposes only and does not represent the actual width of the pipeline ROW.

Easting Position (UTM - Zone 17):	2219906.9
Northing Position (UTM - Zone 17):	13760771.3
Elevation of Photopoint Position (NAVD83):	3068.4
Height of Camera Above Ground (ft):	5.4
Date of Photography:	5-Nov-15 at 2:04 p.m.
Orientation of View:	NE
Horizontal Field of View:	124°
Vertical Field of View:	55°

NOTES:


Viewpoint location has been terrain-aligned using 1/9 and 1/3 arc degrees terrain, sourced from USGS and with a camera mounted gps unit.

Heights are above mean sea level.
Projection/Zone/Datum:
UTM ZONE 17, NAD83

No part of this photo simulation shall be altered in any way.
Visual assessments should be made from the full size TrueView™ only.

Photo Simulation Created Using
TrueView™ Technology
(Patent No.: US 8,184,906 B2)

Provided by



www.truescape.com

<small>DATE</small> 21 April 2016	<small>SHEET</small> 5
--------------------------------------	---------------------------

For on-screen display:
Scale bar to be 4 inches (101.6mm wide)
Viewing distance is 19.7 inches (50 cm)




Viewpoint KOP40 - Bee Mountain, Appalachian Trail, Looking Northeast - Existing View



Viewpoint KOP40 - Bee Mountain, Appalachian Trail, Looking Northeast - Proposed View (Right Of Way Overlaid) #

h

For on-screen display:
Scale bar to be 4 inches (101.6mm wide)
Viewing distance is 19.7 inches (50 cm)




**ERM - ACP Pipeline ROW
Additional Forestry**

Viewpoint KOP40

Bee Mountain, Appalachian Trail
with Contingency Right of Way (ROW) shown

● Viewpoint Location
● Project Area



KOP40

NOTE: The above pipeline ROW alignment has been exaggerated in width for visual purposes only and does not represent the actual width of the pipeline ROW.

Easting Position (UTM - Zone 17):	2219906.9
Northing Position (UTM - Zone 17):	13760771.3
Elevation of Photopoint Position (NAVD83):	3068.4
Height of Camera Above Ground (ft):	5.4
Date of Photography:	5-Nov-15 at 2:04 p.m.
Orientation of View:	NE
Horizontal Field of View:	124°
Vertical Field of View:	55°

NOTES:

Viewpoint location has been terrain-aligned using 1/9 and 1/3 arc degrees terrain, sourced from USGS and with a camera mounted gps unit.


Heights are above mean sea level.
Projection/Zone/Datum:
UTM ZONE 17, NAD83

No part of this photo simulation shall be altered in any way.

Visual assessments should be made from the full size TrueView™ only.

Photo Simulation Created Using
 TrueView™ Technology
 (Patent No.: US 8,184,906 B2)

Provided by

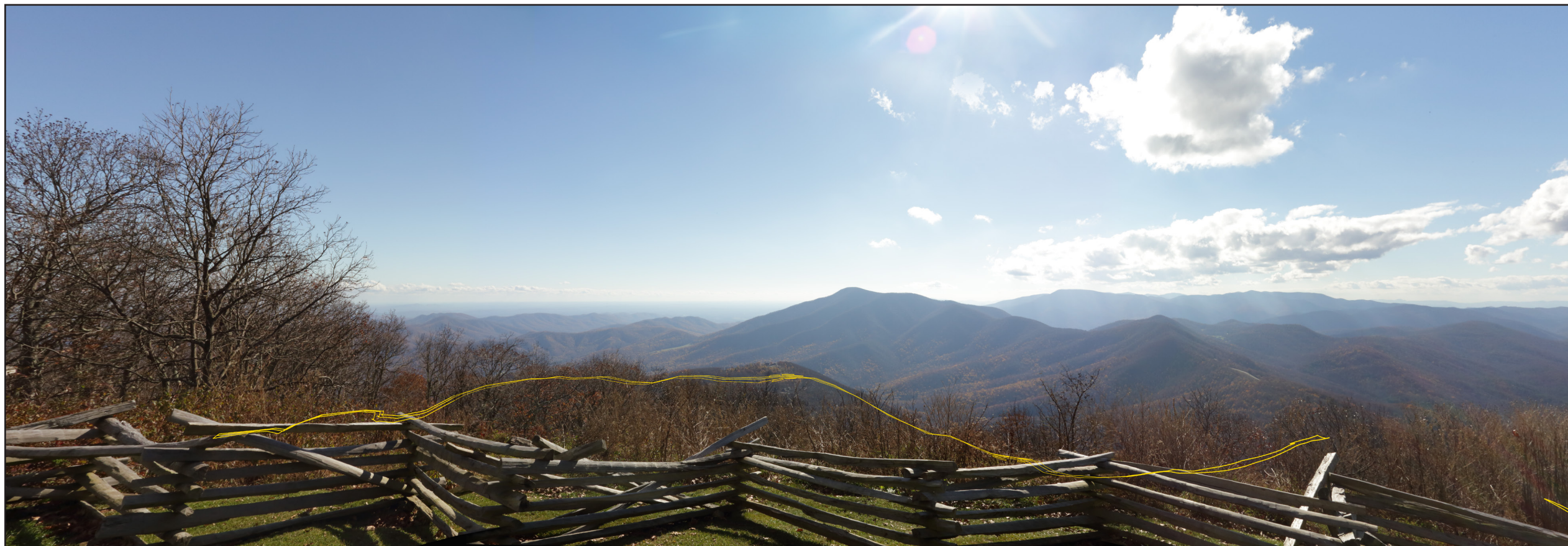


www.truescape.com

DATE	SHEET
21 April 2016	6



KOP65 - Devil's Knob, Looking South - Existing View



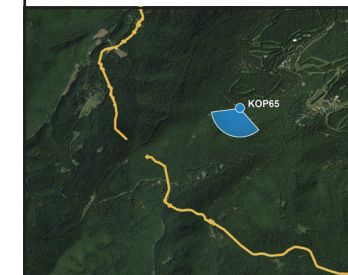
KOP65 - Devil's Knob, Looking South - Proposed View (Right Of Way Overlaid) #

For on-screen display:
Scale bar to be 4 inches (101.6mm wide)
Viewing distance is 19.7 inches (50 cm)

Viewpoint KOP65

Devil's Knob
with Contingency Right of Way (ROW) shown

● Viewpoint Location ● Project Area



NOTE: The above pipeline ROW alignment has been exaggerated in width for visual purposes only and does not represent the actual width of the pipeline ROW.

Easting Position (UTM - Zone 17):	2229251.1
Northing Position (UTM - Zone 17):	113774276.5
Elevation of Photopoint Position (NAVD83):	3729.1
Height of Camera Above Ground (ft):	5.4
Date of Photography:	5-Nov-15 at 2:50 p.m.
Orientation of View:	S
Horizontal Field of View:	124°
Vertical Field of View:	55°

NOTES:
Viewpoint locations have been precision surveyed by:
Rick Casteel & Adam Bosley
E3 Engineering
LLC
Heights are above mean sea level.
Projection/Zone/Datum:
UTM ZONE 17, NAD83
No part of this photo simulation shall be altered in any way.
Visual assessments should be made from the full size TrueView™ only.

Photo Simulation Created Using
TrueView™ Technology
(Patent No.: US 8,184,906 B2)

Provided by
Truescape®

www.truescape.com

DATE	SHEET
21 April 2016	8



ANST 01 - Afton Mountain, Looking North - Existing View



ANST 01 - Afton Mountain, Looking North - Proposed View: No View of ROW

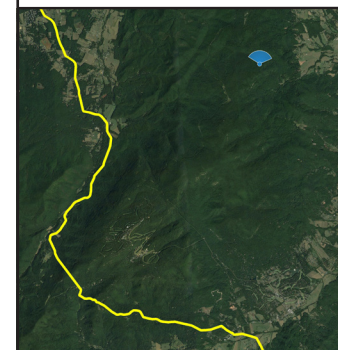
For on-screen display:
Scale bar to be 4 inches (101.6mm wide)
Viewing distance is 19.7 inches (50 cm)

**Atlantic
Coast
Pipeline**

ANST 01

Afton Mountain

Viewpoint Location Project Area



Eastings Position (UTM - Zone 17):	2250788.8
Northing Position (UTM - Zone 17):	13798708.6
Elevation of Photopoint Position (AMSL):	2012.6
Height of Camera Above Ground (ft):	5.4
Date of Photography:	21 November 2016 at 03:52 PM
Orientation of View:	N
Horizontal Field of View:	124°
Vertical Field of View:	55°

NOTES:

Viewpoint location has been terrain-aligned using 1/9 and 1/3 arc degrees terrain, sourced from USGS and with a camera mounted gps unit.
Heights are above mean sea level.
Projection/Zone/Datum:
UTM ZONE 17

Photo Simulation Created Using
TrueView™ Technology
(Patent No.: US 8,184,906 B2)

Provided by

Truescape

www.truescape.com

DATE	SHEET
05 January 2017	4



ANST 02 - Humpback Rocks, Looking Northwest - Existing View



ANST 02 - Humpback Rocks, Looking Northwest - Proposed View: 75' Permanent ROW, 50' Temp. ROW

For on-screen display:
Scale bar to be 4 inches (101.6mm wide)
Viewing distance is 19.7 inches (50 cm)

**Atlantic
Coast
Pipeline**®

ANST 02
Humpback Rocks

● Viewpoint Location ● Project Area



Eastings Position (UTM - Zone 17):	2245449.9
Northing Position (UTM - Zone 17):	13791328.7
Elevation of Photopoint Position (AMSL):	3114.2
Height of Camera Above Ground (ft):	5.4
Date of Photography:	21 November 2016 at 05:21 PM
Orientation of View:	NW
Horizontal Field of View:	124°
Vertical Field of View:	55°

NOTES:
Viewpoint location has been terrain-aligned using 1/9 and 1/3 arc degrees terrain, sourced from USGS and with a camera mounted gps unit.
Heights are above mean sea level.
Projection/Zone/Datum:
UTM ZONE 17

Photo Simulation Created Using
TrueView™ Technology
(Patent No.: US 8,184,906 B2)

Provided by

Truescape®

www.truescape.com

DATE 05 January 2017	SHEET 5
-------------------------	------------



ANST 02 - Humpback Rocks, Looking Northwest - Existing View



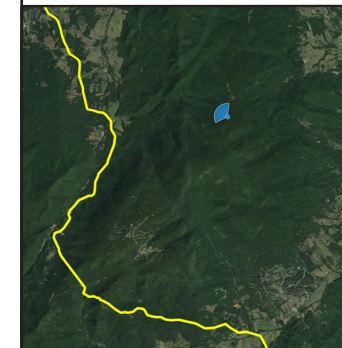
ANST 02 - Humpback Rocks, Looking Northwest - Indicative Overlay: 75' Permanent ROW, 50' Temp. ROW

For on-screen display:
Scale bar to be 4 inches (101.6mm wide)
Viewing distance is 19.7 inches (50 cm)

Atlantic Coast Pipeline

ANST 02
Humpback Rocks

● Viewpoint Location ● Project Area



Eastings Position (UTM - Zone 17):	2245449.9
Northing Position (UTM - Zone 17):	13791328.7
Elevation of Photopoint Position (AMSL):	3114.2
Height of Camera Above Ground (ft):	5.4
Date of Photography:	21 November 2016 at 05:21 PM
Orientation of View:	NW
Horizontal Field of View:	124°
Vertical Field of View:	55°

NOTES:
Viewpoint location has been terrain-aligned using 1/9 and 1/3 arc degrees terrain, sourced from USGS and with a camera mounted gps unit.
Heights are above mean sea level.
Projection/Zone/Datum:
UTM ZONE 17

Photo Simulation Created Using
TrueView™ Technology
(Patent No.: US 8,184,906 B2)

Provided by

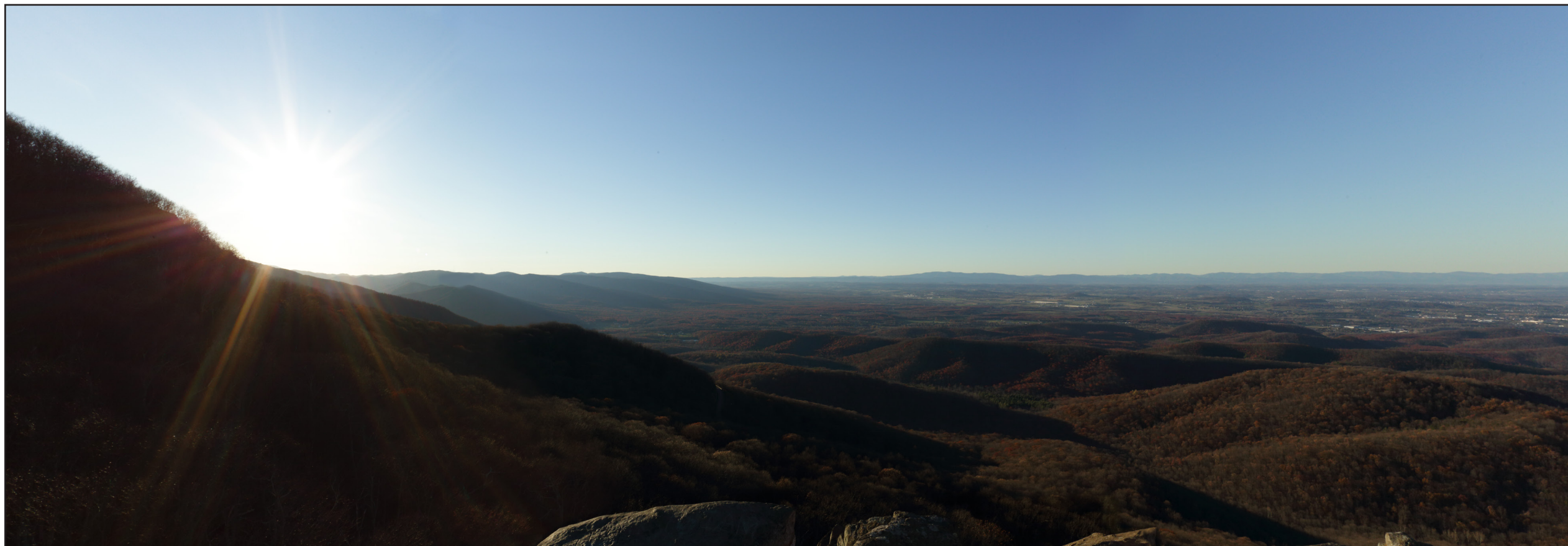
Truescape

www.truescape.com

DATE	SHEET
05 January 2017	6



ANST 02 - Humpback Rocks, Looking Northwest - Existing View



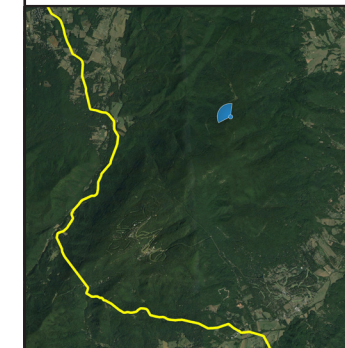
ANST 02 - Humpback Rocks, Looking Northwest - Proposed View: 75' Permanent ROW, 50' Temp. ROW (5 Year Tree Growth)

For on-screen display:
Scale bar to be 4 inches (101.6mm wide)
Viewing distance is 19.7 inches (50 cm)

Atlantic Coast Pipeline

ANST 02
Humpback Rocks

● Viewpoint Location ● Project Area



Eastings Position (UTM - Zone 17):	2245449.9
Northing Position (UTM - Zone 17):	13791328.7
Elevation of Photopoint Position (AMSL):	3114.2
Height of Camera Above Ground (ft):	5.4
Date of Photography:	21 November 2016 at 05:21 PM
Orientation of View:	NW
Horizontal Field of View:	124°
Vertical Field of View:	55°

NOTES:
Viewpoint location has been terrain-aligned using 1/9 and 1/3 arc degrees terrain, sourced from USGS and with a camera mounted gps unit.
Heights are above mean sea level.
Projection/Zone/Datum:
UTM ZONE 17

Photo Simulation Created Using
TrueView™ Technology
(Patent No.: US 8,184,906 B2)

Provided by

Truescape

www.truescape.com

DATE	SHEET
05 January 2017	7



ANST 02 - Humpback Rocks, Looking Northwest - Existing View



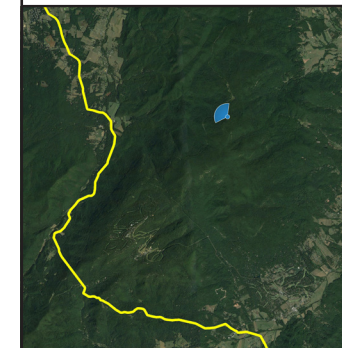
ANST 02 - Humpback Rocks, Looking Northwest - Proposed View: 75' Permanent ROW, 50' Temp. ROW (15-20 Year Tree Growth)

For on-screen display:
Scale bar to be 4 inches (101.6mm wide)
Viewing distance is 19.7 inches (50 cm)

**Atlantic
Coast
Pipeline**®

ANST 02
Humpback Rocks

● Viewpoint Location ● Project Area



Eastings Position (UTM - Zone 17):	2245449.9
Northing Position (UTM - Zone 17):	13791328.7
Elevation of Photopoint Position (AMSL):	3114.2
Height of Camera Above Ground (ft):	5.4
Date of Photography:	21 November 2016 at 05:21 PM
Orientation of View:	NW
Horizontal Field of View:	124°
Vertical Field of View:	55°

NOTES:
Viewpoint location has been terrain-aligned using 1/9 and 1/3 arc degrees terrain, sourced from USGS and with a camera mounted gps unit.
Heights are above mean sea level.
Projection/Zone/Datum:
UTM ZONE 17

Photo Simulation Created Using
TrueView™ Technology
(Patent No.: US 8,184,906 B2)

Provided by

Truescape®

www.truescape.com

DATE 05 January 2017	SHEET 8
-------------------------	------------



ANST 03 - Battery Cliffs, Looking West-Northwest - Existing View



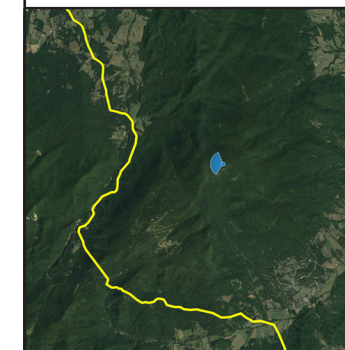
ANST 03 - Battery Cliffs, Looking West-Northwest - Proposed View: 75' Permanent ROW, 50' Temp. ROW

For on-screen display:
Scale bar to be 4 inches (101.6mm wide)
Viewing distance is 19.7 inches (50 cm)

Atlantic Coast Pipeline

ANST 03
Battery Cliffs

Viewpoint Location Project Area



Easting Position (UTM - Zone 17):	2242516.9
Northing Position (UTM - Zone 17):	13785131.6
Elevation of Photopoint Position (AMSL):	3542.0
Height of Camera Above Ground (ft):	5.4
Date of Photography:	1 December 2016 at 10:38 AM
Orientation of View:	WNW
Horizontal Field of View:	124°
Vertical Field of View:	55°

NOTES:
Viewpoint location has been terrain-aligned using 1/9 and 1/3 arc degrees terrain, sourced from USGS and with a camera mounted gps unit.
Heights are above mean sea level.
Projection/Zone/Datum:
UTM ZONE 17

Photo Simulation Created Using
TrueView™ Technology
(Patent No.: US 8,184,906 B2)

Provided by

Truescape

www.truescape.com

DATE 05 January 2017	SHEET 9
-------------------------	------------



ANST 03 - Battery Cliffs, Looking West-Northwest - Existing View



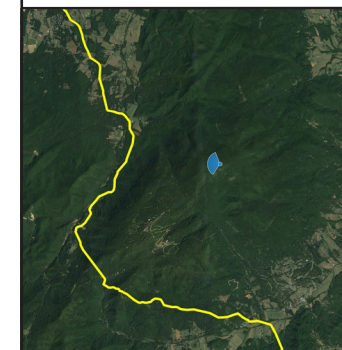
ANST 03 - Battery Cliffs, Looking West-Northwest - Indicative Overlay: 75' Permanent ROW, 50' Temp. ROW

For on-screen display.
Scale bar to be 4 inches (101.6mm wide)
Viewing distance is 19.7 inches (50 cm)

**Atlantic
Coast
Pipeline**®

ANST 03
Battery Cliffs

● Viewpoint Location ● Project Area



Easting Position (UTM - Zone 17):	2242516.9
Northing Position (UTM - Zone 17):	13785131.6
Elevation of Photopoint Position (AMSL):	3542.0
Height of Camera Above Ground (ft):	5.4
Date of Photography:	1 December 2016 at 10:38 AM
Orientation of View:	WNW
Horizontal Field of View:	124°
Vertical Field of View:	55°

NOTES:
Viewpoint location has been terrain-aligned using 1/9 and 1/3 arc degrees terrain, sourced from USGS and with a camera mounted gps unit.
Heights are above mean sea level.
Projection/Zone/Datum:
UTM ZONE 17

Photo Simulation Created Using
TrueView™ Technology
(Patent No.: US 8,184,906 B2)

Provided by

Truescape®

www.truescape.com

DATE	SHEET
05 January 2017	10



ANST 03 - Battery Cliffs, Looking West-Northwest - Existing View

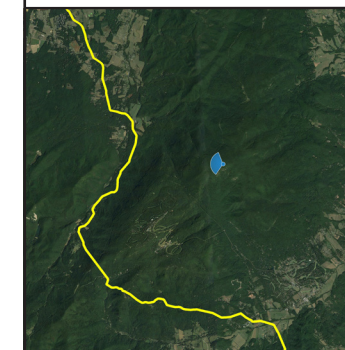


ANST 03 - Battery Cliffs, Looking West-Northwest - Proposed View: 75' Permanent ROW, 50' Temp. ROW (5 Year Tree Growth)

For on-screen display:
Scale bar to be 4 inches (101.6mm wide)
Viewing distance is 19.7 inches (50 cm)

ANST 03
Battery Cliffs

● Viewpoint Location ● Project Area



Easting Position (UTM - Zone 17):	2242516.9
Northing Position (UTM - Zone 17):	13785131.6
Elevation of Photopoint Position (AMSL):	3542.0
Height of Camera Above Ground (ft):	5.4
Date of Photography:	1 December 2016 at 10:38 AM
Orientation of View:	WNW
Horizontal Field of View:	124°
Vertical Field of View:	55°

NOTES:
Viewpoint location has been terrain-aligned using 1/9 and 1/3 arc degrees terrain, sourced from USGS and with a camera mounted gps unit.
Heights are above mean sea level.
Projection/Zone/Datum:
UTM ZONE 17

Photo Simulation Created Using
TrueView™ Technology
(Patent No.: US 8,184,906 B2)

Provided by

Truescape

www.truescape.com

DATE 05 January 2017	SHEET 11
-------------------------	-------------



ANST 03 - Battery Cliffs, Looking West-Northwest - Existing View



ANST 03 - Battery Cliffs, Looking West-Northwest - Proposed View: 75' Permanent ROW, 50' Temp. ROW (15-20 Year Tree Growth)

For on-screen display:
Scale bar to be 4 inches (101.6mm wide)
Viewing distance is 19.7 inches (50 cm)

**Atlantic
Coast
Pipeline**

ANST 03
Battery Cliffs

● Viewpoint Location ● Project Area



Easting Position (UTM - Zone 17):	2242516.9
Northing Position (UTM - Zone 17):	13785131.6
Elevation of Photopoint Position (AMSL):	3542.0
Height of Camera Above Ground (ft):	5.4
Date of Photography:	1 December 2016 at 10:38 AM
Orientation of View:	WNW
Horizontal Field of View:	124°
Vertical Field of View:	55°

NOTES:
Viewpoint location has been terrain-aligned using 1/9 and 1/3 arc degrees terrain, sourced from USGS and with a camera mounted gps unit.
Heights are above mean sea level.
Projection/Zone/Datum:
UTM ZONE 17

Photo Simulation Created Using
TrueView™ Technology
(Patent No.: US 8,184,906 B2)

Provided by

Truescape

www.truescape.com

DATE 05 January 2017	SHEET 12
-------------------------	-------------



ANST 04 - Laurel Springs, Looking Northwest - Existing View



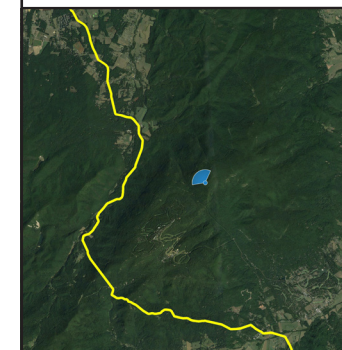
ANST 04 - Laurel Springs, Looking Northwest - Proposed View: 75' Permanent ROW, 50' Temp. ROW

For on-screen display:
Scale bar to be 4 inches (101.6mm wide)
Viewing distance is 19.7 inches (50 cm)

ANST 04

Laurel Springs

Viewpoint Location Project Area



Eastings Position (UTM - Zone 17):	2238677.3
Northing Position (UTM - Zone 17):	13783641.2
Elevation of Photopoint Position (AMSL):	3315.6
Height of Camera Above Ground (ft):	5.4
Date of Photography:	1 December 2016 at 11:18 AM
Orientation of View:	NW
Horizontal Field of View:	124°
Vertical Field of View:	55°

NOTES:

Viewpoint location has been terrain-aligned using 1/9 and 1/3 arc degrees terrain, sourced from USGS and with a camera mounted gps unit.
Heights are above mean sea level.
Projection/Zone/Datum:
UTM ZONE 17

Photo Simulation Created Using
TrueView™ Technology
(Patent No.: US 8,184,906 B2)

Provided by

Truescape

www.truescape.com

DATE	SHEET
05 January 2017	13



ANST 04 - Laurel Springs, Looking Northwest - Existing View



ANST 04 - Laurel Springs, Looking Northwest - Indicative Overlay: 75' Permanent ROW, 50' Temp. ROW

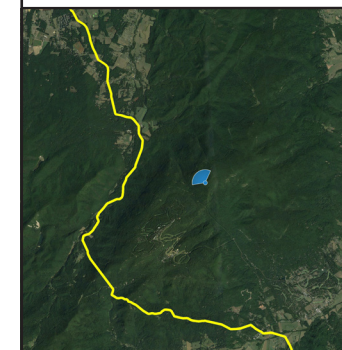
For on-screen display:
Scale bar to be 4 inches (101.6mm wide)
Viewing distance is 19.7 inches (50 cm)

Atlantic Coast Pipeline

ANST 04

Laurel Springs

● Viewpoint Location ● Project Area



Eastings Position (UTM - Zone 17):	2238677.3
Northing Position (UTM - Zone 17):	13783641.2
Elevation of Photopoint Position (AMSL):	3315.6
Height of Camera Above Ground (ft):	5.4
Date of Photography:	1 December 2016 at 11:18 AM
Orientation of View:	NW
Horizontal Field of View:	124°
Vertical Field of View:	55°

NOTES:

Viewpoint location has been terrain-aligned using 1/9 and 1/3 arc degrees terrain, sourced from USGS and with a camera mounted gps unit.
Heights are above mean sea level.
Projection/Zone/Datum:
UTM ZONE 17

Photo Simulation Created Using
TrueView™ Technology
(Patent No.: US 8,184,906 B2)

Provided by

Truescape

www.truescape.com

DATE	SHEET
05 January 2017	14



ANST 04 - Laurel Springs, Looking Northwest - Existing View



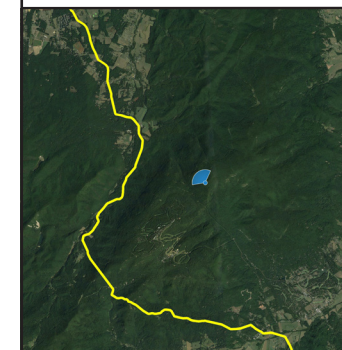
ANST 04 - Laurel Springs, Looking Northwest - Proposed View: 75' Permanent ROW, 50' Temp. ROW (5 Year Tree Growth)

For on-screen display:
Scale bar to be 4 inches (101.6mm wide)
Viewing distance is 19.7 inches (50 cm)

ANST 04

Laurel Springs

● Viewpoint Location ● Project Area



Eastings Position (UTM - Zone 17):	2238677.3
Northing Position (UTM - Zone 17):	13783641.2
Elevation of Photopoint Position (AMSL):	3315.6
Height of Camera Above Ground (ft):	5.4
Date of Photography:	1 December 2016 at 11:18 AM
Orientation of View:	NW
Horizontal Field of View:	124°
Vertical Field of View:	55°

NOTES:

Viewpoint location has been terrain-aligned using 1/9 and 1/3 arc degrees terrain, sourced from USGS and with a camera mounted gps unit.
Heights are above mean sea level.
Projection/Zone/Datum:
UTM ZONE 17

Photo Simulation Created Using
TrueView™ Technology
(Patent No.: US 8,184,906 B2)

Provided by

Truescape

www.truescape.com

DATE 05 January 2017	SHEET 15
-------------------------	-------------



ANST 04 - Laurel Springs, Looking Northwest - Existing View



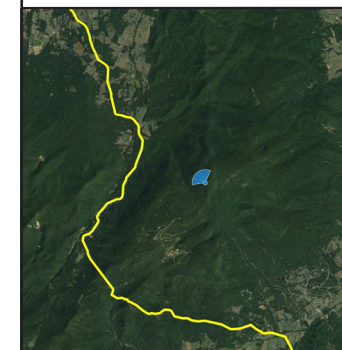
ANST 04 - Laurel Springs, Looking Northwest - Proposed View: 75' Permanent ROW, 50' Temp. ROW (15-20 Year Tree Growth)

For on-screen display:
Scale bar to be 4 inches (101.6mm wide)
Viewing distance is 19.7 inches (50 cm)

ANST 04

Laurel Springs

● Viewpoint Location ● Project Area



Eastings Position (UTM - Zone 17):	2238677.3
Northing Position (UTM - Zone 17):	13783641.2
Elevation of Photopoint Position (AMSL):	3315.6
Height of Camera Above Ground (ft):	5.4
Date of Photography:	1 December 2016 at 11:18 AM
Orientation of View:	NW
Horizontal Field of View:	124°
Vertical Field of View:	55°

NOTES:

Viewpoint location has been terrain-aligned using 1/9 and 1/3 arc degrees terrain, sourced from USGS and with a camera mounted gps unit.
Heights are above mean sea level.
Projection/Zone/Datum:
UTM ZONE 17

Photo Simulation Created Using
TrueView™ Technology
(Patent No.: US 8,184,906 B2)

Provided by

Truescape

www.truescape.com

DATE	SHEET
05 January 2017	16



ANST 05 - Cedar Cliffs B, Looking Northwest - Existing View

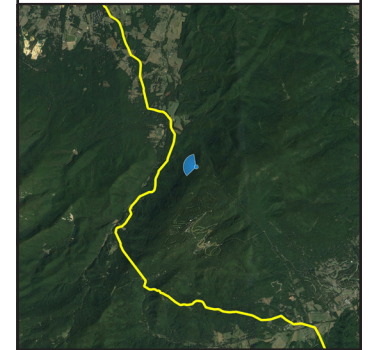


ANST 05 - Cedar Cliffs B, Looking Northwest - Proposed View: 75' Permanent ROW, 50' Temp. ROW

For on-screen display:
Scale bar to be 4 inches (101.6mm wide)
Viewing distance is 19.7 inches (50 cm)

ANST 05
Cedar Cliffs B

● Viewpoint Location ● Project Area



Easting Position (UTM - Zone 17):	2233562.7
Northing Position (UTM - Zone 17):	13785356.2
Elevation of Photopoint Position (AMSL):	2829.7
Height of Camera Above Ground (ft):	5.4
Date of Photography:	1 December 2016 at 02:44 PM
Orientation of View:	NW
Horizontal Field of View:	124°
Vertical Field of View:	55°

NOTES:
Viewpoint location has been terrain-aligned using 1/9 and 1/3 arc degrees terrain, sourced from USGS and with a camera mounted gps unit.
Heights are above mean sea level.
Projection/Zone/Datum:
UTM ZONE 17

Photo Simulation Created Using
TrueView™ Technology
(Patent No.: US 8,184,906 B2)

Provided by

Truescape

www.truescape.com

DATE	SHEET
05 January 2017	17



ANST 05 - Cedar Cliffs B, Looking Northwest - Existing View

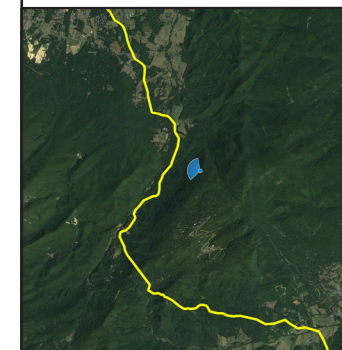


ANST 05 - Cedar Cliffs B, Looking Northwest - Proposed View: 75' Permanent ROW, 50' Temp. ROW (5 Year Tree Growth)

For on-screen display:
Scale bar to be 4 inches (101.6mm wide)
Viewing distance is 19.7 inches (50 cm)

ANST 05
Cedar Cliffs B

● Viewpoint Location ● Project Area



Easting Position (UTM - Zone 17):	2233562.7
Northing Position (UTM - Zone 17):	13785356.2
Elevation of Photopoint Position (AMSL):	2829.7
Height of Camera Above Ground (ft):	5.4
Date of Photography:	1 December 2016 at 02:44 PM
Orientation of View:	NW
Horizontal Field of View:	124°
Vertical Field of View:	55°

NOTES:
Viewpoint location has been terrain-aligned using 1/9 and 1/3 arc degrees terrain, sourced from USGS and with a camera mounted gps unit.
Heights are above mean sea level.
Projection/Zone/Datum:
UTM ZONE 17

Photo Simulation Created Using
TrueView™ Technology
(Patent No.: US 8,184,906 B2)

Provided by

Truescape

www.truescape.com

DATE	SHEET
05 January 2017	18



ANST 05 - Cedar Cliffs B, Looking Northwest - Existing View

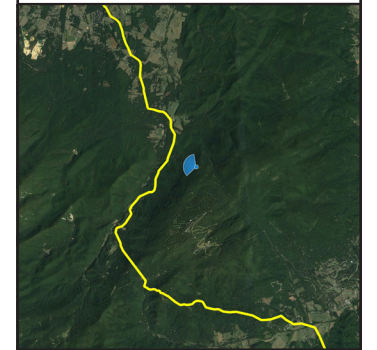


ANST 05 - Cedar Cliffs B, Looking Northwest - Proposed View: 75' Permanent ROW, 50' Temp. ROW (15-20 Year Tree Growth)

For on-screen display:
Scale bar to be 4 inches (101.6mm wide)
Viewing distance is 19.7 inches (50 cm)

ANST 05
Cedar Cliffs B

● Viewpoint Location ● Project Area



Easting Position (UTM - Zone 17):	2233562.7
Northing Position (UTM - Zone 17):	13785356.2
Elevation of Photopoint Position (AMSL):	2829.7
Height of Camera Above Ground (ft):	5.4
Date of Photography:	1 December 2016 at 02:44 PM
Orientation of View:	NW
Horizontal Field of View:	124°
Vertical Field of View:	55°

NOTES:
Viewpoint location has been terrain-aligned using 1/9 and 1/3 arc degrees terrain, sourced from USGS and with a camera mounted gps unit.
Heights are above mean sea level.
Projection/Zone/Datum:
UTM ZONE 17

Photo Simulation Created Using
TrueView™ Technology
(Patent No.: US 8,184,906 B2)

Provided by

Truescape®

www.truescape.com

DATE	SHEET
05 January 2017	19



ANST 06 - Little Ravens Roost A, Looking West-Northwest - Existing View



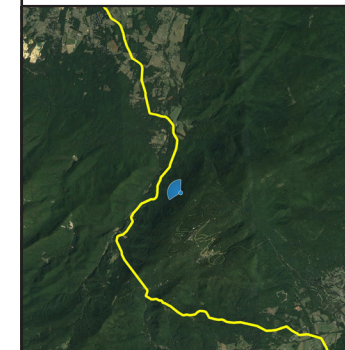
ANST 06 - Little Ravens Roost A, Looking West-Northwest - Proposed View: 75' Permanent ROW, 50' Temp. ROW

For on-screen display:
Scale bar to be 4 inches (101.6mm wide)
Viewing distance is 19.7 inches (50 cm)

**Atlantic
Coast
Pipeline**®

ANST 06
Little Ravens Roost A

● Viewpoint Location ● Project Area



Easting Position (UTM - Zone 17):	2230807.3
Northing Position (UTM - Zone 17):	13782727.6
Elevation of Photopoint Position (AMSL):	2708.7
Height of Camera Above Ground (ft):	5.4
Date of Photography:	1 December 2016 at 12:39 PM
Orientation of View:	WNW
Horizontal Field of View:	124°
Vertical Field of View:	55°

NOTES:
Viewpoint location has been terrain-aligned using 1/9 and 1/3 arc degrees terrain, sourced from USGS and with a camera mounted gps unit.
Heights are above mean sea level.
Projection/Zone/Datum:
UTM ZONE 17

Photo Simulation Created Using
TrueView™ Technology
(Patent No.: US 8,184,906 B2)

Provided by

Truescape®

www.truescape.com

DATE	SHEET
05 January 2017	20



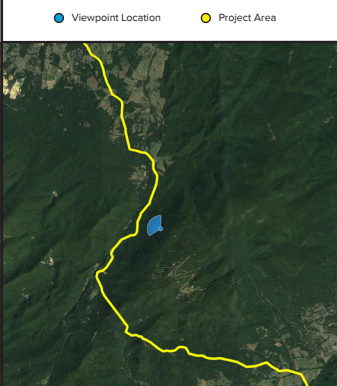
ANST 06 - Little Ravens Roost A, Looking West-Northwest - Existing View



ANST 06 - Little Ravens Roost A, Looking West-Northwest - Proposed View: 75' Permanent ROW, 50' Temp. ROW (5 Year Tree Growth)

For on-screen display:
Scale bar to be 4 inches (101.6mm wide)
Viewing distance is 19.7 inches (50 cm)

ANST 06
Little Ravens Roost A



Viewpoint Location	Project Area
Easting Position (UTM - Zone 17):	2230807.3
Northing Position (UTM - Zone 17):	13782727.6
Elevation of Photopoint Position (AMSL):	2708.7
Height of Camera Above Ground (ft):	5.4
Date of Photography:	1 December 2016 at 12:39 PM
Orientation of View:	WNW
Horizontal Field of View:	124°
Vertical Field of View:	55°

NOTES:
Viewpoint location has been terrain-aligned using 1/9 and 1/3 arc degrees terrain, sourced from USGS and with a camera mounted gps unit.
Heights are above mean sea level.
Projection/Zone/Datum:
UTM ZONE 17

Photo Simulation Created Using
TrueView™ Technology
(Patent No.: US 8,184,906 B2)

Provided by

Truescape

www.truescape.com

DATE	SHEET
05 January 2017	21



ANST 06 - Little Ravens Roost A, Looking West-Northwest - Existing View

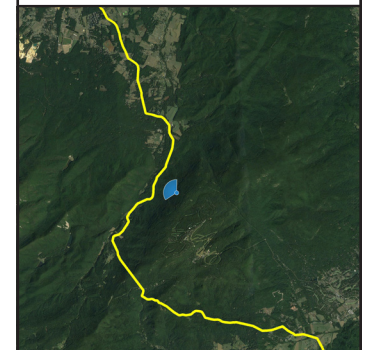


ANST 06 - Little Ravens Roost A, Looking West-Northwest - Proposed View: 75' Permanent ROW, 50' Temp. ROW (15-20 Year Tree Growth)

For on-screen display:
Scale bar to be 4 inches (101.6mm wide)
Viewing distance is 19.7 inches (50 cm)

ANST 06
Little Ravens Roost A

● Viewpoint Location ● Project Area



Easting Position (UTM - Zone 17):	2230807.3
Northing Position (UTM - Zone 17):	13782727.6
Elevation of Photopoint Position (AMSL):	2708.7
Height of Camera Above Ground (ft):	5.4
Date of Photography:	1 December 2016 at 12:39 PM
Orientation of View:	WNW
Horizontal Field of View:	124°
Vertical Field of View:	55°

NOTES:
Viewpoint location has been terrain-aligned using 1/9 and 1/3 arc degrees terrain, sourced from USGS and with a camera mounted gps unit.
Heights are above mean sea level.
Projection/Zone/Datum:
UTM ZONE 17

Photo Simulation Created Using
TrueView™ Technology
(Patent No.: US 8,184,906 B2)

Provided by

Truescape

www.truescape.com

DATE	SHEET
05 January 2017	22



ANST 07 - Sherando Valley B, Looking North - Existing View



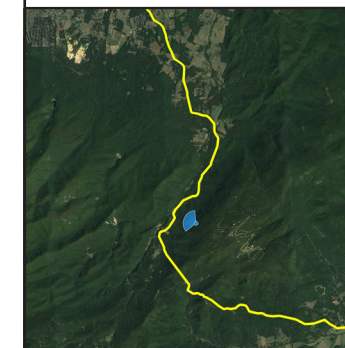
ANST 07 - Sherando Valley B, Looking North - Proposed View: 75' Permanent ROW, 50' Temp. ROW

For on-screen display:
Scale bar to be 4 inches (101.6mm wide)
Viewing distance is 19.7 inches (50 cm)

ANST 07

Sherando Valley B

Viewpoint Location Project Area



Easting Position (UTM - Zone 17):	2226843.8
Northing Position (UTM - Zone 17):	13778401.3
Elevation of Photopoint Position (AMSL):	2721.5
Height of Camera Above Ground (ft):	5.4
Date of Photography:	1 December 2016 at 01:29 PM
Orientation of View:	N
Horizontal Field of View:	124°
Vertical Field of View:	55°

NOTES:
Viewpoint location has been terrain-aligned using 1/9 and 1/3 arc degrees terrain, sourced from USGS and with a camera mounted gps unit.
Heights are above mean sea level.
Projection/Zone/Datum:
UTM ZONE 17

Photo Simulation Created Using
TrueView™ Technology
(Patent No.: US 8,184,906 B2)

Provided by

Truescape

www.truescape.com

DATE	SHEET
05 January 2017	23



ANST 07 - Sherando Valley B, Looking North - Existing View



ANST 07 - Sherando Valley B, Looking North - Indicative Overlay: 75' Permanent ROW, 50' Temp. ROW

For on-screen display:
Scale bar to be 4 inches (101.6mm wide)
Viewing distance is 19.7 inches (50 cm)

ANST 07
Sherando Valley B

Viewpoint Location Project Area



Easting Position (UTM - Zone 17):	2226843.8
Northing Position (UTM - Zone 17):	13778401.3
Elevation of Photopoint Position (AMSL):	2721.5
Height of Camera Above Ground (ft):	5.4
Date of Photography:	1 December 2016 at 01:29 PM
Orientation of View:	N
Horizontal Field of View:	124°
Vertical Field of View:	55°

NOTES:
Viewpoint location has been terrain-aligned using 1/9 and 1/3 arc degrees terrain, sourced from USGS and with a camera mounted gps unit.
Heights are above mean sea level.
Projection/Zone/Datum:
UTM ZONE 17

Photo Simulation Created Using
TrueView™ Technology
(Patent No.: US 8,184,906 B2)

Provided by

Truescape

www.truescape.com

DATE	SHEET
05 January 2017	24



ANST 07 - Sherando Valley B, Looking North - Existing View



ANST 07 - Sherando Valley B, Looking North - Proposed View: 75' Permanent ROW, 50' Temp. ROW (5 Year Tree Growth)

For on-screen display:
Scale bar to be 4 inches (101.6mm wide)
Viewing distance is 19.7 inches (50 cm)

ANST 07
Sherando Valley B

Viewpoint Location Project Area



Easting Position (UTM - Zone 17):	2226843.8
Northing Position (UTM - Zone 17):	13778401.3
Elevation of Photopoint Position (AMSL):	2721.5
Height of Camera Above Ground (ft):	5.4
Date of Photography:	1 December 2016 at 01:29 PM
Orientation of View:	N
Horizontal Field of View:	124°
Vertical Field of View:	55°

NOTES:
Viewpoint location has been terrain-aligned using 1/9 and 1/3 arc degrees terrain, sourced from USGS and with a camera mounted gps unit.
Heights are above mean sea level.
Projection/Zone/Datum:
UTM ZONE 17

Photo Simulation Created Using
TrueView™ Technology
(Patent No.: US 8,184,906 B2)

Provided by

Truescape

www.truescape.com

DATE 05 January 2017	SHEET 25
-------------------------	-------------



ANST 07 - Sherando Valley B, Looking North - Existing View



ANST 07 - Sherando Valley B, Looking North - Proposed View: 75' Permanent ROW, 50' Temp. ROW (15-20 Year Tree Growth)

For on-screen display:
Scale bar to be 4 inches (101.6mm wide)
Viewing distance is 19.7 inches (50 cm)



Easting Position (UTM - Zone 17):	2226843.8
Northing Position (UTM - Zone 17):	13778401.3
Elevation of Photopoint Position (AMSL):	2721.5
Height of Camera Above Ground (ft):	5.4
Date of Photography:	1 December 2016 at 01:29 PM
Orientation of View:	N
Horizontal Field of View:	124°
Vertical Field of View:	55°

NOTES:
Viewpoint location has been terrain-aligned using 1/9 and 1/3 arc degrees terrain, sourced from USGS and with a camera mounted gps unit.
Heights are above mean sea level.
Projection/Zone/Datum:
UTM ZONE 17

Photo Simulation Created Using
TrueView™ Technology
(Patent No.: US 8,184,906 B2)

Provided by

Truescape

www.truescape.com

DATE	SHEET
05 January 2017	26