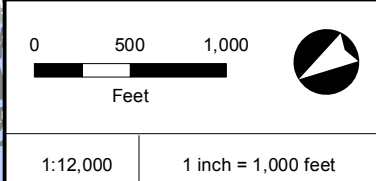


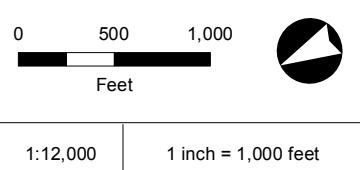
AaA: Altavista fine sandy loam, 0 to 3 percent slopes, rarely flooded	GtB: Gritney fine sandy loam, 2 to 6 percent slopes
BoB: Bonneau loamy fine sand, 0 to 4 percent slopes	GtC: Gritney fine sandy loam, 6 to 10 percent slopes
CbA: Chastain and Bibb soils, 0 to 1 percent slopes, frequently flooded	LyA: Lynchburg fine sandy loam, 0 to 2 percent slopes
EmA: Emporia fine sandy loam, 0 to 2 percent slopes	MrA: Marlboro fine sandy loam, 0 to 2 percent slopes
EmB: Emporia fine sandy loam, 2 to 6 percent slopes	RaA: Rains fine sandy loam, 0 to 1 percent slopes
EmC: Emporia fine sandy loam, 6 to 10 percent slopes	TtA: Tomotley fine sandy loam, 0 to 2 percent slopes, rarely flooded
ErB: Emporia-Urban land complex, 0 to 6 percent slopes	W: Water
GoA: Goldsboro fine sandy loam, 0 to 2 percent slopes	WnF: Winton fine sandy loam, 25 to 45 percent slopes



- Proposed Route
- SSURGO Soils
- River Basin Boundary

Atlantic Coast Pipeline
Soil Survey in Tar/Pamlico and Neuse River Basins
 Halifax County, North Carolina
 Centerline: AP-2
 Page 1 of 34

- | | |
|---|---|
| AaA: Altavista fine sandy loam, 0 to 3 percent slopes, rarely flooded | GyB2: Gritney sandy clay loam, 2 to 6 percent slopes, moderately eroded |
| BoB: Bonneau loamy fine sand, 0 to 4 percent slopes | LyA: Lynchburg fine sandy loam, 0 to 2 percent slopes |
| CbA: Chastain and Bibb soils, 0 to 1 percent slopes, frequently flooded | MrA: Marlboro fine sandy loam, 0 to 2 percent slopes |
| EmA: Emporia fine sandy loam, 0 to 2 percent slopes | MrB: Marlboro fine sandy loam, 2 to 6 percent slopes |
| EmB: Emporia fine sandy loam, 2 to 6 percent slopes | RaA: Rains fine sandy loam, 0 to 1 percent slopes |
| EmC: Emporia fine sandy loam, 6 to 10 percent slopes | SeA: Seabrook loamy sand, 0 to 2 percent slopes, rarely flooded |
| EwB: Emporia-Wedowee complex, 2 to 6 percent slopes | StA: State fine sandy loam, 0 to 2 percent slopes |
| GoA: Goldsboro fine sandy loam, 0 to 2 percent slopes | TtA: Tomotley fine sandy loam, 0 to 2 percent slopes, rarely flooded |
| GtB: Gritney fine sandy loam, 2 to 6 percent slopes | W: Water |
| GtC: Gritney fine sandy loam, 6 to 10 percent slopes | |

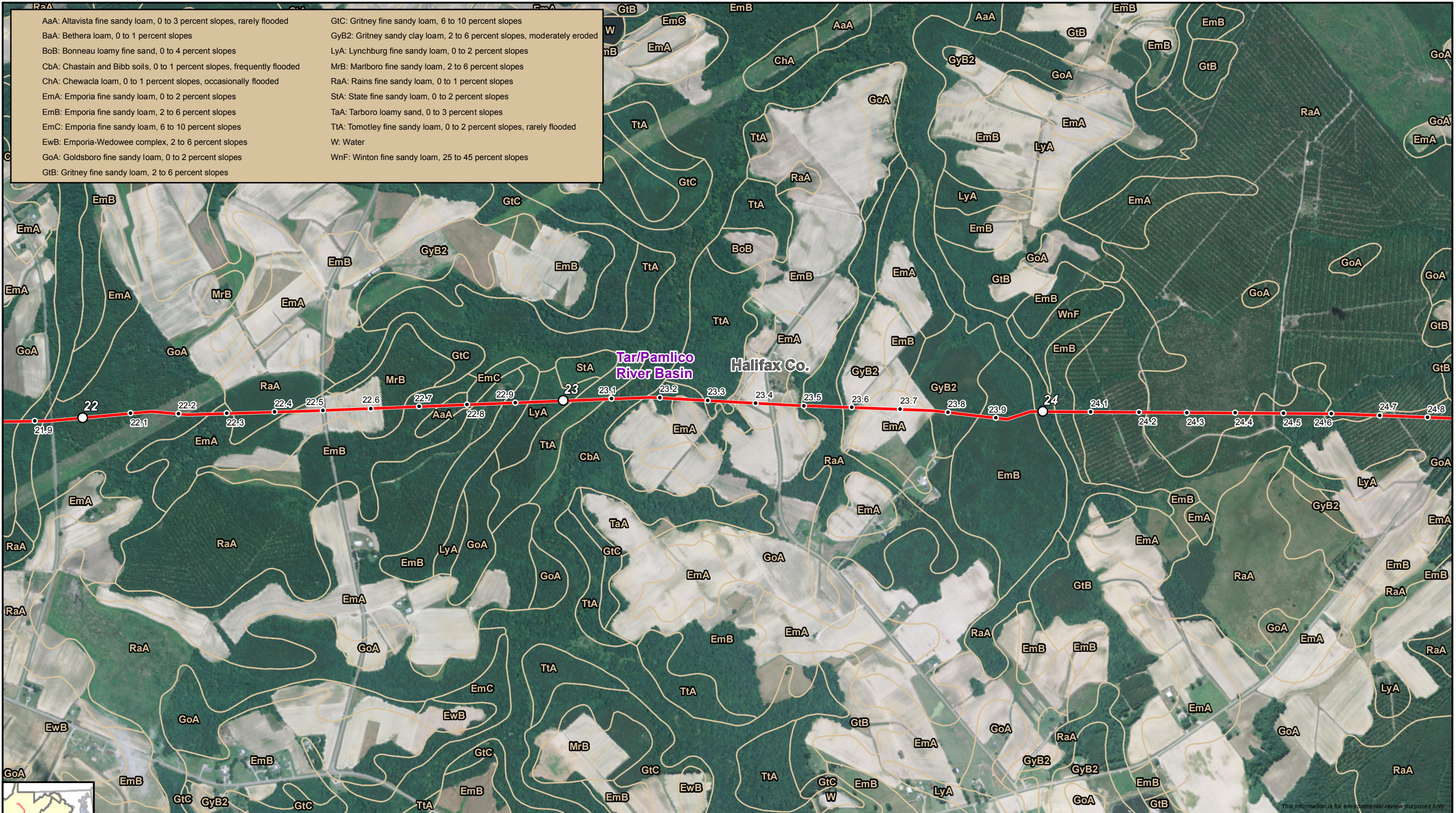


- Proposed Route
- SSURGO Soils
- River Basin Boundary

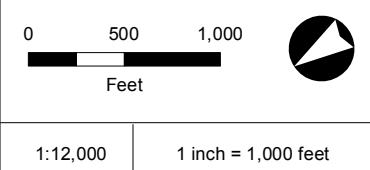


Atlantic Coast Pipeline
Soil Survey in Tar/Pamlico and Neuse River Basins
 Halifax County, North Carolina
 Centerline: AP-2
 Page 2 of 34





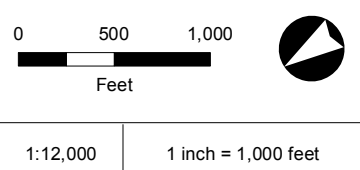
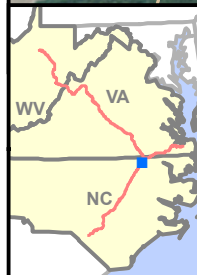
RaA: Altavista fine sandy loam, 0 to 3 percent slopes, rarely flooded	GtC: Gritney fine sandy loam, 6 to 10 percent slopes
BaA: Bethera loam, 0 to 1 percent slopes	GyB2: Gritney sandy clay loam, 2 to 6 percent slopes, moderately eroded
BoB: Bonneau loamy fine sand, 0 to 4 percent slopes	LyA: Lynchburg fine sandy loam, 0 to 2 percent slopes
CbA: Chastain and Bibb soils, 0 to 1 percent slopes, frequently flooded	MrB: Marlboro fine sandy loam, 2 to 6 percent slopes
ChA: Chewacla loam, 0 to 1 percent slopes, occasionally flooded	RaA: Rains fine sandy loam, 0 to 1 percent slopes
EmA: Emporia fine sandy loam, 0 to 2 percent slopes	StA: State fine sandy loam, 0 to 2 percent slopes
EmB: Emporia fine sandy loam, 2 to 6 percent slopes	TaA: Tarboro loamy sand, 0 to 3 percent slopes
EmC: Emporia fine sandy loam, 6 to 10 percent slopes	TtA: Tomotley fine sandy loam, 0 to 2 percent slopes, rarely flooded
EwB: Emporia-Wedowee complex, 2 to 6 percent slopes	W: Water
GoA: Goldsboro fine sandy loam, 0 to 2 percent slopes	WnF: Winton fine sandy loam, 25 to 45 percent slopes
GtB: Gritney fine sandy loam, 2 to 6 percent slopes	



- Proposed Route
- SSURGO Soils
- River Basin Boundary

Atlantic Coast Pipeline
Soil Survey in Tar/Pamlico and Neuse River Basins
 Halifax County, North Carolina
 Centerline: AP-2
 Page 3 of 34

AaA: Altavista fine sandy loam, 0 to 3 percent slopes, rarely flooded	GtB: Gritney fine sandy loam, 2 to 6 percent slopes
BoB: Bonneau loamy fine sand, 0 to 4 percent slopes	GtC: Gritney fine sandy loam, 6 to 10 percent slopes
CbA: Chastain and Bibb soils, 0 to 1 percent slopes, frequently flooded	GyB2: Gritney sandy clay loam, 2 to 6 percent slopes, moderately eroded
CwA: Chewacla and Wehadkee soils, 0 to 1 percent slopes, frequently flooded	LyA: Lynchburg fine sandy loam, 0 to 2 percent slopes
EmA: Emporia fine sandy loam, 0 to 2 percent slopes	MrA: Marlboro fine sandy loam, 0 to 2 percent slopes
EmB: Emporia fine sandy loam, 2 to 6 percent slopes	MrB: Marlboro fine sandy loam, 2 to 6 percent slopes
EwB: Emporia-Wedowee complex, 2 to 6 percent slopes	RaA: Rains fine sandy loam, 0 to 1 percent slopes
GoA: Goldsboro fine sandy loam, 0 to 2 percent slopes	TtA: Tomotley fine sandy loam, 0 to 2 percent slopes, rarely flooded

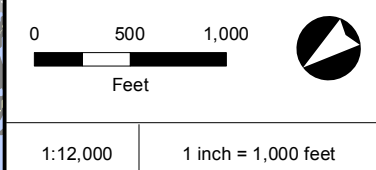
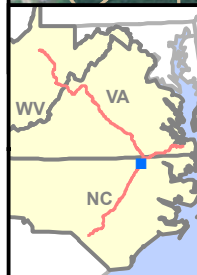


- Proposed Route
- SSURGO Soils
- River Basin Boundary



Atlantic Coast Pipeline
Soil Survey in Tar/Pamlico and Neuse River Basins
 Halifax County, North Carolina
 Centerline: AP-2
 Page 4 of 34

BaA: Bethera loam, 0 to 1 percent slopes	GyB2: Gritney sandy clay loam, 2 to 6 percent slopes, moderately eroded
BoB: Bonneau loamy fine sand, 0 to 4 percent slopes	LyA: Lynchburg fine sandy loam, 0 to 2 percent slopes
CbA: Chastain and Bibb soils, 0 to 1 percent slopes, frequently flooded	MrA: Marlboro fine sandy loam, 0 to 2 percent slopes
EmA: Emporia fine sandy loam, 0 to 2 percent slopes	MrB: Marlboro fine sandy loam, 2 to 6 percent slopes
EmB: Emporia fine sandy loam, 2 to 6 percent slopes	RaA: Rains fine sandy loam, 0 to 1 percent slopes
EwB: Emporia-Wedowee complex, 2 to 6 percent slopes	TtA: Tomotley fine sandy loam, 0 to 2 percent slopes, rarely flooded
GoA: Goldsboro fine sandy loam, 0 to 2 percent slopes	Ud: Udorthents, loamy
GtC: Gritney fine sandy loam, 6 to 10 percent slopes	W: Water

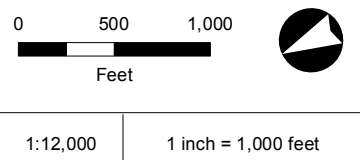
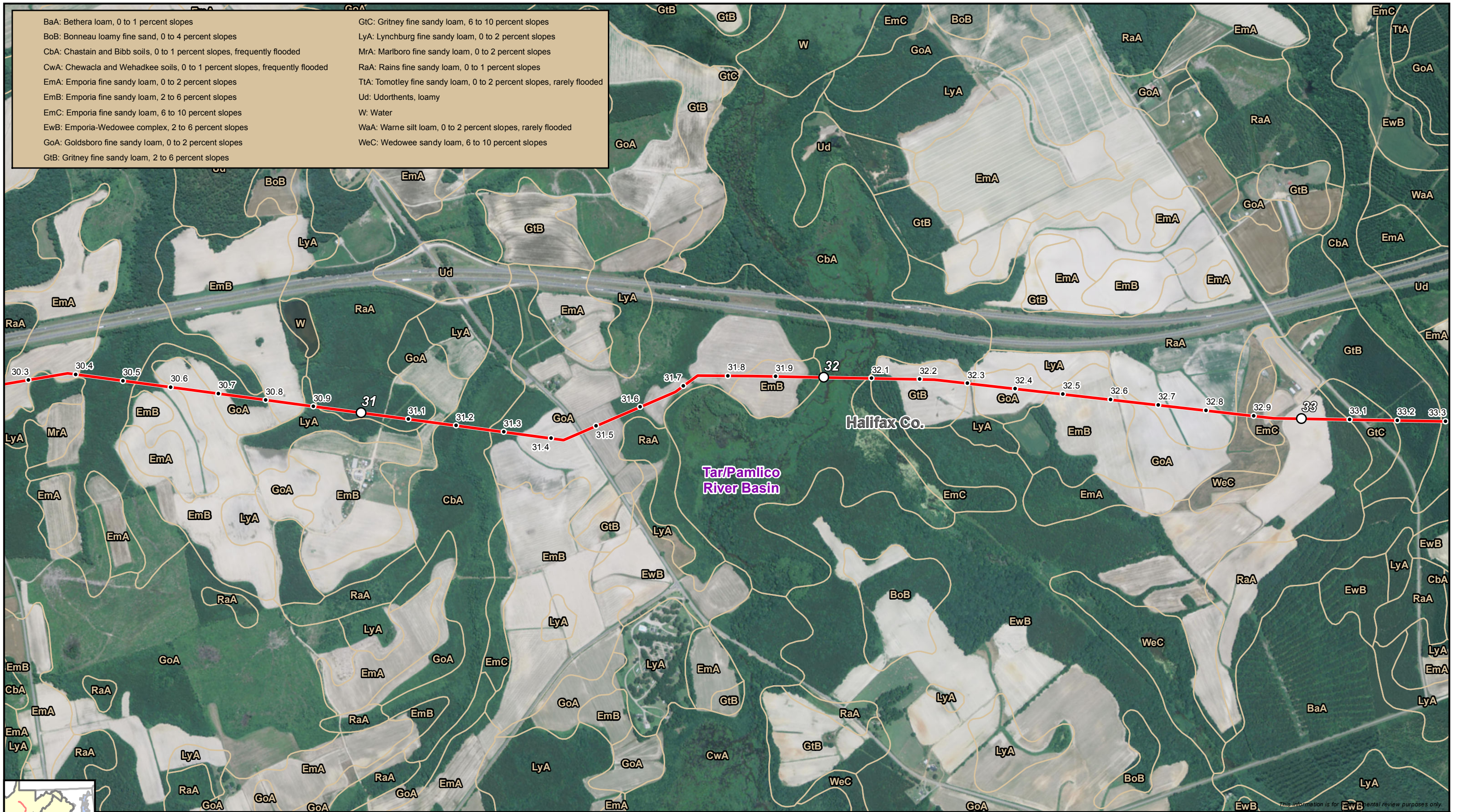


- Proposed Route
- SSURGO Soils
- River Basin Boundary



Atlantic Coast Pipeline
Soil Survey in Tar/Pamlico and Neuse River Basins
 Halifax County, North Carolina
 Centerline: AP-2
 Page 5 of 34

- | | |
|---|--|
| BaA: Bethera loam, 0 to 1 percent slopes | GtC: Gritney fine sandy loam, 6 to 10 percent slopes |
| BoB: Bonneau loamy fine sand, 0 to 4 percent slopes | LyA: Lynchburg fine sandy loam, 0 to 2 percent slopes |
| CbA: Chastain and Bibb soils, 0 to 1 percent slopes, frequently flooded | MrA: Marlboro fine sandy loam, 0 to 2 percent slopes |
| CwA: Chewacla and Wehadkee soils, 0 to 1 percent slopes, frequently flooded | RaA: Rains fine sandy loam, 0 to 1 percent slopes |
| EmA: Emporia fine sandy loam, 0 to 2 percent slopes | TtA: Tomotley fine sandy loam, 0 to 2 percent slopes, rarely flooded |
| EmB: Emporia fine sandy loam, 2 to 6 percent slopes | Ud: Udorthents, loamy |
| EmC: Emporia fine sandy loam, 6 to 10 percent slopes | W: Water |
| EwB: Emporia-Wedowee complex, 2 to 6 percent slopes | WaA: Warne silt loam, 0 to 2 percent slopes, rarely flooded |
| GoA: Goldsboro fine sandy loam, 0 to 2 percent slopes | WeC: Wedowee sandy loam, 6 to 10 percent slopes |
| GtB: Gritney fine sandy loam, 2 to 6 percent slopes | |



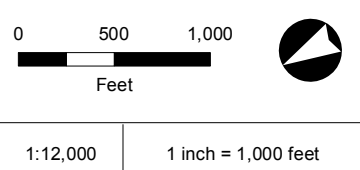
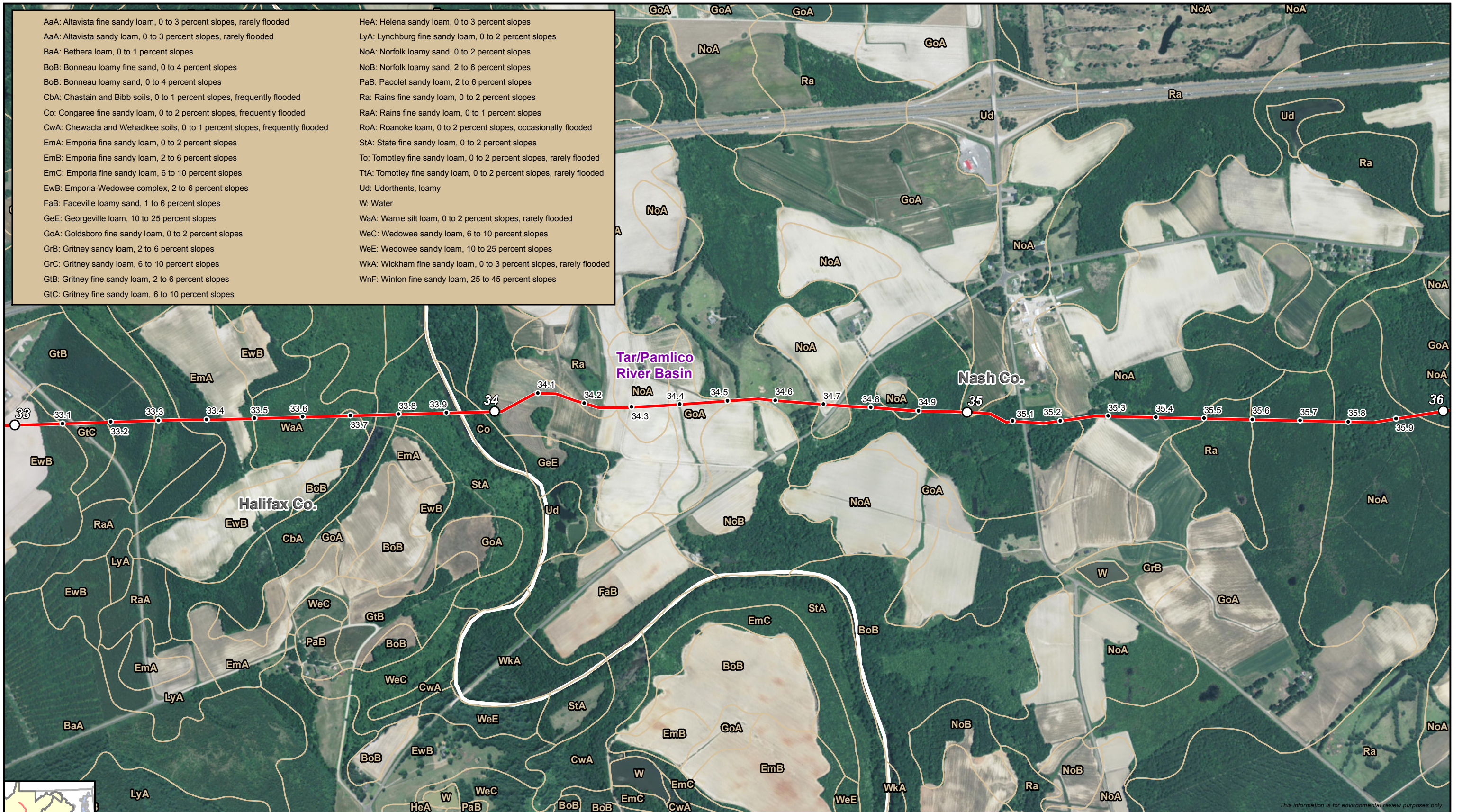
- Proposed Route
- SSURGO Soils
- River Basin Boundary



Atlantic Coast Pipeline
Soil Survey in Tar/Pamlico and Neuse River Basins
 Halifax County, North Carolina
 Centerline: AP-2
 Page 6 of 34



- AaA: Altavista fine sandy loam, 0 to 3 percent slopes, rarely flooded
- AaA: Altavista sandy loam, 0 to 3 percent slopes, rarely flooded
- BaA: Bethera loam, 0 to 1 percent slopes
- BoB: Bonneau loamy fine sand, 0 to 4 percent slopes
- BoB: Bonneau loamy sand, 0 to 4 percent slopes
- CbA: Chastain and Bibb soils, 0 to 1 percent slopes, frequently flooded
- Co: Congaree fine sandy loam, 0 to 2 percent slopes, frequently flooded
- CwA: Chewacla and Wehadkee soils, 0 to 1 percent slopes, frequently flooded
- EmA: Emporia fine sandy loam, 0 to 2 percent slopes
- EmB: Emporia fine sandy loam, 2 to 6 percent slopes
- EmC: Emporia fine sandy loam, 6 to 10 percent slopes
- EwB: Emporia-Wedowee complex, 2 to 6 percent slopes
- FaB: Faceville loamy sand, 1 to 6 percent slopes
- GeE: Georgeville loam, 10 to 25 percent slopes
- GoA: Goldsboro fine sandy loam, 0 to 2 percent slopes
- GrB: Gritney sandy loam, 2 to 6 percent slopes
- GrC: Gritney sandy loam, 6 to 10 percent slopes
- GtB: Gritney fine sandy loam, 2 to 6 percent slopes
- GtC: Gritney fine sandy loam, 6 to 10 percent slopes
- HeA: Helena sandy loam, 0 to 3 percent slopes
- LyA: Lynchburg fine sandy loam, 0 to 2 percent slopes
- NoA: Norfolk loamy sand, 0 to 2 percent slopes
- NoB: Norfolk loamy sand, 2 to 6 percent slopes
- PaB: Paolet sandy loam, 2 to 6 percent slopes
- Ra: Rains fine sandy loam, 0 to 2 percent slopes
- RaA: Rains fine sandy loam, 0 to 1 percent slopes
- RoA: Roanoke loam, 0 to 2 percent slopes, occasionally flooded
- StA: State fine sandy loam, 0 to 2 percent slopes
- To: Tomotley fine sandy loam, 0 to 2 percent slopes, rarely flooded
- TtA: Tomotley fine sandy loam, 0 to 2 percent slopes, rarely flooded
- Ud: Udorthents, loamy
- W: Water
- WaA: Warne silt loam, 0 to 2 percent slopes, rarely flooded
- WeC: Wedowee sandy loam, 6 to 10 percent slopes
- WeE: Wedowee sandy loam, 10 to 25 percent slopes
- WkA: Wickham fine sandy loam, 0 to 3 percent slopes, rarely flooded
- WnF: Winton fine sandy loam, 25 to 45 percent slopes



- Proposed Route
- SSURGO Soils
- River Basin Boundary



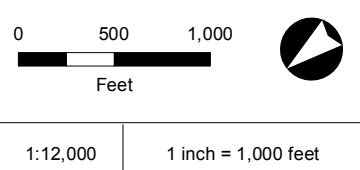
Atlantic Coast Pipeline
Soil Survey in Tar/Pamlico and Neuse River Basins
 Nash County, North Carolina
 Centerline: AP-2
 Page 7 of 34

This information is for environmental review purposes only.





Bb: Bibb loam, 0 to 2 percent slopes, frequently flooded
 GoA: Goldsboro fine sandy loam, 0 to 2 percent slopes
 GrB: Gritney sandy loam, 2 to 6 percent slopes
 NaC: Nankin sandy loam, 2 to 10 percent slopes
 NoA: Norfolk loamy sand, 0 to 2 percent slopes
 NoB: Norfolk loamy sand, 2 to 6 percent slopes
 NpB: Norfolk-Wedowee complex, 2 to 6 percent slopes
 Ra: Rains fine sandy loam, 0 to 2 percent slopes



- Proposed Route
- SSURGO Soils
- River Basin Boundary

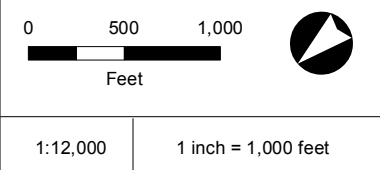
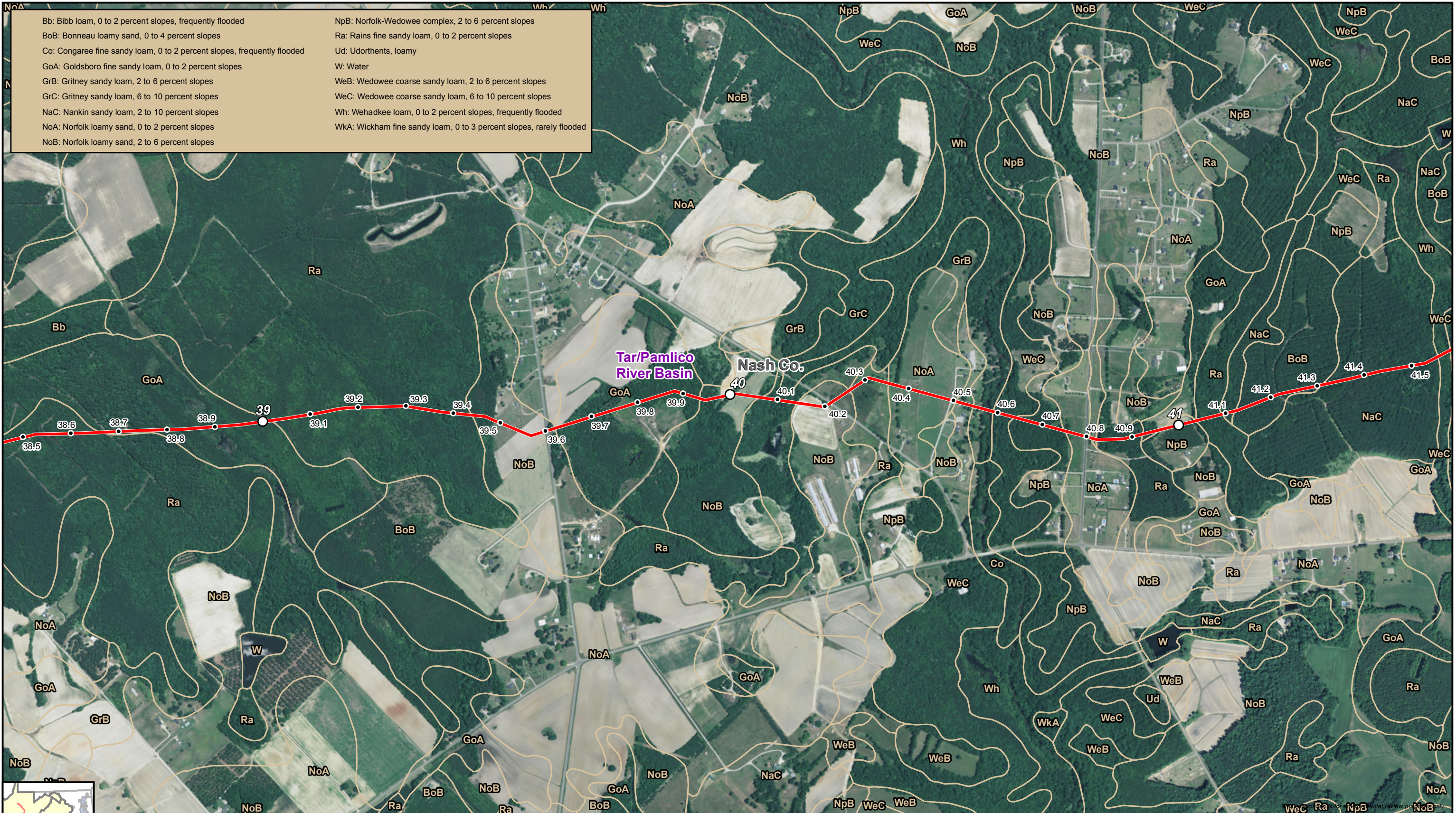


Atlantic Coast Pipeline
Soil Survey in Tar/Pamlico and Neuse River Basins
 Nash County, North Carolina
 Centerline: AP-2
 Page 8 of 34



This information is for environmental review purposes only.

Bb: Bibb loam, 0 to 2 percent slopes, frequently flooded	NpB: Norfolk-Wedowee complex, 2 to 6 percent slopes
BoB: Bonneau loamy sand, 0 to 4 percent slopes	Ra: Rains fine sandy loam, 0 to 2 percent slopes
Co: Congaree fine sandy loam, 0 to 2 percent slopes, frequently flooded	Ud: Udorthents, loamy
GoA: Goldsboro fine sandy loam, 0 to 2 percent slopes	W: Water
GrB: Gritney sandy loam, 2 to 6 percent slopes	WeB: Wedowee coarse sandy loam, 2 to 6 percent slopes
GrC: Gritney sandy loam, 6 to 10 percent slopes	WeC: Wedowee coarse sandy loam, 6 to 10 percent slopes
NaC: Nankin sandy loam, 2 to 10 percent slopes	Wh: Wehadkee loam, 0 to 2 percent slopes, frequently flooded
NoA: Norfolk loamy sand, 0 to 2 percent slopes	WkA: Wickham fine sandy loam, 0 to 3 percent slopes, rarely flooded
NoB: Norfolk loamy sand, 2 to 6 percent slopes	



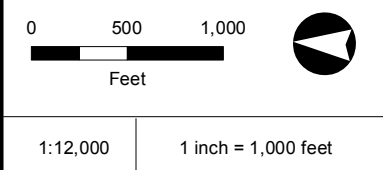
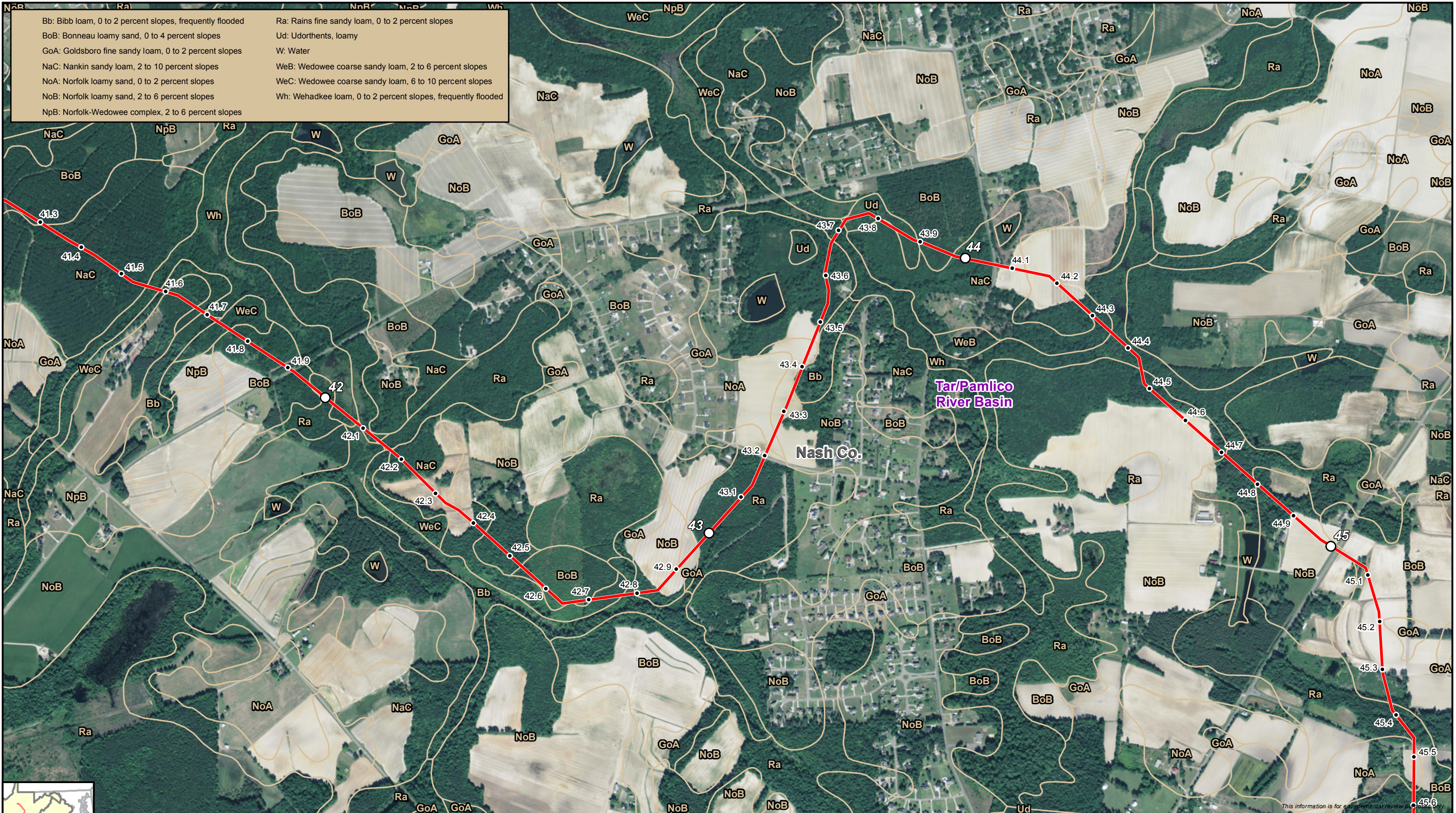
- Proposed Route
- SSURGO Soils
- River Basin Boundary



Atlantic Coast Pipeline
Soil Survey in Tar/Pamlico and Neuse River Basins
 Nash County, North Carolina
 Centerline: AP-2
 Page 9 of 34



Bb: Bibb loam, 0 to 2 percent slopes, frequently flooded	Ra: Rains fine sandy loam, 0 to 2 percent slopes
BoB: Bonneau loamy sand, 0 to 4 percent slopes	Ud: Udorthents, loamy
GoA: Goldsboro fine sandy loam, 0 to 2 percent slopes	W: Water
NaC: Nankin sandy loam, 2 to 10 percent slopes	WeB: Wedowee coarse sandy loam, 2 to 6 percent slopes
NoA: Norfolk loamy sand, 0 to 2 percent slopes	WeC: Wedowee coarse sandy loam, 6 to 10 percent slopes
NoB: Norfolk loamy sand, 2 to 6 percent slopes	Wh: Wehadkee loam, 0 to 2 percent slopes, frequently flooded
NpB: Norfolk-Wedowee complex, 2 to 6 percent slopes	



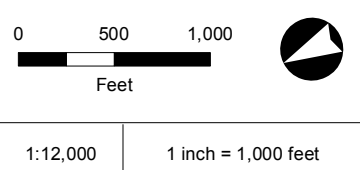
- Proposed Route
- SSURGO Soils
- River Basin Boundary



Atlantic Coast Pipeline
Soil Survey in Tar/Pamlico and Neuse River Basins
 Nash County, North Carolina
 Centerline: AP-2
 Page 10 of 34



AaA: Altavista sandy loam, 0 to 3 percent slopes, rarely flooded	NnC: Nason loam, 6 to 10 percent slopes
Bb: Bibb loam, 0 to 2 percent slopes, frequently flooded	NoA: Norfolk loamy sand, 0 to 2 percent slopes
BoB: Bonneau loamy sand, 0 to 4 percent slopes	NoB: Norfolk loamy sand, 2 to 6 percent slopes
GeB: Georgeville loam, 2 to 6 percent slopes	NrB: Norfolk, Georgeville, and Faceville soils, 2 to 8 percent slopes
GeC: Georgeville loam, 6 to 10 percent slopes	NuB: Norfolk-Urban land complex, 0 to 6 percent slopes
GeE: Georgeville loam, 10 to 25 percent slopes	Ra: Rains fine sandy loam, 0 to 2 percent slopes
GoA: Goldsboro fine sandy loam, 0 to 2 percent slopes	To: Tomotley fine sandy loam, 0 to 2 percent slopes, rarely flooded
GrB: Gritney sandy loam, 2 to 6 percent slopes	Ud: Udorthents, loamy
GrC: Gritney sandy loam, 6 to 10 percent slopes	W: Water
Me: Meggett loam, 0 to 2 percent slopes, frequently flooded	WeB: Wedowee coarse sandy loam, 2 to 6 percent slopes
NaC: Nankin sandy loam, 2 to 10 percent slopes	Wh: Wehadkee loam, 0 to 2 percent slopes, frequently flooded
NnB: Nason loam, 2 to 6 percent slopes	



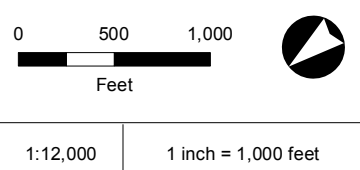
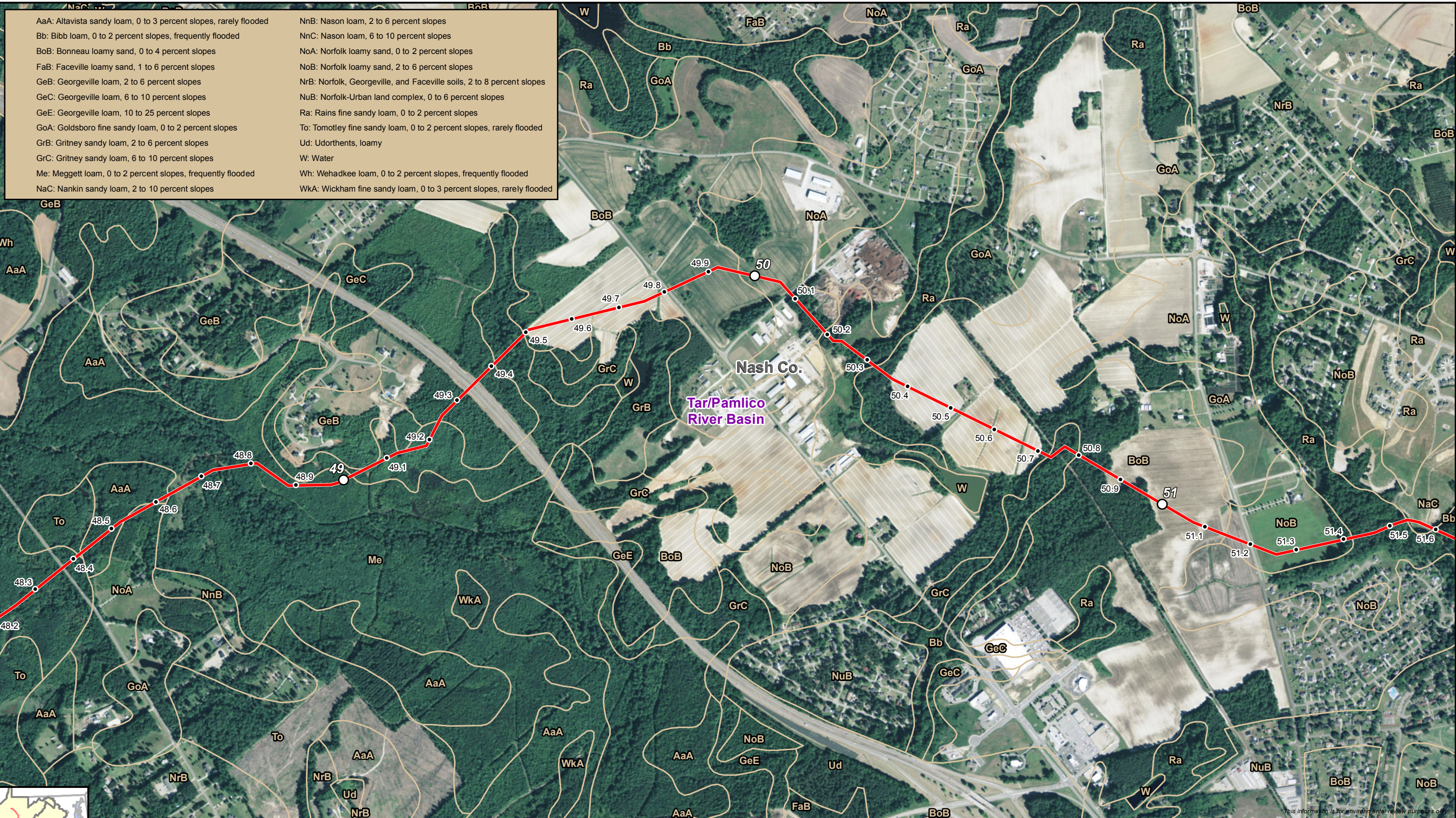
- Proposed Route
- SSURGO Soils
- River Basin Boundary



Atlantic Coast Pipeline
Soil Survey in Tar/Pamlico and Neuse River Basins
 Nash County, North Carolina
 Centerline: AP-2
 Page 11 of 34



- AaA: Altavista sandy loam, 0 to 3 percent slopes, rarely flooded
- Bb: Bibb loam, 0 to 2 percent slopes, frequently flooded
- BoB: Bonneau loamy sand, 0 to 4 percent slopes
- FaB: Faceville loamy sand, 1 to 6 percent slopes
- GeB: Georgeville loam, 2 to 6 percent slopes
- GeC: Georgeville loam, 6 to 10 percent slopes
- GeE: Georgeville loam, 10 to 25 percent slopes
- GoA: Goldsboro fine sandy loam, 0 to 2 percent slopes
- GrB: Gritney sandy loam, 2 to 6 percent slopes
- GrC: Gritney sandy loam, 6 to 10 percent slopes
- Me: Meggett loam, 0 to 2 percent slopes, frequently flooded
- NaC: Nankin sandy loam, 2 to 10 percent slopes
- NnB: Nason loam, 2 to 6 percent slopes
- NnC: Nason loam, 6 to 10 percent slopes
- NoA: Norfolk loamy sand, 0 to 2 percent slopes
- NoB: Norfolk loamy sand, 2 to 6 percent slopes
- NrB: Norfolk, Georgeville, and Faceville soils, 2 to 8 percent slopes
- NuB: Norfolk-Urban land complex, 0 to 6 percent slopes
- Ra: Rains fine sandy loam, 0 to 2 percent slopes
- To: Tomotley fine sandy loam, 0 to 2 percent slopes, rarely flooded
- Ud: Udorthents, loamy
- W: Water
- Wh: Wehadkee loam, 0 to 2 percent slopes, frequently flooded
- WkA: Wickham fine sandy loam, 0 to 3 percent slopes, rarely flooded



- Proposed Route
- SSURGO Soils
- River Basin Boundary

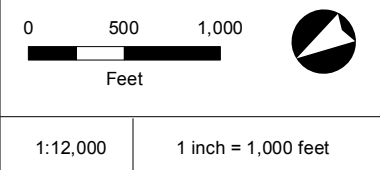
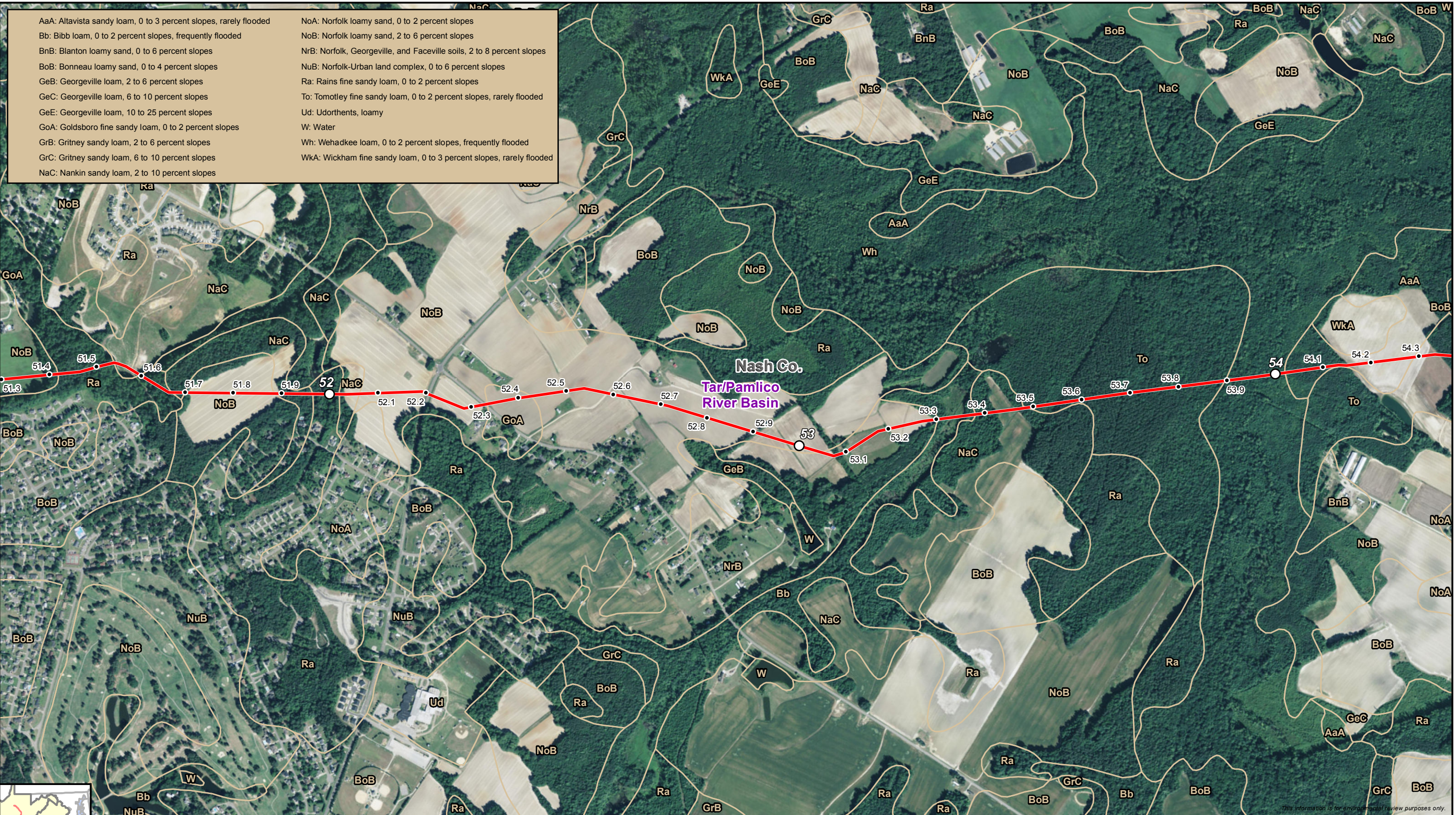


Atlantic Coast Pipeline
Soil Survey in Tar/Pamlico and Neuse River Basins
 Nash County, North Carolina
 Centerline: AP-2
 Page 12 of 34



DRAWN BY: JPB

AaA: Altavista sandy loam, 0 to 3 percent slopes, rarely flooded	NoA: Norfolk loamy sand, 0 to 2 percent slopes
Bb: Bibb loam, 0 to 2 percent slopes, frequently flooded	NoB: Norfolk loamy sand, 2 to 6 percent slopes
BnB: Blanton loamy sand, 0 to 6 percent slopes	NrB: Norfolk, Georgeville, and Faceville soils, 2 to 8 percent slopes
BoB: Bonneau loamy sand, 0 to 4 percent slopes	NuB: Norfolk-Urban land complex, 0 to 6 percent slopes
GeB: Georgeville loam, 2 to 6 percent slopes	Ra: Rains fine sandy loam, 0 to 2 percent slopes
GeC: Georgeville loam, 6 to 10 percent slopes	To: Tomotley fine sandy loam, 0 to 2 percent slopes, rarely flooded
GeE: Georgeville loam, 10 to 25 percent slopes	Ud: Udorthents, loamy
GoA: Goldsboro fine sandy loam, 0 to 2 percent slopes	W: Water
GrB: Gritney sandy loam, 2 to 6 percent slopes	Wh: Wehadkee loam, 0 to 2 percent slopes, frequently flooded
GrC: Gritney sandy loam, 6 to 10 percent slopes	WkA: Wickham fine sandy loam, 0 to 3 percent slopes, rarely flooded
NaC: Nankin sandy loam, 2 to 10 percent slopes	



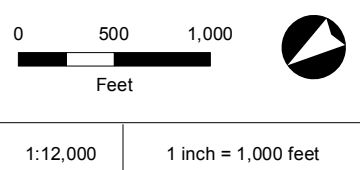
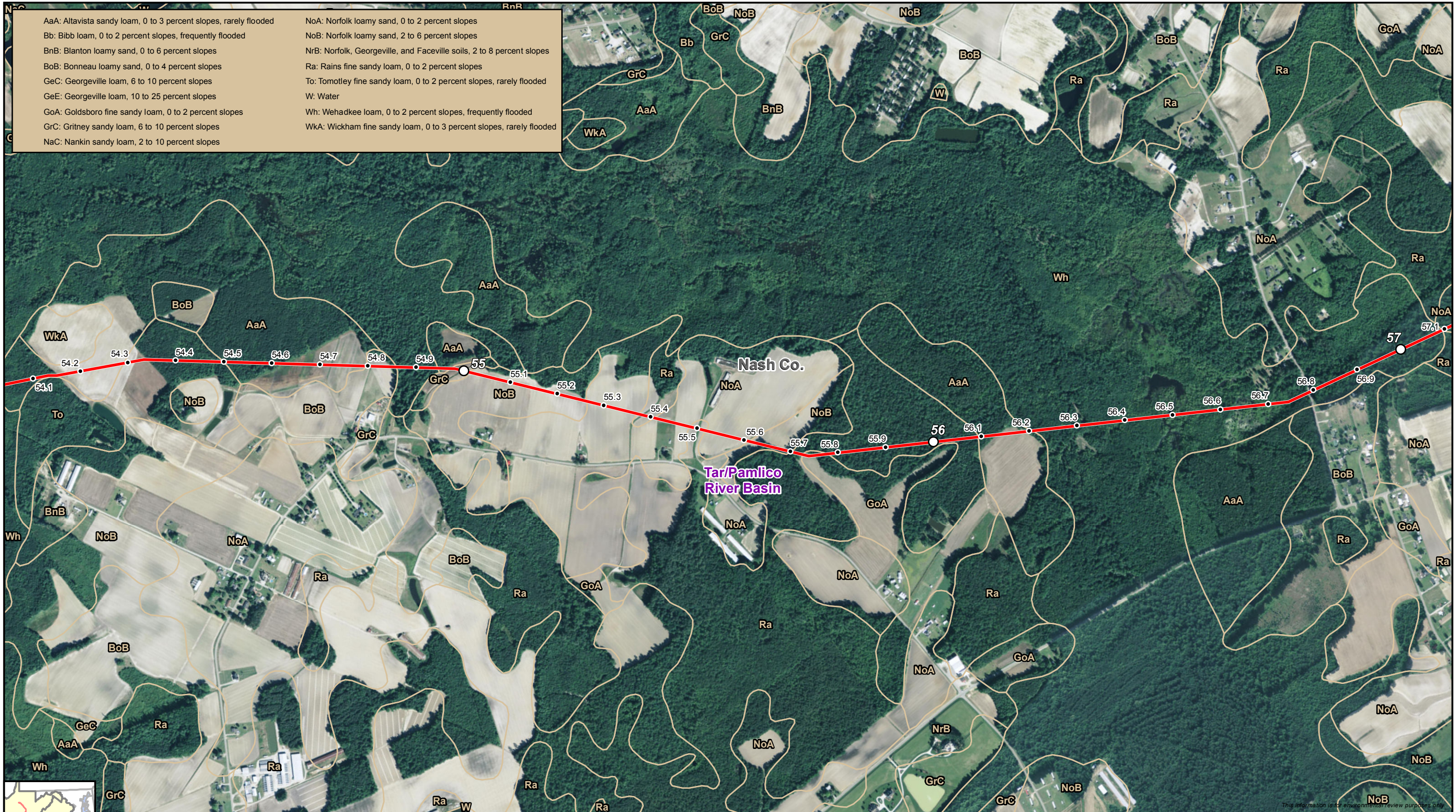
- Proposed Route
- SSURGO Soils
- River Basin Boundary



Atlantic Coast Pipeline
Soil Survey in Tar/Pamlico and Neuse River Basins
 Nash County, North Carolina
 Centerline: AP-2
 Page 13 of 34



AaA: Altavista sandy loam, 0 to 3 percent slopes, rarely flooded	NoA: Norfolk loamy sand, 0 to 2 percent slopes
Bb: Bibb loam, 0 to 2 percent slopes, frequently flooded	NoB: Norfolk loamy sand, 2 to 6 percent slopes
BnB: Blanton loamy sand, 0 to 6 percent slopes	NrB: Norfolk, Georgeville, and Faceville soils, 2 to 8 percent slopes
BoB: Bonneau loamy sand, 0 to 4 percent slopes	Ra: Rains fine sandy loam, 0 to 2 percent slopes
GeC: Georgeville loam, 6 to 10 percent slopes	To: Tomotley fine sandy loam, 0 to 2 percent slopes, rarely flooded
GeE: Georgeville loam, 10 to 25 percent slopes	W: Water
GoA: Goldsboro fine sandy loam, 0 to 2 percent slopes	Wh: Wehadkee loam, 0 to 2 percent slopes, frequently flooded
GrC: Gritney sandy loam, 6 to 10 percent slopes	WkA: Wickham fine sandy loam, 0 to 3 percent slopes, rarely flooded
NnC: Nankin sandy loam, 2 to 10 percent slopes	



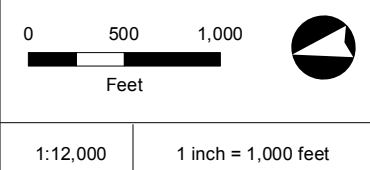
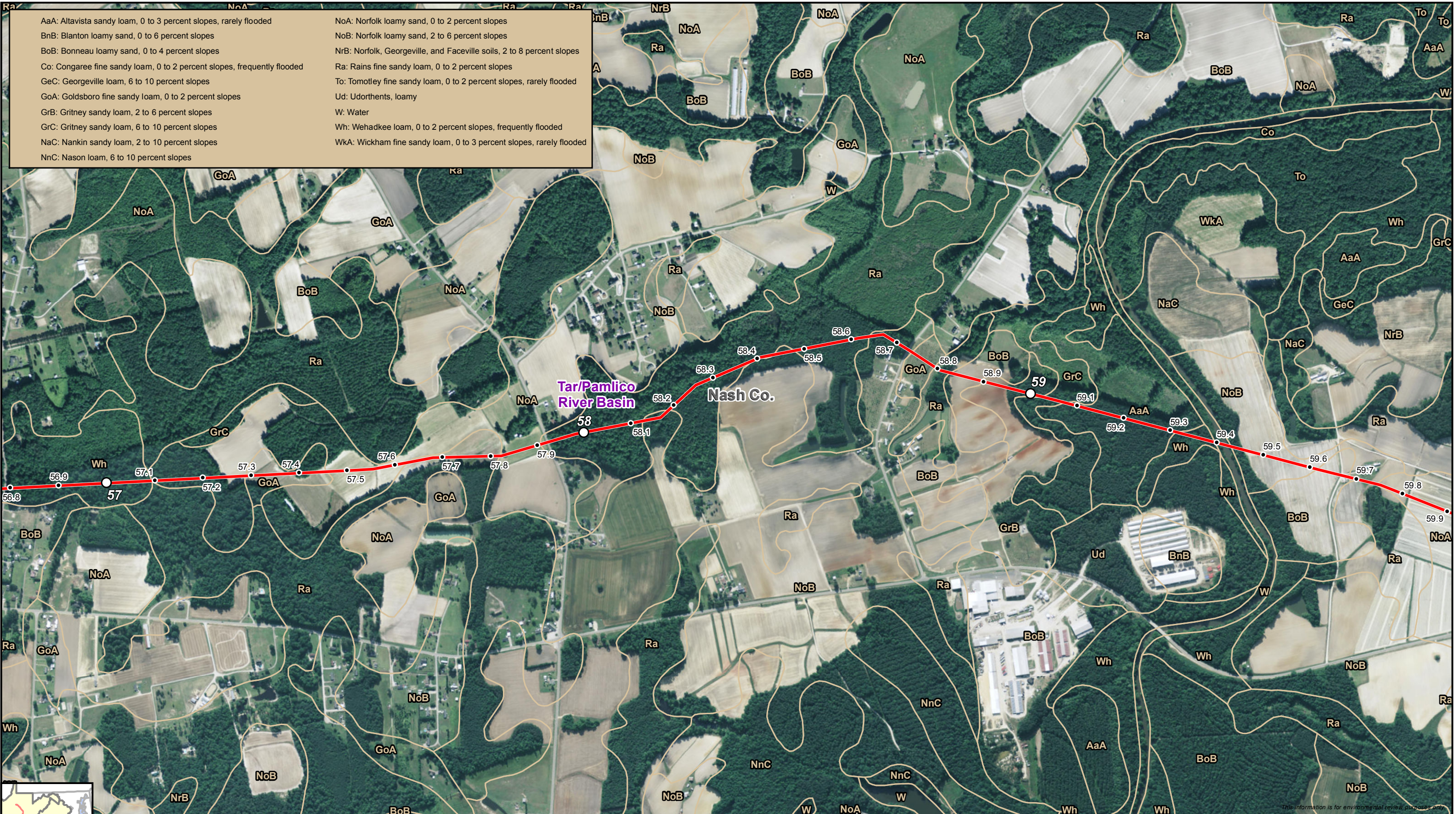
- Proposed Route
- SSURGO Soils
- River Basin Boundary



Atlantic Coast Pipeline
Soil Survey in Tar/Pamlico and Neuse River Basins
 Nash County, North Carolina
 Centerline: AP-2
 Page 14 of 34



AaA: Altavista sandy loam, 0 to 3 percent slopes, rarely flooded	NoA: Norfolk loamy sand, 0 to 2 percent slopes
BnB: Blanton loamy sand, 0 to 6 percent slopes	NoB: Norfolk loamy sand, 2 to 6 percent slopes
BoB: Bonneau loamy sand, 0 to 4 percent slopes	NrB: Norfolk, Georgeville, and Faceville soils, 2 to 8 percent slopes
Co: Congaree fine sandy loam, 0 to 2 percent slopes, frequently flooded	Ra: Rains fine sandy loam, 0 to 2 percent slopes
GeC: Georgeville loam, 6 to 10 percent slopes	To: Tomotley fine sandy loam, 0 to 2 percent slopes, rarely flooded
GoA: Goldsboro fine sandy loam, 0 to 2 percent slopes	Ud: Udorthents, loamy
GrB: Gritney sandy loam, 2 to 6 percent slopes	W: Water
GrC: Gritney sandy loam, 6 to 10 percent slopes	Wh: Wehadkee loam, 0 to 2 percent slopes, frequently flooded
NaC: Nankin sandy loam, 2 to 10 percent slopes	WkA: Wickham fine sandy loam, 0 to 3 percent slopes, rarely flooded
NnC: Nason loam, 6 to 10 percent slopes	

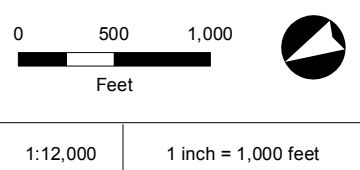
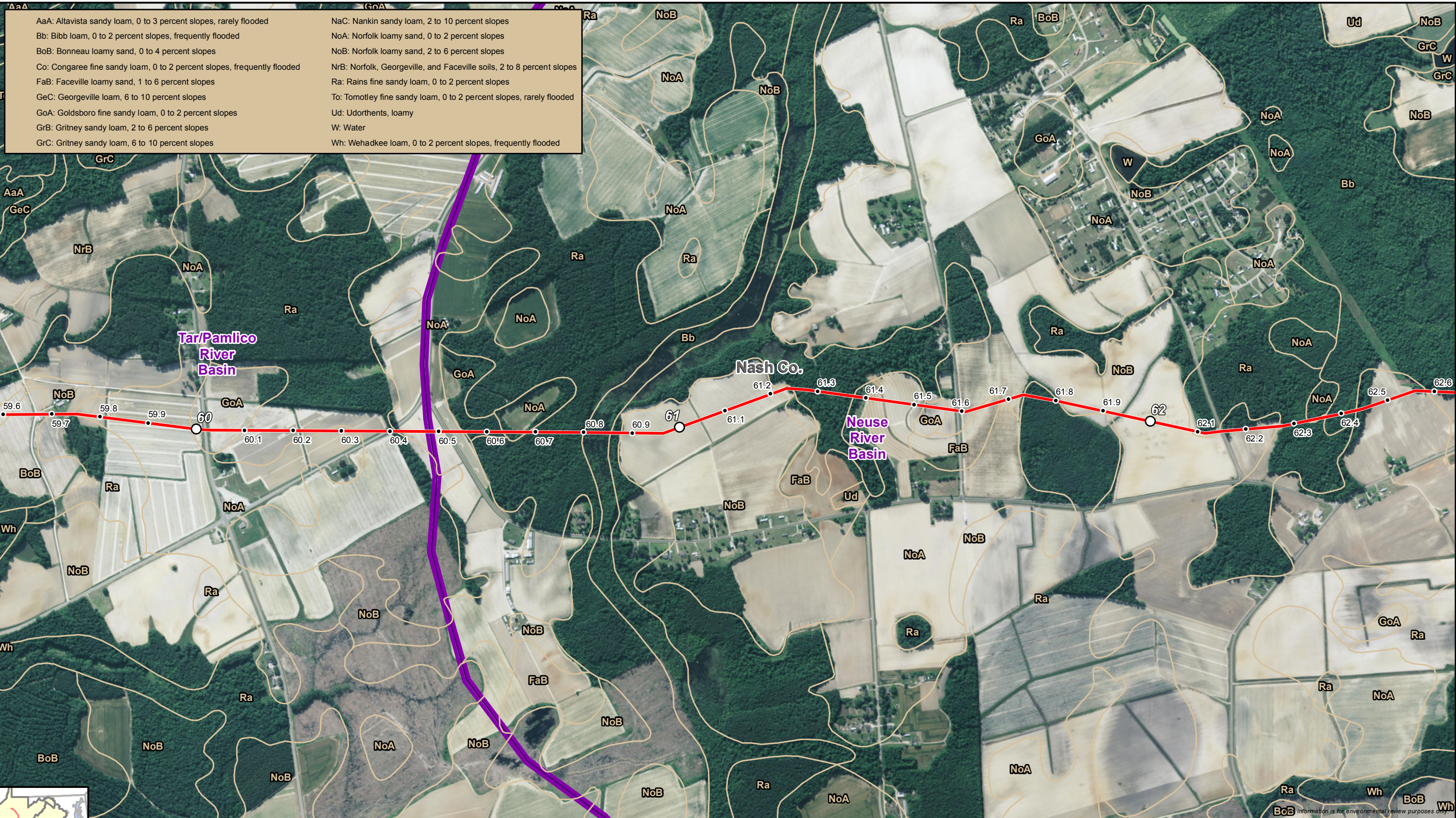


- Proposed Route
- SSURGO Soils
- River Basin Boundary



Atlantic Coast Pipeline
Soil Survey in Tar/Pamlico and Neuse River Basins
 Nash County, North Carolina
 Centerline: AP-2
 Page 15 of 34

AaA: Altavista sandy loam, 0 to 3 percent slopes, rarely flooded	NaC: Nankin sandy loam, 2 to 10 percent slopes
Bb: Bibb loam, 0 to 2 percent slopes, frequently flooded	NoA: Norfolk loamy sand, 0 to 2 percent slopes
BoB: Bonneau loamy sand, 0 to 4 percent slopes	NoB: Norfolk loamy sand, 2 to 6 percent slopes
Co: Congaree fine sandy loam, 0 to 2 percent slopes, frequently flooded	NrB: Norfolk, Georgeville, and Faceville soils, 2 to 8 percent slopes
FaB: Faceville loamy sand, 1 to 6 percent slopes	Ra: Rains fine sandy loam, 0 to 2 percent slopes
GeC: Georgeville loam, 6 to 10 percent slopes	To: Tomotley fine sandy loam, 0 to 2 percent slopes, rarely flooded
GoA: Goldsboro fine sandy loam, 0 to 2 percent slopes	Ud: Udorthents, loamy
GrB: Gritney sandy loam, 2 to 6 percent slopes	W: Water
GrC: Gritney sandy loam, 6 to 10 percent slopes	Wh: Wehadkee loam, 0 to 2 percent slopes, frequently flooded



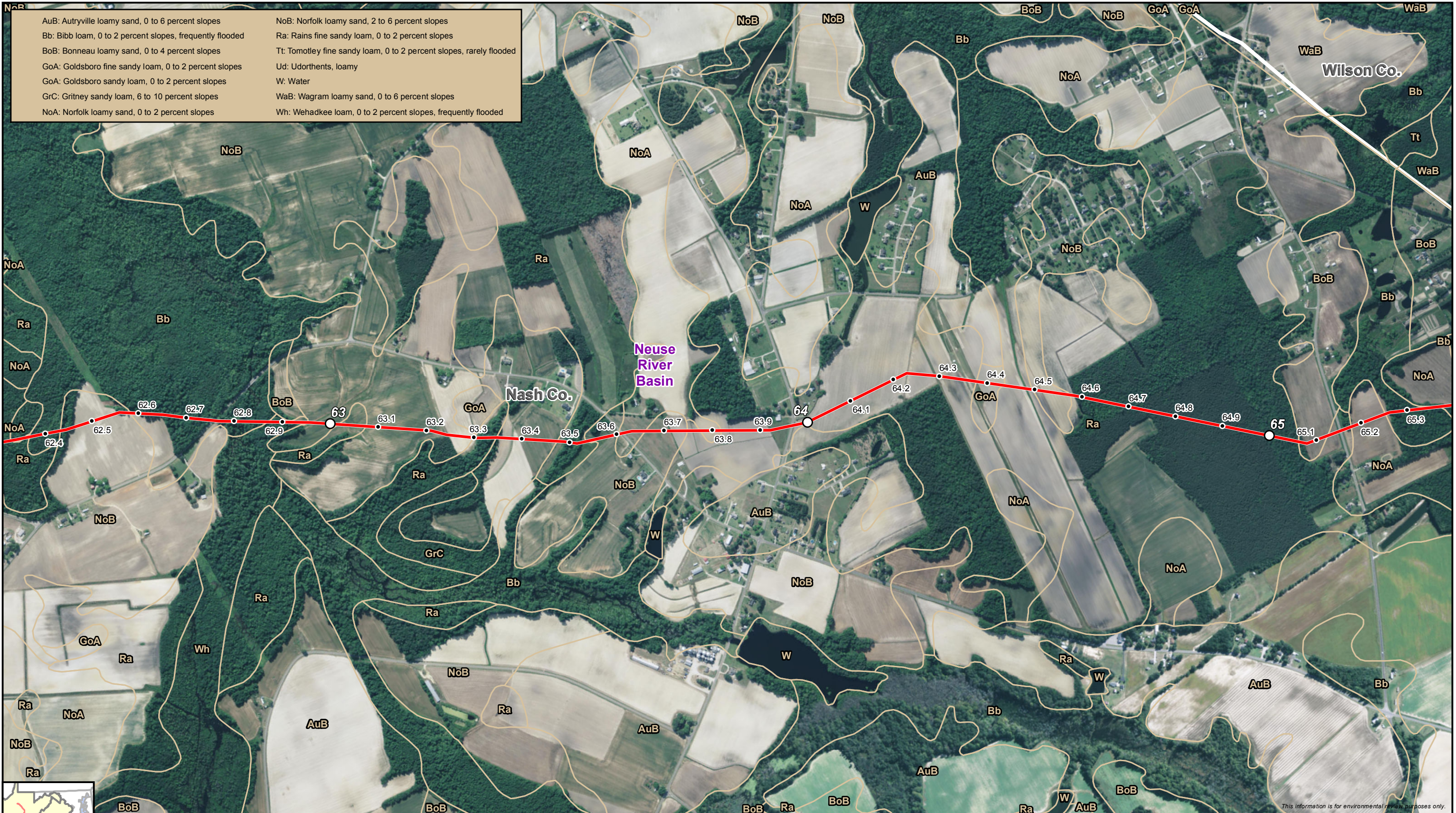
- Proposed Route
- SSURGO Soils
- River Basin Boundary



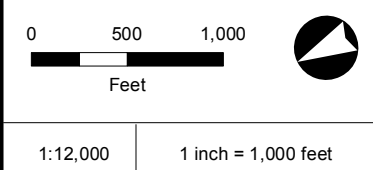
Atlantic Coast Pipeline
Soil Survey in Tar/Pamlico and Neuse River Basins
 Nash County, North Carolina
 Centerline: AP-2
 Page 16 of 34






AuB: Auryville loamy sand, 0 to 6 percent slopes	NoB: Norfolk loamy sand, 2 to 6 percent slopes
Bb: Bibb loam, 0 to 2 percent slopes, frequently flooded	Ra: Rains fine sandy loam, 0 to 2 percent slopes
BoB: Bonneau loamy sand, 0 to 4 percent slopes	Tt: Tomotley fine sandy loam, 0 to 2 percent slopes, rarely flooded
GoA: Goldsboro fine sandy loam, 0 to 2 percent slopes	Ud: Udorthents, loamy
GoA: Goldsboro sandy loam, 0 to 2 percent slopes	W: Water
GrC: Gritney sandy loam, 6 to 10 percent slopes	WaB: Wagram loamy sand, 0 to 6 percent slopes
NoA: Norfolk loamy sand, 0 to 2 percent slopes	Wh: Wehadkee loam, 0 to 2 percent slopes, frequently flooded



This information is for environmental review purposes only.



 Proposed Route
 SSURGO Soils
 River Basin Boundary

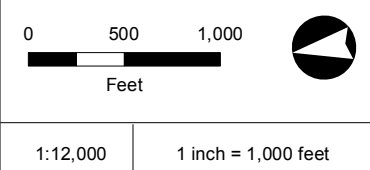


Atlantic Coast Pipeline
Soil Survey in Tar/Pamlico and Neuse River Basins
 Nash County, North Carolina
 Centerline: AP-2
 Page 17 of 34





AuB: Auryville loamy sand, 0 to 6 percent slopes	NuB: Norfolk-Urban land complex, 0 to 6 percent slopes
Bb: Bibb loam, 0 to 2 percent slopes, frequently flooded	Qu: Pits, quarry
BnB: Blanton loamy sand, 0 to 6 percent slopes	Ra: Rains fine sandy loam, 0 to 2 percent slopes
BoB: Bonneau loamy sand, 0 to 4 percent slopes	Ra: Rains sandy loam, 0 to 2 percent slopes
FuB: Fuquay loamy sand, 0 to 6 percent slopes	Sa: Stallings fine sandy loam, 0 to 2 percent slopes
GoA: Goldsboro fine sandy loam, 0 to 2 percent slopes	To: Toisnot loam, 0 to 2 percent slopes
GoA: Goldsboro sandy loam, 0 to 2 percent slopes	Tt: Tomotley fine sandy loam, 0 to 2 percent slopes, rarely flooded
MaA: Marlboro loamy sand, 0 to 2 percent slopes	Ud: Udorthents, loamy
MaB: Marlboro loamy sand, 2 to 5 percent slopes	Ur: Urban land
NaB2: Nankin sandy loam, 2 to 8 percent slopes, moderately eroded	VaB: Varina loamy sand, 2 to 6 percent slopes
NoA: Norfolk loamy sand, 0 to 2 percent slopes	WaB: Wagram loamy sand, 0 to 6 percent slopes
NoB: Norfolk loamy sand, 2 to 6 percent slopes	WeB: Wedowee coarse sandy loam, 2 to 6 percent slopes



- Proposed Route
- SSURGO Soils
- River Basin Boundary

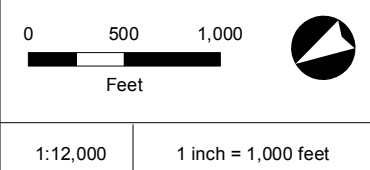
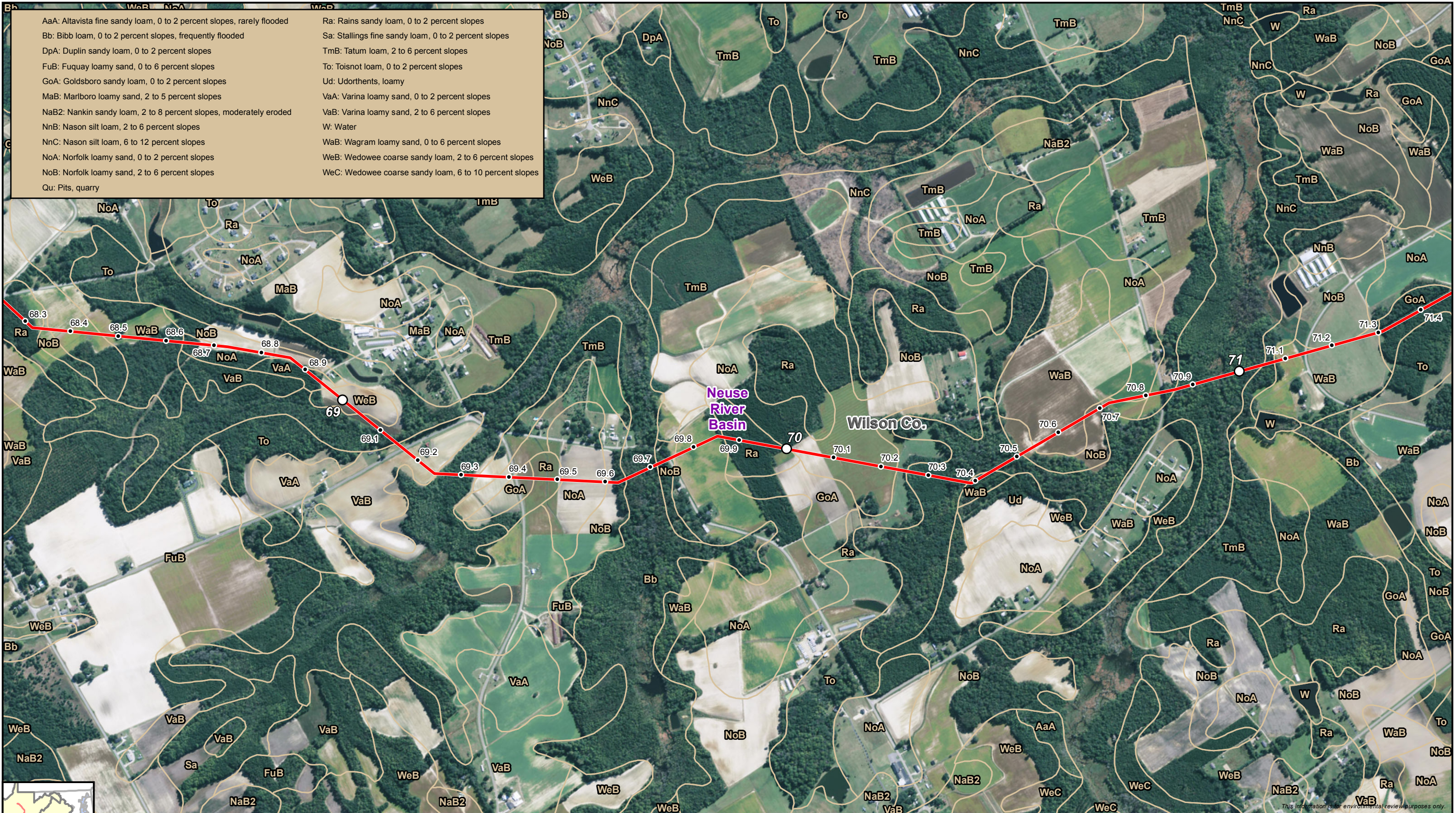


Atlantic Coast Pipeline
Soil Survey in Tar/Pamlico and Neuse River Basins
 Wilson County, North Carolina
 Centerline: AP-2
 Page 18 of 34



DRAWN BY: JPB

AaA: Altavista fine sandy loam, 0 to 2 percent slopes, rarely flooded	Ra: Rains sandy loam, 0 to 2 percent slopes
Bb: Bibb loam, 0 to 2 percent slopes, frequently flooded	Sa: Stallings fine sandy loam, 0 to 2 percent slopes
DpA: Duplin sandy loam, 0 to 2 percent slopes	TmB: Tatum loam, 2 to 6 percent slopes
FuB: Fuquay loamy sand, 0 to 6 percent slopes	To: Toisnot loam, 0 to 2 percent slopes
GoA: Goldsboro sandy loam, 0 to 2 percent slopes	Ud: Udorthents, loamy
MaB: Marlboro loamy sand, 2 to 5 percent slopes	VaA: Varina loamy sand, 0 to 2 percent slopes
NaB2: Nankin sandy loam, 2 to 8 percent slopes, moderately eroded	VaB: Varina loamy sand, 2 to 6 percent slopes
NnB: Nason silt loam, 2 to 6 percent slopes	W: Water
NnC: Nason silt loam, 6 to 12 percent slopes	WeB: Wedowee coarse sandy loam, 0 to 6 percent slopes
NoA: Norfolk loamy sand, 0 to 2 percent slopes	WeC: Wedowee coarse sandy loam, 6 to 10 percent slopes
NoB: Norfolk loamy sand, 2 to 6 percent slopes	
Qu: Pits, quarry	



- Proposed Route
- SSURGO Soils
- River Basin Boundary

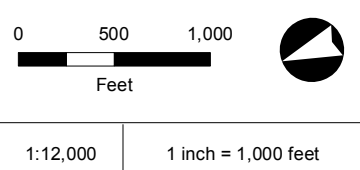


Atlantic Coast Pipeline
Soil Survey in Tar/Pamlico and Neuse River Basins
Wilson County, North Carolina
Centerline: AP-2
Page 19 of 34



DRAWN BY: JPB

AaA: Altavista fine sandy loam, 0 to 2 percent slopes, rarely flooded	NoB: Norfolk loamy sand, 2 to 6 percent slopes
Bb: Bibb loam, 0 to 2 percent slopes, frequently flooded	Ra: Rains sandy loam, 0 to 2 percent slopes
Co: Coxville sandy loam, 0 to 2 percent slopes	Ro: Roanoke loam, 0 to 2 percent slopes, occasionally flooded
DpA: Duplin sandy loam, 0 to 2 percent slopes	StA: State loamy sand, 0 to 3 percent slopes, rarely flooded
GoA: Goldsboro sandy loam, 0 to 2 percent slopes	TmB: Tatum loam, 2 to 6 percent slopes
GtB2: Gritney sandy loam, 2 to 5 percent slopes, moderately eroded	To: Toisnot loam, 0 to 2 percent slopes
MaA: Marlboro loamy sand, 0 to 2 percent slopes	Tt: Tomotley fine sandy loam, 0 to 2 percent slopes, rarely flooded
MaB: Marlboro loamy sand, 2 to 5 percent slopes	VaB: Varina loamy sand, 2 to 6 percent slopes
NnB: Nason silt loam, 2 to 6 percent slopes	W: Water
NnC: Nason silt loam, 6 to 12 percent slopes	WaB: Wagram loamy sand, 0 to 6 percent slopes
NoA: Norfolk loamy sand, 0 to 2 percent slopes	Wh: Wehadkee and Chewacla soils, 0 to 2 percent slopes, frequently flooded



- Proposed Route
- SSURGO Soils
- River Basin Boundary



Atlantic Coast Pipeline
Soil Survey in Tar/Pamlico and Neuse River Basins
Wilson County, North Carolina
Centerline: AP-2
Page 20 of 34

