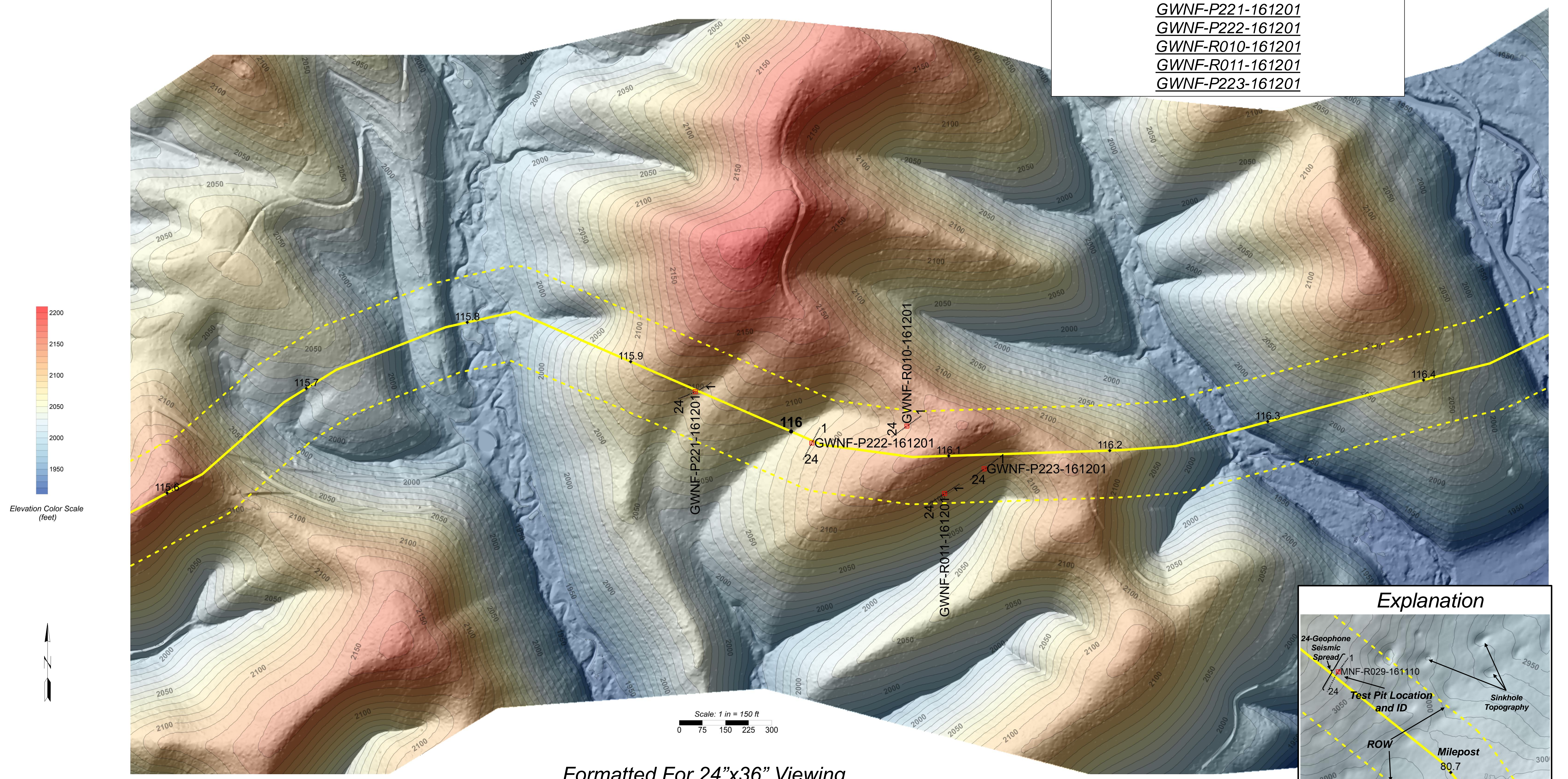
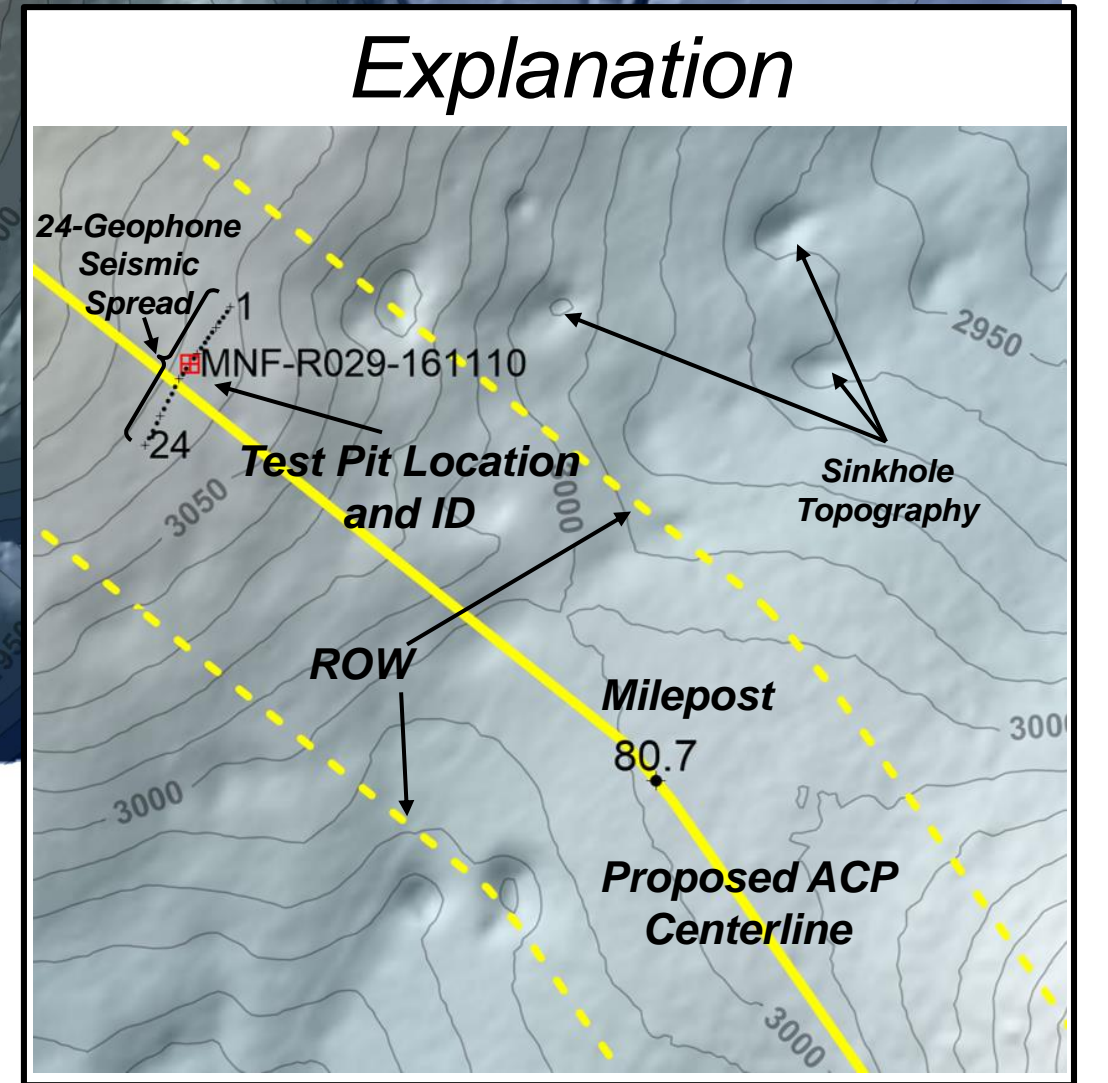


Map Sheet 16
Seismic Refraction Line Locations

- Test Pits:**
GWNF-P221-161201
GWNF-P222-161201
GWNF-R010-161201
GWNF-R011-161201
GWNF-P223-161201



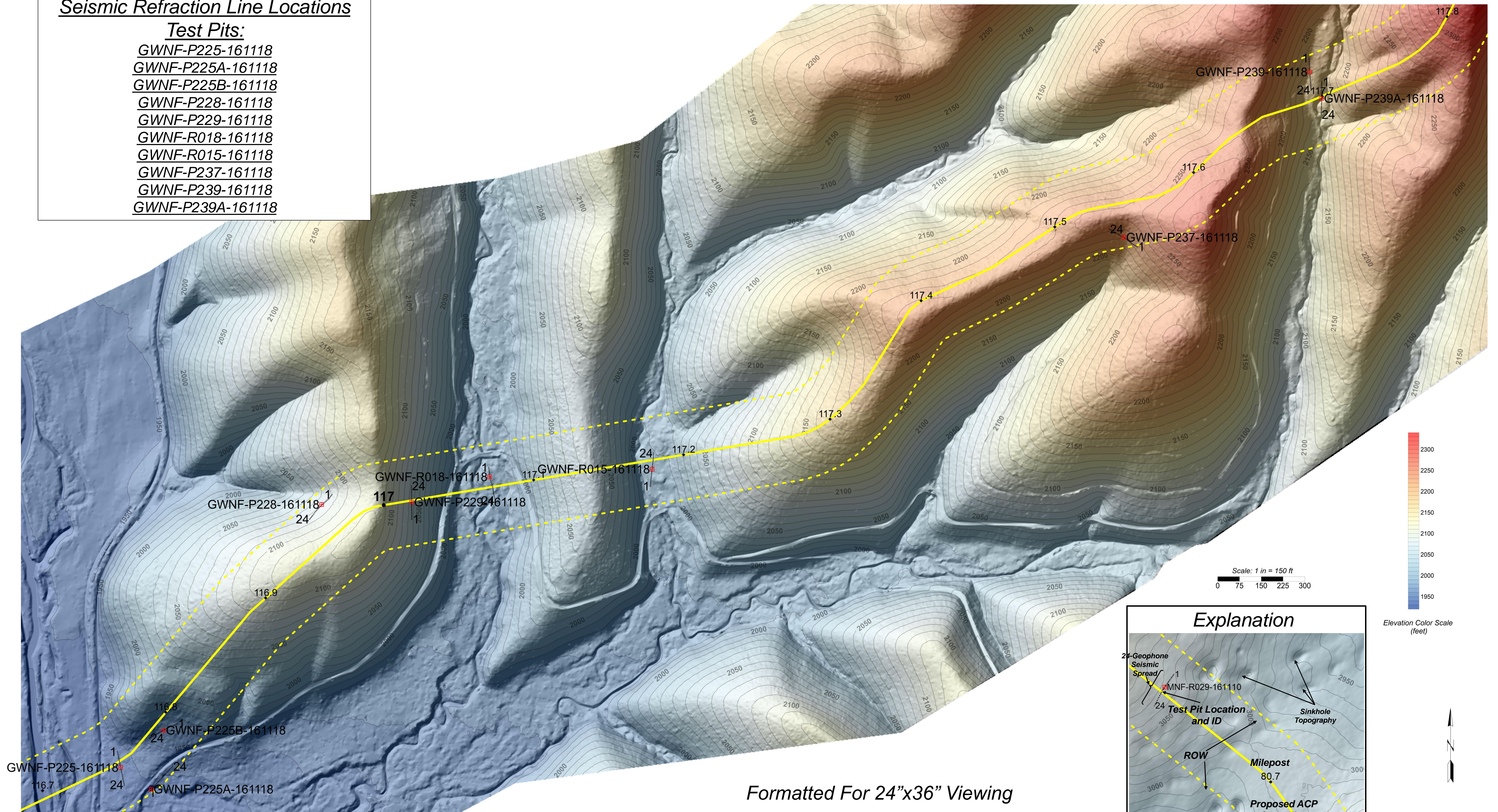
Formatted For 24"x36" Viewing



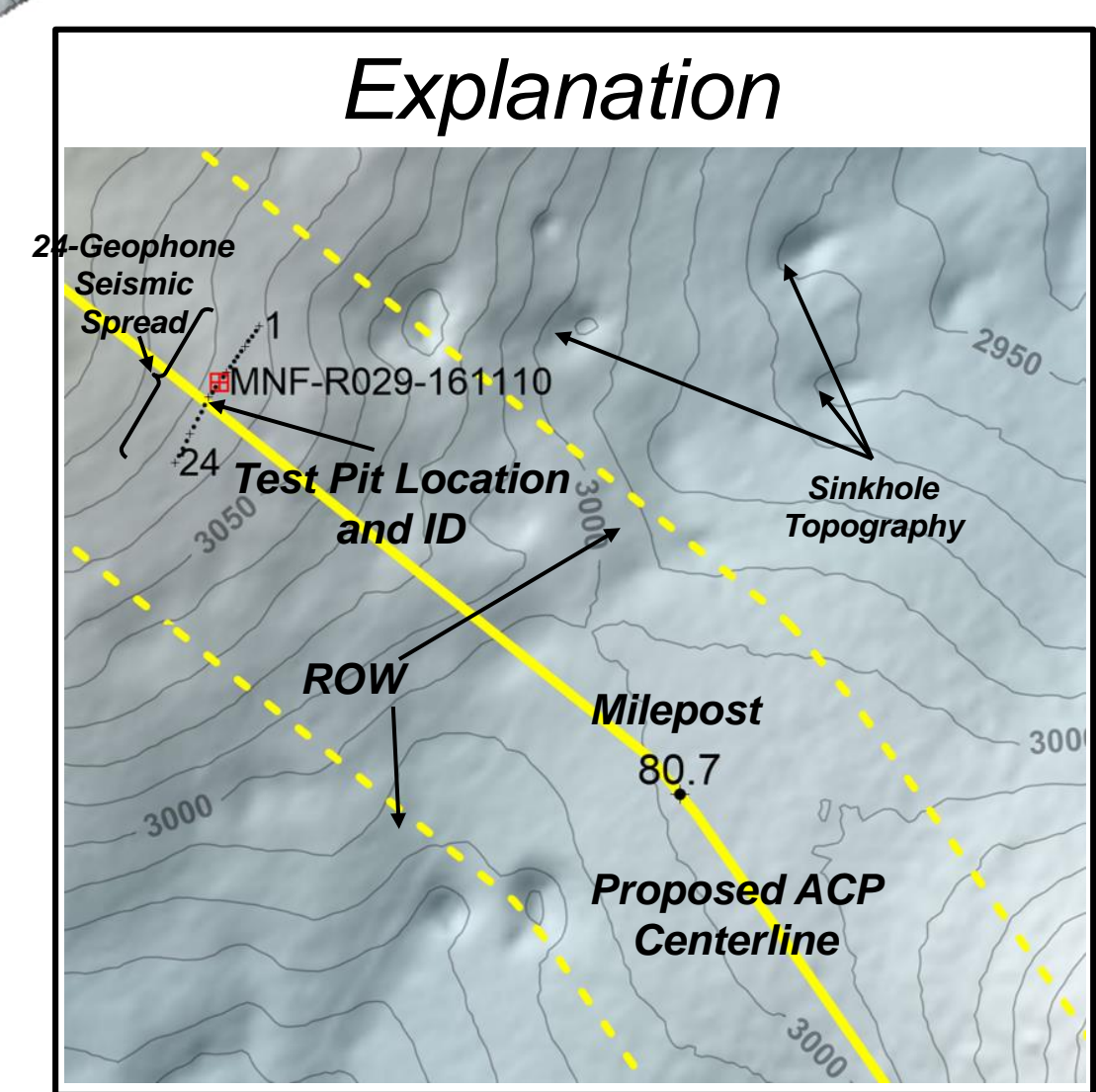
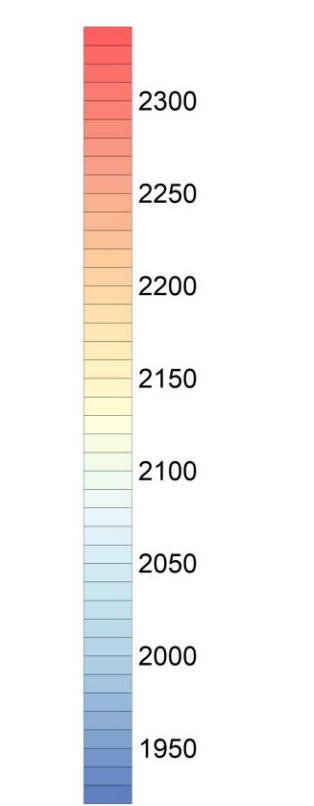
Map Sheet 17
Seismic Refraction Line Locations

Test Pits:

- GWNF-P225-161118
- GWNF-P225A-161118
- GWNF-P225B-161118
- GWNF-P228-161118
- GWNF-P229-161118
- GWNF-R018-161118
- GWNF-R015-161118
- GWNF-P237-161118
- GWNF-P239-161118
- GWNF-P239A-161118

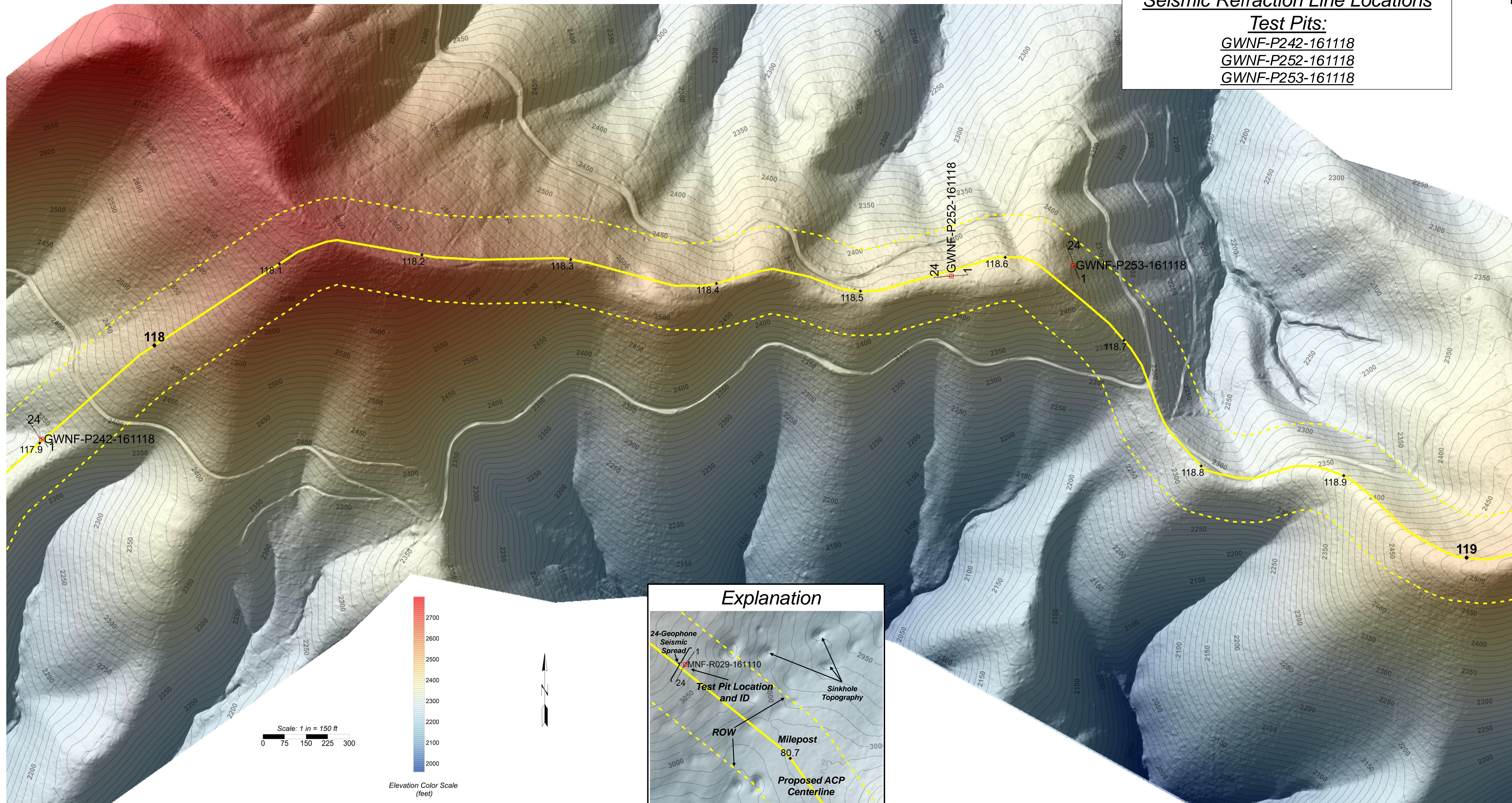


Scale: 1 in = 150 ft
 0 75 150 225 300



Formatted For 24"x36" Viewing

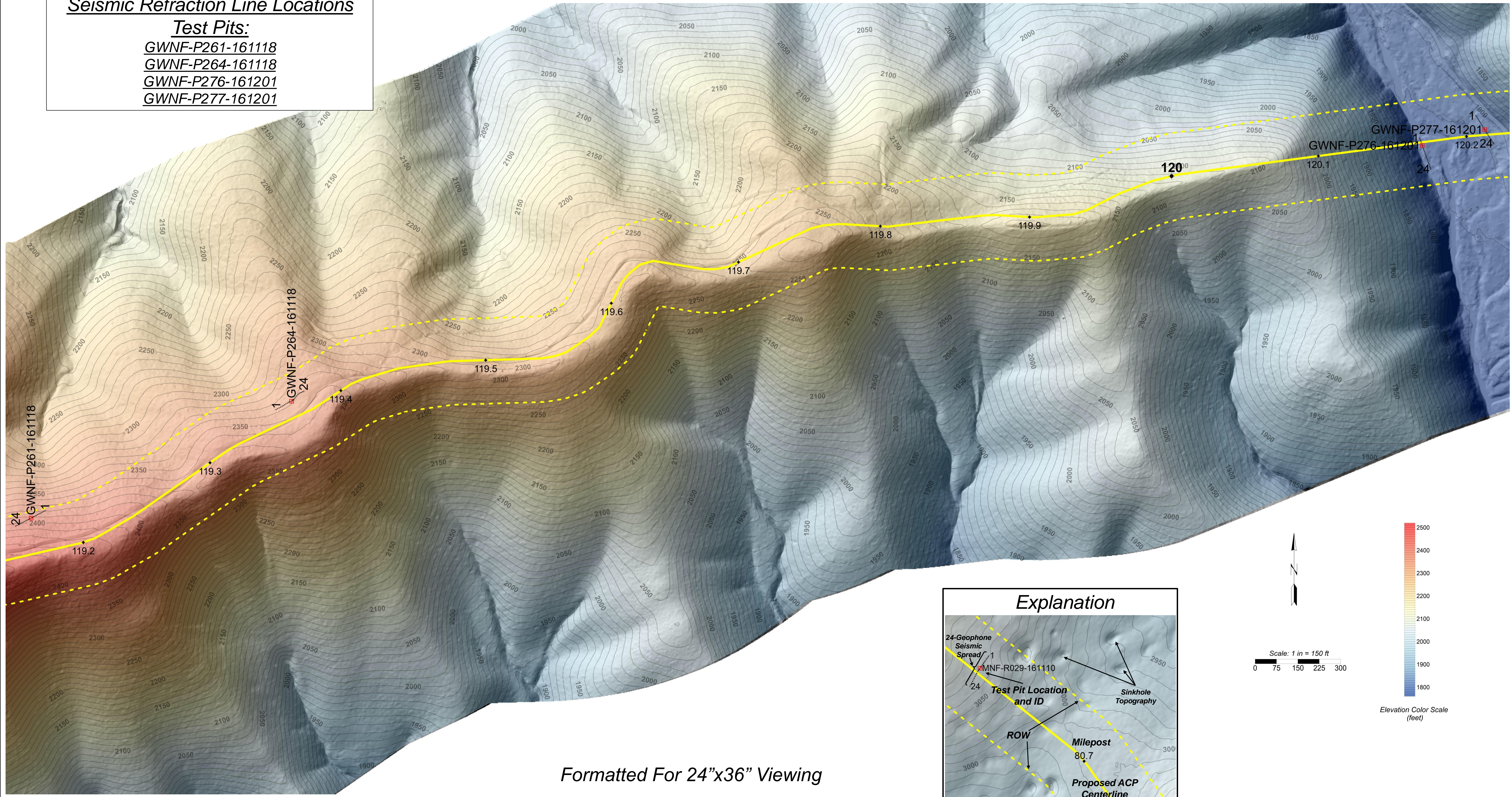
Map Sheet 18
Seismic Refraction Line Locations
Test Pits:
 GWNF-P242-161118
 GWNF-P252-161118
 GWNF-P253-161118



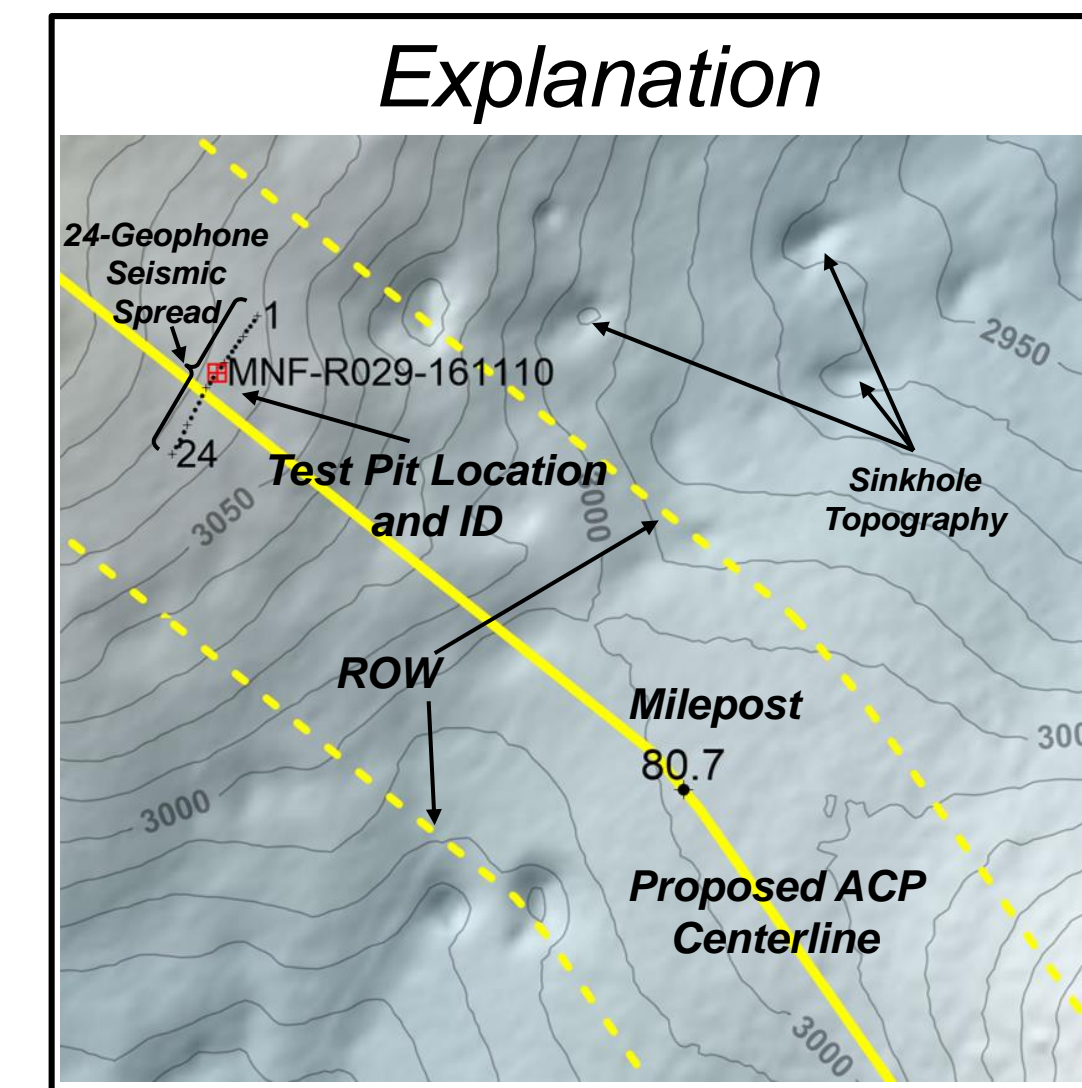
Formatted For 24"x36" Viewing

Map Sheet 19
Seismic Refraction Line Locations

Test Pits:
GWNF-P261-161118
GWNF-P264-161118
GWNF-P276-161201
GWNF-P277-161201

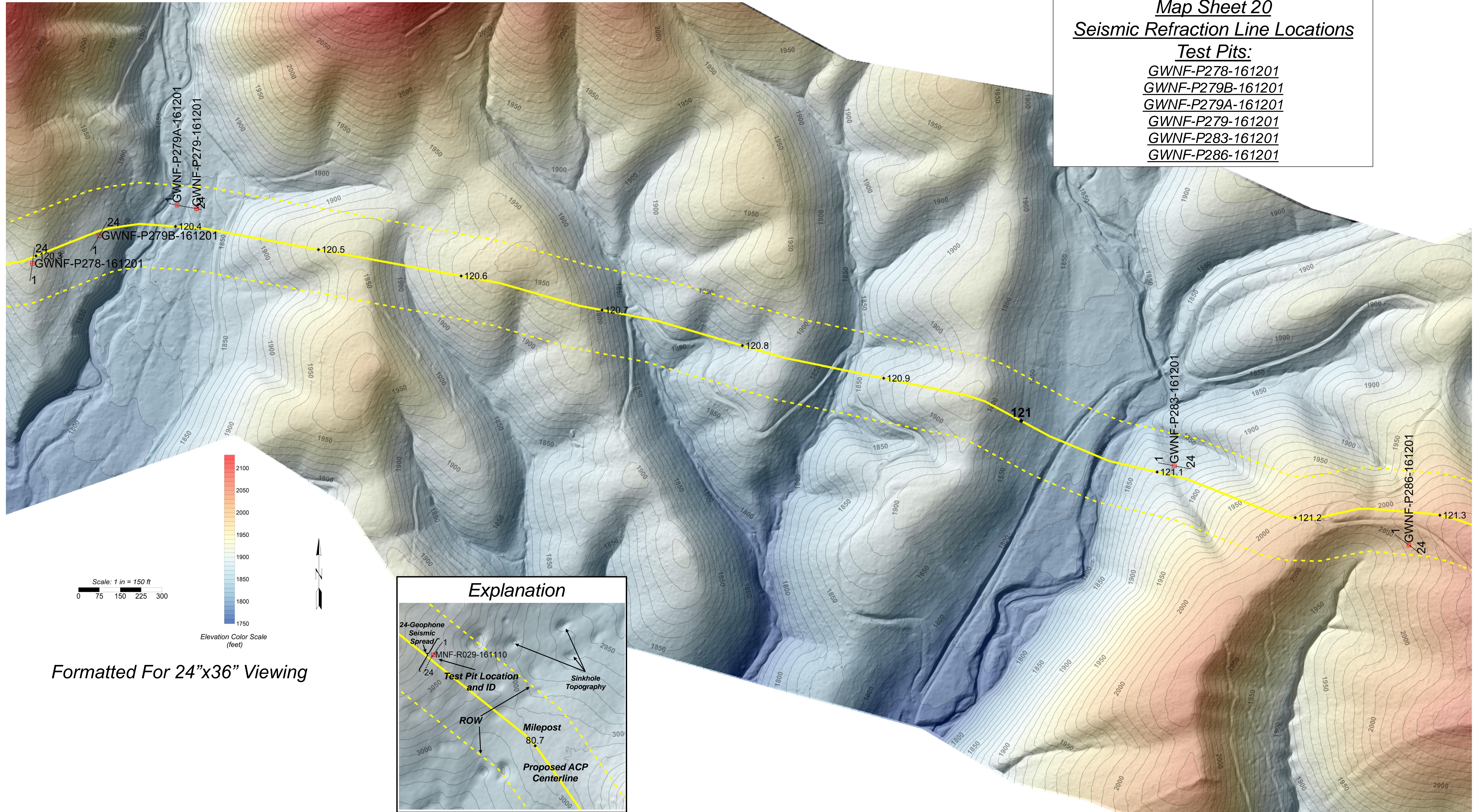


Formatted For 24"x36" Viewing



Map Sheet 20
Seismic Refraction Line Locations

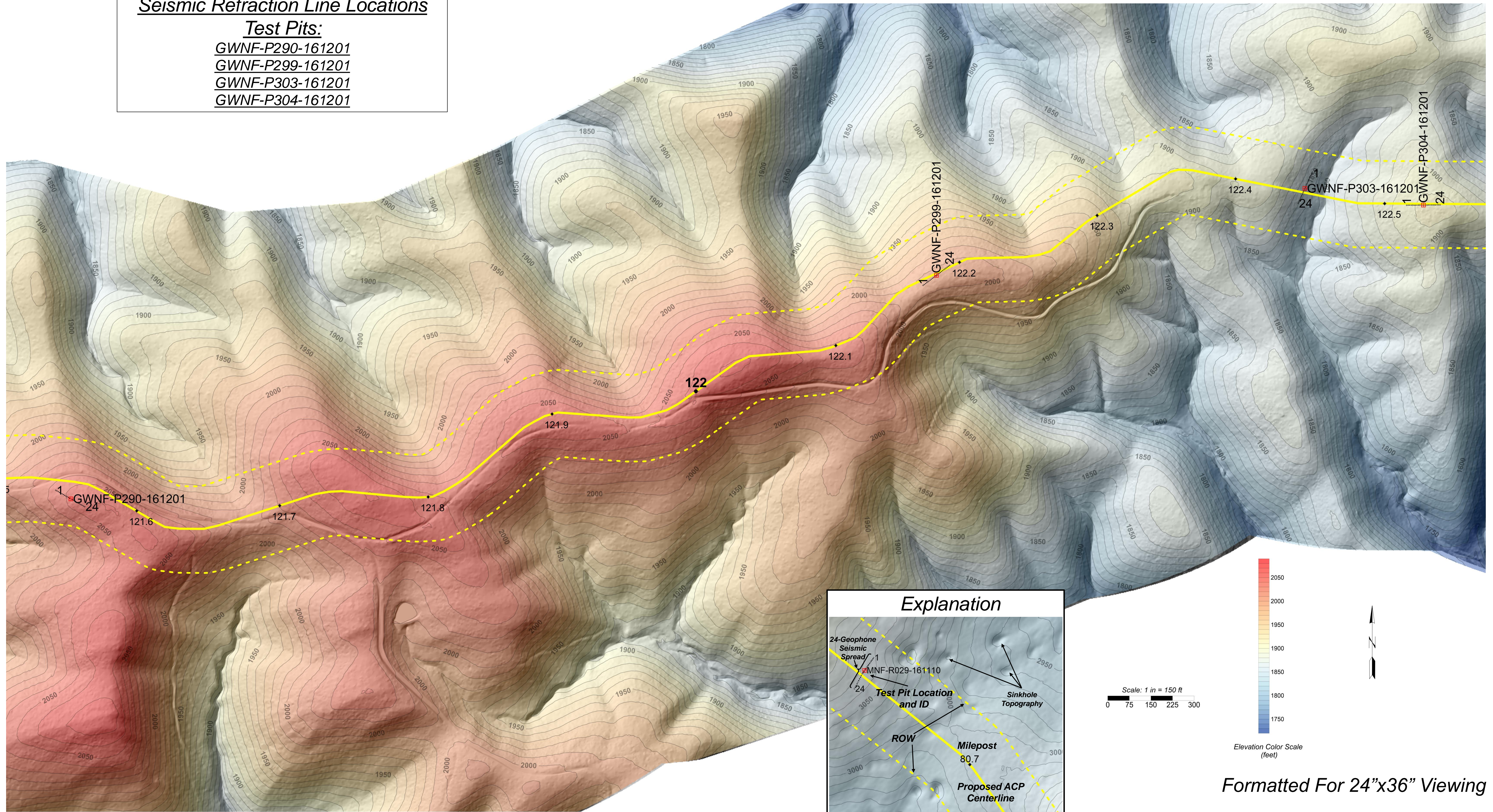
- Test Pits:**
 GWNF-P278-161201
 GWNF-P279B-161201
 GWNF-P279A-161201
 GWNF-P279-161201
 GWNF-P283-161201
 GWNF-P286-161201



Formatted For 24"x36" Viewing

Map Sheet 21
Seismic Refraction Line Locations

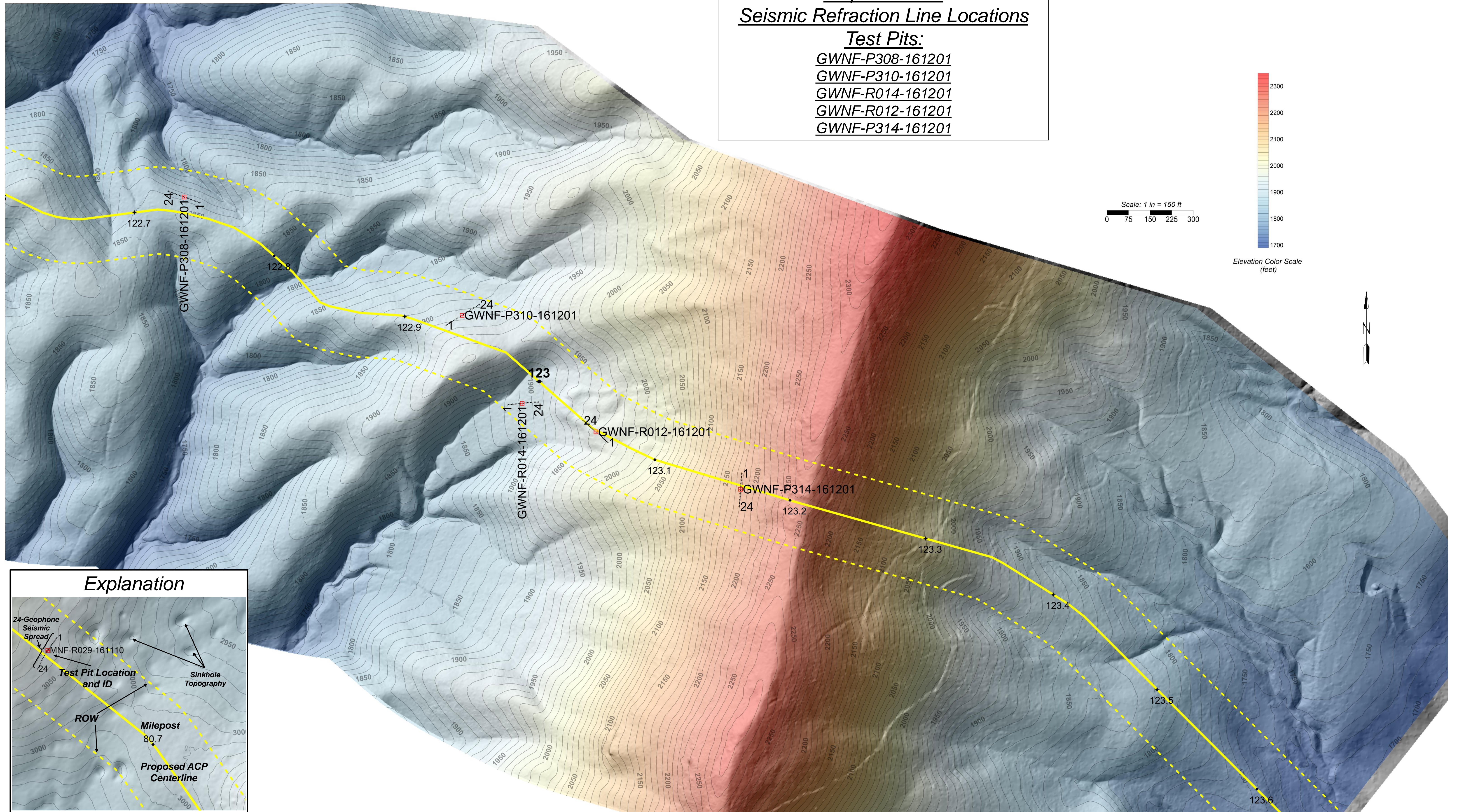
Test Pits:
 GWNF-P290-161201
 GWNF-P299-161201
 GWNF-P303-161201
 GWNF-P304-161201



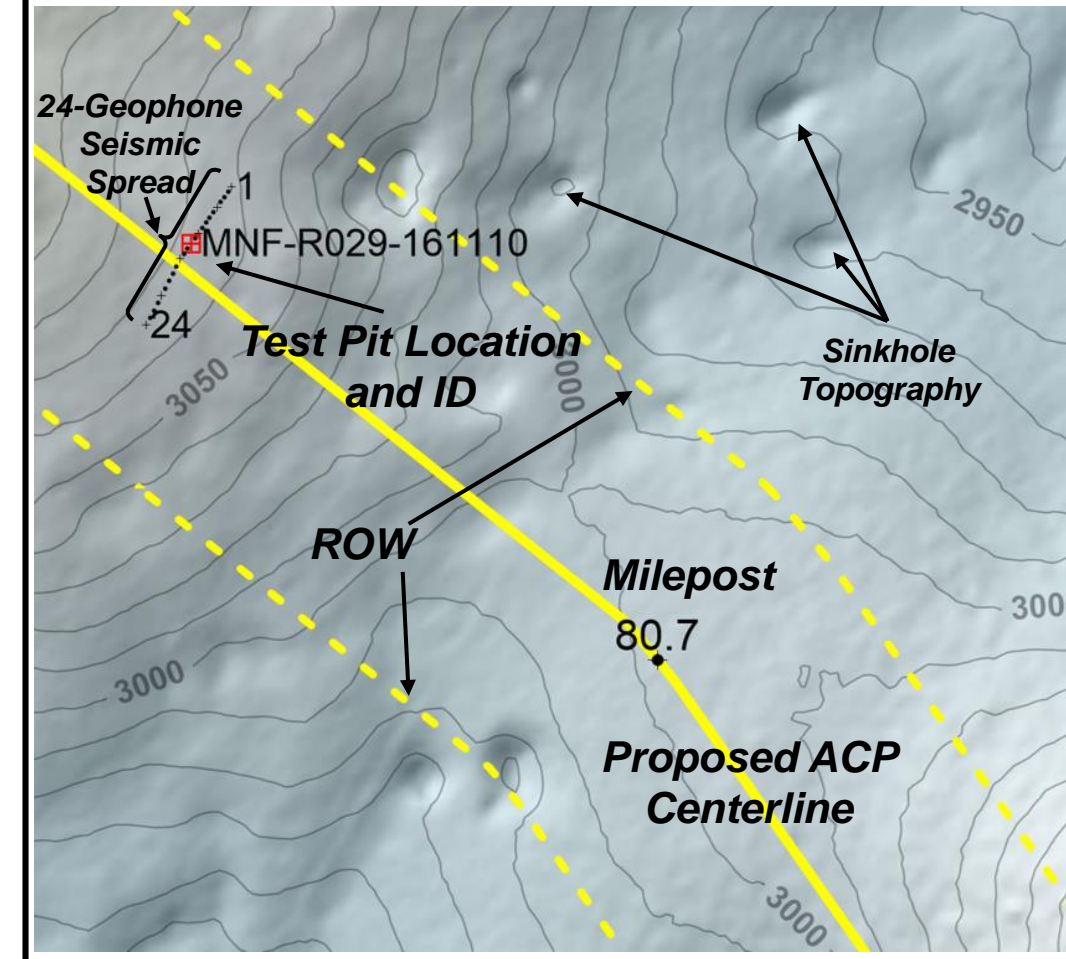
Formatted For 24"x36" Viewing

Map Sheet 22
Seismic Refraction Line Locations

- Test Pits:**
GWNF-P308-161201
GWNF-P310-161201
GWNF-R014-161201
GWNF-R012-161201
GWNF-P314-161201



Explanation

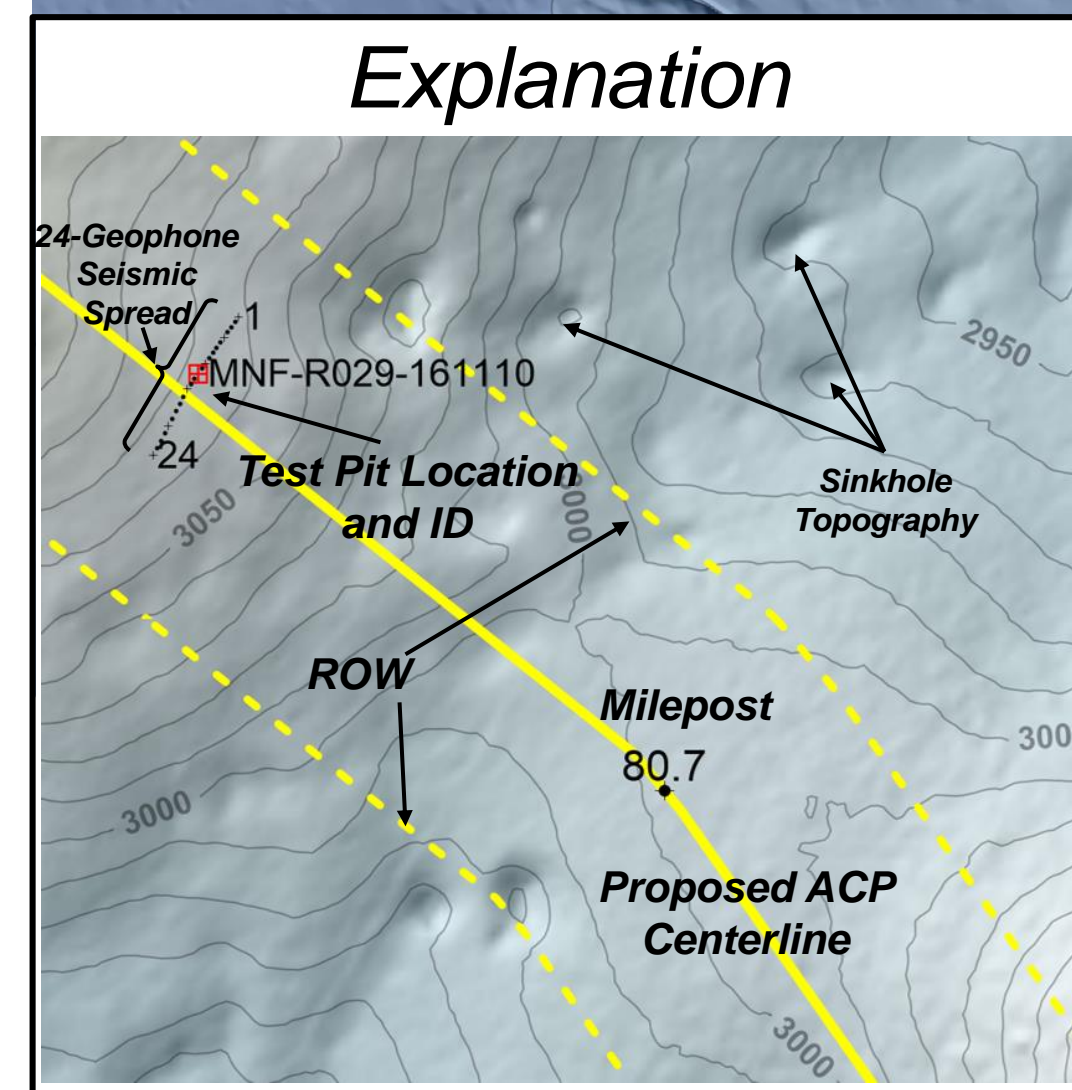
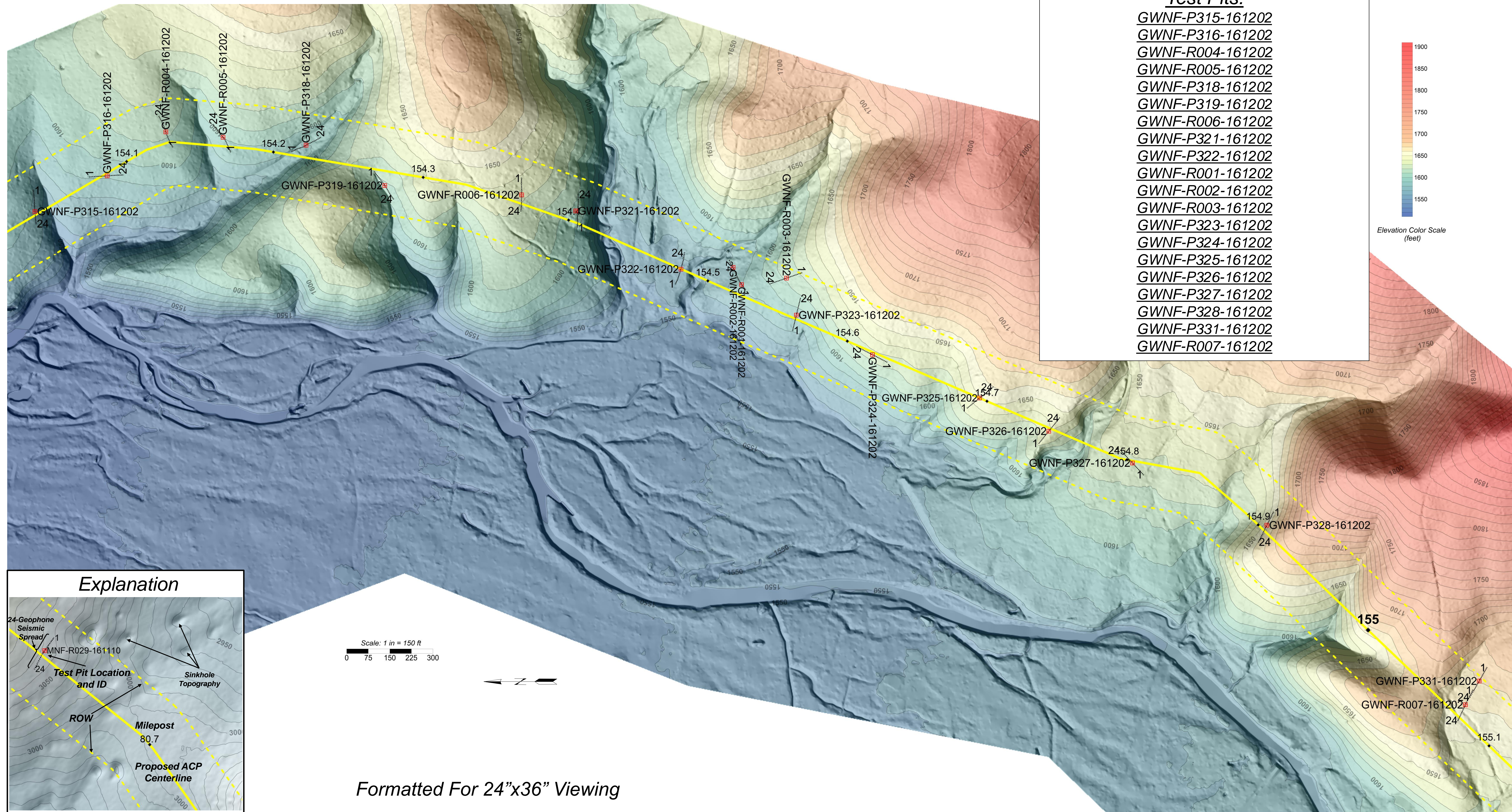
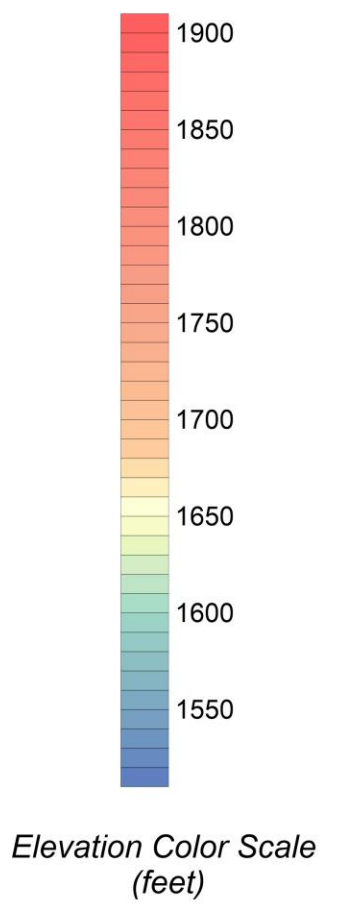


Formatted For 24"x36" Viewing

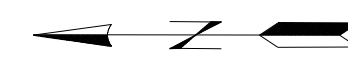
Map Sheet 23
Seismic Refraction Line Locations

Test Pits:

- GWNF-P315-161202
- GWNF-P316-161202
- GWNF-R004-161202
- GWNF-R005-161202
- GWNF-P318-161202
- GWNF-P319-161202
- GWNF-R006-161202
- GWNF-P321-161202
- GWNF-P322-161202
- GWNF-R001-161202
- GWNF-R002-161202
- GWNF-R003-161202
- GWNF-P323-161202
- GWNF-P324-161202
- GWNF-P325-161202
- GWNF-P326-161202
- GWNF-P327-161202
- GWNF-P328-161202
- GWNF-P331-161202
- GWNF-R007-161202

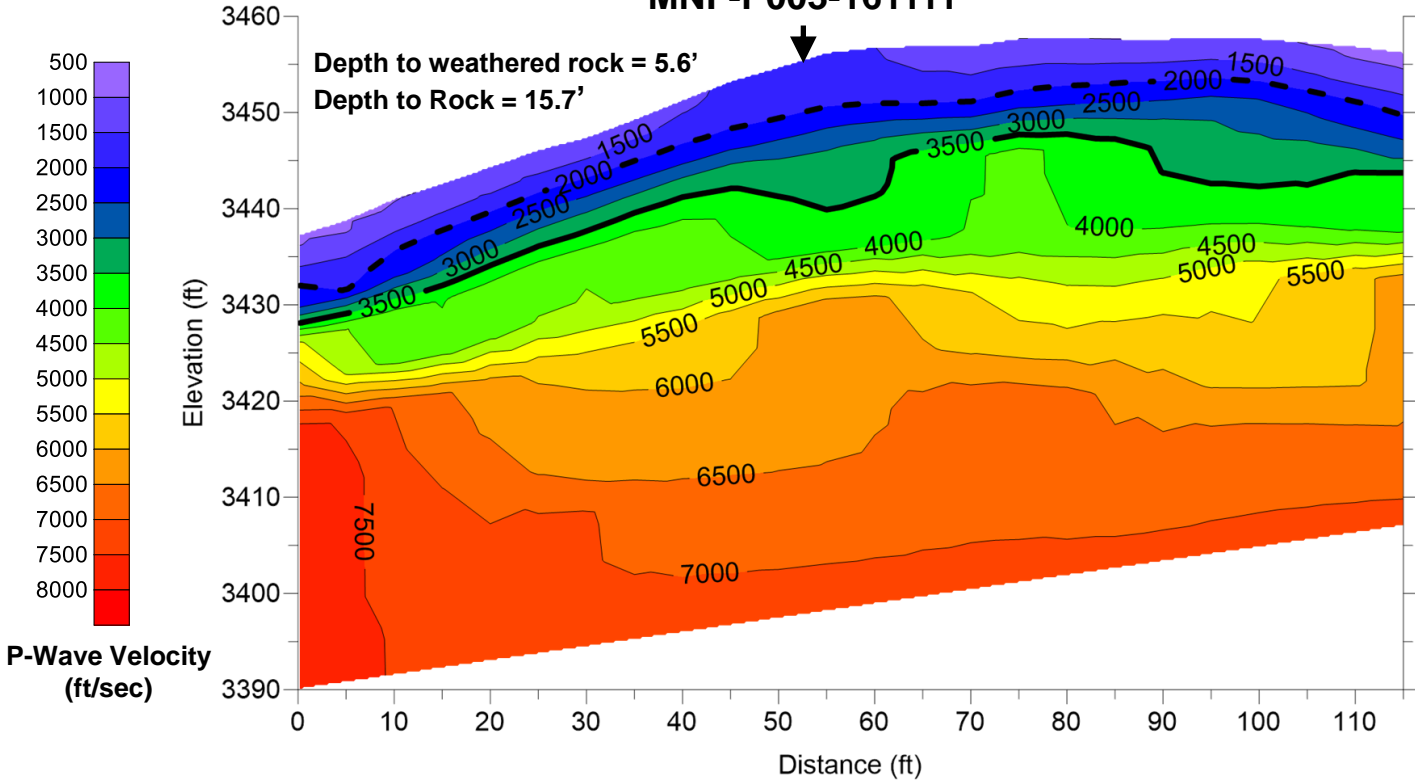


Scale: 1 in = 150 ft
 0 75 150 225 300

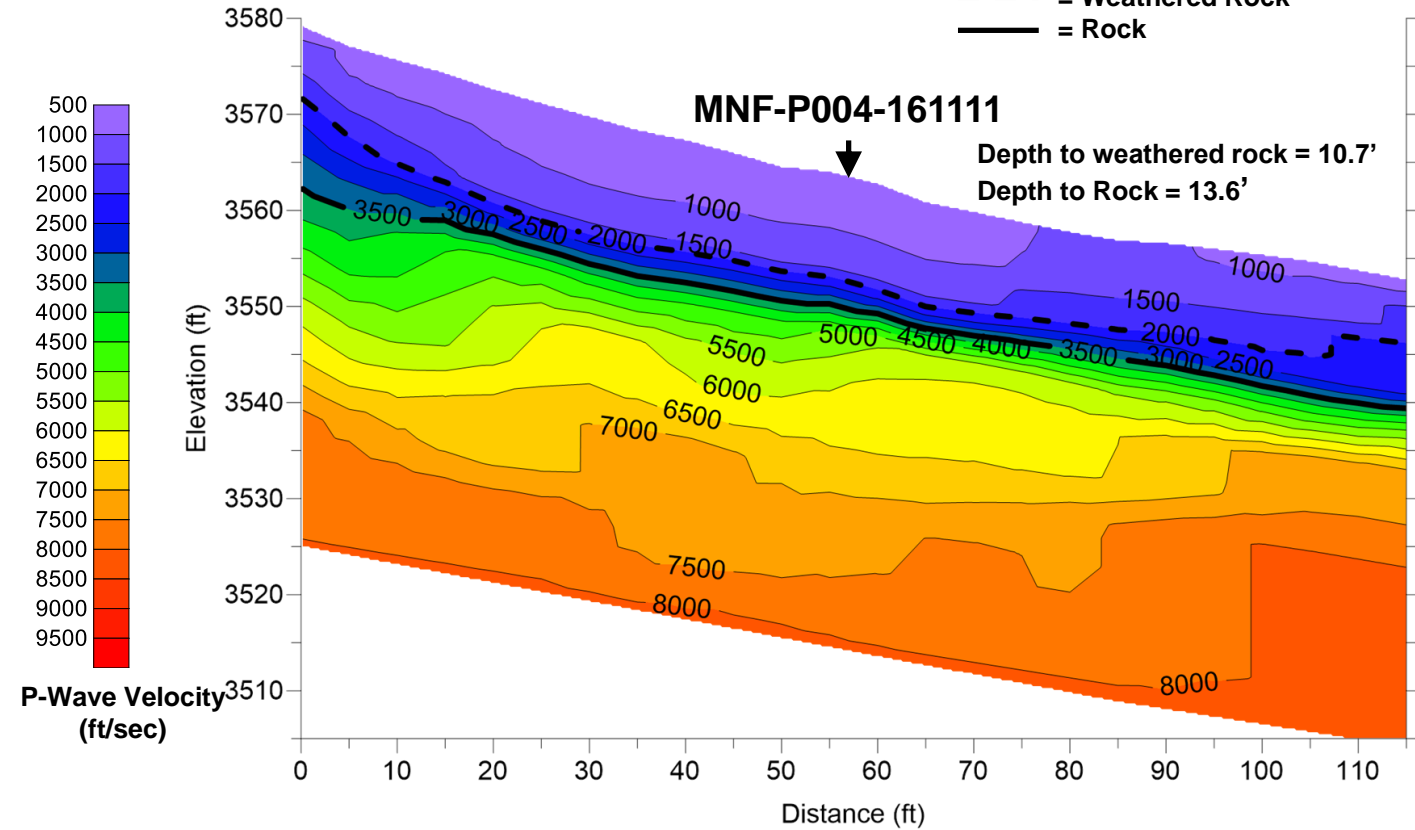


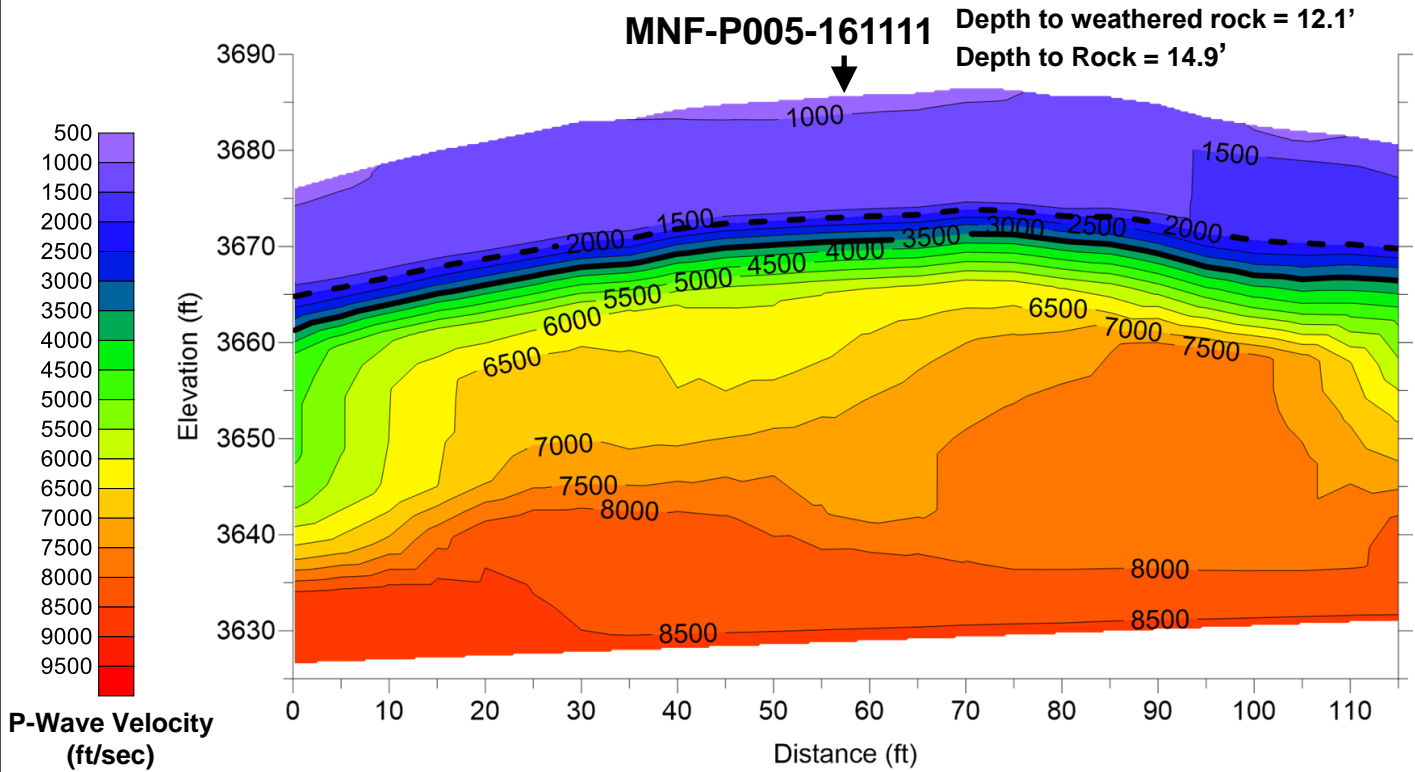
Formatted For 24"x36" Viewing

MNF-P003-161111

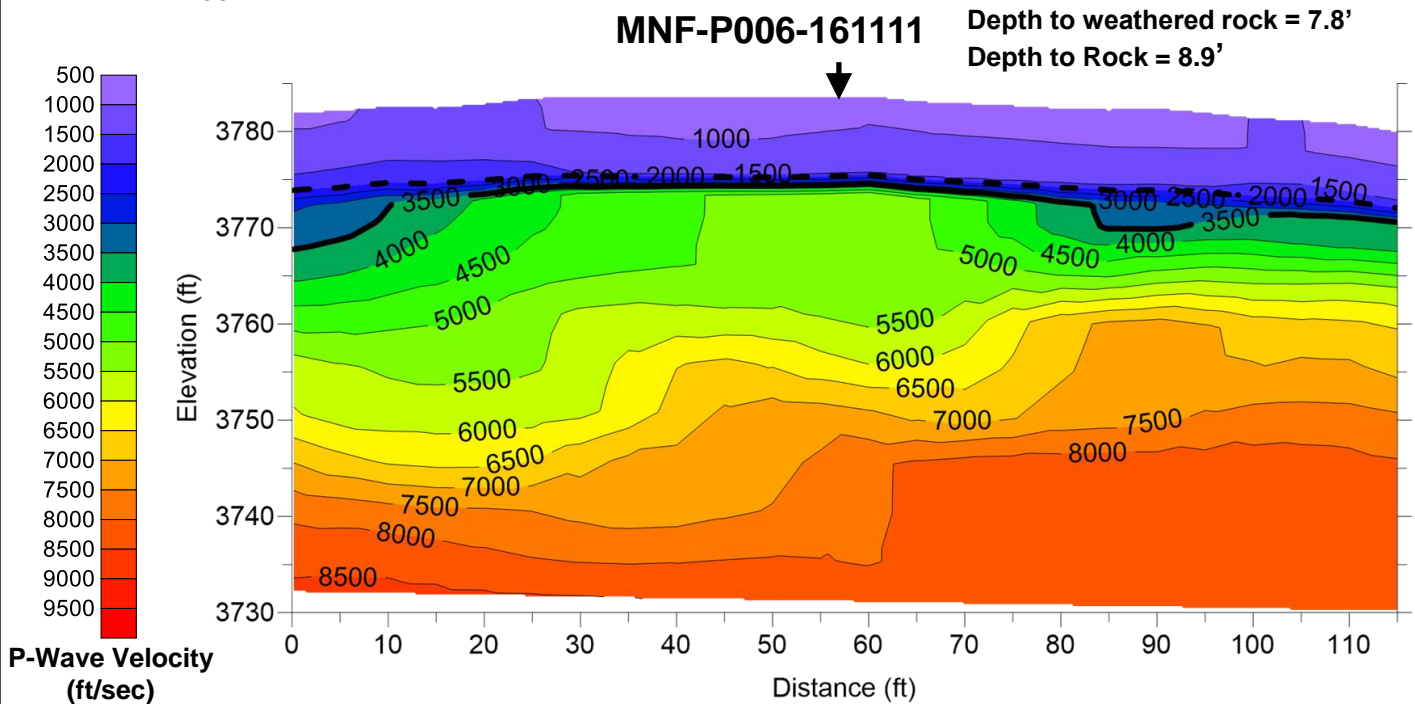


MNF-P004-161111





--- = Weathered Rock
 — = Rock



Draper Aden Associates

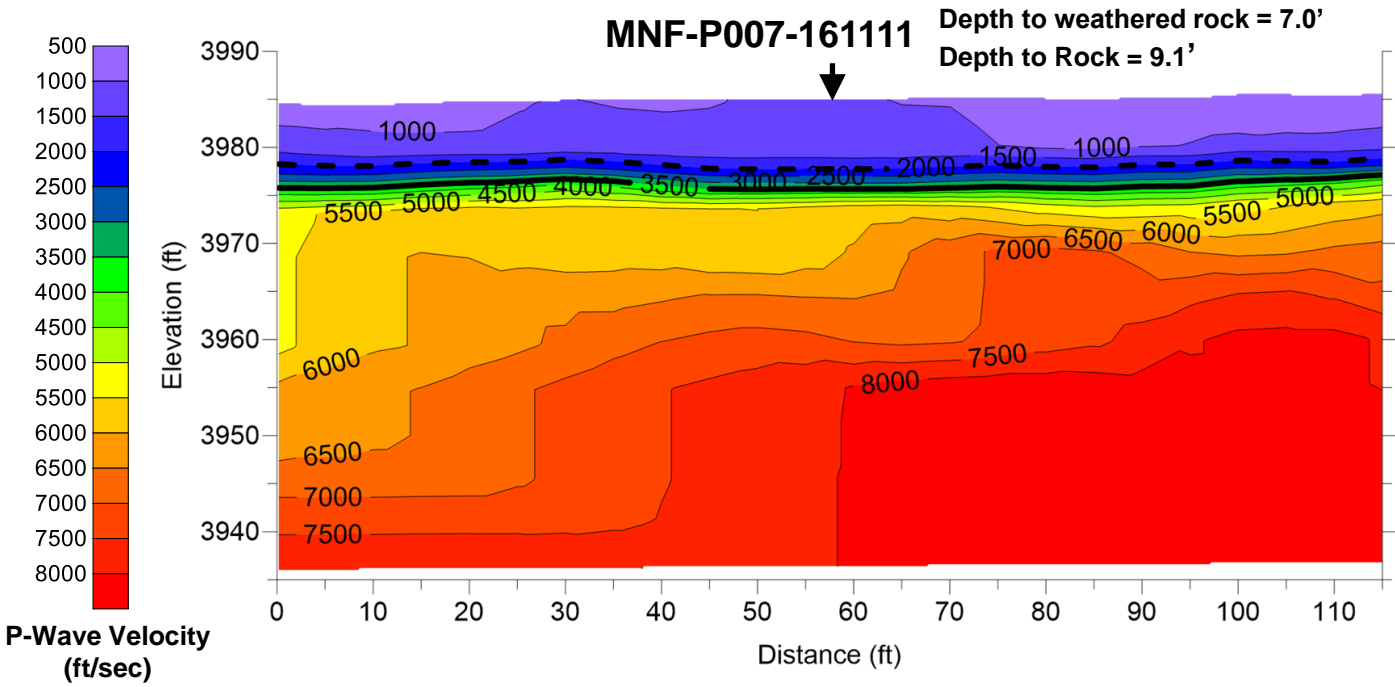
Engineering • Surveying • Environmental Services

2206 South Main Street
 Blacksburg, VA 24060
 540-552-0444 Fax: 540-552-0291

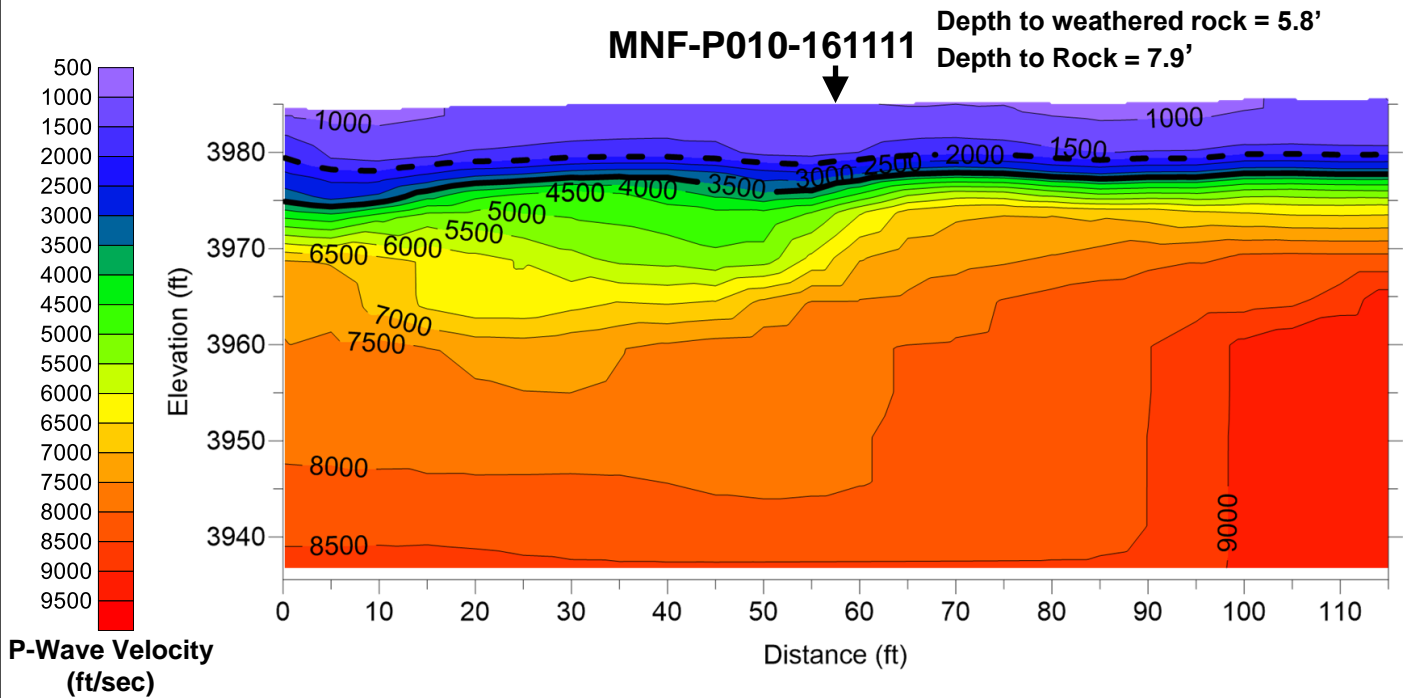
Richmond, VA
 Charlottesville, VA
 Hampton Roads, VA

Seismic Refraction Study for the
 Atlantic Coast Pipeline
 George Washington National Forest and
 Monongahela National Forest
 DAA Project Number: 16010129-010203

FIGURE
29



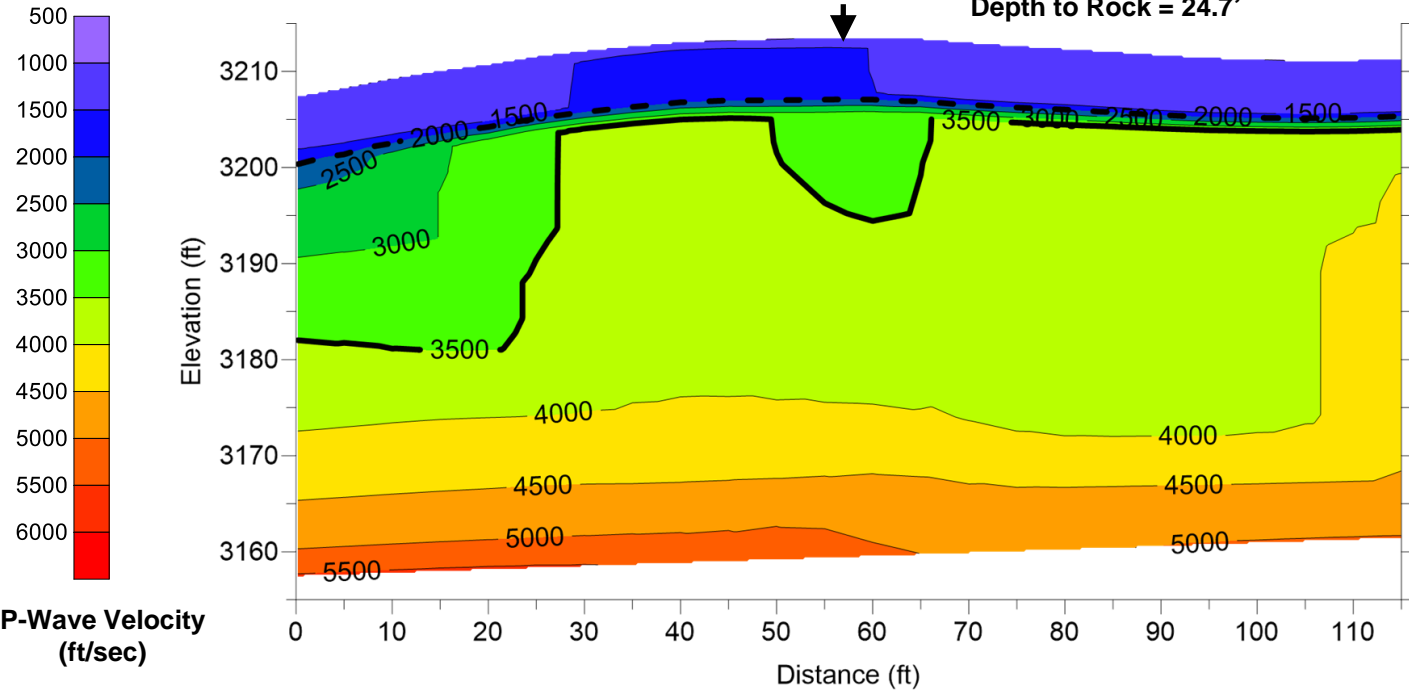
- - - = Weathered Rock
 ——— = Rock



Seismic refraction model results for MNF-P24-161108 and MNF-R28-161110

MNF-P024-161108

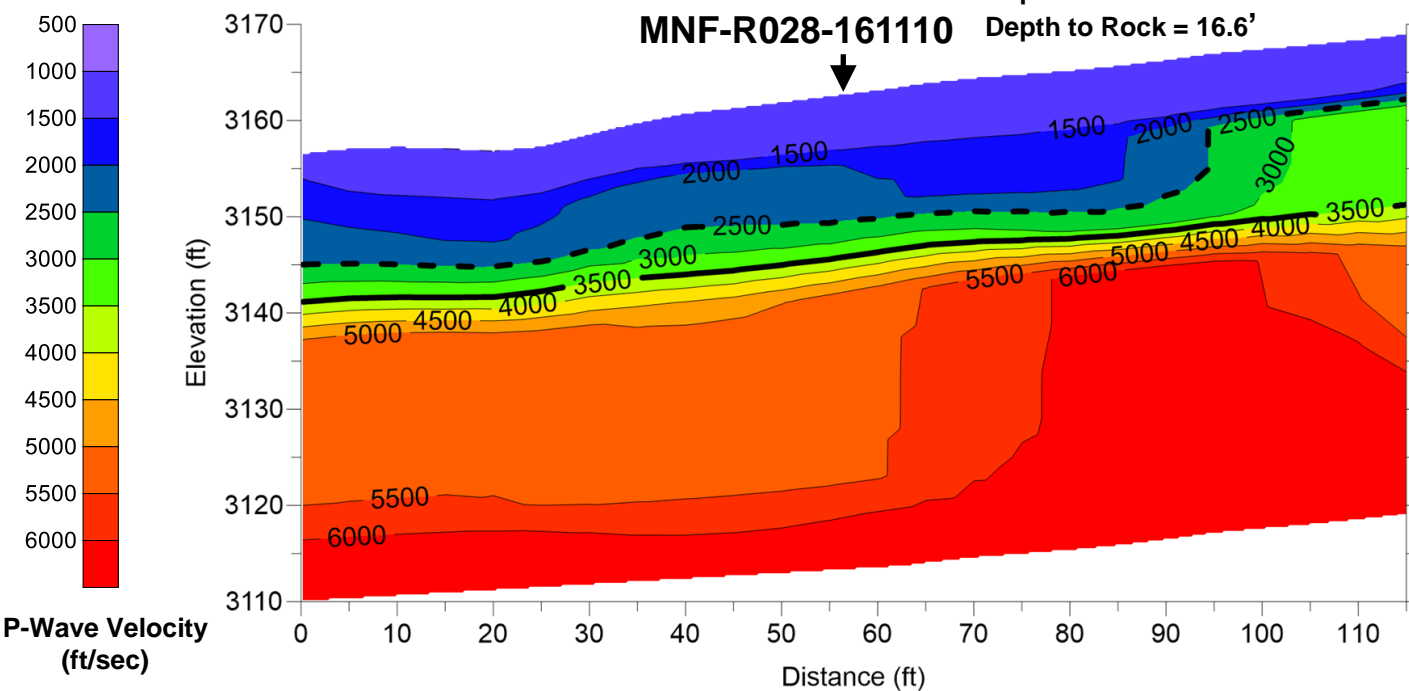
Depth to weathered rock = 6.2'
Depth to Rock = 24.7'

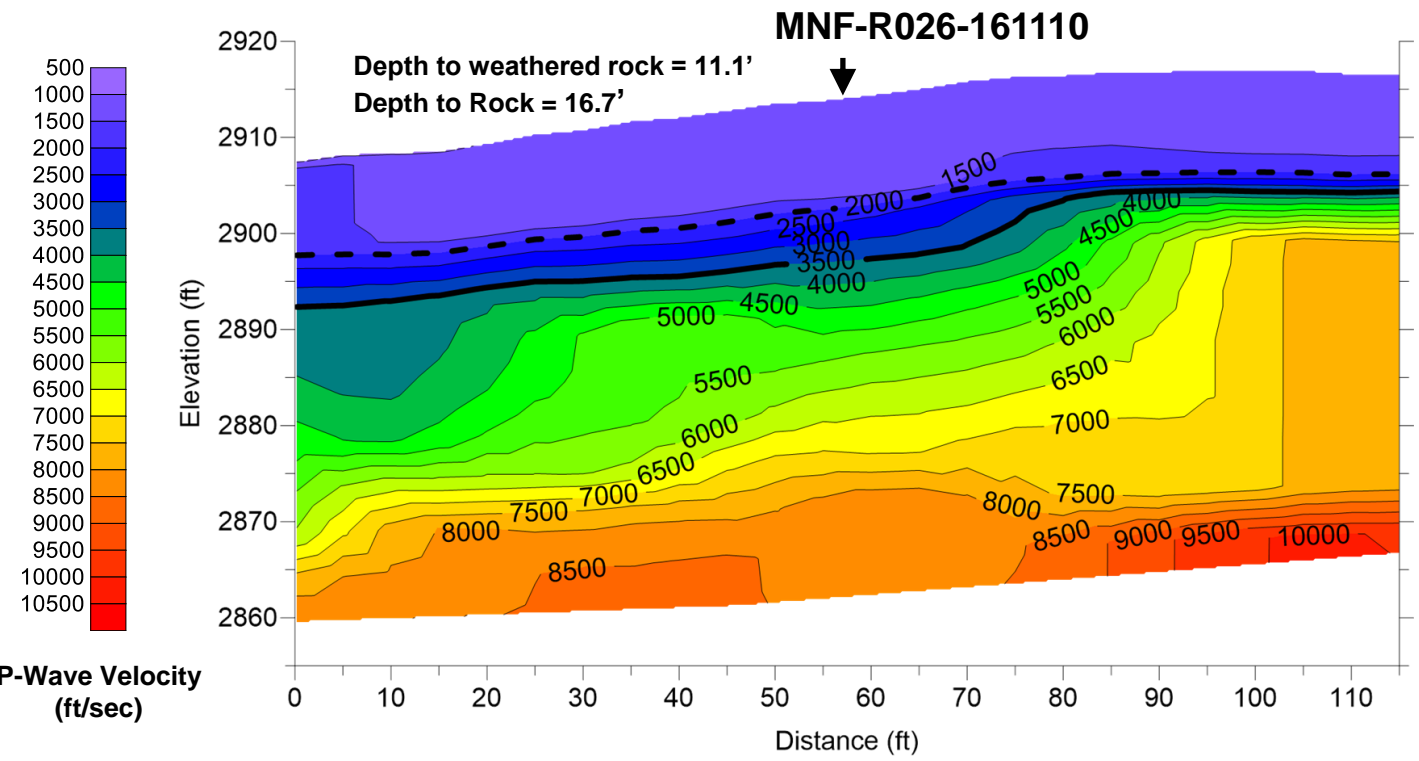
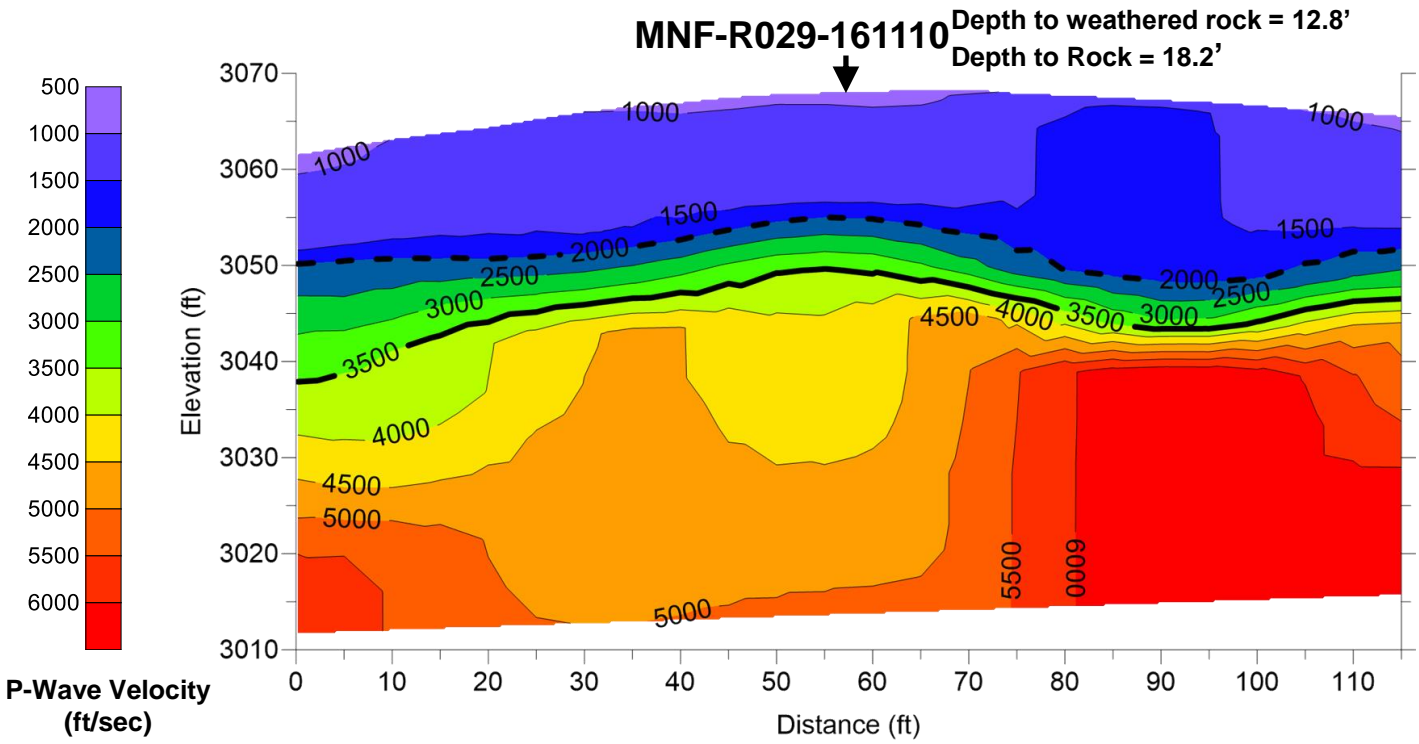


- - - = Weathered Rock
— = Rock

MNF-R028-161110

Depth to weathered rock = 13.3'
Depth to Rock = 16.6'





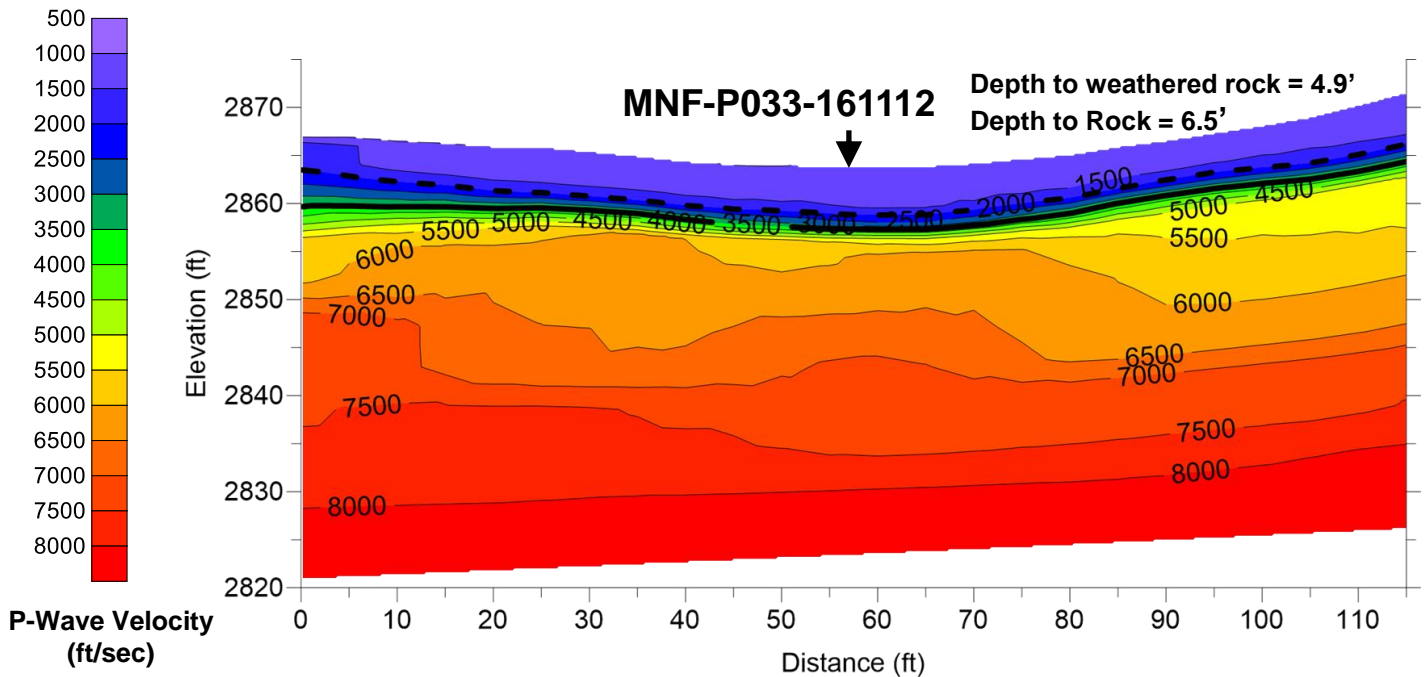
Draper Aden Associates
 Engineering • Surveying • Environmental Services

2206 South Main Street
 Blacksburg, VA 24060
 540-552-0444 Fax: 540-552-0291

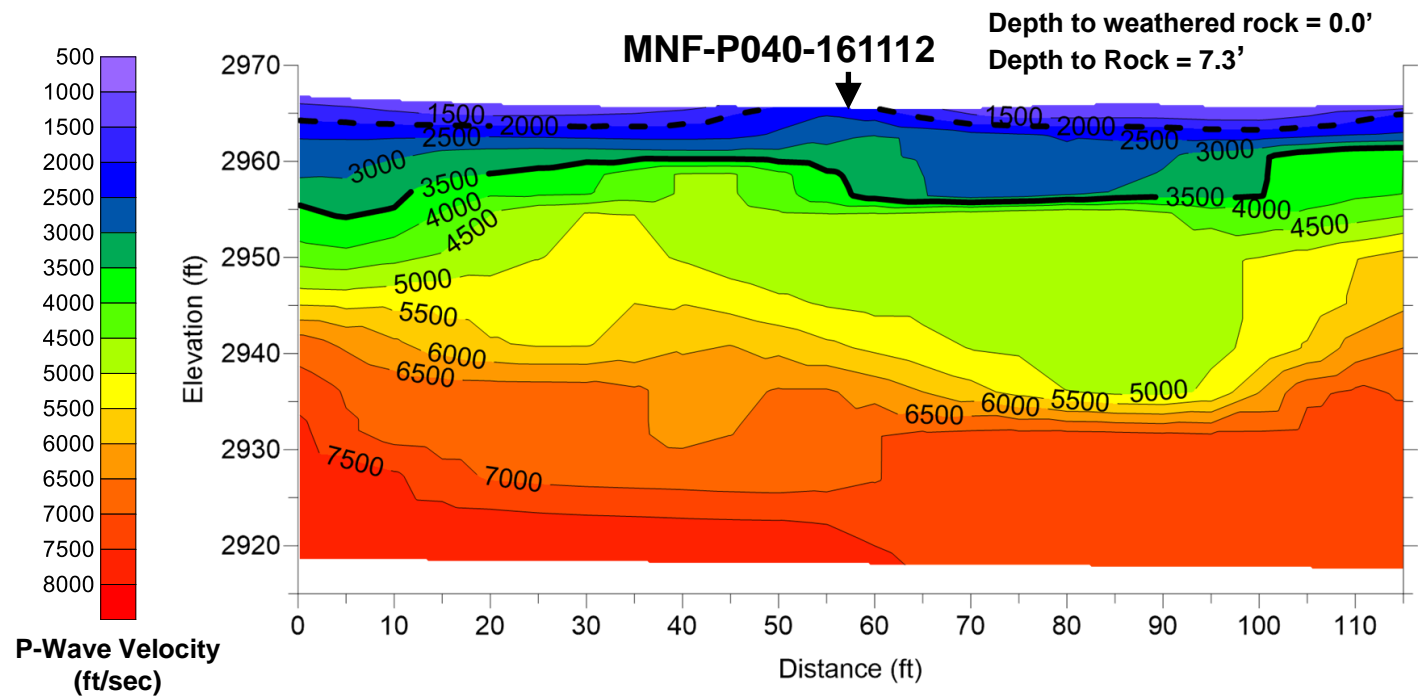
Richmond, VA
 Charlottesville, VA
 Hampton Roads, VA

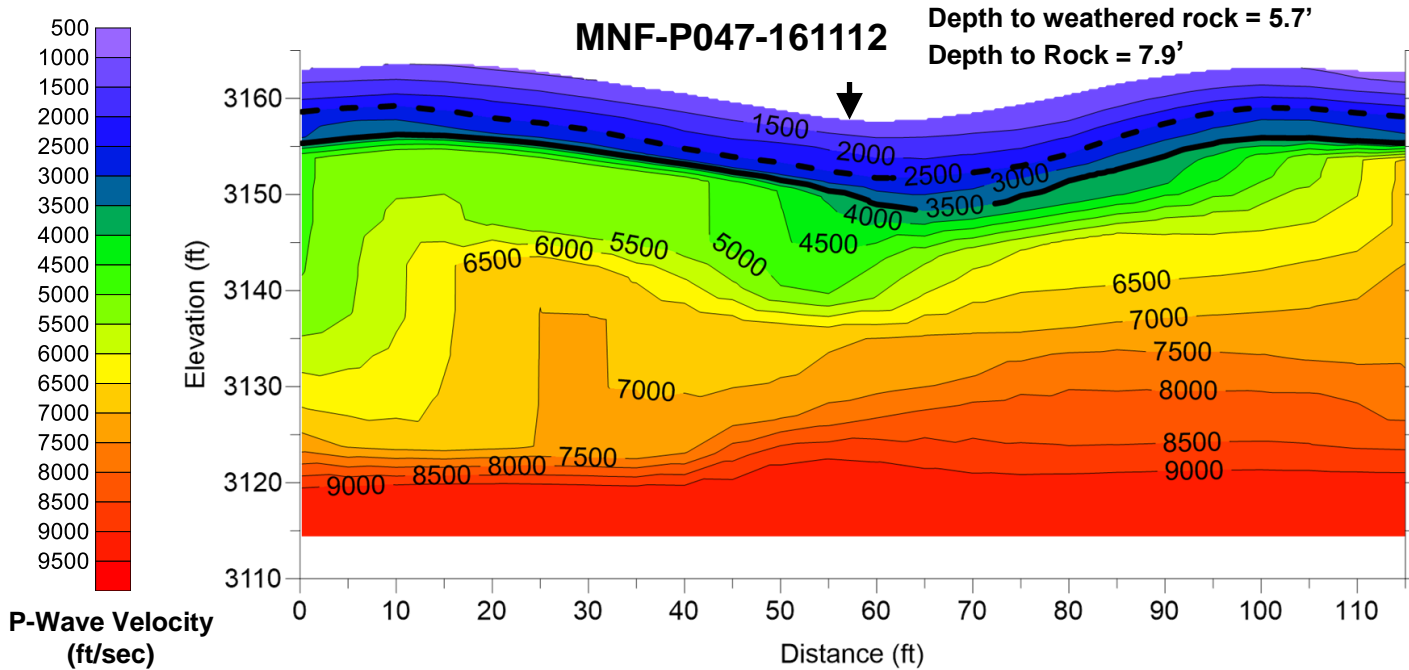
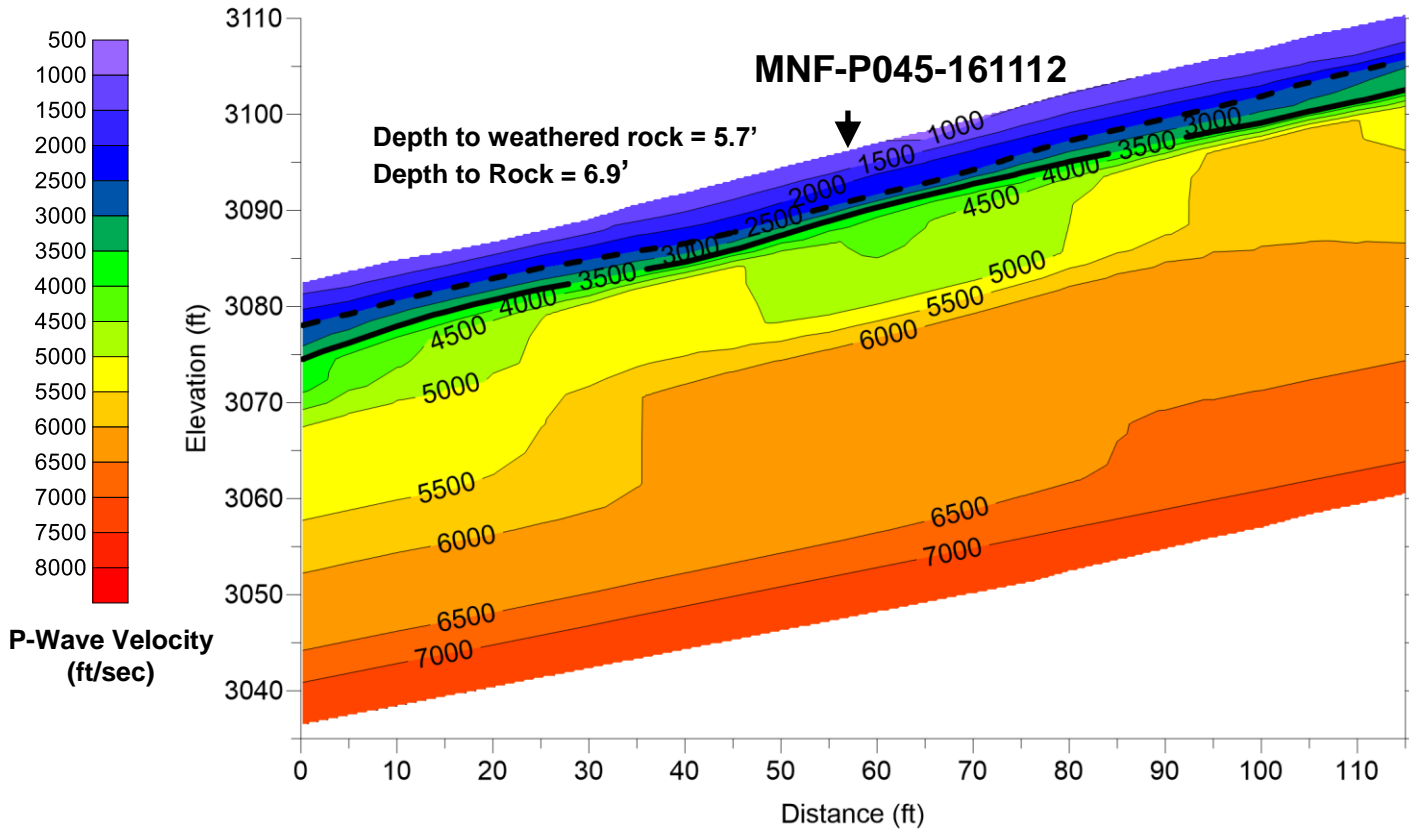
Seismic Refraction Study for the
 Atlantic Coast Pipeline
 George Washington National Forest and
 Monongahela National Forest
 DAA Project Number: 16010129-010203

FIGURE
32



-- -- = Weathered Rock
 ——— = Rock





Draper Aden Associates
 Engineering • Surveying • Environmental Services

2206 South Main Street
 Blacksburg, VA 24060
 540-552-0444 Fax: 540-552-0291

Richmond, VA
 Charlottesville, VA
 Hampton Roads, VA

Seismic Refraction Study for the
 Atlantic Coast Pipeline
 George Washington National Forest and
 Monongahela National Forest
 DAA Project Number: 16010129-010203

FIGURE
34

Seismic refraction model results for MNF-P063-161111 and MNF-R019-161112

