

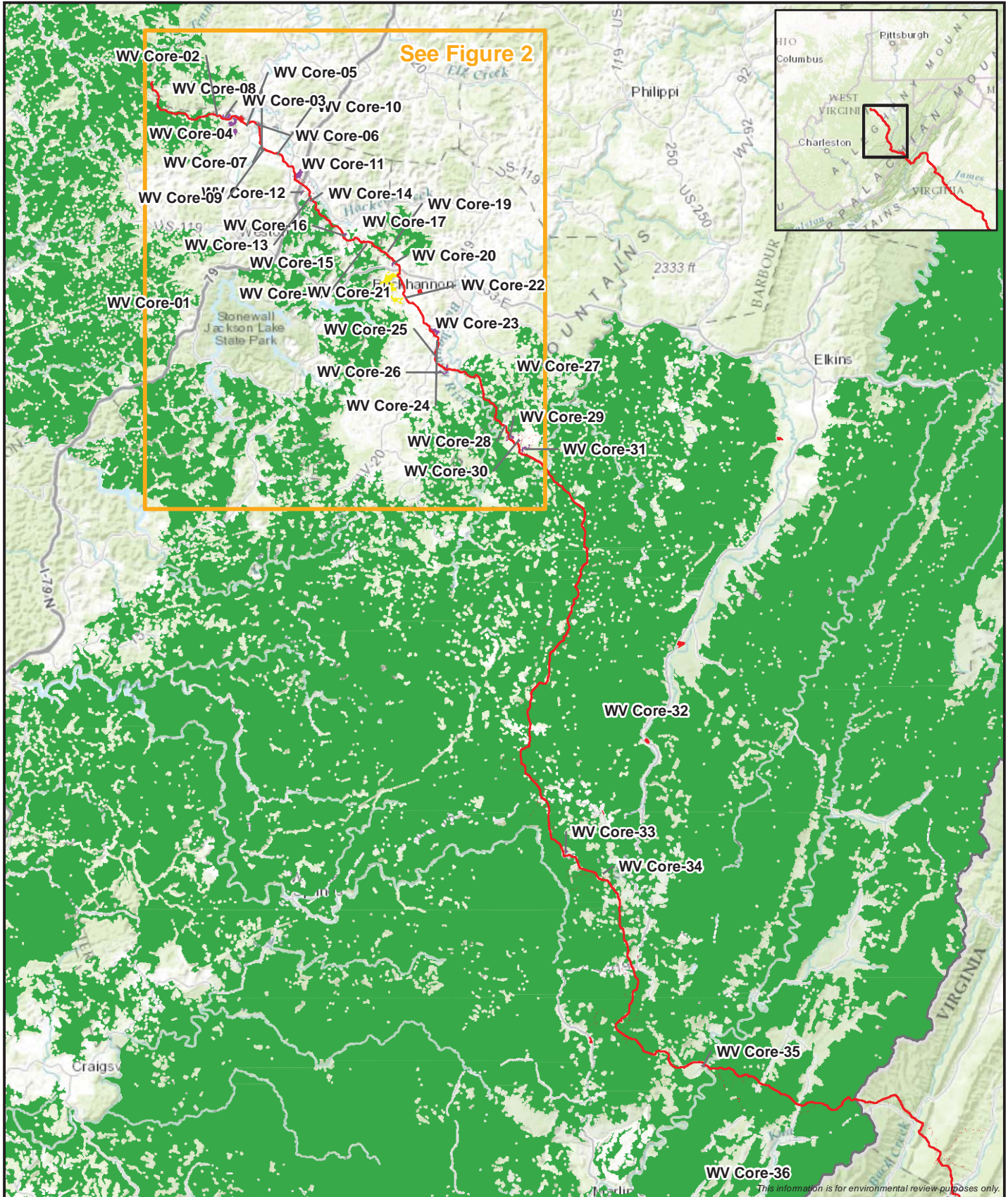
**ATLANTIC COAST PIPELINE, LLC
ATLANTIC COAST PIPELINE**

And

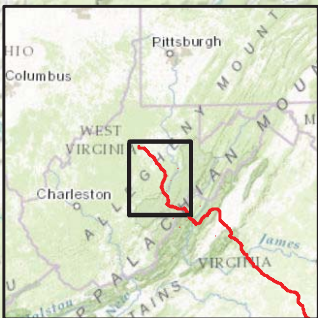
**DOMINION TRANSMISSION, INC.
SUPPLY HEADER PROJECT**

Q21 Attachment 1

Maps of Interior Forest Core Areas



See Figure 2



This information is for environmental review purposes only.

- Proposed Atlantic Coast Pipeline and Workspace
- Small Core (<250 acres) - 29
- Medium Core (250-500 acres) - 1
- Large Core (>500 acres) - 6

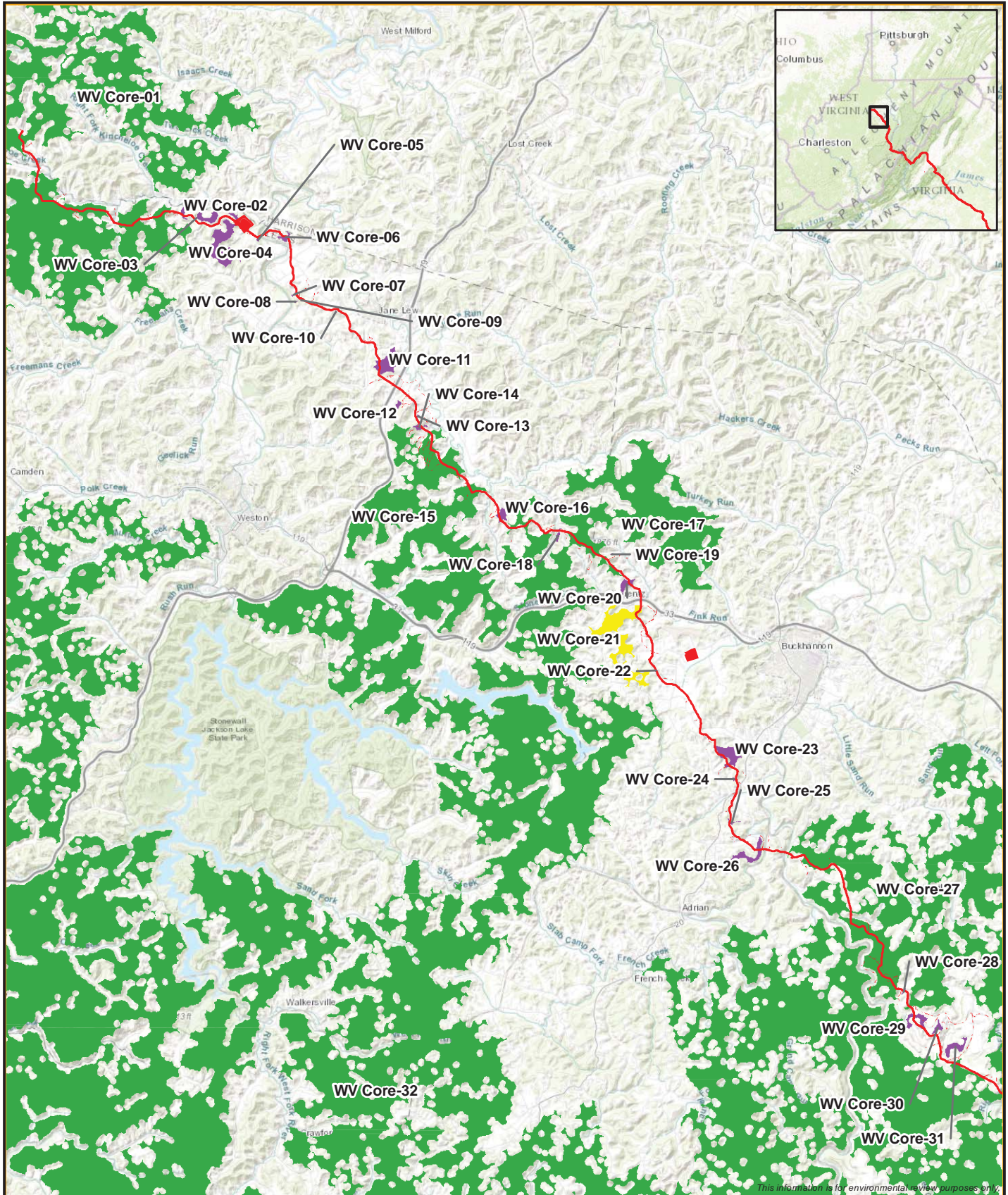
1:500,000

0 2 4 Miles

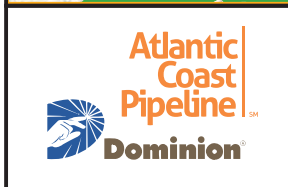
*Note - Only cores greater than 0.5 acres are shown on the map.

Figure 1
Atlantic Coast Pipeline Project
Core Forest Areas crossed by the
ACP in West Virginia





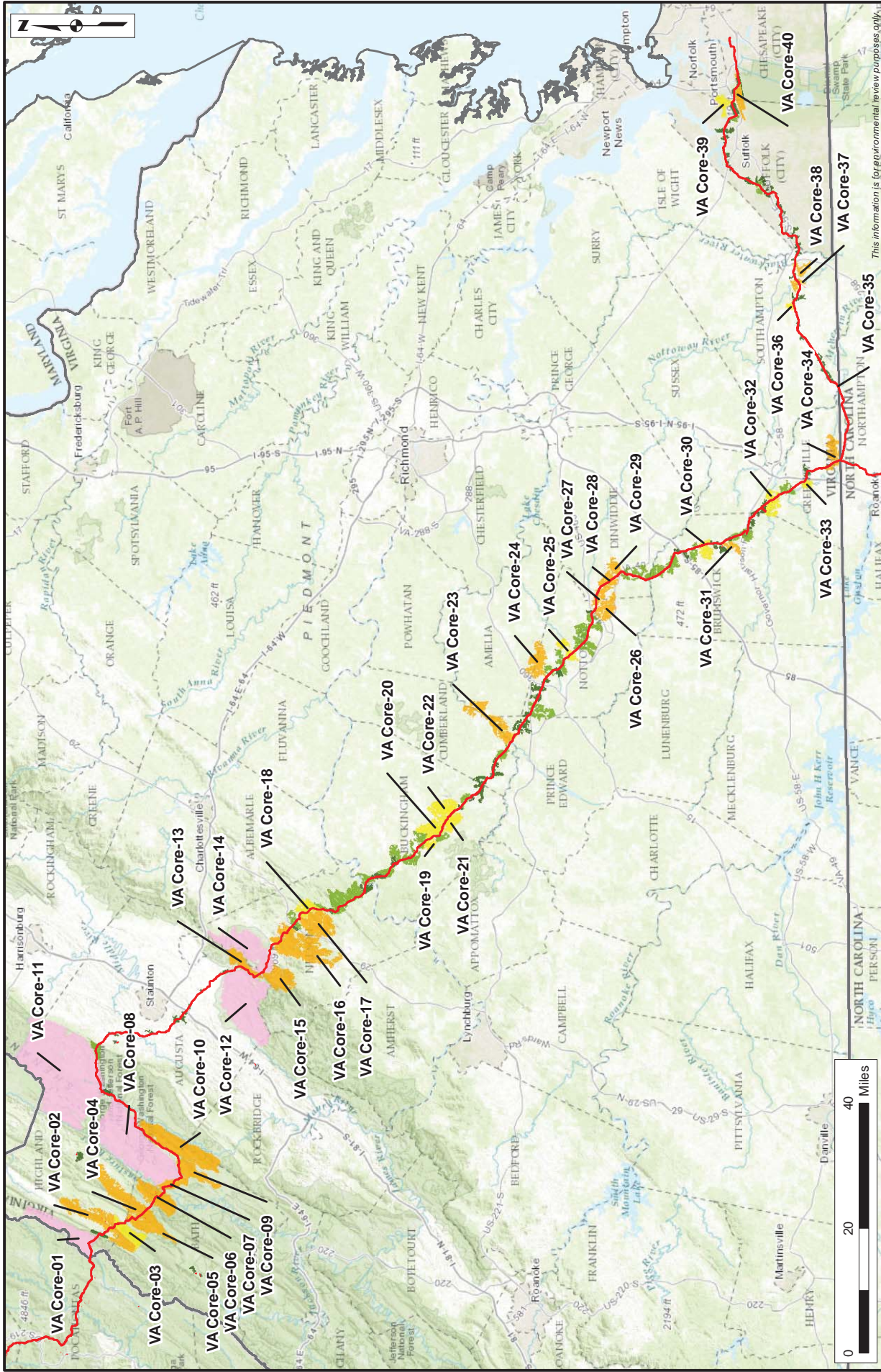
This information is for environmental review purposes only.



- Proposed Atlantic Coast Pipeline and Workspace
 - Small Core (<250 acres) - 26
 - Medium Core (250-500 acres) - 1
 - Large Core (>500 acres) - 4
- *Note - Only cores greater than 0.5 acres are shown on the map.
- 1:200,000
0 1 2 Miles

Figure 2
Atlantic Coast Pipeline Project
Core Forest Areas crossed by the
ACP in West Virginia





Ecological Core Area — Proposed Route

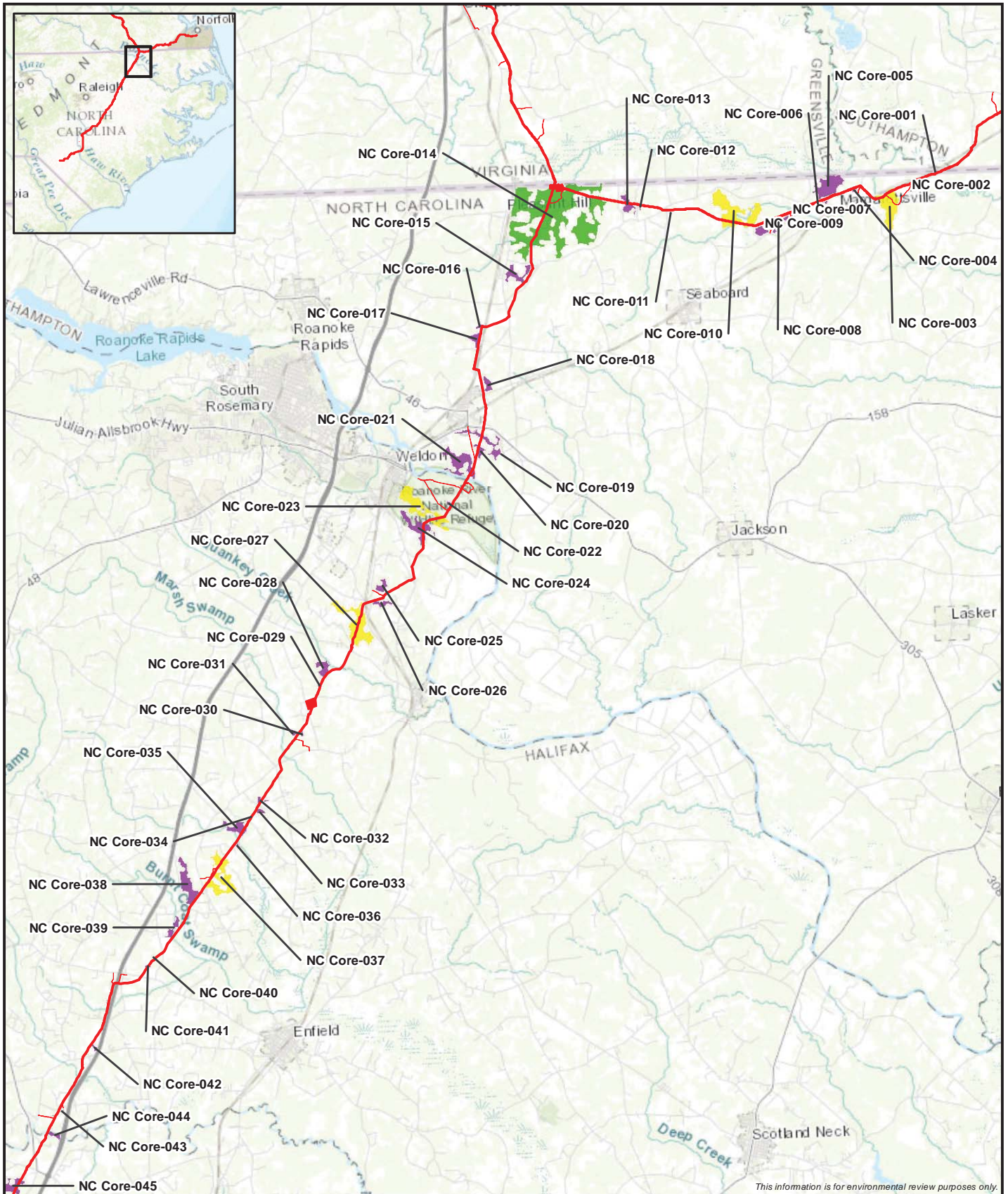
- C1: Outstanding
- C2: Very High
- C3: High
- C4: Moderate
- C5: General

Atlantic Coast Pipeline
Dominion

Figure 3
Atlantic Coast Pipeline Project
Ecological Core Areas crossed by
the ACP in Virginia

This information is for environmental review purposes only.





This information is for environmental review purposes only.



- Proposed Atlantic Coast Pipeline and Workspace
- Small Core (<250 acres)
- Medium Core (250-500 acres)
- Large Core (>500 acres)

1:253,440

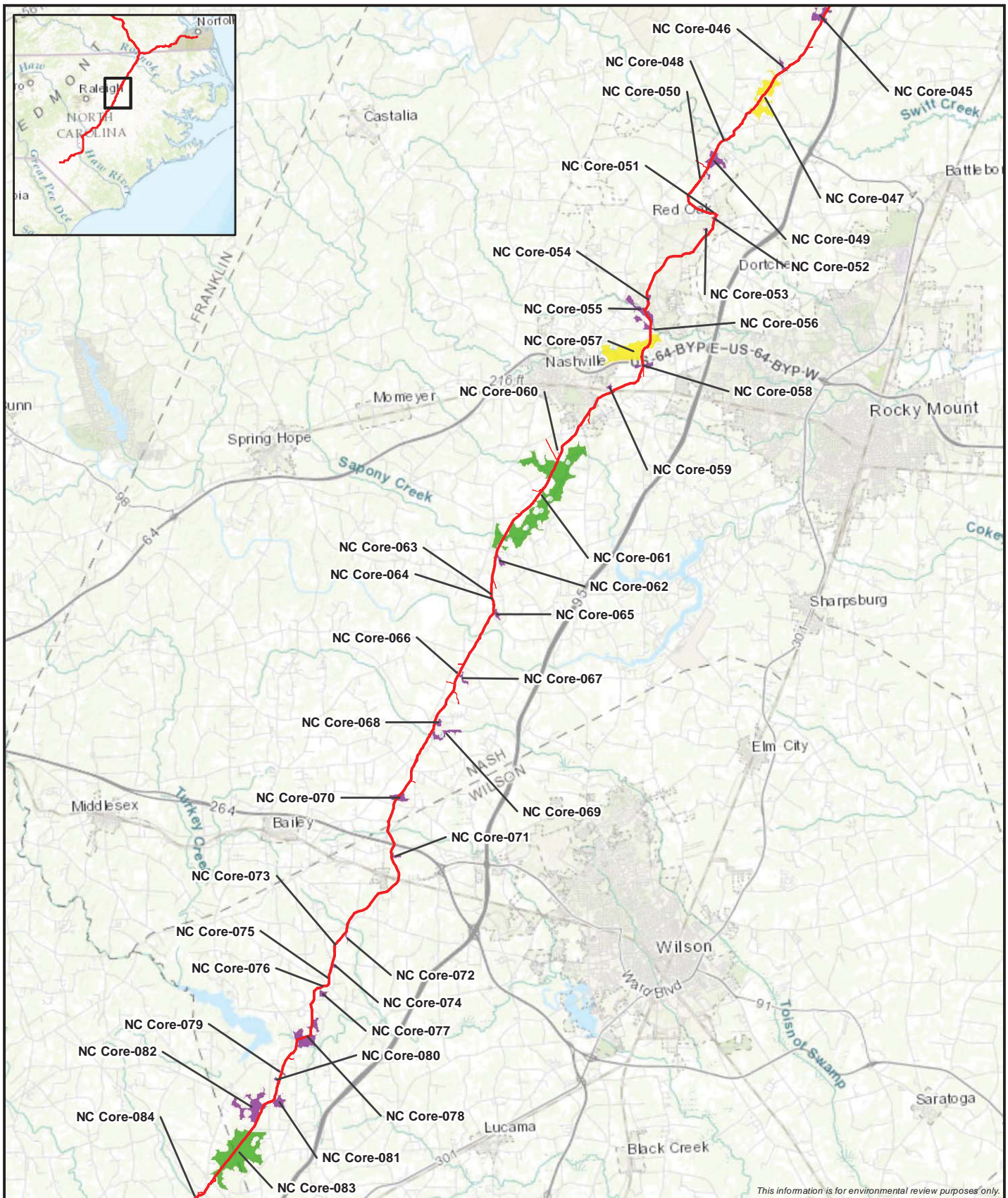
*Note - Only cores greater than 0.5 acres are shown on the map.

0 2 4 Miles



Figure 4
Atlantic Coast Pipeline Project
 Core Forest Areas crossed by the ACP in North Carolina





This information is for environmental review purposes only.



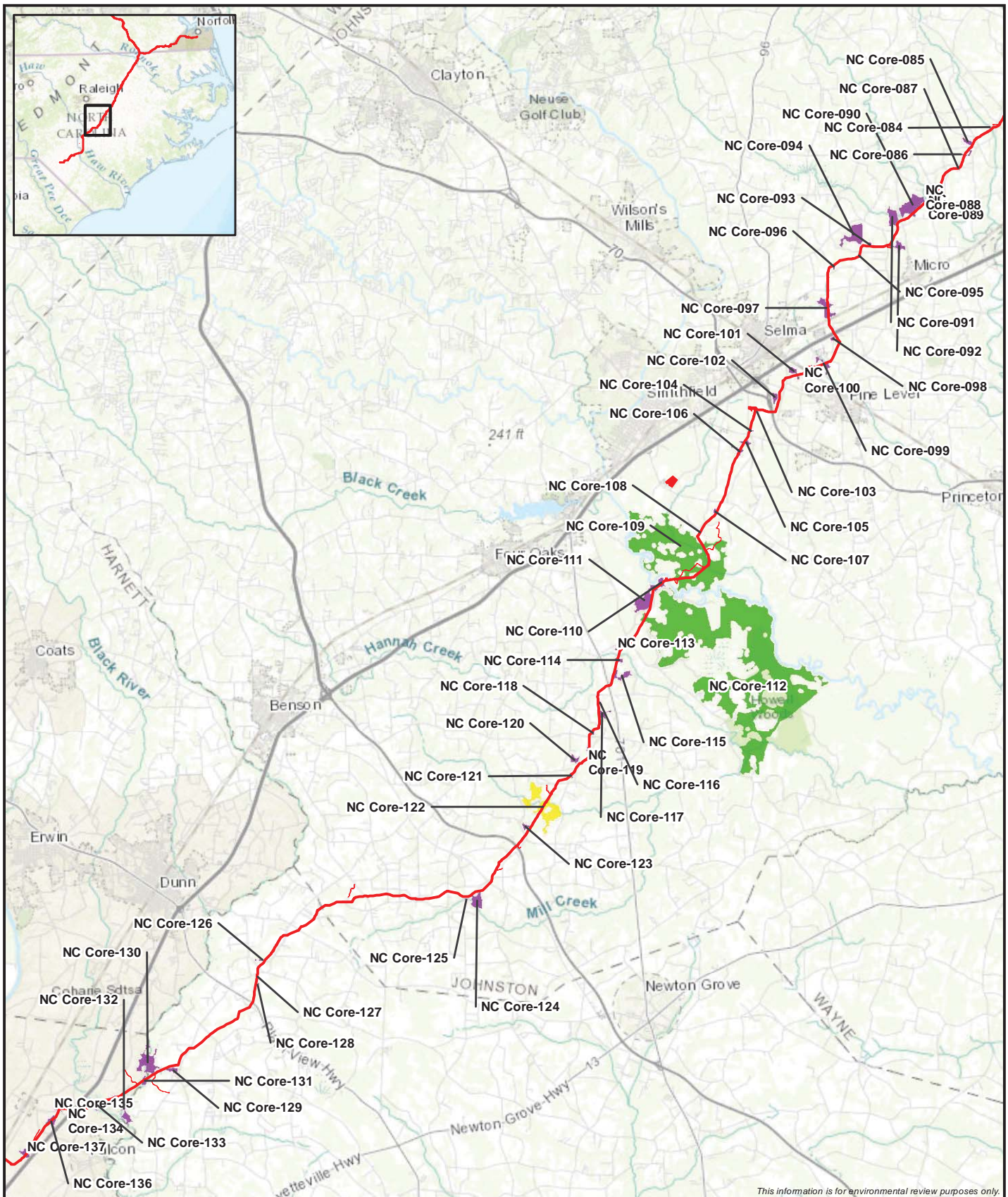
- Proposed Atlantic Coast Pipeline and Workspace
- Small Core (<250 acres)
- Medium Core (250-500 acres)
- Large Core (>500 acres)

*Note - Only cores greater than 0.5 acres are shown on the map.



Figure 5
Atlantic Coast Pipeline Project
 Core Forest Areas crossed by the ACP in North Carolina





■ Proposed Atlantic Coast Pipeline and Workspace
■ Small Core (<250 acres)
■ Medium Core (250-500 acres)
■ Large Core (>500 acres)

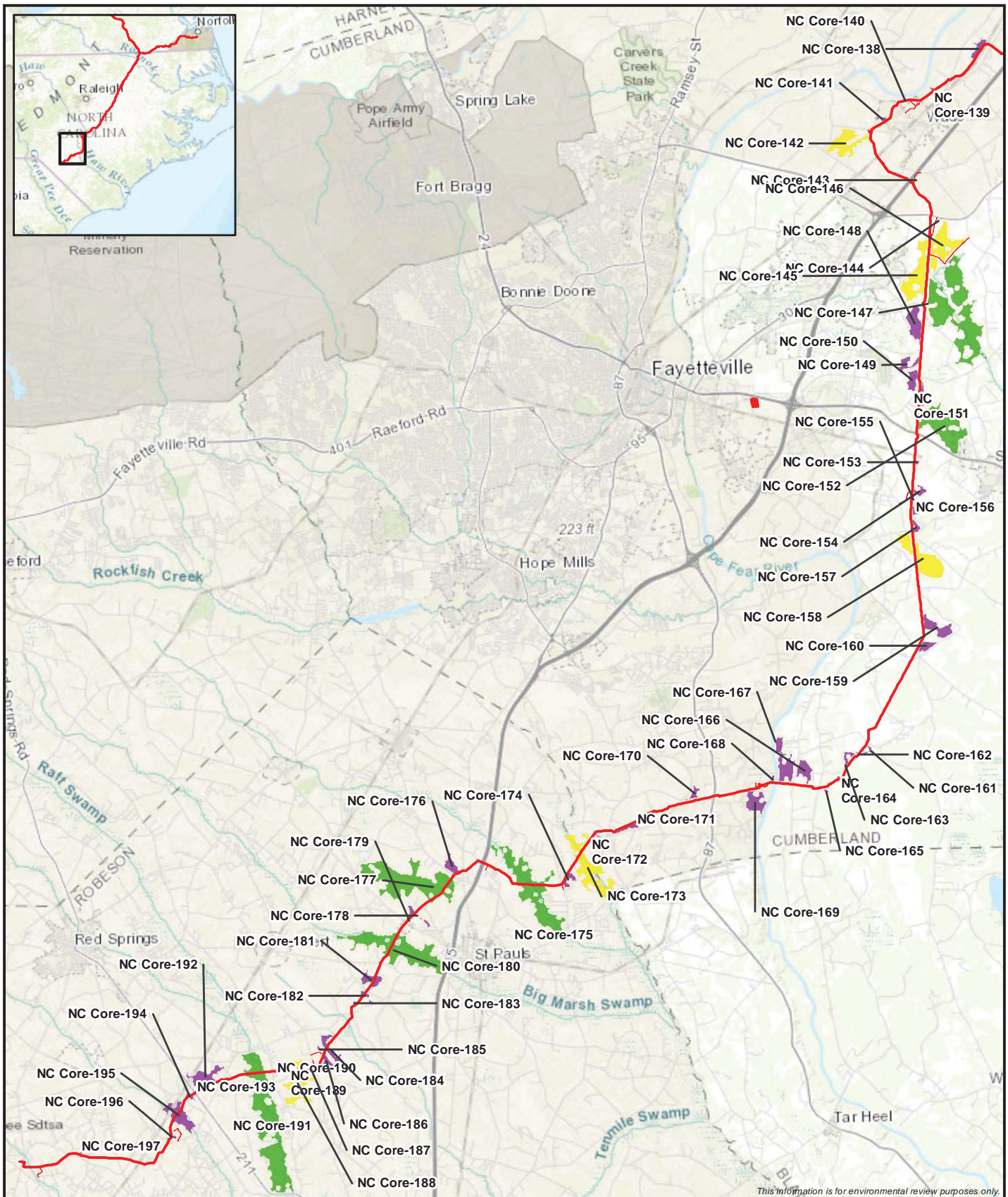
1:253,440

*Note - Only cores greater than 0.5 acres are shown on the map.

0 2 4 Miles

Figure 6
Atlantic Coast Pipeline Project
Core Forest Areas crossed by the ACP in
North Carolina

ERM



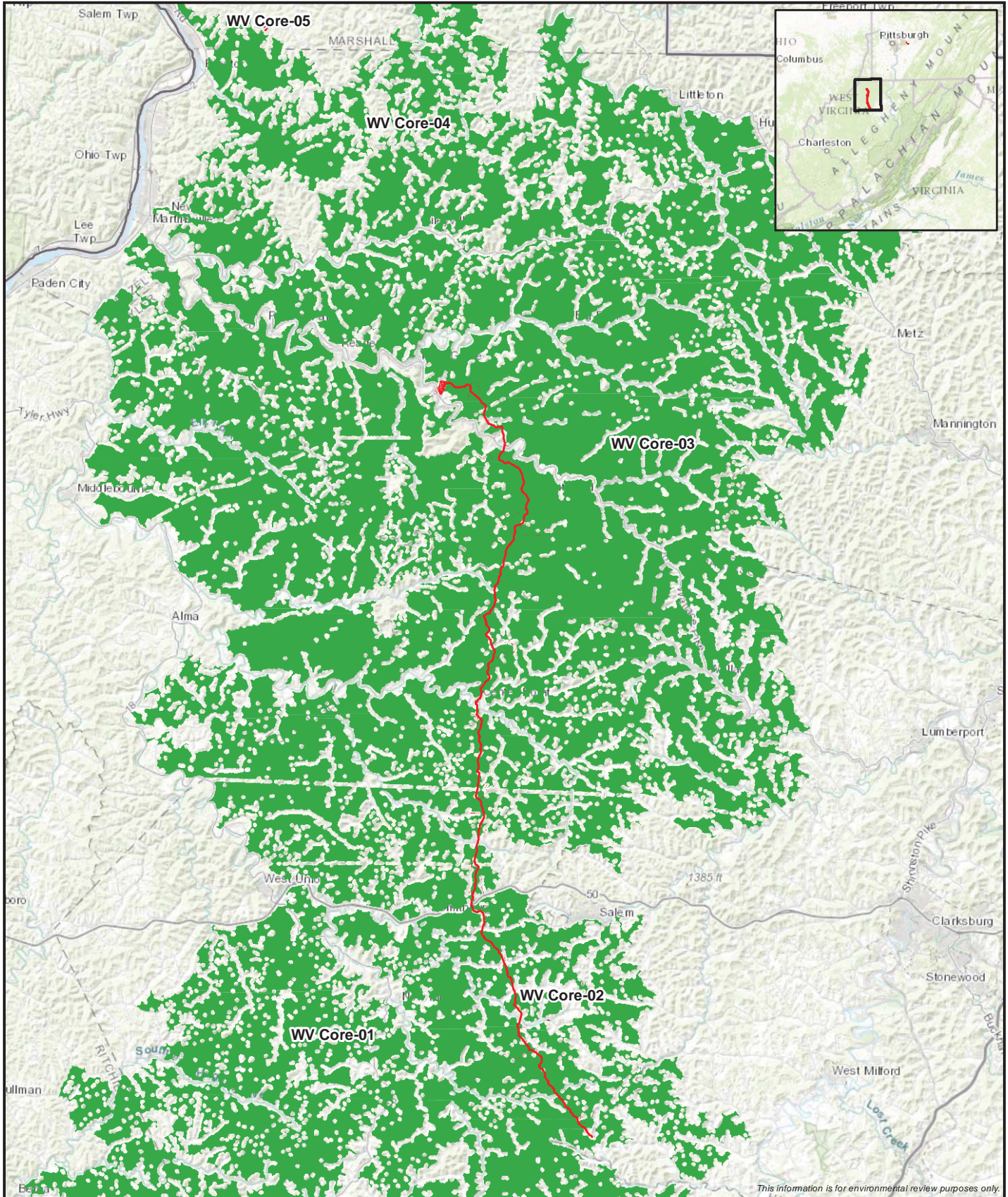
- █ Proposed Atlantic Coast Pipeline and Workspace
- █ Small Core (<250 acres)
- █ Medium Core (250-500 acres)
- █ Large Core (>500 acres)

*Note - Only cores greater than 0.5 acres are shown on the map.

1:253,440

0 2 4 Miles

Figure 7
Atlantic Coast Pipeline Project
 Core Forest Areas crossed by the ACP in North Carolina



This information is for environmental review purposes only.

	Proposed Supply Header Pipeline and Workspace	
	Small Core (<250 acres) - 1 Medium Core (250-500 acres) - None (0) Large Core (>500 acres) - 4	
*Note - Only cores greater than 0.5 acres are shown on the map.		1:300,000 0 1.5 3 Miles

Figure 8
Supply Header Pipeline Project
 Core Forest Areas crossed by the
 SHP in West Virginia

